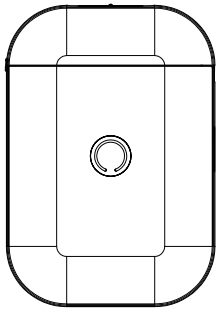


## OPERATION INSTRUCTIONS



**D11**

Ver1.0

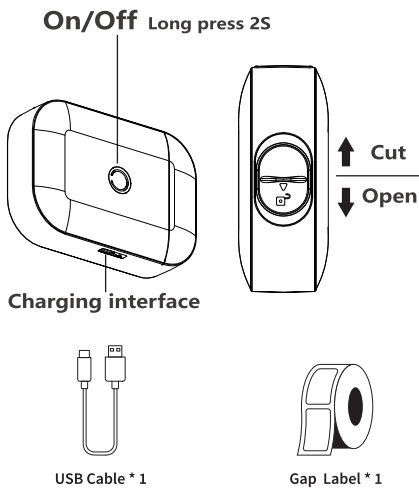
## 01 SPECIFICATIONS

Model	D11
Printing Method	Thermal
Resolution	203 dpi
Printing Life	50 km
Printing Speed	20 mm/s
Effective Printing width	12 mm
Input	DC 5V, 2A
Battery capacity	1200 mAh
Battery life	>500 circuits
Interface	Type-C
Working Temp	14°F-122°F (-10°C-50°C)

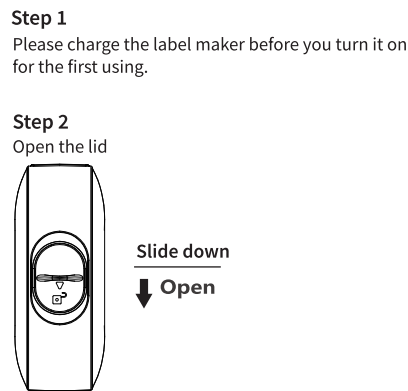
## 02 INDICATOR DESCRIPTION

Indicator	Description
Green	Power on
	Full charged
	Bluetooth disconnected
Blue	Bluetooth connected
	Normal using
	Printing
Red	Without paper
	Cover opening
	Overheating
	Charging
Red flashing	Low battery

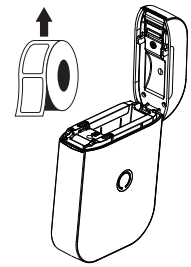
## 03 PRODUCT OVERVIEW



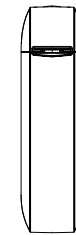
## 04 BASIC USE



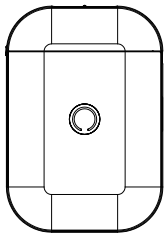
**Step 3**  
Load the paper with the stickers facing up



**Step 4**  
Please make sure to leave 0.1-0.2 inches of label paper on the outside

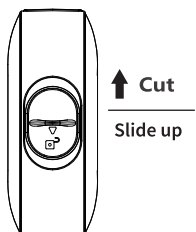


### Step 5



Press the power button about 2 seconds to start the printer.

### Step 6



Label calibration

**\*For gap label**  
Press the power button once, the label will run out and stay in the gap.

**\*For continuous label**  
Slide up to cut the label outside the slot port to start printing.

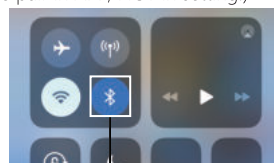
### 1 App download

Search **BEEPRT MINI** in App Store or Google Play. Or scan below QR code to download the APP.



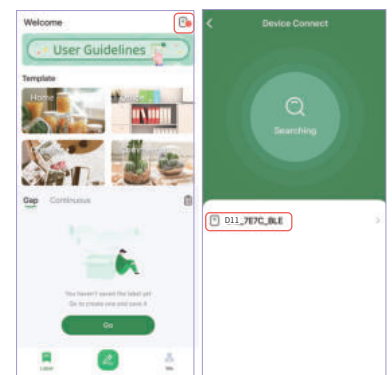
### 2 Bluetooth connection

• Turn on the device and phone Bluetooth, and then open FlashMini app. (Please pair in APP, NOT in setting.)



- Click '🔍' to search the device and choose the correct device (e.g. D11\_7E7C\_BLE).
- Click on correct device, it will successfully connect to the Bluetooth.

Note: If a PIN code is needed, please enter 0000.



- The color of power indicator will become to blue from green after pairing done.



### 3 Label loading

- Make the label sticker face up and insert it into the inside feed slot, leaving 0.1-0.2 inch of label outside the slot port.
- If the label is placed reversely, it will print blank paper.
- No label paper left outside will cause abnormal paper feeding. The device will not respond or respond without paper feeding.

### 4 Printing steps

- **Select the right label type/label size before editing.** If select wrong label paper, the printer can't print all the words.
- Click on the recognized template and go into the editing page.
- Click on 'Text' at the lower part of the page, the 'Double click' pops up, then edit labels in the entry bar. Click 'T' to adjust the font size. Click 'OK' to finish the editing. Then you can adjust the position of the text box.(If you want to edit the text again, Double click the text box again)
- Click the 'Print' option and set number of copies, then click 'OK'.
- Cut the label (Slide up).

### Question: Why does blank paper come out after printing and the device keeps making a cracking sound?

Answer:  
(1) No label left outside when loading the label paper will lead to failed paper feeding. Please make sure 0.1-0.2 inch of label paper left outside.  
(2) The paper has been used up, please replace.

### Question: How can I solve the offset problem in printing?

Answer:  
(1) D11 label maker is only suitable for the Jagens label range. Other Brand label paper will not work and cause unsatisfied printing results.  
(2) The device can not detect the label paper and the detector is malfunctioning.  
(3) Paper Jam. Please check if there is any residue or glue sticking in the paper bin or at the print head; if the edge of the label paper is rolled up.

### Question: Will the machine be automatically shut down?

Answer: To save power and protect the battery, the printer will automatically shut down after disconnecting Bluetooth or after 15 minutes of non-use of the app.

## 07 WARRANTY

1. From the date of purchase, the print head of this product shall be guaranteed for 3 months or the print distance shall not exceed 30 kms(whichever comes first), and the rest parts shall be guaranteed for 12 months.

2. Warranty services are not available during the warranty period if:  
(1) You disassemble, repair or modify the printer without authorization.  
(2) The damage is caused by man-made or other force majeure.  
(3) The damage os caused by accidents, misuse, or use of other companies' consumables.

## 08 FCC Compliance

This device complies with part 15 of the FCC Rules. Operation is subject to the following two conditions:  
I. This device may not cause harmful interference, and  
II. this device must accept any interference that may cause undesired operation.

## 05 Trouble shooting

### Question: Why cannot the device be searched by the app?

Answer:  
(1) Bluetooth responses slowly. Please re-open the app and reboot the device and try to connect again.  
(2) Please update or re-install the app and try. Or please contact the customer service.

### Question: Why does the device work normally but keep printing blank paper?

Answer: It may be because the label paper is laid reversely, please reserve the label sticker.

### Question: Why does the machine keep feeding paper?

Answer:  
(1) It may be because there is label or residues sticking on the detectors on the cover or in the paper bin.  
(2) It may be because there is label or residues sticking on the print head. The label paper failed to be detected.  
(3) D11 label maker is only suitable for PikDik label range. Other Brand label paper will not work and cause unsatisfied printing results.  
(4) The detectors are malfunctioning, please contact the seller.

### Question: Why is the Bluetooth suddenly disconnected and fail to be connected for many times?

Answer: It may be because the Bluetooth system crashes. Please reboot the phone and the Bluetooth.

### Question: Why does the printout look gray or in a light color?

Answer:  
(1) The actual number of label printed exceeds the number which is preset.  
(2) The label used is not PikDik label range.  
(3) The maker is malfunctioning.

## 06 WARNINGS

1. Make sure that the paper bin is clean before using. If the print head is clogged, it may be damaged during printing. Please use alcohol to clean the paper bin and print head.

2. Turn off the power immediately when it malfunctions.

3. There are complex circuits and devices inside the printer, please do not disassemble the printer without authorization.

## 09 CONSUMABLE

You can get support or buy the consumable from the website [www.PikDik.com](http://www.PikDik.com) or scan below QR code:



## 10 SUPPORT

E-mail: [support@pikdik.com](mailto:support@pikdik.com)

Live chat:

Scan the below QR code to talk with us at 10am to 10pm EST.



Using the WhatsApp camera to scan

### Question: What is the reason for the sudden stopping of printing?

Answer: In order to ensure the safety of the label maker, multiple protection modes have been programmed. In the event of 'lack of paper', 'cover open', 'overheat temp' and other issues, the printer will stop printing. Please analyse the problem according to the actual situation.

### Question: How can I center the label content when editing?

Answer: When edit text, click 'T', there are options to align center, left, or right-click to adjust the text position in the text box. In the 'Align' section, the position of the text box on the label paper can be adjusted. At the same time, the text box can be moved with fingers.

### Question: Does the label maker support batch printing? How many numbers of labels can be printed in one batch at most?

Answer: The D11 supports batch printing. The app currently supports up to 999 labels in a single batch. But taking into account the actual number of label paper of different sizes, the printer can print up to 200 label stickers in a batch.

4. Charge the battery in a cool and airy room. Do not expose the printer and power adapter to high-temperature and high-humidity environments, or water to avoid short circuits that can cause the battery to heat up, smoke, deform, damage, or even explode. If the power adapter comes into contact with water or other liquid, cut off the power immediately. When you notice smoke or an odor from your printer or power adapter, unplug the power adapter immediately and take care to avoid burns.

5. Do not squeeze or shake the printer and power adapter. Do not remove or modify the power adapter. It is prohibited to use the power adapter when the power cord is damaged.

6. When unplugging the printer, grab the power adapter. Pulling the power cable will damage the cable.

7. Do not use the printer near flammable products such as gas station and fuel warehouses.

8. Do not use the printer when it is charging or on low battery.

**FCC Warning Statement: Changes or modifications to this unit not expressly approved by the party responsible for compliance could void the user's authority to operate the equipment. This equipment has been tested and found to comply with the limits for a Class B digital device, pursuant to Part 15 of the FCC Rules. These limits are designed to provide reasonable protection against harmful interference in a residential installation. This equipment generates, uses and can radiate radio frequency energy and, if not installed and used in accordance with the instructions, may cause harmful interference to radio communications.**

**However, there is no guarantee that interference will not occur in a particular installation. If this equipment does cause harmful interference to radio or television reception, which can be determined by turning the equipment off and on, the user is encouraged to try to correct the interference by one or more of the following measures:**

- **Reorient or relocate the receiving antenna.**
- **Increase the separation between the equipment and receiver.**
- **Connect the equipment into an outlet on a circuit different from that to which the receiver is connected.**
- **Consult the dealer or an experienced radio/TV technician for help.**

**This device complies with Part 15 of the FCC Rules. Operation is subject to the following two conditions: (1) this device may not cause harmful interference, and (2) this device must accept any interference received, including interference that may cause undesired operation.**

#### **FCC Radiation Exposure Statement**

**The device has been evaluated to meet general RF exposure requirement. The device can be used in portable exposure condition without restriction.**