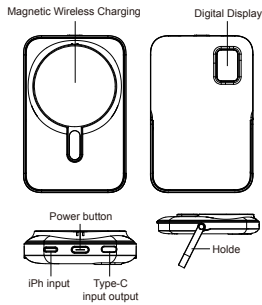


# 10,000mAh MAGNETIC WIRELESS POWERBANK Instruction Manual M2116Q



## What's included:

- 1x 10,000mAh Wireless Power Bank
- 1x Instruction Manual

## Tech Specifications:

- Capacity: 10000mAh
- Lightning input: 5V 2A
- Type-C input: 5V 2.6A/9V 2A/12V 1.5A 18Wmax
- Wireless output: 15W/10W/7.5W/5W
- Type-C output: 5V 2.4 A/9V 2.2A/12V 1.67A 20Wmax

## LED Screen:

- Press the Powerbank ON/OFF button(1) once to light up the view the voltage remaining power capacity.

## INSTRUCTIONS:

### 1. Charging the PowerBank:

- Charge the powerbank fully before usage.

- Connect the provided charging cable to a power source and to the Type-C Input on the powerbank.
- Once fully charged, the power capacity will show 100% power capacity.

### 2. Charging Electronic Devices with the Power Bank

- Connect the appropriate cable to your mobile phone/device.
- Connect the Type-C tip or USB-A tip of a cable to Type-C Output or USB-A Output.
- Remove the charging cable from your mobile device when fully charged.

### 3. Charging Electronic Devices with the Wireless Charging:

- Press Powerbank button the LED screen will show the remaining power capacity, and the wireless charging symbol will flash once the power bank is in wireless charging standby mode.
- Place wireless charging enable device on Wireless Charging Pad. The device will begin to charge, the wireless charging symbol will show on the LED screen when charging.
- Remove your mobile device and powerbank once fully charged.

*\*\* Note: If the wireless charging symbol flashes on the screen, an unknown object is being detected between the wireless charging pad and the phone by FOD(Foreign Object Detection).*

*The powerbank will not begin to charge until object is removed.*

## SAFETY PRECAUTIONS:

- WARNING**-When using this product, basic precautions should always be followed:
  - Read all the instructions before use.
  - Never store or use this product in temperatures below 32°F (0°C) or above 115°F (45°C).

- Do not overcharge your phone. The unit may become hot under excessive use. Remove your phone once it is fully charged. Never charge your phone for more than 7 hours at a time.
- The unit will only achieve full performance after 2 or 3 completed charge and discharge cycles.
- To reduce the risk of injury, close supervision is required when the product is used near children.
- Do not expose the device to moisture.
- Do not use the device in excess of its output rating. Overload outputs above the rating may result in a risk of fire or injury.
- Do not use the device if damaged or modified.
- Damaged or modified batteries may exhibit unpredictable behaviour resulting in fire, explosion or risk of injury.
- Do not disassemble the device. For repairs, seek a qualified service professional. Incorrect reassembly may result in a risk of fire or injury.
- Do not expose the device to fire or excessive temperatures. Exposure to fire or temperatures above 104°F (40°C) may result in explosion.
- To ensure product safety, ensure that qualified service professionals use only identical replacement parts.
- Attachments on the back of your phone can impede the effectiveness of the wireless charger, and lead to overheating. Please remove attachments from the phone before charging on this device.
- The strong magnetic fields of neodymium magnets can damage items such as television, computer monitors, credit cards, bank cards, computers, diskettes and other data carriers, video tapes, mechanical watches, hearing aids, loud speakers and VCRs. Pace-makers may be damaged or switch to "Test Mode" in the presence of a strong magnetic force, if a pace-maker or other electrical body implant is in use, keep a minimum of 3 feet distance.

## FCC Statement:

This device complies with Part 15 of the FCC Rules. Operation is subject to the following two conditions:

- (1) This device may not cause harmful interference.
- (2) This device must accept any interference received, including interference that may cause undesired operation.

\* Warning:  
Changes or modifications not expressly approved by the party responsible for compliance could void the user's authority to operate the equipment.

The strong magnetic fields of neodymium magnets can damage items such as television, computer monitors, credit cards, bank cards, computers, diskettes and other data carriers, video tapes, mechanical watches, hearing aids, loudspeakers, and VCRs. Pacemakers may be damaged or switched to "test mode" in the presence of a strong magnetic force, if pacemaker or other electronic body implant is in use, keep a minimum of 3 feet distance.

This equipment has been tested and found to comply with the limits for a Class B digital device, pursuant to Part 15 of the FCC Rules. These limits are designed to provide reasonable protection against harmful interference in a residential installation. This equipment generates uses and can radiate radio frequency energy and, if not installed and used in accordance with the instructions, may cause harmful interference to radiocommunications. However, there is no guarantee that interference will not occur in a particular installation. If this equipment does cause harmful interference to radio or television reception, which can be determined by turning the equipment off and on, the user is encouraged to try to correct the interference by one or more of the following measures:

- Reorient or relocate the receiving antenna.
- Increase the separation between the equipment and receiver.
- Connect the equipment into an outlet on a circuit different from that to which the receiver is connected.
- Consult the dealer or an experienced radio/TV technician for help.

## FCC Radiation Exposure Statement

The device has been evaluated to meet general RF exposure requirement. The device can be used in portable exposure condition without restriction..