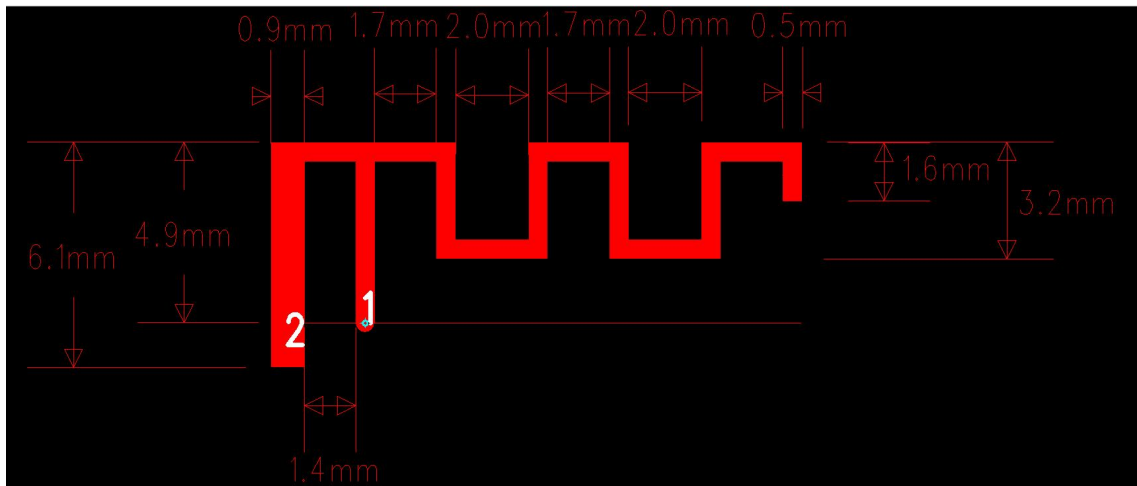


# Inverted F Antenna Specification

## Summary

| ITEM                 | ANT SPEC                                   |          |          |          |          |          |
|----------------------|--|----------|----------|----------|----------|----------|
| Model Name           | 2.4G ANT                                   |          |          |          |          |          |
| Center Frequency     | Horizontal                                 |          |          | Vertical |          |          |
|                      | 2400MHz                                    | 2450MHz  | 2500MHz  | 2400MHz  | 2450MHz  | 2500MHz  |
|                      | -1.26dBi                                   | -0.76dBi | -0.58dBi | -5.25dBi | -2.46dBi | -1.86dBi |
| MAX. Gain            | -0.58dBi                                   |          |          |          |          |          |
| Polarization         | Horizontal and Vertical                    |          |          |          |          |          |
| Azimuth Beam Pattern | Omni-directional                           |          |          |          |          |          |
| Impedance            | 50 Ohm                                     |          |          |          |          |          |
| Antenna Length       | 38.20mm                                    |          |          |          |          |          |
| Manufacture          | ZHUHAI JIELI TECHNOLOGY CO.,LTD            |          |          |          |          |          |
|                      | 333 Kexing Road, Nanping Town, Zhuhai City |          |          |          |          |          |
| Antenna Type         | PCB  |          |          |          |          |          |

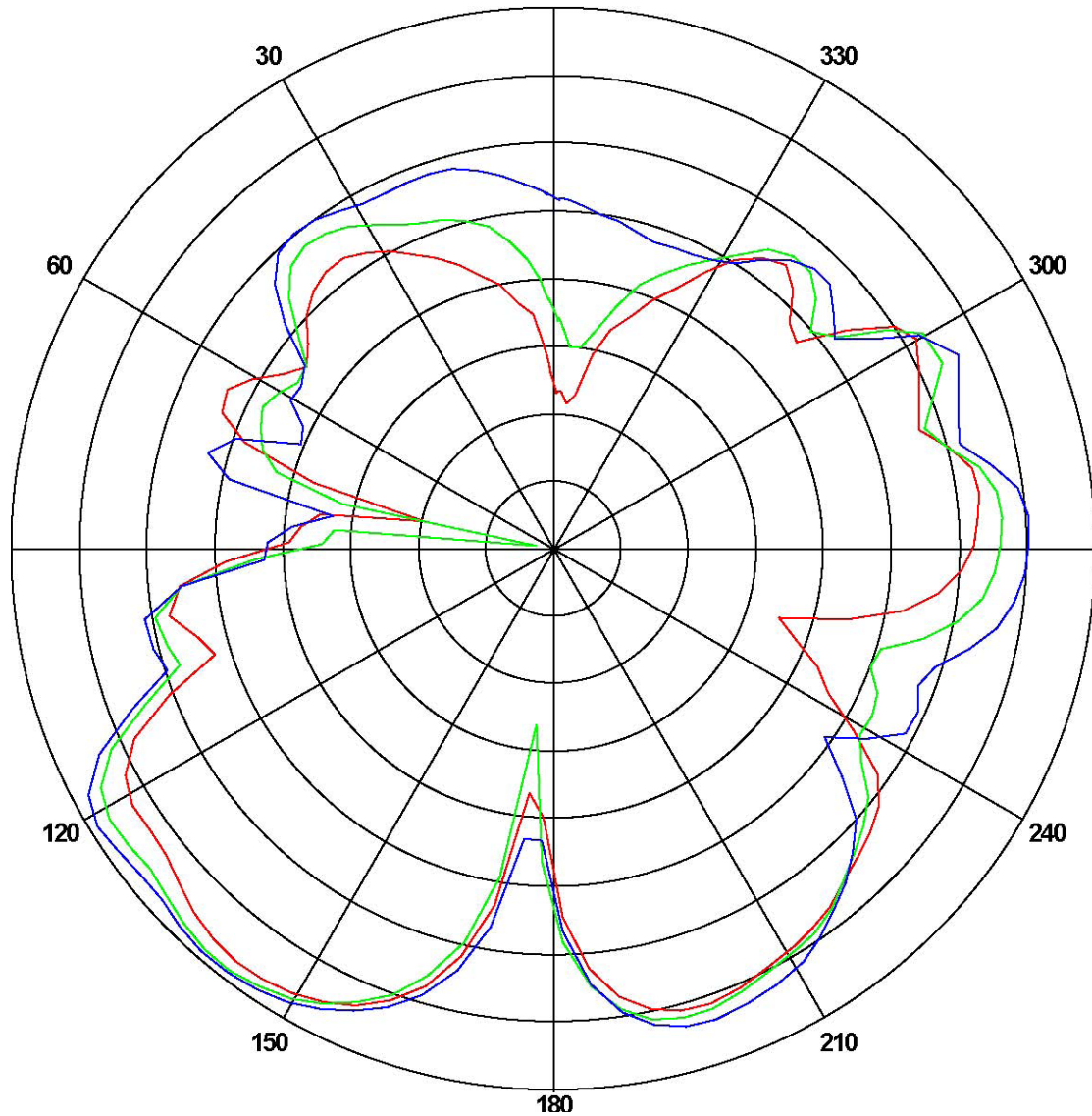
## Antenna Photo & Length (mm)



Horizontal: 2400 MHz 2450 MHz 2500 MHz

Power (dBm)

Max: 0 Min: -40 Scale: 5/div

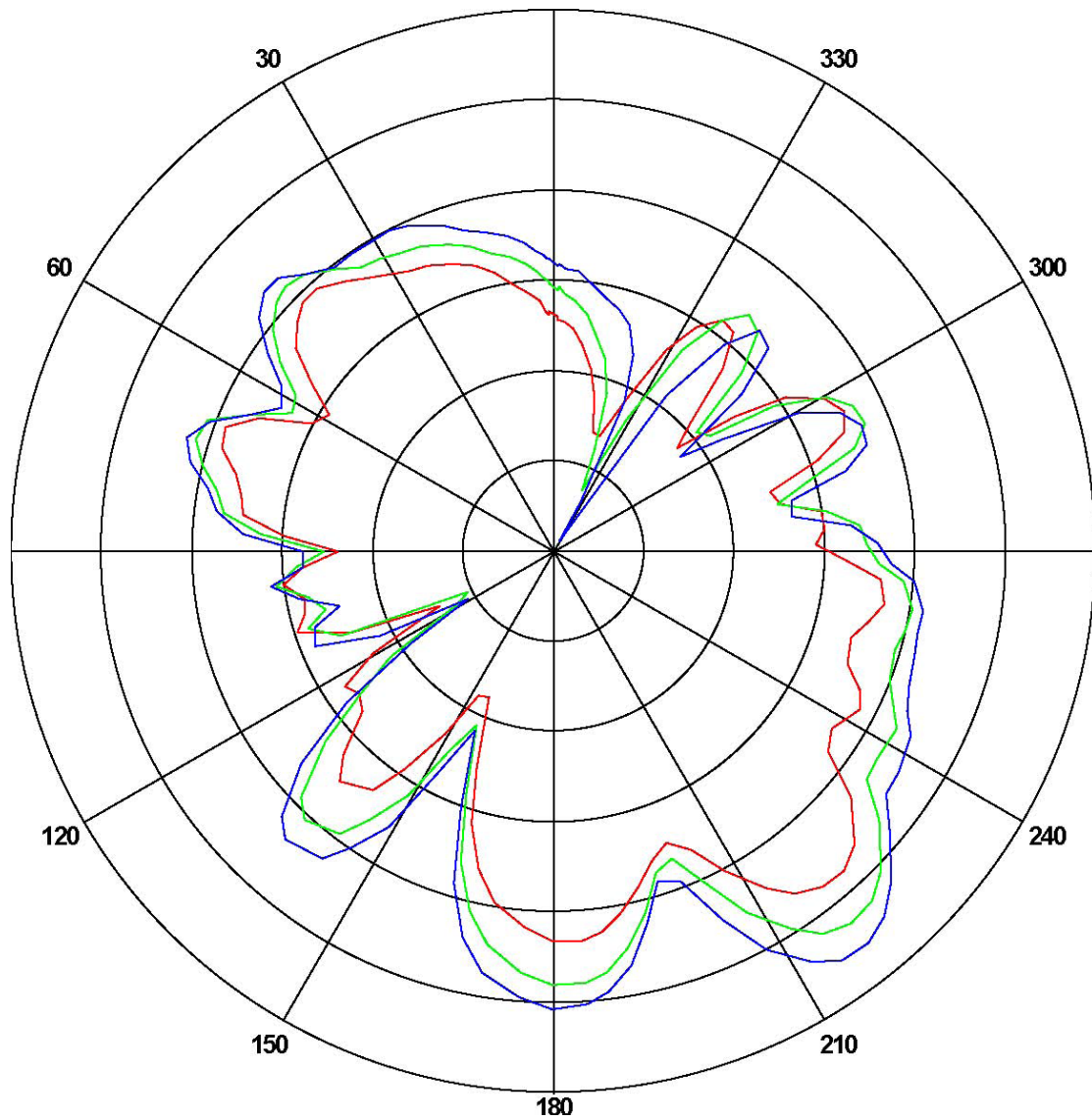


| Frequency<br>(MHz) | Gain(dBi) |          |          |
|--------------------|-----------|----------|----------|
|                    | Max       | Min      | Avg      |
| 2400               | -1.26174  | -30.0801 | -7.18716 |
| 2450               | -0.765802 | -36.5604 | -7.48023 |
| 2500               | -0.585582 | -22.0315 | -6.59127 |

Vertical: 2400 MHz 2450 MHz 2500 MHz

Power (dBm)

Max: 0 Min: -30 Scale: 5/div



| Frequency (MHz) | Gain(dBi) |          |          |
|-----------------|-----------|----------|----------|
|                 | Max       | Min      | Avg      |
| 2400            | -5.2537   | -22.1424 | -12.4294 |
| 2450            | -2.4652   | -24.5837 | -10.4702 |
| 2500            | -1.86120  | -29.5214 | -9.20432 |

ANT Test Labs: Attestation of Global Compliance Co., Ltd.