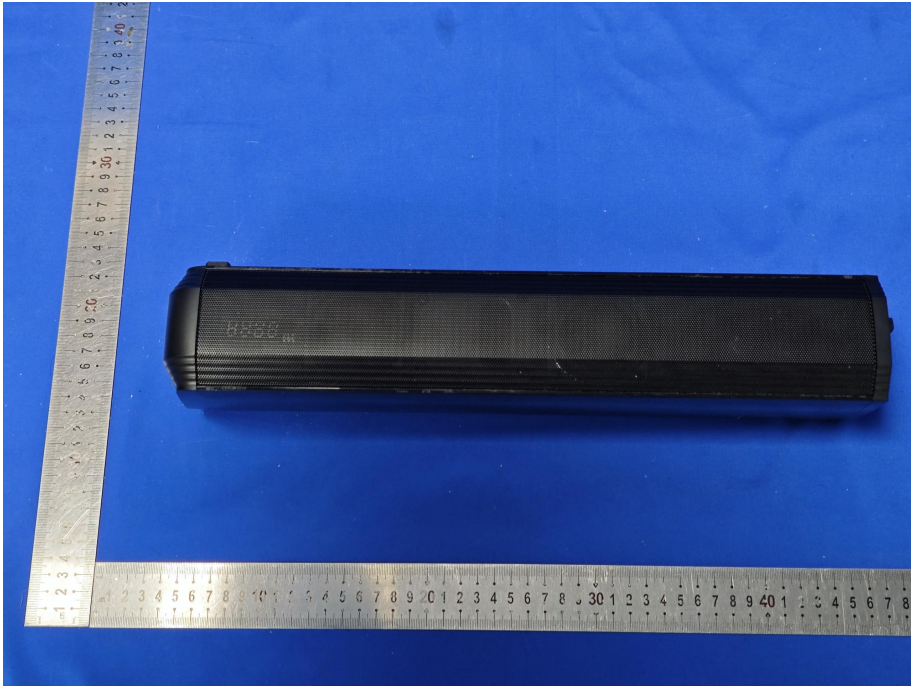
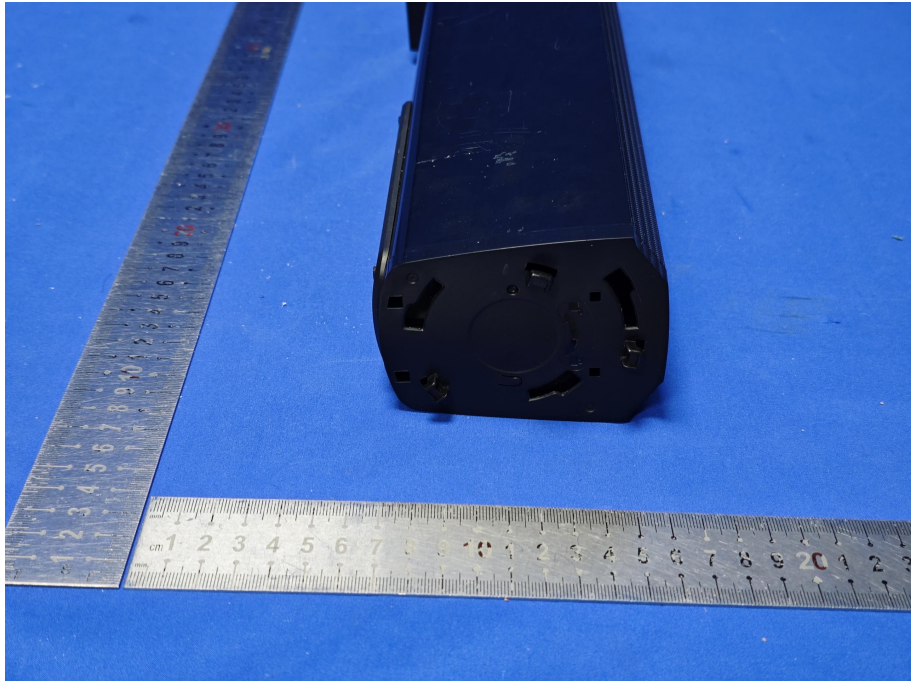


External photos











SWITCHING POWER ADAPTER
MODEL NO.: FX48U-2402500
INPUT: 100-240V ~ 50/60Hz 1.0A
OUTPUT: 24V = 2.5A



CONFORMING TO UL STD. 60950-1
CE MARKED TO CMA STD. GB 4943.1
No. 82388-1

MADE IN CHINA
Shenzhen Fengpin Technology Co., LTD