

SPECIFICATION FOR APPROVAL

File No. 2021111901

Revision 1.0

北科视频

CUSTOMER: _____

2300-W1011D-01

CUSTOMER NO: _____

2.4GHz Antenna L=100MM

PART NAME: _____

SL186P.300046.P01

SUPPLIER NO: _____

Date:

Q'TY:

PCS

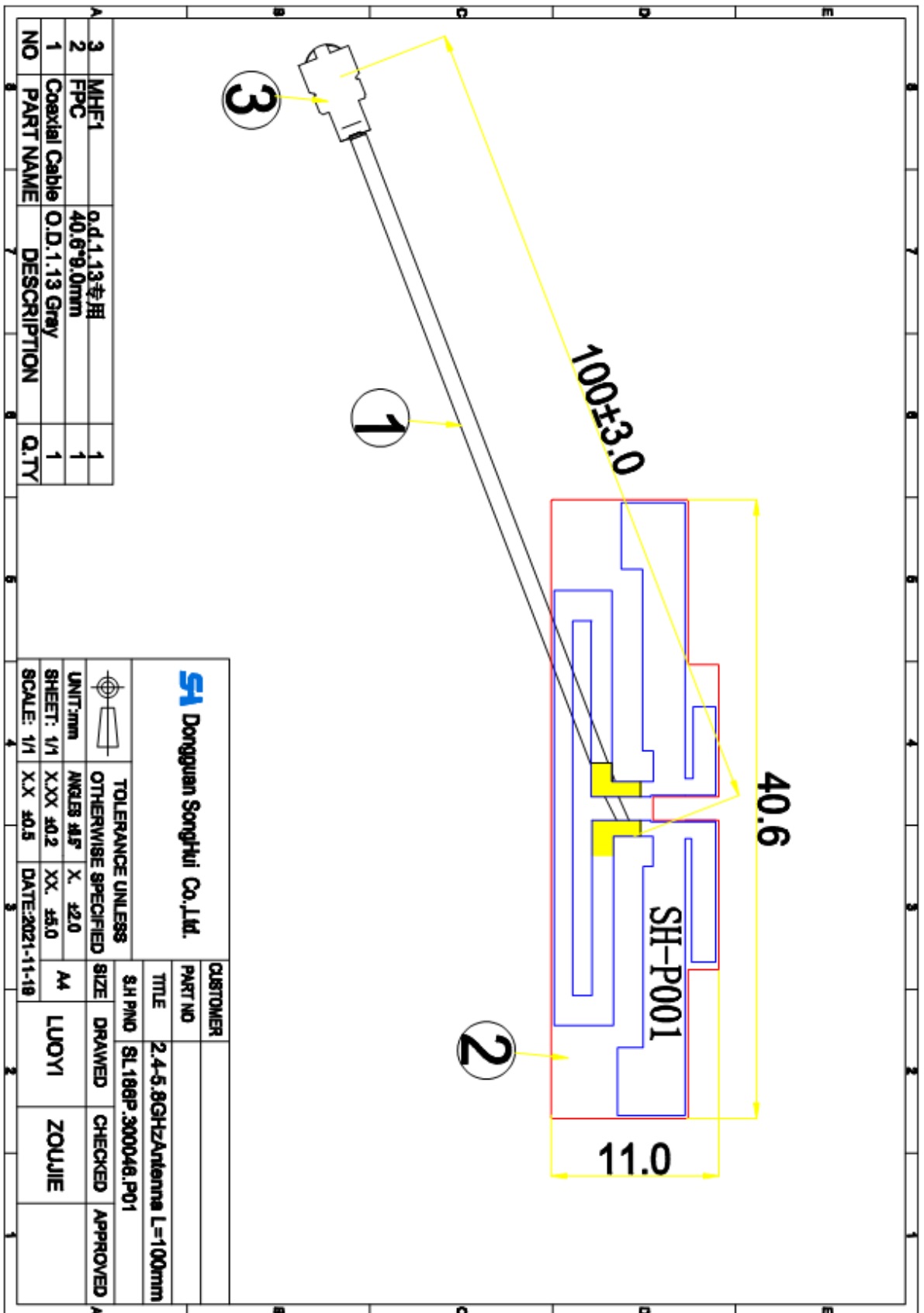
CUSTOMER APPROVED BY		
APPROVAL	CHIEF	SUPERVISOR

SUPPLIER SIGNATURE		
APPROVAL	CHECK	DESIGN
sunny	ZouJie	LuoYi



Acknowledgment item list

NO.	(Contents)	(Number of Page)	(Page Code)
1	Spec Cover	1	1
2	Spec Item	1	2
3	Drawing	1	3
4	Test Reports	1	4
5	S Parameter	1	5
6	Gain Test	1	6
7	Gain Test	1	7
8			
9			
10	-	-	-
11	-	-	-
12	-	-	-



add: No. 26, Foxin Juxiang 2nd Road, Dalang Town, Dongguan
City: 0769-82226176 fax: 0769-82226175



Test Reports

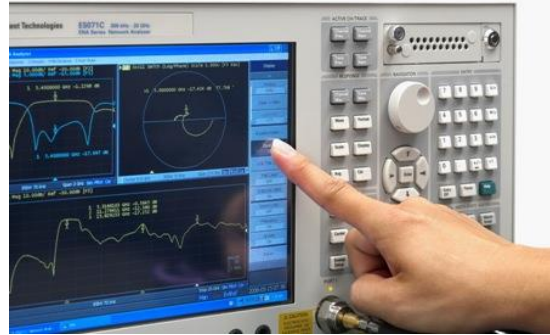
Electrical Properties	
Frequency	2.4-5.8GHz
Impedance	50 Ohm Nominal
V.S.W.R	1.92 : 1 Max
Return Loss	-10 dB Max
Radiation	Omni-directional
Gain (Peak)	3.53dBi
Cable Loss	3.2dB / m Max @ 2450 MHz
Polarization	Linear, Vertical
Admitted Power	1 W
Connector	MHF1
Physical Properties	
Antenna Material	FPC
Cable Type	O.D. 1.13mm // L= 100mm
Operating Temp.	-10 ~ +60 °C
Storage Temp.	-10 ~ +70 °C
Cable Color	GRAY

add: No. 26, Foxin Juxiang 2nd Road, Dalang Town, Dongguan
City: 0769-82226176 fax: 0769-82226175



S Parameter Test

Agilent E5071C



1 Active Ch/Trace 2 Response 3 Stimulus 4 Mkr/Analysis 5 Instr State

▶ Tr1 S33 SWR 1.000/ Ref 1.000 [F1]

1	2.400000000	GHz	1.1661
2	2.450000000	GHz	1.1857
3	2.500000000	GHz	1.5171
4	5.150000000	GHz	1.2712
5	5.500000000	GHz	1.2235
>6	5.850000000	GHz	1.0465

Format

SWR

Log Mag

Phase

Group Delay

Smith ▶

Polar ▶

Lin Mag

• SWR

Real

Imaginary

1 Start 2 GHz

IFBW 70 kHz

Stop 6.2 GHz

Cor

Meas

Stop

ExtRef

Ready

Svc

2019-11-24 09:46

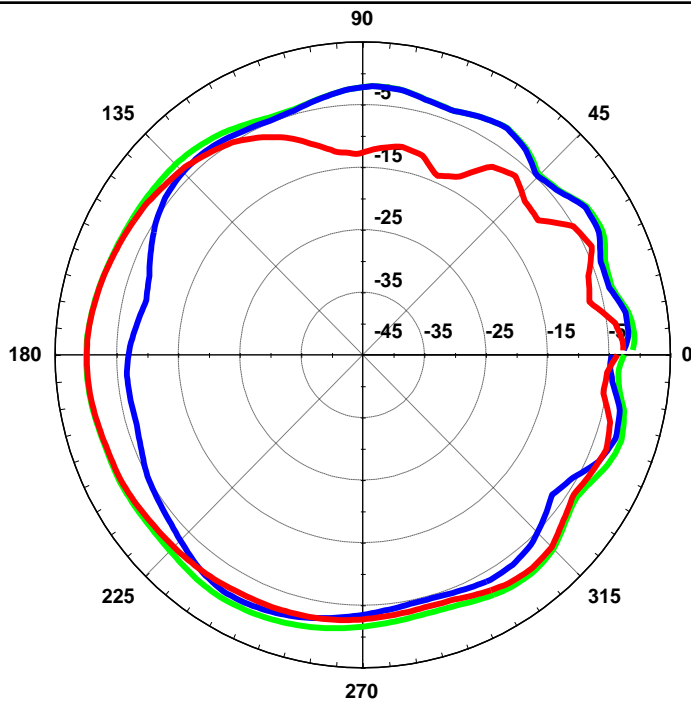
add: No. 26, Foxin Juxiang 2nd Road, Dalang Town, Dongguan
City: 0769-82226176 fax: 0769-82226175



增益测试

Gain Test

*Antenna
Radiation
Pattern
VS
Gain*

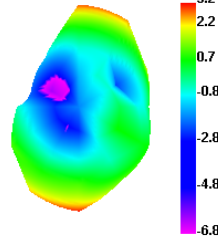




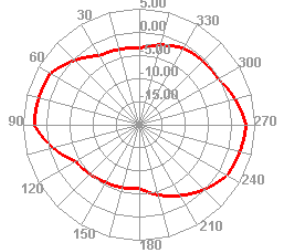
Freq (MHz)	Effi (%)	Gain (dBi)
2400	71.08	3.2
2410	71.26	3.28
2420	69.01	3.23
2430	70.8	3.49
2440	67.33	3.41
2450	68.61	3.53
2460	63.87	3.14
2470	61.53	2.74
2480	62.87	2.54
2490	68.06	2.77
2500	65.5	2.75

Freq (MHz)	Effi (%)	Gain (dBi)
5150	55.88	2.57
5200	51.65	2.47
5250	51.61	2.39
5300	53.79	2.6
5350	66.51	2.99
5400	72.23	3.75
5450	70.19	2.59
5500	58.5	1.81
5550	58.05	1.95
5600	61.17	2.99
5650	66.96	3.41
5700	73.22	3.79
5750	77.19	4.5
5800	73.34	4.96
5850	65.81	4.73

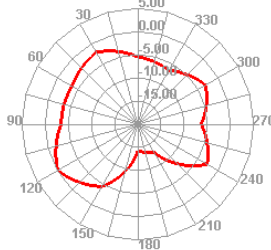
2400.000MHz



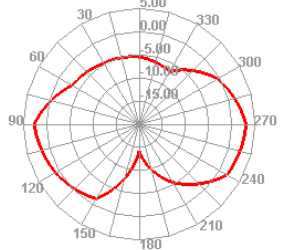
2400.000MHz H



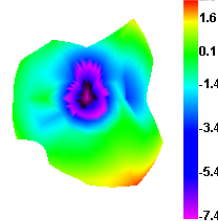
2400.000MHz E1



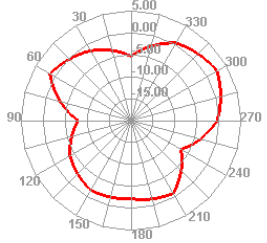
2400.000MHz E2



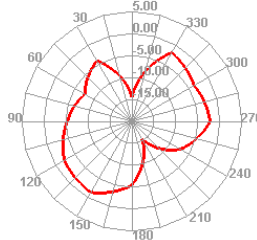
5150.000MHz



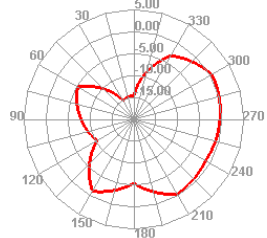
5150.000MHz H



5150.000MHz E1



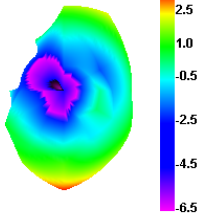
5150.000MHz E2



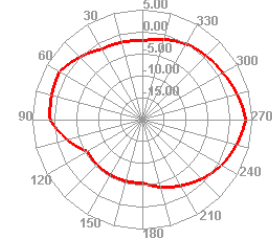


天线方向图

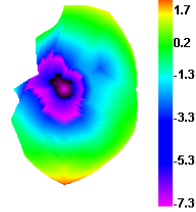
2450.000MHz



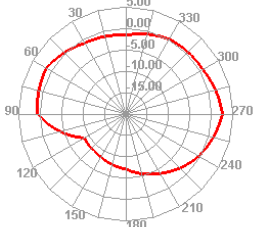
2450.000MHz H



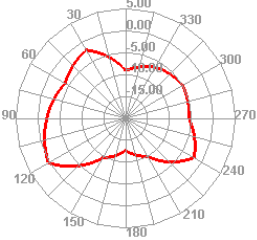
2500.000MHz



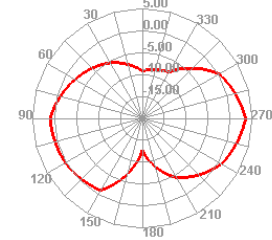
2500.000MHz H



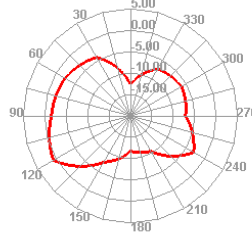
2450.000MHz E1



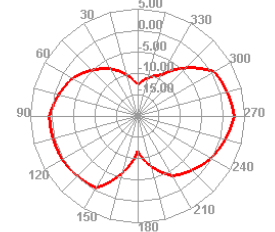
2450.000MHz E2



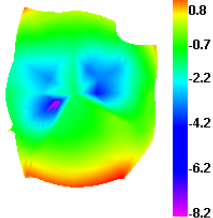
2500.000MHz E1



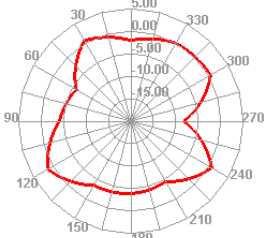
2500.000MHz E2



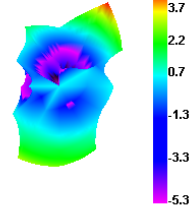
5500.000MHz



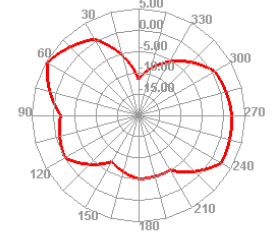
5500.000MHz H



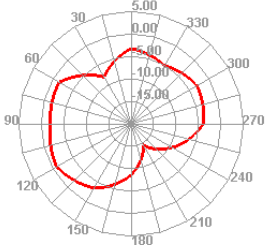
5850.000MHz



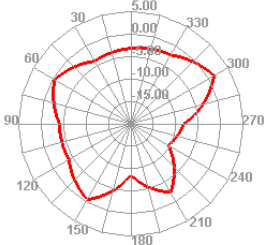
5850.000MHz H



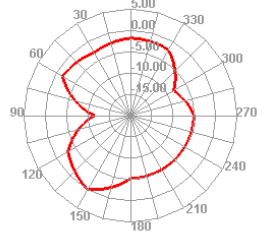
5500.000MHz E1



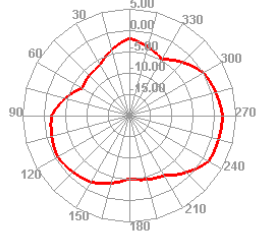
5500.000MHz E2



5850.000MHz E1



5850.000MHz E2



add: No. 26, Foxin Juxiang 2nd Road, Dalang Town, Dongguan
City: 0769-82226176 fax: 0769-82226175