

Instruction Manual

- Thank you for choosing our remote control toys. To ensure proper use, please read the following instruction manual and know enough about the products before use.

⚠ Note:

■ Electronic control products

Only suitable for children over 6 years old. When all the electronic products are in use, people should pay attention to danger and prevent electric shock.

Maintenance:

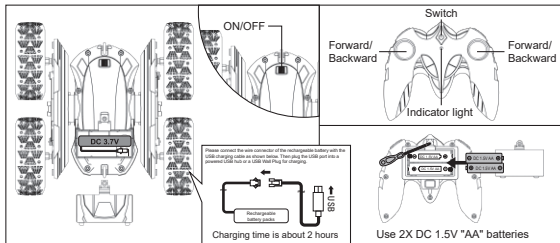
This product contains electronic components and must not be used in water or in a humid environment. People should use a dry rag to wipe the stained surface.

How to install the battery pack

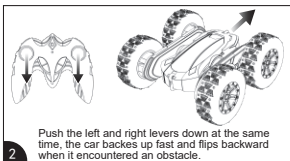
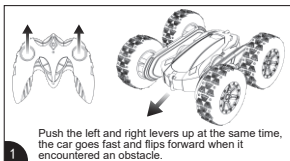
1. Press the "OFF" button on the car and then remote control (If there is ON/OFF).
2. Use a Phillips head screwdriver to open the battery cover.
3. Install the rechargeable battery pack as indicated below, and install the battery according to the corresponding "+" and "-" electrodes in the battery compartment.
4. Close the battery cover and lock it with the Phillips head screw.

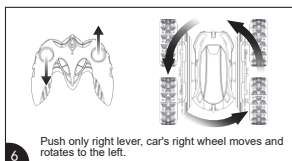
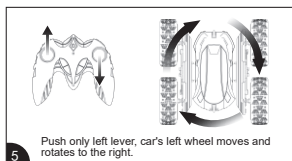
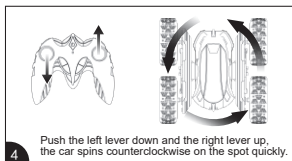
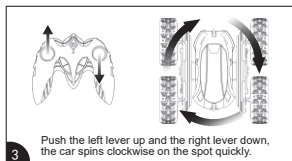
Operation of the remote control and the car

1. Push the car switch to the "ON" position. Press the power switch on the remote control.
2. Then operate the car.
3. When the car begins to lose performance, power or function, it may be the time to replace / charge the battery.



Basic Product Operation Diagram





Safe use of batteries

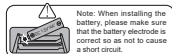
1. The battery electrode cannot be short-circuited.
2. Non-rechargeable batteries cannot be charged.
3. The rechargeable battery should be used and charged under the supervision of an adult.
4. If you do not use the product for a long time, please take out the batteries from both the remote control car and the remote control.
5. Safely dispose waste batteries. Please do not put the waste batteries into the fire, because the battery leak will cause an explosion.
6. Before using the charger, carefully check the thread end, plug, accessories and related parts; if damage occurs, the parts should not be used until the repair is completed.
7. The used battery needs to be removed from the toy.
8. This manual has important information, so please keep this manual well and use it when needed.
9. Packaging materials need to be retained because there is important information inside.
10. The rechargeable battery should be removed from the toy before charging.

Maintenance

1. If the car does not work for a long time, please remove the batteries.
2. When cleaning, power off the car then gently wipe the car with a damp cloth.
3. Do not place the toy car in a place with high temperature, humidity and direct sunlight.
4. Do not put the toy car in the water as this will damage the electronic components.

Note

1. In the case of insufficient battery power, the car will lose its flip function during driving.
2. Please do not drive on smooth ground, otherwise the car's flip function will be lost.
3. Please ensure that the battery pack is fully charged.



Model: 3300

Input: DC 3.7V

Frequency: 2.4GHz

Transmission: Max 0DBi

Manufacturer

Shantou Globalwin Intelligent Technology Co., Ltd.

No. 133, Block 7-14, Kaide Garden, No.145 Jinsha Road, Longhu District, Shantou City,
Guangdong, China, 515000

Email: chowlin@toys-china.com

EC REP

C&E Connection E-Commerce (DE) GmbH

Zum Linnegraben 20, 65933, Frankfurt am Main, Germany

E-mail: info@ce-connection.de

Phone: +49 017 46508451

UK REP

Sea&Mew Accounting Ltd

Electric Avenue Vision 25, London, Enfield EN3 7GD

E-mail: info@seamew.net

TEL: +44 7399648608

Information on electrical and electronic equipment

The following information is intended for users of electrical and/or electronic equipment in private households.

1. Separate collection of waste equipment

Electrical and electronic equipment that has become waste is referred to as old equipment. Owners of WEEE must dispose of it separately from unsorted municipal waste. Old appliances do not belong in the household waste, but in special collection and return systems.

2. Batteries and rechargeable batteries as well as lamps

As a rule, owners of old appliances must separate old batteries and accumulators that are not enclosed in the old appliance, as well as lamps that can be removed from the old appliance without destroying it, from the old appliance before handing it in at a collection point. This does not apply if the WEEE is handed over to public waste management authorities and separated from other WEEE there for the purpose of preparation for reuse.

3. Possibilities for the return of old devices

If you have old appliances, you can hand them in at the facilities set up and available by public waste disposal authorities for the return or collection of old appliances for the purpose of proper disposal of the old appliances. If necessary, it is also possible to hand in electrical and electronic equipment there for the purpose of reusing the equipment. For more information, please contact the respective collection or take-back point.

4. Data protection notice

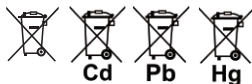
Old devices often contain sensitive personal data. This applies to information and telecommunications technology devices such as computers and smartphones. In your own interest, please note that each end user is responsible for deleting the data on the old devices to be disposed of.

5. Meaning of the symbol "crossed-out dustbin"

The symbol of a crossed-out wheeled garbage can regularly be displayed on electrical and electronic equipment indicates that the respective device must be collected separately from unsorted municipal waste at the end of its service life.

Information on the disposal of used batteries

1. The symbol of the crossed-out garbage can on batteries or accumulators indicates that they must not be disposed of in household waste at the end of their life. For batteries containing more than 0.0005% mercury by mass, more than 0.002% cadmium by mass, or more than 0.004% lead by mass, the chemical name of the respective pollutant is located below the trash can symbol - where "Cd" stands for cadmium, "Pb" stands for lead, and "Hg" stands for mercury.



2. You are legally obliged to return old batteries and accumulators after use. You can do this free of charge at a retail store or other collection point in your area. Addresses of suitable collection points can be obtained from your city or local government.

Batteries may contain substances that are harmful to the environment and human health. Special care should be taken when handling batteries containing lithium due to the particular risks involved. The separate collection and recycling of old batteries and accumulators is intended to avoid negative effects on the environment and human health.

Please avoid the generation of waste from old batteries as far as possible, e.g. by preferring batteries with a longer life or rechargeable batteries. Please avoid littering public spaces by not carelessly leaving batteries or electrical and electronic equipment containing batteries. Please consider ways to reuse a battery instead of disposing of it, for example by reconditioning or repairing the battery.

BATTERY WARNING:

KEEP OUT OF REACH OF CHILDREN
Swallowing can lead to chemical burns, perforation of soft tissue, and death. Severe burns can occur within 2 hours of ingestion. Seek medical attention immediately.



Material Composition of AA R6P UM-3 1.5V Carbon Battery	
Chemical Composition	Weight (%)
Zinc	28%
Manganese dioxide	22%
Water	20%
Carbon black	7.5%
Zinc Chloride	9%
Ammonium Chloride	5.0%
Carbon	5.0%
Copper	2.3%
Coated paper	1.2%

Suitable extinguishing media:

Use extinguishing agent suitable for local conditions and the surrounding environment. Such as dry powder, CO₂.

Material composition of 14500 3.7V lithium-ion batteries		
Ingredient Name	Molecular formula	Content
Lithium Manganate	LiMn ₂ O ₄	35%
Graphite	C	18%
Lithium hexafluorophosphate	LiPF ₆	16%
Copper Foil	Cu	6%
Aluminium foil	AL	4%
Diaphragm	(C ₂ H ₄) n / (C ₃ H ₆) n	0.3%
Caps	Fe	2.7%
	AL	
	(C ₃ H ₆) n	
Steel Shell	Fe	18%

Please use water, dry sand and other proper fire extinguishing media.

FCC Statement

This equipment has been tested and found to comply with the limits for a Class B digital device, pursuant to Part 15 of the FCC Rules. These limits are designed to provide reasonable protection against harmful interference in a residential installation. This equipment generates uses and can radiate radio frequency energy and, if not installed and used in accordance with the instructions, may cause harmful interference to radio communications. However, there is no guarantee that interference will not occur in a particular installation. If this equipment does cause harmful interference to radio or television reception, which can be determined by turning the equipment off and on, the user is encouraged to try to correct the interference by one or more of the following measures:

- Reorient or relocate the receiving antenna.
- Increase the separation between the equipment and receiver.
- Connect the equipment into an outlet on a circuit different from that to which the receiver is connected.
- Consult the dealer or an experienced radio/TV technician for help.

This device complies with part 15 of the FCC Rules. Operation is subject to the following two conditions:

(1) This device may not cause harmful interference, and (2) this device must accept any interference received, including interference that may cause undesired operation.

Changes or modifications not expressly approved by the party responsible for compliance could void the user's authority to operate the equipment.