

Bluetooth FM Transmitter for Car

USER GUIDE

BT25



BRIEF INTRODUCTION

Thanks for choosing our Bluetooth FM Transmitter. This device helps to stream music and call wirelessly from your Bluetooth device to your car audio system. The built-in microphone provides you with an amazing hands free function. It is also designed with a USB Disk slot, which lets you play music and enjoy your favorite songs through your car speakers. Please read the User Manual carefully before use. Hope this device make your driving more interesting and safer.

English (01-08)

Deutsch (09-16)

Français (17-24)

Español (25-32)

Italiano (33-40)

Manufacturer: LENCENT Technology Co.,Ltd.
Room1102, No 16 BaoNing Street, Tianhe District,
510520,Guangzhou Guangdong China

UK REP Prolinx Global LTD
27 Old Gloucester Street London,
WC1N 3AX, United Kingdom

EC REP Prolinx GmbH
Brehmstr. 56, 40239 Duesseldorf
Germany



FCC STATEMENT:

NOTE: This equipment has been tested and found to comply with the limits for a Class B digital device, pursuant to Part 15 of the FCC Rules. These limits are designed to provide reasonable protection against harmful interference in a residential installation. This equipment generates uses and can radiate radio frequency energy and, if not installed and used in accordance with the instructions, may cause harmful interference to radio communications. However, there is no guarantee that interference will not occur in a particular installation. If this equipment does cause harmful interference to radio or television reception, which can be determined by turning the equipment off and on, the user is encouraged to try to correct the interference by one or more of the following measures:

- Reorient or relocate the receiving antenna.
- Increase the separation between the equipment and receiver.
- Connect the equipment into an outlet on a circuit different from that to which the receiver is connected.
- Consult the dealer or an experienced radio/TV technician for help

Changes or modifications not expressly approved by the party responsible for compliance could void the user's authority to operate the equipment.

This device complies with part 15 of the FCC rules. Operation is subject to the following two conditions:
(1) this device may not cause harmful interference, and (2) this device must accept any interference received, including interference that may cause undesired operation.

RF Exposure Warning Statements:
This equipment complies with FCC radiation exposure limits set forth for an uncontrolled environment. This equipment shall be installed and operated with minimum distance 20cm between the radiator & body.

CORRECT DISPOSAL OF THIS PRODUCT



(Waste Electrical & Electronic Equipment)
This making shown on the product or its literature, indicates that it should not be disposed with other household wastes at the end of its working life.

To prevent possible harm to the environment or human health from uncontrolled waste disposal, please separate this from other types of wastes and recycle it responsibly to promote the sustainable reuse of material resources.

Household user should contact either the retailer where they purchased this product or their local government office for details of where and how they can take this item for environmentally safe recycling.

Business users should contact their supplier and check the terms and conditions of the purchase contract. This product should not be mixed with other commercial wastes for disposal.

PACKING CONTENTS

- FM transmitter*1
- Instruction manual*1

SPECIFICATION

Model: BT25
Bluetooth Version:5.0
Frequency Stability: ±10ppm
Product Input: 12-24V
Dual USB Charger Output: QC3.0+PD20W
USB (max Capacity) : 64GB
Music Format: MP3,WMA, APE,FLAC,WAV
Product size: 51.2*48.2*77mm
Weight: 42.5g

IMPORTANT INSTRUCTIONS

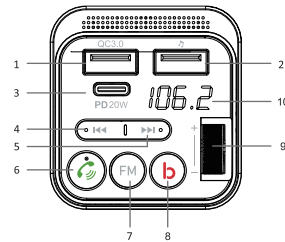
1. SAVE THIS INSTRUCTION- This manual contains important safety and operating instructions of the product.
2. Please read the instruction carefully before use.
3. For the best audio quality, please set the volume of your phone and FM transmitter to the max, and then adjust the car volume to an appropriate level.
4. If the audio has too much noise, please try another blank FM frequency.
5. To prevent your car battery from being drained, it's better to unplug the product after you turn off the car.
6. Do not expose the product to rain, moisture, or snow.
7. Do not disassemble the product, incorrect reassembly may result in a risk of electric shock or fire.
8. To reduce risk of electric shock, unplug the product before attempting any maintenance. Turning off controls will not reduce this risk.

- 01 -

FEATURES

1. Dual USB Charging Ports: QC3.0+PD20W(MAX PD24W)
2. 9 light color modes: Orange, Blue, Green, Purple, Yellow, Cyan, White and Rainbow and off. Light switch design creates a new atmosphere for the car interior space.
3. Transmit music/navigation from your Bluetooth enabled phone to car speakers.
4. Transmit music from U disk(Up to 64G) to car speakers. Supports U disk in FAT32 format and music in Mp3/WMA/FLAC/WAV format.
5. Enjoy hands-free phone call.
6. Bass boost function.
7. Bluetooth V5.0, auto-connect with the last connected device.
8. Detect car battery voltage when plugged into the cigarette lighter.
9. Activate phone voice assistance like Siri, Bixby, Google Assistant, etc..

DIAGRAM



- 02 -

1. QC3.0 Charging Port(18W)
2. USB Disk Reading Port
3. Type-C Charging Port(PD20W-MAX 24W)
4. ① Previous Song ② FM-
5. ① Next Song ② FM+
6. ① Answer/hang up/reject call ② Play/pause music
7. ① Press and hold for 3 seconds to activate Google Assistant&SIRI ② Press and hold for 3 seconds to turn on/off product
8. ① Bass Function ② Press and hold for 3 seconds to change light
9. Volume+/- FM+/-
10. LED Display

OPERATION

Function	Operation
Power On/Off	Plug/Unplug the product into/from the car cigarette lighter to turn off the transmitter, or press and hold the button "FM" for 3 seconds to turn off the Bluetooth function, but the charging function will remain.
Display car battery voltage	Plug the product into the car cigarette lighter, the display will show car battery voltage for 1-3 sec.
Adjust Frequency	Press the "FM" button first, the display will show the frequency number and keep flashing, then press "◀" "▶" or rotate the golden wheel up or down to change its frequency.

- 03 -

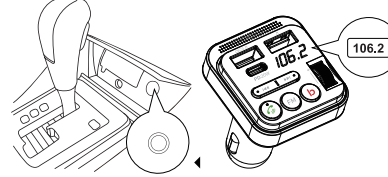
Play/ Pause Music /Answer/Hang Up Call	Press the phone button
Reject a call	Press and hold the phone button for 2 seconds
Redial the last number	Double press the phone button
Switch call audio	Under the call mode, press and hold the phone button to switch call audio from private phone call or audio broadcast.
Volume Up/Down	Rotate the golden wheel up/down
Next/Previous Song	Press "◀" "▶" "
Switch light mode	Press and hold the button "b", the light will keep flashing, then press "◀" "▶" to change the light mode, the light will stop flashing automatically in 5 seconds or you can press and hold the button "b" again to confirm.
Activate phone voice assistance	When Bluetooth is connected, press and hold the phone button to activate phone voice assistant.
Bass boost on/off	Press button "b", "b0" showing on display means normal, "b1" means bass boost.

HOW TO INTALL:

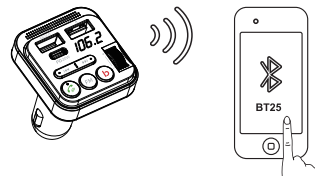
Bluetooth Mode: Step 1-5
U Disk Mode: Step 1,3,4,6

- 04 -

1. Plug the transmitter into your car cigarette lighter, the display will show the battery voltage first and then "bt" and keep flashing, which means it is in pairing mode.



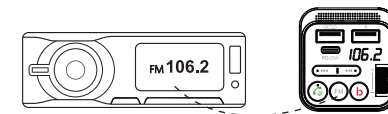
2. Turn on the Bluetooth function of your phone, search for Bluetooth devices and select "BT25" to connect. The display will stop flashing once it is paired successfully.



3. Tune the car FM radio to a blank frequency. Any station is fine as long as it is not in used, blank (no broadcast). Please note that you should set your car radio to a "Manual Search" mode. The radio will skip the blank FM frequency automatically if it is under the mode of "Auto Search"

- 05 -

4. Pair the frequency on the transmitter with the same one of your car FM radio. (Please refer the OPERATION Part "Adjust Frequency") Press the "FM" button first, the display will show the frequency number and keep flashing, then press "◀" "▶" or rotate the golden wheel "b" up or down to change its frequency and set it to the one you want.

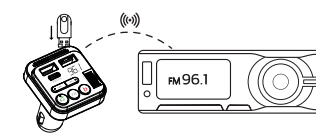


5. You can play music or navigation from phone through your car speakers or answer hands free call when both of the frequencies are matched. **Tip:** Set the phone volume and transmitter volume to the max level first, then adjust your car volume to an appropriate level to get the best sound quality.



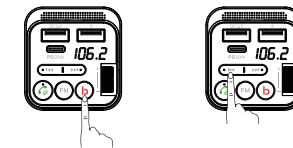
- 06 -

6. If you want to use an U disk, please also set up the product by following step 1, 3, 4 and insert the U disk into the product. It will say "U Disk play" and it will automatically detect and play the music. (Mp3/WMA/FLAC/WAV format) **Note:** The transmitter supports U disk in FAT32 format. If the transmitter does not read the U disk, please re-format the U disk to FAT32.



ADJUST LIGHT

Press and hold the button "b", the light will keep flashing, then press "◀" "▶" to change the light mode, the light will stop flashing automatically in 5 seconds or you can press and hold the button "b" again to confirm.



- 07 -

TROUBLE SHOTTING

No sound	<p>If connected via Bluetooth:</p> <ul style="list-style-type: none"> • Check the volume on the radio, FM transmitter and your phone • Check the Bluetooth connection • Check if you have used a blank FM station and make sure the station on the transmitter and the radio are set the same <p>If connected with USB Disk:</p> <ul style="list-style-type: none"> • Check if the USB disk is in FAT32 format, if not, please reformat it. • Check if the music is in Mp3/WMA/FLAC/WAV format • Check if the capacity of the U disk is within 64GB • Check if you have used a blank FM station and make sure the station on the transmitter and the radio are set the same
Display car battery voltage	Plug the product into the car cigarette lighter, the display will show car battery voltage for 1-3 sec.

- 08 -