

LENCENT

## BS022 BLUETOOTH FM TRANSMITTER

5.3  
version

►► User Guide

English ( 01-09 )



### Warm Tip:

Do not hurry to insert the transmitter into the car cigarette lighter the first time you use it. After starting your car, first tune your car radio to a blank FM station. It is normal to hear a slight rustle sound on a blank station. Then insert the transmitter into the cigarette lighter and adjust the frequency of the transmitter to the same one as the radio. When both of the frequencies are matched, the radio will become quiet and there will be no static interference. Finally you can connect your phone with the product by connecting the Bluetooth and play music or have a hands-free calling from the phone using the audio system in your car.

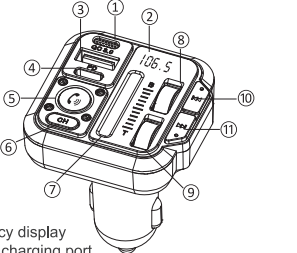
The built-in wireless V5.3 provides hands-free call function and music transmission, allowing you to transmit music and calls directly from your wireless device to your car audio system. This transmitter is also equipped with two fast charging ports (QC3.0+PD 20W), which will greatly save your time in charging phones. Please read the user manual carefully before use. Hope this device will make your driving more fun and safer.

**Package contents:**  
Car Wireless FM Transmitter  
User Manual

### Specifications:

- Model: BS022
- Wireless Version: V5.3
- Wireless Connection Distance: 10m (Max.)
- FM frequency ranges for different countries:  
88,1-107,9MHz (USA&CA) 87,5-108,0MHz (UK&EU)
- FM transmission distance: about 3M
- Input: DC12-24V
- Type-c Output: PD20W(5V=3A,9V=2.22A,12V=1.67A)
- USB output: QC3.0 (5V=3A,9V=2A,12V=1.5A)
- Total power: 38W(Max.)

### Product Overview:



1. Microphone
2. FM frequency display
3. QC 3.0 fast charging port
4. PD20W fast charging port
5. Multi-function button :  
① Press: answer/hang up call, play/pause music  
② Press and hold : activate Siri & Google Assistant
6. CH button
- ① Press: show FM frequency (channel)
- ② Press and hold : power on/off
7. Ambient light bar
8. BASS EQ Control Scroll up: BASS EQ Enhancement  
Scroll Down: BASS EQ weakening
9. Treble EQ Control Scroll up: Treble EQ Enhancement  
Scroll Down: Treble EQ weakening
10. ① Press: previous Song  
(FM frequency +, under frequency modulation mode)  
② Press and hold: volume +
11. ① Press: next song  
(FM frequency -, under frequency modulation mode)  
② Press and hold: volume -

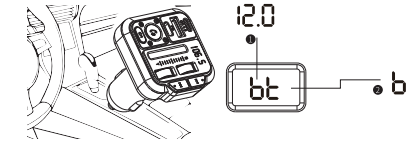
### How to use: FM Transmitter Radio

1. Tune your car radio to a clean, empty station with no programming.

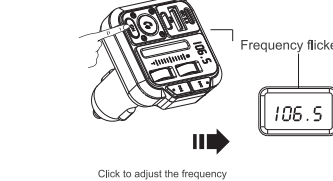
#### Tips:

What is a blank station?  
- A blank station with no programming will only make a slight rustle or snow sound on your car radio. If there is no blank station, please check if you have set the car radio to manual search mode, as the radio will skip the blank station automatically if it is under auto search mode.

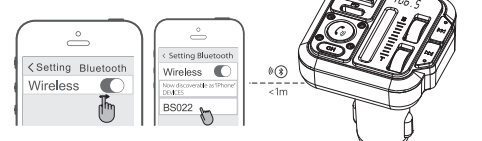
2. Plug the FM transmitter into the cigarette lighter or power port. The transmitter will automatically power on with the screen displaying the car's battery voltage first for a few seconds followed by the letters "bt", standing for Bluetooth.



3. Press the "CH" button on the transmitter to adjust the frequency and tune it to the same one as the radio. When the display shows the frequency number and keeps flickering, adjust the frequency by pressing "◀" or "▶".

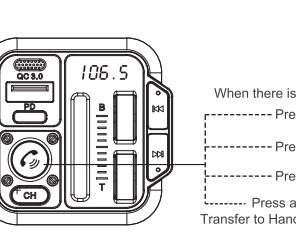


4. Turn on the Bluetooth function on your phone and select "BS022" to connect. If a password is required, please enter "0000" or "1234". The display will stopped flashing once it is connected successfully.

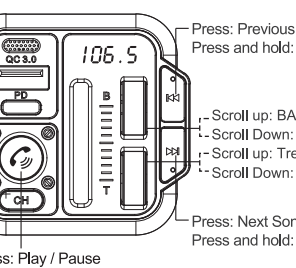


5. You can then play music or have a hands-free calling from the phone using the audio system in your car.

### Hands-free Calling Function



### Music Playing Function



Note: Since the Bass and treble EQ adjustment effect is strong, it is recommended to adjust both of them at the same time for the best sound quality. The sound will be easily affected if only one of them is adjusted.

### Special Function

1. Turn on / off the ambient light bar:  
Press "☀" twice
2. Activate phone assistant such as Siri or Google Assistant:  
Press and hold the "☎" button
3. Turn on/off the transmitter but keep the charging function  
Press an hold the "CH" button
4. Transfer Handset or Hands-free mode during a call  
Press and hold "☎" during a call

### USB Charging function

USB socket with QC3.0, supports 5V/3A, 9V/2A, 12V/1.5A fast charging. USB C socket marked "PD" is a fast charging socket that supports PD (20W) protocol, DC3.5-6.5V/3A, DC3.5-6.5V/3A, 6.5-9V/2.22A, and 9-12V/1.67A.

**Trouble Shooting:**  
Transmitter does not turn on  
1. Check if the cigarette lighter is functional  
2. Press and hold the "CH" button for 5 seconds to turn on the transmitter

### Turn on/off ambient light bar:

1. Press the "☀" twice to turn on/off the light

### Can not play music

1. Check if the Bluetooth has been successfully connected. If yes, make sure you have used a blank FM radio station and make sure the frequency on the transmitter has been set to the same one as the radio.

### Change the frequency on the transmitter

1. Press the "CH" button, the display will show the frequency number and keep flickering, then press the "◀" or "▶" to adjust the frequency.

### Can not hear the voice of other party

1. After answering the call, try to press an hold the "☎" button to switch answering mode from "Handset Mode" to "Hands-Free mode".

### Sound is not good

1. Since the Bass and treble EQ adjustment effect is strong, it is recommended to adjust both of them for the best sound quality. The sound will be easily affected if only one of them is adjusted.
2. For the best audio quality, please set the volume of your phone and FM transmitter to the max, and then adjust the car volume to an appropriate level.

### Warm Tips:

1. When the car's battery voltage is less than 12V, the display will flash to remind you to charge the car battery.
2. The next time you use it, if the Bluetooth function on your phone is active when you turn on the transmitter, the Bluetooth connection will be maintained automatically with your phone.
3. You need to hang up the call via the phone if the call is made under handset mode.
4. To prevent the car battery from being drained, it's better to unplug the product after you turn off the car.
5. Do not expose the product to rain, moisture, or snow.
6. Do not disassemble the product. Incorrect reassembly may result in a risk of electric shock or fire.

### FCC STATEMENT:

NOTE: This equipment has been tested and found to comply with the limits for a Class B digital device, pursuant to Part 15 of the FCC Rules. These limits are designed to provide reasonable protection against harmful interference in a residential installation. This equipment generates uses and can radiate radio frequency energy and, if not installed and used in accordance with the instructions, may cause harmful interference to radio communications. However, there is no guarantee that interference will not occur in a particular installation. If this equipment does cause harmful interference to radio or television reception, which can be determined by turning the equipment off and on, the user is encouraged to try to correct the interference by one or more of the following measures:

- Reorient or relocate the receiving antenna.
- Increase the separation between the equipment and receiver.
- Connect the equipment into an outlet on a circuit different from that to which the receiver is connected.
- Consult the dealer or an experienced radio / TV technician for help

Changes or modifications not expressly approved by the party responsible for compliance could void the user's authority to operate the equipment.

This device complies with part 15 of the FCC rules. Operation is subject to the following two conditions:  
(1) this device may not cause harmful interference, and  
(2) this device must accept any interference received, including interference that may cause undesired operation.

RF Exposure Warning Statements:  
This equipment complies with FCC radiation exposure limits set forth for an uncontrolled environment.  
This equipment shall be installed and operated with minimum distance 20cm between the radiator & body.

### CORRECT DISPOSAL OF THIS PRODUCT

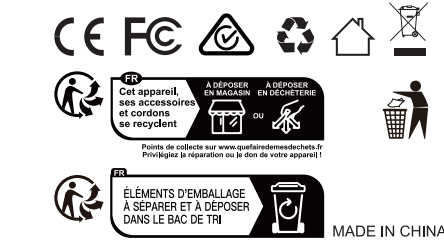
(Waste Electrical & Electronic Equipment)  
This marking shown on the product or its literature, indicates that it should not be disposed of with other household wastes at the end of its working life.

To prevent possible harm to the environment or human health from uncontrolled waste disposal, please separate this from other types of wastes and recycle it responsibly to promote the sustainable reuse of material resources.  
Household users should contact either the retailer where they purchased this product or their local government office for details of where and how they can take this item for environmentally safe recycling. Business users should contact their supplier and check the terms and conditions of the purchase contract.  
This product should not be mixed with other commercial wastes for disposal.

**LENCENT**  
Manufacturer: LENCENT Technology Co., Ltd.  
Room1102, No 16 BaoNing Street, Tianhe District, 510520, Guangzhou Guangdong China support@lencent.info

**Prolinx Global LTD**  
27 Old Gloucester Street London,  
WC1N 3AX, United Kingdom  
0044 20 39661193 eu@eulinx.eu

**Prolinx GmbH**  
Brehmstr. 56, 40239 Duesseldorf Germany  
+4921131054698 eu@eulinx.eu



MADE IN CHINA