

V20 快速使用说明书



产品概览



重要提醒:

耳机安装前, 请按快速手册指引连接手机, 试听音效和音量。
如安装到头盔后, 音效和音量有较大的差异, 请调整喇叭在头盔内的位置。

开机/关机

开机/关机

双击切换中英文语音播报
(断开蓝牙)



长按3秒开/关机



开机提示音



LED灯长亮

配对



蓝牙未连接LED灯快闪

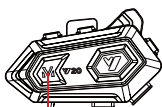


蓝牙模式提示音



蓝牙连接成功
LED灯慢闪

灯光开启与关闭



短按切换RGB灯效模式
长按关闭RGB灯关



灯效



灯光

音乐功能

暂停/播放音乐



短按



(音乐暂停时)



播放



(音乐播放时)



暂停



音量-键



(音乐播放时)



短按上一曲



(音乐播放时)



长按音量减小



音量+键



(音乐播放时)



短按下一曲



(音乐播放时)



长按音量加大

语音助手



短按

唤醒语音助手

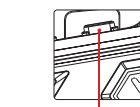
电话功能



接听模式切换
自动模式(≤10秒后)自动接听



(未连接蓝牙时)



双击音量+键 切换
手动接听/自动接听



自动模式



(来电中)

(≤10秒后自动接听)



自动接听



手动接听“短按”



(来电中)



接听



长按2秒



(来电中)



拒绝接听



通话时“短按”



(通话中)



结束通话



双击



未码重播



短按



(去电时)



取消去电

充电模式

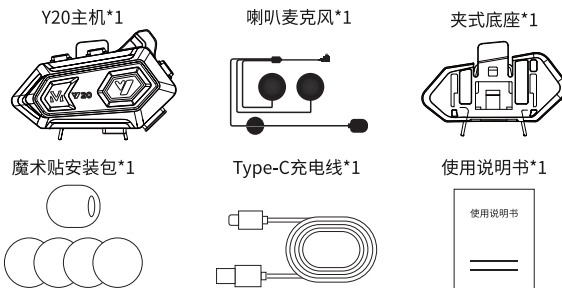


充电时长亮

充满关闭

(开机状态下, 插入充电器, 机器自动关机)

物品清单



注意事项

- 请勿将产品投入明火中, 避免发生爆炸;
- 请勿拆卸产品, 避免电子产品器件损坏;
- 请勿靠近尖锐器, 物对产品造成损坏;
- 长时间不用, 请放置干燥处。

Y20 QUICK INSTRUCTION MANUAL

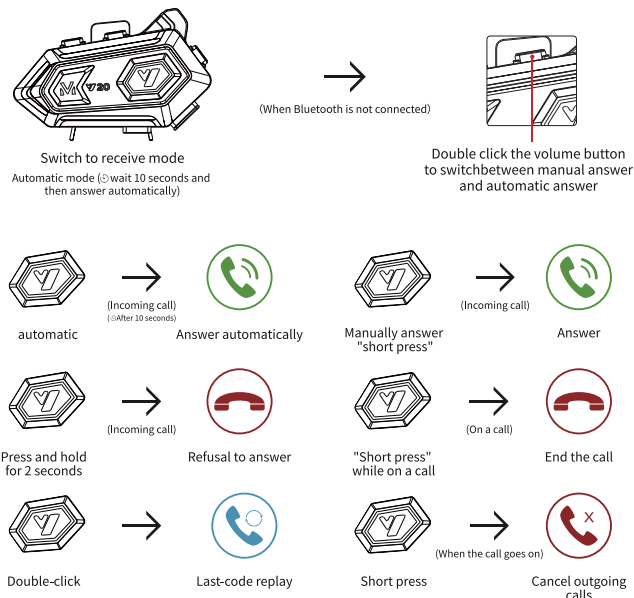
Product overview



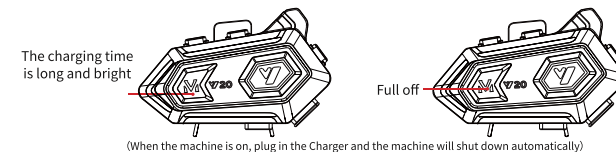
Important Notice:

Before installing the headphones, follow the Quick Manual instructions to connect your phone and listen to the sound and volume. If there is a large difference in sound effect and volume after installing it on the helmet, please adjust the position of the speaker in the helmet.

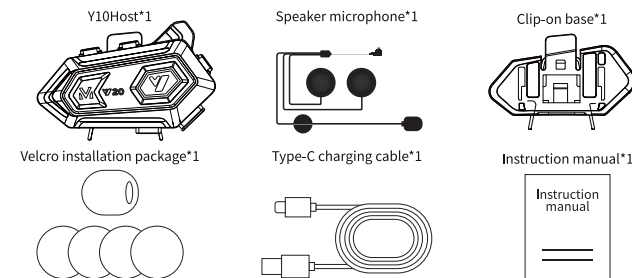
Phone features



Charging mode



List of items



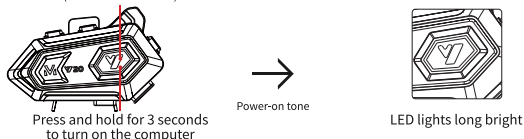
Notes

1. Do not put the product into the open flame to avoid explosion;
2. Do not disassemble the product. Avoid damage to product electronics;
3. Do not approach the sharp object, the object will cause damage to the product;
4. Do not use for a long time, please place in a dry place.

Power on/off

Power on/off

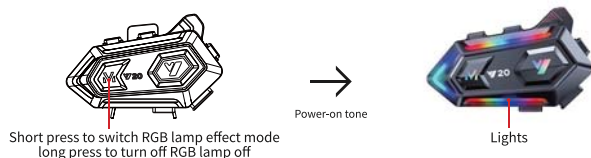
Double-click to toggle the Chinese and English voice broadcast (Disconnect Bluetooth)



Match

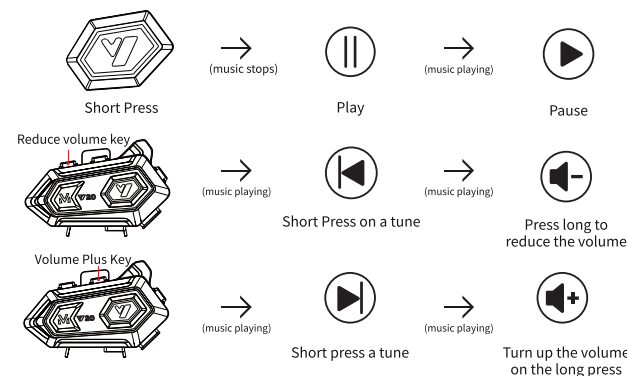


Lights on and off

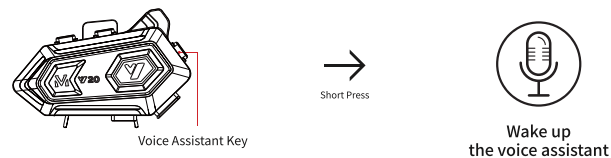


Music features

Pause/play music



Power broadcast/voice assistant



instruction warning

NOTE: This equipment has been tested and found to comply with the limits for a Class B digital device, pursuant to part 15 of the FCC Rules. These limits are designed to provide reasonable protection against harmful interference in a residential installation. This equipment generates uses and can radiate radio frequency energy and, if not installed and used in accordance with the instructions may cause harmful interference to radio communications. However, there is no guarantee that interference will not occur in a particular installation. If this equipment does cause harmful interference to radio or television reception, which can be determined by turning the equipment off and on, the user is encouraged to try to correct the interference by one or more of the following measures.

- Reorient or relocate the receiving antenna
- Increase the separation between the equipment and receiver.
- Connect the equipment into an outlet on a circuit different from that to which the receiver is connected.
- Consult the dealer or an experienced radio/TV technician for help

Changes or modifications not expressly approved by the party responsible for compliance could void the user's authority to operate the equipment. This device complies with Part 15 of the FCC Rules. Operation is subject to the following two conditions.

- (1) this device may not cause harmful interference, and
- (2) this device must accept any interference received, including interference that may cause undesired operation.