

# User Manual

## Wi-Fi Parking View/Rear View Camera



Please read this manual carefully and use it correctly  
and store it properly.

# Contents

Functional Parameters.....	01
Packing list.....	02
Installation.....	02
Application-Android.....	03
Application-iOS.....	04
Q&A.....	06
FCC warning.....	08

## Notice

1. Before installation please read the packing list chapter and check carefully when unpacking the box.
2. Read the installation chapter and prepare for the installation tools by yourself.
3. The installation position supposed to be adjusted by your specific vehicle and this manual is just for reference.
4. The power supply supposes to be specific for your vehicle.
5. Any specific vehicle encounters problem, please contact the manufacturer for support.
6. The product needs the app “VanKam” to display the video.
7. Please scan the following QR code or go to App Store(Apple) or Google Play(Android) to download the “VanKam” app.



# Functional Parameters

Mode	Battery Wi-Fi Camera
Resolution	1920x1080 (2Million)
Image Sensor	HD 1/2.9 inch
Viewing Angle	160 degree
Transmission Distance	Normal Wi-Fi distance, 100m in open distance
System	N/P Automatically
Transmission Bandwidth	20Mbps (Max)
Battery Capacity	4000mAh
Battery Level Display	Yes, 4Blue lights
Battery Charging Time	USB 5V 2A / 6h
Working Time	Working / 8h Standby / 80days
Camera Adjustable Angle	180 degree
Frequency	2400~2483.5MHz
ON/OFF Mode	Press to power ON/OFF
Installation Mode	Magnet base adsorption Installation
Parking Guide Line	ON/OFF Switchable
Night Vision	Support
SNR	50dB
Waterproof level	IP69K
Receive sensitivity	-94dBm
Material	Black aluminum alloy
Shockproof Level	5.9G
Compatible System	iOS / Android
Storage Temperature	-30°C ~ 85°C, RH95%MAX
Operation Temperature	-20°C ~ 70°C, RH95%MAX
Accessory	Type-C male power cable, 5dB antenna

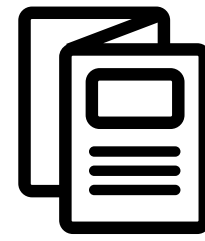
# Packing list



Camera



Type C charging cable



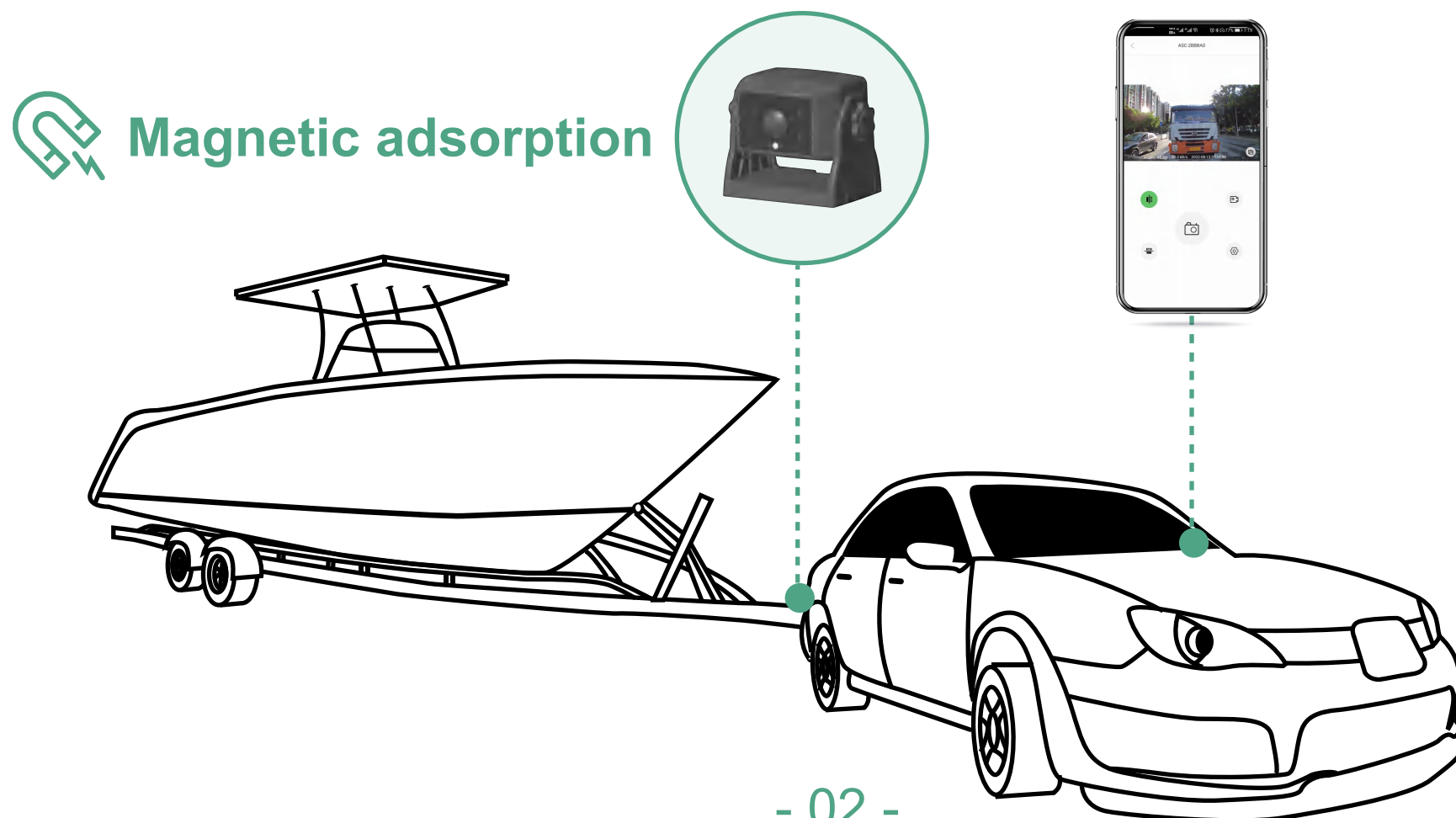
User manual



Adapter

# Installation

Please directly attach the device to the metal position required on the vehicle (super strong magnet base, can be easily attached to the metal)



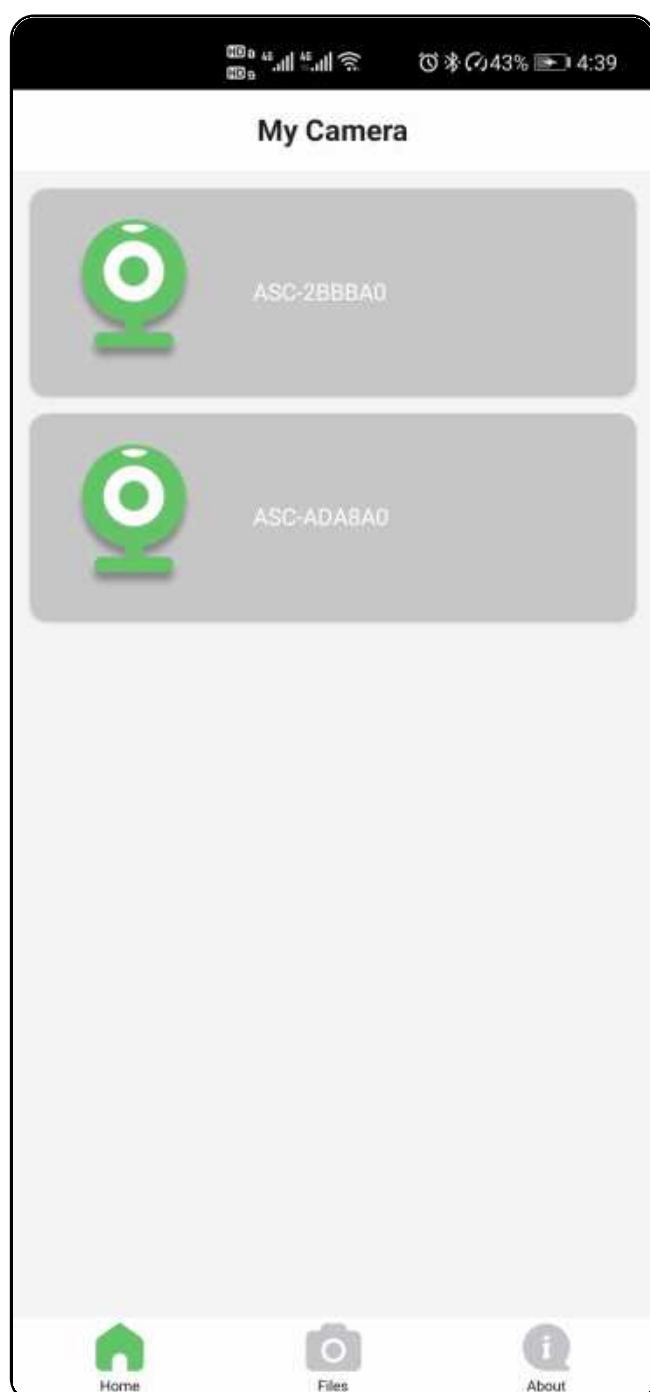
# Application - Android

- ① Open the app and the app will automatically scan nearby Wi-Fi camera.
- ② Select a Wi-Fi camera you want to connect and press the OK button to go to system Wi-Fi list.
- ③ Select the corresponding hotspot(above Android 10) and click the back button to return to the app.
- ④ The app will go to the live view page.

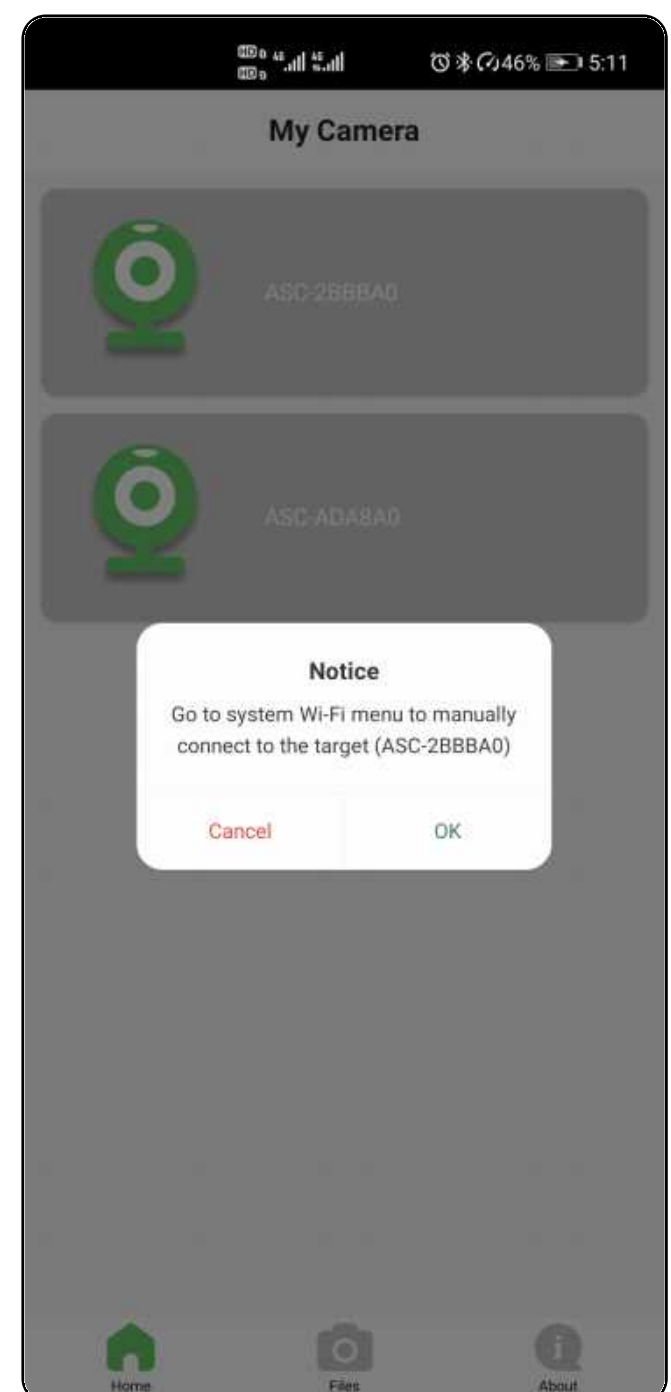


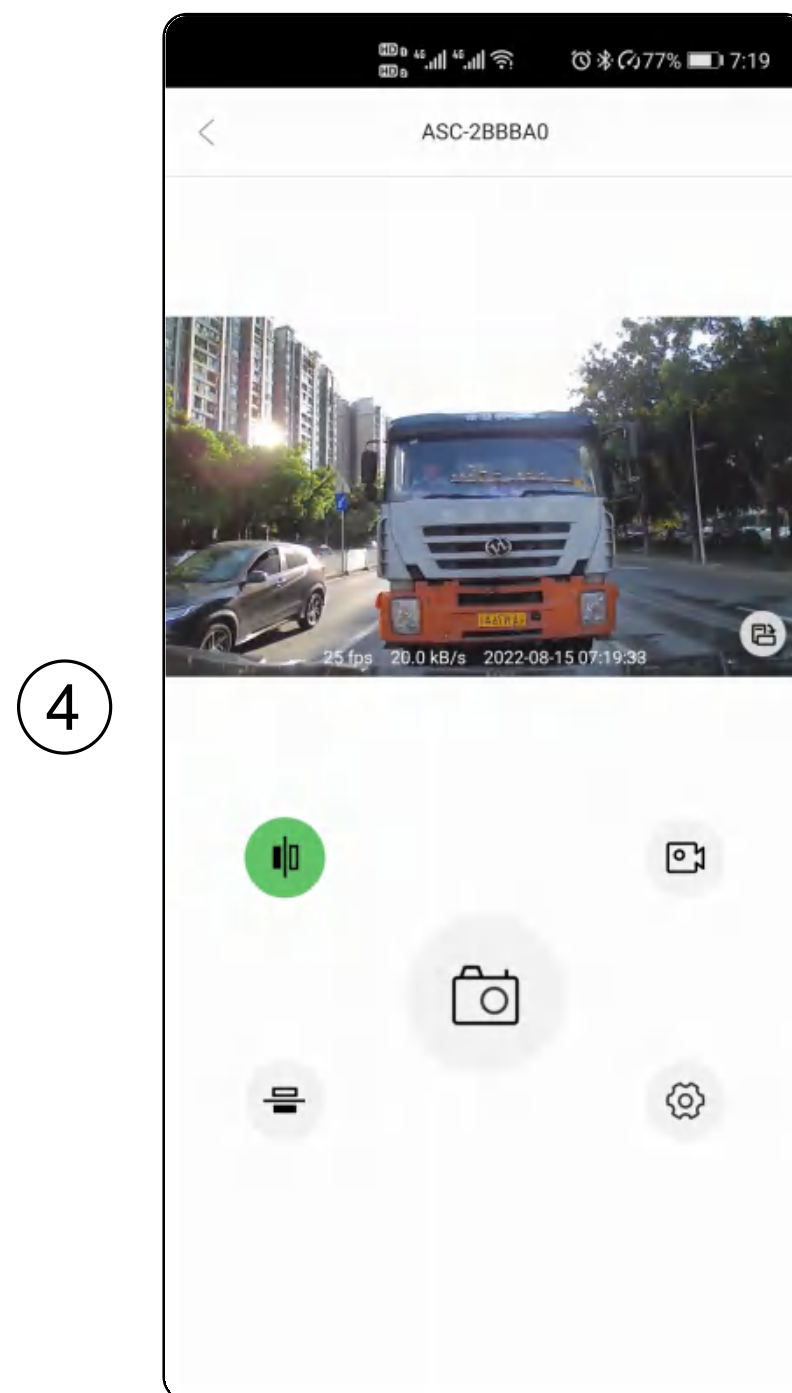
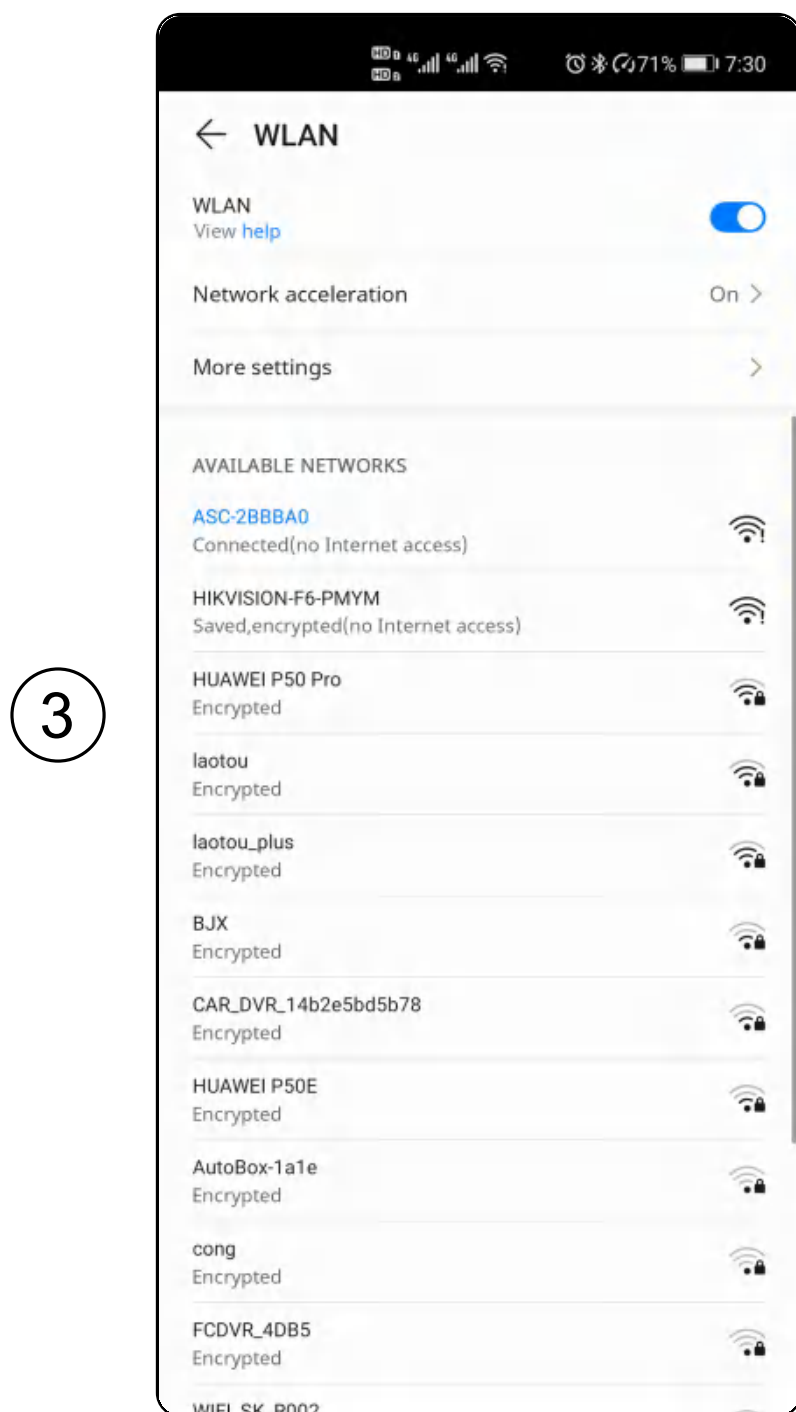
The hotspot name is "ASC-XXXXXX", and the default password is empty.

①



②

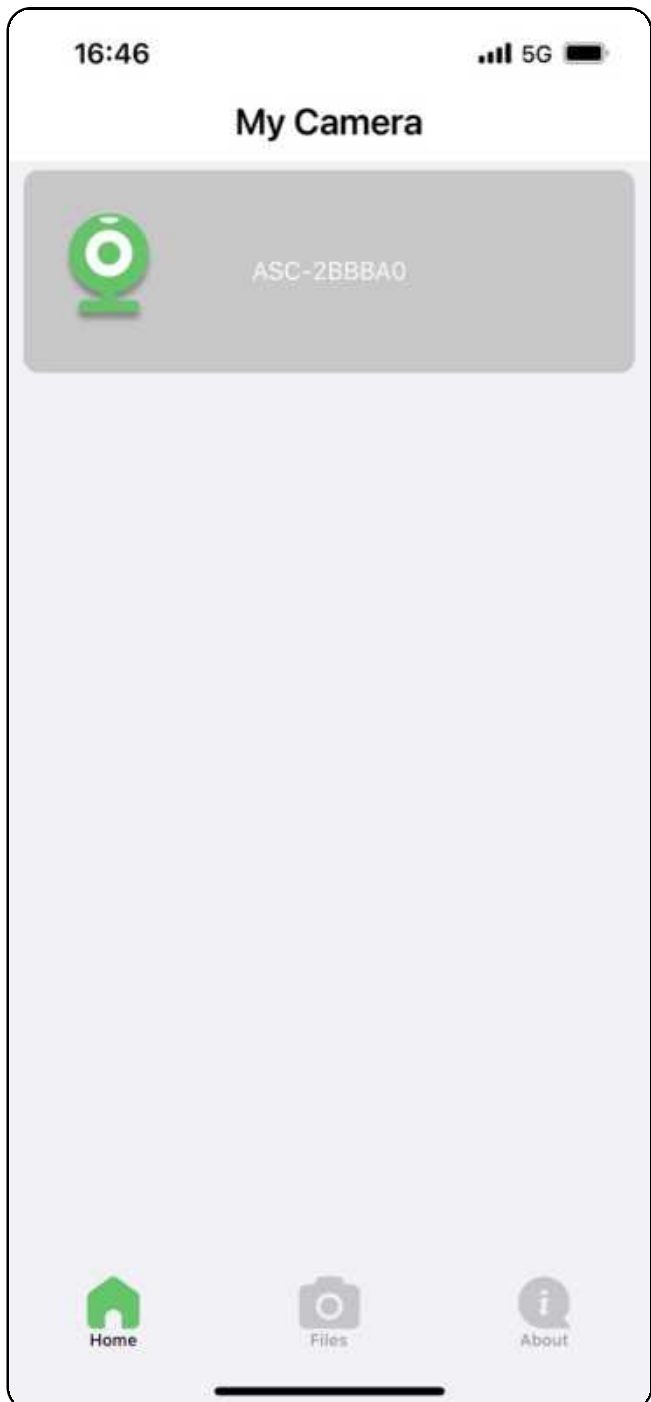
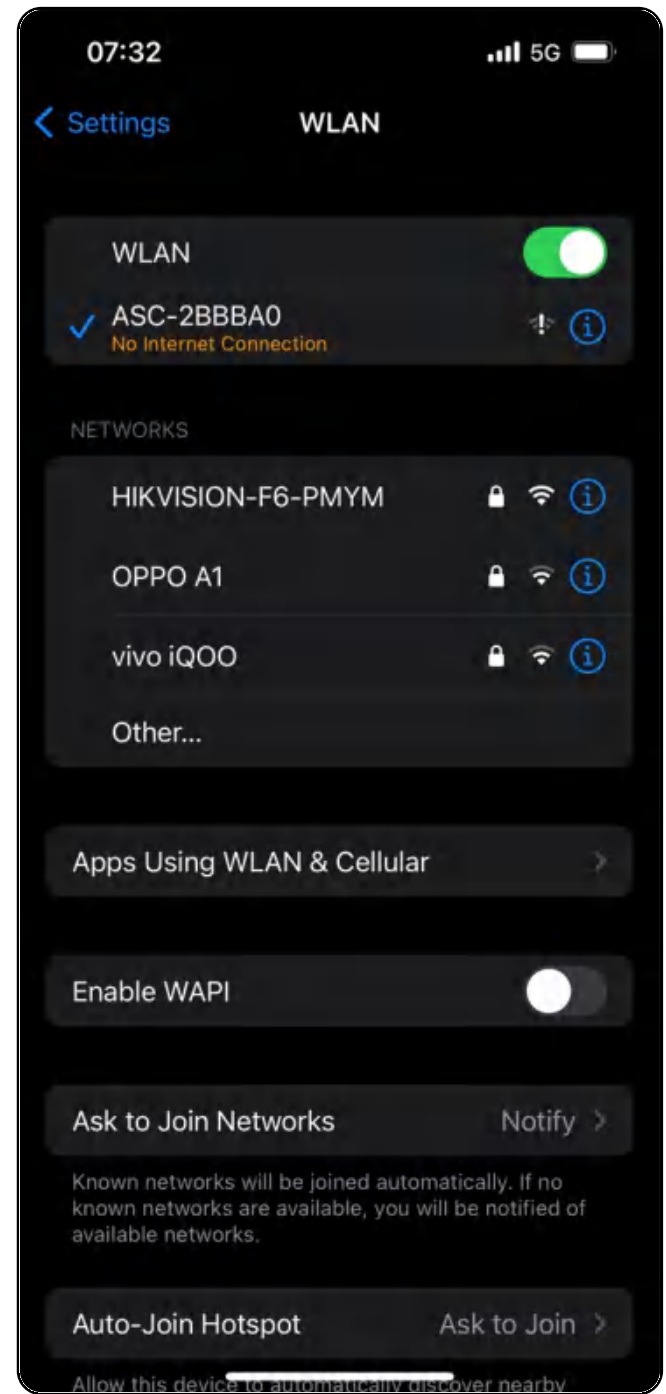
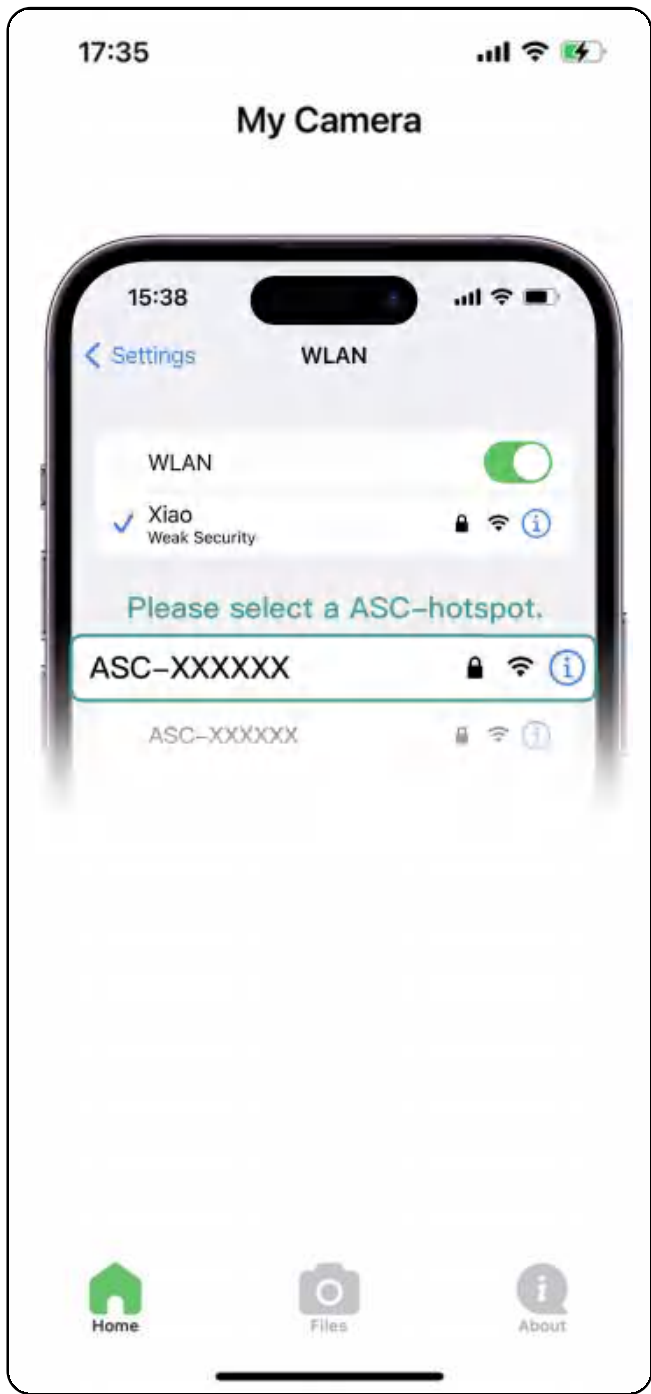




## Application - iOS

- ① Open the app, it would say “Please select a ASC- hotspot”.
- ② Please go to the system Wi-Fi page, and select the device to be connected.
- ③ Click the back button to return to the app. You will see the camera corresponding to the hotspot is listed on the view.
- ④ Click the camera and then the app will go to the live view page.

**i** A camera can only be connected to one mobile phone simultaneously.





## **Q1: The device cannot be connected?**

- (1) Firstly, please make sure that the device is power on.
- (2) If yes, please open the phone settings, refresh the Wi-Fi, find and connect it, (The hotspot name is: ASC-xxxxxx).
- (3) If there is no device hotspot in the Wi-Fi list, please make sure the location permission is granted. After authorization, you will be able to find and connect the device hotspot.
- (4) If the above methods don't work, please try to plug off and plug in the power cable.
- (5) If all the above methods don't work, please contact us.

## **Q2: When viewing the device, the screen suddenly goes black?**

- (1) You can check if the device is power on.
- (2) If the device is power on, please turn off the phone Wi-Fi, and turn it on again. At last you can try to reconnect the device.
- (3) If the above methods don't work, please try to plug off and plug in the power cable.
- (4) If all the above methods don't work, please contact us.

## **Q3: Can I share the device with another phone?**

No. Only one mobile phone can connect to one device simultaneously. If you need to replace the connected mobile phone, please disconnect the device and reconnect with another mobile phone.

## Q4: What phone permissions does the device need?

Location permission

Photo album permission

Bluetooth permission

Network permission

Microphone permission

## FCC warning

This device complies with part 15 of the FCC Rules. Operation is subject to the following two conditions:

- (1) This device may not cause harmful interference, and
- (2) this device must accept any interference received, including interference that may cause undesired operation.

Any changes or modifications not expressly approved by the party responsible for compliance could void the user's authority to operate the equipment.

This equipment has been tested and found to comply with the limits for a Class B digital device, pursuant to part 15 of the FCC Rules. These limits are designed to provide reasonable protection against harmful interference in a residential installation. This equipment generates, uses and can radiate radio frequency energy and, if not installed and used in accordance with the instructions, may cause harmful interference to radio communications.

However, there is no guarantee that interference will not occur in a particular installation. If this equipment does cause harmful interference to radio or television reception, which can be determined by turning the equipment off and on, the user is encouraged to try to correct the interference by one or more of the following measures:

- Reorient or relocate the receiving antenna.
- Increase the separation between the equipment and receiver.
- Connect the equipment into an outlet on a circuit different from that to which

## FCC warning

the receiver is connected.

-Consult the dealer or an experienced radio/TV technician for help.

### FCC Radiation Exposure Statement

This equipment complies with FCC radiation exposure limits set forth for an uncontrolled environment .

This transmitter must not be co-located or operating in conjunction with any other antenna or transmitter.

This equipment should be installed and operated with minimum distance 20cm between the radiator& your body.