

WIFI SMOKE AND CARBON MONOXIDE DETECTOR

Quick Reference Guide



Thank you for purchasing our intelligent wifi smoke and carbon monoxide combination alarm device. Please read this manual carefully to ensure proper use and store it in a safe place for future reference.

Product Specifications

Power: DC 2*1.5V AA Alkaline (LR6、MN1500)

Operation Current: <15uA (standby); <70mA (alarm)

Alarm Volume: >85 dB(A) at 3 meters

Smoke Sensitivity: 0.09 - 0.17 dB/m

CO sensitivity: 50ppm 60~90min

100ppm 10~40min

300ppm ≤3min

Low Battery: 2.6 ± 0.1 V

Silence Time: approx. 10 minutes

Wi-Fi connectivity: 802.11 b/g/n @2.4G

Comply to Standard 1: EN14604:2005/AC:2008 (for smoke detector)

Comply to Standard 2: EN50291:2010 (for carbon monoxide detector)

Packing List

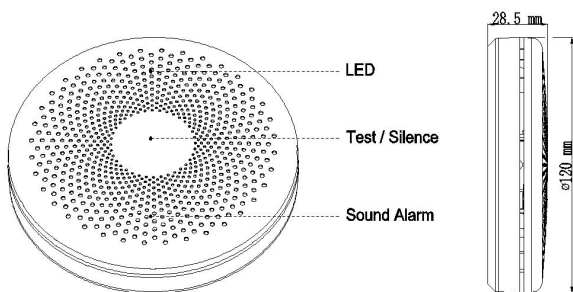
1 × smoke and carbon monoxide alarm

1 × Mounting bracket

1 × Screw Kit

1 × User manual

Product profile:



Installation Instructions

Where to install

1. At first you should install an alarm in the bedroom and walkway. If there are several bedrooms in the house, please install an alarm in every bedroom.
2. Install an alarm above the stairway and on every floor of the house.
3. Smoke, heat and burning things will spread horizontally after rising to the ceiling, so install the alarm in middle of the ceiling.
4. If the alarm can not be installed in the middle of the ceiling, install it keeping 300mm away from the corners . (see the figure 1).
5. If the alarm is installed in the wall, it should keep 100mm away from the ceiling.
6. If the length of the room or the hall is beyond 30 foot, you need to install several alarms there.
7. When the wall or ceiling is slanting, the alarm needs to be installed minimum 500mm away from the highest wall or ceiling point in the room (see the figure 2).

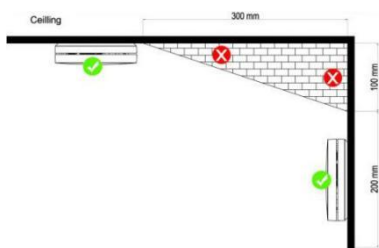


Figure 1

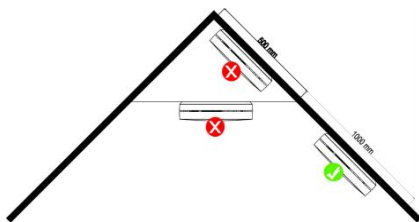
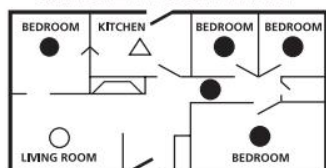


Figure 2

SINGLE FLOOR PLAN



- Smoke or Smoke/CO Alarms for Required Protection
- Smoke Alarms for Additional Protection
- △ Ionization Type Smoke Alarms with "Hush" Control or Photoelectric Type

MULTIPLE FLOOR PLAN

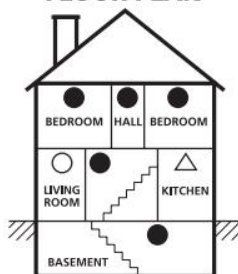


Figure 3

Locations to Avoid

1. High-humidity areas such as kitchens, and bathrooms;
2. Next to air outlets, fans and central heating;
3. Dusty, dirty areas or areas with insects;
4. High-temperature and easily polluted places;
5. Places with difficult access, making it difficult to operate the test function;
6. Within 1.5m from lamps;
7. Next to doors or windows;
8. In the top of rooms with sloping roofs, the corner of the room or other dead-air spaces.

Mounting Alarms

1. Twist off the mounting bracket from the alarm.
2. Put the bracket on the installation position and mark the screw holes on the ceiling or the wall.
3. Drill two mounting holes in the marked place by an electric drill (The diameter of the drill hole is 5mm) and insert two plastic anchor plugs by hammer.
4. Screw the mounting bracket to the ceiling or the wall (Refer to figure 3).
5. Attach the alarm to the mounting bracket and turn clockwise to lock the alarm
6. If you have any question on installation, please contact your retailer.



WARNING: The installation instructions must be followed strictly in case of any injury.

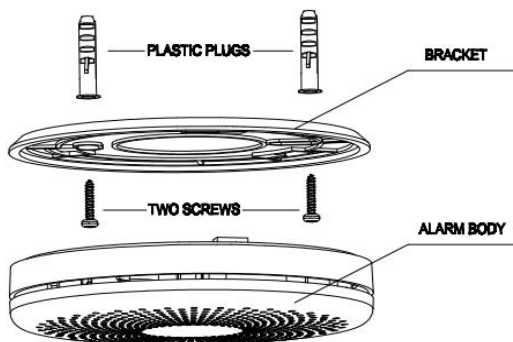


Figure 3

Test your Alarm

Test the unit to ensure proper operation by pressing the cover, the alarm will sound if the unit are working well. If no sounds, you can refer to “ Trouble shooting ” section for solution.



CAUTION:

1. DO NOT test your alarm using an open flame. This may damage the smoke alarm, or ignite combustible materials and start a structural fire.
2. DO NOT stand close to the alarm when the alarm is sounding. Exposure at close range may be harmful to your earring, so step away when testing.
3. Weekly Test: test this smoke alarm once a week.

LED and Buzzer Indicators

1. Normal status: Green LED Flashes once every 60 seconds.
2. Test status: Two sets of 3 long beeps with Red LED flashes and two sets of 4 quick beeps with Red LED flashes.
3. Smoke alarm: Red LED flashes 4 times synchronized with 4 long beeps
4. Carbon monoxide alarm: Red LED flashes 3 times synchronized with 3 short beeps
5. Hush/Silence mode: Red LED flashes once every 8 seconds.
6. Low Battery status: Red LED flashes once every 60 seconds and 1 beep every 60 seconds.
7. Fault status: the alarm will deliver beeps every 40 seconds.

Silence Mode

During the unit is alarming, you can push the test button, it will be paused the unit alarming for approx 10 minutes. The red LED will flash once every 8 seconds, it indicates the smoke alarm device is running into the silence mode. The silence feature is to be used only when a known alarm condition, such as smoke from cooking activates the alarm. The smoke alarm device will automatically reset after approximately 10 minutes, if after this period, particles of combustion are still present, the alarm will sound again.



CAUTION:

Before using the alarm silence (silence), identify the source of the smoke and be certain a safe condition exists.

Maintenance and Cleaning

There are a few simple steps you need do to keep it working properly.

- 1、 Test the alarm once a week.
 - 2、 Clean the alarm surface with a soft brush or cloth every month.
 - 3、 Do not paint the alarm. Paint will seal the vents and interfere with the sensor's ability to detect smoke.
 - 4、 Never attempt to disassemble the alarm to clean inside. This will
- In addition to weekly testing, the alarm requires periodic cleaning to remove dust, dirt, and debris.

Clean the alarm at least once a month to remove dust, dirt, or debris.

Use a vacuum cleaner with the soft brush, vacuum all sides and covers of smoke alarm device.

If there is a defective battery or other failures, you can refer to "Trouble shooting" for solution, if there are still failures during warranty, you can return to your retailer.

IMPORTANT: Do not attempt to remove the cover to clean inside. This will void warranty.

Replaced Battery:

1. The low battery signal can last for maximum 30 days, please replace the batteries in time to keep it working properly.
2. Battery required: standard 1.5V AA alkaline batteries. Recommended battery brand: DURACELL(MN1500,Ultra/Plus) ,Energizer(E91),Golden Peak,GP, etc; if use low quality battery, it may cause the alarm work false or reduce service life
3. Correctly install the positive and negative poles of the battery (+ & -)

Trouble Shooting

| Problem | Method of disposal |
|--|--|
| The alarm does not sound when testing | Please check whether the batteries be well assembled according to the Guide required |
| Red LED flashes and the alarm delivers one beep every 60 seconds | The battery is low. Please replace the batteries as soon as possible. |
| The alarm delivers one beep every 40 seconds | 1.clean the alarm. Please refer to the "maintenance and cleaning" section. 2.the alarm is malfunctioning. Contact the retailer to replace it. |
| Nuisance alarms triggered intermittently or when residents are cooking, taking showers, etc. | 1.press silence button. 2.clean the alarm. Please refer to the "maintenance and cleaning" section. 3.move the alarm to new location. |
| The alarm does not triggered when other alarm be triggered | 1.check the device if be interlinked. 2. check the distance between the interlinked alarms out of max allowed distance |

WiFi function description:

This product uses a low power consumption module with built-in Wi-Fi connectivity solution designed by Hangzhou Tuya Technology Corporation, which can connect the product to the Tuya cloud platform. When the product detected a fire happen, it can automatically push the fire alarm information to 'Tuya Smart APP', reminds users to protect your lives and property.

Preparation for use

Download and open the app

Search for "Tuya Smart" or "Smart Life " in the application market or scan the QR code on the outer packaging/instructions to download and install the App.

For the first download and use, please click the "register" button to register an account, if you already have an account, click the "login" button.

Make sure your AP routine is working normally.and your phone is connected to the Wi-Fi network in the 2.4GHz band;



Tuya Smart APP



Smart Life APP

Network access settings

Open the "Tuya Smart" or "Smart Home" App, select the "Smart Home" page, and click the "+Add Device" button;

On the device addition page, click the "Scan" button in the upper right

corner to scan the QR code below;

Follow the instruction step by step to complete the pairing process.



You can choose to pair the network by manual operation at next step:

Pairing process(EZ Mode):

Step1: Open the APP enter into "My Home" ,click "Add Device" ;

Step2: Select "Security & Sensor",and select "Alarm (Wi-Fi)";

Step3: Power on the device, **Quickly press the button four times** until the LED indicator light rapidly blinks.Confirm and Click"Next"

Step4: Wait for the device to configure automatically.The pairing process is within 3 minutes ;

Step5: After the configuration is successful, the indicator light stops blinking, and the APP jumps to "Added successfully". Click "Done" to finish the pairing process.

IF failed to pairing the alarm, please try again or choose the **AP Mode** to try it.

Warranty Information

Purchase each new smoke and carbon monoxide alarm device to be free from defects in material and workmanship under normal use and service for a period of 2 years from the date of purchase. During the specified warranty period, we will repair or replace, at its discretion any defective Alarms that are returned to the retailer. Please include your name, address and phone number along with a brief description of what is wrong with the unit. Damage from neglect, abuse or failure to adhere to any of the enclosed instructions will result in termination of the warranty, and the unit will not be replaced or repaired.

This warranty shall not apply to the alarm if it has been damaged, modified, abused or altered after the date of purchase or if it fails to operate due to improper maintenance.

The Manufacturer shall have no liability for any personal injury, property damage or any special, incidental, contingent or consequential damage of any kind resulting from gas leakage, smoke, fire or explosion.

Warning:

Changes or modifications to this unit not expressly approved by the party responsible for compliance could void the user's authority to operate the equipment.

NOTE:

This device complies with part 15 of the FCC Rules. Operation is subject to the following two conditions: (1) This device may not cause harmful interference, and (2) this device must accept any interference received, including interference

that may cause undesired operation.

FCC Statement:

This equipment has been tested and found to comply with the limits for a Class B digital device, pursuant to part 15 of the FCC Rules. These limits are designed to provide reasonable protection against harmful interference in a residential installation. This equipment generates, uses and can radiate radio frequency energy and, if not installed and used in accordance with the instructions, may cause harmful interference to radio communications. However, there is no guarantee that interference will not occur in a particular installation. If this equipment does cause harmful interference to radio or television reception, which can be determined by turning the equipment off and on, the user is encouraged to try to correct the interference by one or more of the following measures:

- Reorient or relocate the receiving antenna.
- Increase the separation between the equipment and receiver.
- Connect the equipment into an outlet on a circuit different from that to which the receiver is connected.
- Consult the dealer or an experienced radio/TV technician for help.

The equipment complies with FCC Radiation exposure limit set forth for uncontrolled environment. This equipment should be installed and operated with minimum distance 20cm between the radiator and your body.