



深圳市金航标电子有限公司

SHENZHEN KINGHELM ELECTRONIC TECHNOLOGY CO.,LTD.

# 承认书

## SPECIFICATION FOR APPROVAL

客户名称	Shanghai Cross Stars Cultural Technology LLC., Co.
客户型号	U 9 0 0 4
安创料号	
客户料号	SG00703_P002-VC_1
版本	A1
产品类型	FPC(IPEX1) ANTENNA

	制造商签名 MANUFACTURER SIGNATURE	客户签名 CUSTOMER SIGNATURE
设计 Designed by		
审核 Checked by		
核准 Approved by		
日期 Date		

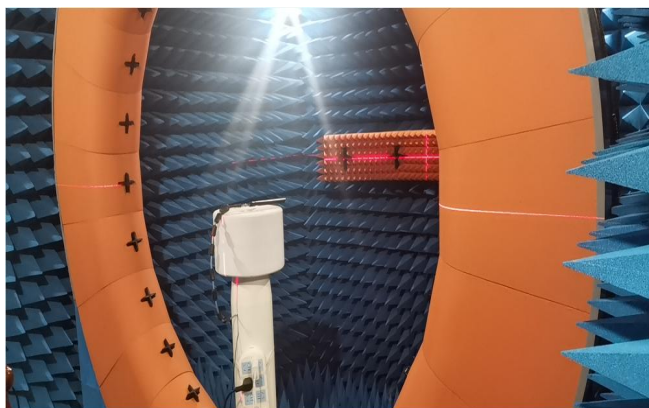


## *Contents*

<i>Item</i>	<i>Description</i>
1、	cover
2、	Resume form
3、	Table of Contents
4-5、	Microwave darkroom test system
6-7	Test Report

## 1、Antenna test equipment

### 1.1 Test instrument for interior diagram of dark room entity



21Technical parameters of electrical appliances

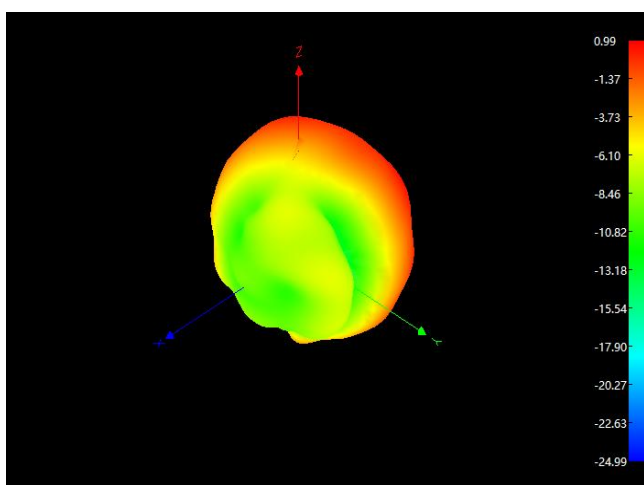
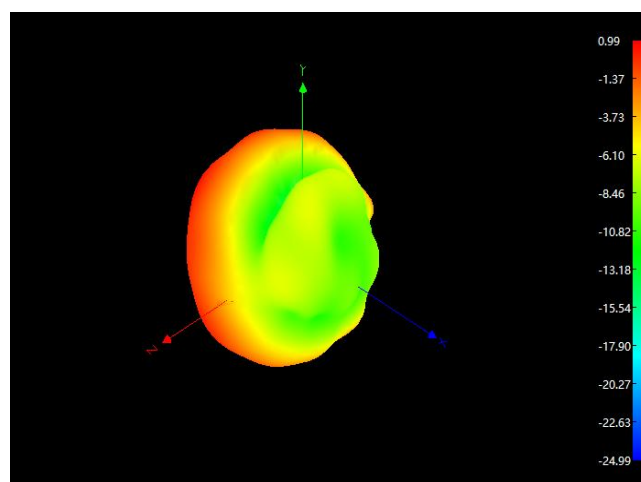
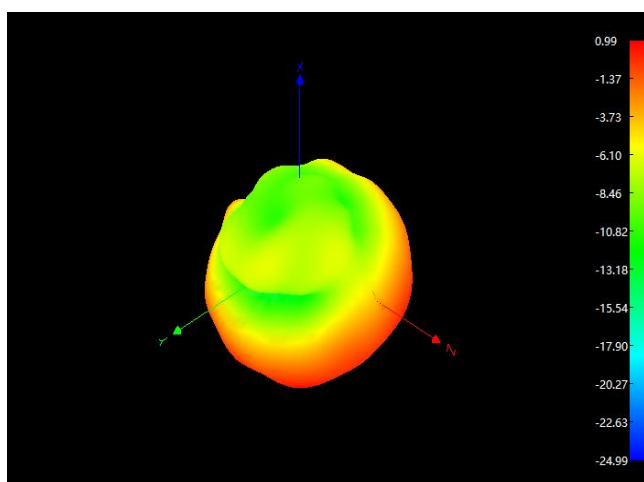
电性能指标		Electrical Specifications	
频率范围	2400-2500MHZ 5150-5850MHz	Frequency Range	2400-2500MHZ 5150-5850MHz
电压驻波比	≤2.0	VSWR	≤2.0
输入阻抗	50 Ω	Input Impedance	50 Ω
增益	≤1.5dbi ≤2.12dbi	Gain	≤1.5dbi ≤2.12dbi
最大功率	1W	Admitted POver	1W
极化方式	垂直极化	Polarizatiaon	Linear Vertical
方向性	全向性	Radiation	Omni-directional
发射损耗	≤-6 db	Re Turn Loss	≤-6 db

### 3. Passive testing / 无源测试

#### 3.1 Efficiency&Gain / 效率&增益

Frequency / MHz	Efficiency / dB	Efficiency / %	Gain / dBi
2400	-3.64	43.25	1.50
2450	-3.62	43.45	1.37
2500	-3.7	42.66	1.09

#### 3.2 Radiation Pattern / 辐射方向图



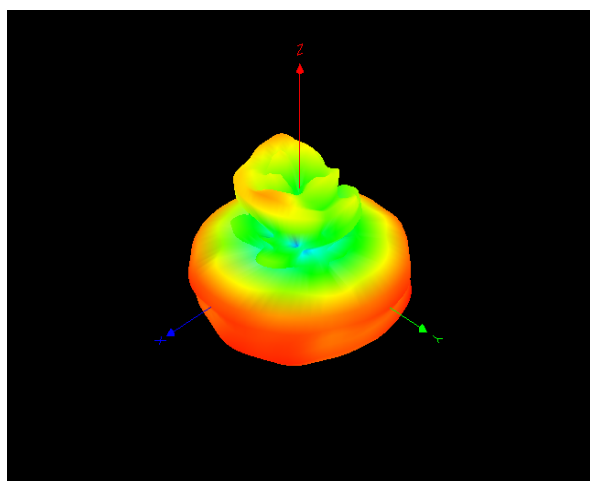
# 深圳市金航标电子有限公司

SHENZHEN KINGHELM ELECTRONIC TECHNOLOGY CO.,LTD.

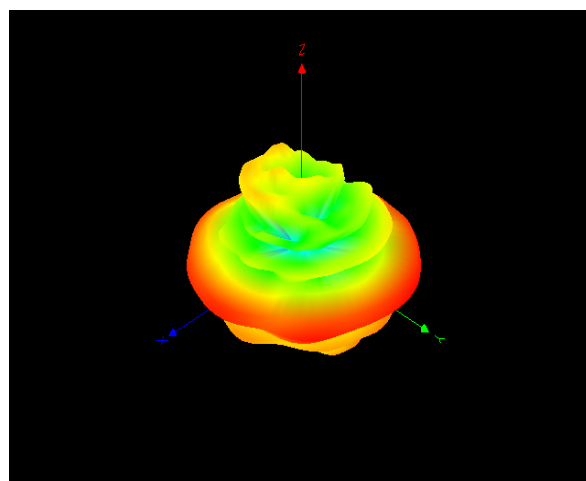
---

Freq (MHz)	Effi (%)	Gain (dBi)
5150	74.53	2.12
5550	69.62	1.95
5850	73.12	1.75

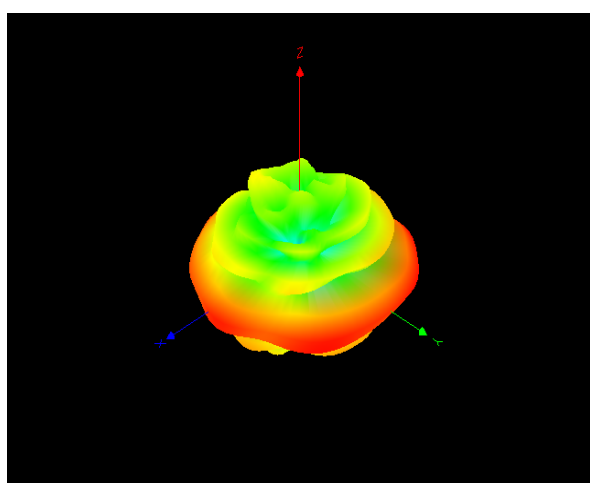
5150MHz



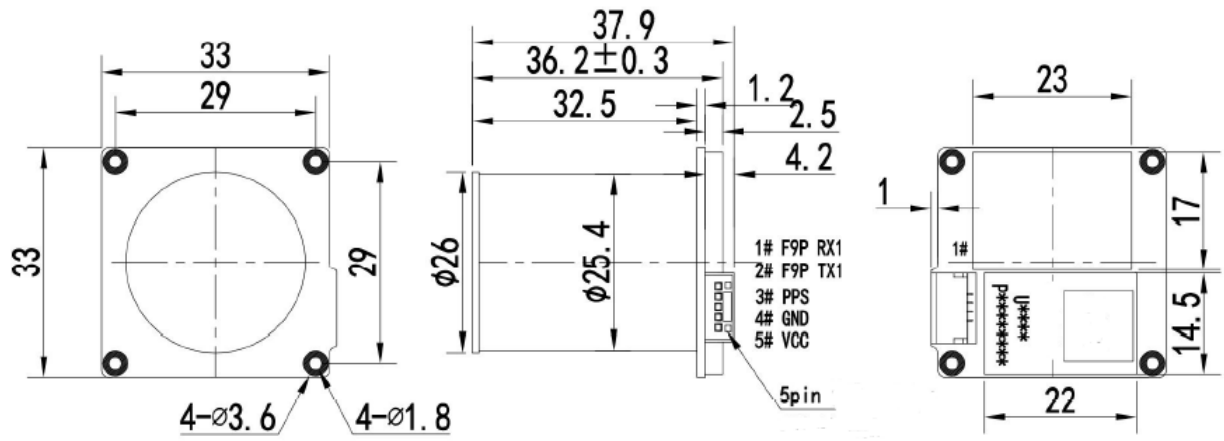
5550MHz



5850MHz



Product picture



Length \* width: 0.8\*30 mm