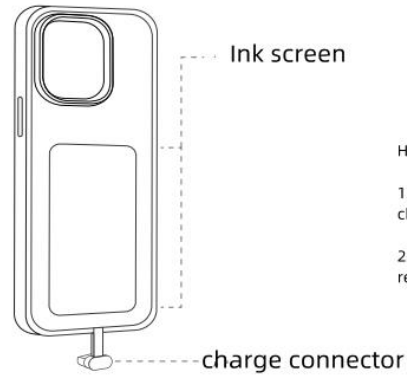


7 INKZONE

Smart phone case use guide

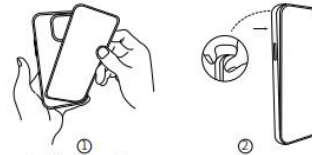
product information

Packing list: Smart phone case, use guide



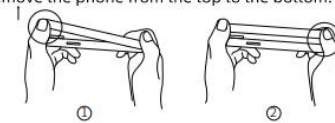
Installation and Removal

How to install: Put the phone in the bottom of the case first, Press the inside of the housing gradually from bottom to top.



How to disassemble:

1. Before removing the phone case, check to make sure that the tail plug is unplugged;
2. Push out the phone from the camera and gradually remove the phone from the top to the bottom. .



Equipment pairing and use

Party official account, according to the prompts to download the APP. I

INKZONE Ink Space J Officer



Step 2: Install the smart phone case on the phone and plug it in interface.

Step 3: Log in and register for APP use.

Step 4: Open the INKZONE APP home page and click "My Devices"

Connect the phone case. Find the number and add the corresponding phone case, you can connect Success.



common problem

DY creation; Start over
Step 5: Click "Start Your Creation"
Study, picture and background, create
Generate your own theme.



Step 6: After creating the picture, click the "Use" button to upload it synchronously Can phone case.

Q: Smartphone cases -- don't plug them in?

A: No, the smartphone case is synced through a Bluetooth connection, only when

The transmission requires a small amount of power and doesn't drain the phone's battery the rest of the time.

Q: What if the smartphone case doesn't connect?

A: Because smart phone cases use Bluetooth protocol and plug transmission, it might

If it is affected by some uncertain factors, reinsert the port and connect it

Solve it.

Q: Having trouble syncing new pictures to your smartphone case?

A: Please close and open the APP again, and reconnect the Bluetooth to the interface.

Q: Does the smartphone case need to be plugged -- straight into the body of the phone?

A: The plug of a smartphone case only needs to be plugged in for synchronous transmission,

The remaining time can be determined according to personal habits.

Q: Do smartphone cases heat up?

Warranty Regulations

Dear users, hello!

Thank you for your favorable purchase of INKZONE series products. For your protection Please read the following warranty regulations in detail:

I. Service Commitment:

The unit sales of a series of products to the user commitment: the normal use of this product

In the process, such as due to design, manufacturing, materials, technology, etc

Quality problems, - free annual warranty. The date of service commencement refers to the date of purchase

The period shall prevail.

ii. Precautions:

Under the following circumstances, you will not be able to provide free maintenance service, and you will have to pay the corresponding fee

Enjoy INKZONE's official repair service:

* Products out of warranty period or abnormal maintenance certificate (including no valid purchase

Purchase voucher, voucher content and product physical identification is inconsistent or painted

Changed);

Disassembly, repair and modification without official permission and authorization (including

Hardware or

* Failure to operate according to the instruction manual resulting in abnormal function;

* Accidental or human causes (including flooding, cracking, breaking and damage Energy devices burn out, etc.), resulting in product failure or damage;

* Due to force majeure (such as earthquake, fire, lightning, voltage instability, etc. Caused by product failure or damage.

Dear users,

Please fill in this card at the time of purchase and keep it properly

In case of failure, please take the card to the designated place for warranty service.

Name of customer		contact number	
product name		purchasing date	
serial number			
contact address			

FCC Caution.

This device complies with part 15 of the FCC Rules. Operation is subject to the following two conditions:

(1) This device may not cause harmful interference, and

(2) this device must accept any interference received, including interference that may cause undesired operation.

Any Changes or modifications not expressly approved by the party responsible for compliance could void the user's authority to operate the equipment.

Note: This equipment has been tested and found to comply with the limits for a Class B digital device, pursuant to part 15 of the FCC Rules. These limits are designed to provide reasonable protection against harmful interference in a residential installation. This equipment generates uses and can radiate radio frequency energy and, if not installed and used in accordance with the instructions, may cause harmful interference to radio communications.

However, there is no guarantee that interference will not occur in a particular installationIf this equipment does cause

harmful interference to radio or television reception, which can be determined by turning the equipment off and on,

the user is encouraged to try to correct the interference by one or more of the following measures:

-Reorient or relocate the receiving antenna.

-Increase the separation between the equipment and receiver.

-Connect the equipment into an outlet on a circuit different from that to which the receiver is connected.

-Consult the dealer or an experienced radio/TV technician for help.

RF warning for Portable device:

The device has been evaluated to meet general RF exposure requirement. The device can be used in portable exposure condition without restriction.