

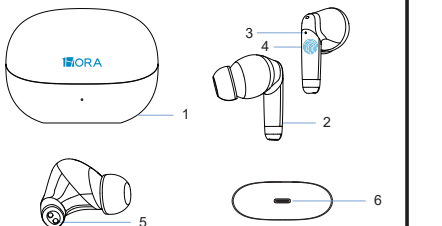
# HORA

## AUT207 WIRELESS EARBUDS



### USER MANUAL

#### Product Overview

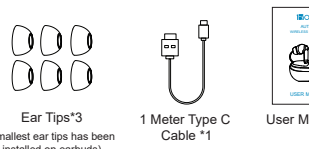
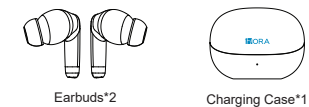


- 1. Charging Case
- 2. Earbuds
- 3. Earbuds Indicator Light
- 4. Touch Button
- 5. Charging Interface
- 6. Type C Charging Port

#### Customer Service

E-mail: support\_mx@1hora.com  
USA: support\_us@1hora.com  
Website: www.1hora.com

#### Packing List



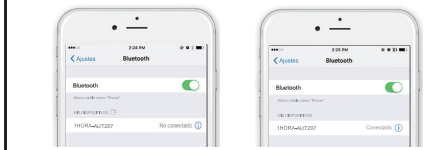
Ear Tips\*3  
(Smallest ear tips has been installed on earbuds)

1 Meter Type C Cable \*1

User Manual\*1

#### Pairing

1. Open the charging case and remove the earbuds. The earbuds will automatically turn on and pair with each other. The earphone's indicator will blink red and white alternately, indicating that it is ready to be paired.
2. Turn on the Bluetooth on your phone, search for "1HORA-AUT207," and select it. The earbuds will successfully connect to your phone and you will receive a prompt saying "connected."



#### Charging Instructions

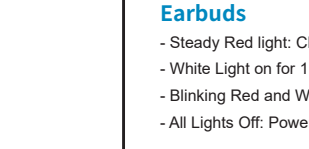


**Earbuds Charging:**  
Place the earbuds into the charging case. The red indicator light on the earbuds will stay on and turn off when fully charged.

#### Charging the Case:

1. When the battery of the charging case is low, the indicator light on the charging case will flash for 5 seconds and then turn off.
2. Connect the charging case to a computer with Type-C charging cable (included), and the indicator light will flash. The indicator light will stay on when the charging case is fully charged.

#### LED Indicator



- Earbuds**
- Steady Red light: Charging in progress
  - White Light on for 1 Second: Power on
  - Blinking Red and White Lights: On Pairing
  - All Lights Off: Power off or connected to phone
- Charging Case**
- Blinking White Light: Charging in progress
  - Steady White Light: Charging case fully charged
  - Blinking White Light for 5 seconds: Low battery reminder

#### Phone Calls Control

- Answer/End Call:**  
Tap once on the right (R) or left (L) earbud.
- Reject Call:**  
Press and hold the right (R) or left (L) earbud for 1.5 seconds.

#### Music Control

- Play/Pause:**  
Tap once on the left (L) earbud.
- Next Track:**  
Tap once on the right (R) earbud.

#### Voice Assistant

**Activate Siri:**  
Press and hold the right (R) or left (L) earbud for 1.5 seconds (while music is paused).

#### Frequently Asked Questions (FAQs)

**Connectivity Issues:**  
**If the earphones are not connecting or pairing with your smartphone or computer:**

1. Try to place the earbuds in the charging case and wait for 1 minute before reopening it to reset.
2. Ensure that the Bluetooth function on the device is enabled and that the earbuds are within 1 meter range of the device.
3. If the issue persists, try restarting the device's Bluetooth or unpairing and re-pairing the earbuds.

#### Frequently Asked Questions (FAQs)

**No Sound Issues:**  
**If your headphones have no sound, you can try the following troubleshooting steps:**

1. Check Bluetooth connection: Ensure that the Bluetooth earbuds have successfully paired with the audio device. A failed connection may result in no sound.
2. Check the volume settings: Ensure that the volume settings are properly adjusted. If the volume is set too low or muted, there will be no sound.
3. Test with another device: Connect the headphones to a different audio device to see if the issue persists. This will help determine if the problem is with the headphones or the original audio device.
4. Try a different audio source: Test the headphones with a different audio source, such as a different song or video, to rule out any issues with the specific media file.
5. Clean the earbuds jack: If there is debris or dirt in the earbuds jack, it may interfere with the audio connection. Use a clean cloth or compressed air to remove any obstructions.

#### Safety Instructions:

1. When using this product while walking, pay attention to your surroundings to avoid causing or being involved in traffic accidents.
2. Before use, please turn the volume to the lowest level to prevent sudden loud noises from damaging your hearing. Do not turn the volume up too high to protect your ears.
3. If this product falls into flammable or liquids, such as water, please stop using it immediately to prevent fire, malfunction, or electric shock.
4. Do not attempt to disassemble the product to avoid malfunction or electric shock. We cannot guarantee its performance if the internals have been manually modified.
5. Do not touch the charging port with wet hands when charging to avoid electric shock.
6. If you feel uncomfortable while using this product, please stop using it immediately.
7. If you are using medical device such as a pacemaker, please consult your doctor before using this product.
8. Keep this product out of reach of children and do not allow them to use it.

#### Warranty Statement

We provide a 3-month warranty service for this product, but the following situations are not covered by the warranty.

1. Warranty period has expired.
2. Warranty card has been altered and does not match the product code and body.
3. Malfunction or damage caused by misuse, abuse, improper transportation, use, maintenance or storage.
4. Malfunction or damage caused by force majeure (such as earthquakes, wars, fires, etc.) or accidents.
5. Damage to zippers or buckles due to excessive force.
6. Stitching or tearing caused by overloading.
7. Damage caused by any sharp object.
8. Products with signs of burning or water immersion.
9. Damage caused by unauthorized disassembly or modification.
10. Aging, discoloration, wear and tear, cracking, and other wear and tear that occur during normal use of the product.
11. If the original identification label of the product is changed or damaged, this warranty will be void.

Completeness and appearance of the product and accompanying materials are not covered by the warranty. Please inspect and raise objections on the spot when receiving the product.

#### FCC warning:

This device complies with part 15 of the FCC Rules. Operation is subject to the following two conditions: (1) This device may not cause harmful interference, and (2) this device must accept any interference received, including interference that may cause undesired operation.

#### FCC warning:

Any Changes or modifications not expressly approved by the party responsible for compliance could void the user's authority to operate the equipment.

Note: This equipment has been tested and found to comply with the limits for a Class B digital device, pursuant to part 15 of the FCC Rules. These limits are designed to provide reasonable protection against harmful interference in a residential installation. This equipment generates uses and can radiate radio frequency energy and, if not installed and used in accordance with the instructions, may cause harmful interference to radio communications. However, there is no guarantee that interference will not occur in a particular installation. If this equipment does cause harmful interference to radio or television reception, which can be determined by turning the equipment off and on, the user is encouraged to try to correct the interference by one or more of the following measures:

- Reorient or relocate the receiving antenna.
- Increase the separation between the equipment and receiver.
- Connect the equipment into an outlet on a circuit different from that to which the receiver is connected.
- Consult the dealer or an experienced radio/TV technician for help.

The device has been evaluated to meet general RF exposure requirement. The device can be used in portable exposure condition without restriction.