



Indicator light

Touch button

Microphone

Type C charging port

Instruction manual

Charging cable (1 meter)

- (1) Do not try to disassemble or replace any parts in the product except for the operation methods specially marked in the manual.
- (2) Do not submerge the product in water or any other liquid as it is not designed to be waterproof.
- (3) If any liquid accidentally enters the product, please disconnect and remove the product immediately.
- (4) To avoid electric shock, ensure that your hands are dry when installing or uninstalling the product.

(5) Do not place the product near a heat source or expose it directly to fire.

(6) Do not place the product in an environment with a strong electromagnetic force as it may cause damage to the product.

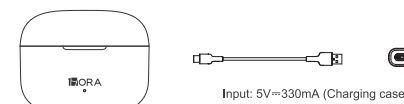
MODEL:AUT206
Connection Distance: 10M approx.
Battery Capacity: 3.7V 40mAh
Earphones Duration: 6H approx.
Charging Time: 1.5H approx.
FCC ID :2A9HV-AUT206

Battery Capacity: 3.7V 300mAh
Charging Time: 1.5H approx.
Rated Input: 5V=330mA
(All technical information is subject to actual performance)

This device complies with part 15 of the FCC Rules. Operation is subject to the following two conditions:

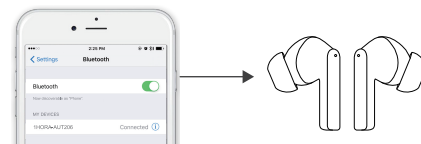
- (1) This device may not cause harmful interference, and
- (2) this device must accept any interference received, including interference that may cause undesired operation.

Charging Status: Flashing green light
Charging Completed: Steady green light
When the charging case is low in power, white light flashes
please charge in time.



Charging Case	Put the earbuds into charging case to automatically charge the earbuds	Pairing Status: Red & white lights flashing alternately Connected Status: Light turns off Charging Status: Red light stays on Charging Completed: Red light turns off Low Battery Status: Red light flashes
Using Type-C charging cable	Using Type-C charging cable connected to a 5V charger to automatically charge the earbuds	Charging: Green light flashing Charging Completed: Green light stays on Charging Case Charging for Earbuds: White light stays on until fully charged, then turns off

- **Power On**
Earbuds automatically turn on when taken out of the charging case.
- **Power Off**
Method 1: Put earbuds back into the charging case to automatically turn off.
Method 2: Press and hold the touch button for 10 seconds to turn off.
- **Pairing**
Take the earbuds out of the charging case and they will automatically enter Bluetooth pairing mode. Select and connect to the earbuds' name "1HORA-AUT206" from your device's Bluetooth list.



(L) x 1

(R) x 1

Play/Pause: Click the touch button on the left earphone (L) for once

Next Song: Click the touch button on the right earphone (R) for once

(L) or (R) for 2 seconds

(L) or (R) for 2 seconds

Voice Assistant: Longpress (L) or (R) for 2 seconds to activate (Siri)

- Left/Right Earphone Operation

Answer Call: Click (L) or (R) for once

End Call: Click (L) or (R) for once
Reject Call: Long-press (L) or (R) for 2 seconds

We provide a 3-month warranty service for this product, but the following situations are not covered by the warranty.

1. Warranty period has expired.
2. Warranty card has been altered and does not match the product code and body.
3. Malfunction or damage caused by misuse, abuse, improper transportation, use, maintenance or storage.
4. Malfunction or damage caused by force majeure (such as earthquakes, wars, fires, etc.) or accidents.
5. Damage to zippers or buckles due to excessive force.
6. Stitching or tearing caused by overloading.
7. Damage caused by any sharp object.
8. Products with signs of burning or water immersion.
9. Damage caused by unauthorized disassembly or modification.
10. Aging, discoloration, wear and tear, cracking, and other wear and tear that occur during normal use of the product.

- 11.If the original identification label of the product is changed or damaged, this warranty will be void.
Completeness and appearance of the product and accompanying materials are not covered by the warranty. Please inspect and raise objections on the spot when receiving the product.

FCC Warning

This device complies with part 15 of the FCC Rules. Operation is subject to the following two conditions: (1) This device may not cause harmful interference, and (2) it must accept any interference received, including interference that may cause undesired operation.

Certain modifications not expressly approved by the party responsible for compliance could void the user's authority to operate the equipment.

This device has been tested and found to comply with the limits for a Class B digital device, pursuant to part 15 of the FCC rules. These limits are designed to provide reasonable protection against harmful interference to other licensed devices. However, there is no guarantee that interference will not occur if you use this equipment. To reduce the risk of interference to other devices, you are encouraged to take the following measures:

- Increase the separation between the equipment and receiver;
- Connect the equipment into an outlet on a circuit from which other electronic loads do not draw power;
- Consult the dealer or an experienced radio/TV technician for help.

The device has been evaluated to meet general RF exposure requirements. The device can be used in portable operating condition without restriction.