



Shenzhen Yingfeng Antenna
Technology Co., Ltd.

Business headphones Test Report

client	Xin intelligent
product	Business headphones
engineer	Simon
telephone	18118726256
mailbox	lyg@yingfengtianxian.com
date	2022-11-08



Shenzhen Yingfeng Antenna Technology Co., Ltd.

Report director

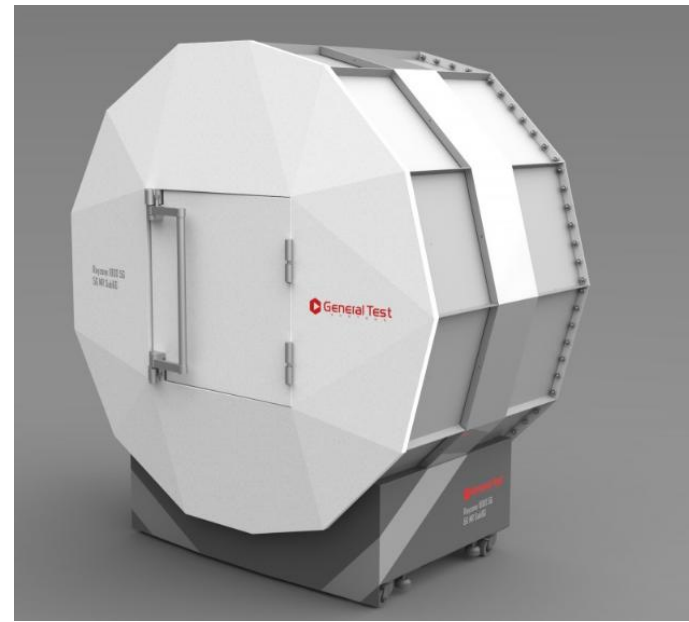
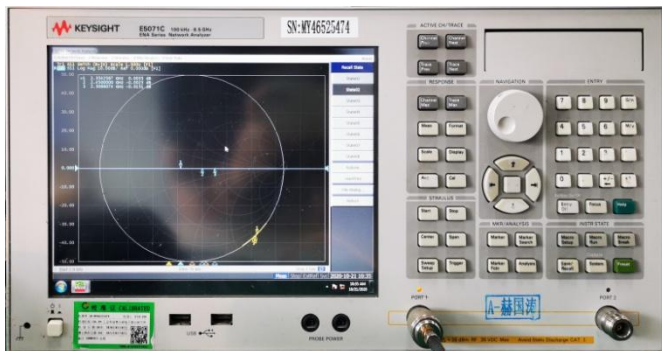
- test condition
- Appearance of prototype
- Matching parameters
- Sub-debugging antenna Sparameters of network
- Measurement of antenna efficiency pattern in micro wave darkroom
- Test OTA active data in microwave darkroom
- Distance test
- Commissioning summary



Shenzhen Yingfeng Antenna Technology Co., Ltd.

test condition

- 1. S parameter measurement
- 2. Equipment: network analyzer (Agilent E5062A), Microwave dark room, MT8852B
- 3. Items: impedance, return loss,, VSWR, Efficiency, gain, radiation pattern, sensitivity, power, Frequency offset active data TRP TIS





Shenzhen Yingfeng Antenna Technology
Co., Ltd.

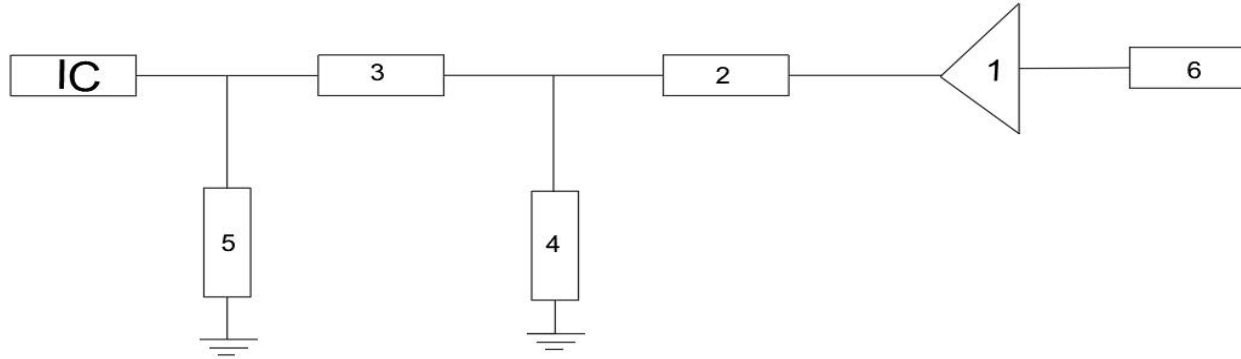
Appearance of prot





Shenzhen Yingfeng Antenna Technology Co., Ltd.

Matching parameters



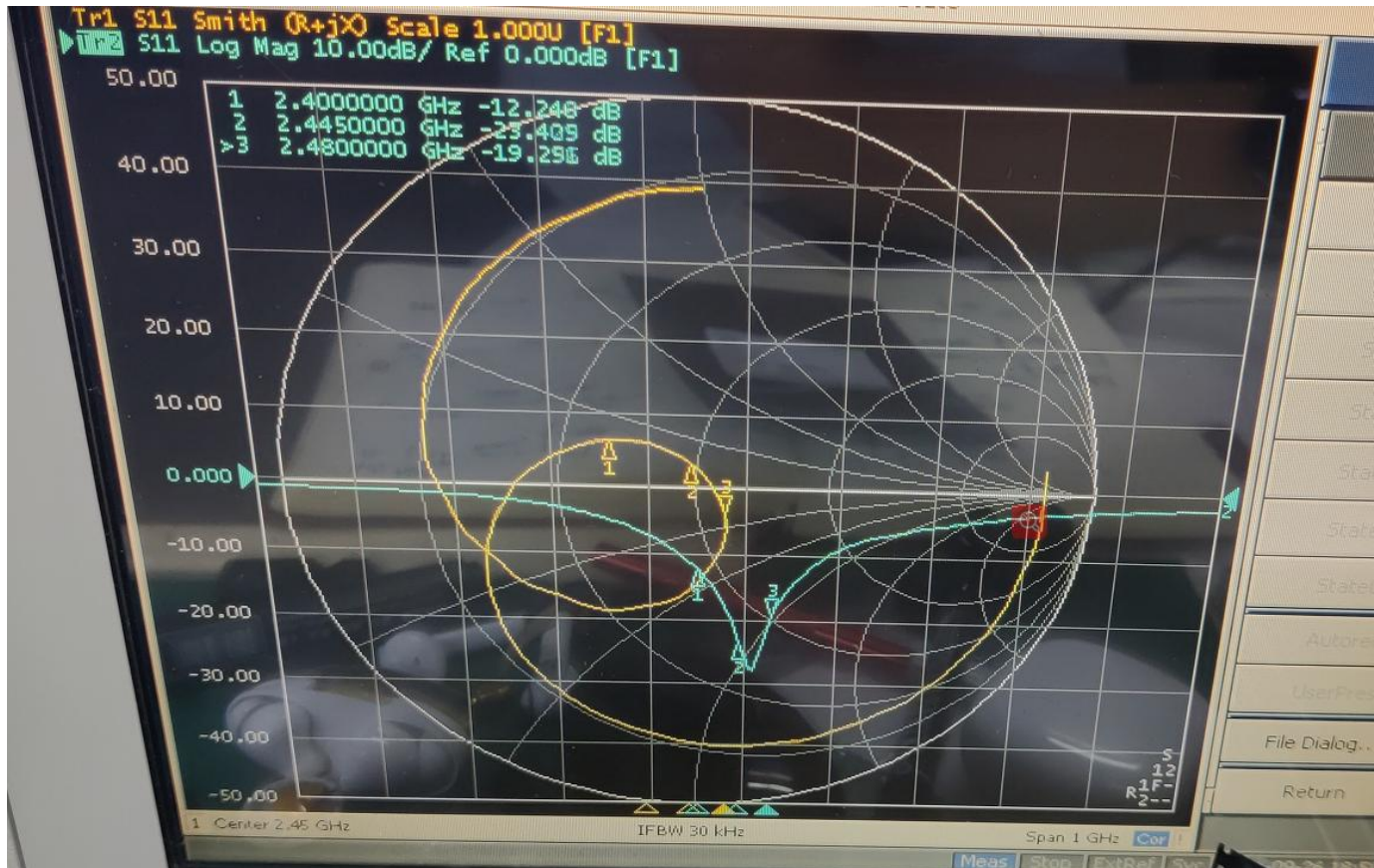
number	model	specifications	manufacturer	material code	tolerance	
1	YF2012-A20	2012	Yingfeng			
2	filter	0Ω/0201	Yingfeng			
3	<u>inductance</u>	2.4NH/0201	Murata		±0.1NH	
4	NC					
5	NC					
6	electric capacity	2.0PF/0201	Murata		±0.1PF	



Shenzhen Yingfeng Antenna Technology Co., Ltd.

Sub-debugging antenna S parameters of network

Debugging waveform





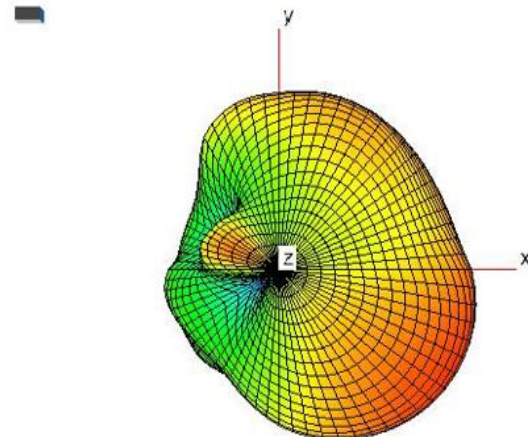
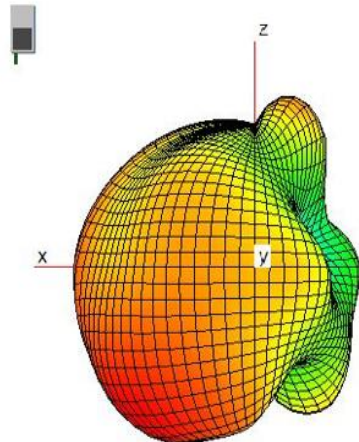
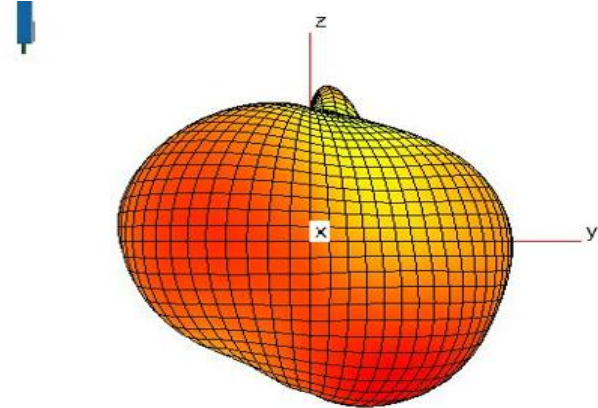
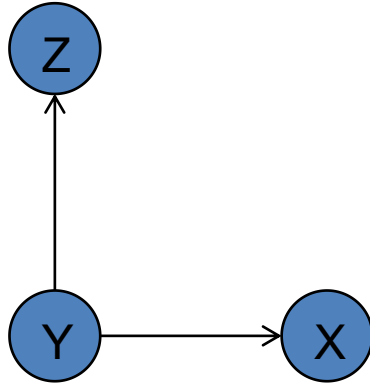
Measurement of antenna efficiency pattern in microwave darkroom

Freq (MHz)	Gain (dB)	Efficiency (dB)	Efficiency (%)
2400	-0.15608343	-5.04114148	31.32462294
2410	0.216433803	-4.766830176	33.36698625
2420	0.746445549	-4.378473822	36.48821497
2430	0.864105705	-4.194930601	38.06334399
2440	1.265711409	-3.823290806	41.46397361
2450	1.468520617	-3.397443714	45.73573139
2460	1.63322007	-3.396101017	45.74987358
2470	1.91379542	-3.124849067	48.69844493
2480	1.955495666	-2.977737617	50.37629671
2490	2.102508127	-2.913667159	51.12499566
2500	1.894302116	-3.036939774	49.69423651
2510	1.591823288	-3.252763048	47.28503287
2520	1.521970949	-3.267839501	47.12116834
2530	1.514262485	-3.411462872	45.58833309
2540	1.333488124	-3.607561387	43.57564873
2550	1.124573058	-3.875496156	40.9685303



Measurement of antenna efficiency pattern in microwave darkroom

Field
pattern





Whole machine OTA data

	Channel	TRPpower (dBm)	TIS sensitivity (dBm)
	CH 0	4.502804938	-84.77889926
	CH 39	4.282253222	-84.428929911
	CH 78	5.064630692	-84.991189539



Distance test

a. Environment/mobile phone

test item	Test distance			Pocket test requirements (please describe the test distance of the following items)		remarks
Orion's belt S6	6m	low	<input type="checkbox"/>	Right front	OK	
	8	middle	<input checked="" type="checkbox"/>	left anterior	OK	
				Right after	OK	
10m	tall	<input type="checkbox"/>	left rear	OK		



Shenzhen Yingfeng Antenna
Technology Co., Ltd.

Thanks for Your Attention