




APPROVAL SHEET

CUSTOMER NAME 客户名称	Shenzhen PUJIRI Technology Co., Ltd.	
CUSTOMER P/N 客户料号		
PART NAME 品名	433 MHz FPCBuilt-in antenna (Applicable to bell 15s models)	
P/ N 料号	YJC-6N030-B09	
APPROVAL REV. 版次	A0	
DELIVERY DATE 送样日期	2021.05.21	
PREPARED BY 承办		
CHECKED BY 审核		
APPROVED BY 核准		
Customer Approved 客户承认		
Prepared By 承办	Checked By 审核	Approved By 核准
<i>Jerry</i>	<i>Steven</i>	<i>Alex</i>

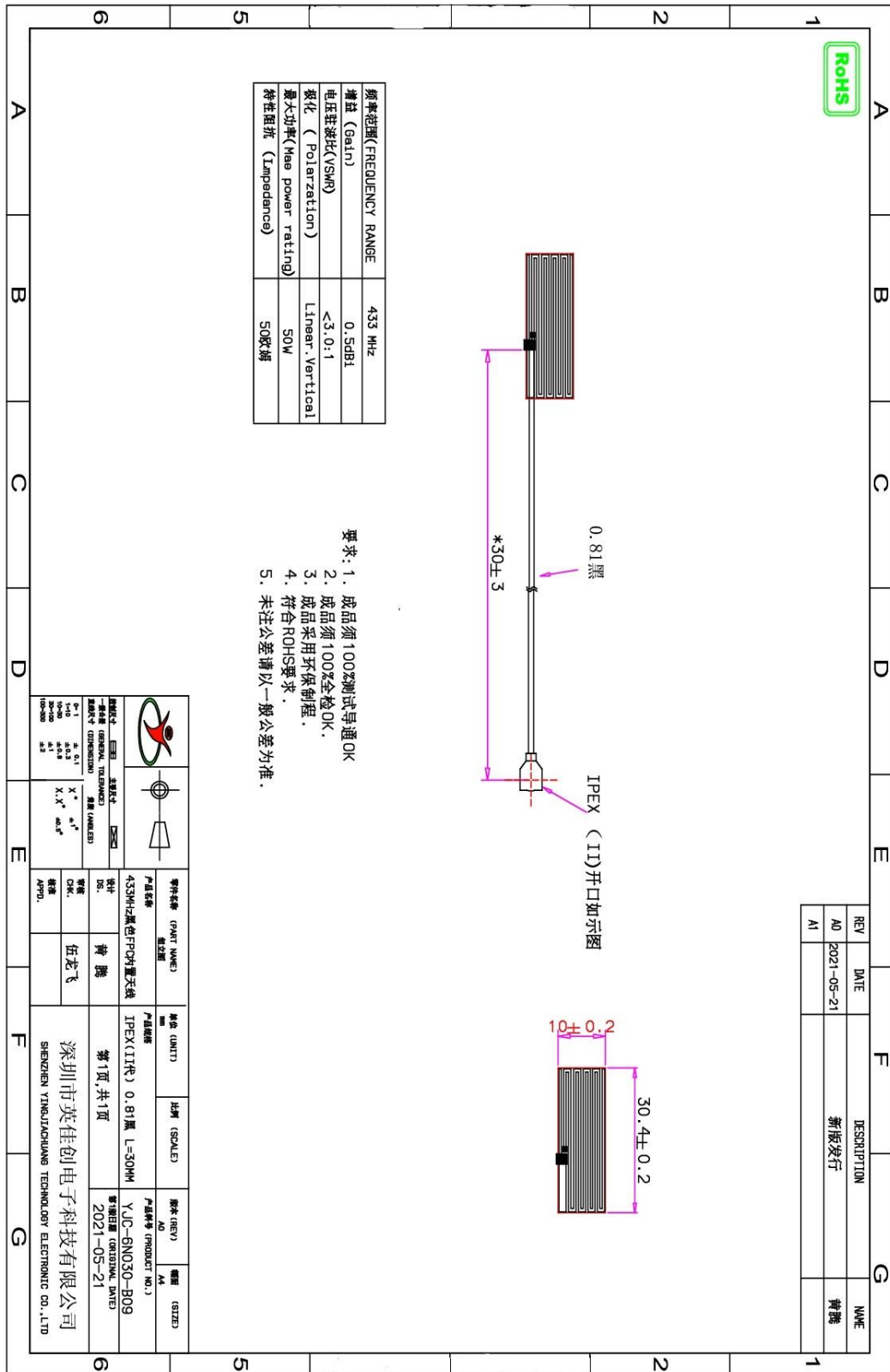


Directory

1、	cover
2、	directory2
3、	Revise your resume3
4、	Antenna plan4
5、	Antenna technical parameters5
6、	Environmental performance test5
7、	Antenna and attached location map6
8、	Antenna performance test diagram6
9、	2D、 3D Test data7-8



Antenna plan:





Antenna technical parameters and environmental testing:

Electrical technical parameters			
Electrical signifier		Electrical Specifications	
Range of frequency	433 MHz	Frequency Range	433 MHz
Voltage standing wave ratio	<3.0	VSWR	<3.0
Impedance of input	50 Ω	Input Impedance	50 Ω
direction of	全向	Direction	All
gain	0.44dBi	Gain	044 dBi
Mechanical Specifications		Mechanical Specifications	
Antenna Color	BLACK	Antenna Color	BLACK
Input connector	IPEX(II)	Input connector	IPEX(II)
Cable length	30mm	Cable length	30 mm
Working Temperature	-20°C~+70°C	Working Temperature	-20°C~+70°C
Working Humidity	20~80%	Working Humidity	20~80%

Environmental performance test

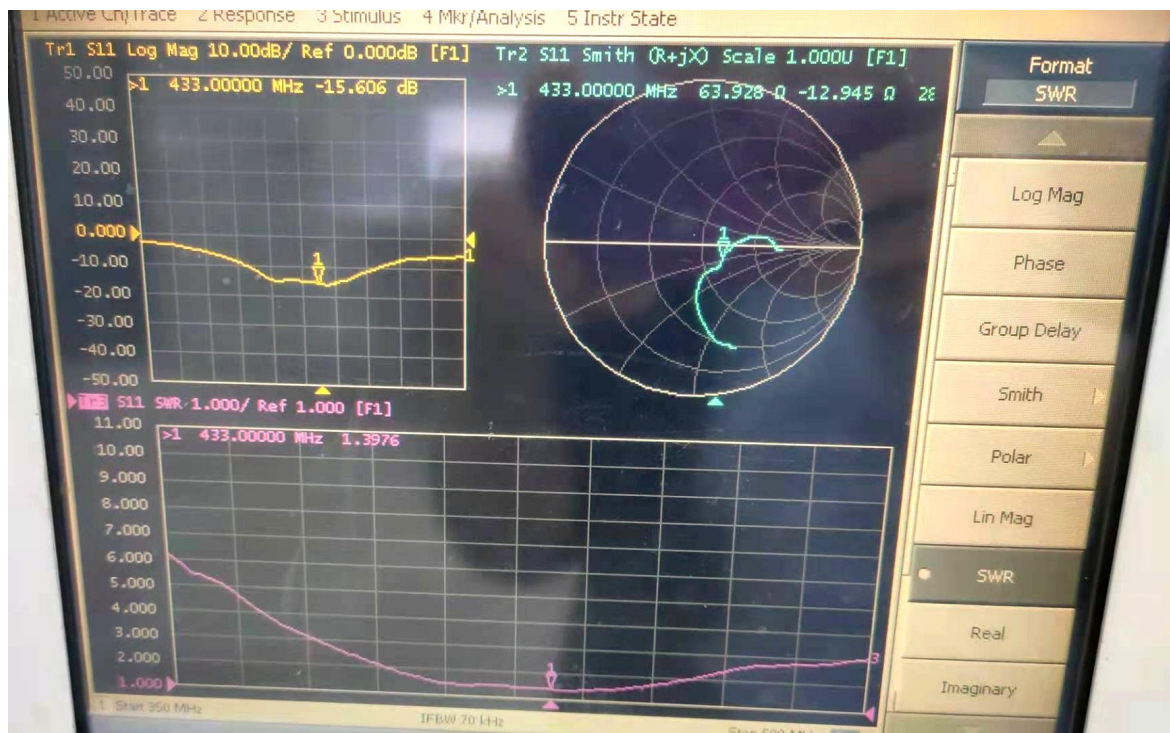
project	测试条件	规格
Storage environment	Test temperature, humidity, and air pressure without specifying the following: 1. The temperature ranges from -20°C to +70°C	Electrical and mechanical properties are normal
High and low temperature test	Check the appearance quality after five cycles between 70°C and -20°C, and then 1-2H under normal conditions.	The dimensions shall meet the requirements and shall meet the mechanical and electrical properties
Constant resistance Wet heat test	The relative humidity was $95 \pm 3\%$, and the test temperature was 40°C.	he dimensions shall meet the requirements and shall meet the mechanical and electrical properties
Vibration test	Vibration frequency range 10-55HZ, displacement amplitude: 0.35MM, acceleration amplitude: 50.0M/S, frequency sweep cycle: 30 times	Electrical and mechanical properties are normal
Drop off test	1M altitude in accordance with the vertical axis of the direction of free fall three times	



The antenna is attached to the location map



Antenna performance test diagram:



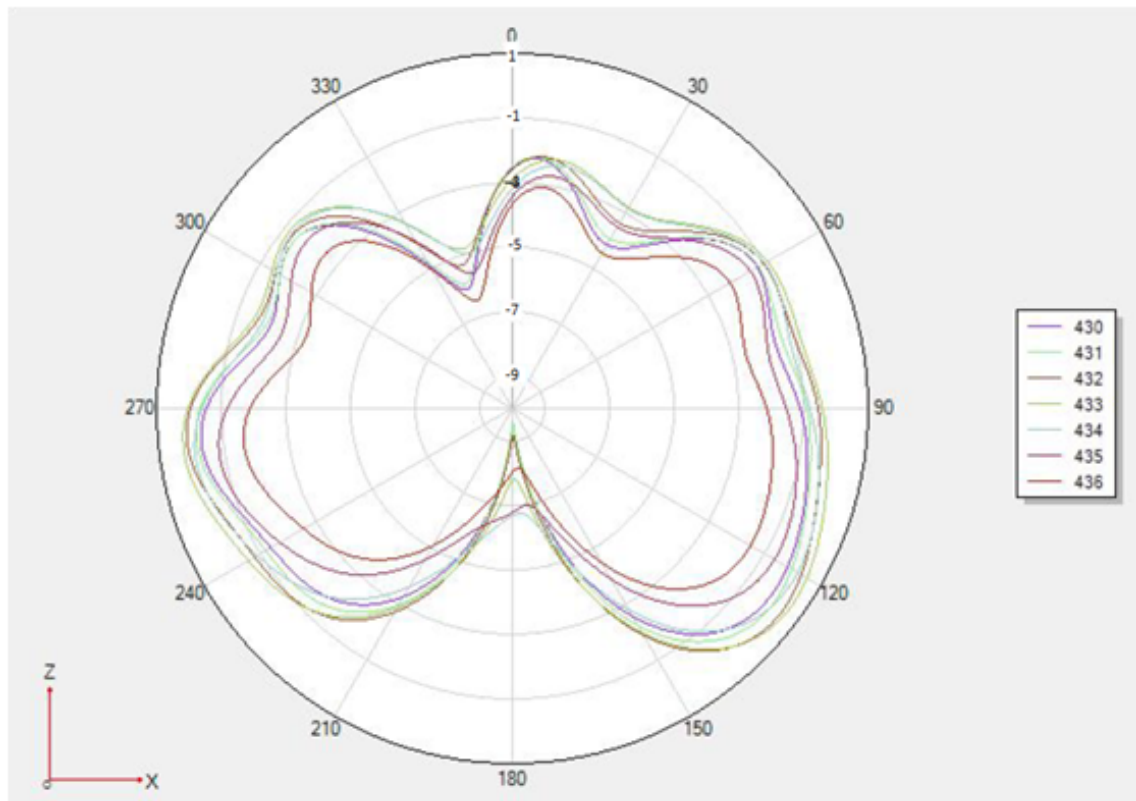


2D.3D Test data

(433MHz Test data)

Frequency	Efficiency (%)	Gain. (dBi)
430MHz	40.76	0.29
431MHz	41.70	0.38
432MHz	44.04	0.42
433MHz	45.40	0.44
434MHz	43.04	0.43
435MHz	38.05	-0.91
436MHz	33.66	-2.45

(Phi 0 2D)





3D Test diagram
(3D433MHz)

