

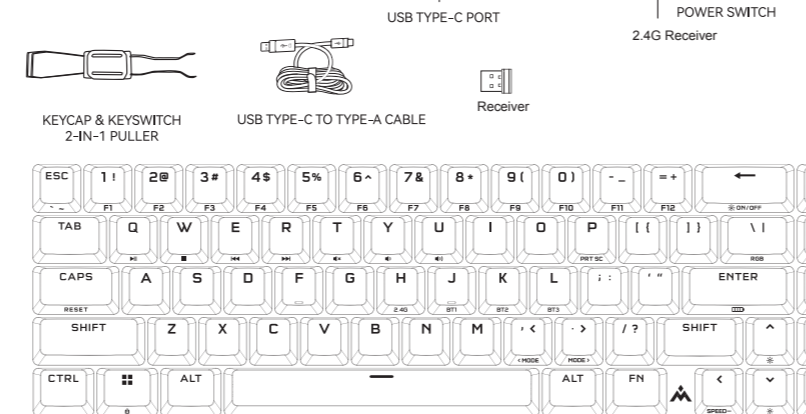
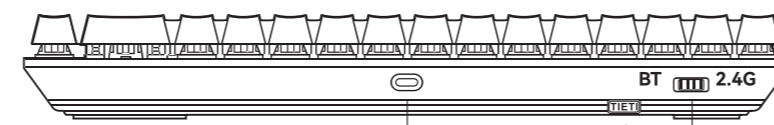


QUICK START GUIDE

B-2 SPIRIT MINI

65% RGB WIRELESS MECHANICAL GAMING KEYBOARD

TIETI B-2 Spirit Mini Wireless GETTING TO KNOW YOUR KEYBOARD



BEFORE FIRST USE

Charge the keyboard fully before first use by connecting the USB cable to the keyboard USB Type-C port.

CHARGING & BATTERY LIFE

The keyboard will indicate charging status when connected with PC.

INDICATOR	INDICATION	STATUS
Left CTRL key	Breathing White	Charging
	Solid White	Fully Charged
	Flashing White	Low Charge

Using the check battery life shortcut below, an indication will play to denote current battery charge level

SHORTCUT	FUNCTION	INDICATION	STATUS
FN + Enter	Check Battery Charge Level	Key "1" Solid Red	10% charged
		Key "1" & "2" Solid Red	20% charged
		Key "1" & "2" & "3" Solid Red	30% charged
		Key "1" & "2" & "3" & "4" Solid Yellow	40% charged
		Key "1" & "2" & "3" & "4" & "5" Solid Yellow	50% charged
		Key "1" & "2" & "3" & "4" & "5" & "6" Solid Yellow	60% charged
		Key "1" & "2" & "3" & "4" & "5" & "6" & "7" Solid Yellow	70% charged
		Key "1" & "2" & "3" & "4" & "5" & "6" & "7" & "8" Solid Green	80% charged
		Key "1" & "2" & "3" & "4" & "5" & "6" & "7" & "8" & "9" Solid Green	90% charged
		Key "1" & "2" & "3" & "4" & "5" & "6" & "7" & "8" & "9" & "0" Solid Green	100% charged

RESET TO FACTORY DEFAULTS

Press and Hold the key "FN" and "CAPS" together for 3 seconds then release, the keyboard will be reset to factory default settings.

CONNECTING VIA 2.4G WIRELESS

- Plug in the 2.4G receiver to PC USB port
- Slide the keyboard power switch button to the 2.4G position
- The keyboard will connect to PC automatically.

Note 1: If the nano wireless adaptor lost pairing with PC, or an unused nano wireless adaptor need be connected, repeat the above step 1 and 2, press and hold key "FN" and "H" together for at least 3 seconds, key "H" will start quick flashing green, after successfully paired, it will turn to solid green for 3 seconds then off.

Note 2: If key "H" keeps flashing green for 1 minute but still not paired, the keyboard will go to sleep mode and flashing will be off. You need enter a random key to wake up the keyboard, then retry the steps listed in Note 1.

CONNECTING VIA BLUETOOTH WIRELESS

- Initiate Bluetooth pairing on the host device such as PC or phone
- Slide the keyboard power switch button to the BT position
- Press and hold "FN" and "J" or "K" or "L" for at least 3 seconds, key "J" or "K" or "L" will start quick flashing green, after successfully paired, it will turn to solid green for 3 seconds then off.

Note : If key "J" or "K" or "L" keeps flashing green for 1 minute but still not paired, the keyboard will go to sleep mode and flashing will be off. You need enter a random key to wake up the keyboard, then retry the above steps.

SHORTCUT	Function
FN + H	2.4G wireless pairing, hold for 3 seconds
FN + J	BT 1 connection, hold for 3 seconds
FN + K	BT 2 connection, hold for 3 seconds
FN + L	BT 3 connection, hold for 3 seconds

CONNECTING VIA USB CABLE

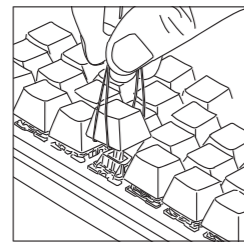
- Connect the keyboard via USB cable to a USB Type-A port on PC
- The keyboard will automatically switch to USB wired mode.

SOFTWARE MODE

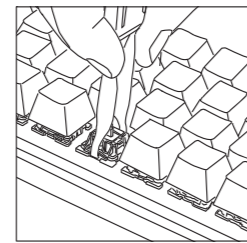
Welcome to visit TIETI's website www.tieti-tech.com/download and download the software TIETI Synapse for installation, you can control everything of the keyboard from lighting to powerful macros.

SWAPPING KEYSWITCHES

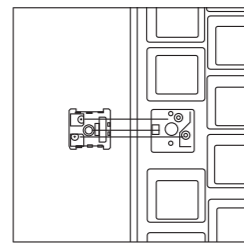
The keyswitches can be removed and replaced with any variety or combination of CHERRY MX RGB mechanical keyswitches. Other third party mechanical keyswitches with 3-pin design may be compatible, but are not guaranteed to work due to physical differences.



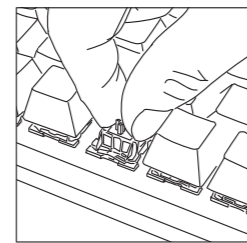
1. Push the side for keycap of the 2-IN-1 PULLER over the keycap, then lift to remove



2. Position the tips of the keyswitch puller under the keyswitch top and bottom tabs, then press in and lift to remove



3. Align the new keyswitch's pins and base with the sockets and opening.



4. Carefully press the keyswitch in until it clicks into place. If you feel any resistance, remove and try again.

PROFILE & LOCK FUNCTIONS

SHORTCUT	FUNCTION	ON-KEY INDICATION
FN +	Windows Lock	Solid White (When ON)
FN + Page Up	Scroll Lock	Solid White (When ON)
CAPS	Caps Lock	CAPS Solid White (When ON)

LIGHTING SETTING

SHORTCUT	FUNCTION
FN + Backspace	ON/OFF backlighting
FN + arrow down	Adjusts backlighting brightness in 25% decrements
FN + arrow up	Adjusts backlighting brightness in 25% increments
FN + arrow left	Slow down backlighting
FN + arrow right	Speed up backlighting
FN + \	Shift RGB lighting mode (Sequence: Rainbow, Red, Orange, Yellow, Green, Cyan, Blue, Purple, White)
FN + <	Shift RGB lighting mode (from end to start)
FN + >	Shift RGB lighting mode (from start to end)

Total 22 modes are available as below, including the last 3 modes which are provided in software mode.

- Static color
- Dynamic Breathing
- Color Shift
- Rainbow Wave
- Rainbow Ripple
- Stars Twinkling
- Streaming
- Type Lighting
- Flapping
- Sine Waving
- Surging
- Blooming
- Lasing
- Color Waterfall
- Inclined Rain
- Raining
- Streaming line
- Type pulsing
19. Customization mode
20. Music mode (EDM)
21. Music mode (Classic)
22. Soft White

Audio and Media

SHORTCUT	FN+Q	FN+W	FN+E	FN+R	FN+T	FN+Y	FN+U
FUNCTION	Play/Pause	Stop	Last track	Next track	Mute	Increase Volume	Decrease Volume

Full-size Keyboard Keys

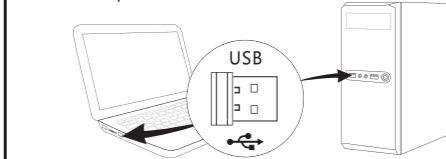
SHORTCUT	FUNCTION
FN+ESC	\ /
FN+SHIFT+ESC	~
FN+1	F1
FN+2	F2
FN+3	F3
FN+4	F4
FN+5	F5
FN+6	F6
FN+7	F7
FN+8	F8
FN+9	F9
FN+0	F10
FN+-	F11

Full-size Keyboard Keys

SHORTCUT	FUNCTION
FN+=	F12
FN+P	Print screen
FN+PGDN	Home
FN+INS	End
FN+Del	Swap all function keys (1,2,3...=)to F1-F12 (DEL key will light up white when on)

Easy automatic cordless connection

- Connect the USB nano receiver to your computer into your PC USB port, wait until automatic installation has completed.



FCC Compliance Notice

This device complies with part 15 of the FCC Rules. Operation is subject to the following two conditions:

- (1) This device may not cause harmful interference, and
- (2) this device must accept any interference received, including interference that may cause undesired operation.

Any changes or modifications not expressly approved by the party responsible for compliance could void the user's authority to operate the equipment.

This equipment has been tested and found to comply with the limits for a Class B digital device, pursuant to part 15 of the FCC Rules. These limits are designed to provide reasonable protection against harmful interference in a residential installation. This equipment generates, uses and can radiate radio frequency energy and, if not installed and used in accordance with the instructions, may cause harmful interference to radio communications. However, there is no guarantee that interference will not occur in a particular installation. If this equipment does cause harmful interference to radio or television reception, which can be determined by turning the equipment off and on, the user is encouraged to try to correct the interference by one or more of the following measures:

- Reorient or relocate the receiving antenna.
- Increase the separation between the equipment and receiver.
- Connect the equipment into an outlet on a circuit different from that to which the receiver is connected.
- Consult the dealer or an experienced radio/TV technician for help.

FCC Radiation Exposure Statement

This equipment complies with FCC radiation exposure limits set forth for an uncontrolled environment .

This transmitter must not be co-located or operating in conjunction with any other antenna or transmitter.