

User Manual

For Brilliant Living

Introduction

Package Contents

1. Torchiere Lamp X1

3. Wireless Wall Switch X1

5. AAA Battery X2

7. User Manual X1
2. Remote Control X1

4. Adapter X1

6. 27A Battery X1

Specifications

Model: FM-28

CRI: >90

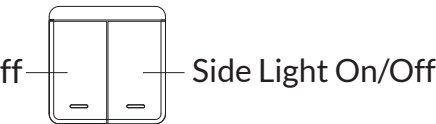
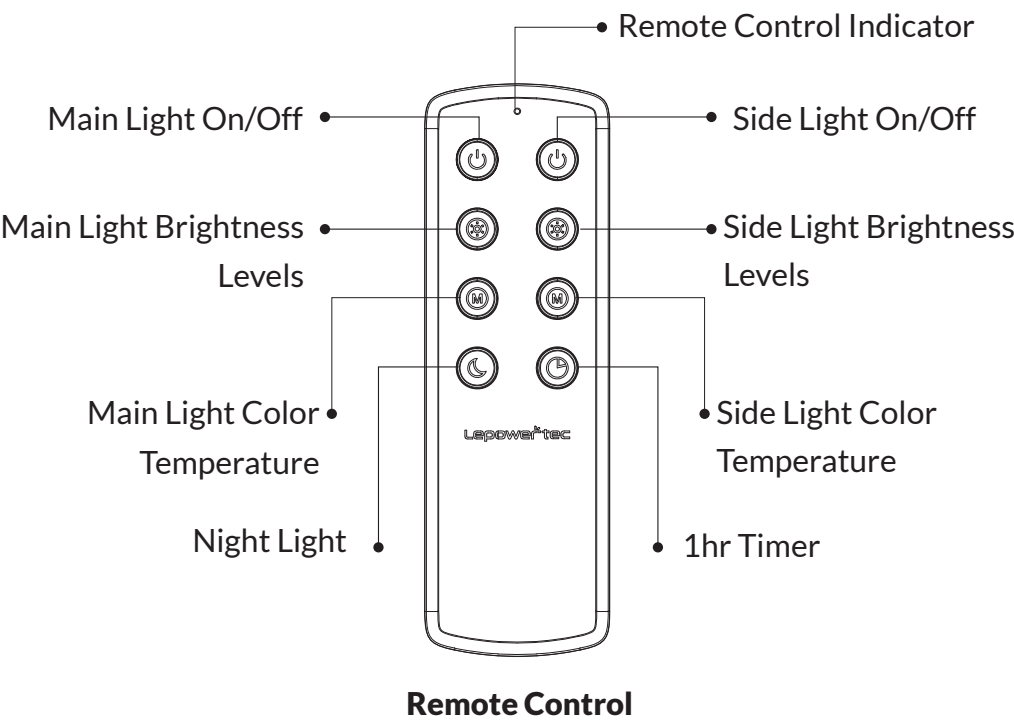
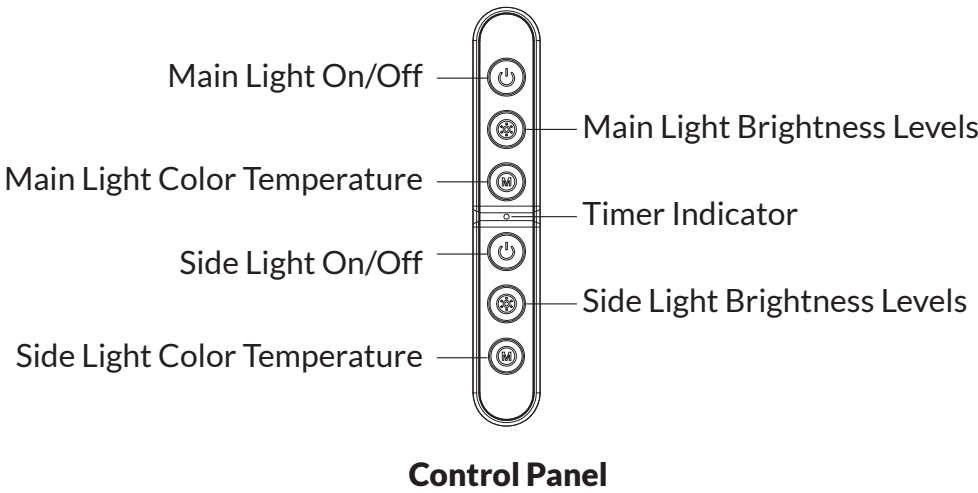
Height: 70.9in

Adapter: DC24V/1.5A

Material: Metal + PC

Cord Length: 78.7in

Controls & Indicators



Wireless Wall

Note: For all the above, the main light and the side light are controlled separately.

- ⌚

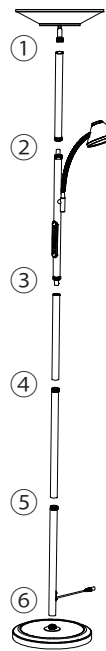
Timer: Press to set a 1hr off-timer. Works at the same time on both the main light and the side light.
- 🌙

Night Light: Press to enter night light mode. **Long press** to adjust the brightness of the night light (40-200lm).

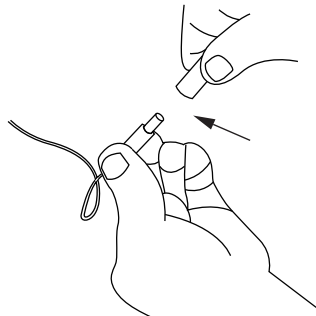
Instructions

1. Unbox the light and all accessories. Check the package content list, and if any part(s) is missing, please contact our customer service team.

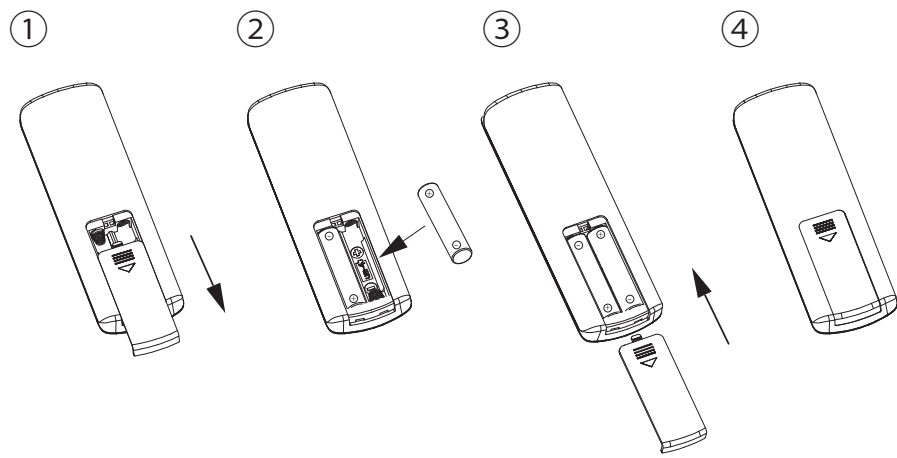
2. Tighten the pole clockwise according to the steps.



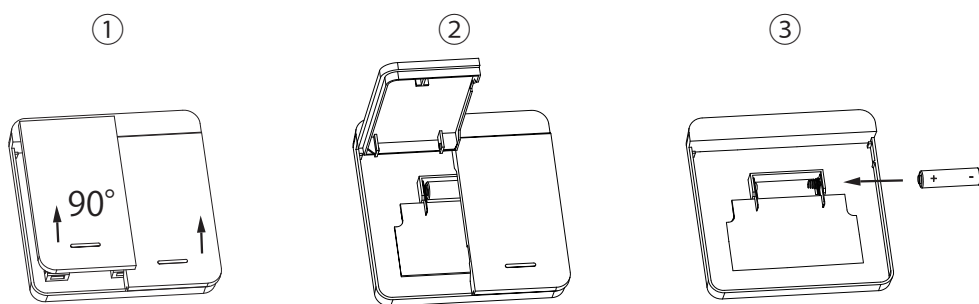
3. Plug in.



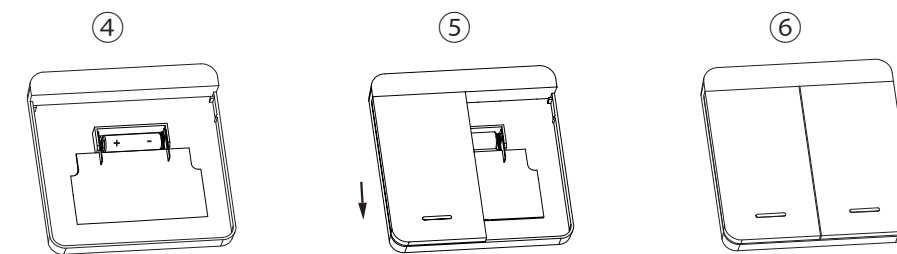
4. Put the AAA battery into the remote control.



5. Put the 27A battery into the wireless wall switch.



Push upward until it opens



Push back

Troubleshooting

Issues	Solutions
The remote control does not work.	1.Press any button on the remote control. If the indicator does not light up, please switch the battery.
	2.Press any button on the remote control. If the indicator lights up, please repair the remote control to the light: <div><div>① While the light is plugged in and powered, press ⌚ and 🌙 of the main light simultaneously for 2s until the main light starts to flash.</div><div>②Press any button on the remote control.</div></div>
	③Repair is finished, and the main light should stay on.
The wireless wall switch does not work.	1.Press any side of the wireless wall switch. If the indicator does not light up, please switch the battery.
	2.Press any side of the wireless wall switch. If the indicator lights up, please repair the wireless wall switch to the light:

Issues	Solutions
	<div>①While the light is plugged in and powered, press ⌚ and 🌙 of the main light simultaneously for 2s until the main light starts to flash.</div> <div>②Press any side of the wireless wall switch.</div> <div>③Repair is finished, and the main light should stay on.</div>
What is the control radius of the remote control and the wireless wall switch?	The maximum is 42.8ft when there are no obstacles.
Can the remote control or the wireless switch control more than 1 lamp?	No
Is it compatible with smart plugs?	Yes. It can be used with smart plugs to control on/off, but not for adjusting brightness or changing color temperature.

Cautions

- Please use the adapter included, and do not use others.
- This lamp is not waterproof; please avoid water and splashes.
- The working temperature for this lamp is 14-104°F.
- The light source of this lamp is irreplaceable. If there is a failure, the whole lamp needs to be switched.
- Do not let children assemble or play with the lamp by themselves.
- Please keep from heat source.
- Please keep from potential endangerment.
- Please place this lamp on level surfaces.

Warranty

We provide a 12-month warranty for the light and a 60-day money-back guarantee for quality problems.
Note: Damages caused by the disregard of this user manual are not subject to warranty.

Contact Us

At LEPOWER-TEC, we value your experience. If you have any questions about our products, click 'ask a question' in our store and email us. Our dedicated team will respond promptly to provide the support you need. Thank you for choosing LEPOWER-TEC, and we look forward to serving you.

注：
尺寸：宽592*高210mm 四折
材质：128g双铜

FCC Statement

This equipment has been tested and found to comply with the limits for a Class B digital device, pursuant to part 15 of the FCC Rules. These limits are designed to provide reasonable protection against harmful interference in a residential installation. This equipment generates, uses and can radiate radio frequency energy and, if not installed and used in accordance with the instructions, may cause harmful interference to radio communications. However, there is no guarantee that interference will not occur in a particular installation. If this equipment does cause harmful interference to radio or television reception, which can be determined by turning the equipment off and on, the user is encouraged to try to correct the interference by one or more of the following measures:

- Reorient or relocate the receiving antenna.
- Increase the separation between the equipment and receiver.
- Connect the equipment into an outlet on a circuit different from that to which the receiver is connected.
- Consult the dealer or an experienced radio/TV technician for help.

Caution: Any changes or modifications to this device not explicitly approved by manufacturer could void your authority to operate this equipment.

This device complies with part 15 of the FCC Rules. Operation is subject to the following two conditions: (1) This device may not cause harmful interference, and (2) this device must accept any interference received, including interference that may cause undesired operation.

RF Exposure Information

The device has been evaluated to meet general RF exposure requirement. The device can be used in portable exposure condition without restriction.