

SprintRay Pro 2

Model SRP2405A
The Most Advanced 3D Printer in Dentistry
Quick Start Guide
Rev2-030524

Congratulations!

You're about to unbox the most advanced dental 3D printer ever made. This guide contains everything you need to know to get started with Pro 2.

We're so excited to see how you use it to impact patient lives!

Training and Support

SprintRay University provides personalized virtual and in-person courses designed to maximize your printing experience. Discover more at sprintrayuniversity.com

If you have questions about your new products, please reach out to SprintRay:

Visit support@sprintray.com
Chat sprintray.com/chat
Email support@sprintray.com

Sign Up

Sign up at account.sprintray.com

Sign Up with SprintRay

Your SprintRay account is used for everything from sending print jobs, ordering designs, and purchasing consumables.

You'll need an active account to send print files to your Pro 2.

Order Consumables

Visit the [SprintRay store](https://store.sprintray.com) to order resin, tanks, and accessories for your Pro 2.

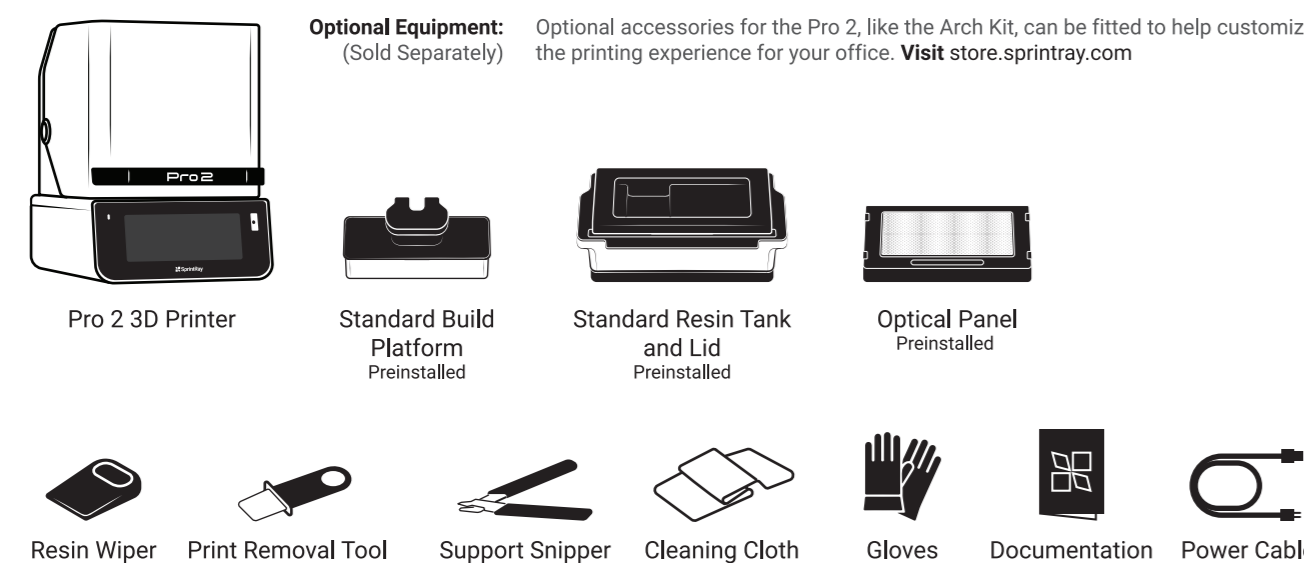
Order Appliance Designs

Submit scan files and patient information, receive 3D designs that are ready to print. Available treatments include occlusal guards, surgical guides, clear aligners, hybrid dentures, crowns, removable dentures, smile designs, veneers, bleaching trays, and more.

Unbox

Pro 2 ships with a standard build platform and resin tank, optimized for maximum throughput. The build platform, resin tank, and Optical Panel are preinstalled.

Optional Equipment: (Sold Separately) Optional accessories for the Pro 2, like the ArchKit, can be fitted to help customize the printing experience for your office. Visit store.sprintray.com



Create a Workspace

The physical space your printer occupies plays a vital role in its success. Dust, heat, and direct sunlight can drastically impact your system's success or failure.

For best results, set Pro 2 near your other SprintRay devices for optimal workflow efficiency. Turn the leveling feet on the bottom of the device to fine-tune the position of the printer and ensure that it sits level.

Recommended Operating Temperature: Min 70°F (21°C) - Max 85°F (29°C)

WARNING! Do not place your printer near a mill or other equipment that produces dust. The inner components of the printer are highly sensitive, and excessive dust accumulation can impact print quality and accuracy.

Do

- Level surface
- Clean workspace
- Away from other equipment
- Away from windows and sunlight
- Consistent temperature 70-85 F
- Well ventilated area

Don't

- Uneven surface
- Dusty, dirty workspace
- Near other lab equipment
- Near windows or its sunlight
- Large temperature swings
- Poor ventilation

Level Surface Optimal Environment
Uneven Surface Warm Environment

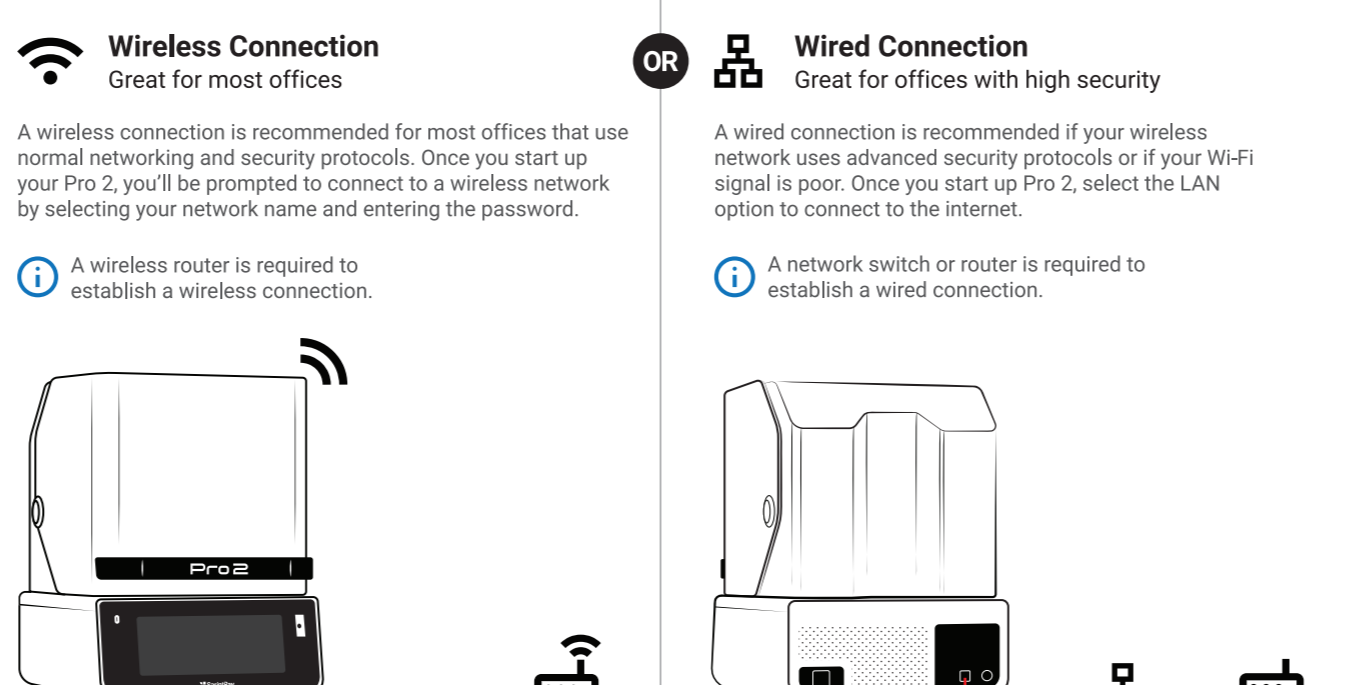
Connecting Your SprintRay

Pro 2 is designed to be used with an active internet connection. Ordering designs, sending print jobs, and automatic handoff between devices require a SprintRay account with an active internet connection.

Advanced security protocols may prevent Pro 2 from connecting to the internet. Contact your network administrator for assistance.

Wireless Connection Great for most offices
A wireless connection is recommended for most offices that use normal networking and security protocols. Once you start up your Pro 2, you'll be prompted to connect to a wireless network by selecting your network name and entering the password.

Wired Connection Great for offices with high security
A wired connection is recommended if your wireless network uses advanced security protocols or if your Wi-Fi signal is poor. Once you start up Pro 2, select the LAN option to connect to the internet.



Network Security May Block Connection

Firewalls or antivirus software designed to secure your network may prevent your computer from finding the printer and connecting to SprintRay Cloud. If you need help getting connected, work with your network administrator and SprintRay support.

Hello, SprintRay

Pro 2 comes out of the box with the build arm lowered to the resin tank. The lid may also be locked to protect it in transit.

When you turn Pro 2 on, the build platform will rise and the lid will unlock.

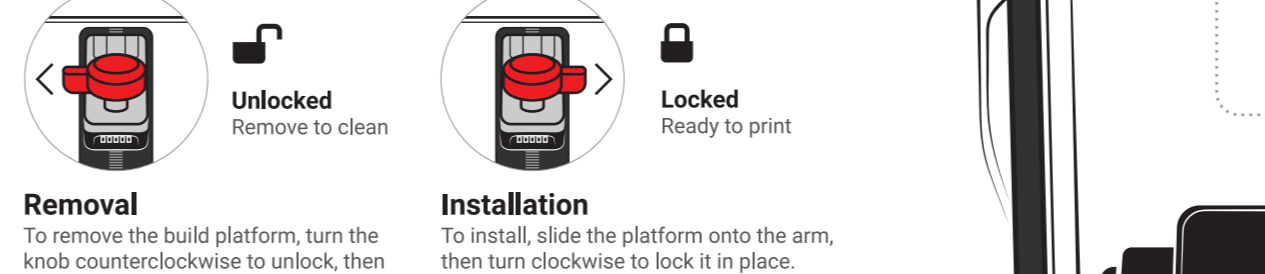
Plug In and Power Up

Use the provided power cable to plug your Pro 2 into an uninterrupted power supply or surge protector. To turn it on, press the power button.

When Pro 2 is on, press the power button to power off or restart. You can also press and hold the power button for 5 seconds to power it off.

Build Platform Lock

Pro 2 uses a magnetic lock to perfectly align and hold the build platform into place.



Build Platform

Maintenance Keep the platform clean and don't gouge it with sharp objects when removing prints. Do not drop.

Platform Heating The build platform is equipped with a powerful heater. It may be warm to the touch.

Offline Printing

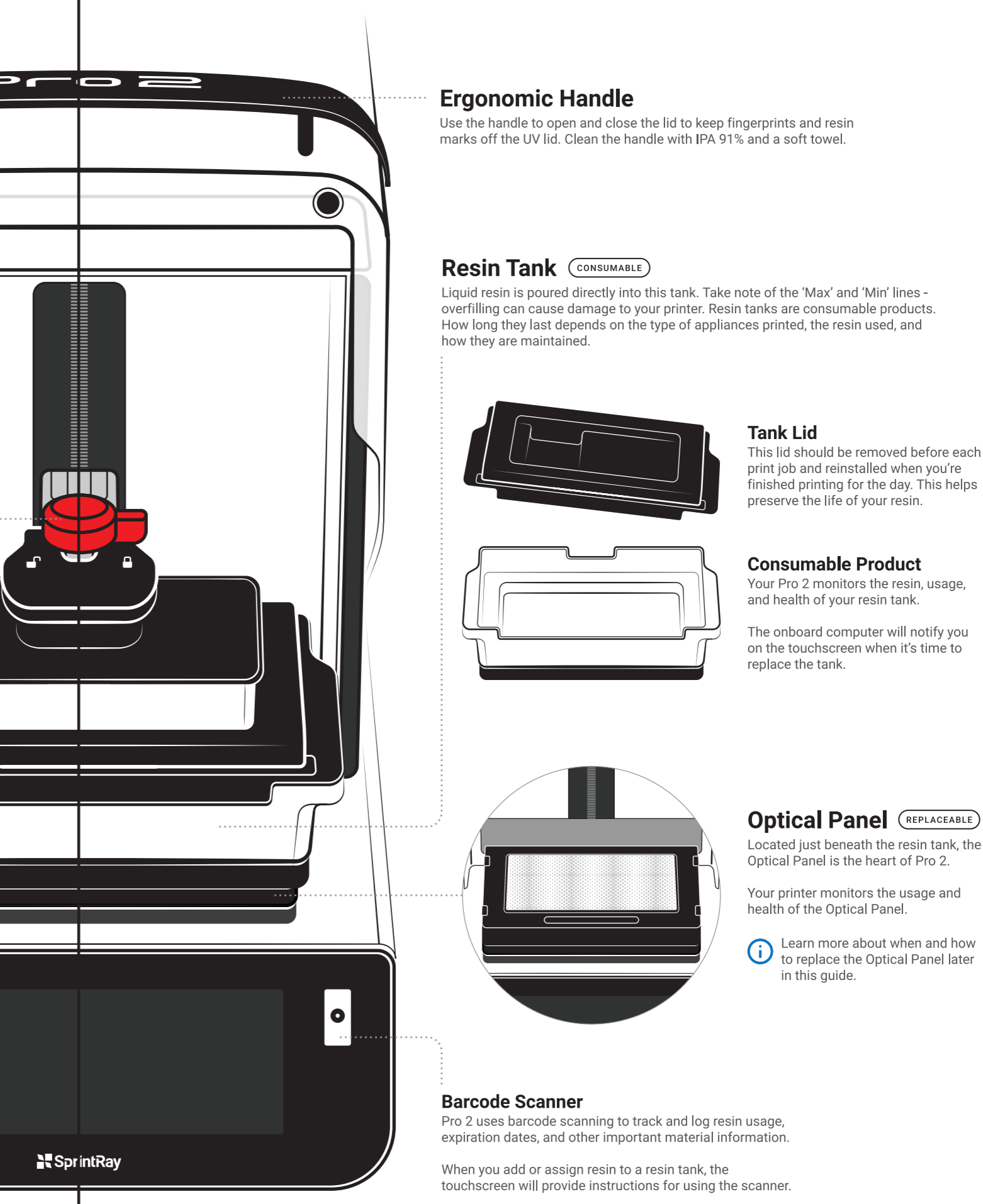
Use this USB-C port if you're having connectivity issues. Download print jobs onto a USB drive, then plug into Pro 2 and start printing.

Command Center

The ultrawide screen and powerful onboard computer allow you to create and manage print jobs, track the status of your consumables, and get step-by-step instructions for many workflows.

Sign In with SprintRay

To get the most out of your Pro 2, make sure to connect it to the internet and sign in with your SprintRay account.



Ergonomic Handle

Use the handle to open and close the lid to keep fingerprints and resin marks off the UV lid. Clean the handle with IPA 91% and a soft towel.

Resin Tank

Liquid resin is poured directly into this tank. Take note of the 'Max' and 'Min' lines—overfilling can cause damage to your printer. Resin tanks are consumable products. How long they last depends on the type of appliances printed, the resin used, and how they are maintained.

Tank Lid

This lid should be removed before each print job and reinstalled when you're finished printing for the day. This helps preserve the life of your resin.

Consumable Product

Your Pro 2 monitors the resin, usage, and health of your resin tank. The onboard computer will notify you on the touchscreen when it's time to replace the tank.

Optical Panel

Located just beneath the resin tank, the Optical Panel is the heart of Pro 2. Your printer monitors the usage and health of the Optical Panel.

Learn more about when and how to replace the Optical Panel later in this guide.

Barcode Scanner

Pro 2 uses barcode scanning to track and log resin usage, expiration dates, and other important material information. When you add or assign resin to a resin tank, the touchscreen will provide instructions for using the scanner.

Resin Tank

The resin tank holds liquid resin during the printing process. When you're not printing, cover the tank with the included lid.

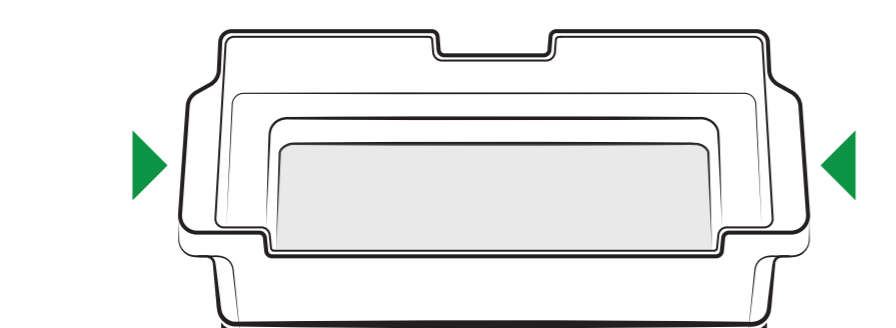
Wear Gloves Always wear gloves when handling uncured resin.

Do

- Use one tank for each resin type
- Keep away from light
- Hold by the handles
- Cover when not using
- Wear gloves while handling

Don't

- Change the resin type often
- Touch the film or underside
- Use sharp objects
- Puncture the film

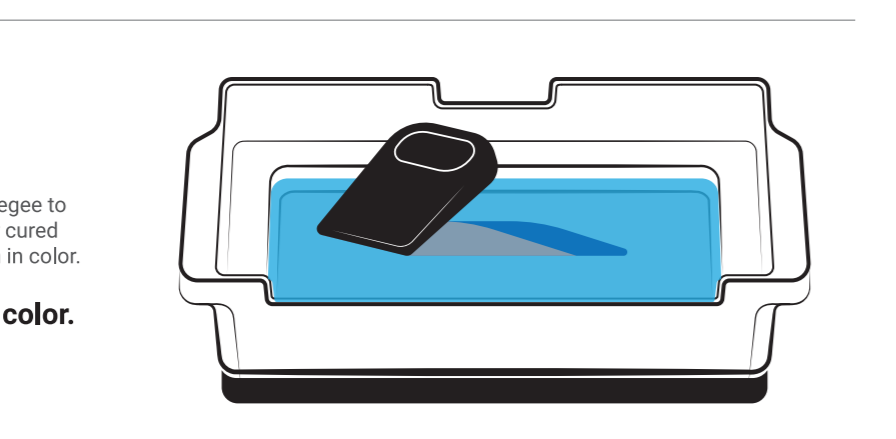


Pour Resin into the Tank

To activate a new resin tank, follow the instructions on the touchscreen to scan the bottle or select the resin type manually.

Pour resin directly from the bottle into the tank, filling until the resin is between the 'Min' and 'Max' lines.

Do not overfill.



Replace When Directed

The touchscreen on Pro 2 monitors resin usage and will notify you when it's time to replace a resin tank.

Failure to replace your resin tank in a timely manner may cause catastrophic damage to your printer that may not be covered under the warranty.

For best results, keep an extra tank on hand and don't switch resin types.

Optical Panel

The Optical Panel is a long-term consumable item that is easy to replace in your office. You can track its health and usage via the printer touchscreen.

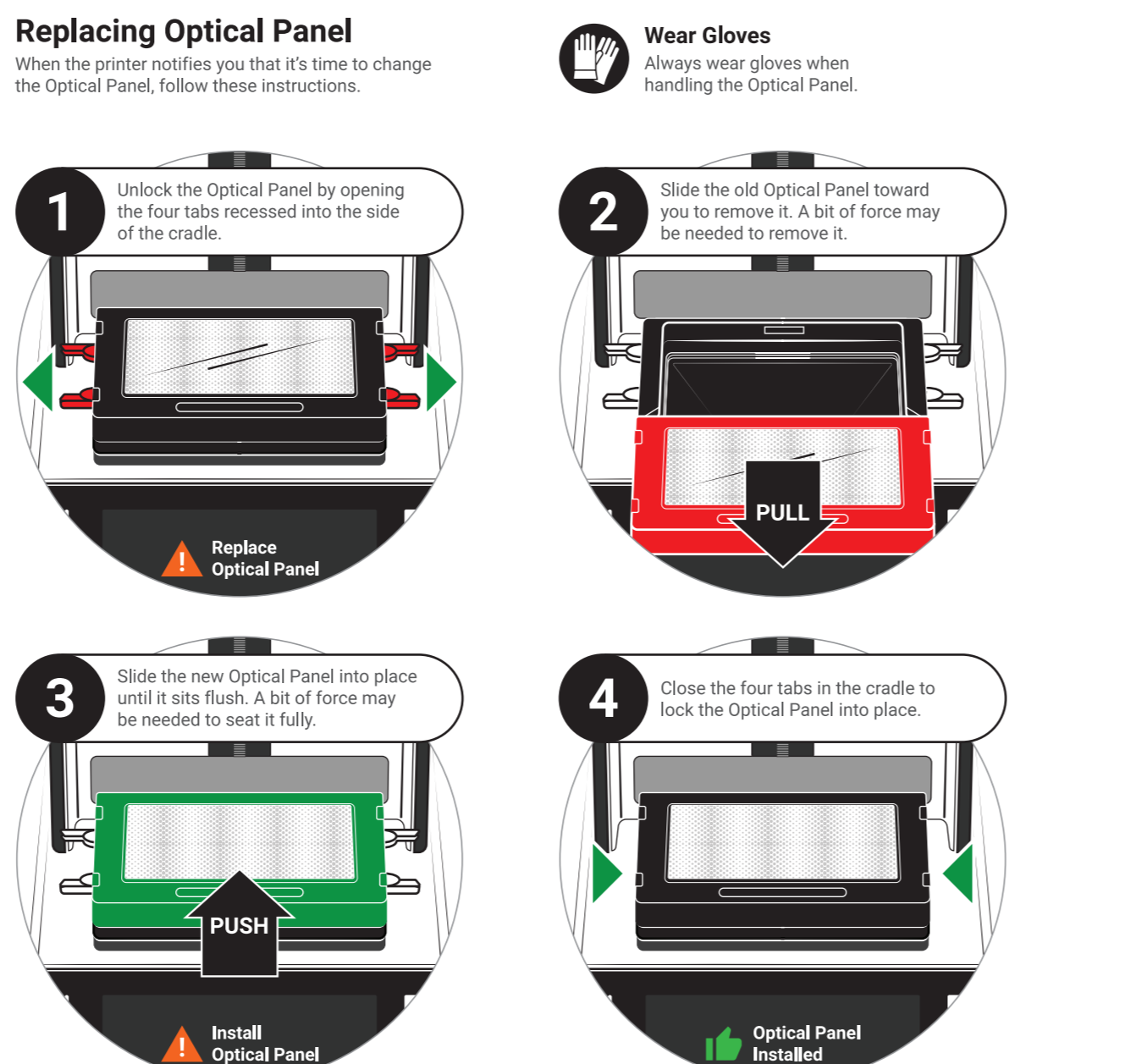
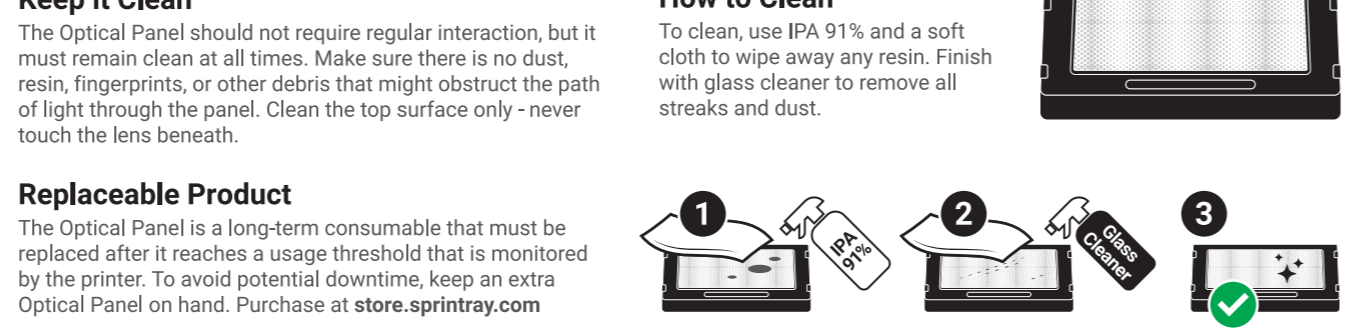
Only replace the Optical Panel when directed by the printer touchscreen or customer support.

Keep it Clean The Optical Panel should not require regular interaction, but it must remain clean at all times. Make sure there is no dust, resin, fingerprints, or other debris that might obstruct the path of light through the panel. Clean the top surface only—never touch the lens beneath.

Replaceable Product The Optical Panel is a long-term consumable that must be replaced after it reaches a usage threshold that is monitored by the printer. To avoid potential downtime, keep an extra Optical Panel on hand. Purchase at store.sprintray.com

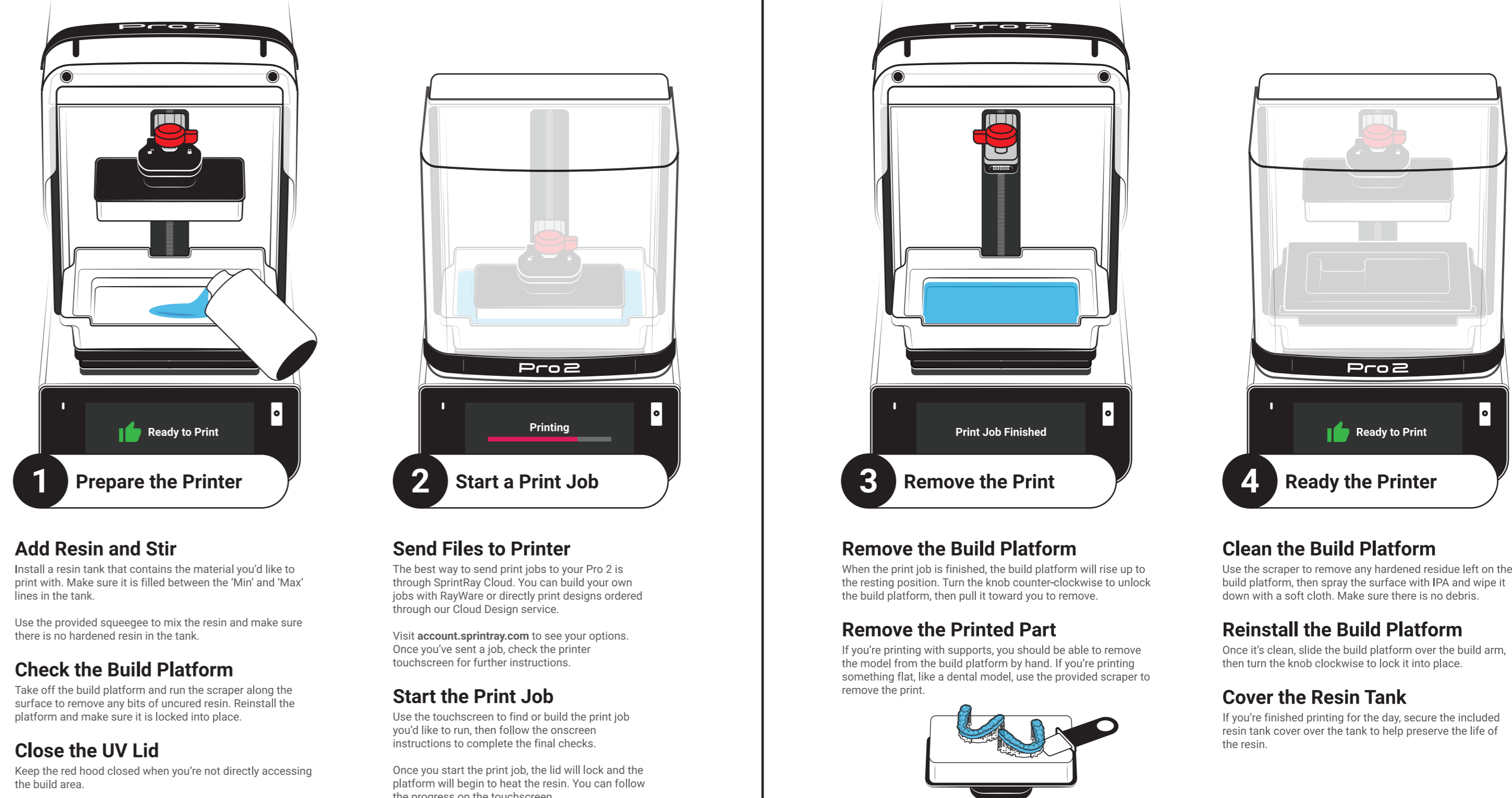
How to Clean To clean, use IPA 91% and a soft cloth to wipe away any resin. Finish with glass cleaner to remove all streaks and dust.

Wear Gloves Always wear gloves when handling the Optical Panel.



The 3D Printing Workflow

This guide provides a general overview of the printing workflow, but the best way to learn is by doing. When you first boot up your printer, you'll be prompted to complete the first-time print, which will take you through each step in detail.



End-to-End Workflow

Pro 2 is designed to work best with SprintRay washing and curing devices for automatic handoff and processing profiles.

Visit sprintray.com to learn more about post processing devices.

FCC STATEMENT :

This device complies with Part 15 of the FCC Rules. Operation is subject to the following two conditions:

- (1) This device may not cause harmful interference, and
- (2) This device must accept any interference received, including interference that may cause undesired operation.

Warning: Changes or modifications not expressly approved by the party responsible for compliance could void the user's authority to operate the equipment.

NOTE: This equipment has been tested and found to comply with the limits for a Class B digital device, pursuant to Part 15 of the FCC Rules. These limits are designed to provide reasonable protection against harmful interference in a residential installation. This equipment generates uses and can radiate radio frequency energy and, if not installed and used in accordance with the instructions, may cause harmful interference to radio communications. However, there is no guarantee that interference will not occur in a particular installation. If this equipment does cause harmful interference to radio or television reception, which can be determined by turning the equipment off and on, the user is encouraged to try to correct the interference by one or more of the following measures:

- Reorient or relocate the receiving antenna.
- Increase the separation between the equipment and receiver.
- Connect the equipment into an outlet on a circuit different from that to which the receiver is connected.
- Consult the dealer or an experienced radio/TV technician for help.

RF warning statement:

This equipment complies with FCC radiation exposure limits set forth for an uncontrolled environment. This equipment should be installed and operated with minimum distance 20cm between the radiator & your body.

- English: "

This device complies with Industry Canada licence-exempt RSS standard(s). Operation is subject to the following two conditions:

- (1) this device may not cause interference, and
- (2) this device must accept any interference, including interference that may cause undesired operation of the device."

- French:"

Le présent appareil est conforme aux CNR d'Industrie Canada applicables aux appareils radio exempts de licence. L'exploitation est autorisée aux deux conditions suivantes :

- (1) l'appareil n' doit pas produire de brouillage, et
- (2) l'utilisateur de l'appareil doit accepter tout brouillage radioélectrique subi, même si le brouillage est susceptible d'en compromettre le fonctionnement."

Operation of this device in the band 5150-5350 MHz is restricted to indoor use only.
Le fonctionnement de cet appareil dans la bande 5 150-5 350 MHz est limité à une utilisation en intérieur uniquement.