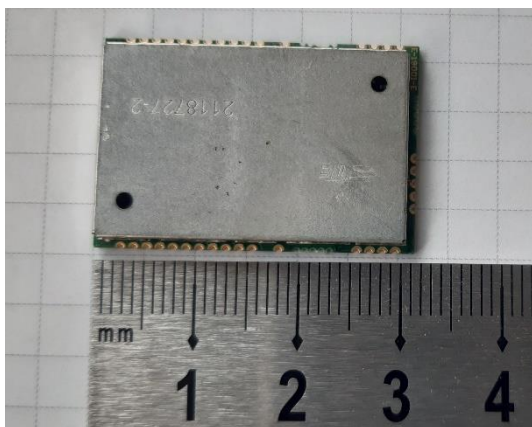


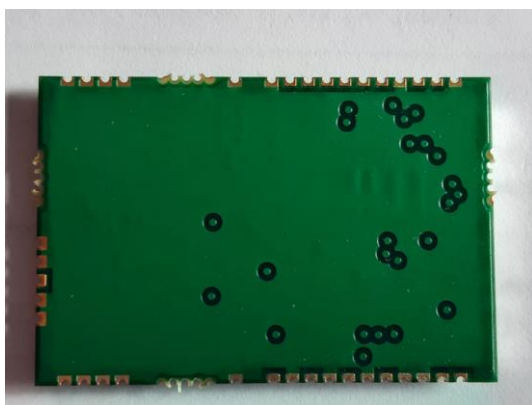
External Photos

1. Module

Here is the top view of the KIM1 (without label):



Here is the bottom view of the module:



The KIM1 is soldered on an interface board to allow testing. This interface board offers a power supply connector (2pins), a configuration connector (UART 6pins), a RF connector for antenna (SMA):



2. Dipole antenna

Here is a photo of the stick antenna potentially associated with the KIM1:

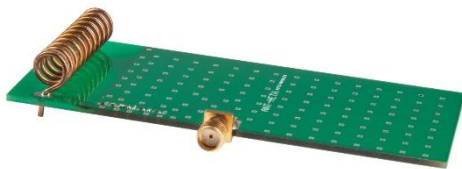


As, the interface board connector and antenna connectors are not compatible, it is required to use a SMA/N-type adapter.

Furthermore, considering the antenna size compared to the interface board, it is required to use a cable between both.

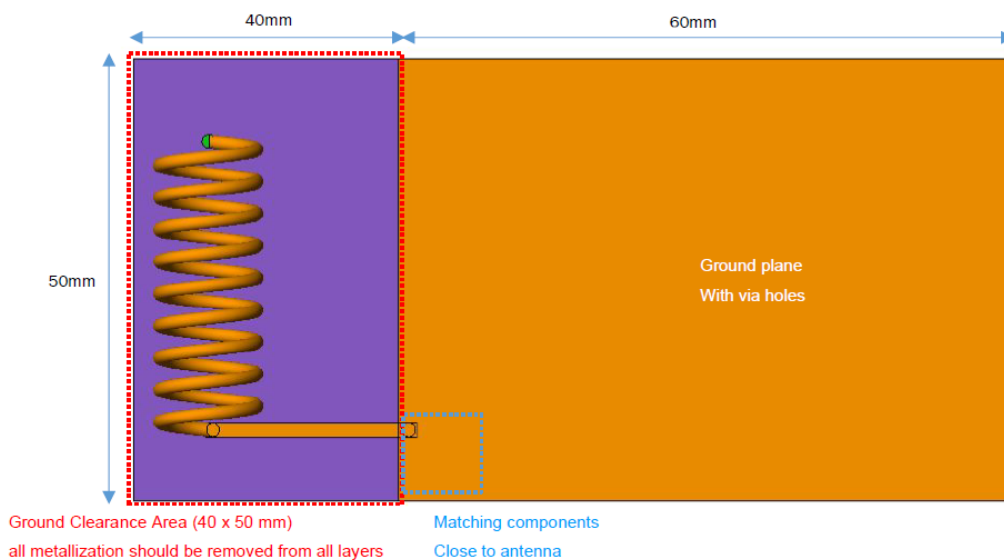
3. Coil antenna

Here is the coil antenna on its evaluation board as used during the test:



NB: Considering the interface constraints between module and antenna board, a RF cable SMA-SMA 1m long, as illustrated above, has been used.

The dimensions of antenna evaluation board are:



The matching circuit is:

