

XR-2 User Instruction

使用说明书

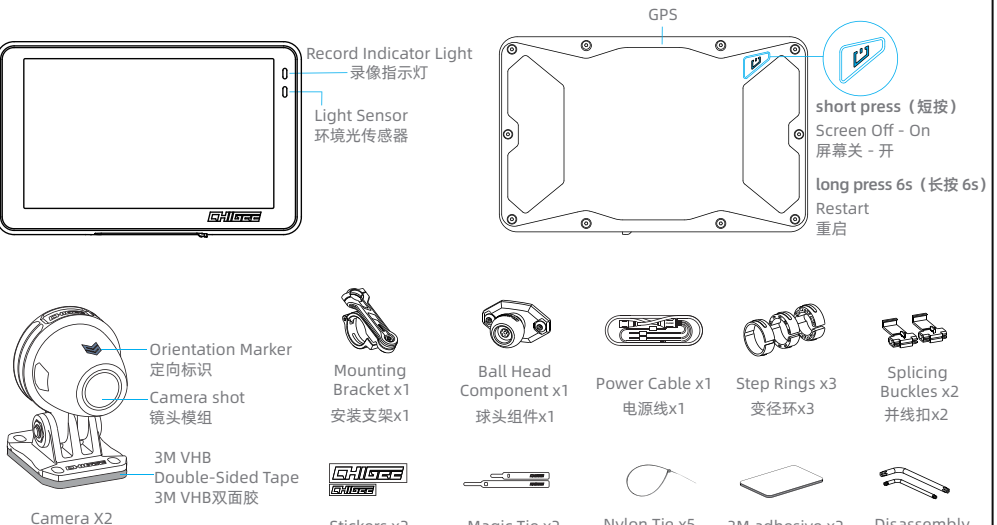
01 Product Overview (产品概述)

Introduction (简介)

The CHIGEE XR-2 Motorcycle Smart Riding System is equipped with front and rear 1080P dual cameras. The main unit features a high-brightness 1400nit 4.3-inch IPS 800*480 HD touchscreen, providing smooth wireless screen mirroring, online navigation, BSD blind spot monitoring, and other functions relying on powerful main control processing power. The main unit also has 5G Wi-Fi and 5Hz high-precision satellite positioning capabilities. The XR-2 main unit supports IP68 dust and water resistance, easily coping with harsh environments. Additionally, it can be equipped with a variety of optional accessories to expand personalized usage needs.

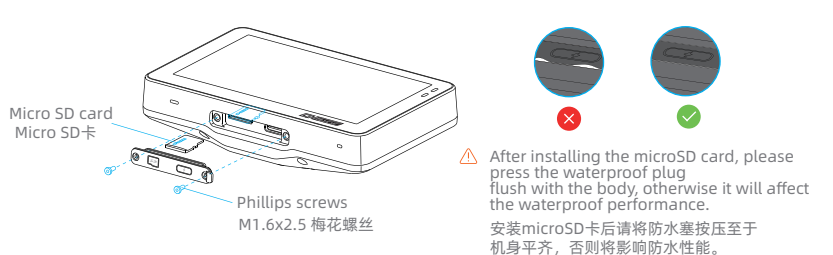
CHIGEE XR-2 摩托车智能骑行系统。配备前后 1080P 双摄像头，主机搭载 1400nit 高亮 4.3 寸 IPS 800*480 高清触摸屏，依靠强劲主算力提供流畅的手机无线投屏、在线导航、BSD 盲区监测等功能。主机具备 5G Wi-Fi、5Hz 高精度卫星定位功能。XR-2 主机支持 IP68 级防尘防水，轻松应对严酷环境。此外可搭配丰富选装件，拓展个性化使用需求。

Body and Accessories (主体与配件)



02 Installation Guide (安装指南)

SD Card Installation (SD卡安装)

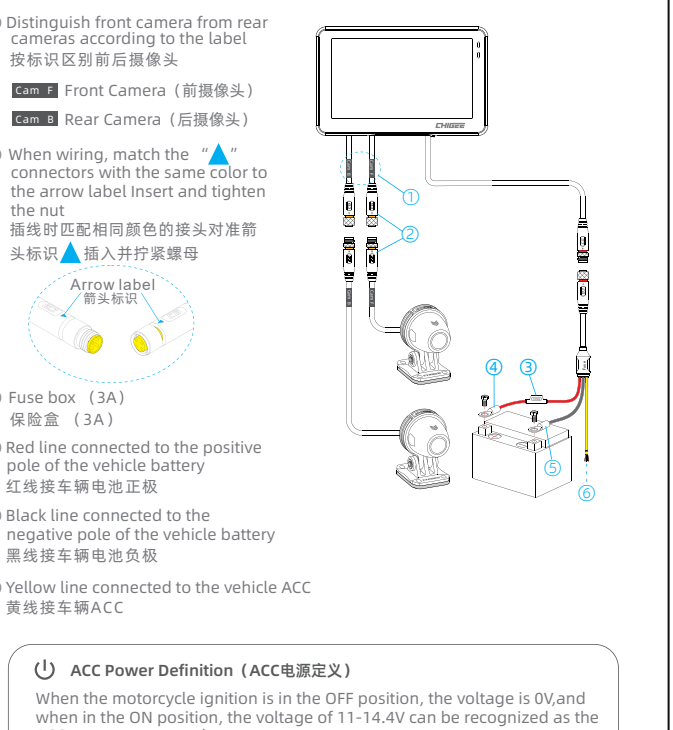


Please use a microSD card with a U3 rating for transmission speed to ensure stable videorecording, otherwise there may be risks of video stuttering and loss. (SD card needs to be purchased separately)
请使用传输速度达到U3级别的microSD卡以保证录像稳定性,否则可能存在录像卡顿、丢失风险。(SD卡需自行购买)

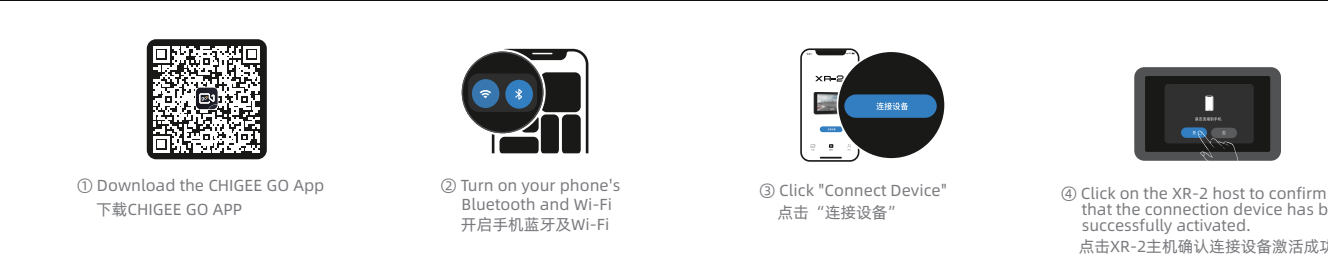
Camera Installation (摄像头安装)



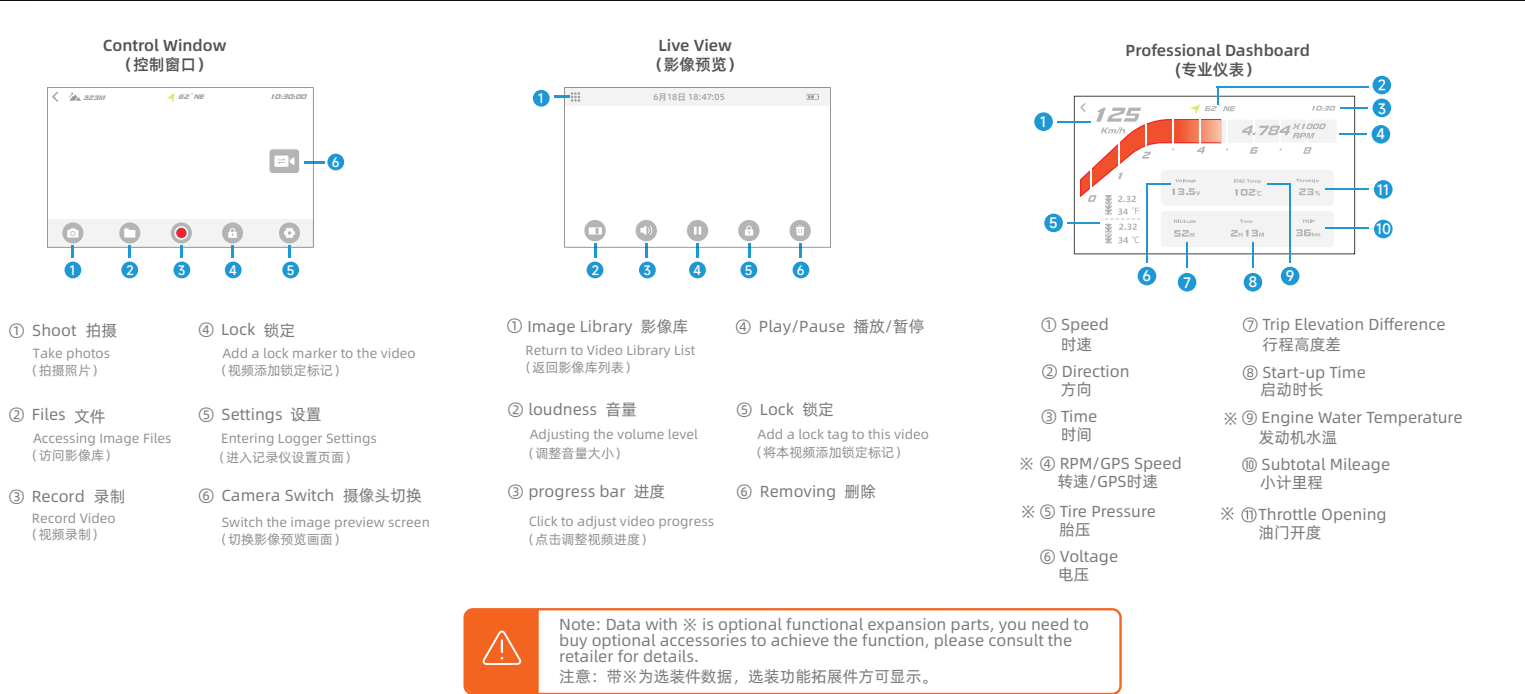
Wiring Diagram (接线图)



03 Product Activation (产品激活)



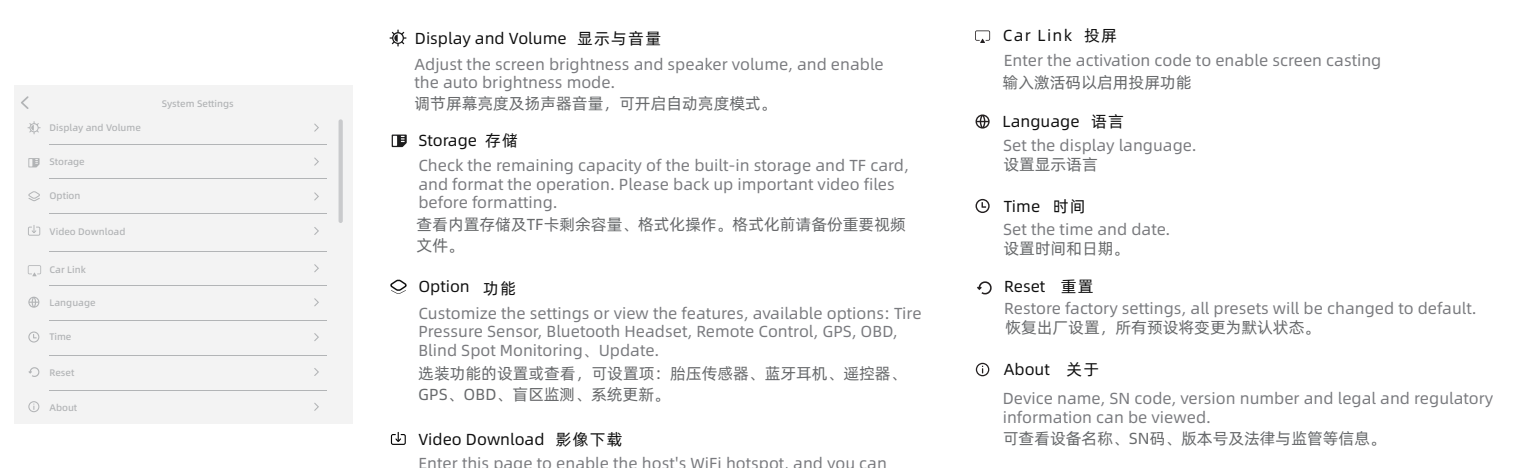
04 Interface (界面介绍)



Setting up the Dash Cam (记录仪设置)



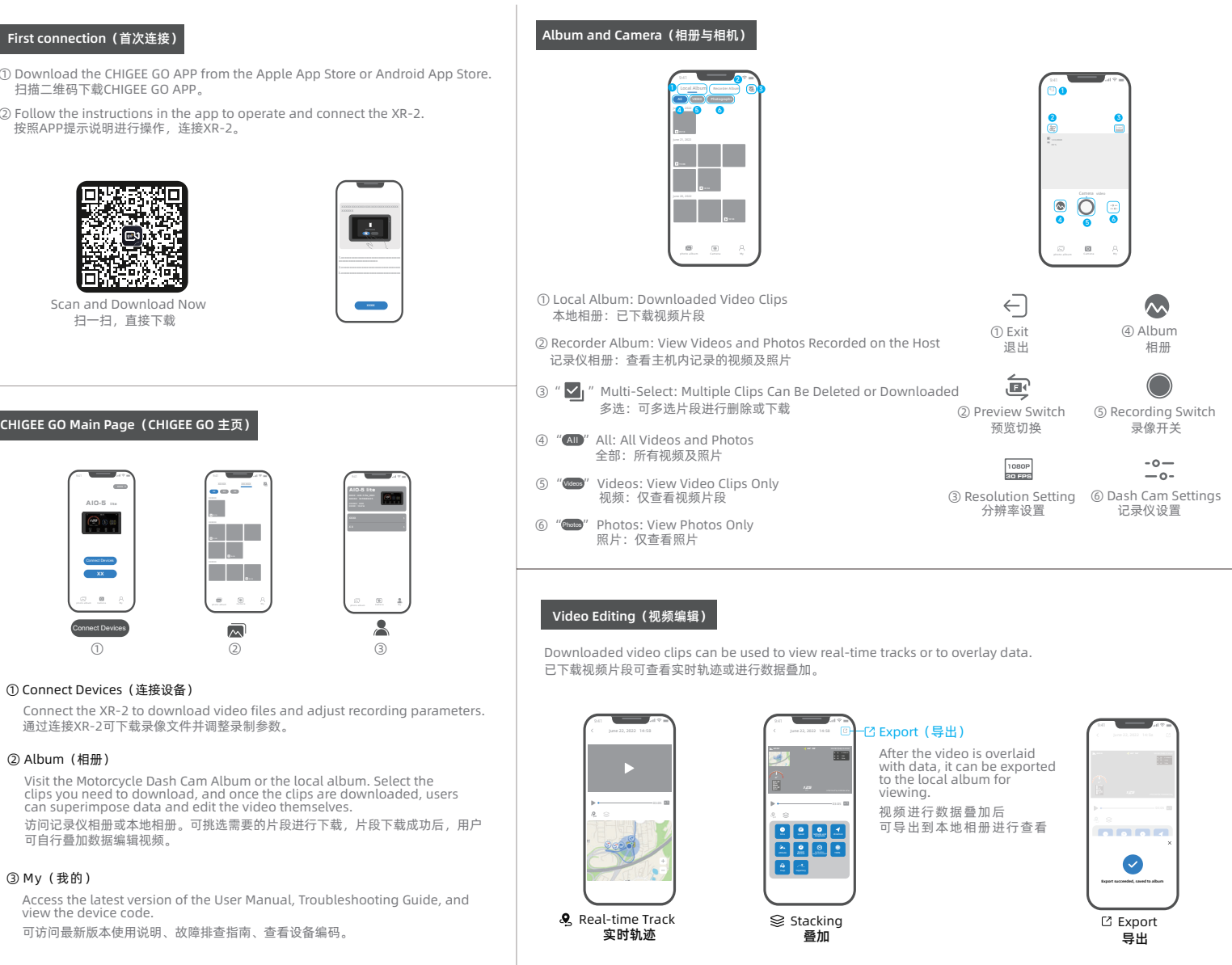
System Settings (系统设置)



05 Optional Accessories (选装配件)



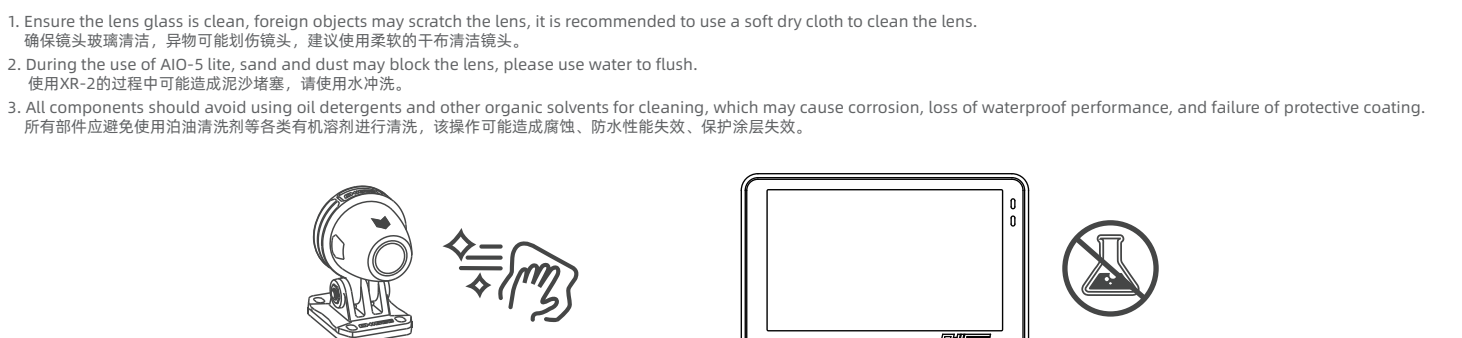
06 CHIGEE GO APP



Firmware Upgrade (固件升级)



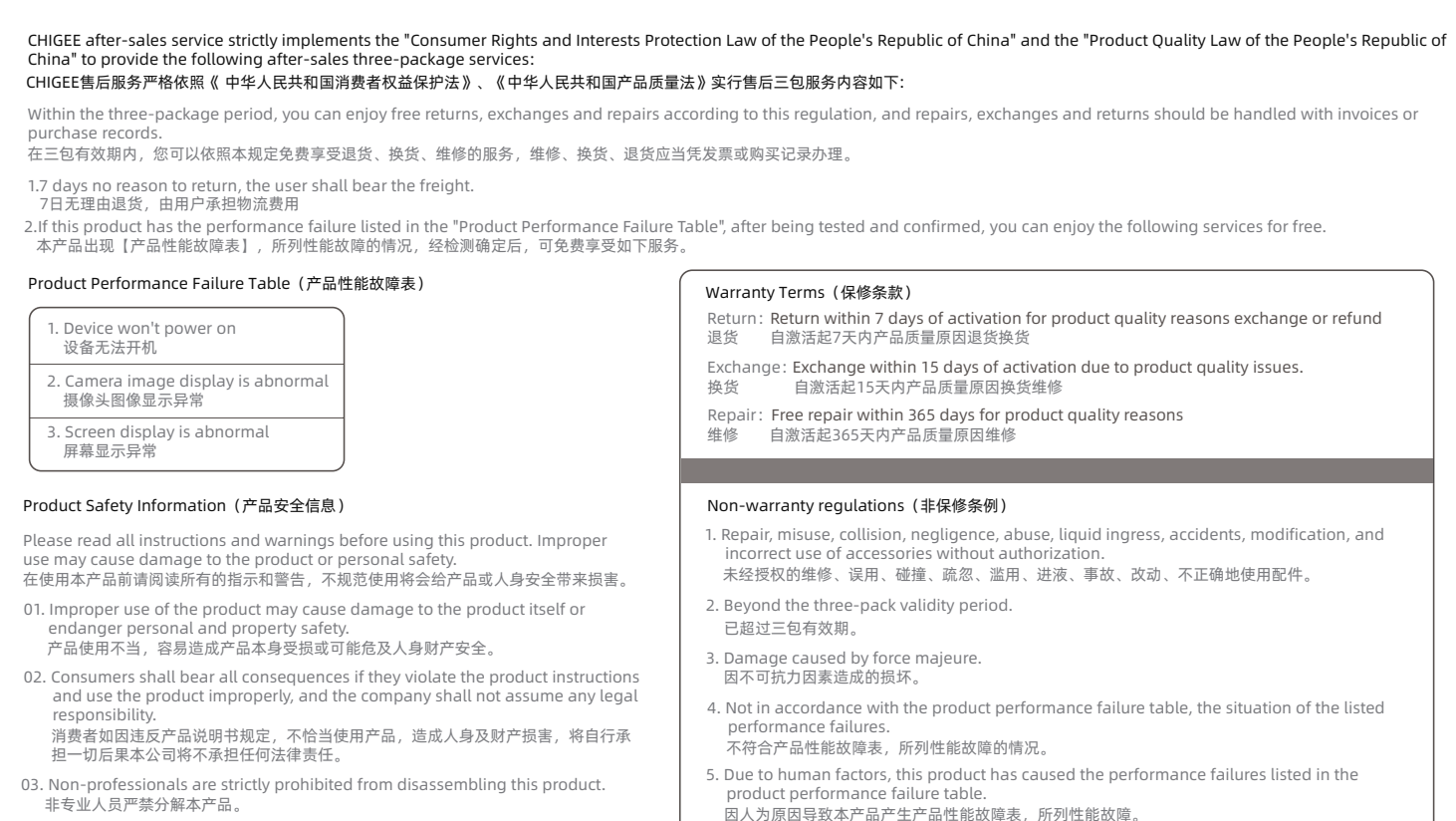
Cleaning and Care Instructions (清洁及注意事项)



07 Parameters (技术参数)

Host/主机	
Size/尺寸:	116.7x73.8x28.3
Weight/重量:	262g
Display/显示屏:	4.3inch 800x480 1400Nit
Rated Input Voltage/工作电压:	12-18V DC
Working current/工作电流:	0.6A
CPU/处理器:	A53*2
Operating temperature/工作温度:	-20~60°C
Bluetooth/蓝牙:	Bluetooth 5.0
WiFi:	2.4/5.8G
GPS:	外置式5Hz GPS模块, GPS+BeiDou
Operating System/系统:	CGOS (Linux)
TF Card Expansion/TF卡拓展:	256GB MAX
Internal Storage/内置存储:	32GB
Video Format/视频格式:	MP4
Resolution/分辨率:	1920*1080
Support peripherals/支持外设:	
Attitude sensor Tire pressure sensor OBD engine data detection module Bluetooth remote control (Optional 选装)	

08 After-sales service (售后服务)



FCC Warning:

This equipment has been tested and found to comply with the limits for a Class B digital device, pursuant to part 15 of the FCC Rules. These limits are designed to provide reasonable protection against harmful interference in a residential installation. This equipment generates, uses and can radiate radio frequency energy and, if not installed and used in accordance with the instructions, may cause harmful interference to radio communications. However, there is no guarantee that interference will not occur in a particular installation. If this equipment does cause harmful interference to radio or television reception, which can be determined by turning the equipment off and on, the user is encouraged to try to correct the interference by one or more of the following measures:

- Reorient or relocate the receiving antenna.
- Increase the separation between the equipment and receiver.
- Connect the equipment into an outlet on a circuit different from that to which the receiver is connected.
- Consult the dealer or an experienced radio/TV technician for help.

Caution: Any changes or modifications to this device not explicitly approved by manufacturer could void your authority to operate this equipment.

This device complies with part 15 of the FCC Rules. Operation is subject to the following two conditions:

(1) This device may not cause harmful interference, and (2) this device must accept any interference received, including interference that may cause undesired operation.

This equipment complies with FCC radiation exposure limits set forth for an uncontrolled environment. This equipment should be installed and operated with minimum distance 20cm between the radiator and your body.