



User Manual

Narwal Freo X Plus Robot Vacuum and Mop

Model: YJCC018

Dear users:

Thank you for purchasing Narwal products. To access comprehensive support from Narwal, you are recommended to read carefully the manual and illustrations before using the product. Please keep the manual properly.

The manual may be updated from time to time based on product updates and user feedback. Please scan the QR code below to browse the official website and view the latest version.
In case of any problem in using the product, please contact Narwal after-sales customer service through the following ways:

Customer service email:
support@narwal.com (North America)
support.eu@global.narwal.com (Germany)
support.it@global.narwal.com (Italy)
support.jp@narwal.com (Japan)
support.fr@global.narwal.com (France)
support.kr@narwal.com (South Korea)
support.es@global.narwal.com (Spain)
*For other countries, please refer to the after-sales contact information provided by your local vendors

We wish you a pleasant experience!



WWW.NARWAL.COM



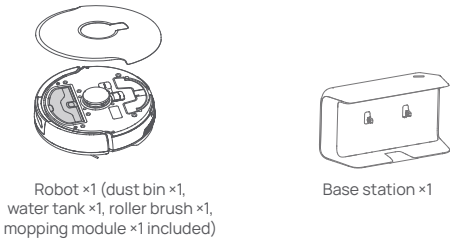
Electronic user manual

en

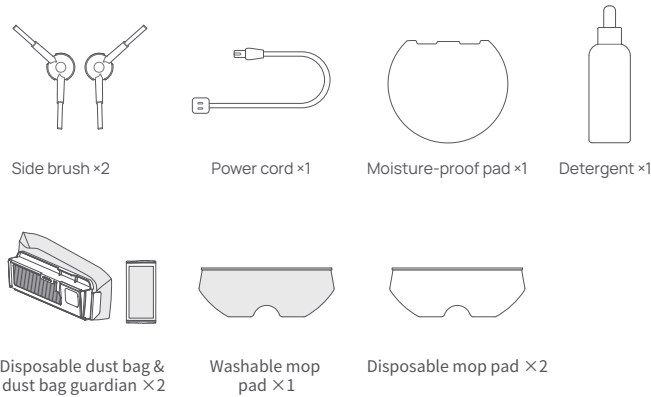
1. Product at a Glance

1.1 Check list

Main parts

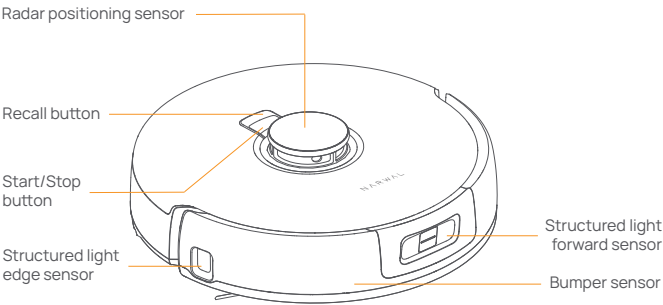


Accessories

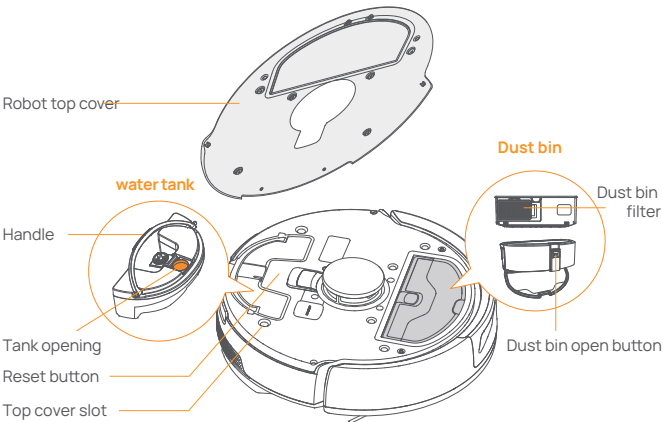


1.2 Robot

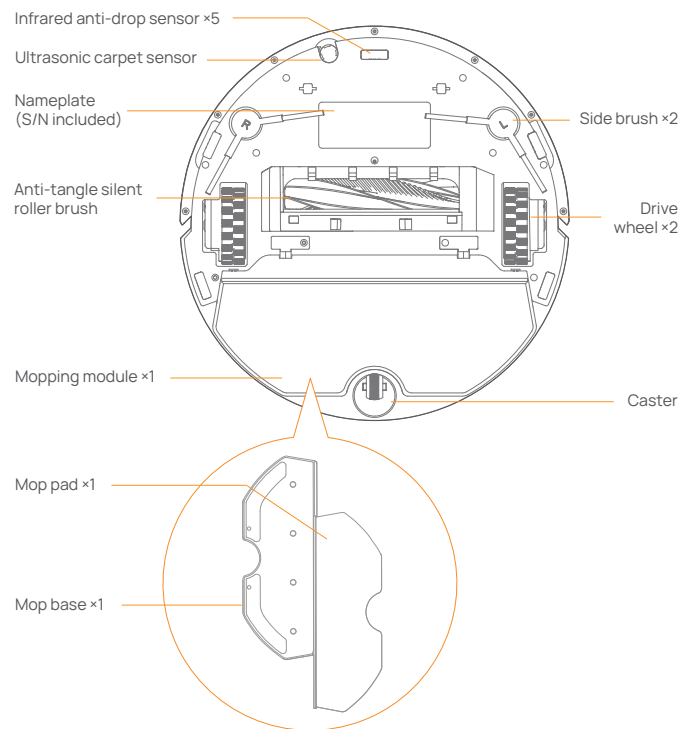
Front (top cover closed)



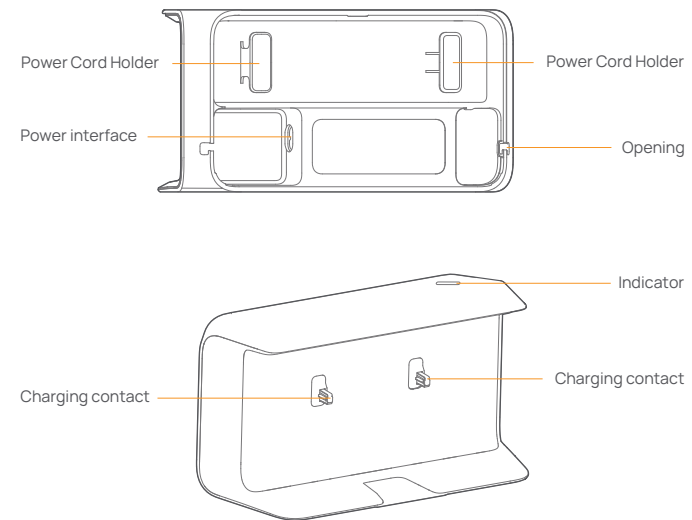
Front (top cover open)



Robot bottom






1.3 Base station



1.4 Robot buttons and indicators

Robot buttons

Button	Action	Function
Start/Stop 	Short press	Start/pause/resume current task
	Press and hold for 2s	Power on/off
Recall 	Short press	Return to the base station
	Press and hold for 2s	Child Lock on/off
Reset 	Short press	Enter the pairing mode
	Press and hold for 5s	Unbind the account and clear user data
	Press and hold for 10s	Restore factory settings

1) Robot indicators

Off	Breathing white	Steady blue
Shutdown or standby	Standby	Task underway

Breathing blue	Breathing orange	Flashing red
Task paused	Network configuring, updating or resetting	Error

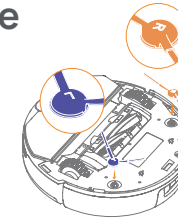
2) Base station indicators

Off	Steady	Breathing	Flashing
Fully charged or base station disconnected	Not charging	Charging	Base station failure

2. Get Ready before Use

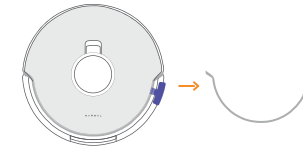
Install the side brushes

Press side brushes into the slots as indicated by color until they click into place.



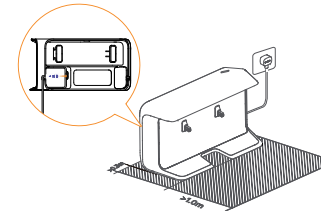
Remove the anti-collision foam

Open the robot top cover and remove the anti-collision foam.



Place the base station

Plug in the power cord in the back of the base station. Put the base station on the flat and hard surface against the wall and leave an open space of at least 1.0m in front of the base station for the robot to enter and leave the base station.

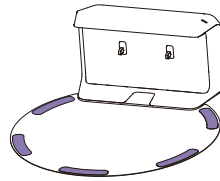


Fix the moisture-proof pad

Once the base station is put in place, wipe the indicated area clean with a dry cloth, peel off the double-sided tape on the back of the moisture-proof pad, and stick the map onto the floor as indicated.

Note:

1. The moisture-proof pad only applies to the wooden floor.
2. To remove the pad from the floor, please keep it slow to avoid residual glue.



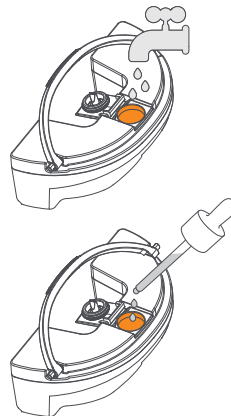
Add water and detergent

·Before mopping, add water and detergent as necessary to the water tank.

Open the top cover of the robot and pull up on the water tank. Remove the stopper for the water tank and fill it with clean water.

·Twist open the cap of the detergent bottle and squeeze the rubber bulb to draw in the detergent. Face the dropper to the tank opening and squeeze the rubber bulb again to drop the detergent into the tank. Repeat the above steps and add another dropper of detergent. (Two droppers of detergent are necessary for a tank of water)

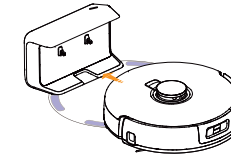
·Place the stopper back, put the water tank back into the robot, and close the top cover.



Note: DO NOT add any third-party detergents or disinfectants into the water tank to avoid product damage.

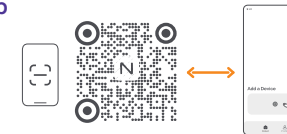
Boot settings

Push the robot into the base station and ensure the charging contacts are properly connected. The base station indicator goes out and the robot will turn itself on and broadcast a message.



Connect and bind the robot in the App

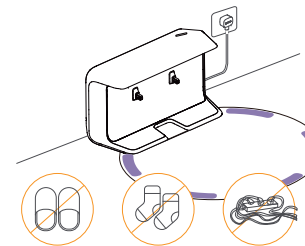
Scan the QR code to download the Narwal App, tap "Add Device" and select the model in the App, and follow the instructions for connecting and binding the robot.



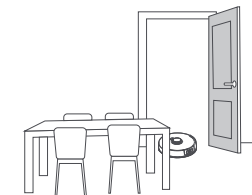
3. How to Use

Before using the robot, please make sure you have finished the installation and base station setup in Chapter 2.

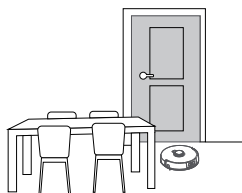
3.1 Organize the home environment



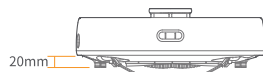
A. Put away the clutter on the floor, e.g. scattered cables, rags, slippers, clothes and books.



B. Open the doors of the rooms to be cleaned and arrange the furniture to leave as much space as possible for cleaning.



C. Leave other doors closed and install the fence to prevent the robot from entering elevated or low areas.




D. The maximum obstacle crossing height is 20mm and the robot cannot enter rooms with a threshold height of over 20mm. You can purchase Narwal Threshold Ramp to help the robot climb over and around obstacles more efficiently.



E. DO NOT stand in front of the robot, on the threshold or in narrow aisles to avoid omission.

3.2 Mapping

Before cleaning a new home, the robot needs to explore the environment and create a map. Before first-time cleaning, you can trigger mapping by short pressing the  **[Start/Stop]** button on the robot or tapping “Start Mapping” in the App.

Note:

1. Once a map is created, it can be edited in the App.
2. Please DO NOT move the base station after a map is created, or you have to restart mapping. If large furniture in your home is rearranged, it is recommended to create a new map.

3.3 Cleaning

Select cleaning modes



The product comes with four built-in cleaning modes: Vacuum, Mop, Vacuum and Mop, and Vacuum then Mop. You can select and adjust parameters like cleaning cycles, suction, and mop humidity for each mode in the App.

Set Freo Advise

Freo Advise is an intelligent cleaning assistant. When the Freo Advise mode is on, the robot can intelligently set cleaning parameters. You can enable Freo Advise after selecting the cleaning mode in the App.




Start cleaning task

You can start the robot for cleaning in the following two ways:



- Tap  **[Start Cleaning]** in the App
- Short press the  **[Start/Stop]** button on the robot and the robot will activate the Vacuum Mode by default;

Note: You can adjust the cleaning mode and set more cleaning parameters in the App.

Pause/resume current task

- You can pause/resume the task in the following two ways:
- Tap  **[Pause]** /  **[Resume]** in the App;
 - Short press the  **[Start/Stop]** button on the robot;

End current task

- The robot will navigate itself back to the base station when cleaning ends. You can view the current cleaning report in the App.
- You can manually end the task in the following two ways:
- Press and hold  **[Finish]** for 2s in the App;
 - Short press the  **Home** **[Recall]** button on the robot;

4. Parameters

4.1 Specifications

Robot	Base station
Dimensions: 350*355*107 mm	Dimensions: 275*118*137 mm
Color: White	Color: White
Weight: ~4.25kg	Weight: ~0.86kg
Wi-Fi	Rated input: 100-240V~
Protocol: IEEE 802.11b/g/n	Rated output: 20V --- 1.8A
Frequency Range: 2412~2462MHz	Rated frequency: 50-60Hz
Max. Transmitter Power (EIRP): ≤22.89dBm	

Bluetooth(Rottbott)
Protocol: BLE 4.2
Frequency Range: 2402-2480MHz
Max. Transmitter Power (EIRP): ≤1.26dBm

Battery (Rotbot)	
Battery Type	Rechargeable Li-ion Battery
Battery Pack Quantity Per Pack	1 pcs
Quantity of Battery Cells Per Battery Pack	8 pcs
Rated Capacity, Rated Energy	5000mAh, 72Wh
Nominal Voltage	14.4V ---

Any Changes or modifications not expressly approved by the party responsible for compliance could void the user's authority to operate the equipment.

This device complies with part 15 of the FCC Rules. Operation is subject to the following two conditions: (1) This device may not cause harmful interference, and (2) this device must accept any interference received, including interference that may cause undesired operation.

Note: This equipment has been tested and found to comply with the limits for a Class B digital device, pursuant to part 15 of the FCC Rules. These limits are designed to provide reasonable protection against harmful interference in a residential installation. This equipment generates, uses and can radiate radio frequency energy and, if not installed and used in accordance with the instructions, may cause harmful interference to radio communications. However, there is no guarantee that interference will not occur in a particular installation. If this equipment does cause harmful interference to radio or television reception, which can be determined by turning the equipment off and on, the user is encouraged to try to correct the interference by one or more of the following measures:

- Reorient or relocate the receiving antenna.
- Increase the separation between the equipment and receiver.
- Connect the equipment into an outlet on a circuit different from that to which the receiver is connected.
- Consult the dealer or an experienced radio/TV technician for help.

This device complies with Innovation, Science, and Economic Development Canada licence-exempt RSS standard(s). Operation is subject to the following two conditions:

- (1) this device may not cause interference, and
- (2) this device must accept any interference, including interference that may cause undesired operation of the device.

Le présent appareil est conforme aux CNR d'Innovation, Sciences et Développement économique Canada applicables aux appareils radio exempts de licence. L'exploitation est autorisée aux deux conditions suivantes :

- (1) l'appareil n' doit pas produire de brouillage, et*
- (2) l'utilisateur de l'appareil doit accepter tout brouillage radioélectrique subi, même si le brouillage est susceptible d'en compromettre le fonctionnement.*

This equipment complies with FCC/ISED radiation exposure limits set forth for an uncontrolled environment. This equipment should be installed and operated with minimum distance 20cm between the radiator& your body.

L'appareil est conforme aux limites d'exposition aux rayonnements spécifiées par la FCC/ISED pour les environnements non contrôlés. La distance entre le radiateur et le corps doit être d'au moins 20 cm lors de l'installation et du fonctionnement de l'appareil.



Manufacturer:Yunjing Intelligence Innovation (Shenzhen) Co., Ltd.

Address:Room A2901, Yunzhongcheng, Building 1, Vanke Yuncheng VI, Dashi 2nd Road,
Xili Community, Xili Street, Nanshan District, Shenzhen, Guangdong, China