



KeyFob LatAm

Document:
Internal Pictures –
KeyFob LatAm

Ver./Rev.: 1.1
DATE:
14/02/2023

Title:


KeyFob LatAm – Internal Pictures

Page

1 / 10

KeyFob LatAm Internal Pictures

- Version 1.1 –

	KeyFob LatAm	Document: Internal Pictures – KeyFob LatAm	Ver./Rev.: 1.1 DATE: 14/02/2023
Title: KeyFob LatAm – Internal Pictures		Page 2 / 10	

Legal Notice

Usage of this document, and all information (including product information) provided within, are subject to the following terms and conditions, and all applicable laws. If you do not agree with these terms, please do not access or use the remainder of this document.

This document contains **highly confidential** information, which is proprietary to ESML SD IBERIA Holding SA. And/or its affiliates (hereafter, “SD”). No part of this document’s contents may be used, copied, disclosed or conveyed to any third party in any manner whatsoever without prior written permission from SD.

The information included in this document is intended for your knowledge and for negotiation purposes only. SD makes no implicit representations or warranties with respect to such information.

The information included in this document is subject to change without notice. Any decision to rely on the information contained herein shall be at your sole responsibility, and SD will not accept any liability for your decision to use any information or for any damages resulting there from.

Certain laws do not allow limitations on implied warranties or the exclusion or limitation of certain damages. If these laws apply to you, some or all of the above disclaimers, exclusions, or limitations may not apply to you.

By using the information contained herein, you agree that the laws of the country of Spain, without regard to principles of conflict of laws, will govern any dispute of any sort that might arise between you and SD regarding the information contained herein, and any such dispute shall be settled exclusively in the competent courts of Madrid, Spain.

All registered or unregistered trademarks, product names, logos and other service marks mentioned within this document are the property of SD, or their respective owners. Nothing contained herein shall be construed as conferring by implication, estoppels, or otherwise any license or right, either express or implied, under any patent or trademark of SD or any third party. No use of any trademark may be made without the prior written authorization of SD.


This document and all of its contents are protected intellectual property of SD. Any copying, reprinting, reuse, reproduction, adaptation, distribution or translation without the prior written permission of SD is prohibited.

© 2022 All rights reserved to ESML SD IBERIA Holding SA.

	KeyFob LatAm	Document: Internal Pictures – KeyFob LatAm	Ver./Rev.: 1.1 DATE: 14/02/2023
Title: KeyFob LatAm – Internal Pictures			Page 3 / 10

REVISION HISTORY

#	Name	Date	Version	Change description
1	Mercedes Franco	23/01/2023	1.0	First Version
2	Mercedes Franco	14/01/2023	1.1	Section 1: Typo corrected Figure 4 updated with antenna location
3				
4				

	<p style="text-align: center;">KeyFob LatAm</p>	<p>Document: Internal Pictures – KeyFob LatAm</p>	<p>Ver./Rev.: 1.1 DATE: 14/02/2023</p>
<p>Title: KeyFob LatAm – Internal Pictures</p>			<p>Page 4 / 10</p>

CONTENT

1. SCOPE..... 6

2. KEYFOB PRODUCT OVERVIEW 7

3. KEYFOB INTERNAL PICTURES 8

FIGURE INDEX


FIGURE 1 KEYFOB..... 7

FIGURE 2 KEYFOB INTERNAL PARTS - 1 8

FIGURE 3 KEYFOB INTERNAL PARTS - 2 9


FIGURE 4 KEYFOB PCB TOP 10

FIGURE 5 KEYFOB PCB BOTTOM..... 10

	<p>KeyFob LatAm</p>	<p>Document: Internal Pictures – KeyFob LatAm</p>	<p>Ver./Rev.: 1.1 DATE: 14/02/2023</p>
<p>Title: KeyFob LatAm – Internal Pictures</p>			<p>Page 5 / 10</p>


ACRONYMS

LATAM Latin America
PCB Printed Circuit Board
VSD Verisure Securitas Direct

	<p>KeyFob LatAm</p>	<p>Document: Internal Pictures – KeyFob LatAm</p>	<p>Ver./Rev.: 1.1 DATE: 14/02/2023</p>
<p>Title: KeyFob LatAm – Internal Pictures</p>		<p>Page 6 / 10</p>	

1. Scope

This document provides internal pictures of the KeyFob LatAm device.

	<p>KeyFob LatAm</p>	<p>Document: Internal Pictures – KeyFob LatAm</p>	<p>Ver./Rev.: 1.1 DATE: 14/02/2023</p>
<p>Title: KeyFob LatAm – Internal Pictures</p>			<p>Page 7 / 10</p>

2. KeyFob Product Overview

KeyFob is an entry/exit device for the Verisure alarm systems. This product allows the user to remotely control the alarm status and also to send a SOS signal to the alarm central unit.



Figure 1 Keyfob

Next sections depict internal pictures of KeyFob.

Title:

KeyFob LatAm – Internal Pictures

Page

8 / 10

3. KeyFob Internal Pictures

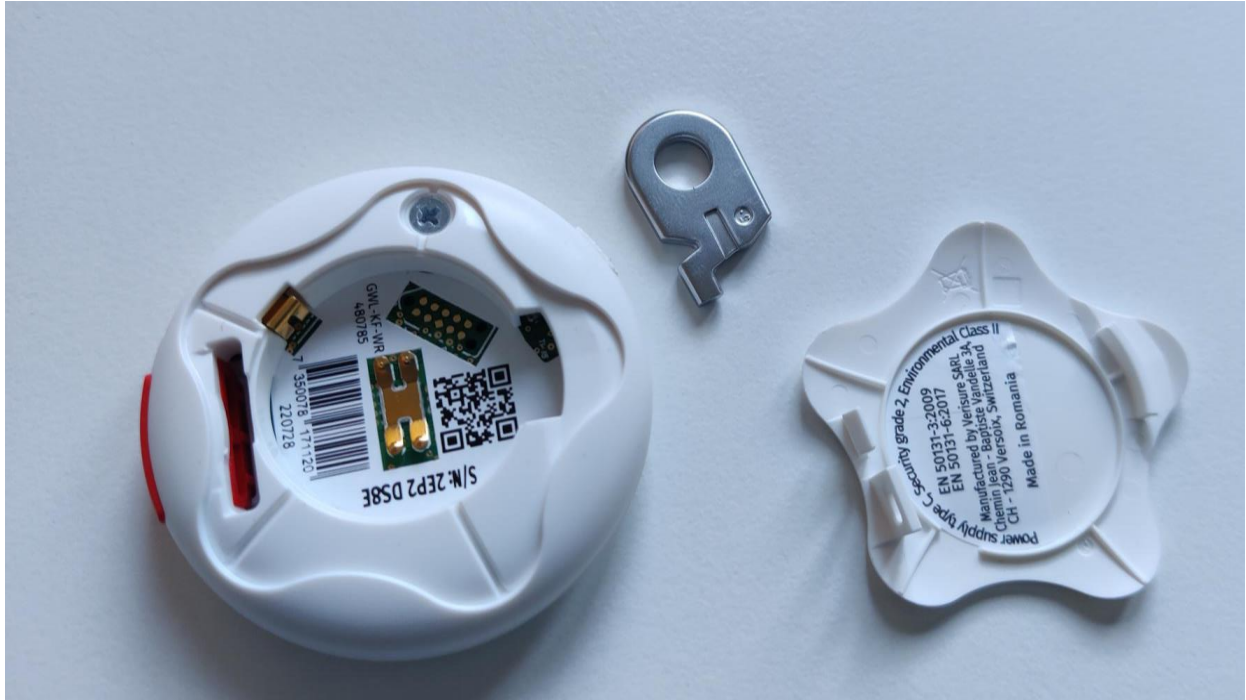


Figure 2 KeyFob Internal Parts - 1

Title:

KeyFob LatAm – Internal Pictures

Page

9 / 10

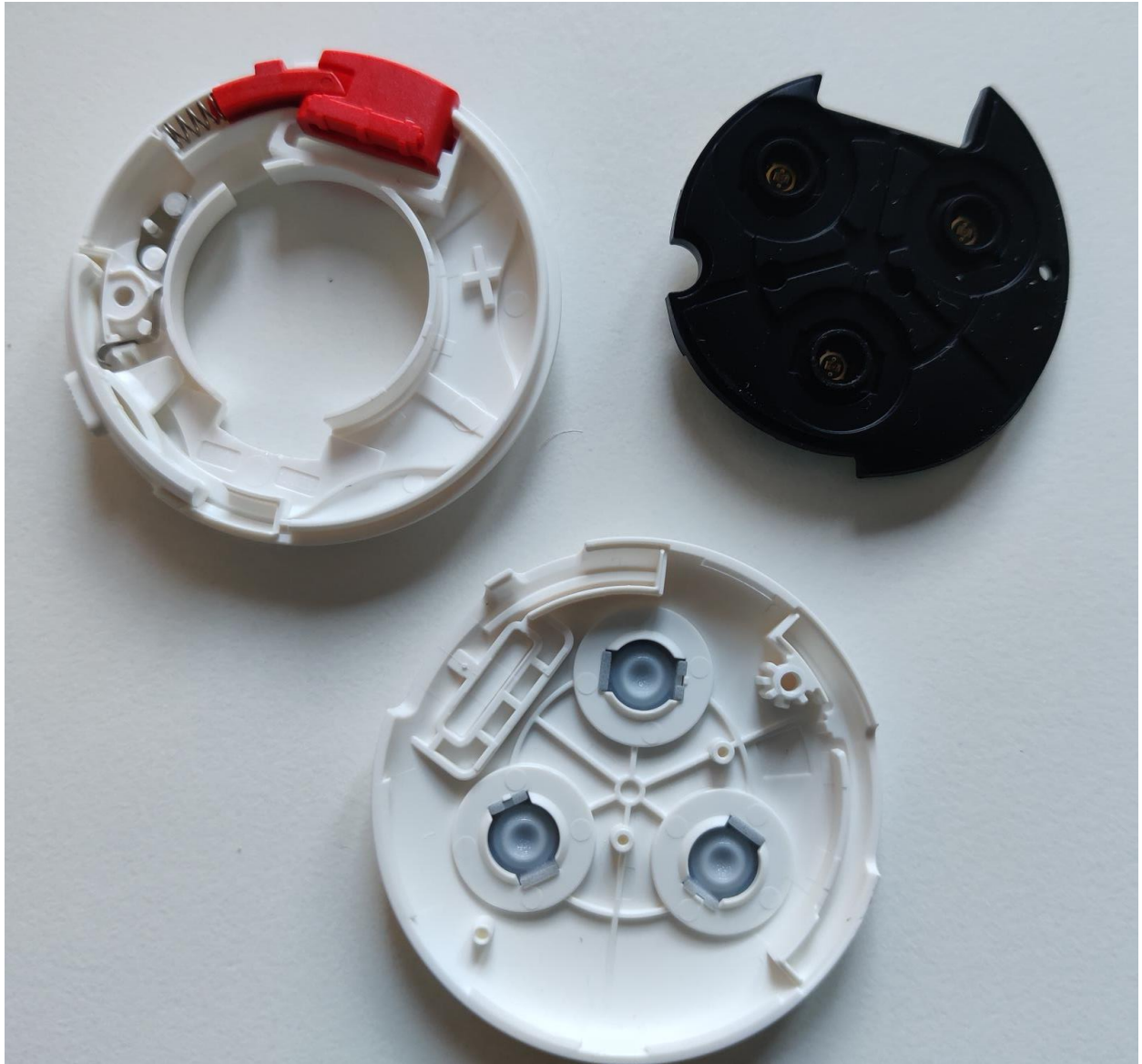


Figure 3 KeyFob Internal Parts - 2

Title:

KeyFob LatAm – Internal Pictures

Page

10 / 10

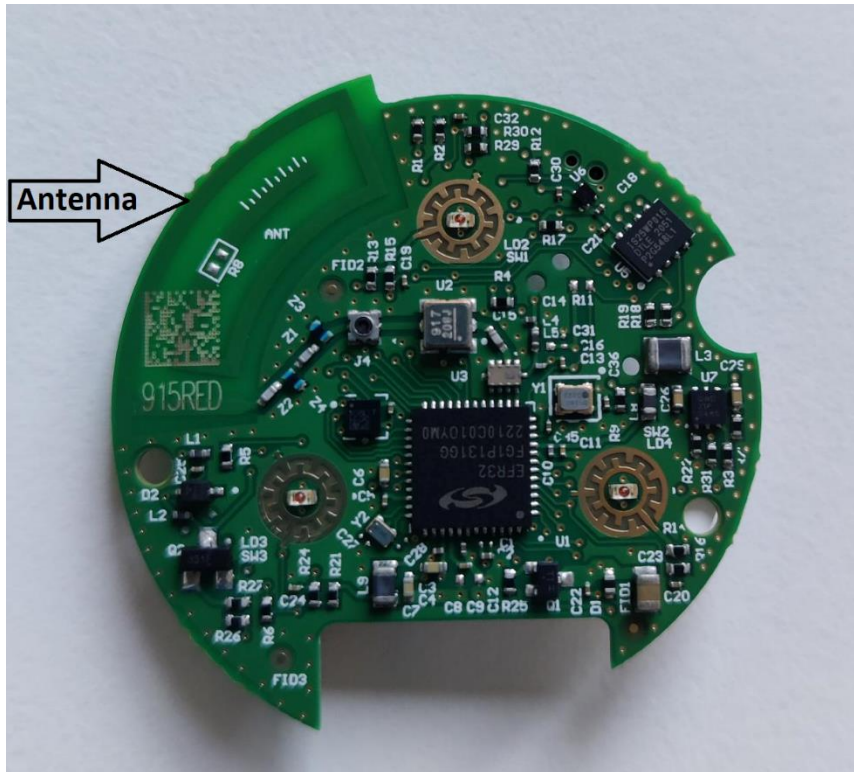


Figure 4 KeyFob PCB top



Figure 5 KeyFob PCB bottom