

## 2. EXTERNAL PHOTOS

Part Number: 550XX-XXX



Figure 7: Front View. LED, On/Off button and RF connector for Antenna 1



Figure 8. Back view. GPS, Power, Ethernet and RF Antenna 2 connectors

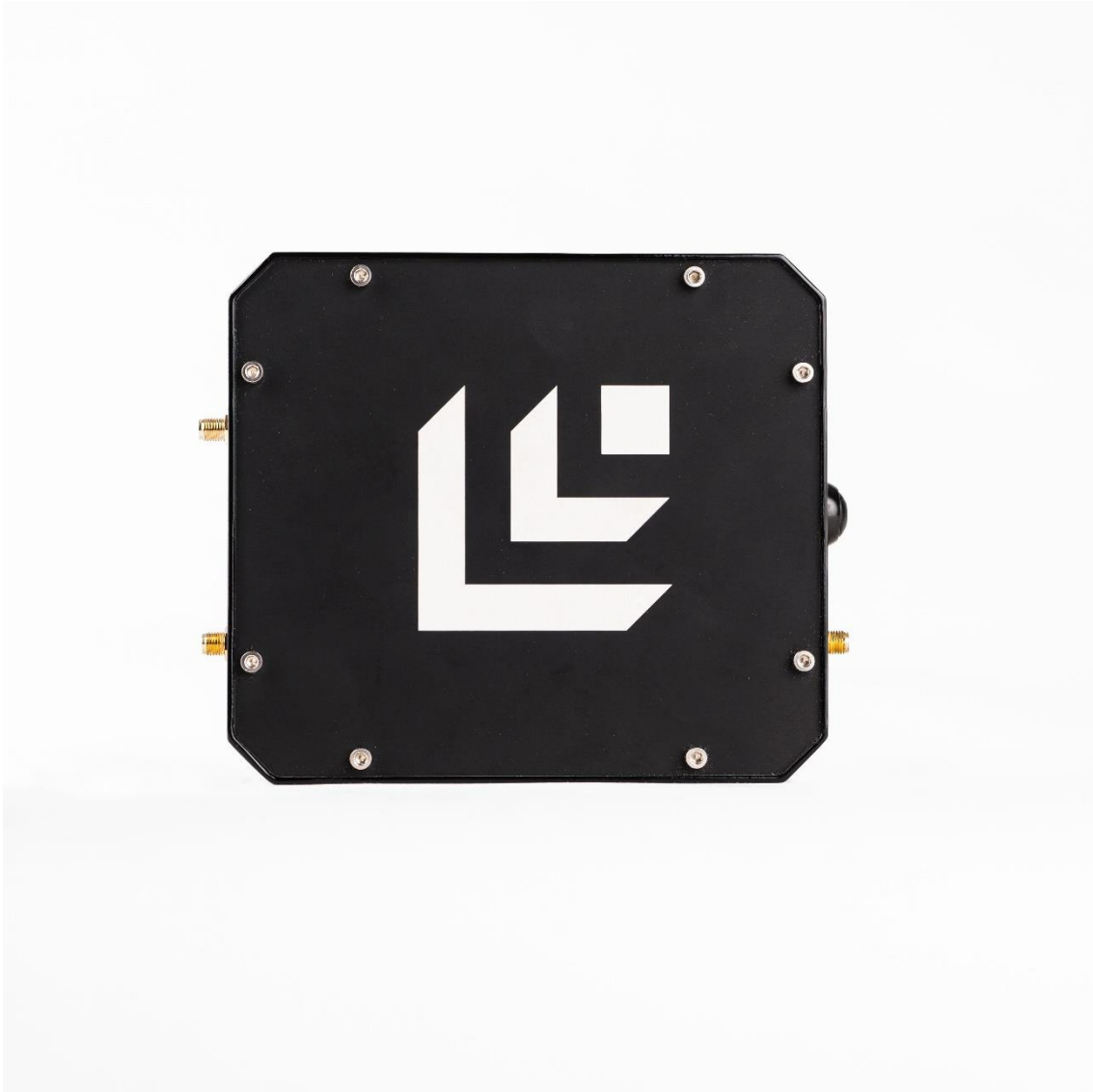


Figure 9. Right Side view



Figure 10. Left side view

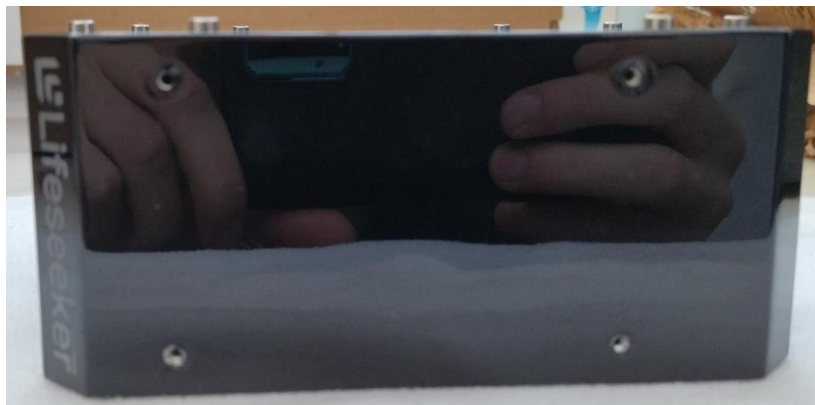


Figure 11. Top side view

	VERSION	1.31
	DATE	21/02/2023
	IDENTIFIER	CRT-Q-LifeseekerMiniS10-Photos
Lifeseeker Mini S10 Photos	PAGE	12 of 12



Figure 12. Bottom side view

## LABEL LOCATION INFORMATION FOR LIFESEEKER MINI S10

**FCC ID: 2A93U-55041-402**

The label in the Product Lifeseeker Mini S10 is located on the bottom part of the chassis, as shown in the following picture:



Figure 1. Bottom part of the product

The following image shows a drawing of the final Label, including the FCC Logo and FCC ID on the product:



Figure 2. Final FCC Label on the product

This label is permanently affixed to the device by laser printing it to the outside of the plastic chassis (bottom part), ensuring its indelibility and the lasting according to the lifetime of the equipment.