



# Shenzhen CTA Testing Technology Co., Ltd.

Room 106, Building 1, Yibaolai Industrial Park, Qiaotou Community, Fuhai Street, Bao'an District, Shenzhen, China

## TEST REPORT

Report Reference No.: CTA24041700513

FCC ID : 2A8ZB-G232

Compiled by  
( position+printed name+signature)...: File administrators Zoey Cao

*Zoey Cao*

Supervised by  
( position+printed name+signature)...: Project Engineer Amy Wen



Approved by  
( position+printed name+signature)...: RF Manager Eric Wang

*Eric Wang*

Date of issue: May. 13, 2024

Testing Laboratory Name : Shenzhen CTA Testing Technology Co., Ltd.  
Address : Room 106, Building 1, Yibaolai Industrial Park, Qiaotou Community, Fuhai Street, Bao'an District, Shenzhen, China

Applicant's name : Shenzhen Weiwo Intelligent Electronics Co., Ltd  
Address : Floor 2, building A7, No. 416, Xuegang North Road, Qinghu community, Longhua street, Longhua District, Shenzhen, China

Test specification : IEC 62209-2:2010; IEEE 1528:2013; FCC 47 CFR Part 2.1093;  
Standard : ANSI/IEEE C95.1:2005; Reference FCC KDB 447498; KDB 248227; KDB 616217; KDB 941225; KDB 865664

Shenzhen CTA Testing Technology Co., Ltd. All rights reserved.  
This publication may be reproduced in whole or in part for non-commercial purposes as long as the Shenzhen CTA Testing Technology Co., Ltd. is acknowledged as copyright owner and source of the material. Shenzhen CTA Testing Technology Co., Ltd. takes no responsibility for and will not assume liability for damages resulting from the reader's interpretation of the reproduced material due to its placement and context.

Test item description: 4G smartwatch  
Trade Mark : N/A  
Manufacturer : Shenzhen Weiwo Intelligent Electronics Co., Ltd  
Model/Type reference: G232  
Listed Models : Refer to page 2  
Rating : DC 3.85V From battery and DC 5.0V From external circuit  
Result : PASS

# TEST REPORT

Equipment under Test : 4G smartwatch

Model /Type : G232

Listed Models : G130, G131, G132, G133, G134, G135, G136, G137, G138, G139, G140, G141, G142, G143, G144, G145, G146, G147, G148, G149, G150, G230, G231, G233, G234, G235, G236, G237, G238, G239, G240, G241, G242, G243, G245, G246, G247, G248, G249, G250, G251, G252, G253, G254, G255, G256, G257, G258, G259, G260

Applicant : **Shenzhen Weiwo Intelligent Electronics Co., Ltd**

Address : Floor 2, building A7, No. 416, Xuegang North Road, Qinghu community, Longhua street, Longhua District, Shenzhen, China

Manufacturer : **Shenzhen Weiwo Intelligent Electronics Co., Ltd**

Address : Floor 2, building A7, No. 416, Xuegang North Road, Qinghu community, Longhua street, Longhua District, Shenzhen, China

<b>Test Result:</b>	<b>PASS</b>
---------------------	-------------

The test report merely corresponds to the test sample.

It is not permitted to copy extracts of these test result without the written permission of the test laboratory.

# Contents

1	Statement of Compliance .....	6
2	General Information .....	7
2.1	General Remarks .....	7
2.2	Description of Equipment Under Test (EUT).....	7
2.3	Device Category and SAR Limits .....	8
2.4	Applied Standard .....	8
2.5	Test Facility.....	9
2.6	Environment of Test Site.....	9
2.7	Test Configuration.....	9
3	Specific Absorption Rate (SAR).....	10
3.1	Introduction.....	10
3.2	SAR Definition .....	10
4	SAR Measurement System.....	11
4.1	E-Field Probe.....	11
4.2	Data Acquisition Electronics (DAE).....	12
4.3	Robot.....	13
4.4	Measurement Server .....	13
4.5	Phantom .....	14
4.6	Device Holder.....	14
4.7	Data Storage and Evaluation.....	15
5	Test Equipment List .....	18
6	Tissue Simulating Liquids .....	19
7	System Verification Procedures.....	21
8	EUT Testing Position .....	23
8.1	Front-of-face and Limbs.....	23
9	Measurement Procedures.....	24
9.1	Spatial Peak SAR Evaluation .....	24
9.2	Power Reference Measurement.....	24
9.3	Area Scan Procedures .....	25
9.4	Zoom Scan Procedures.....	25
9.5	Volume Scan Procedures .....	27
9.6	Power Drift Monitoring .....	27
10	TEST CONDITIONS AND RESULTS .....	28
10.1	Conducted Power .....	28
10.2	SAR Test Exclusion and Estimated SAR .....	48
10.3	SAR Test Results Summary .....	49
10.4	SAR Measurement Variability .....	54
10.5	Simultaneous Transmission Analysis.....	55
11	Measurement Uncertainty .....	56
Appendix A.	EUT Photos and Test Setup Photos .....	58
Appendix B.	Plots of SAR System Check.....	59

Appendix C. Plots of SAR Test Data ..... 65  
Appendix D. DASY System Calibration Certificate ..... 76

### Version

Version No.	Date	Description
R00	May. 13, 2024	Original

# 1 Statement of Compliance

## <Highest SAR Summary>

This device is in compliance with Specific Absorption Rate (SAR) for general population/uncontrolled exposure limits (1.6 W/kg) specified in FCC 47 CFR part 2 (2.1093) and ANSI/IEEE C95.1-2005, and had been tested in accordance with the measurement methods and procedures specified in IEEE 1528-2013. The maximum results of Specific Absorption Rate (SAR) found during testing are as follows.

## <Highest SAR Summary>

Frequency Band	Highest Reported SAR		Simultaneous Reported SAR (W/Kg)
	Next to mouth SAR <sub>1g</sub> (W/Kg) (10mm)	Wrist-Worn SAR <sub>10g</sub> (W/Kg) (0mm)	
GSM850	0.095	0.521	Next to mouth: 0.435  Wrist-Worn: 2.054
PCS1900	0.203	1.616	
WCDMA Band II	0.280	1.833	
WCDMA Band V	0.241	1.603	
LTE Band 2	0.203	1.415	
LTE Band 4	0.180	1.180	
LTE Band 5	0.204	1.287	
LTE Band 7	0.340	1.142	
LTE Band 17	0.184	1.088	
LTE Band 41/ LTE Band 38	0.147	1.679	
WLAN2.4G	0.095	0.221	
SAR Test Limit (W/Kg)	Next to mouth: 1.60W/Kg    Wrist-Worn: 4W/Kg		
Test Result	PASS		

## 2 General Information

### 2.1 General Remarks

Date of receipt of test sample	:	April 17, 2024
Testing commenced on	:	April 21, 2024
Testing concluded on	:	April 28, 2024

### 2.2 Description of Equipment Under Test (EUT)

Product Name:	4G smartwatch
Model/Type reference:	G232
Power supply:	DC 3.85V From battery and DC 5.0V From external circuit
Testing sample ID:	CTA240417005-1# (Engineer sample) CTA240417005-2# (Normal sample)
Hardware version:	C16_V1.5
Software version:	G232_32_EN_V2.5_20240403
Tx Frequency:	SRD: BT:2402~2480MHz 2.4G WIFI: 2412~2462MHz GSM: GSM850 TX: 824.2~848.8MHz PCS1900 TX: 1850.2~1909.8MHz WCDMA: Band 2: TX: 1852.4~1907.6MHz Band 5: TX: 826.40~846.60MHz LTE: FDD Band 2: TX: 1850~1910MHz FDD Band 4: TX: 1710~1755MHz FDD Band 5: TX: 824~849MHz FDD Band 7: TX: 2500~2570MHz FDD Band 17 TX: 704~716MHz TDD Band 38: TX: 2570~2620 MHz TDD Band 41: TX: 2535-2655MHz
Type of Modulation:	BT: GFSK, $\pi/4$ DQPSK, 8DPSK 2.4G WIFI: BPSK, QPSK, 16QAM, 64QAM GSM: GMSK WCDMA: QPSK, 16QAM LTE: QPSK, 16QAM
Category of device:	Portable device
<b>Remark:</b>	The above DUT's information was declared by manufacturer. Please refer to the specifications or user's manual for more detailed description.



### 2.3 Device Category and SAR Limits

This device belongs to portable device category because its radiating structure is allowed to be used within 20 centimeters of the body of the user. Limit for General Population/Uncontrolled exposure should be applied for this device, it is 1.6 W/kg as averaged over any 1 gram of tissue.

### 2.4 Applied Standard

The Specific Absorption Rate (SAR) testing specification, method, and procedure for this device is in accordance with the following standards:

- FCC 47 CFR Part 2 (2.1093:2013)
- ANSI/IEEE C95.1:2005
- IEEE Std 1528:2013
- KDB 865664 D01 SAR Measurement 100 MHz to 6 GHz v01r04
- KDB 865664 D02 RF Exposure Reporting v01r02
- KDB 447498 D01 General RF Exposure Guidance v06
- KDB 248227 D01 802.11 Wi-Fi SAR v02r02
- KDB 941225 D01 3G SAR Procedures v03r01
- KDB 648474 D04 Handset SAR v01r03



## 2.5 Test Facility

**FCC-Registration No.: 517856      Designation Number: CN1318**

Shenzhen CTA Testing Technology Co., Ltd. has been listed on the US Federal Communications Commission list of test facilities recognized to perform electromagnetic emissions measurements.

**A2LA-Lab Cert. No.: 6534.01**

Shenzhen CTA Testing Technology Co., Ltd. has been listed by American Association for Laboratory Accreditation to perform electromagnetic emission measurement.

**ISED#: 27890      CAB identifier: CN0127**

Shenzhen CTA Testing Technology Co., Ltd. has been listed by Innovation, Science and Economic Development Canada to perform electromagnetic emission measurement.

The 3m-Semi anechoic test site fulfils CISPR 16-1-4 according to ANSI C63.10 and CISPR 16-1-4:2010.

## 2.6 Environment of Test Site

Items	Required	Actual
Temperature (°C)	18-25	22~23
Humidity (%RH)	30-70	55~65

## 2.7 Test Configuration

The device was controlled by using a base station emulator. Communication between the device and the emulator was established by air link. The distance between the EUT and the antenna of the emulator is larger than 50 cm and the output power radiated from the emulator antenna is at least 30 dB smaller than the output power of EUT. The EUT was set from the emulator to radiate maximum output power during all tests. For WLAN SAR testing, WLAN engineering testing software installed on the EUT can provide continuous transmitting RF signal.

### 3 Specific Absorption Rate (SAR)

#### 3.1 Introduction

SAR is related to the rate at which energy is absorbed per unit mass in an object exposed to a radio field. The SAR distribution in a biological body is complicated and is usually carried out by experimental techniques or numerical modeling. The standard recommends limits for two tiers of groups, occupational/controlled and general population/uncontrolled, based on a person's awareness and ability to exercise control over his or her exposure. In general, occupational/controlled exposure limits are higher than the limits for general population/uncontrolled.

#### 3.2 SAR Definition

The SAR definition is the time derivative (rate) of the incremental energy (dW) absorbed by (dissipated in) an incremental mass (dm) contained in a volume element (dv) of a given density (ρ). The equation description is as below:

$$\text{SAR} = \frac{d}{dt} \left( \frac{dW}{dm} \right) = \frac{d}{dt} \left( \frac{dW}{\rho dv} \right)$$

SAR is expressed in units of Watts per kilogram (W/kg)

SAR measurement can be either related to the temperature elevation in tissue by

$$\text{SAR} = c \left( \frac{\delta T}{\delta t} \right)$$

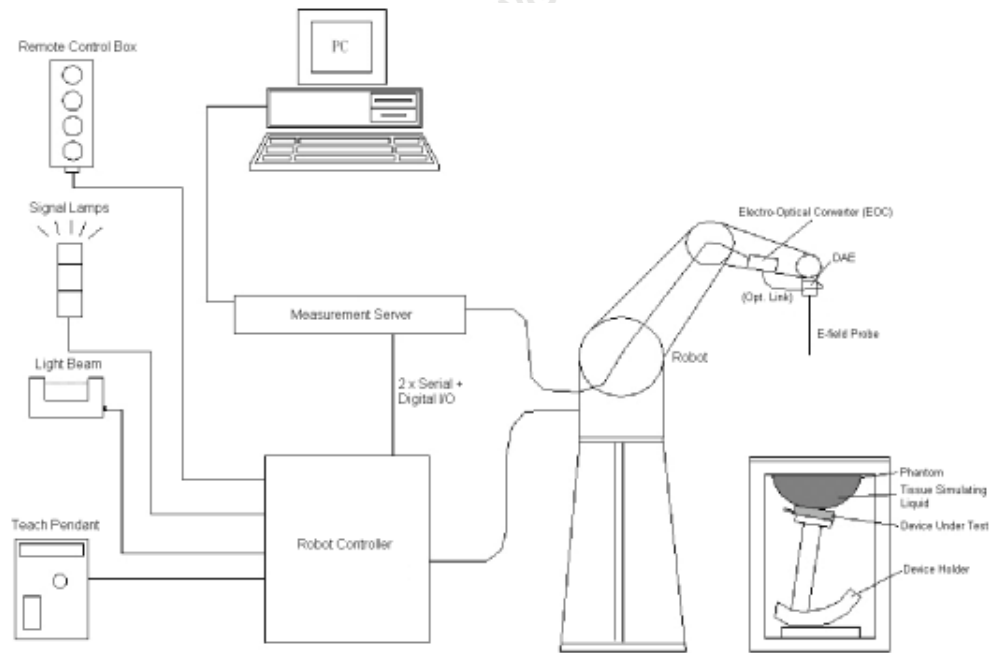
Where: C is the specific heat capacity, δT is the temperature rise and δt is the exposure duration, or related to the electrical field in the tissue by

$$\text{SAR} = \frac{\sigma |E|^2}{\rho}$$

Where: σ is the conductivity of the tissue, ρ is the mass density of the tissue and E is the RMS electrical field strength.

However, for evaluating SAR of low power transmitter, electrical field measurement is typically applied.

## 4 SAR Measurement System



### DASY System Configurations

The DASY system for performance compliance tests is illustrated above graphically. This system consists of the following items:

- A standard high precision 6-axis robot with controller, a teach pendant and software
- A data acquisition electronic (DAE) attached to the robot arm extension
- A dosimetric probe equipped with an optical surface detector system
- The electro-optical converter (EOC) performs the conversion between optical and electrical signals
- A measurement server performs the time critical tasks such as signal filtering, control of the robot operation and fast movement interrupts.
- A probe alignment unit which improves the accuracy of the probe positioning
- A computer operating Windows XP
- DASY software
- Remote control with teach pendant and additional circuitry for robot safety such as warning lamps, etc.
- The SAM twin phantom
- A device holder
- Tissue simulating liquid
- Dipole for evaluating the proper functioning of the system

components are described in details in the following sub-sections.

#### 4.1 E-Field Probe

The SAR measurement is conducted with the dosimetric probe (manufactured by SPEAG). The probe is specially designed and calibrated for use in liquid with high permittivity. The dosimetric probe has special calibration in liquid at different frequency. This probe has a built in optical surface

detection system to prevent from collision with phantom.

### ➤ E-Field Probe Specification

#### <EX3DV4 Probe>

<b>Construction</b>	Symmetrical design with triangular core Built-in shielding against static charges PEEK enclosure material (resistant to organic solvents, e.g., DGBE)
<b>Frequency</b>	10 MHz to 6 GHz; Linearity: $\pm 0.2$ dB
<b>Directivity</b>	$\pm 0.3$ dB in HSL (rotation around probe axis) $\pm 0.5$ dB in tissue material (rotation normal to probe axis)
<b>Dynamic Range</b>	10 $\mu$ W/g to 100 W/kg; Linearity: $\pm 0.2$ dB (noise: typically < 1 $\mu$ W/g)
<b>Dimensions</b>	Overall length: 330 mm (Tip: 20 mm) Tip diameter: 2.5 mm (Body: 12 mm) Typical distance from probe tip to dipole centers: 1 mm



Photo of EX3DV4

### ➤ E-Field Probe Calibration

Each probe needs to be calibrated according to a dosimetric assessment procedure with accuracy better than  $\pm 10\%$ . The spherical isotropy shall be evaluated and within  $\pm 0.25$ dB. The sensitivity parameters (NormX, NormY, and NormZ), the diode compression parameter (DCP) and the conversion factor (ConvF) of the probe are tested. The calibration data can be referred to appendix C of this report.

## 4.2 Data Acquisition Electronics (DAE)

The data acquisition electronics (DAE) consists of a highly sensitive electrometer-grade preamplifier with auto-zeroing, a channel and gain-switching multiplexer, a fast 16 bit AD-converter and a command decoder and control logic unit. Transmission to the measurement server is accomplished through an optical downlink for data and status information as well as an optical uplink for commands and the clock.

The input impedance of the DAE is 200M $\Omega$ ; the inputs are symmetrical and floating. Common mode rejection is above 80dB.



Photo of DAE

### 4.3 Robot

The SPEAG DASY system uses the high precision robots (DASY5: TX60XL) type from Stäubli SA (France). For the 6-axis controllersystem, the robot controller version (DASY5: CS8c) from Stäubli is used. The Stäublirobot series have many features that are important for our application:

- High precision (repeatability  $\pm 0.035$  mm)
- High reliability (industrial design)
- Jerk-free straight movements
- Low ELF interference (the closed metallic construction shields against motor control fields)



**Photo of DASY5**

### 4.4 Measurement Server

The measurement server is based on a PC/104 CPU board with CPU (DASY5: 400 MHz, Intel Celeron), chipdisk (DASY5: 128 MB), RAM (DASY5: 128 MB). The necessary circuits for communication with the DAE electronic box, as well as the 16 bit AD converter system for optical detection and digital I/O interface are contained on the DASY I/O board, which is directly connected to the PC/104 bus of the CPU board.

The measurement server performs all the real-time data evaluation for field measurements and surface detection, controls robot movements and handles safety operations.

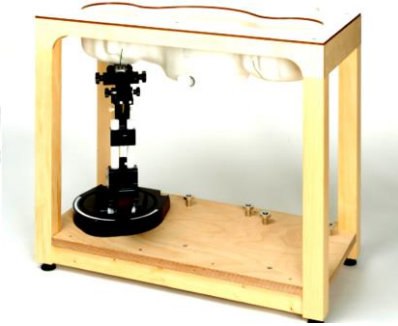


**Photo of Server for DASY5**



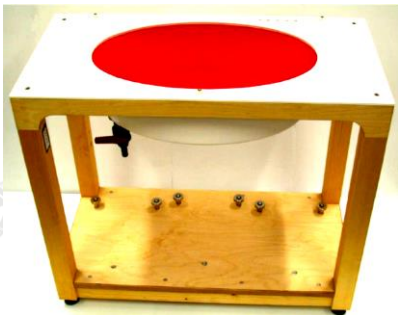
## 4.5 Phantom

### <SAM Twin Phantom>

<b>Shell Thickness</b>	2 ± 0.2 mm; Center ear point: 6 ± 0.2 mm	 <p><b>Photo of SAM Phantom</b></p>
<b>Filling Volume</b>	Approx. 25 liters	
<b>Dimensions</b>	Length: 1000 mm; Width: 500 mm; Height: adjustable feet	
<b>Measurement Areas</b>	Left Hand, Right Hand, Flat Phantom	

The bottom plate contains three pair of bolts for locking the device holder. The device holder positions are adjusted to the standard measurement positions in the three sections. A white cover is provided to tap the phantom during off-periods to prevent water evaporation and changes in the liquid parameters. On the phantom top, three reference markers are provided to identify the phantom position with respect to the robot.

### <ELI4 Phantom>

<b>Shell Thickness</b>	2 ± 0.2 mm (sagging: <1%)	 <p><b>Photo of ELI4 Phantom</b></p>
<b>Filling Volume</b>	Approx. 30 liters	
<b>Dimensions</b>	Major ellipse axis: 600 mm Minor axis: 400 mm	

The ELI4 phantom is intended for compliance testing of handheld and body-mounted wireless devices in the frequency range of 30 MHz to 6 GHz. ELI4 is fully compatible with standard and all known tissue simulating liquids.

## 4.6 Device Holder

The SAR in the phantom is approximately inversely proportional to the square of the distance between the source and the liquid surface. For a source at 5 mm distance, a positioning uncertainty of ±0.5mm would produce a SAR uncertainty of ± 20%. Accurate device positioning is therefore crucial for accurate and repeatable measurements. The positions in which the devices must be measured are defined by the standards.

The DASY device holder is designed to cope with different positions given in the standard. It has two scales for the device rotation (with respect to the body axis) and the device inclination (with respect to the line between the ear reference points). The rotation center for both scales is the ear reference point

(ERP). Thus the device needs no repositioning when changing the angles.

The DASY device holder is constructed of low-loss POM material having the following dielectric parameters: relative permittivity  $\epsilon = 3$  and loss tangent  $\delta = 0.02$ . The amount of dielectric material has been reduced in the closest vicinity of the device, since measurements have suggested that the influence of the clamp on the test results could thus be lowered.



**Device Holder**

#### **4.7 Data Storage and Evaluation**

##### ➤ Data Storage

The DASY software stores the assessed data from the data acquisition electronics as raw data (in microvolt readings from the probe sensors), together with all the necessary software parameters for the data evaluation (probe calibration data, liquid parameters and device frequency and modulation data) in measurement files. The post-processing software evaluates the desired unit and format for output each time the data is visualized or exported. This allows verification of the complete software setup even after the measurement and allows correction of erroneous parameter settings. For example, if a measurement has been performed with an incorrect crest factor parameter in the device setup, the parameter can be corrected afterwards and the data can be reevaluated.

The measured data can be visualized or exported in different units or formats, depending on the selected probe type (e.g., [V/m], [A/m], [W/kg]). Some of these units are not available in certain situations or give meaningless results, e.g., a SAR-output in a non-lose media, will always be zero. Raw data can also be exported to perform the evaluation with other software packages.

##### ➤ Data Evaluation

The DASY post-processing software (SEMCAD) automatically executes the following procedures to calculate the field units from the microvolt readings at the probe connector. The parameters used in the evaluation are stored in the configuration modules of the software:



<b>Probe parameters:</b>	- Sensitivity	Norm <sub>i</sub> , a <sub>i0</sub> , a <sub>i1</sub> , a <sub>i2</sub>
	- Conversion factor	ConvF <sub>i</sub>
	- Diode compression point	dcp <sub>i</sub>
<b>Device parameters:</b>	- Frequency	f
	- Crest factor	cf
<b>Media parameters:</b>	- Conductivity	σ
	- Density	ρ

These parameters must be set correctly in the software. They can be found in the component documents or they can be imported into the software from the configuration files issued for the DASYS components. In the direct measuring mode of the multi-meter option, the parameters of the actual system setup are used. In the scan visualization and export modes, the parameters stored in the corresponding document files are used.

The first step of the evaluation is a linearization of the filtered input signal to account for the compression characteristics of the detector diode. The compensation depends on the input signal, the diode type and the DC-transmission factor from the diode to the evaluation electronics. If the exciting field is pulsed, the crest factor of the signal must be known to correctly compensate for peak power.

The formula for each channel can be given as:

$$V_i = U_i + U_i^2 \cdot \frac{cf}{dcp_i}$$

with  $V_i$  = compensated signal of channel  $i$ , ( $i = x, y, z$ )

$U_i$  = input signal of channel  $i$ , ( $i = x, y, z$ )

cf = crest factor of exciting field (DASY parameter)

dcp <sub>$i$</sub>  = diode compression point (DASY parameter)

From the compensated input signals, the primary field data for each channel can be evaluated:

$$\text{E-field Probes: } E_i = \sqrt{\frac{V_i}{\text{Norm}_i \cdot \text{ConvF}}}$$

$$\text{H-field Probes: } H_i = \sqrt{V_i} \cdot \frac{a_{i0} + a_{i1}f + a_{i2}f^2}{f}$$

with  $V_i$  = compensated signal of channel  $i$ , ( $i = x, y, z$ )

Norm <sub>$i$</sub>  = sensor sensitivity of channel  $i$ , ( $i = x, y, z$ ),  $\mu\text{V}/(\text{V/m})^2$  for E-field Probes

ConvF = sensitivity enhancement in solution

$a_{ij}$  = sensor sensitivity factors for H-field probes

f = carrier frequency [GHz]

$E_i$  = electric field strength of channel  $i$  in V/m

$H_i$  = magnetic field strength of channel  $i$  in A/m

The RSS value of the field components gives the total field strength (Hermitian magnitude):

$$E_{\text{tot}} = \sqrt{E_x^2 + E_y^2 + E_z^2}$$

The primary field data are used to calculate the derived field units.

$$\text{SAR} = E_{\text{tot}}^2 \cdot \frac{\sigma}{\rho \cdot 1000}$$

with SAR = local specific absorption rate in W/kg

$E_{\text{tot}}$  = total field strength in V/m

$\sigma$  = conductivity in [mho/m] or [Siemens/m]

$\rho$  = equivalent tissue density in g/cm<sup>3</sup>

Note that the density is set to 1, to account for actual head tissue density rather than the density of the tissue simulating liquid.

## 5 Test Equipment List

Manufacturer	Name of Equipment	Type/Model	Serial Number	Calibration	
				Last Cal.	Due Date
SPEAG	750MHz System Validation Kit	D750V3	1194	Feb. 17,2023	Feb. 16,2026
SPEAG	835MHz System Validation Kit	D835V2	484	Aug. 25,2023	Aug. 24,2026
SPEAG	1800MHz System Validation Kit	D1800V2	2d158	Dec. 17,2021	Dec. 16,2024
SPEAG	1900MHz System Validation Kit	D1900V2	5d002	Aug. 25,2023	Aug. 24,2026
SPEAG	2450MHz System Validation Kit	D2450V2	745	Aug. 28,2023	Aug. 27,2026
SPEAG	2600MHz System Validation Kit	D2600V2	1073	Feb. 17,2023	Feb. 16,2026
Rohde & Schwarz	UNIVERSAL RADIO COMMUNICATION TESTER	CMW500	1201.0002K50-104209-JC	Nov.05, 2023	Nov.04, 2024
SPEAG	Data Acquisition Electronics	DAE3	428	Aug.30,2023	Aug.29,2024
SPEAG	Dosimetric E-Field Probe	EX3DV4	7380	June 21,2023	June 20,2024
Agilent	ENA Series Network Analyzer	E5071C	MY46317418	Oct.25, 2023	Oct.24, 2024
SPEAG	DAK	DAK-3.5	1226	NCR	NCR
SPEAG	SAM Twin Phantom	QD000P40CD	1802	NCR	NCR
SPEAG	ELI Phantom	QDOVA004AA	2058	NCR	NCR
AR	Amplifier	ZHL-42W	QA1118004	NCR	NCR
Agilent	Power Meter	N1914A	MY50001102	Oct.25, 2023	Oct.24, 2024
Agilent	Power Sensor	N8481H	MY51240001	Oct.25, 2023	Oct.24, 2024
R&S	Spectrum Analyzer	N9020A	MY51170037	Oct.25, 2023	Oct.24, 2024
Agilent	Signal Generation	N5182A	MY48180656	Oct.25, 2023	Oct.24, 2024
Worken	Directional Coupler	0110A05601O-10	COM5BNW1A2	Oct.25, 2023	Oct.24, 2024

### Note:

1. The calibration certificate of DASY can be referred to appendix D of this report.
2. The dipole calibration interval can be extended to 3 years with justification. The dipoles are also not physically damaged, or repaired during the interval.
3. The Insertion Loss calibration of Dual Directional Coupler and Attenuator were characterized via the network analyzer and compensated during system check.
4. The dielectric probe kit was calibrated via the network analyzer, with the specified procedure (calibrated in pure water) and calibration kit (standard) short circuit, before the dielectric measurement. The specific procedure and calibration kit are provided by Agilent.
5. In system check we need to monitor the level on the power meter, and adjust the power amplifier level to have precise power level to the dipole; the measured SAR will be normalized to 1W input power according to the ratio of 1W to the input power to the dipole. For system check, the calibration of the power amplifier is deemed not critically required for correct measurement; the power meter is critical and we do have calibration for it

## 6 Tissue Simulating Liquids

For the measurement of the field distribution inside the SAM phantom with DASY, the phantom must be filled with around 25 liters of homogeneous body tissue simulating liquid. For head SAR testing, the liquid height from the ear reference point (ERP) of the phantom to the liquid top surface is larger than 15 cm, which is shown in Fig. 6.1. For body SAR testing, the liquid height from the center of the flat phantom to the liquid top surface is larger than 15 cm, which is shown as followed:



Photo of Liquid Height for Head SAR

Photo of Liquid Height for Body SAR

The following table gives the recipes for tissue simulating liquid.

Frequency (MHz)	Water (%)	Sugar (%)	Cellulose (%)	Salt (%)	Preventol (%)	DGBE (%)	Conductivity ( $\sigma$ )	Permittivity ( $\epsilon_r$ )
<b>For Head</b>								
835	40.3	57.9	0.2	1.4	0.2	0	0.90	41.5
1800,1900,2000	55.2	0	0	0.3	0	44.5	1.40	40.0
2450	55.0	0	0	0	0	45.0	1.80	39.2
2600	54.8	0	0	0.1	0	45.1	1.96	39.0
<b>For Body</b>								
835	50.8	48.2	0	0.9	0.1	0	0.97	55.2
1800,1900,2000	70.2	0	0	0.4	0	29.4	1.52	53.3
2450	68.6	0	0	0	0	31.4	1.95	52.7
2600	65.5	0	0	0	0	31.5	2.16	52.5

The following table shows the measuring results for simulating liquid.

Measured Frequency (MHz)	Target Tissue		Measured Tissue				Liquid Temp.	Test Data
	$\epsilon_r$	$\sigma$	$\epsilon_r$	Dev. (%)	$\sigma$	Dev. (%)		
750	41.9	0.89	41.209	-1.65%	0.909	2.14%	22.4	04/21/2024
835	41.5	0.90	41.068	-1.04%	0.883	-1.88%	22.8	04/22/2024
1750	40.1	1.37	38.981	-2.79%	1.369	-0.09%	22.3	04/23/2024
1900	40.0	1.40	39.944	-0.14%	1.398	-0.12%	22.5	04/24/2024
2450	39.2	1.80	38.087	-2.84%	1.833	1.84%	22.7	04/28/2024
2600	39.0	1.96	37.935	-2.73%	1.919	-2.08%	22.4	04/25/2024

## 7 System Verification Procedures

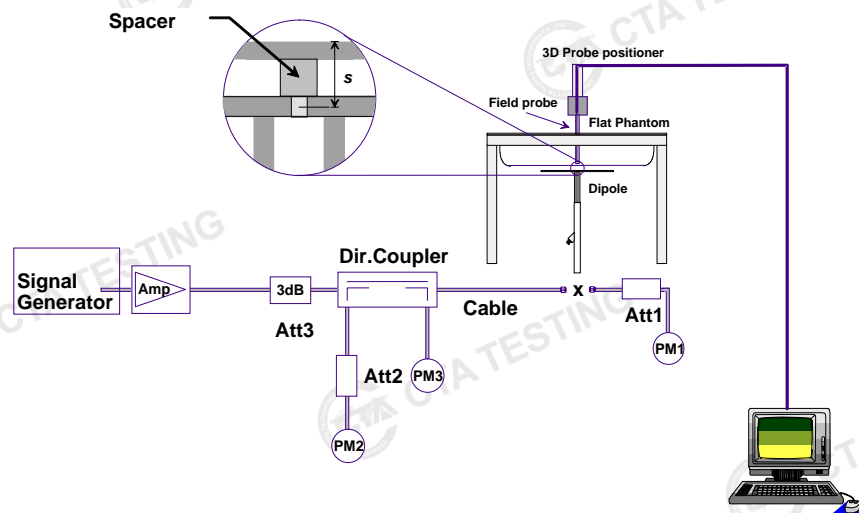
Each DASY system is equipped with one or more system validation kits. These units, together with the predefined measurement procedures within the DASY software, enable the user to conduct the system performance check and system validation. System validation kit includes a dipole, tripod holder to fix it underneath the flat phantom and a corresponding distance holder.

### ➤ Purpose of System Performance check

The system performance check verifies that the system operates within its specifications. System and operator errors can be detected and corrected. It is recommended that the system performance check be performed prior to any usage of the system in order to guarantee reproducible results. The system performance check uses normal SAR measurements in a simplified setup with a well characterized source. This setup was selected to give a high sensitivity to all parameters that might fail or vary over time. The system check does not intend to replace the calibration of the components, but indicates situations where the system uncertainty is exceeded due to drift or failure.

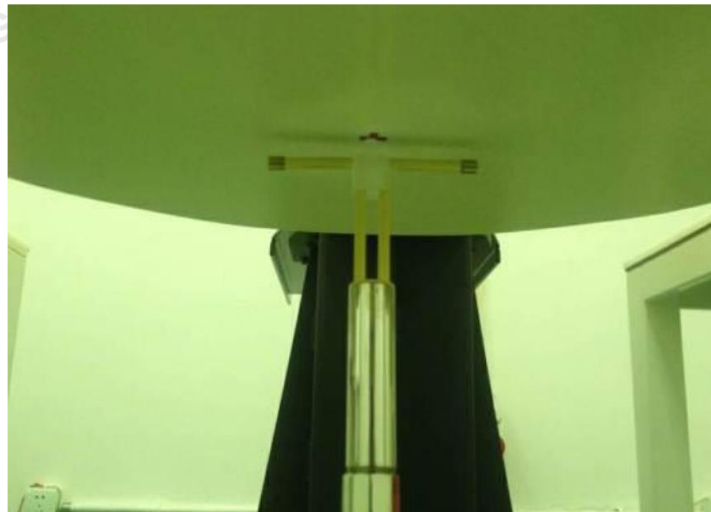
### ➤ System Setup

In the simplified setup for system evaluation, the EUT is replaced by a calibrated dipole and the power source is replaced by a continuous wave that comes from a signal generator. The calibrated dipole must be placed beneath the flat phantom section of the SAM twin phantom with the correct distance holder. The distance holder should touch the phantom surface with a light pressure at the reference marking and be oriented parallel to the long side of the phantom. The equipment setup is shown below:



**System Setup for System Evaluation**





**Photo of Dipole Setup**

➤ **Validation Results**

Comparing to the original SAR value provided by SPEAG, the verification data should be within its specification of 10%. The table below shows the target SAR and measured SAR after normalized to 1W input power. It indicates that the system performance check can meet the variation criterion and the plots can be referred to Appendix B of this report.

Date	Frequency (MHz)	Power fed onto reference dipole (mW)	Targeted SAR 1g (W/kg)	Measured SAR1g (W/kg)	Normalized SAR (W/kg)	Deviation (%)
04/21/2024	750	250	8.57	2.20	8.81	2.80%
04/22/2024	835	250	9.68	2.51	10.04	3.72%
04/23/2024	1750	250	39.2	9.34	37.36	-4.69%
04/24/2024	1900	250	40.1	10.53	42.10	4.99%
04/28/2024	2450	250	52.7	13.56	54.22	2.88%
04/25/2024	2600	250	56.8	14.33	57.32	0.92%

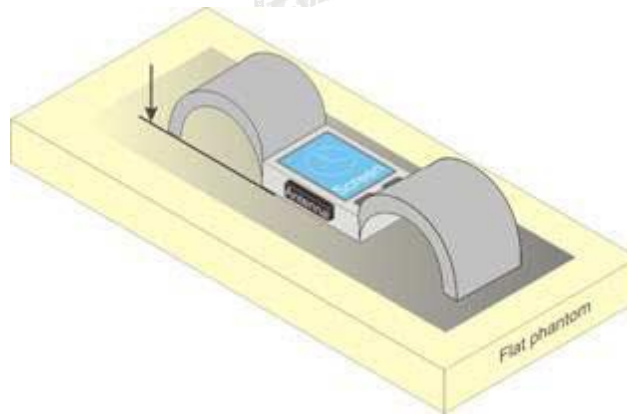
Date	Frequency (MHz)	Power fed onto reference dipole (mW)	Targeted SAR 10g (W/kg)	Measured SAR10g (W/kg)	Normalized SAR (W/kg)	Deviation (%)
04/21/2024	750	250	5.61	1.44	5.77	2.85%
04/22/2024	835	250	6.24	1.59	6.36	1.92%
04/23/2024	1750	250	20.1	4.80	19.18	-4.58%
04/24/2024	1900	250	20.8	5.33	21.32	2.50%
04/28/2024	2450	250	24.5	6.26	25.02	2.12%
04/25/2024	2600	250	25.5	6.15	24.58	-3.61%



## 8 EUT Testing Position

### 8.1 Front-of-face and Limbs

Transmitters that are built-in within a wrist watch or similar wrist-worn devices typically operate in speaker mode for voice communication, with the device worn on the wrist and positioned next to the mouth. Next to the mouth exposure requires 1-g SAR and the wrist-worn condition requires 10-g extremity SAR. The 10-g extremity and 1-g SAR test exclusions may be applied to the wrist and face exposure conditions. When SAR evaluation is required, next to the mouth use is evaluated with the front of the device positioned at 10 mm from a flat phantom filled with head tissue-equivalent medium. The wrist bands should be strapped together to represent normal use conditions. SAR for wrist exposure is evaluated with the back of the device positioned in direct contact against a flat phantom filled with body tissue-equivalent medium. The wrist bands should be unstrapped and touching the phantom.



## 9 Measurement Procedures

The measurement procedures are as follows:

- (a) Use base station simulator (if applicable) or engineering software to transmit RF power continuously (continuous Tx) in the middle channel.
- (b) Keep EUT to radiate maximum output power or 100% duty factor (if applicable)
- (c) Measure output power through RF cable and power meter.
- (d) Place the EUT in the positions as setup photos demonstrates.
- (e) Set scan area, grid size and other setting on the DASY software.
- (f) Measure SAR transmitting at the middle channel for all applicable exposure positions.
- (g) Identify the exposure position and device configuration resulting the highest SAR
- (h) Measure SAR at the lowest and highest channels at the worst exposure position and device configuration if applicable.

According to the test standard, the recommended procedure for assessing the peak spatial-average SAR value consists of the following steps:

- (a) Power reference measurement
- (b) Area scan
- (c) Zoom scan
- (d) Power drift measurement

### 9.1 Spatial Peak SAR Evaluation

The procedure for spatial peak SAR evaluation has been implemented according to the test standard. It can be conducted for 1g and 10g, as well as for user-specific masses. The DASY software includes all numerical procedures necessary to evaluate the spatial peak SAR value.

The base for the evaluation is a "cube" measurement. The measured volume must include the 1g and 10g cubes with the highest averaged SAR values. For that purpose, the center of the measured volume is aligned to the interpolated peak SAR value of a previously performed area scan.

The entire evaluation of the spatial peak values is performed within the post-processing engine (SEMCAD). The system always gives the maximum values for the 1g and 10g cubes. The algorithm to find the cube with highest averaged SAR is divided into the following stages:

- (a) Extraction of the measured data (grid and values) from the Zoom Scan
- (b) Calculation of the SAR value at every measurement point based on all stored data (A/D values and measurement parameters)
- (c) Generation of a high-resolution mesh within the measured volume
- (d) Interpolation of all measured values from the measurement grid to the high-resolution grid
- (e) Extrapolation of the entire 3-D field distribution to the phantom surface over the distance from sensor to surface
- (f) Calculation of the averaged SAR within masses of 1g and 10g

### 9.2 Power Reference Measurement

The Power Reference Measurement and Power Drift Measurements are for monitoring the power drift of the device under test in the batch process. The minimum distance of probe sensors to surface determines the closest measurement point to phantom surface. This distance cannot be smaller

than the distance of sensor calibration points to probe tip as defined in the probe properties.

### 9.3 Area Scan Procedures

The area scan is used as a fast scan in two dimensions to find the area of high field values, before doing a fine measurement around the hot spot. The sophisticated interpolation routines implemented in DASY software can find the maximum found in the scanned area, within a range of the global maximum. The range (in dB) is specified in the standards for compliance testing. For example, a 2 dB range is required in IEEE standard 1528 and IEC 62209 standards, whereby 3 dB is a requirement when compliance is assessed in accordance with the ARIB standard (Japan), if only one zoom scan follows the area scan, then only the absolute maximum will be taken as reference. For cases where multiple maximums are detected, the number of zoom scans has to be increased accordingly.

Area scan parameters extracted from FCC KDB 865664 D01 SAR measurement 100 MHz to 6 GHz.

	≤ 3 GHz	> 3 GHz
Maximum distance from closest measurement point (geometric center of probe sensors) to phantom surface	5 ± 1 mm	$\frac{1}{2} \cdot \delta \cdot \ln(2) \pm 0.5$ mm
Maximum probe angle from probe axis to phantom surface normal at the measurement location	30° ± 1°	20° ± 1°
Maximum area scan spatial resolution: $\Delta x_{Area}$ , $\Delta y_{Area}$	≤ 2 GHz: ≤ 15 mm 2 – 3 GHz: ≤ 12 mm	3 – 4 GHz: ≤ 12 mm 4 – 6 GHz: ≤ 10 mm
	When the x or y dimension of the test device, in the measurement plane orientation, is smaller than the above, the measurement resolution must be ≤ the corresponding x or y dimension of the test device with at least one measurement point on the test device.	

### 9.4 Zoom Scan Procedures

Zoom scans are used to assess the peak spatial SAR values within a cubic averaging volume containing 1 gram and 10gram of simulated tissue. The zoom scan measures points (refer to table below) within a cube whose base faces are centered on the maxima found in a preceding area scan job within the same procedure. When the measurement is done, the zoom scan evaluates the averaged SAR for 1 gram and 10 gram and displays these values next to the job's label.

Zoom scan parameters extracted from FCC KDB 865664 D01 SAR measurement 100 MHz to 6 GHz.

		$\leq 3$ GHz	$> 3$ GHz
Maximum distance from closest measurement point (geometric center of probe sensors) to phantom surface		$5 \text{ mm} \pm 1 \text{ mm}$	$\frac{1}{2} \cdot \delta \cdot \ln(2) \text{ mm} \pm 0.5 \text{ mm}$
Maximum probe angle from probe axis to phantom surface normal at the measurement location		$30^\circ \pm 1^\circ$	$20^\circ \pm 1^\circ$
Maximum area scan spatial resolution: $\Delta x_{\text{Area}}, \Delta y_{\text{Area}}$		$\leq 2$ GHz: $\leq 15 \text{ mm}$ 2 – 3 GHz: $\leq 12 \text{ mm}$	3 – 4 GHz: $\leq 12 \text{ mm}$ 4 – 6 GHz: $\leq 10 \text{ mm}$
		When the x or y dimension of the test device, in the measurement plane orientation, is smaller than the above, the measurement resolution must be $\leq$ the corresponding x or y dimension of the test device with at least one measurement point on the test device.	
Maximum zoom scan spatial resolution: $\Delta x_{\text{Zoom}}, \Delta y_{\text{Zoom}}$		$\leq 2$ GHz: $\leq 8 \text{ mm}$ 2 – 3 GHz: $\leq 5 \text{ mm}^*$	3 – 4 GHz: $\leq 5 \text{ mm}^*$ 4 – 6 GHz: $\leq 4 \text{ mm}^*$
Maximum zoom scan spatial resolution, normal to phantom surface	uniform grid: $\Delta z_{\text{Zoom}}(n)$	$\leq 5 \text{ mm}$	3 – 4 GHz: $\leq 4 \text{ mm}$ 4 – 5 GHz: $\leq 3 \text{ mm}$ 5 – 6 GHz: $\leq 2 \text{ mm}$
	graded grid	$\Delta z_{\text{Zoom}}(1)$ : between 1 <sup>st</sup> two points closest to phantom surface	$\leq 4 \text{ mm}$
		$\Delta z_{\text{Zoom}}(n>1)$ : between subsequent points	$\leq 1.5 \cdot \Delta z_{\text{Zoom}}(n-1) \text{ mm}$
Minimum zoom scan volume	x, y, z	$\geq 30 \text{ mm}$	3 – 4 GHz: $\geq 28 \text{ mm}$ 4 – 5 GHz: $\geq 25 \text{ mm}$ 5 – 6 GHz: $\geq 22 \text{ mm}$
<p>Note: <math>\delta</math> is the penetration depth of a plane-wave at normal incidence to the tissue medium; see IEEE Std 1528-2013 for details.</p> <p>* When zoom scan is required and the <i>reported</i> SAR from the <i>area scan based 1-g SAR estimation</i> procedures of KDB Publication 447498 is <math>\leq 1.4 \text{ W/kg}</math>, <math>\leq 8 \text{ mm}</math>, <math>\leq 7 \text{ mm}</math> and <math>\leq 5 \text{ mm}</math> zoom scan resolution may be applied, respectively, for 2 GHz to 3 GHz, 3 GHz to 4 GHz and 4 GHz to 6 GHz.</p>			

## 9.5 Volume Scan Procedures

The volume scan is used for assess overlapping SAR distributions for antennas transmitting in different frequency bands. It is equivalent to an oversized zoom scan used in standalone measurements. The measurement volume will be used to enclose all the simultaneous transmitting antennas. For antennas transmitting simultaneously in different frequency bands, the volume scan is measured separately in each frequency band. In order to sum correctly to compute the 1g aggregate SAR, the EUT remain in the same test position for all measurements and all volume scan use the same spatial resolution and grid spacing. When all volume scan were completed, the software, SEMCAD postprocessor can combine and subsequently superpose these measurement data to calculating the multiband SAR.

## 9.6 Power Drift Monitoring

All SAR testing is under the EUT install full charged battery and transmit maximum output power. In DASY measurement software, the power reference measurement and power drift measurement procedures are used for monitoring the power drift of EUT during SAR test. Both these procedures measure the field at a specified reference position before and after the SAR testing. The software will calculate the field difference in dB. If the power drift more than 5%, the SAR will be retested.



## 10 TEST CONDITIONS AND RESULTS

### 10.1 Conducted Power

<GSM Conducted power>

Band GSM850		Burst Average Power (dBm)			Frame-Average Power (dBm)		
TX Channel	Tune-up limit (dBm)	128	190	251	128	190	251
Frequency (MHz)		824.2	836.6	848.8	824.2	836.6	848.6
<b>GSM</b>	33.00	32.31	32.35	<b>32.62</b>	23.28	23.32	23.59
<b>GPRS (GMSK, 1 Tx slot)</b>	33.00	32.54	32.63	32.56	23.51	23.60	23.53
<b>GPRS (GMSK, 2 Tx slots)</b>	30.00	29.48	29.58	28.82	23.46	23.56	22.80
<b>GPRS (GMSK, 3 Tx slots)</b>	28.00	27.24	26.91	27.64	22.98	22.65	23.38
<b>GPRS (GMSK, 4 Tx slots)</b>	27.00	26.68	25.75	26.77	23.67	22.74	<b>23.76</b>
Band PCS1900		Burst Average Power (dBm)			Frame-Average Power (dBm)		
TX Channel	Tune-up limit (dBm)	512	661	810	512	661	810
Frequency (MHz)		1850.2	1880.0	1909.8	1850.2	1880.0	1909.8
<b>GSM</b>	31.00	<b>30.65</b>	29.87	29.82	21.62	20.84	20.79
<b>GPRS (GMSK, 1 Tx slot)</b>	31.00	30.55	30.21	29.81	21.52	21.18	20.78
<b>GPRS (GMSK, 2 Tx slots)</b>	28.00	27.24	27.27	26.75	21.22	21.25	20.73
<b>GPRS (GMSK, 3 Tx slots)</b>	26.00	25.83	25.52	25.78	<b>21.57</b>	21.26	21.52
<b>GPRS (GMSK, 4 Tx slots)</b>	25.00	24.31	23.99	23.87	21.30	20.98	20.86

Remark: The frame-averaged power is linearly scaled the maximum burst averaged power over 8 time slots.  
The calculated method are shown as below:  
Frame-averaged power = Maximum burst averaged power (1 Tx Slot) – 9.03 dB  
Frame-averaged power = Maximum burst averaged power (2 Tx Slots) – 6.02 dB  
Frame-averaged power = Maximum burst averaged power (3 Tx Slots) - 4.26 dB  
Frame-averaged power = Maximum burst averaged power (4 Tx Slots) – 3.01 dB

**Note:**

1. Per KDB 447498 D01, the maximum output power channel is used for SAR testing and for further SAR test reduction
2. For Data mode SAR testing, GPRS should be evaluated, therefore the EUT was set in corresponding TX slots due to its highest frame-average power.

**<WCDMA Conducted Power>**

The following tests were conducted according to the test requirements outlines in 3GPP TS 34.121 specification. A summary of these settings is illustrated below:

**HSDPA Setup Configuration:**

- a. The EUT was connected to Base Station Agilent E5515C referred to the Setup Configuration.
- b. The RF path losses were compensated into the measurements.
- c. A call was established between EUT and Base Station with following setting:
  - i. Set Gain Factors ( $\beta_c$  and  $\beta_d$ ) and parameters were set according to each
  - ii. Specific sub-test in the following table, C10.1.4, quoted from the TS 34.121
  - iii. Set RMC 12.2Kbps + HSDPA mode.
  - iv. Set Cell Power = -86 dBm
  - v. Set HS-DSCH Configuration Type to FRC (H-set 1, QPSK)
  - vi. Select HSDPA Uplink Parameters
  - vii. Set Delta ACK, Delta NACK and Delta CQI = 8
  - viii. Set Ack-Nack Repetition Factor to 3
  - ix. Set CQI Feedback Cycle (k) to 4 ms
  - x. Set CQI Repetition Factor to 2
  - xi. Power Ctrl Mode = All Up bits
- d. The transmitted maximum output power was recorded.

**Table C.10.1.4:  $\beta$  values for transmitter characteristics tests with HS-DPCCH**

Sub-test	$\beta_c$	$\beta_d$	$\beta_d$ (SF)	$\beta_c/\beta_d$	$\beta_{hs}$ (Note 1, Note 2)	CM (dB) (Note 3)	MPR (dB) (Note 3)
1	2/15	15/15	64	2/15	4/15	0.0	0.0
2	12/15 (Note 4)	15/15 (Note 4)	64	12/15 (Note 4)	24/15	1.0	0.0
3	15/15	8/15	64	15/8	30/15	1.5	0.5
4	15/15	4/15	64	15/4	30/15	1.5	0.5

Note 1:  $\Delta_{ACK}$ ,  $\Delta_{NACK}$  and  $\Delta_{CQI} = 30/15$  with  $\beta_{hs} = 30/15 * \beta_c$ .

Note 2: For the HS-DPCCH power mask requirement test in clause 5.2C, 5.7A, and the Error Vector Magnitude (EVM) with HS-DPCCH test in clause 5.13.1A, and HSDPA EVM with phase discontinuity in clause 5.13.1AA,  $\Delta_{ACK}$  and  $\Delta_{NACK} = 30/15$  with  $\beta_{hs} = 30/15 * \beta_c$ , and  $\Delta_{CQI} = 24/15$  with  $\beta_{hs} = 24/15 * \beta_c$ .

Note 3: CM = 1 for  $\beta_c/\beta_d = 12/15$ ,  $\beta_{hs}/\beta_c = 24/15$ . For all other combinations of DPCCH, DPDCCH and HS-DPCCH the MPR is based on the relative CM difference. This is applicable for only UEs that support HSDPA in release 6 and later releases.

Note 4: For subtest 2 the  $\beta_c/\beta_d$  ratio of 12/15 for the TFC during the measurement period (TF1, TF0) is achieved by setting the signalled gain factors for the reference TFC (TF1, TF1) to  $\beta_c = 11/15$  and  $\beta_d = 15/15$ .

**Setup Configuration**



**HSUPA Setup Configuration:**

- a. The EUT was connected to Base Station Agilent E5515C referred to the Setup Configuration.
- b. The RF path losses were compensated into the measurements.
- c. A call was established between EUT and Base Station with following setting \* :
  - i. Call Configs = 5.2B, 5.9B, 5.10B, and 5.13.2B with QPSK
  - ii. Set the Gain Factors ( $\beta_c$  and  $\beta_d$ ) and parameters (AG Index) were set according to each specific sub-test in the following table, C11.1.3, quoted from the TS 34.121
  - iii. Set Cell Power = -86 dBm
  - iv. Set Channel Type = 12.2k + HSPA
  - v. Set UE Target Power
  - vi. Power Ctrl Mode= Alternating bits
  - vii. Set and observe the E-TFCI
  - viii. Confirm that E-TFCI is equal to the target E-TFCI of 75 for sub-test 1, and other subtest's E-TFCI
- d. The transmitted maximum output power was recorded.

**Table C.11.1.3:  $\beta$  values for transmitter characteristics tests with HS-DPCCH and E-DCH**

Sub-test	$\beta_c$	$\beta_d$	$\beta_d$ (SF)	$\beta_c/\beta_d$	$\beta_{HS}$ (Note 1)	$\beta_{ec}$	$\beta_{ed}$ (Note 5) (Note 6)	$\beta_{ed}$ (SF)	$\beta_{ed}$ (Codes)	CM (dB) (Note 2)	MPR (dB) (Note 2)	AG Index (Note 6)	E-TFCI
1	11/15 (Note 3)	15/15 (Note 3)	64	11/15 (Note 3)	22/15	209/225	1309/225	4	1	1.0	0.0	20	75
2	6/15	15/15	64	6/15	12/15	12/15	94/75	4	1	3.0	2.0	12	67
3	15/15	9/15	64	15/9	30/15	30/15	$\beta_{ed1}: 47/15$ $\beta_{ed2}: 47/15$	4	2	2.0	1.0	15	92
4	2/15	15/15	64	2/15	4/15	2/15	56/75	4	1	3.0	2.0	17	71
5	15/15 (Note 4)	15/15 (Note 4)	64	15/15 (Note 4)	30/15	24/15	134/15	4	1	1.0	0.0	21	81

Note 1:  $\Delta_{ACK}, \Delta_{NACK}$  and  $\Delta_{CQI} = 30/15$  with  $\beta_{hs} = 30/15 * \beta_c$ .

Note 2: CM = 1 for  $\beta_c/\beta_d = 12/15$ ,  $\beta_{hs}/\beta_c = 24/15$ . For all other combinations of DPDCH, DPCCH, HS-DPCCH, E-DPDCH and E-DPCCH the MPR is based on the relative CM difference.

Note 3: For subtest 1 the  $\beta_c/\beta_d$  ratio of 11/15 for the TFC during the measurement period (TF1, TF0) is achieved by setting the signalled gain factors for the reference TFC (TF1, TF1) to  $\beta_c = 10/15$  and  $\beta_d = 15/15$ .

Note 4: For subtest 5 the  $\beta_c/\beta_d$  ratio of 15/15 for the TFC during the measurement period (TF1, TF0) is achieved by setting the signalled gain factors for the reference TFC (TF1, TF1) to  $\beta_c = 14/15$  and  $\beta_d = 15/15$ .

Note 5: In case of testing by UE using E-DPDCH Physical Layer category 1, Sub-test 3 is omitted according to TS25.306 Table 5.1g.

Note 6:  $\beta_{ed}$  can not be set directly, it is set by Absolute Grant Value.

**Setup Configuration**

## &lt;WCDMA Conducted Power&gt;

WCDMA	Band II (dBm)				Band V (dBm)			
TX Channel	Tune-up limit (dBm)	9262	9400	9538	Tune-up limit (dBm)	4132	4183	4233
Frequency (MHz)		1852.4	1880.0	1907.6		826.4	836.6	846.6
RMC 12.2Kbps	24.00	22.85	<b>23.60</b>	22.78	24.00	23.54	<b>23.61</b>	23.35
RMC AMR	24.00	23.09	23.53	23.27	24.00	23.12	23.78	22.70
HSDPA Subtest-1	23.00	22.16	22.39	22.33	23.00	22.39	22.27	22.13
HSDPA Subtest-2	22.00	21.43	21.44	20.71	22.00	21.16	21.58	21.12
HSDPA Subtest-3	22.00	21.46	21.05	21.76	22.00	21.79	21.59	21.20
HSDPA Subtest-4	21.00	20.78	20.37	20.78	21.00	20.11	20.34	19.91
HSUPA Subtest-1	23.00	22.29	22.29	21.95	23.00	21.89	22.44	22.48
HSUPA Subtest-2	22.00	21.59	21.80	21.71	22.00	20.85	21.39	20.81
HSUPA Subtest-3	22.00	21.29	21.19	21.35	22.00	21.59	21.01	21.62
HSUPA Subtest-4	21.00	19.81	20.73	19.91	21.00	20.59	19.74	20.49
HSUPA Subtest-5	21.50	20.59	20.24	19.98	21.50	20.30	20.33	20.57

**General Note**

- Per KDB 941225 D01 v02, RMC 12.2kbps setting is used to evaluate SAR as primary mode. When the maximum output power and tune-up tolerance specified for production units in a secondary mode is  $\leq \frac{1}{4}$  dB higher than the primary mode or when the highest reported SAR of the primary mode is scaled by the ratio of specified maximum output power and tune-up tolerance of secondary to primary mode and the adjusted SAR is  $\leq 1.2$  W/kg, SAR measurement is not required for the secondary mode.
- It is expected by the manufacturer that MPR for some HSDPA/HSUPA subtests may differ from the specification of 3GPP, according to the chipset implementation in this model. The implementation and expected deviation are detailed in tune-up procedure exhibit.

<LTE Conducted Power>

LTE Band 2							
BW (MHz)	Modulation	RB Size	RB Offset	Channel/Frequency(MHz)			Tune-up limit (dBm)
				18700	18900	19100	
				1860	1880	1900	
20	QPSK	1	0	23.60	23.70	23.67	24
20	QPSK	1	49	23.39	<b>23.80</b>	23.69	
20	QPSK	1	99	23.34	23.62	23.68	
20	QPSK	50	0	22.33	<b>22.36</b>	22.33	23
20	QPSK	50	24	22.20	22.10	22.05	
20	QPSK	50	50	22.08	22.25	22.35	
20	QPSK	100	0	<b>22.40</b>	22.38	22.21	23
20	16QAM	1	0	22.01	22.10	22.13	23
20	16QAM	1	49	22.26	22.11	22.38	
20	16QAM	1	99	22.39	<b>22.45</b>	22.04	
20	16QAM	50	0	21.40	21.44	21.47	22
20	16QAM	50	24	<b>21.51</b>	21.48	21.25	
20	16QAM	50	50	21.40	21.40	21.42	
20	16QAM	100	0	<b>21.48</b>	21.23	21.41	22
BW (MHz)	Modulation	RB Size	RB Offset	Channel/Frequency(MHz)			Tune-up limit (dBm)
				18675	18900	19125	
				1857.5	1880	1902.5	
15	QPSK	1	0	23.39	23.84	23.03	24
15	QPSK	1	37	23.66	<b>23.93</b>	23.63	
15	QPSK	1	74	23.33	23.64	23.15	
15	QPSK	36	0	22.42	22.26	22.33	23
15	QPSK	36	20	22.26	22.16	22.13	
15	QPSK	36	39	22.06	22.10	<b>22.43</b>	
15	QPSK	75	0	22.17	<b>22.39</b>	22.06	23
15	16QAM	1	0	22.20	22.11	22.22	23
15	16QAM	1	37	22.41	22.07	22.14	
15	16QAM	1	74	22.23	<b>22.42</b>	22.12	
15	16QAM	36	0	21.17	21.35	21.40	22
15	16QAM	36	20	21.29	<b>21.47</b>	21.41	
15	16QAM	36	39	21.18	21.20	21.40	
15	16QAM	75	0	21.26	21.19	<b>21.37</b>	22

BW (MHz)	Modulation	RB Size	RB Offset	Channel/Frequency(MHz)			Tune-up limit (dBm)
				18650	18900	19150	
				1855	1880	1905	
10	QPSK	1	0	<b>23.92</b>	23.55	23.14	24
10	QPSK	1	25	23.10	23.74	23.21	
10	QPSK	1	49	23.81	23.91	23.87	
10	QPSK	25	0	22.04	22.14	<b>22.35</b>	23
10	QPSK	25	12	22.12	22.08	22.06	
10	QPSK	25	25	22.22	22.27	22.24	
10	QPSK	50	0	22.37	<b>22.39</b>	22.35	23
10	16QAM	1	0	22.07	22.43	<b>22.45</b>	23
10	16QAM	1	25	22.04	22.31	22.34	
10	16QAM	1	49	22.31	22.19	22.37	
10	16QAM	25	0	21.49	21.40	21.30	22
10	16QAM	25	12	21.40	<b>21.52</b>	21.48	
10	16QAM	25	25	21.51	21.43	21.39	
10	16QAM	50	0	<b>21.46</b>	21.42	21.21	22
BW (MHz)	Modulation	RB Size	RB Offset	Channel/Frequency(MHz)			Tune-up limit (dBm)
				18625	18900	19175	
				1852.5	1880	1907.5	
5	QPSK	1	0	23.64	23.51	23.53	24
5	QPSK	1	12	23.14	23.15	23.37	
5	QPSK	1	24	23.35	23.08	<b>23.67</b>	
5	QPSK	12	0	22.05	22.38	22.17	23
5	QPSK	12	7	22.32	<b>22.45</b>	22.04	
5	QPSK	12	13	22.36	22.12	22.06	
5	QPSK	25	0	22.11	<b>22.24</b>	22.16	23
5	16QAM	1	0	22.20	22.27	22.24	23
5	16QAM	1	12	22.14	22.03	22.05	
5	16QAM	1	24	22.26	22.19	<b>22.43</b>	
5	16QAM	12	0	21.45	21.38	21.40	22
5	16QAM	12	7	21.35	21.17	<b>21.48</b>	
5	16QAM	12	13	21.24	21.15	21.17	
5	16QAM	25	0	21.20	<b>21.45</b>	21.42	22

BW (MHz)	Modulation	RB Size	RB Offset	Channel/Frequency(MHz)			Tune-up limit (dBm)
				18615	18900	19185	
				1851.5	1880	1908.5	
3	QPSK	1	0	23.47	23.58	23.12	24
3	QPSK	1	8	23.79	23.78	23.22	
3	QPSK	1	14	23.89	23.84	<b>23.95</b>	
3	QPSK	8	0	22.28	<b>22.43</b>	22.42	23
3	QPSK	8	4	22.30	22.09	22.31	23
3	QPSK	8	7	<b>22.43</b>	22.24	<b>22.43</b>	
3	QPSK	15	0	22.07	22.15	<b>22.40</b>	
3	16QAM	1	0	22.10	22.02	22.06	23
3	16QAM	1	8	22.38	22.24	22.10	
3	16QAM	1	14	22.19	<b>22.39</b>	22.20	
3	16QAM	8	0	21.30	21.28	21.18	22
3	16QAM	8	4	21.16	21.29	<b>21.44</b>	
3	16QAM	8	7	21.20	21.42	21.31	
3	16QAM	15	0	21.42	<b>21.49</b>	21.30	22
BW (MHz)	Modulation	RB Size	RB Offset	Channel/Frequency(MHz)			Tune-up limit (dBm)
				18607	18900	19193	
				1850.7	1880	1909.3	
1.4	QPSK	1	0	23.53	23.73	23.47	24
1.4	QPSK	1	3	<b>23.92</b>	23.61	23.32	
1.4	QPSK	1	5	23.69	23.74	23.50	
1.4	QPSK	3	0	22.05	22.07	<b>22.42</b>	23
1.4	QPSK	3	1	22.08	22.04	22.13	
1.4	QPSK	3	3	22.33	22.23	22.24	
1.4	QPSK	6	0	22.04	22.25	<b>22.41</b>	23
1.4	16QAM	1	0	22.30	22.33	22.05	23
1.4	16QAM	1	3	22.12	<b>22.45</b>	22.14	
1.4	16QAM	1	5	22.13	22.23	22.21	
1.4	16QAM	3	0	21.19	21.39	21.44	22
1.4	16QAM	3	1	21.37	<b>21.53</b>	21.41	
1.4	16QAM	3	3	21.22	21.42	21.26	
1.4	16QAM	6	0	21.41	21.29	<b>21.48</b>	22

LTE Band 4							
BW (MHz)	Modulation	RB Size	RB Offset	Channel/Frequency(MHz)			Tune-up limit (dBm)
				20050	20175	20300	
				1720	1747.5	1775	
20	QPSK	1	0	23.41	23.52	23.25	24
20	QPSK	1	49	23.03	<b>23.87</b>	23.16	
20	QPSK	1	99	23.03	23.63	23.29	
20	QPSK	50	0	22.29	22.36	22.16	23
20	QPSK	50	24	22.39	<b>22.41</b>	22.04	
20	QPSK	50	50	22.05	22.36	22.21	
20	QPSK	100	0	22.18	<b>22.31</b>	22.01	23
20	16QAM	1	0	22.09	22.39	22.18	23
20	16QAM	1	49	22.20	22.32	22.39	
20	16QAM	1	99	<b>22.40</b>	22.26	22.31	
20	16QAM	50	0	21.46	21.37	21.53	22
20	16QAM	50	24	21.50	<b>21.54</b>	21.29	
20	16QAM	50	50	21.31	21.38	21.38	
20	16QAM	100	0	21.25	<b>21.37</b>	21.24	22
BW (MHz)	Modulation	RB Size	RB Offset	Channel/Frequency(MHz)			Tune-up limit (dBm)
				20025	20175	20325	
				1717.5	1747.5	1777.5	
15	QPSK	1	0	23.51	<b>23.96</b>	23.89	24
15	QPSK	1	37	23.53	23.02	23.84	
15	QPSK	1	74	23.01	23.39	23.21	
15	QPSK	36	0	22.03	22.02	22.21	23
15	QPSK	36	20	22.28	22.36	22.26	
15	QPSK	36	39	22.28	22.04	<b>22.39</b>	
15	QPSK	75	0	<b>22.43</b>	22.36	22.38	23
15	16QAM	1	0	22.25	22.22	22.28	23
15	16QAM	1	37	22.22	22.11	22.03	
15	16QAM	1	74	<b>22.40</b>	22.01	22.15	
15	16QAM	36	0	21.43	21.50	21.50	22
15	16QAM	36	20	<b>21.55</b>	21.27	21.26	
15	16QAM	36	39	21.53	21.42	21.48	
15	16QAM	75	0	<b>21.55</b>	21.15	21.15	22

BW (MHz)	Modulation	RB Size	RB Offset	Channel/Frequency(MHz)			Tune-up limit (dBm)
				20000	20175	20350	
				1715	1747.5	1780	
10	QPSK	1	0	23.20	23.18	<b>23.71</b>	24
10	QPSK	1	25	23.50	23.12	23.44	
10	QPSK	1	49	23.58	23.20	23.65	
10	QPSK	25	0	22.21	22.11	22.18	23
10	QPSK	25	12	22.18	22.23	22.41	
10	QPSK	25	25	<b>22.42</b>	22.11	22.22	
10	QPSK	50	0	<b>22.22</b>	22.20	22.01	23
10	16QAM	1	0	22.20	22.32	22.19	23
10	16QAM	1	25	22.29	22.11	<b>22.33</b>	
10	16QAM	1	49	22.11	22.11	22.14	
10	16QAM	25	0	21.29	21.39	21.38	22
10	16QAM	25	12	<b>21.55</b>	21.38	21.34	
10	16QAM	25	25	21.45	21.26	21.45	
10	16QAM	50	0	21.23	21.27	<b>21.33</b>	22
BW (MHz)	Modulation	RB Size	RB Offset	Channel/Frequency(MHz)			Tune-up limit (dBm)
				19975	20175	20375	
				1712.5	1747.5	1782.5	
5	QPSK	1	0	<b>23.87</b>	23.54	23.07	24
5	QPSK	1	12	23.70	23.19	23.85	
5	QPSK	1	24	23.72	23.15	23.34	
5	QPSK	12	0	22.41	22.02	22.35	23
5	QPSK	12	7	<b>22.45</b>	22.35	22.19	
5	QPSK	12	13	22.14	22.31	22.10	
5	QPSK	25	0	22.01	22.12	<b>22.33</b>	23
5	16QAM	1	0	22.17	22.28	22.32	23
5	16QAM	1	12	22.28	22.21	<b>22.45</b>	
5	16QAM	1	24	22.35	22.29	22.25	
5	16QAM	12	0	21.21	21.16	21.47	22
5	16QAM	12	7	<b>21.50</b>	21.47	21.28	
5	16QAM	12	13	21.34	21.38	21.24	
5	16QAM	25	0	21.45	<b>21.50</b>	21.43	22



BW (MHz)	Modulation	RB Size	RB Offset	Channel/Frequency(MHz)			Tune-up limit (dBm)
				19665	20175	20385	
				1711.5	1747.5	1783.5	
3	QPSK	1	0	23.46	23.61	23.66	24
3	QPSK	1	8	<b>23.71</b>	23.17	23.21	
3	QPSK	1	14	23.52	23.67	23.09	
3	QPSK	8	0	22.28	22.31	<b>22.41</b>	23
3	QPSK	8	4	22.32	22.17	22.33	
3	QPSK	8	7	<b>22.41</b>	22.07	22.04	
3	QPSK	15	0	22.18	<b>22.30</b>	22.21	23
3	16QAM	1	0	22.23	22.21	22.21	23
3	16QAM	1	8	22.05	22.31	22.17	
3	16QAM	1	14	22.08	<b>22.41</b>	22.36	
3	16QAM	8	0	21.41	21.33	21.48	22
3	16QAM	8	4	<b>21.55</b>	21.47	21.44	
3	16QAM	8	7	21.35	21.45	21.53	
3	16QAM	15	0	<b>21.52</b>	21.23	21.43	22
BW (MHz)	Modulation	RB Size	RB Offset	Channel/Frequency(MHz)			Tune-up limit (dBm)
				19957	20175	20393	
				1710.7	1747.5	1784.3	
1.4	QPSK	1	0	<b>23.80</b>	23.42	23.08	24
1.4	QPSK	1	3	23.29	23.74	23.16	
1.4	QPSK	1	5	23.72	23.59	23.10	
1.4	QPSK	3	0	22.38	22.16	<b>22.41</b>	23
1.4	QPSK	3	1	22.39	22.07	22.23	
1.4	QPSK	3	3	22.18	22.07	22.21	
1.4	QPSK	6	0	22.20	22.18	<b>22.35</b>	23
1.4	16QAM	1	0	22.30	22.28	22.12	23
1.4	16QAM	1	3	22.21	22.26	22.14	
1.4	16QAM	1	5	22.18	22.23	<b>22.33</b>	
1.4	16QAM	3	0	21.17	21.46	21.33	22
1.4	16QAM	3	1	21.42	21.32	21.31	
1.4	16QAM	3	3	21.34	21.53	<b>21.55</b>	
1.4	16QAM	6	0	21.24	21.25	<b>21.55</b>	22

LTE Band 5							
BW (MHz)	Modulation	RB Size	RB Offset	Channel/Frequency(MHz)			Tune-up limit (dBm)
				20450	20525	20600	
				829	836.5	844	
10	QPSK	1	0	23.24	23.50	<b>23.80</b>	24
10	QPSK	1	25	23.55	23.48	23.51	
10	QPSK	1	49	23.51	23.02	23.79	
10	QPSK	25	0	<b>22.41</b>	22.40	22.31	23
10	QPSK	25	12	22.20	22.09	22.03	
10	QPSK	25	25	22.18	22.03	22.34	
10	QPSK	50	0	22.40	<b>22.45</b>	22.30	23
10	16QAM	1	0	22.41	22.29	22.32	23
10	16QAM	1	25	22.31	22.21	22.37	
10	16QAM	1	49	<b>22.45</b>	22.12	22.12	
10	16QAM	25	0	21.51	21.53	21.31	22
10	16QAM	25	12	21.45	21.44	21.27	
10	16QAM	25	25	21.49	21.23	<b>21.55</b>	
10	16QAM	50	0	21.34	<b>21.42</b>	21.24	22
BW (MHz)	Modulation	RB Size	RB Offset	Channel/Frequency(MHz)			Tune-up limit (dBm)
				20425	20525	20625	
				826.5	836.5	846.5	
5	QPSK	1	0	23.76	23.40	23.55	24
5	QPSK	1	12	23.71	<b>23.80</b>	23.30	
5	QPSK	1	24	23.12	23.68	23.12	
5	QPSK	12	0	22.02	22.30	22.05	23
5	QPSK	12	7	22.11	22.01	22.04	
5	QPSK	12	13	22.09	<b>22.45</b>	22.08	
5	QPSK	25	0	22.34	22.07	<b>22.44</b>	23
5	16QAM	1	0	22.23	<b>22.40</b>	22.05	23
5	16QAM	1	12	22.05	22.03	22.37	
5	16QAM	1	24	22.18	22.25	22.32	
5	16QAM	12	0	21.52	21.36	<b>21.54</b>	22
5	16QAM	12	7	21.18	21.19	21.27	
5	16QAM	12	13	21.24	21.53	21.31	
5	16QAM	25	0	21.16	<b>21.54</b>	21.15	22

BW (MHz)	Modulation	RB Size	RB Offset	Channel/Frequency(MHz)			Tune-up limit (dBm)
				20415	20525	20635	
				825.5	836.5	844	
3	QPSK	1	0	23.51	23.68	23.65	24
3	QPSK	1	8	23.80	<b>23.97</b>	23.90	
3	QPSK	1	14	23.71	23.28	23.72	
3	QPSK	8	0	22.34	22.26	22.40	23
3	QPSK	8	4	22.36	22.15	22.33	
3	QPSK	8	7	<b>22.45</b>	22.23	22.31	
3	QPSK	15	0	22.22	22.15	<b>22.34</b>	23
3	16QAM	1	0	22.09	22.32	22.03	23
3	16QAM	1	8	22.12	22.42	22.42	
3	16QAM	1	14	<b>22.43</b>	22.07	22.07	
3	16QAM	8	0	21.28	21.15	21.20	22
3	16QAM	8	4	21.34	21.33	21.37	
3	16QAM	8	7	21.23	<b>21.46</b>	21.25	
3	16QAM	15	0	21.40	<b>21.49</b>	21.16	22
BW (MHz)	Modulation	RB Size	RB Offset	Channel/Frequency(MHz)			Tune-up limit (dBm)
				20407	20525	20643	
				824.7	836.5	848.3	
1.4	QPSK	1	0	23.01	<b>23.77</b>	23.48	24
1.4	QPSK	1	3	23.14	23.18	23.30	
1.4	QPSK	1	5	23.52	23.26	23.68	
1.4	QPSK	3	0	22.25	22.03	22.39	23
1.4	QPSK	3	1	<b>22.41</b>	22.17	22.22	
1.4	QPSK	3	3	22.28	22.25	22.03	
1.4	QPSK	6	0	<b>22.27</b>	<b>22.27</b>	22.25	23
1.4	16QAM	1	0	22.18	22.38	22.30	23
1.4	16QAM	1	3	<b>22.44</b>	22.38	22.29	
1.4	16QAM	1	5	22.02	22.13	22.01	
1.4	16QAM	3	0	21.35	21.33	21.24	22
1.4	16QAM	3	1	21.23	<b>21.52</b>	21.26	
1.4	16QAM	3	3	<b>21.52</b>	21.19	21.41	
1.4	16QAM	6	0	<b>21.53</b>	21.42	21.44	22

LTE Band 7							
BW (MHz)	Modulation	RB Size	RB Offset	Channel/Frequency(MHz)			Tune-up limit (dBm)
				20850	21100	21350	
				2510	2535	2560	
20	QPSK	1	0	23.09	23.41	23.30	24
20	QPSK	1	49	23.67	23.42	23.92	
20	QPSK	1	99	23.56	<b>23.93</b>	23.24	
20	QPSK	50	0	22.07	22.03	<b>22.44</b>	23
20	QPSK	50	24	22.42	22.13	22.34	
20	QPSK	50	50	22.28	22.18	22.27	
20	QPSK	100	0	22.06	22.19	<b>22.43</b>	23
20	16QAM	1	0	22.34	<b>22.45</b>	22.21	23
20	16QAM	1	49	22.38	22.31	22.30	
20	16QAM	1	99	22.33	22.38	22.29	
20	16QAM	50	0	21.18	21.54	21.48	22
20	16QAM	50	24	21.53	21.23	21.47	
20	16QAM	50	50	21.43	21.54	<b>21.55</b>	
20	16QAM	100	0	21.29	21.25	<b>21.40</b>	22
BW (MHz)	Modulation	RB Size	RB Offset	Channel/Frequency(MHz)			Tune-up limit (dBm)
				20825	21100	21375	
				2507.5	2535	2562.5	
15	QPSK	1	0	23.00	23.47	23.39	24
15	QPSK	1	37	23.39	23.52	23.74	
15	QPSK	1	74	23.71	<b>23.75</b>	23.50	
15	QPSK	36	0	22.18	22.34	<b>22.38</b>	23
15	QPSK	36	20	22.18	22.12	22.29	
15	QPSK	36	39	22.16	22.21	22.07	
15	QPSK	75	0	22.32	22.34	<b>22.35</b>	23
15	16QAM	1	0	22.16	22.20	22.19	23
15	16QAM	1	37	22.25	22.31	22.23	
15	16QAM	1	74	22.35	22.28	<b>22.42</b>	
15	16QAM	36	0	21.34	21.18	<b>21.46</b>	22
15	16QAM	36	20	21.32	21.19	21.41	
15	16QAM	36	39	21.42	21.19	21.38	
15	16QAM	75	0	21.23	<b>21.39</b>	21.17	22

BW (MHz)	Modulation	RB Size	RB Offset	Channel/Frequency(MHz)			Tune-up limit (dBm)
				20800	21100	21400	
				2505	2535	2565	
10	QPSK	1	0	<b>23.96</b>	23.80	23.50	23.0
10	QPSK	1	25	23.88	23.53	23.10	
10	QPSK	1	49	23.24	23.44	23.51	
10	QPSK	25	0	22.28	22.21	22.33	22.0
10	QPSK	25	12	22.08	<b>22.44</b>	22.02	
10	QPSK	25	25	22.40	22.15	22.20	
10	QPSK	50	0	22.01	22.21	<b>22.43</b>	22.0
10	16QAM	1	0	22.07	22.15	22.39	22.0
10	16QAM	1	25	22.11	22.05	22.10	
10	16QAM	1	49	22.39	<b>22.45</b>	22.02	
10	16QAM	25	0	21.38	21.50	<b>21.54</b>	21.0
10	16QAM	25	12	21.52	21.21	21.44	
10	16QAM	25	25	21.22	21.44	21.18	
10	16QAM	50	0	21.33	<b>21.47</b>	21.17	21.0
BW (MHz)	Modulation	RB Size	RB Offset	Channel/Frequency(MHz)			Tune-up limit (dBm)
				20775	21100	21425	
				2502.5	2535	2567.5	
5	QPSK	1	0	<b>23.98</b>	23.53	23.15	23.0
5	QPSK	1	12	23.05	23.89	23.57	
5	QPSK	1	24	23.26	23.63	23.56	
5	QPSK	12	0	22.26	22.26	22.30	22.0
5	QPSK	12	7	<b>22.40</b>	22.19	22.27	
5	QPSK	12	13	22.16	22.06	22.37	
5	QPSK	25	0	22.11	<b>22.20</b>	22.02	22.0
5	16QAM	1	0	22.05	<b>22.44</b>	22.06	22.0
5	16QAM	1	12	22.06	22.42	22.36	
5	16QAM	1	24	22.34	22.19	22.27	
5	16QAM	12	0	21.51	21.17	21.31	21.0
5	16QAM	12	7	21.51	21.49	<b>21.55</b>	
5	16QAM	12	13	<b>21.55</b>	21.33	21.43	
5	16QAM	25	0	21.34	21.31	<b>21.40</b>	21.0

LTE Band 17							
BW (MHz)	Modulation	RB Size	RB Offset	Channel/Frequency(MHz)			Tune-up limit (dBm)
				23780	23790	23800	
				709	710	711	
10	QPSK	1	0	23.62	23.71	23.13	26.0
10	QPSK	1	25	23.50	23.76	<b>23.82</b>	
10	QPSK	1	49	23.72	23.06	23.55	
10	QPSK	25	0	22.27	22.43	<b>22.45</b>	25.0
10	QPSK	25	12	22.30	22.41	22.24	
10	QPSK	25	25	22.35	22.22	22.41	
10	QPSK	50	0	22.25	<b>22.34</b>	22.09	25.0
10	16QAM	1	0	22.02	22.27	<b>22.38</b>	25.0
10	16QAM	1	25	22.34	22.11	22.11	
10	16QAM	1	49	22.11	22.10	22.33	
10	16QAM	25	0	21.25	21.32	21.16	24.0
10	16QAM	25	12	<b>21.46</b>	21.17	21.42	
10	16QAM	25	25	21.23	21.22	21.37	
10	16QAM	50	0	21.46	21.48	<b>21.54</b>	24.0
BW (MHz)	Modulation	RB Size	RB Offset	Channel/Frequency(MHz)			Tune-up limit (dBm)
				23755	23790	23825	
				706.5	710	713.5	
5	QPSK	1	0	23.11	23.66	23.15	26.0
5	QPSK	1	12	23.11	23.45	23.13	
5	QPSK	1	24	23.06	23.49	<b>23.96</b>	
5	QPSK	12	0	22.31	22.33	22.43	25.0
5	QPSK	12	7	<b>22.44</b>	22.07	22.33	
5	QPSK	12	13	22.40	<b>22.44</b>	22.16	
5	QPSK	25	0	22.01	22.41	<b>22.43</b>	25.0
5	16QAM	1	0	<b>22.43</b>	22.37	22.15	25.0
5	16QAM	1	12	22.01	22.38	22.06	
5	16QAM	1	24	22.05	22.03	22.26	
5	16QAM	12	0	21.54	21.21	21.36	24.0
5	16QAM	12	7	21.42	21.33	<b>21.55</b>	
5	16QAM	12	13	21.20	21.42	21.19	
5	16QAM	25	0	21.21	21.30	<b>21.43</b>	24.0



LTE Band 38							
BW (MHz)	Modulation	RB Size	RB Offset	Channel/Frequency(MHz)			Tune-up limit (dBm)
				37850	38000	38150	
				2580	2595	2610	
20	QPSK	1	0	23.27	<b>23.84</b>	23.33	23.0
20	QPSK	1	49	23.05	23.63	23.04	
20	QPSK	1	99	23.19	23.71	23.54	
20	QPSK	50	0	<b>22.39</b>	22.09	22.29	22.0
20	QPSK	50	24	22.32	22.09	22.03	
20	QPSK	50	50	22.20	22.02	<b>22.39</b>	
20	QPSK	100	0	<b>22.26</b>	22.03	22.03	22.0
20	16QAM	1	0	22.23	22.23	22.19	22.0
20	16QAM	1	49	22.34	22.36	22.10	
20	16QAM	1	99	<b>22.42</b>	22.21	22.31	
20	16QAM	50	0	21.32	21.42	21.19	21.0
20	16QAM	50	24	21.35	21.17	21.27	
20	16QAM	50	50	21.47	21.34	<b>21.55</b>	
20	16QAM	100	0	21.44	21.38	<b>21.51</b>	21.0
BW (MHz)	Modulation	RB Size	RB Offset	Channel/Frequency(MHz)			Tune-up limit (dBm)
				37825	38000	38175	
				2577.5	2595	2612.5	
15	QPSK	1	0	23.20	23.15	23.37	23.0
15	QPSK	1	37	23.12	23.48	23.16	
15	QPSK	1	74	23.61	23.35	<b>23.88</b>	
15	QPSK	36	0	22.22	22.15	22.33	22.0
15	QPSK	36	20	22.40	<b>22.41</b>	22.35	
15	QPSK	36	39	22.31	22.34	22.31	
15	QPSK	75	0	22.03	<b>22.30</b>	22.20	22.0
15	16QAM	1	0	22.20	<b>22.38</b>	22.16	22.0
15	16QAM	1	37	22.08	22.08	22.34	
15	16QAM	1	74	22.36	22.06	22.28	
15	16QAM	36	0	21.44	21.16	21.19	22.0
15	16QAM	36	20	21.39	21.31	21.20	
15	16QAM	36	39	21.45	<b>21.50</b>	21.27	
15	16QAM	75	0	<b>21.51</b>	21.18	21.47	21.0

BW (MHz)	Modulation	RB Size	RB Offset	Channel/Frequency(MHz)			Tune-up limit (dBm)
				37800	38000	38200	
				2575	2595	2615	
10	QPSK	1	0	23.33	23.18	23.32	23.0
10	QPSK	1	25	23.00	23.57	<b>23.77</b>	
10	QPSK	1	49	23.61	23.74	23.13	
10	QPSK	25	0	<b>22.40</b>	22.06	22.37	22.0
10	QPSK	25	12	22.25	22.29	22.37	
10	QPSK	25	25	22.26	22.09	22.20	
10	QPSK	50	0	22.27	<b>22.32</b>	22.30	22.0
10	16QAM	1	0	<b>22.45</b>	22.07	22.31	22.0
10	16QAM	1	25	22.44	22.17	22.20	
10	16QAM	1	49	22.07	22.44	22.17	
10	16QAM	25	0	<b>21.55</b>	21.53	21.31	21.0
10	16QAM	25	12	21.24	21.15	21.25	
10	16QAM	25	25	21.48	21.47	21.24	
10	16QAM	50	0	21.31	21.16	<b>21.36</b>	21.0
BW (MHz)	Modulation	RB Size	RB Offset	Channel/Frequency(MHz)			Tune-up limit (dBm)
				37775	38000	38225	
				2572.5	2595	2617.5	
5	QPSK	1	0	23.16	23.56	23.02	23.0
5	QPSK	1	12	23.37	23.74	23.88	
5	QPSK	1	24	<b>23.91</b>	23.62	23.84	
5	QPSK	12	0	22.06	22.13	22.19	22.0
5	QPSK	12	7	22.10	22.19	22.18	
5	QPSK	12	13	22.13	<b>22.38</b>	22.02	
5	QPSK	25	0	22.12	<b>22.16</b>	22.10	22.0
5	16QAM	1	0	22.36	22.41	22.01	22.0
5	16QAM	1	12	22.01	22.12	22.34	
5	16QAM	1	24	22.32	<b>22.42</b>	22.18	
5	16QAM	12	0	<b>21.55</b>	21.27	21.50	21.0
5	16QAM	12	7	21.34	21.37	21.45	
5	16QAM	12	13	21.50	21.20	21.28	
5	16QAM	25	0	21.41	21.32	<b>21.43</b>	21.0

LTE Band 41									
BW (MHz)	Modulation	RB Size	RB Offset	Channel/Frequency(MHz)					Tune-up limit (dBm)
				40140	40365	40590	40865	41140	
				2545	2567.5	2590	2617.5	2645	
20	QPSK	1	0	23.63	23.24	23.01	23.39	23.84	24.0
20	QPSK	1	49	23.42	23.59	<b>23.85</b>	23.45	23.20	
20	QPSK	1	99	23.59	23.37	23.23	23.18	23.21	
20	QPSK	50	0	22.39	22.38	<b>22.44</b>	22.32	22.25	23.0
20	QPSK	50	24	22.41	22.33	22.35	22.18	22.06	
20	QPSK	50	50	22.35	22.29	22.28	22.15	22.20	
20	QPSK	100	0	22.24	22.13	22.09	22.20	<b>22.35</b>	22.0
20	16QAM	1	0	22.09	22.08	22.22	22.13	22.09	22.0
20	16QAM	1	49	22.43	22.16	22.06	22.12	22.22	
20	16QAM	1	99	22.02	22.11	<b>22.26</b>	22.18	22.19	
20	16QAM	50	0	23.63	23.32	23.01	23.42	23.84	22.0
20	16QAM	50	24	23.42	23.54	<b>23.85</b>	23.47	23.20	
20	16QAM	50	50	23.59	23.38	23.23	23.17	23.21	
20	16QAM	100	0	22.39	22.38	<b>22.44</b>	22.25	22.25	22.0
BW (MHz)	Modulation	RB Size	RB Offset	Channel/Frequency(MHz)					Tune-up limit (dBm)
				40115	40350	40590	40875	41165	
				2542.5	2566	2590	2618.5	2647.5	
15	QPSK	1	0	23.62	23.59	23.74	23.76	23.89	24.0
15	QPSK	1	37	23.65	23.42	23.32	23.39	23.59	
15	QPSK	1	74	23.22	23.39	23.58	23.69	<b>23.91</b>	
15	QPSK	36	0	<b>22.44</b>	22.21	22.03	22.05	22.23	23.0
15	QPSK	36	20	22.01	22.04	22.07	22.04	22.02	
15	QPSK	36	39	22.40	22.31	22.37	22.16	22.12	
15	QPSK	75	0	22.10	22.10	<b>22.27</b>	22.12	22.02	23.0
15	16QAM	1	0	22.45	22.36	<b>22.39</b>	22.23	22.19	23.0
15	16QAM	1	37	22.28	22.05	22.02	22.14	22.34	
15	16QAM	1	74	22.07	22.11	22.27	22.22	22.37	
15	16QAM	36	0	<b>21.51</b>	21.43	21.47	21.36	21.34	23.0
15	16QAM	36	20	21.35	21.18	21.20	21.30	21.43	
15	16QAM	36	39	21.21	21.18	21.17	21.18	21.36	
15	16QAM	75	0	21.41	21.39	<b>21.43</b>	21.33	21.28	22.0

BW (MHz)	Modulation	RB Size	RB Offset	Channel/Frequency(MHz)					Tune-up limit (dBm)
				40090	40340	40590	40890	41190	
				2540	2565	2590	2620	2650	
10	QPSK	1	0	23.22	23.08	23.06	23.09	23.21	24.0
10	QPSK	1	25	23.40	23.39	23.48	23.46	<b>23.57</b>	
10	QPSK	1	49	23.33	23.25	23.24	23.29	23.47	
10	QPSK	25	0	<b>22.44</b>	22.33	22.37	22.37	22.40	23.0
10	QPSK	25	12	22.32	22.16	22.06	22.02	22.02	
10	QPSK	25	25	22.09	22.09	22.16	22.21	22.32	
10	QPSK	50	0	22.24	22.25	<b>22.30</b>	22.17	22.07	23.0
10	16QAM	1	0	22.32	22.14	22.03	22.05	22.07	23.0
10	16QAM	1	25	22.25	22.15	22.20	22.05	22.06	
10	16QAM	1	49	22.14	22.23	<b>22.44</b>	22.19	22.03	
10	16QAM	25	0	21.24	21.24	21.28	21.24	21.26	22.0
10	16QAM	25	12	21.47	21.29	21.15	21.26	21.38	
10	16QAM	25	25	21.28	21.39	<b>21.53</b>	21.35	21.27	
10	16QAM	50	0	<b>21.41</b>	21.37	21.39	21.29	21.29	22.0
BW (MHz)	Modulation	RB Size	RB Offset	Channel/Frequency(MHz)					Tune-up limit (dBm)
				40065	40325	40590	40900	41215	
				2537.5	2563.5	2590	2621	2652.5	
5	QPSK	1	0	23.22	23.39	23.70	23.81	<b>23.92</b>	24.0
5	QPSK	1	12	23.54	23.26	23.04	23.03	23.15	
5	QPSK	1	24	23.05	23.09	23.23	23.27	23.33	
5	QPSK	12	0	22.39	22.21	22.03	21.94	22.03	23.0
5	QPSK	12	7	<b>22.44</b>	22.16	22.03	22.14	22.36	
5	QPSK	12	13	22.37	22.26	22.34	22.33	22.37	
5	QPSK	25	0	22.07	22.10	22.18	22.27	<b>22.41</b>	23.0
5	16QAM	1	0	22.31	22.12	22.12	22.21	<b>22.40</b>	23.0
5	16QAM	1	12	22.12	22.08	22.11	22.08	22.06	
5	16QAM	1	24	22.14	22.19	22.35	22.31	22.28	
5	16QAM	12	0	21.18	21.33	<b>21.54</b>	21.35	21.30	22.0
5	16QAM	12	7	21.53	21.24	21.15	21.15	21.34	
5	16QAM	12	13	21.42	21.37	21.42	21.32	21.27	
5	16QAM	25	0	21.30	21.31	<b>21.43</b>	21.30	21.17	22.0

## &lt;WLAN 2.4GHz Conducted Power&gt;

Mode	Channel	Frequency (MHz)	Conducted Output power PK (dBm)	Conducted Average Output Power(dBm)	Tune-up limit (dBm)
802.11b	1	2412	15.08	13.85	15.0
	6	2437	15.83	14.58	15.0
	11	2462	15.62	14.38	15.0
802.11g	1	2412	14.67	10.29	11.0
	6	2437	15.43	10.86	11.0
	11	2462	15.26	10.78	11.0
802.11n(HT20)	1	2412	14.92	10.03	11.0
	6	2437	15.08	10.42	11.0
	11	2462	15.23	10.66	11.0
802.11n(HT40)	3	2422	13.69	9.07	10.0
	6	2437	14.62	9.64	10.0
	9	2452	14.49	9.61	10.0

## &lt;Bluetooth Conducted Power&gt;

Mode	Channel	Frequency (MHz)	Conducted PK Output Power(dBm)	Tune-up limit (dBm)
GFSK	0	2402	-0.79	1.0
	39	2441	-1.07	0.0
	78	2480	-1.03	0.0
$\pi/4$ DQPSK	0	2402	-2.21	-1.0
	39	2441	-2.58	-1.0
	78	2480	-2.50	-1.0
8DPSK	0	2402	-2.17	-1.0
	39	2441	-2.36	-1.0
	78	2480	-2.54	-1.0
BLE 1M	0	2402	-0.51	1.0
	19	2440	-0.84	1.0
	39	2480	-0.90	1.0

## 10.2 SAR Test Exclusion and Estimated SAR

### SAR Test Exclusion Considerations

Per KDB 447498 D01v06, the 1-g and 10-g SAR test exclusion thresholds for 100 MHz to 6 GHz at test separation distances  $\leq 50$  mm are determined by:

$[(\text{max. power of channel, including tune-up tolerance, mW}) / (\text{min. test separation distance, mm})] \cdot [\sqrt{f(\text{GHz})}] \leq 3.0$  for 1-g SAR and  $\leq 7.5$  for 10-g extremity SAR

- f(GHz) is the RF channel transmit frequency in GHz.
- Power and distance are rounded to the nearest mW and mm before calculation.
- The result is rounded to one decimal place for comparison.

Per KDB 447498 D01v06, at 100 MHz to 6 GHz and for test separation distances  $> 50$  mm, the SAR test exclusion threshold is determined according to the following:

- $[\text{Threshold at 50mm} + (\text{test separation distance} - 50\text{mm}) \cdot (f(\text{MHz}) / 150)] \text{mW}$ , at 100MHz to 1500MHz
- $[\text{Threshold at 50mm} + (\text{test separation distance} - 50\text{mm}) \cdot 10] \text{mW}$  at  $> 1500\text{MHz}$  and  $\leq 6\text{GHz}$

### Estimated SAR

Per KDB447498 requires when the standalone SAR test exclusion of section 4.3.1 is applied to an antenna that transmits simultaneously with other antennas, the standalone SAR must be estimated according to the following to determine simultaneous transmission SAR test exclusion;

- $(\text{max. power of channel, including tune-up tolerance, mW}) / (\text{min. test separation distance, mm}) \cdot [\sqrt{f(\text{GHz})} / x]$  W/kg for test separation distances  $\leq 50$  mm; where  $x = 7.5$  for 1-g SAR, and  $x = 18.75$  for 10-g SAR.
- 0.4 W/kg for 1-g SAR and 1.0 W/kg for 10-g SAR, when the test separation distances is  $> 50$  mm

The below table, exemption limits for routine evaluation based on frequency and separation distance was according to SAR-based Exemption – §1.1307(b)(3)(i)(B).

Standalone SAR Test Exclusion and Estimated SAR									
Wireless Interface	Frequency (MHz)	Configuration	Max. Power With tune-up		Distance (mm)	Calculation Result	SAR Exclusion Thresholds	Standalone SAR Exclusion	Estimated SAR (W/Kg)
			dBm	mW					
WIFI 2.4G	2450	Next to Mouth	15.0	31.623	10	4.9	3	No	N/A
Bluetooth	2450	Next to Mouth	1.0	1.259	10	0.2	3	Yes	0.026
WIFI 2.4G	2450	Wrist-worn	15.0	31.623	0	9.9	3	No	N/A
Bluetooth	2450	Wrist-worn	1.0	1.259	0	0.4	3	Yes	0.053

Remark:

1. Maximum average power including tune-up tolerance;
2. When the minimum test separation distance is  $< 5$  mm, a distance of 5 mm is applied to determine SAR test exclusion
3. when the distance is  $< 50$  mm exclusion threshold is "Ratio", when the distance is  $> 50$  mm exclusion threshold is "mW".



### 10.3 SAR Test Results Summary

#### General Note:

- 1 Per KDB 447498 D01v06, the reported SAR is the measured SAR value adjusted for maximum tune-up tolerance.
  - c) Tune-up scaling Factor = tune-up limit power (mW) / EUT RF power (mW), where tune-up limit is the maximum rated power among all production units.
  - d) For SAR testing of WLAN signal with non-100% duty cycle, the measured SAR is scaled-up by the duty cycle scaling factor which is equal to "1/(duty cycle)"
  - e) For WLAN/Bluetooth: Reported SAR(W/kg)= Measured SAR(W/kg)\* Duty Cycle scaling factor \* Tune-up scaling factor
- 2 Per KDB 447498 D01v06, for each exposure position, testing of other required channels within the operating mode of a frequency band is not required when the reported 1-g or 10-g SAR for the mid-band or highest output power channel is:
  - $\leq 0.8$  W/kg or 2.0 W/kg, for 1-g or 10-g respectively, when the transmission band is  $\leq 100$  MHz
  - $\leq 0.6$  W/kg or 1.5 W/kg, for 1-g or 10-g respectively, when the transmission band is between 100 MHz and 200 MHz
  - $\leq 0.4$  W/kg or 1.0 W/kg, for 1-g or 10-g respectively, when the transmission band is  $\geq 200$  MHz
- 3 Per KDB 865664 D01v01r04, for each frequency band, repeated SAR measurement is required only when the measured SAR is  $\geq 0.8$ W/kg, The same procedures should be adapted for measurements according to extremity and occupational exposure limits by applying a factor of 2.5 for extremity exposure and a factor of 5 for occupational exposure to the corresponding SAR thresholds.

## SAR Results

## SAR Values [GSM 850]

Plot No.	Mode	Test Position	Ch.	Freq. (MHz)	Average Power (dBm)	Tune-Up Limit (dBm)	Scaling Factor	Power Drift (dB)	Measured SAR(W/kg)		Scaled SAR(W/kg)	
									SAR <sub>1g</sub>	SAR <sub>10g</sub>	SAR <sub>1g</sub>	SAR <sub>10g</sub>
Measured / Reported SAR numbers- Next to Mouth-distance 10mm												
	GSM Voice	Front Side	251	848.8	32.62	33.00	1.091	0.09	0.087	--	0.095	--
Measured / Reported SAR numbers-Wrist-worn-distance 0mm												
#1	GPRS 4TX slot	Back Side	251	848.8	26.77	27.00	1.054	-0.05	--	0.494	--	0.521

## SAR Values [PCS 1900]

Plot No.	Mode	Test Position	Ch.	Freq. (MHz)	Average Power (dBm)	Tune-Up Limit (dBm)	Scaling Factor	Power Drift (dB)	Measured SAR(W/kg)		Scaled SAR(W/kg)	
									SAR <sub>1g</sub>	SAR <sub>10g</sub>	SAR <sub>1g</sub>	SAR <sub>10g</sub>
Measured / Reported SAR numbers- Next to Mouth-distance 10mm												
	GSM Voice	Front Side	512	1850.2	30.65	31.00	1.084	0.03	0.187	--	0.203	
Measured / Reported SAR numbers-Wrist-worn-distance 0mm												
#2	GPRS 3TX slot	Back Side	512	1850.2	25.83	26.00	1.040	-0.09	--	1.554	--	1.616

## SAR Values [WCDMA Band II]

Plot No.	Mode	Test Position	Ch.	Freq. (MHz)	Average Power (dBm)	Tune-Up Limit (dBm)	Scaling Factor	Power Drift (dB)	Measured SAR(W/kg)		Scaled SAR(W/kg)	
									SAR <sub>1g</sub>	SAR <sub>10g</sub>	SAR <sub>1g</sub>	SAR <sub>10g</sub>
Measured / Reported SAR numbers- Next to Mouth-distance 10mm												
	RMC 12.2K	Front Side	9400	1880.0	23.60	24.00	1.096	0.11	0.255	--	0.280	
Measured / Reported SAR numbers-Wrist-worn-distance 0mm												
#3	RMC 12.2K	Back Side	9400	1880.0	23.60	24.00	1.096	-0.07	--	1.672	--	1.833

## SAR Values [WCDMA Band V]

Plot No.	Mode	Test Position	Ch.	Freq. (MHz)	Average Power (dBm)	Tune-Up Limit (dBm)	Scaling Factor	Power Drift (dB)	Measured SAR(W/kg)		Scaled SAR(W/kg)	
									SAR <sub>1g</sub>	SAR <sub>10g</sub>	SAR <sub>1g</sub>	SAR <sub>10g</sub>
Measured / Reported SAR numbers- Next to Mouth-distance 10mm												
	RMC 12.2K	Front Side	4183	836.6	23.61	24.00	1.094	0.07	0.220	--	0.241	--
Measured / Reported SAR numbers-Wrist-worn-distance 0mm												
#4	RMC 12.2K	Back Side	4183	836.6	23.61	24.00	1.094	-0.03	--	1.465	--	1.603

SAR Values [LTE Band 2]

Plot No.	Mode	Test Position	Ch.	Freq. (MHz)	Average Power (dBm)	Tune-Up Limit (dBm)	Scaling Factor	Power Drift (dB)	Measured SAR(W/kg)		Scaled SAR(W/kg)	
									SAR <sub>1g</sub>	SAR <sub>10g</sub>	SAR <sub>1g</sub>	SAR <sub>10g</sub>
<b>Measured / Reported SAR numbers- Next to Mouth-distance 10mm</b>												
	20MHz/1RB#49	Front Side	18900	1880	23.80	24.00	1.047	0.09	0.194	--	0.203	--
	20MHz/50RB#0	Front Side	18900	1880	22.36	23.00	1.159	-0.11	0.141	--	0.163	--
<b>Measured / Reported SAR numbers-Wrist-worn-distance 0mm</b>												
#5	20MHz/1RB#49	Back Side	18900	1880	23.80	24.00	1.047	-0.05	--	1.351	--	1.415
	20MHz/50RB#0	Back Side	18900	1880	22.36	23.00	1.159	-0.07	--	1.105	--	1.280

SAR Values [LTE Band 4]

Plot No.	Mode	Test Position	Ch.	Freq. (MHz)	Average Power (dBm)	Tune-Up Limit (dBm)	Scaling Factor	Power Drift (dB)	Measured SAR(W/kg)		Scaled SAR(W/kg)	
									SAR <sub>1g</sub>	SAR <sub>10g</sub>	SAR <sub>1g</sub>	SAR <sub>10g</sub>
<b>Measured / Reported SAR numbers- Next to Mouth-distance 10mm</b>												
	20MHz/1RB#49	Front Side	20175	1747.5	23.87	24.00	1.030	0.09	0.175	--	0.180	--
	20MHz/50RB#24	Front Side	20175	1747.5	22.41	23.00	1.146	0.11	0.131	--	0.150	--
<b>Measured / Reported SAR numbers-Wrist-worn-distance 0mm</b>												
#6	20MHz/1RB#49	Back Side	20175	1747.5	23.87	24.00	1.030	-0.07	--	1.145	--	1.180
	20MHz/50RB#24	Back Side	20175	1747.5	22.41	23.00	1.146	-0.05	--	0.965	--	1.105

SAR Values [LTE Band 5]

Plot No.	Mode	Test Position	Ch.	Freq. (MHz)	Average Power (dBm)	Tune-Up Limit (dBm)	Scaling Factor	Power Drift (dB)	Measured SAR(W/kg)		Scaled SAR(W/kg)	
									SAR <sub>1g</sub>	SAR <sub>10g</sub>	SAR <sub>1g</sub>	SAR <sub>10g</sub>
<b>Measured / Reported SAR numbers- Next to Mouth-distance 10mm</b>												
	10MHz/1RB#0	Front Side	20600	844	23.80	24.00	1.047	0.09	0.195	--	0.204	--
	10MHz/25RB#0	Front Side	20450	829	22.41	23.00	1.146	-0.03	0.152	--	0.174	--
<b>Measured / Reported SAR numbers-Wrist-worn-distance 0mm</b>												
#7	10MHz/1RB#0	Back Side	20600	844	23.80	24.00	1.047	-0.05	--	1.229	--	1.287
	10MHz/25RB#0	Back Side	20450	829	22.41	23.00	1.146	0.05	--	1.012	--	1.159

SAR Values [LTE Band 7]

Plot No.	Mode	Test Position	Ch.	Freq. (MHz)	Average Power (dBm)	Tune-Up Limit (dBm)	Scaling Factor	Power Drift (dB)	Measured SAR(W/kg)		Scaled SAR(W/kg)	
									SAR <sub>1g</sub>	SAR <sub>10g</sub>	SAR <sub>1g</sub>	SAR <sub>10g</sub>
<b>Measured / Reported SAR numbers- Next to Mouth-distance 10mm</b>												
	20MHz/1RB#99	Front Side	21100	2535	23.93	24.00	1.016	0.04	0.335	--	0.340	--
	20MHz/50RB#0	Front Side	21350	2560	22.44	23.00	1.138	0.03	0.244	--	0.278	--
<b>Measured / Reported SAR numbers-Wrist-worn-distance 0mm</b>												
#8	20MHz/1RB#99	Back Side	21100	2535	23.93	24.00	1.016	-0.07	--	1.124	--	1.142
	20MHz/50RB#0	Back Side	21350	2560	22.44	23.00	1.138	0.11	--	0.932	--	1.060

SAR Values [LTE Band 17]

Plot No.	Mode	Test Position	Ch.	Freq. (MHz)	Average Power (dBm)	Tune-Up Limit (dBm)	Scaling Factor	Power Drift (dB)	Measured SAR(W/kg)		Scaled SAR(W/kg)	
									SAR <sub>1g</sub>	SAR <sub>10g</sub>	SAR <sub>1g</sub>	SAR <sub>10g</sub>
<b>Measured / Reported SAR numbers- Next to Mouth-distance 10mm</b>												
	10MHz/1RB#25	Front Side	23800	711	23.82	24.00	1.042	0.11	0.177	--	0.184	--
	10MHz/25RB#0	Front Side	23800	711	22.45	23.00	1.135	-0.03	0.104	--	0.118	--
<b>Measured / Reported SAR numbers-Wrist-worn-distance 0mm</b>												
#9	10MHz/1RB#25	Back Side	23800	711	23.82	24.00	1.042	-0.04	--	1.044	--	1.088
	10MHz/25RB#0	Back Side	23800	711	22.45	23.00	1.135	0.05	--	0.905	--	1.027

SAR Values [LTE Band 41]

Plot No.	Mode	Test Position	Ch.	Freq. (MHz)	Average Power (dBm)	Tune-Up Limit (dBm)	Scaling Factor	Power Drift (dB)	Measured SAR(W/kg)		Scaled SAR(W/kg)	
									SAR <sub>1g</sub>	SAR <sub>10g</sub>	SAR <sub>1g</sub>	SAR <sub>10g</sub>
<b>Measured / Reported SAR numbers- Next to Mouth-distance 10mm</b>												
	20MHz/1RB#49	Front Side	40590	2590	23.85	24.00	1.035	0.09	0.142	--	0.147	--
	20MHz/50RB#0	Front Side	40590	2590	22.44	23.00	1.138	0.07	0.103	--	0.117	--
<b>Measured / Reported SAR numbers-Wrist-worn-distance 0mm</b>												
#10	20MHz/1RB#49	Back Side	40590	2590	23.85	24.00	1.035	-0.01	--	1.622	--	1.679
	20MHz/50RB#0	Back Side	40590	2590	22.44	23.00	1.138	-0.03	--	1.323	--	1.505

Note: LTE B38 SAR test was covered by LTE B41; according to April 2015 TCB workshop, SAR test for overlapping LTE bands can be reduced if a. the maximum output power, including tolerance, for the smaller band is ≤ the larger band to qualify for the SAR test exclusion  
b. the channel bandwidth and other operating parameters for the smaller band are fully supported by the larger band.

SAR Values [WIFI]

Plot No.	Mode	Test Position	Ch.	Freq. (MHz)	Average Power (dBm)	Tune-Up Limit (dBm)	Scaling Factor	Power Drift (dB)	Measured SAR(W/kg)		Scaled SAR(W/kg)	
									SAR <sub>1g</sub>	SAR <sub>10g</sub>	SAR <sub>1g</sub>	SAR <sub>10g</sub>
<b>Measured / Reported SAR numbers- Next to Mouth-distance 10mm</b>												
	802.11b	Front Side	06	2437	14.58	15.0	1.102	0.05	0.086	--	0.095	--
<b>Measured / Reported SAR numbers-Wrist-worn-distance 0mm</b>												
#11	802.11b	Back Side	06	2437	14.58	15.0	1.102	-0.03	--	0.201	--	0.221

Note: Per KDB 248227 D01v02r02, for 2.4GHz 802.11g/n SAR testing is not required when the highest reported SAR for DSSS is adjusted by the ratio of OFDM to DSSS specified maximum output power and the adjusted SAR is ≤ 1.2 W/kg.





### 10.5 Simultaneous Transmission Analysis

Per FCC KD B447498 D01, simultaneous transmission SAR test exclusion may be applied when the sum of the 1-g SAR for all the transmitting antenna in a specific a physical test configuration is ≤1.6 W/Kg. When the sum is greater than the SAR limit, SAR test exclusion is determined by the SAR to peak location separation ratio.

$$\text{Ratio} = \frac{(\text{SAR}_1 + \text{SAR}_2)^{1.5}}{(\text{peak location separation, mm})} < 0.04$$

The following procedures adopted from “FCC SAR Considerations for Cell Phones with Multiple Transmitters” are applicable to handsets with built-in unlicensed transmitters such as 802.11 a/b/g/n and Bluetooth devices which may simultaneously transmit with the licensed transmitter.

Application Simultaneous Transmission information:

No.	Simultaneous Transmission Configurations	Position	
		Next to Mouth	Wrist-worn
1	WWAN (2/3/4G) + WLAN 2.4GHz	Yes	Yes
2	WWAN (2/3/4G) + Bluetooth	Yes	Yes

Note: WLAN2.4G and BT share the same antenna and cannot transmitting at the same time.

### 10.8.2 Evaluation of Simultaneous SAR

Simultaneous transmission SAR for WLAN/BT and GSM/WCDMA/LTE\_ Next to Mouth

Exposure Position	1	2	3	1+2 Summed 1g SAR (W/kg)	1+3 Summed 1g SAR (W/kg)	SPLSR
	MAX. WWAN Reported SAR	MAX. WLAN2.4G Reported SAR	Bluetooth			
	1g SAR (W/kg)	1g SAR (W/kg)	1g SAR (W/kg)			
Front Side	0.340	0.095	0.026	0.435	0.366	N/A

MAX. ΣSAR<sub>1g</sub> = 0.435 W/kg < 1.6 W/kg, so the Simultaneous transmission SAR with volume scan are not required.

Simultaneous transmission SAR for WLAN/BT and GSM/WCDMA/LTE\_ Wrist-worn

Exposure Position	1	2	3	1+2 Summed 10g SAR (W/kg)	1+3 Summed 10g SAR (W/kg)	SPLSR
	MAX. WWAN Reported SAR	MAX. WLAN2.4G Reported SAR	Bluetooth			
	10g SAR (W/kg)	10g SAR (W/kg)	10g SAR (W/kg)			
Front Side	1.833	0.221	0.053	2.054	1.886	N/A

MAX. ΣSAR<sub>10g</sub> = 2.054 W/kg < 4 W/kg, so the Simultaneous transmission SAR with volume scan are not required.

## 11 Measurement Uncertainty

NO	Source	Uncert. ai (%)	Prob. Dist.	Div. k	ci (1g)	ci (10g)	Stand.U ncert. ui (1g)	Stand.U ncert. ui (10g)	Veff
1	Repeat	0.4	N	1	1	1	0.4	0.4	9
<b>Instrument</b>									
2	Probe calibration	7	N	2	1	1	3.5	3.5	$\infty$
3	Axial isotropy	4.7	R	$\sqrt{3}$	0.7	0.7	1.9	1.9	$\infty$
4	Hemispherical isotropy	9.4	R	$\sqrt{3}$	0.7	0.7	3.9	3.9	$\infty$
5	Boundary effect	1.0	R	$\sqrt{3}$	1	1	0.6	0.6	$\infty$
6	Linearity	4.7	R	$\sqrt{3}$	1	1	2.7	2.7	$\infty$
7	Detection limits	1.0	R	$\sqrt{3}$	1	1	0.6	0.6	$\infty$
8	Readout electronics	0.3	N	1	1	1	0.3	0.3	$\infty$
9	Response time	0.8	R	$\sqrt{3}$	1	1	0.5	0.5	$\infty$
10	Integration time	2.6	R	$\sqrt{3}$	1	1	1.5	1.5	$\infty$
11	Ambient noise	3.0	R	$\sqrt{3}$	1	1	1.7	1.7	$\infty$
12	Ambient reflections	3.0	R	$\sqrt{3}$	1	1	1.7	1.7	$\infty$
13	Probe positioner mech. restrictions	0.4	R	$\sqrt{3}$	1	1	0.2	0.2	$\infty$
14	Probe positioning with respect to phantom shell	2.9	R	$\sqrt{3}$	1	1	1.7	1.7	$\infty$
15	Max.SAR evaluation	1.0	R	$\sqrt{3}$	1	1	0.6	0.6	$\infty$

Test sample related									
16	Device positioning	3.8	N	1	1	1	3.8	3.8	99
17	Device holder	5.1	N	1	1	1	5.1	5.1	5
18	Drift of output power	5.0	R	$\frac{1}{\sqrt{3}}$	1	1	2.9	2.9	$\infty$
Phantom and set-up									
19	Phantom uncertainty	4.0	R	$\frac{1}{\sqrt{3}}$	1	1	2.3	2.3	$\infty$
20	Liquid conductivity (target)	5.0	R	$\frac{1}{\sqrt{3}}$	0.64	0.43	1.8	1.2	$\infty$
21	Liquid conductivity (meas)	2.5	N	1	0.64	0.43	1.6	1.2	$\infty$
22	Liquid Permittivity (target)	5.0	R	$\frac{1}{\sqrt{3}}$	0.6	0.49	1.7	1.5	$\infty$
23	Liquid Permittivity (meas)	2.5	N	1	0.6	0.49	1.5	1.2	$\infty$
<b>Combined standard</b>			RSS	$u_c = \sqrt{\sum_{i=1}^n C_i^2 U_i^2}$			11.4%	11.3%	236
<b>Expanded uncertainty(P=95%)</b>		$U = k U_c$					<b>22.8%</b>	<b>22.6%</b>	

### Appendix A. EUT Photos and Test Setup Photos



Front(10mm)



Back(0mm)

## Appendix B. Plots of SAR System Check

### 750MHz System Check

Date: 04/21/2024

**DUT: Dipole 750 MHz; Type: D750V3; Serial: 1194**

Communication System: CW; Frequency: 750 MHz; Duty Cycle: 1:1

Medium parameters used (interpolated):  $f = 750$  MHz;  $\sigma = 0.909$  S/m;  $\epsilon_r = 41.209$ ;  $\rho = 1000$  kg/m<sup>3</sup>

Phantom section: Flat Section

#### DASY5 Configuration:

- Probe: EX3DV4 - SN7380; ConvF(10.02, 10.02, 10.02) ; Calibrated: 6/21/2023
- Sensor-Surface: 1.4mm (Mechanical Surface Detection)
- Electronics: DAE3 Sn428; Calibrated: 08/30/2023
- Phantom: Twin-SAM V8.0 ; Type: QD 000 P41 AA; Serial: 1974
- DASY52 52.10.2(1495); SEMCAD X 14.6.12(7450)

**Area Scan (81x81x1):** Interpolated grid: dx=1.500 mm, dy=1.500 mm

Maximum value of SAR (interpolated) = 3.14 W/kg

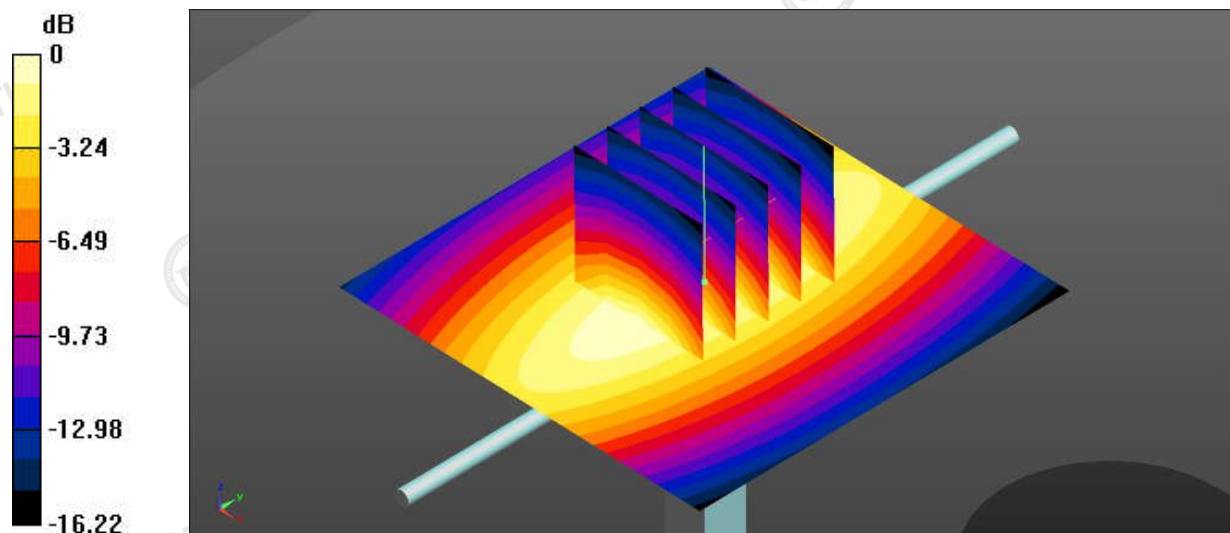
**Zoom Scan (5x5x7)/Cube 0:** Measurement grid: dx=8mm, dy=8mm, dz=5mm

Reference Value = 55.42 V/m; Power Drift = -0.05 dB

Peak SAR (extrapolated) = 3.51 W/kg

**SAR(1 g) = 2.20 W/kg; SAR(10 g) = 1.44 W/kg**

Maximum value of SAR (measured) = 2.97 W/kg



0 dB = 2.97 W/kg

System Performance Check 750MHz 250mW

### 835MHz System Check

Date: 04/22/2024

**DUT: Dipole 835 MHz; Type: D835V2; Serial: 484**

Communication System: CW; Frequency: 835 MHz; Duty Cycle: 1:1

Medium parameters used (interpolated):  $f = 835 \text{ MHz}$ ;  $\sigma = 0.883 \text{ S/m}$ ;  $\epsilon_r = 41.068$ ;  $\rho = 1000 \text{ kg/m}^3$

Phantom section: Flat Section

#### DASY5 Configuration:

- Probe: EX3DV4 – SN7380; ConvF(9.62, 9.62, 9.62); Calibrated: June 21, 2023;
- Sensor-Surface: 4mm (Mechanical Surface Detection)
- Electronics: DAE3 Sn428; Calibrated: Aug.30,2023;
- Phantom: SAM 1; Type: SAM;
- Measurement SW: DASY52, Version 52.8 (2); SEMCAD X Version 14.6.10 (7164)

**Area Scan (61x61x1):** Interpolated grid:  $dx=1.500 \text{ mm}$ ,  $dy=1.500 \text{ mm}$

Maximum value of SAR (interpolated) =  $3.43 \text{ W/kg}$

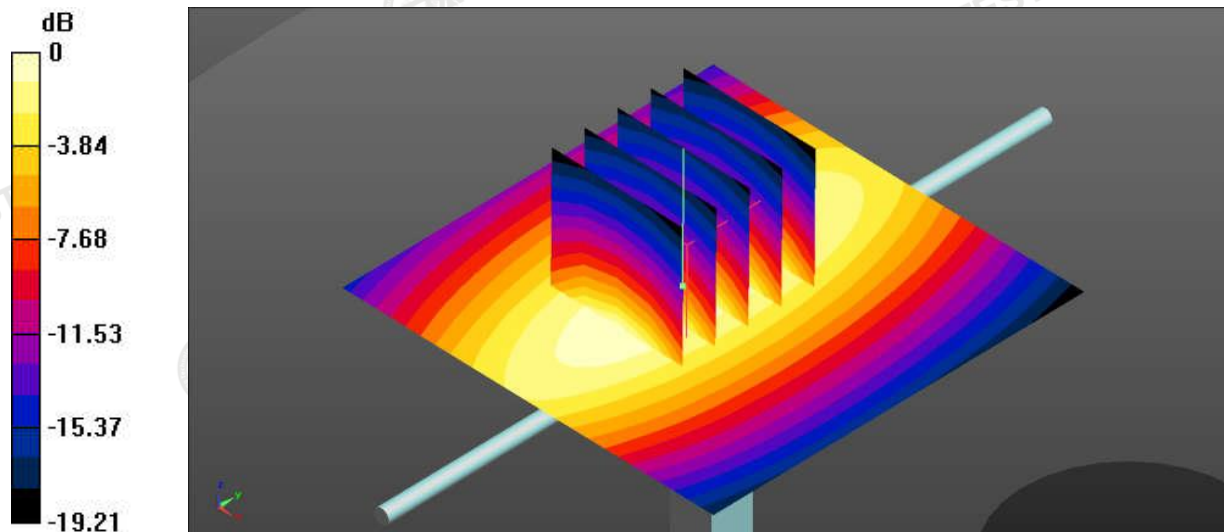
**Zoom Scan (5x5x7)/Cube 0:** Measurement grid:  $dx=8\text{mm}$ ,  $dy=8\text{mm}$ ,  $dz=5\text{mm}$

Reference Value =  $62.54 \text{ V/m}$ ; Power Drift =  $0.03 \text{ dB}$

Peak SAR (extrapolated) =  $4.21 \text{ W/kg}$

**SAR(1 g) =  $2.51 \text{ W/kg}$ ; SAR(10 g) =  $1.59 \text{ W/kg}$**

Maximum value of SAR (measured) =  $3.50 \text{ W/kg}$



0 dB =  $3.50 \text{ W/kg}$

System Performance Check 835MHz 250mW



**1750 MHz System Check**

Date: 04/23/2024

**DUT: Dipole 1800 MHz; Type: D1800V2; Serial: 2d158**

Communication System: CW; Frequency: 1750 MHz; Duty Cycle: 1:1

Medium parameters used (interpolated):  $f = 1750$  MHz;  $\sigma = 1.369$  S/m;  $\epsilon_r = 38.981$ ;  $\rho = 1000$  kg/m<sup>3</sup>

Phantom section: Flat Section

**DASY5 Configuration:**

- Probe: EX3DV4 – SN7380; ConvF(8.35, 8.35, 8.35); Calibrated: June 21, 2023;
- Sensor-Surface: 4mm (Mechanical Surface Detection)
- Electronics: DAE3 Sn428; Calibrated: Aug.30,2023;
- Phantom: SAM 1; Type: SAM;
- Measurement SW: DASY52, Version 52.8 (2); SEMCAD X Version 14.6.10 (7164)

**Area Scan (61x61x1):** Interpolated grid: dx=1.500 mm, dy=1.500 mm

Maximum value of SAR (interpolated) = 15.65 W/kg

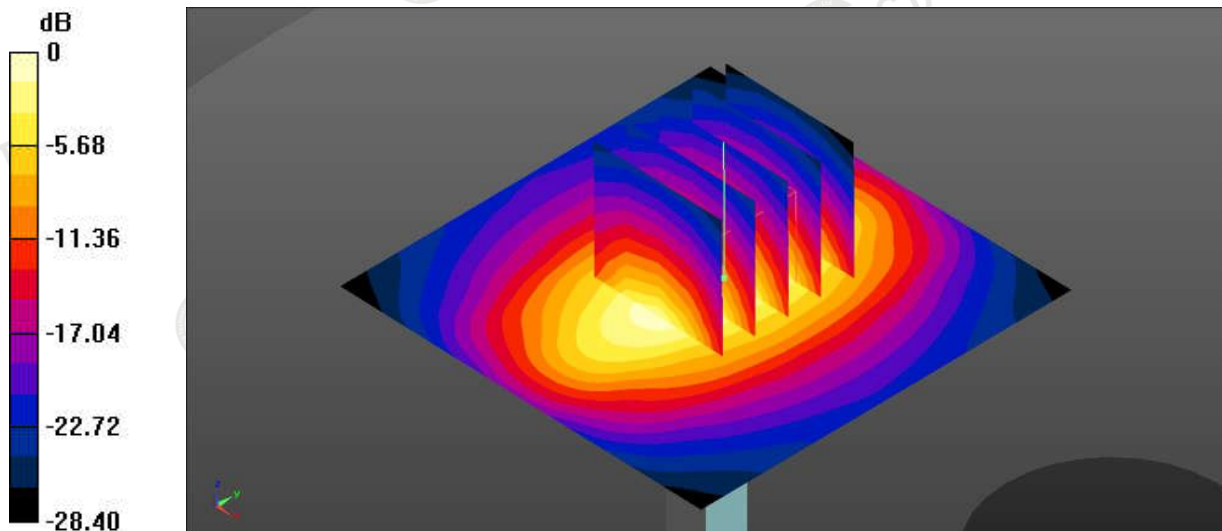
**Zoom Scan (5x5x7)/Cube 0:** Measurement grid: dx=8mm, dy=8mm, dz=5mm

Reference Value = 90.25 V/m; Power Drift = -0.07 dB

Peak SAR (extrapolated) = 19.5 W/kg

**SAR(1 g) = 9.34 W/kg; SAR(10 g) = 4.80 W/kg**

Maximum value of SAR (measured) = 15.4 W/kg



0 dB = 15.4 W/kg

System Performance Check 1750MHz 250mW

### 1900MHz System Check

Date: 04/24/2024

**DUT: Dipole 1900 MHz; Type: D1900V2; Serial: 5d002**

Communication System: CW; Frequency: 1900 MHz; Duty Cycle: 1:1

Medium parameters used (interpolated):  $f = 1900$  MHz;  $\sigma = 1.398$  S/m;  $\epsilon_r = 39.944$ ;  $\rho = 1000$  kg/m<sup>3</sup>

Phantom section: Flat Section

#### DASY5 Configuration:

- Probe: EX3DV4 – SN7380; ConvF(8.05, 8.05, 8.05); Calibrated: June 21, 2023;
- Sensor-Surface: 4mm (Mechanical Surface Detection)
- Electronics: DAE3 Sn428; Calibrated: Aug.30,2023;
- Phantom: SAM 1; Type: SAM;
- Measurement SW: DASY52, Version 52.8 (2); SEMCAD X Version 14.6.10 (7164)

**Area Scan (61x61x1):** Interpolated grid: dx=1.500 mm, dy=1.500 mm

Maximum value of SAR (interpolated) = 13.2 W/kg

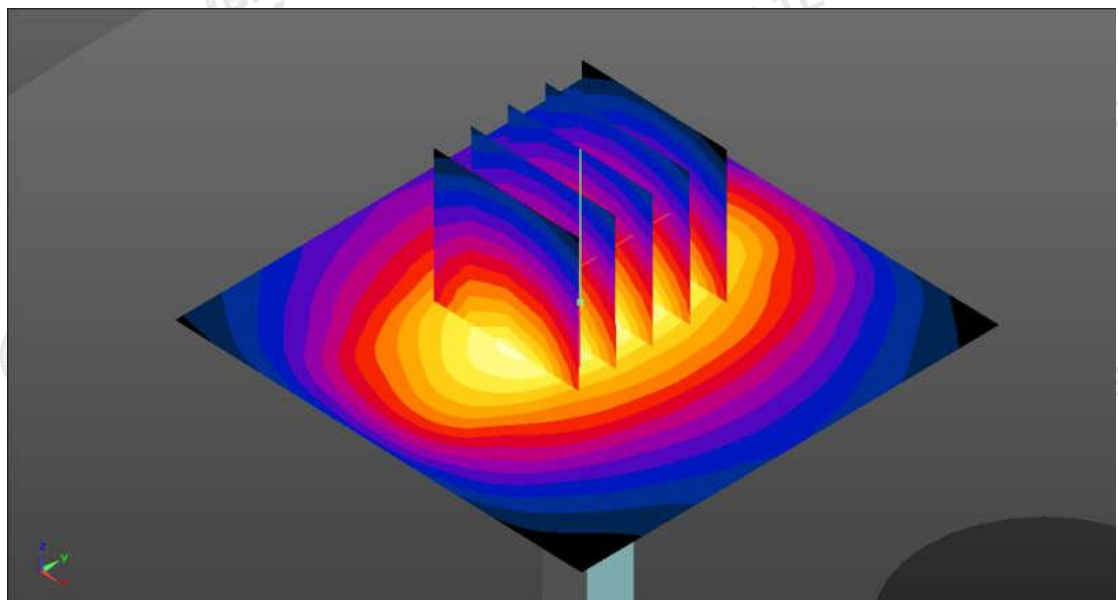
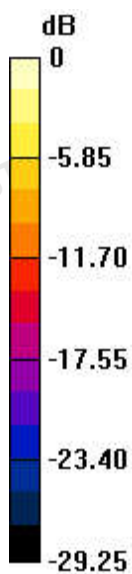
**Zoom Scan (5x5x7)/Cube 0:** Measurement grid: dx=8mm, dy=8mm, dz=5mm

Reference Value = 82.90 V/m; Power Drift = -0.07 dB

Peak SAR (extrapolated) = 16.65 W/kg

**SAR(1 g) = 10.53 W/kg; SAR(10 g) = 5.33 W/kg**

Maximum value of SAR (measured) = 14.1 W/kg



0 dB = 14.1 W/kg

System Performance Check 1900MHz 250mW

### 2450MHz System Check

Date: 04/28/2024

**DUT: Dipole 2450 MHz; Type: D2450V2; Serial: 745**

Communication System: CW; Frequency: 2450 MHz; Duty Cycle: 1:1

Medium parameters used (interpolated):  $f = 2450$  MHz;  $\sigma = 1.833$  S/m;  $\epsilon_r = 38.087$ ;  $\rho = 1000$  kg/m<sup>3</sup>

Phantom section: Flat Section

#### DASY5 Configuration:

- Probe: EX3DV4 – SN7380; ConvF(7.50, 7.50, 7.50); Calibrated: June 21, 2023;
- Sensor-Surface: 4mm (Mechanical Surface Detection)
- Electronics: DAE3 Sn428; Calibrated: Aug.30,2023;
- Phantom: SAM 1; Type: SAM;
- Measurement SW: DASY52, Version 52.8 (2); SEMCAD X Version 14.6.10 (7164)

**Area Scan (71x71x1):** Interpolated grid: dx=1.200 mm, dy=1.200 mm

Maximum value of SAR (interpolated) = 20.3 W/kg

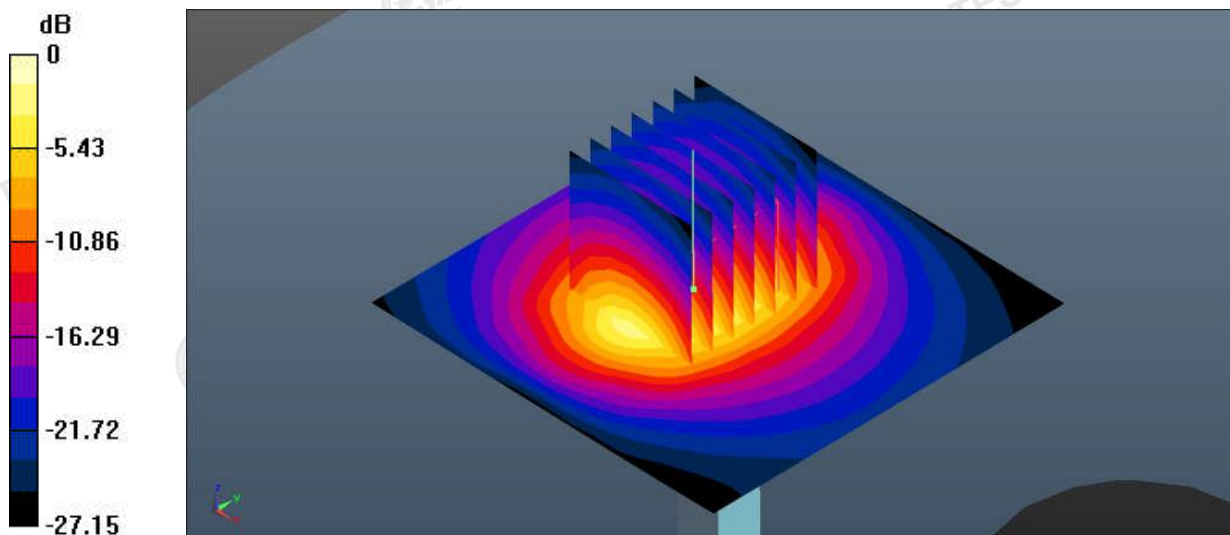
**Zoom Scan (7x7x7)/Cube 0:** Measurement grid: dx=5mm, dy=5mm, dz=5mm

Reference Value = 107.5 V/m; Power Drift = -0.11 dB

Peak SAR (extrapolated) = 25.5 W/kg

**SAR(1 g) = 13.56 W/kg; SAR(10 g) = 6.26 W/kg**

Maximum value of SAR (measured) = 18.8 W/kg



0 dB = 18.8 W/kg

System Performance Check 2450MHz 250mW

### 2600MHz System Check

Date: 04/25/2024

**DUT: Dipole 2600 MHz; Type: D2600V2; Serial: 1073**

Communication System: CW; Frequency: 2600 MHz; Duty Cycle: 1:1

Medium parameters used (interpolated):  $f = 2600$  MHz;  $\sigma = 1.919$  S/m;  $\epsilon_r = 37.935$ ;  $\rho = 1000$  kg/m<sup>3</sup>

Phantom section: Flat Section

#### DASY5 Configuration:

- Probe: EX3DV4 – SN7380; ConvF(7.35, 7.35, 7.35); Calibrated: June 21, 2023;
- Sensor-Surface: 4mm (Mechanical Surface Detection)
- Electronics: DAE3 Sn428; Calibrated: Aug.30,2023;
- Phantom: SAM 1; Type: SAM;
- Measurement SW: DASY52, Version 52.8 (2); SEMCAD X Version 14.6.10 (7164)

**Area Scan (91x101x1):** Interpolated grid: dx=1.200 mm, dy=1.200 mm

Maximum value of SAR (interpolated) = 20.6 W/kg

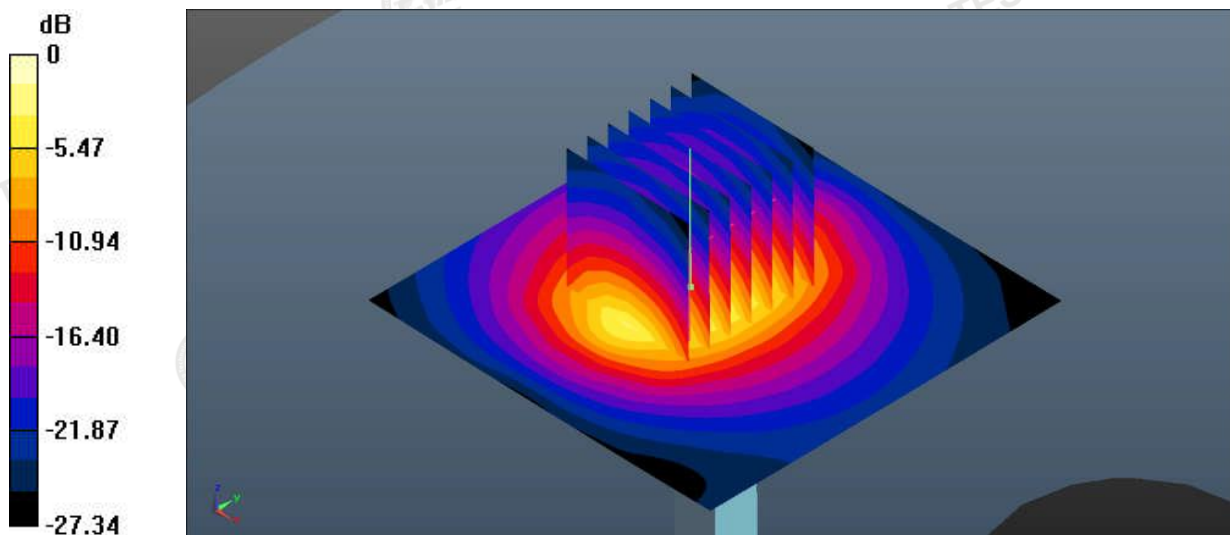
**Zoom Scan (7x7x7)/Cube 0:** Measurement grid: dx=5mm, dy=5mm, dz=5mm

Reference Value = 107.1 V/m; Power Drift = 0.10 dB

Peak SAR (extrapolated) = 28.4 W/kg

**SAR(1 g) = 14.33 W/kg; SAR(10 g) = 6.15 W/kg**

Maximum value of SAR (measured) = 20.3 W/kg



0 dB = 20.3 W/kg

System Performance Check 2600MHz 250mW

## Appendix C. Plots of SAR Test Data

### #1.

Date: 04/22/2024

#### GSM850\_GPRS 4TX slot\_Back side\_0mm\_Ch251

Communication System: UID 0, GSM (0); Frequency: 848.8 MHz; Duty Cycle: 1:1

Medium parameters used (interpolated):  $f = 848.8$  MHz;  $\sigma = 0.891$  S/m;  $\epsilon_r = 41.662$ ;  $\rho = 1000$  kg/m<sup>3</sup>

Phantom section: Right Section

#### DASY5 Configuration:

- Probe: EX3DV4 - SN7380; ConvF(9.62, 9.62, 9.62); Calibrated: June 21, 2023;
- Sensor-Surface: 4mm (Mechanical Surface Detection)
- Electronics: DAE3 Sn428; Calibrated: Aug.30,2023;
- Phantom: SAM 1; Type: SAM;
- Measurement SW: DASY52, Version 52.8 (2); SEMCAD X Version 14.6.10 (7164)

**Area Scan (41x41x1):** Interpolated grid: dx=1.500 mm, dy=1.500 mm

Maximum value of SAR (interpolated) = 0.887 W/kg

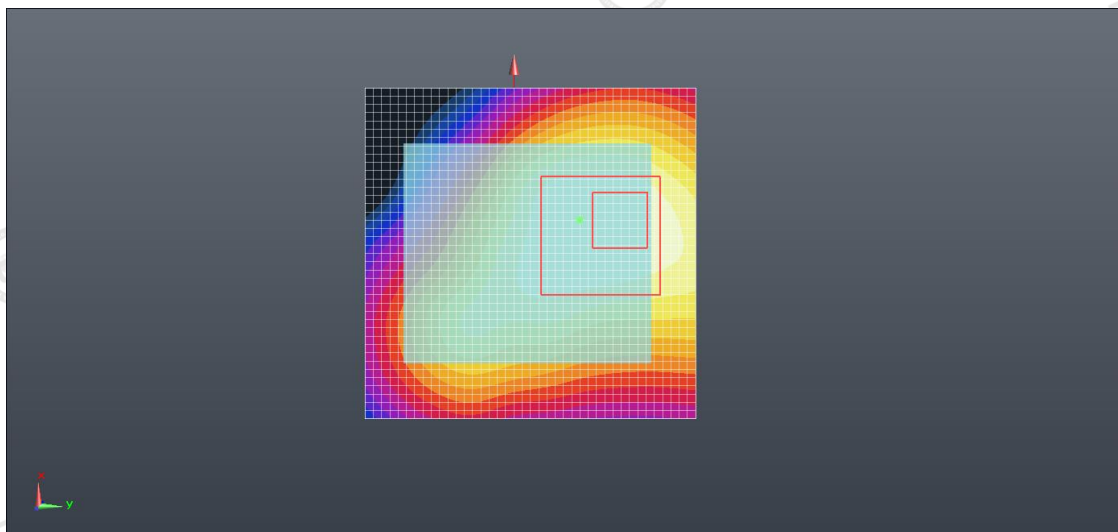
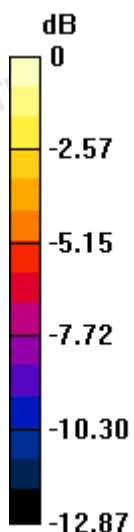
**Zoom Scan (5x5x7)/Cube 0:** Measurement grid: dx=8mm, dy=8mm, dz=5mm

Reference Value = 22.41 V/m; Power Drift = -0.05 dB

Peak SAR (extrapolated) = 1.55 W/kg

**SAR(1 g) = 0.912 W/kg; SAR(10 g) = 0.494 W/kg**

Maximum value of SAR (measured) = 1.01 W/Kg



0 db = 1.01 W/Kg



#2.

Date: 04/24/2024

**GSM1900\_GPRS 3TX slot\_Back side\_0mm\_Ch512**

Communication System: UID 0, GSM (0); Frequency: 1850.2 MHz; Duty Cycle: 1:1

Medium parameters used (interpolated):  $f = 1850.2$  MHz;  $\sigma = 1.407$  S/m;  $\epsilon_r = 39.320$ ;  $\rho = 1000$  kg/m<sup>3</sup>

Phantom section: Flat Section

**DASY5 Configuration:**

- Probe: EX3DV4 - SN7380; ConvF(8.05, 8.05, 8.05); Calibrated: June 21, 2023;
- Sensor-Surface: 4mm (Mechanical Surface Detection)
- Electronics: DAE3 Sn428; Calibrated: Aug.30,2023;
- Phantom: SAM 1; Type: SAM;
- Measurement SW: DASY52, Version 52.8 (2); SEMCAD X Version 14.6.10 (7164)

**Area Scan (41x41x1):** Interpolated grid: dx=1.500 mm, dy=1.500 mm

Maximum value of SAR (interpolated) = 3.34 W/kg

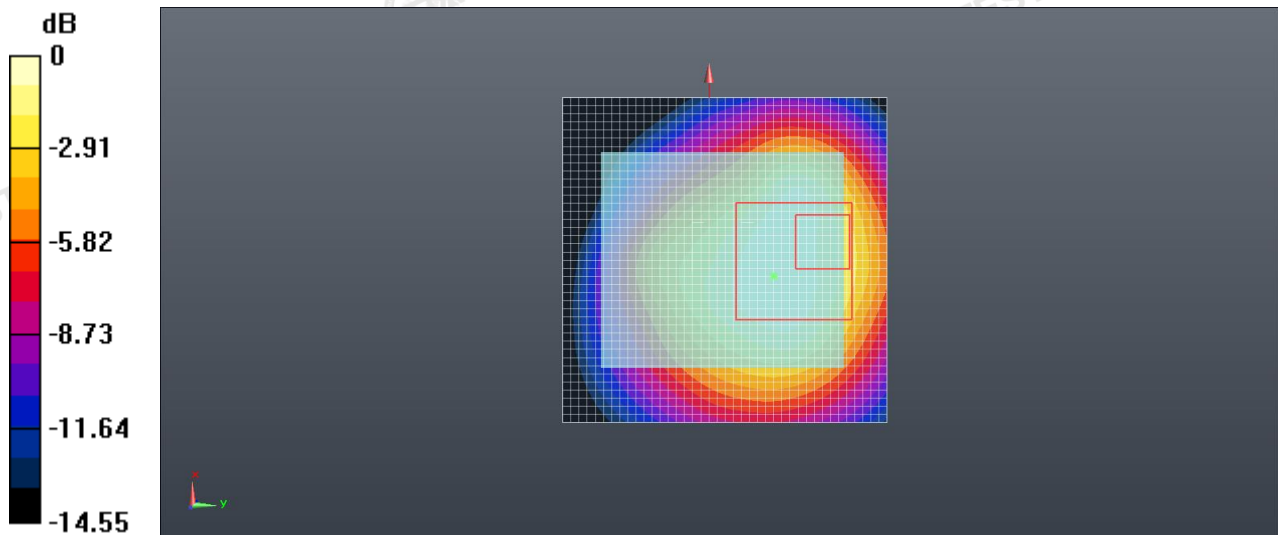
**Zoom Scan (5x5x7)/Cube 0:** Measurement grid: dx=8mm, dy=8mm, dz=5mm

Reference Value = 26.22 V/m; Power Drift = -0.09 dB

Peak SAR (extrapolated) = 4.62 W/kg

**SAR(1 g) = 2.85 W/kg; SAR(10 g) = 1.554 W/kg**

Maximum value of SAR (measured) = 3.22 W/Kg



0 db = 3.22 W/Kg



#3.

Date: 04/24/2024

**WCDMA II\_RMC 12.2Kbps\_Back side\_0mm\_Ch9400**

Communication System: UID 0, WCDMA (0); Frequency: 1880.0 MHz; Duty Cycle: 1:1

Medium parameters used (interpolated):  $f = 1880.0$  MHz;  $\sigma = 1.428$  S/m;  $\epsilon_r = 40.700$ ;  $\rho = 1000$  kg/m<sup>3</sup>

Phantom section: Flat Section

**DASY5 Configuration:**

- Probe: EX3DV4 - SN7380; ConvF(8.05, 8.05, 8.05); Calibrated: June 21, 2023;
- Sensor-Surface: 4mm (Mechanical Surface Detection)
- Electronics: DAE3 Sn428; Calibrated: Aug.30,2023;
- Phantom: SAM 1; Type: SAM;
- Measurement SW: DASY52, Version 52.8 (2); SEMCAD X Version 14.6.10 (7164)

**Area Scan (41x41x1):** Interpolated grid: dx=1.500 mm, dy=1.500 mm

Maximum value of SAR (interpolated) = 3.77 W/kg

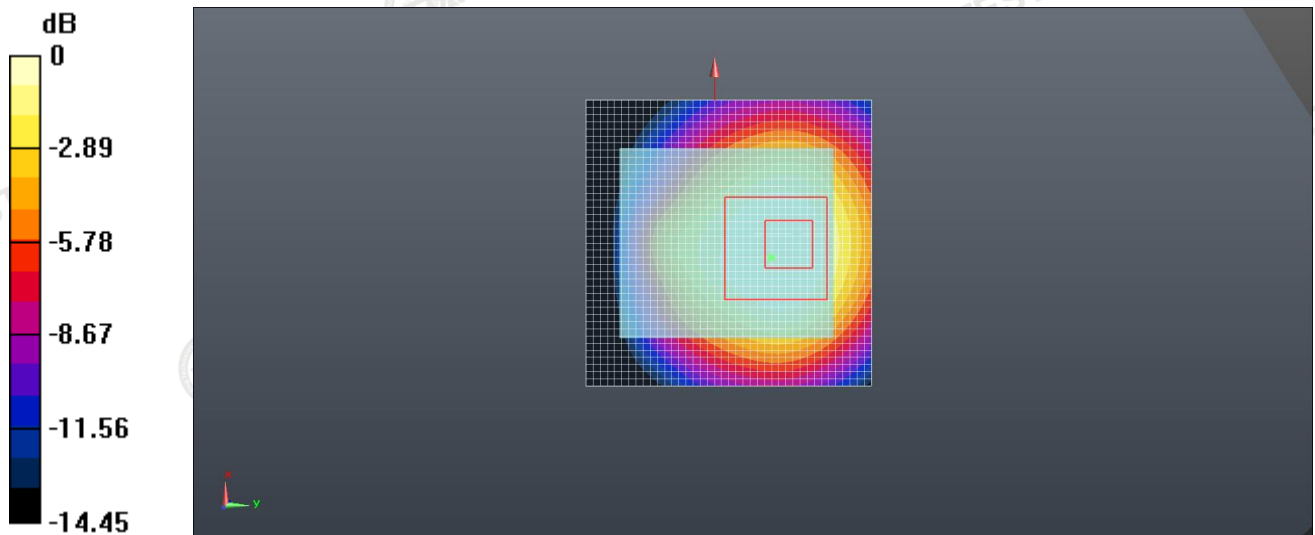
**Zoom Scan (5x5x7)/Cube 0:** Measurement grid: dx=8mm, dy=8mm, dz=5mm

Reference Value = 30.21 V/m; Power Drift = -0.07 dB

Peak SAR (extrapolated) = 4.87 W/kg

**SAR(1 g) = 2.754 W/kg; SAR(10 g) = 1.672 W/kg**

Maximum value of SAR (measured) = 3.56 W/Kg



0 db = 3.56 W/Kg

#4.

Date: 04/22/2024

**WCDMA V\_RMC 12.2Kbps\_Back side\_0mm\_Ch4183**

Communication System: UID 0, WCDMA (0); Frequency: 836.6 MHz; Duty Cycle: 1:1

Medium parameters used (interpolated):  $f = 836.6$  MHz;  $\sigma = 0.889$  S/m;  $\epsilon_r = 41.542$ ;  $\rho = 1000$  kg/m<sup>3</sup>

Phantom section: Flat Section

**DASY5 Configuration:**

- Probe: EX3DV4 - SN7380; ConvF(9.62, 9.62, 9.62); Calibrated: June 21, 2023;
- Sensor-Surface: 4mm (Mechanical Surface Detection)
- Electronics: DAE3 Sn428; Calibrated: Aug.30,2023;
- Phantom: SAM 1; Type: SAM;
- Measurement SW: DASY52, Version 52.8 (2); SEMCAD X Version 14.6.10 (7164)

**Area Scan (41x41x1):** Interpolated grid: dx=1.500 mm, dy=1.500 mm

Maximum value of SAR (interpolated) = 3.22 W/kg

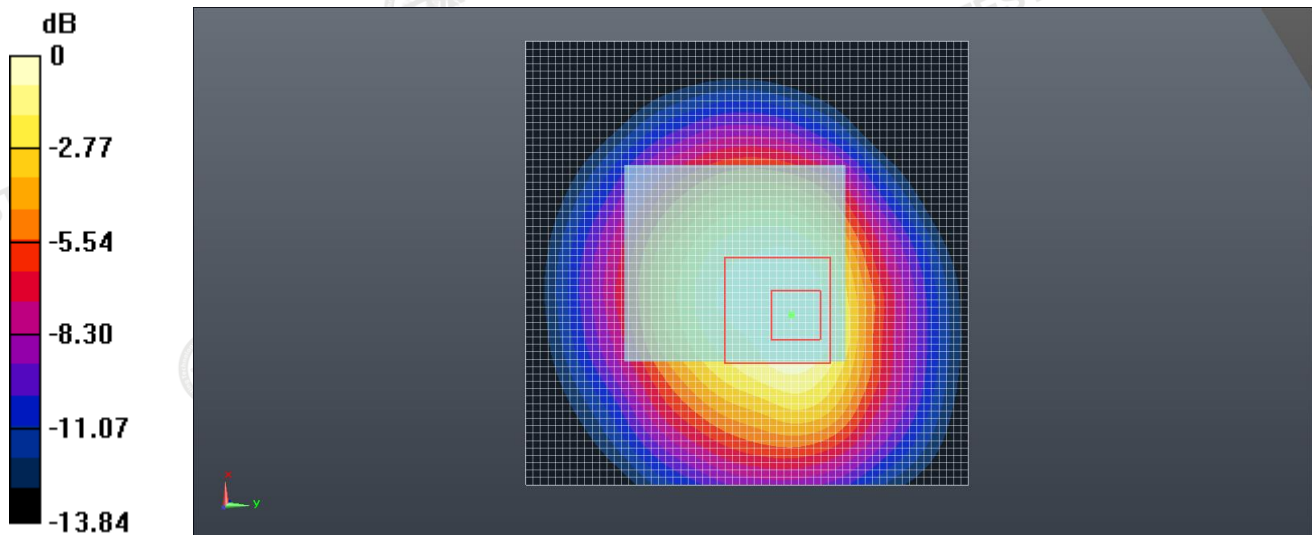
**Zoom Scan (5x5x7)/Cube 0:** Measurement grid: dx=8mm, dy=8mm, dz=5mm

Reference Value = 21.32 V/m; Power Drift = -0.03 dB

Peak SAR (extrapolated) = 4.52 W/kg

**SAR(1 g) = 2.74 W/kg; SAR(10 g) = 1.465 W/kg**

Maximum value of SAR (measured) = 3.15 W/Kg



0 db = 3.15 W/Kg

#5.

Date: 04/24/2024

**LTE Band 2\_20M\_QPSK\_1RB#49\_Back side\_0mm\_Ch18900**

Communication System: UID 0, Generic LTE (0); Frequency: 1880.0 MHz; Duty Cycle: 1:1

Medium parameters used (interpolated):  $f = 1880.0$  MHz;  $\sigma = 1.374$  S/m;  $\epsilon_r = 38.880$ ;  $\rho = 1000$  kg/m<sup>3</sup>

Phantom section: Flat Section

**DASY5 Configuration:**

- Probe: EX3DV4 - SN7380; ConvF(8.05, 8.05, 8.05); Calibrated: June 21, 2023;
- Sensor-Surface: 4mm (Mechanical Surface Detection)
- Electronics: DAE3 Sn428; Calibrated: Aug.30,2023;
- Phantom: SAM 1; Type: SAM;
- Measurement SW: DASY52, Version 52.8 (2); SEMCAD X Version 14.6.10 (7164)

**Area Scan (41x41x1):** Interpolated grid: dx=1.500 mm, dy=1.500 mm

Maximum value of SAR (interpolated) = 3.05 W/kg

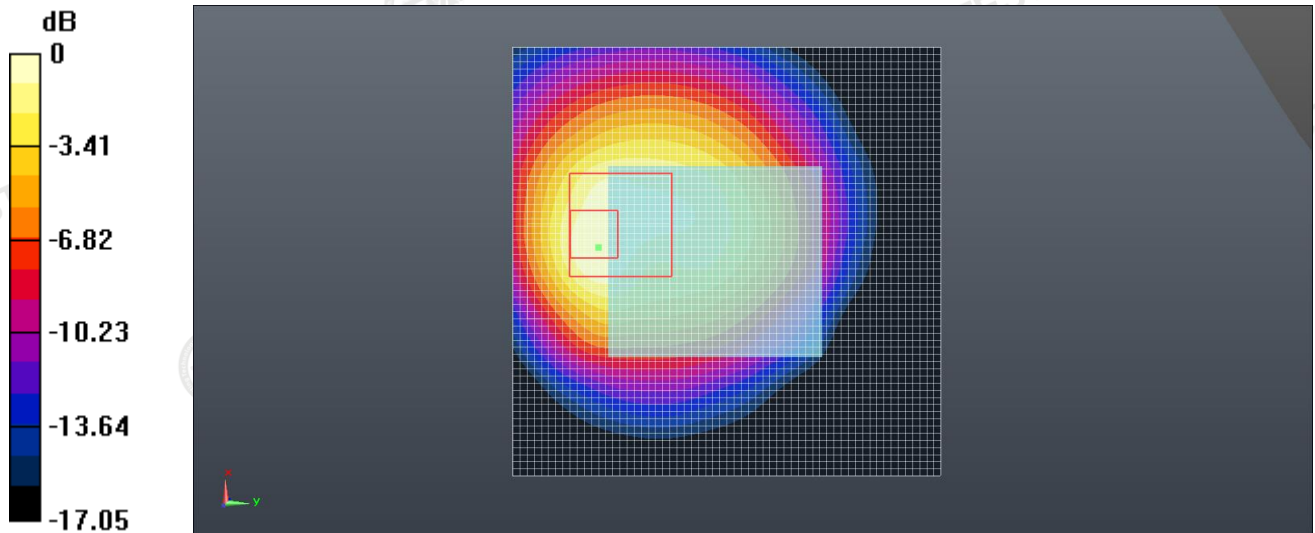
**Zoom Scan (5x5x7)/Cube 0:** Measurement grid: dx=8mm, dy=8mm, dz=5mm

Reference Value = 22.36 V/m; Power Drift = -0.05 dB

Peak SAR (extrapolated) = 3.95 W/kg

**SAR(1 g) = 2.67 W/kg; SAR(10 g) = 1.351 W/kg**

Maximum value of SAR (measured) = 3.07 W/Kg



0 db = 3.07 W/Kg

#6.

Date: 04/23/2024

**LTE Band 4\_20M\_QPSK\_1RB#49\_Back side\_0mm\_Ch20175**

Communication System: UID 0, LTE (0); Frequency: 1747.5 MHz; Duty Cycle: 1:1

Medium parameters used (interpolated):  $f = 1747.5$  MHz;  $\sigma = 1.341$  S/m;  $\epsilon_r = 40.894$ ;  $\rho = 1000$  kg/m<sup>3</sup>

Phantom section: Flat Section

**DASY5 Configuration:**

- Probe: EX3DV4 - SN7380; ConvF(8.35, 8.35, 8.35); Calibrated: June 21, 2023
- Sensor-Surface: 2mm (Mechanical Surface Detection)
- Electronics: DAE3 Sn428; Calibrated: Aug.30,2023;
- Phantom: SAM 1; Type: SAM;
- Measurement SW: DASY52, Version 52.8 (2); SEMCAD X Version 14.6.10 (7164)

**Area Scan (41x41x1):** Interpolated grid: dx=1.500 mm, dy=1.500 mm

Maximum value of SAR (interpolated) = 2.05 W/kg

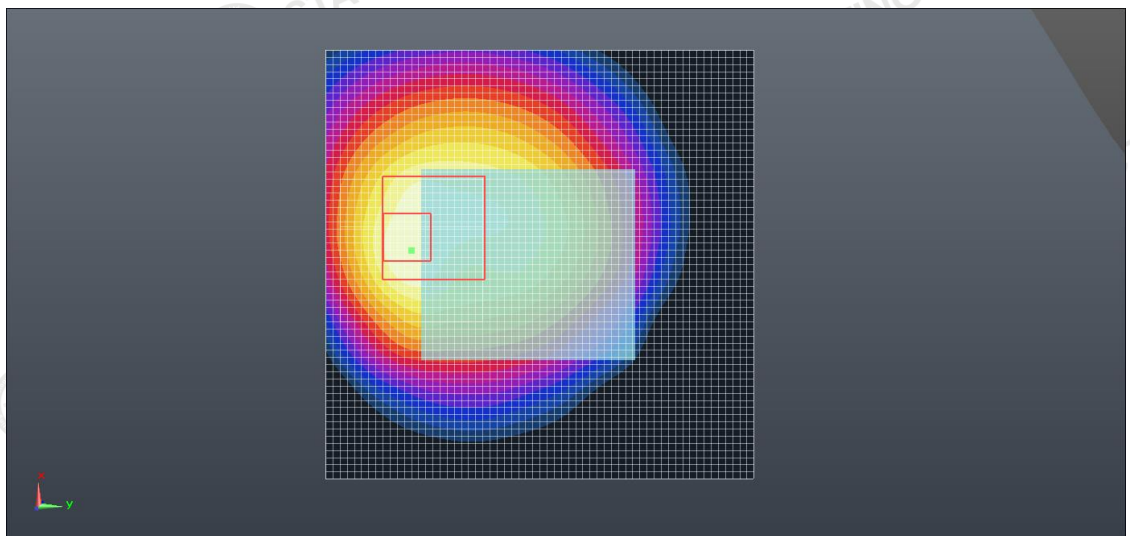
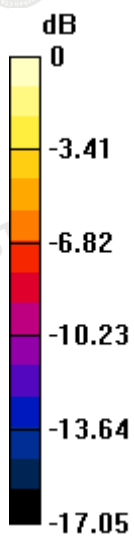
**Zoom Scan (5x5x7)/Cube 0:** Measurement grid: dx=8mm, dy=8mm, dz=5mm

Reference Value = 22.36 V/m; Power Drift = -0.07 dB

Peak SAR (extrapolated) = 2.88 W/kg

**SAR(1 g) = 1.857 W/kg; SAR(10 g) = 1.145 W/kg**

Maximum value of SAR (measured) = 2.32 W/Kg



0 db = 2.32 W/Kg

#7.

Date: 04/22/2024

**LTE Band 5\_10M\_QPSK\_1RB#0\_Back side\_0mm\_Ch20600**

Communication System: UID 0, LTE (0); Frequency: 844.0 MHz; Duty Cycle: 1:1

Medium parameters used (interpolated):  $f = 844.0$  MHz;  $\sigma = 0.884$  S/m;  $\epsilon_r = 41.235$ ;  $\rho = 1000$  kg/m<sup>3</sup>

Phantom section: Flat Section

**DASY5 Configuration:**

- Probe: EX3DV4 - SN7380; ConvF(9.62, 9.62, 9.62); Calibrated: June 21, 2023;
- Sensor-Surface: 4mm (Mechanical Surface Detection)
- Electronics: DAE3 Sn428; Calibrated: Aug.30,2023;
- Phantom: SAM 1; Type: SAM;
- Measurement SW: DASY52, Version 52.8 (2); SEMCAD X Version 14.6.10 (7164)

**Area Scan (41x41x1):** Interpolated grid: dx=1.500 mm, dy=1.500 mm

Maximum value of SAR (interpolated) = 2.64 W/kg

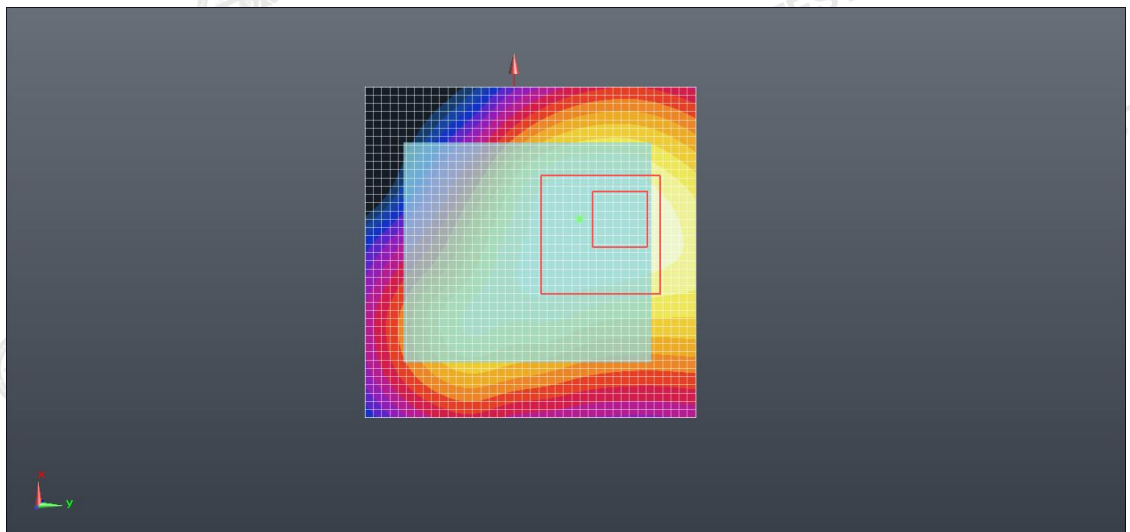
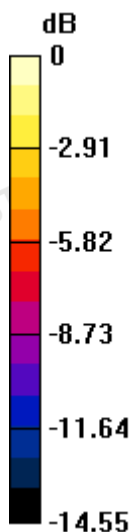
**Zoom Scan (5x5x7)/Cube 0:** Measurement grid: dx=8mm, dy=8mm, dz=5mm

Reference Value = 22.32 V/m; Power Drift = -0.05 dB

Peak SAR (extrapolated) = 3.77 W/kg

**SAR(1 g) = 2.41 W/kg; SAR(10 g) = 1.229 W/kg**

Maximum value of SAR (measured) = 2.88 W/Kg



0 db = 2.88 W/Kg



#8.

Date: 04/25/2024

LTE Band 7\_20M\_QPSK\_1RB#99\_Back side\_0mm\_Ch21100

Communication System: UID 0, LTE (0); Frequency: 2535.0 MHz;Duty Cycle: 1:1

Medium parameters used (interpolated):  $f = 2535.0$  MHz;  $\sigma = 1.962$  S/m;  $\epsilon_r = 39.862$ ;  $\rho = 1000$  kg/m<sup>3</sup>

Phantom section: Flat Section

DASY5 Configuration:

- Probe: EX3DV4 - SN7380; ConvF(7.35, 7.35, 7.35); Calibrated: June 21, 2023;
- Sensor-Surface: 2mm (Mechanical Surface Detection)
- Electronics: DAE3 Sn428; Calibrated: Aug.30,2023;
- Phantom: SAM 1; Type: SAM;
- Measurement SW: DASY52, Version 52.8 (2); SEMCAD X Version 14.6.10 (7164)

Area Scan (61x61x1): Interpolated grid: dx=1.200 mm, dy=1.200 mm

Maximum value of SAR (interpolated) = 2.21 W/kg

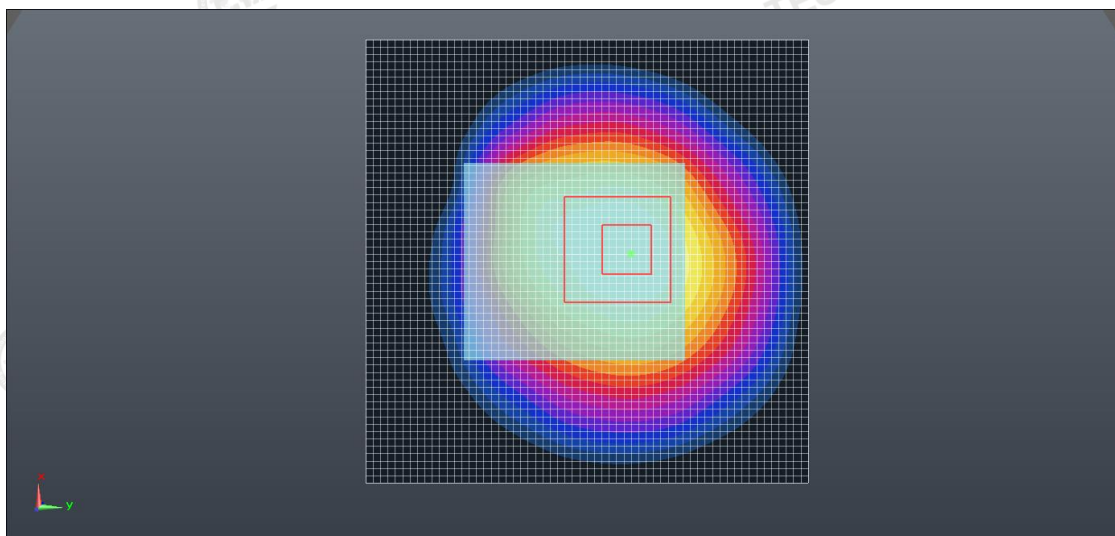
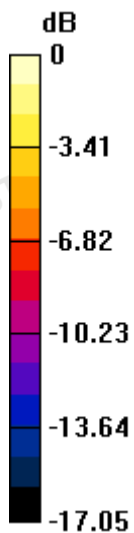
Zoom Scan (7x7x7)/Cube 0: Measurement grid: dx=5mm, dy=5mm, dz=5mm

Reference Value = 20.15 V/m; Power Drift = -0.07 dB

Peak SAR (extrapolated) = 4.25 W/kg

SAR(1 g) = 2.11 W/kg; SAR(10 g) = 1.124 W/kg

Maximum value of SAR (measured) =2.98 W/Kg



0 db = 2.98 W/Kg



#9.

Date: 04/21/2024

**LTE Band 17\_10M\_QPSK\_1RB#25\_Back side\_0mm\_Ch23800**

Communication System: UID 0, LTE (0); Frequency: 711.0 MHz; Duty Cycle: 1:1

Medium parameters used (interpolated):  $\epsilon = 711.0$  MHz;  $\sigma = 0.895$  S/m;  $\epsilon_r = 41.256$ ;  $\rho = 1000$  kg/m<sup>3</sup>

Phantom section: Flat Section

**DASY5 Configuration:**

- Probe: EX3DV4 - SN7380; ConvF(10.02, 10.02, 10.02) ; Calibrated: 6/21/2023
- Sensor-Surface: 1.4mm (Mechanical Surface Detection)
- Electronics: DAE3 Sn428; Calibrated: 08/30/2023
- Phantom: Twin-SAM V8.0 ; Type: QD 000 P41 AA; Serial: 1974
- DASY52 52.10.2(1495); SEMCAD X 14.6.12(7450)

**Area Scan (41x41x1):** Interpolated grid: dx=1.500 mm, dy=1.500 mm

Maximum value of SAR (interpolated) = 2.05 W/kg

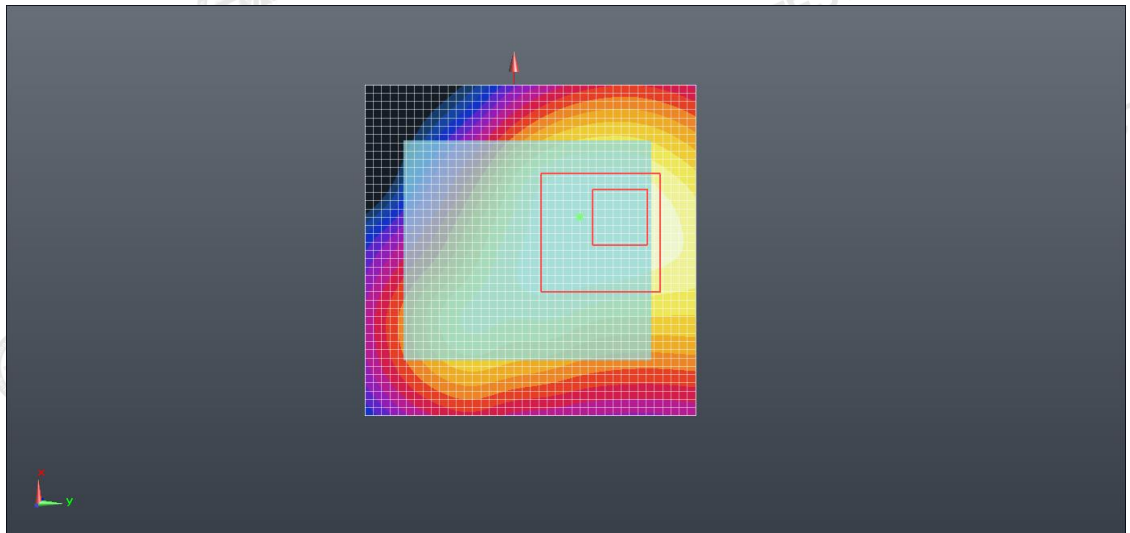
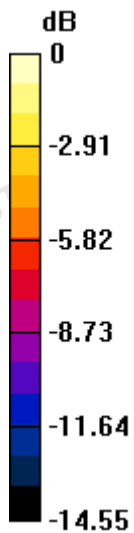
**Zoom Scan (5x5x7)/Cube 0:** Measurement grid: dx=8mm, dy=8mm, dz=5mm

Reference Value = 20.41 V/m; Power Drift = -0.04 dB

Peak SAR (extrapolated) = 2.74 W/kg

**SAR(1 g) = 1.755 W/kg; SAR(10 g) = 1.044 W/kg**

Maximum value of SAR (measured) = 1.80 W/Kg



0 db = 1.80 W/Kg

#10.

Date: 04/25/2024

LTE Band 41\_20M\_QPSK\_1RB#49\_Back side\_0mm\_Ch40590

Communication System: UID 0, LTE (0); Frequency: 2590.0 MHz; Duty Cycle: 1:1

Medium parameters used (interpolated):  $\omega = 2590.0$  MHz;  $\sigma = 1.984$  S/m;  $\epsilon_r = 38.676$ ;  $\rho = 1000$  kg/m<sup>3</sup>

Phantom section: Flat Section

DASY5 Configuration:

- Probe: EX3DV4 - SN7380; ConvF(7.35, 7.35, 7.35); Calibrated: June 21, 2023
- Sensor-Surface: 2mm (Mechanical Surface Detection)
- Electronics: DAE3 Sn428; Calibrated: Aug.30,2023;
- Phantom: SAM 1; Type: SAM;
- Measurement SW: DASY52, Version 52.8 (2); SEMCAD X Version 14.6.10 (7164)

Area Scan (61x61x1): Interpolated grid: dx=1.200 mm, dy=1.200 mm

Maximum value of SAR (interpolated) = 3.14 W/kg

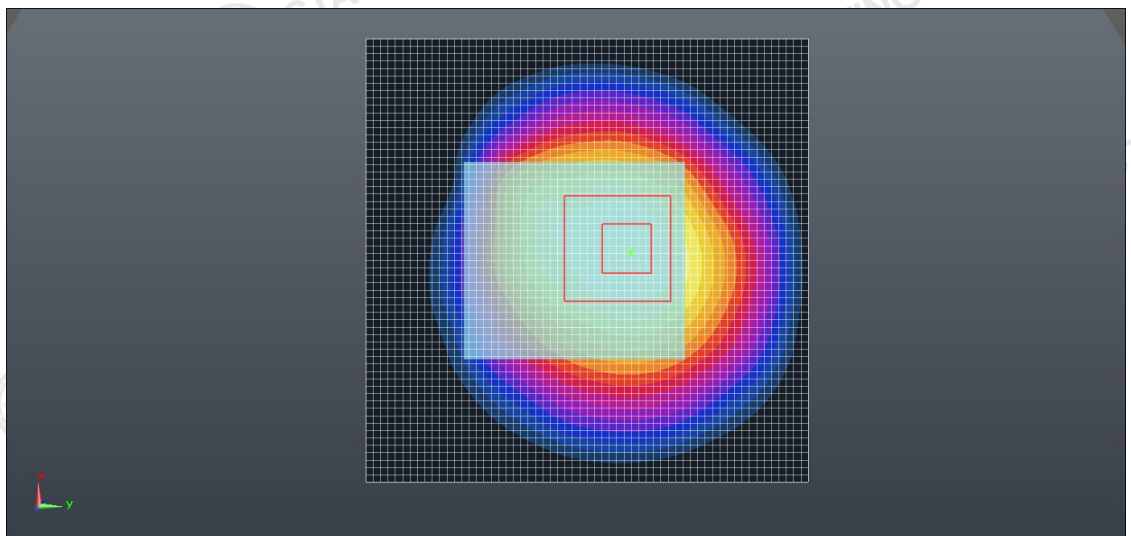
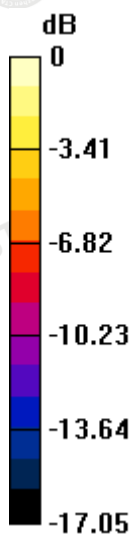
Zoom Scan (7x7x7)/Cube 0: Measurement grid: dx=5mm, dy=5mm, dz=5mm

Reference Value = 25.01 V/m; Power Drift = -0.01 dB

Peak SAR (extrapolated) = 3.75 W/kg

SAR(1 g) = 2.84 W/kg; SAR(10 g) = 1.622 W/kg

Maximum value of SAR (measured) = 3.01 W/Kg



0 db = 3.01 W/Kg

#11.

Date: 04/28/2024

**WLAN2.4GHz\_802.11b 1Mbps\_Back side\_0mm\_Ch06**

Communication System: UID 0, WIFI (0); Frequency: 2437.0 MHz; Duty Cycle: 1:1

Medium parameters used (interpolated):  $f = 2437.0$  MHz;  $\sigma = 1.829$  S/m;  $\epsilon_r = 38.440$ ;  $\rho = 1000$  kg/m<sup>3</sup>

Phantom section: Flat Section

**DASY5 Configuration:**

- Probe: EX3DV4 - SN7380; ConvF(7.50, 7.50, 7.50); Calibrated: June 21, 2023
- Sensor-Surface: 2mm (Mechanical Surface Detection)
- Electronics: DAE3 Sn428; Calibrated: Aug.30,2023;
- Phantom: SAM 1; Type: SAM;
- Measurement SW: DASY52, Version 52.8 (2); SEMCAD X Version 14.6.10 (7164)

**Area Scan (41x41x1):** Interpolated grid: dx=1.200 mm, dy=1.200 mm

Maximum value of SAR (interpolated) = 0.455 W/kg

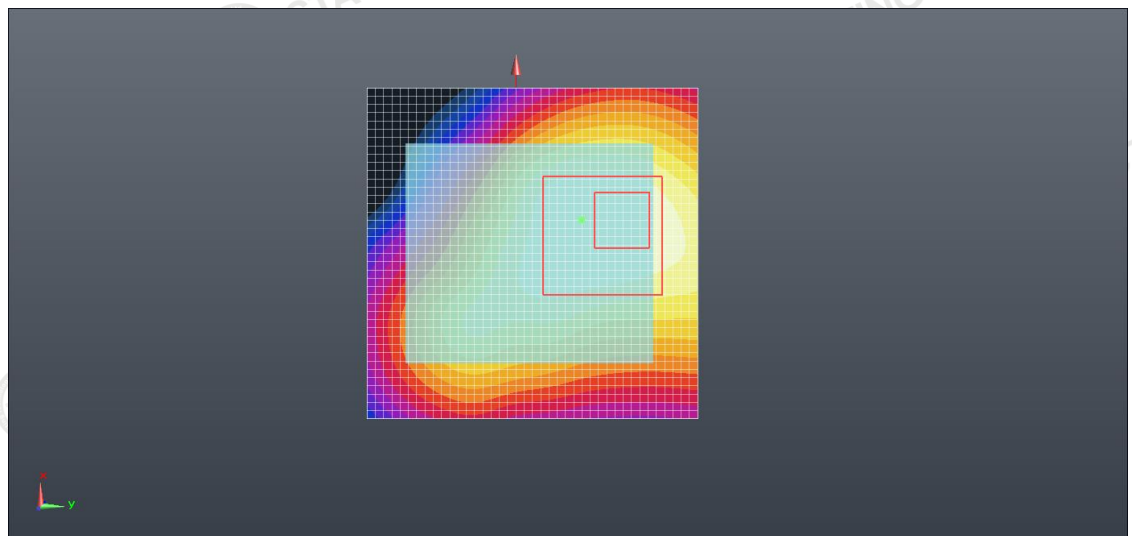
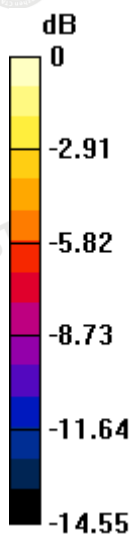
**Zoom Scan (7x7x7)/Cube 0:** Measurement grid: dx=5mm, dy=5mm, dz=5mm

Reference Value = 3.55 V/m; Power Drift = -0.03 dB

Peak SAR (extrapolated) = 0.766W/kg


**SAR(1 g) = 0.411 W/kg; SAR(10 g) = 0.201 W/kg**

Maximum value of SAR (measured) = 0.332 W/Kg




0 db = 2.88 W/Kg

# Appendix D. DASY System Calibration Certificate




**TTL**  
In Collaboration with  
**s p e a g**  
CALIBRATION LABORATORY

Address: No.52 HuaYuanBei Road, Haidian District, Beijing, 100191, China  
Tel: +86-10-62304633-2117  
E-mail: cmf@caict.ac.cn http://www.caict.ac.cn



中国认可  
国际互认  
校准  
CALIBRATION  
CNAS L0570



**CAICT**

Client: **ruixiang** Certificate No: **J23Z60276**

### CALIBRATION CERTIFICATE

Object: EX3DV4 - SN : 7380

Calibration Procedure(s): FF-Z11-004-02  
Calibration Procedures for Dosimetric E-field Probes

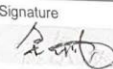
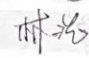

Calibration date: June 21, 2023

This calibration Certificate documents the traceability to national standards, which realize the physical units of measurements(SI). The measurements and the uncertainties with confidence probability are given on the following pages and are part of the certificate.

All calibrations have been conducted in the closed laboratory facility: environment temperature(22±3)°C and humidity<70%.

Calibration Equipment used (M&TE critical for calibration)

Primary Standards	ID #	Cal Date(Calibrated by, Certificate No.)	Scheduled Calibration
Power Meter NRP2	101919	12-Jun-23(CTTL, No.J23X05435)	Jun-24
Power sensor NRP-Z91	101547	12-Jun-23(CTTL, No.J23X05435)	Jun-24
Power sensor NRP-Z91	101548	12-Jun-23(CTTL, No.J23X05435)	Jun-24
Reference 10dBAAttenuator	18N50W-10dB	19-Jan-23(CTTL, No.J23X00212)	Jan-25
Reference 20dBAAttenuator	18N50W-20dB	19-Jan-23(CTTL, No.J23X00211)	Jan-25
Reference Probe EX3DV4	SN 7517	27-Jan-23(SPEAG, No.EX-7517_Jan23)	Jan-24
DAE4	SN 1555	25-Aug-22(SPEAG, No DAE4-1555_Aug22)	Aug-23
Secondary Standards	ID #	Cal Date(Calibrated by, Certificate No.)	Scheduled Calibration
SignalGenerator MG3700A	6201052605	12-Jun-23(CTTL, No.J23X05434)	Jun-24
Network Analyzer E5071C	MY46110673	10-Jan-23(CTTL, No.J23X00104)	Jan-24
Reference 10dBAAttenuator	BT0520	11-May-23(CTTL, No.J23X04061)	May-25
Reference 20dBAAttenuator	BT0267	11-May-23(CTTL, No.J23X04062)	May-25
OCF DAK-3.5	SN 1040	18-Jan-23(SPEAG, No.OCP-DAK3.5-1040_Jan23)	Jan-24

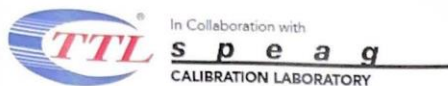
	Name	Function	Signature
Calibrated by:	Yu Zongying	SAR Test Engineer	
Reviewed by:	Lin Hao	SAR Test Engineer	
Approved by:	Qi Dianyuan	SAR Project Leader	

Issued: June 27, 2023

This calibration certificate shall not be reproduced except in full without written approval of the laboratory.

Certificate No: J23Z60276 Page 1 of 9





Add: No.52 HuaYuanBei Road, Haidian District, Beijing, 100191, China  
Tel: +86-10-62304633-2117  
E-mail: emf@caict.ac.cn <http://www.caict.ac.cn>

#### Glossary:

TSL	tissue simulating liquid
NORM <sub>x,y,z</sub>	sensitivity in free space
ConvF	sensitivity in TSL / NORM <sub>x,y,z</sub>
DCP	diode compression point
CF	crest factor (1/duty_cycle) of the RF signal
A,B,C,D	modulation dependent linearization parameters
Polarization $\Phi$	$\Phi$ rotation around probe axis
Polarization $\theta$	$\theta$ rotation around an axis that is in the plane normal to probe axis (at measurement center), $\theta=0$ is normal to probe axis
Connector Angle	information used in DASY system to align probe sensor X to the robot coordinate system

#### Calibration is Performed According to the Following Standards:

- IEEE Std 1528-2013, "IEEE Recommended Practice for Determining the Peak Spatial-Averaged Specific Absorption Rate (SAR) in the Human Head from Wireless Communications Devices: Measurement Techniques", June 2013
- IEC 62209-1, "Measurement procedure for the assessment of Specific Absorption Rate (SAR) from hand-held and body-mounted devices used next to the ear (frequency range of 300 MHz to 6 GHz)", July 2016
- IEC 62209-2, "Procedure to determine the Specific Absorption Rate (SAR) for wireless communication devices used in close proximity to the human body (frequency range of 30 MHz to 6 GHz)", March 2010
- KDB 865664, "SAR Measurement Requirements for 100 MHz to 6 GHz"

#### Methods Applied and Interpretation of Parameters:

- NORM<sub>x,y,z</sub>:** Assessed for E-field polarization  $\theta=0$  ( $f \leq 900\text{MHz}$  in TEM-cell;  $f > 1800\text{MHz}$ : waveguide). NORM<sub>x,y,z</sub> are only intermediate values, i.e., the uncertainties of NORM<sub>x,y,z</sub> does not effect the  $E^2$ -field uncertainty inside TSL (see below ConvF).
- NORM(f)<sub>x,y,z</sub> = NORM<sub>x,y,z</sub> \* frequency\_response** (see Frequency Response Chart). This linearization is implemented in DASY4 software versions later than 4.2. The uncertainty of the frequency response is included in the stated uncertainty of ConvF.
- DCP<sub>x,y,z</sub>:** DCP are numerical linearization parameters assessed based on the data of power sweep (no uncertainty required). DCP does not depend on frequency nor media.
- PAR:** PAR is the Peak to Average Ratio that is not calibrated but determined based on the signal characteristics.
- A<sub>x,y,z</sub>; B<sub>x,y,z</sub>; C<sub>x,y,z</sub>; VR<sub>x,y,z</sub>; A,B,C** are numerical linearization parameters assessed based on the data of power sweep for specific modulation signal. The parameters do not depend on frequency nor media. VR is the maximum calibration range expressed in RMS voltage across the diode.
- ConvF and Boundary Effect Parameters:** Assessed in flat phantom using E-field (or Temperature Transfer Standard for  $f \leq 800\text{MHz}$ ) and inside waveguide using analytical field distributions based on power measurements for  $f > 800\text{MHz}$ . The same setups are used for assessment of the parameters applied for boundary compensation (alpha, depth) of which typical uncertainty valued are given. These parameters are used in DASY4 software to improve probe accuracy close to the boundary. The sensitivity in TSL corresponds to NORM<sub>x,y,z</sub> \* ConvF whereby the uncertainty corresponds to that given for ConvF. A frequency dependent ConvF is used in DASY version 4.4 and higher which allows extending the validity from  $\pm 50\text{MHz}$  to  $\pm 100\text{MHz}$ .
- Spherical isotropy (3D deviation from isotropy):** in a field of low gradients realized using a flat phantom exposed by a patch antenna.
- Sensor Offset:** The sensor offset corresponds to the offset of virtual measurement center from the probe tip (on probe axis). No tolerance required.
- Connector Angle:** The angle is assessed using the information gained by determining the NORM<sub>x</sub> (no uncertainty required).



In Collaboration with  
**s p e a g**  
 CALIBRATION LABORATORY



Add: No.52 HuaYuanBei Road, Haidian District, Beijing, 100191, China  
 Tel: +86-10-62304633-2117  
 E-mail: emf@caict.ac.cn http://www.caict.ac.cn

**DASY/EASY – Parameters of Probe: EX3DV4 – SN:7380**

**Basic Calibration Parameters**

	Sensor X	Sensor Y	Sensor Z	Unc (k=2)
Norm( $\mu\text{V}/(\text{V}/\text{m})^2$ ) <sup>A</sup>	0.44	0.35	0.41	$\pm 10.0\%$
DCP(mV) <sup>B</sup>	100.5	101.6	100.6	

**Modulation Calibration Parameters**

UID	Communication System Name		A dB	B dB $\mu\text{V}$	C	D dB	VR mV	Unc <sup>E</sup> (k=2)
0	CW	X	0.0	0.0	1.0	0.00	161.9	$\pm 2.2\%$
		Y	0.0	0.0	1.0		139.0	
		Z	0.0	0.0	1.0		149.3	

The reported uncertainty of measurement is stated as the standard uncertainty of Measurement multiplied by the coverage factor  $k=2$ , which for a normal distribution Corresponds to a coverage probability of approximately 95%.

<sup>A</sup> The uncertainties of Norm X, Y, Z do not affect the E<sup>2</sup>-field uncertainty inside TSL (see Page 4).  
<sup>B</sup> Numerical linearization parameter: uncertainty not required.  
<sup>E</sup> Uncertainty is determined using the max. deviation from linear response applying rectangular distribution and is expressed for the square of the field value.





In Collaboration with  
 Add: No.52 HuaYuanBei Road, Haidian District, Beijing, 100191, China  
 Tel: +86-10-62304633-2117  
 E-mail: emf@caict.ac.cn http://www.caict.ac.cn

**DASY/EASY – Parameters of Probe: EX3DV4 – SN:7380**

**Calibration Parameter Determined in Head Tissue Simulating Media**

f [MHz] <sup>C</sup>	Relative Permittivity <sup>F</sup>	Conductivity (S/m) <sup>F</sup>	ConvF X	ConvF Y	ConvF Z	Alpha <sup>G</sup>	Depth <sup>G</sup> (mm)	Unct. (k=2)
750	41.9	0.89	10.02	10.02	10.02	0.17	1.27	±12.7%
835	41.5	0.90	9.62	9.62	9.62	0.18	1.30	±12.7%
1750	40.1	1.37	8.35	8.35	8.35	0.28	1.02	±12.7%
1900	40.0	1.40	8.05	8.05	8.05	0.24	1.11	±12.7%
2100	39.8	1.49	8.00	8.00	8.00	0.24	1.11	±12.7%
2300	39.5	1.67	7.75	7.75	7.75	0.65	0.67	±12.7%
2450	39.2	1.80	7.50	7.50	7.50	0.65	0.69	±12.7%
2600	39.0	1.96	7.35	7.35	7.35	0.47	0.85	±12.7%
3500	37.9	2.91	6.85	6.85	6.85	0.41	1.03	±13.9%
3700	37.7	3.12	6.69	6.69	6.69	0.43	1.03	±13.9%
3900	37.5	3.32	6.58	6.58	6.58	0.30	1.50	±13.9%
4100	37.2	3.53	6.62	6.62	6.62	0.35	1.25	±13.9%
4200	37.1	3.63	6.52	6.52	6.52	0.30	1.45	±13.9%
4400	36.9	3.84	6.44	6.44	6.44	0.30	1.50	±13.9%
4600	36.7	4.04	6.41	6.41	6.41	0.35	1.48	±13.9%
4800	36.4	4.25	6.36	6.36	6.36	0.35	1.50	±13.9%
4950	36.3	4.40	5.95	5.95	5.95	0.35	1.55	±13.9%
5250	35.9	4.71	5.45	5.45	5.45	0.40	1.55	±13.9%
5600	35.5	5.07	4.86	4.86	4.86	0.45	1.40	±13.9%
5750	35.4	5.22	4.96	4.96	4.96	0.45	1.40	±13.9%

<sup>C</sup> Frequency validity above 300 MHz of ±100MHz only applies for DASY v4.4 and higher (Page 2), else it is restricted to ±50MHz. The uncertainty is the RSS of ConvF uncertainty at calibration frequency and the uncertainty for the indicated frequency band. Frequency validity below 300 MHz is ± 10, 25, 40, 50 and 70 MHz for ConvF assessments at 30, 64, 128, 150 and 220 MHz respectively. Above 5 GHz frequency validity can be extended to ± 110 MHz.

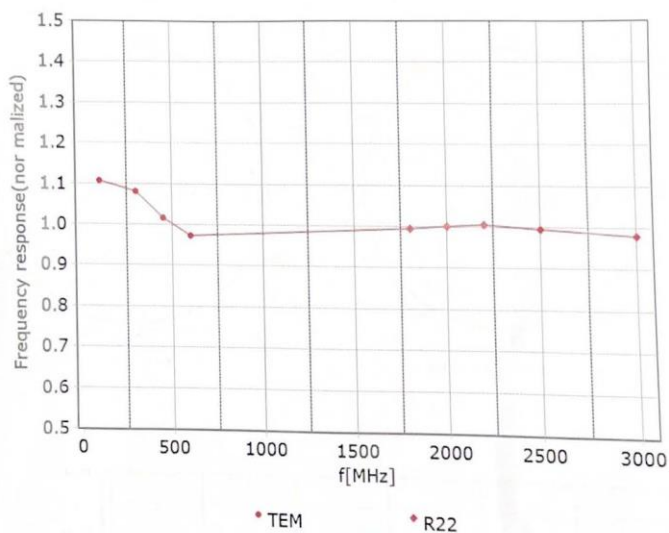
<sup>F</sup> At frequency up to 6 GHz, the validity of tissue parameters (ε and σ) can be relaxed to ±10% if liquid compensation formula is applied to measured SAR values. The uncertainty is the RSS of the ConvF uncertainty for indicated target tissue parameters.

<sup>G</sup> Alpha/Depth are determined during calibration. SPEAG warrants that the remaining deviation due to the boundary effect after compensation is always less than ± 1% for frequencies below 3 GHz and below ± 2% for the frequencies between 3-6 GHz at any distance larger than half the probe tip diameter from the boundary.

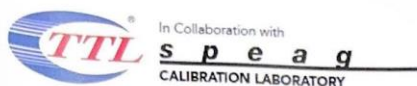


Add: No.52 HuaYuanBei Road, Haidian District, Beijing, 100191, China  
Tel: +86-10-62304633-2117  
E-mail: emf@caict.ac.cn <http://www.caict.ac.cn>

### Frequency Response of E-Field (TEM-Cell: ifi110 EXX, Waveguide: R22)



Uncertainty of Frequency Response of E-field:  $\pm 7.4\%$  ( $k=2$ )

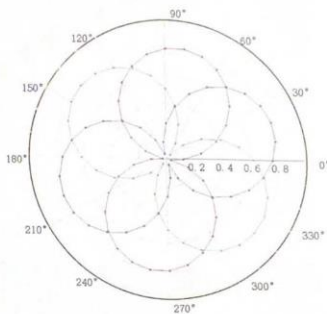
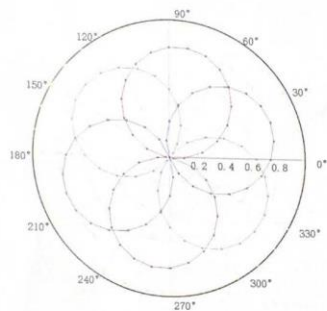


Add: No.52 HuaYuanBei Road, Haidian District, Beijing, 100191, China  
Tel: +86-10-62304633-2117  
E-mail: emf@caict.ac.cn http://www.caict.ac.cn

### Receiving Pattern ( $\Phi$ ), $\theta=0^\circ$

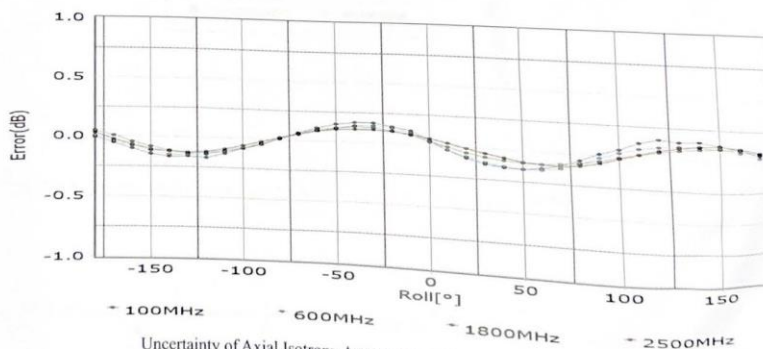
f=600 MHz, TEM

f=1800 MHz, R22

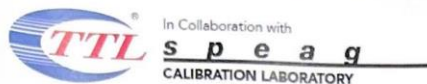


-- Tot -- X -- Y -- Z

-- Tot -- X -- Y -- Z

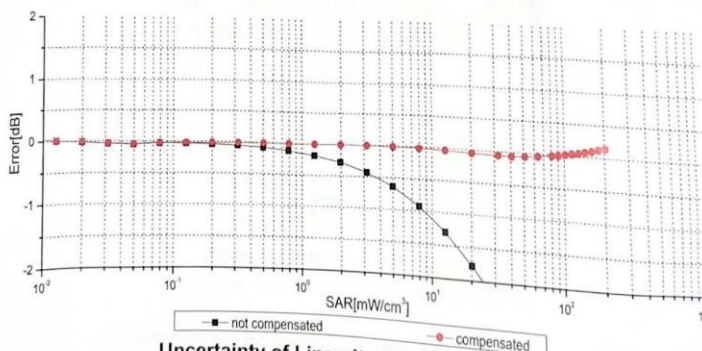
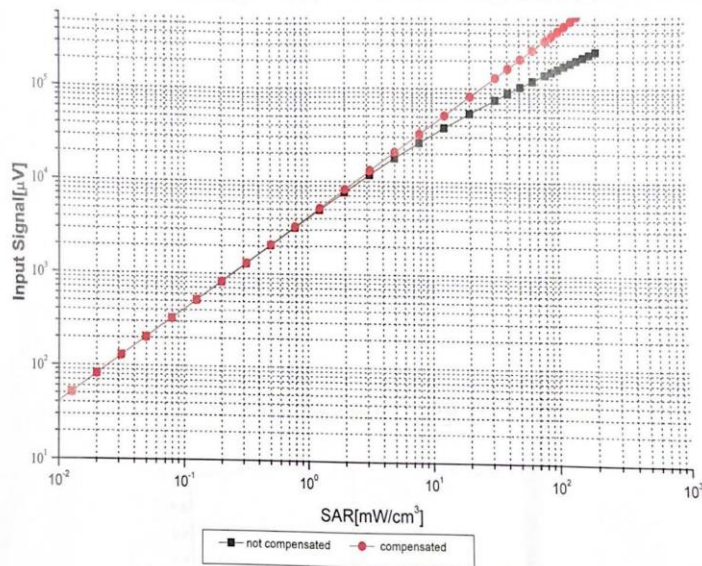


Uncertainty of Axial Isotropy Assessment:  $\pm 1.2\%$  ( $k=2$ )



Add: No.52 HuaYuanBei Road, Haidian District, Beijing, 100191, China  
Tel: +86-10-62304633-2117  
E-mail: emf@caict.ac.cn http://www.caict.ac.cn

### Dynamic Range f(SAR<sub>head</sub>) (TEM cell, f = 900 MHz)

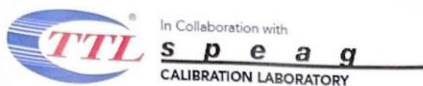


Uncertainty of Linearity Assessment: ±0.9% (k=2)

Certificate No: J23Z60276

Page 7 of 9



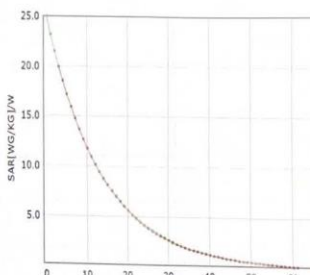
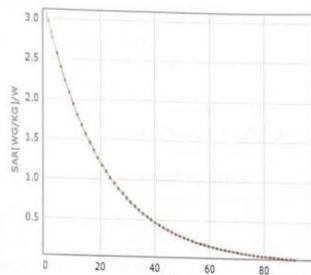


Add: No.52 HuaYuanBei Road, Haidian District, Beijing, 100191, China  
Tel: +86-10-62304633-2117  
E-mail: emf@caict.ac.cn http://www.caict.ac.cn

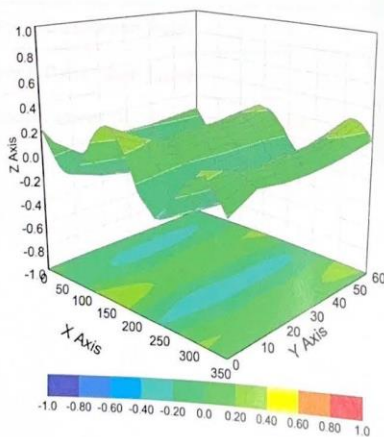
### Conversion Factor Assessment

f=750 MHz,WGLS R9(H\_convF)

f=1750 MHz,WGLS R22(H\_convF)



### Deviation from Isotropy in Liquid



Uncertainty of Spherical Isotropy Assessment:  $\pm 3.2\%$  (k=2)

Certificate No:J23Z60276

Page 8 of 9



Add: No.52 HuaYuanBei Road, Haidian District, Beijing, 100191, China  
Tel: +86-10-62304633-2117  
E-mail: emf@caict.ac.cn <http://www.caict.ac.cn>

**DASY/EASY – Parameters of Probe: EX3DV4 – SN:7380**

**Other Probe Parameters**

Sensor Arrangement	Triangular
Connector Angle (°)	83.7
Mechanical Surface Detection Mode	enabled
Optical Surface Detection Mode	disable
Probe Overall Length	337mm
Probe Body Diameter	10mm
Tip Length	9mm
Tip Diameter	2.5mm
Probe Tip to Sensor X Calibration Point	1mm
Probe Tip to Sensor Y Calibration Point	1mm
Probe Tip to Sensor Z Calibration Point	1mm
Recommended Measurement Distance from Surface	1.4mm





In Collaboration with  
**TTL Speag**  
 CALIBRATION LABORATORY  
 Add: No.52 HuaYuanBei Road, Haidian District, Beijing, 100191, China  
 Tel: +86-10-62304633-2117  
 E-mail: emf@caict.ac.cn <http://www.caict.ac.cn>



中国认可  
 国际互认  
 校准  
**CAICT**  
 CALIBRATION  
 CNAS L0570

Client : CTA

Certificate No: J23Z60391

**CALIBRATION CERTIFICATE**

Object: DAE3 - SN: 428  
 Calibration Procedure(s): FF-Z11-002-01  
 Calibration Procedure for the Data Acquisition Electronics (DAEx)  
 Calibration date: August 30, 2023

This calibration Certificate documents the traceability to national standards, which realize the physical units of measurements(SI). The measurements and the uncertainties with confidence probability are given on the following pages and are part of the certificate.

All calibrations have been conducted in the closed laboratory facility: environment temperature(22±3)°C and humidity<70%.

Calibration Equipment used (M&TE critical for calibration)

Primary Standards	ID #	Cal Date(Calibrated by, Certificate No.)	Scheduled Calibration
Process Calibrator 753	1971018	12-Jun-23 (CTTL, No.J23X05436)	Jun-24

	Name	Function	Signature
Calibrated by:	Yu Zongying	SAR Test Engineer	
Reviewed by:	Lin Hao	SAR Test Engineer	
Approved by:	Qi Dianyuan	SAR Project Leader	

Issued: September 06, 2023

This calibration certificate shall not be reproduced except in full without written approval of the laboratory.



In Collaboration with  
**s p e a g**  
CALIBRATION LABORATORY



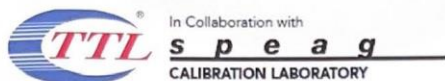
Add: No.52 HuaYuanBei Road, Haidian District, Beijing, 100191, China  
Tel: +86-10-62304633-2117  
E-mail: [cmf@caict.ac.cn](mailto:cmf@caict.ac.cn) <http://www.caict.ac.cn>

**Glossary:**

DAE data acquisition electronics  
Connector angle information used in DASYS system to align probe sensor X to the robot coordinate system.

**Methods Applied and Interpretation of Parameters:**

- *DC Voltage Measurement:* Calibration Factor assessed for use in DASYS system by comparison with a calibrated instrument traceable to national standards. The figure given corresponds to the full scale range of the voltmeter in the respective range.
- *Connector angle:* The angle of the connector is assessed measuring the angle mechanically by a tool inserted. Uncertainty is not required.
- The report provide only calibration results for DAE, it does not contain other performance test results.



Add: No.52 HuaYuanBei Road, Haidian District, Beijing, 100191, China  
Tel: +86-10-62304633-2117  
E-mail: emf@caict.ac.cn <http://www.caict.ac.cn>

**DC Voltage Measurement**

A/D - Converter Resolution nominal  
High Range: 1LSB = 6.1 $\mu$ V, full range = -100...+300 mV  
Low Range: 1LSB = 61nV, full range = -1.....+3mV  
DASY measurement parameters: Auto Zero Time: 3 sec; Measuring time: 3 sec

Calibration Factors	X	Y	Z
High Range	404.468 $\pm$ 0.15% (k=2)	404.804 $\pm$ 0.15% (k=2)	404.579 $\pm$ 0.15% (k=2)
Low Range	3.95934 $\pm$ 0.7% (k=2)	3.95437 $\pm$ 0.7% (k=2)	3.91875 $\pm$ 0.7% (k=2)

**Connector Angle**

Connector Angle to be used in DASY system	258.5 $^{\circ}$ $\pm$ 1 $^{\circ}$
---	-------------------------------------



In Collaboration with  
**TTL** **s p e a g**  
 CALIBRATION LABORATORY  
 Add: No.52 HuaYuanBei Road, Haidian District, Beijing, 100191  
 Tel: +86-10-62304633-2117  
 E-mail: emf@caict.ac.cn http://www.caict.ac.cn



中国认可  
 国际互认  
 校准  
 CALIBRATION  
 CNAS L0570



Client **ATC**

Certificate No: **Z23-60083**

**CALIBRATION CERTIFICATE**

Object **D750V3 - SN: 1194**

Calibration Procedure(s) **FF-Z11-003-01  
 Calibration Procedures for dipole validation kits**

Calibration date: **February 17, 2023**

This calibration Certificate documents the traceability to national standards, which realize the physical units of measurements (SI). The measurements and the uncertainties with confidence probability are given on the following pages and are part of the certificate.

All calibrations have been conducted in the closed laboratory facility: environment temperature (22±3)°C and humidity<70%.

Calibration Equipment used (M&TE critical for calibration)

Primary Standards	ID #	Cal Date (Calibrated by, Certificate No.)	Scheduled Calibration
Power Meter NRP2	106276	10-May-22 (CTTL, No.J22X03103)	May-23
Power sensor NRP6A	101369	10-May-22 (CTTL, No.J22X03103)	May-23
Reference Probe EX3DV4	SN 7464	19-Jan-23 (CTTL-SPEAG,No.Z22-60565)	Jan-24
D4E4	SN 1556	11-Jan-23(CTTL-SPEAG,No.Z23-60034)	Jan-24
Secondary Standards	ID #	Cal Date (Calibrated by, Certificate No.)	Scheduled Calibration
Signal Generator E4438C	MY49070393	17-May-23 (CTTL, No.J22X03157)	May-24
NetworkAnalyzer E5071C	MY46110673	10-Jan-23 (CTTL, No. J23X00104)	Jan-24

	Name	Function	Signature
Calibrated by:	Zhao Jing	SAR Test Engineer	
Reviewed by:	Lin Hao	SAR Test Engineer	
Approved by:	Qi Dianyuan	SAR Project Leader	

Issued: February 24, 2023

This calibration certificate shall not be reproduced except in full without written approval of the laboratory.





Add: No.52 HuaYuanBei Road, Haidian District, Beijing, 100191, China  
Tel: +86-10-62304633-2117  
E-mail: emf@caict.ac.cn <http://www.caict.ac.cn>

**Glossary:**

TSL	tissue simulating liquid
ConvF	sensitivity in TSL / NORM <sub>x,y,z</sub>
N/A	not applicable or not measured

**Calibration is Performed According to the Following Standards:**

- IEC/IEEE 62209-1528, "Measurement Procedure for The Assessment of Specific Absorption Rate of Human Exposure to Radio Frequency Fields from Hand-held and Body-mounted Wireless Communication Devices- Part 1528: Human Models, Instrumentation and Procedures (Frequency range of 4 MHz to 10 GHz)", October 2020
- KDB 865664, "SAR Measurement Requirements for 100 MHz to 6 GHz"

**Additional Documentation:**

- DASY4/5 System Handbook

**Methods Applied and Interpretation of Parameters:**

- Measurement Conditions:** Further details are available from the Validation Report at the end of the certificate. All figures stated in the certificate are valid at the frequency indicated.
- Antenna Parameters with TSL:** The dipole is mounted with the spacer to position its feed point exactly below the center marking of the flat phantom section, with the arms oriented parallel to the body axis.
- Feed Point Impedance and Return Loss:** These parameters are measured with the dipole positioned under the liquid filled phantom. The impedance stated is transformed from the measurement at the SMA connector to the feed point. The Return Loss ensures low reflected power. No uncertainty required.
- Electrical Delay:** One-way delay between the SMA connector and the antenna feed point. No uncertainty required.
- SAR measured:** SAR measured at the stated antenna input power.
- SAR normalized:** SAR as measured, normalized to an input power of 1 W at the antenna connector.
- SAR for nominal TSL parameters:** The measured TSL parameters are used to calculate the nominal SAR result.

The reported uncertainty of measurement is stated as the standard uncertainty of Measurement multiplied by the coverage factor  $k=2$ , which for a normal distribution corresponds to a coverage probability of approximately 95%.



Add: No.52 HuaYuanBei Road, Haidian District, Beijing, 100191, China  
 Tel: +86-10-62304633-2117  
 E-mail: emf@caict.ac.cn http://www.caict.ac.cn

**Measurement Conditions**

DASY system configuration, as far as not given on page 1.

DASY Version	DASY52	V52.10.4
Extrapolation	Advanced Extrapolation	
Phantom	Triple Flat Phantom 5.1C	
Distance Dipole Center - TSL	15 mm	with Spacer
Zoom Scan Resolution	dx, dy, dz = 5 mm	
Frequency	750 MHz ± 1 MHz	

**Head TSL parameters**

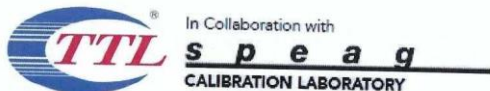
The following parameters and calculations were applied.

	Temperature	Permittivity	Conductivity
Nominal Head TSL parameters	22.0 °C	42.0	0.90 mho/m
Measured Head TSL parameters	(22.0 ± 0.2) °C	41.2 ± 6 %	0.89 mho/m ± 6 %
Head TSL temperature change during test	<1.0 °C	----	----

**SAR result with Head TSL**

SAR averaged over 1 cm <sup>3</sup> (1 g) of Head TSL	Condition	
SAR measured	250 mW input power	2.14 W/kg
SAR for nominal Head TSL parameters	normalized to 1W	8.57 W/kg ± 18.8 % (k=2)
SAR averaged over 10 cm <sup>3</sup> (10 g) of Head TSL	Condition	
SAR measured	250 mW input power	1.40 W/kg
SAR for nominal Head TSL parameters	normalized to 1W	5.61 W/kg ± 18.7 % (k=2)





Add: No.52 HuaYuanBei Road, Haidian District, Beijing, 100191, China  
Tel: +86-10-62304633-2117  
E-mail: emf@caict.ac.cn <http://www.caict.ac.cn>

**Appendix (Additional assessments outside the scope of CNAS L0570)**

**Antenna Parameters with Head TSL**

Impedance, transformed to feed point	50.8Ω- 3.54jΩ
Return Loss	- 28.9dB

**General Antenna Parameters and Design**

Electrical Delay (one direction)	0.979 ns
----------------------------------	----------

After long term use with 100W radiated power, only a slight warming of the dipole near the feed-point can be measured.

The dipole is made of standard semirigid coaxial cable. The center conductor of the feeding line is directly connected to the second arm of the dipole. The antenna is therefore short-circuited for DC-signals. On some of the dipoles, small end caps are added to the dipole arms in order to improve matching when loaded according to the position as explained in the "Measurement Conditions" paragraph. The SAR data are not affected by this change. The overall dipole length is still according to the Standard. No excessive force must be applied to the dipole arms, because they might bend or the soldered connections near the feed-point may be damaged.

**Additional EUT Data**

Manufactured by	SPEAG
-----------------	-------



Add: No.52 HuaYuanBei Road, Haidian District, Beijing, 100191, China  
 Tel: +86-10-62304633-2117  
 E-mail: emf@caict.ac.cn http://www.caict.ac.cn

**DASY5 Validation Report for Head TSL**

Date: 2023-02-17

Test Laboratory: CTTL, Beijing, China

**DUT: Dipole 750 MHz; Type: D750V3; Serial: D750V3 - SN: 1194**

Communication System: UID 0, CW; Frequency: 750 MHz

Medium parameters used:  $f = 750 \text{ MHz}$ ;  $\sigma = 0.885 \text{ S/m}$ ;  $\epsilon_r = 41.2$ ;  $\rho = 1000 \text{ kg/m}^3$

Phantom section: Right Section

Measurement Standard: DASY5 (IEEE/IEC/ANSI C63.19-2007)

**DASY5 Configuration:**

- Probe: EX3DV4 - SN7464; ConvF(10.26, 10.26, 10.26) @ 750 MHz; Calibrated: 2023-01-19
- Sensor-Surface: 1.4mm (Mechanical Surface Detection)
- Electronics: DAE4 Sn1556; Calibrated: 2023-01-11
- Phantom: MFP\_V5.1C (20deg probe tilt); Type: QD 000 P51 Cx; Serial: 1062
- DASY52 52.10.4(1535); SEMCAD X 14.6.14(7501)

**Dipole Calibration/Zoom Scan (7x7x7) (7x7x7)/Cube 0:** Measurement grid:  $dx=5\text{mm}$ ,  $dy=5\text{mm}$ ,  $dz=5\text{mm}$

Reference Value = 50.59 V/m; Power Drift = -0.04 dB

Peak SAR (extrapolated) = 3.42 W/kg

**SAR(1 g) = 2.14 W/kg; SAR(10 g) = 1.4 W/kg**

Smallest distance from peaks to all points 3 dB below = 20 mm

Ratio of SAR at M2 to SAR at M1 = 62.9%

Maximum value of SAR (measured) = 2.93 W/kg

