

## 1. Antenna Description:

Antenna type	PIFA antenna
Model	G232
Frequency range	2400-2500MHz
Manufacturer	Shenzhen Weiwo Intelligent Electronics Co., Ltd
ANT Peak Gain	824-849MHz: 1dBi 1850-1910MH: 1dBi 1710-1755MH:1dBi 2500-2570MH: 1dBi 704-716MH: 1dBi 2570-2620MH: 1dBi 2496 -2690MH: 1dBi

## 2. Antenna Photo:

Length :21.67 mm  
Width:7.75mm



### 3. Test Equipment & Conditions

#### 3.1 Test instrument

VSWR is tested using Agilent E5071B connected to a hand mechanism, and the status is free space.

#### 3.2 Test environment and methods

Dark room specifications: ETS-743

TD-SCDMA test equipment: StarPoint SP6010/Agilent 8960

LTE-TDD/FDD-SCDMA test equipment: StarPoint SP8011/CMW500

WCDMA/GSM/CDMA test equipment: Agilent 8960

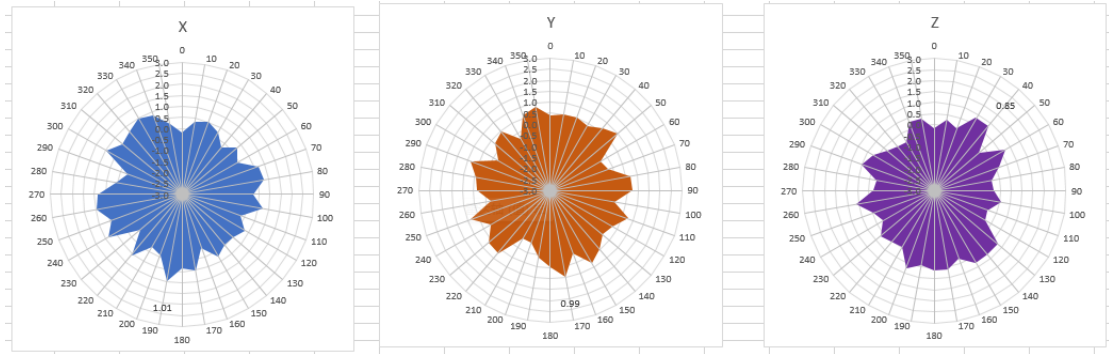
Passive efficiency testing equipment: Agilent Technologies E5071B



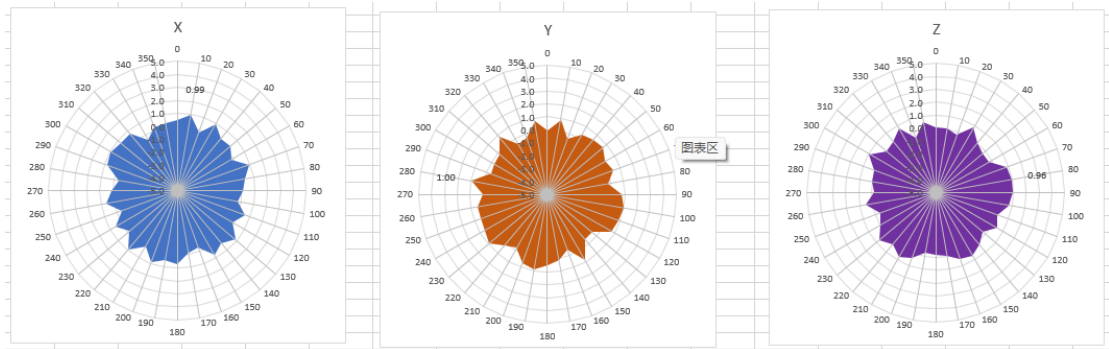
### 4 . Antenna Radiation Pattern



# 2400MHz



# 2450MHz



# 2500MHz

