

# USER GUIDE

## 1 SECURITY STATEMENT

- Read and follow the instructions in the user manual!
- Heed all warnings to avoid risk of injury!
- Use only the parts provided by the manufacturer!
- Do not continue to use the product if you find the charging cable or any parts damaged !
- Any modifications or alterations to the product will affect the safety of the product!
- Caution: Improper use has the risk of low-temperature burns!

**CONTACT US WITH ANY QUESTIONS: [contact@matkao.com](mailto:contact@matkao.com)**

## 2 PACKING DETAILS

- ① A pair of heated socks (2pcs)
- ② 2x batteries (**7.4V 2600mAh**)
- ③ 1x **9V** smart charger with dual charging function
- ④ 1x manual with multi-language
- ⑤ A packing box and one (1) laundry bag

## 3. PRODUCT INTRODUCTION

- **Heated Socks:** Keep warm, safe, durable, sweat absorbing, and easy to wear.
- **Insulated high-efficiency heating element:** Uniform heat dissipation, safe for daily use.
- **Rechargeable high-energy battery pack:** Longer heating time, safer use in cold weather.
- **APP smart temperature control system:** Real-time temperature control and power display.

## **4. WARNING**

### **① Precautions for personal use**

- If you have problems sensing hot or cold objects on your skin (due to diabetes, Raynaud's disease, or similar) please consult your doctor before using these socks.
- Check your feet regularly for reddening of the skin. Excessive heat levels over prolonged periods can lead to burns.

### **② Not for use by children**

Not for use by children. Keep the battery and electrical plugs away from children.

### **③ Socks condition may affect use**

- It is not recommended to wear heated socks while sleeping.
- Do not charge socks if you will not be using them.
- Do not charge socks while wet. Do not expose the socks to rain or water when they are heating or charging.
- Stop using the unit if you discover any damage to connecting cables, batteries, or other parts. You may continue to use the socks without the heating system once the batteries are removed.
- Do not insert any metal or other sharp objects into the socks, batteries, connecting sockets or plugs, as this could cause damage to the unit.
- Do not use these heated socks ( 2.4GHz ) in conjunction with avalanche beacons. Electrically heated socks interfere with the performance of avalanche beacons, impairing your ability to conduct a search or be located.

### **④ Battery use warning**

- Please use only the original batteries and chargers. Using product substitutes may cause accidental damage.
- Do not try to open the battery pack. Do not throw batteries into an open fire. Improper handling of Lithium-Ion batteries may cause them to explode.
- Do not use batteries with damaged protective film.
- Do not use if you notice any deformation or lumps in the battery casing.
- Do not use if the battery overheats during charging.
- Do not use if rust or corrosion is found on the battery connectors.
- Erratic charging and heat may speed up degradation.

## 5. USER MANUAL

### Precautions for First Use

- Fully charge your battery to 100% before first use.
- Supports single or dual battery charging. Dual battery charging time is about 5.5–6.5 hours.
- During charging, the battery's power indicator (green) is always on. When fully charged, the charger indicator turns from red to green. Plug in the charger when the battery is full, the charger indicator is still green.
- Make sure the battery pack is properly connected to the cable inside the pocket and the connector is secure and free from loose connection.
- Fasten the battery cover when putting the battery pack and cable back into the pocket.
- Electric socks have left and right sides, always keep the battery pocket on the outside of the calf.
- The one-touch button control and APP control system of the electric socks are updated simultaneously.
- If the device fails to start normally, please restart the BT.
- Make sure BT is turned on before using the APP.

### Temperature Adjustment Mode without APP

① Power on: Long press for 5 seconds.

② Adjust the temperature: The switch button on the sock is a quick temperature adjustment button, which can be freely switched between three temperature levels. Blue indicates low temperature, white indicates medium temperature, and red indicates high temperature.

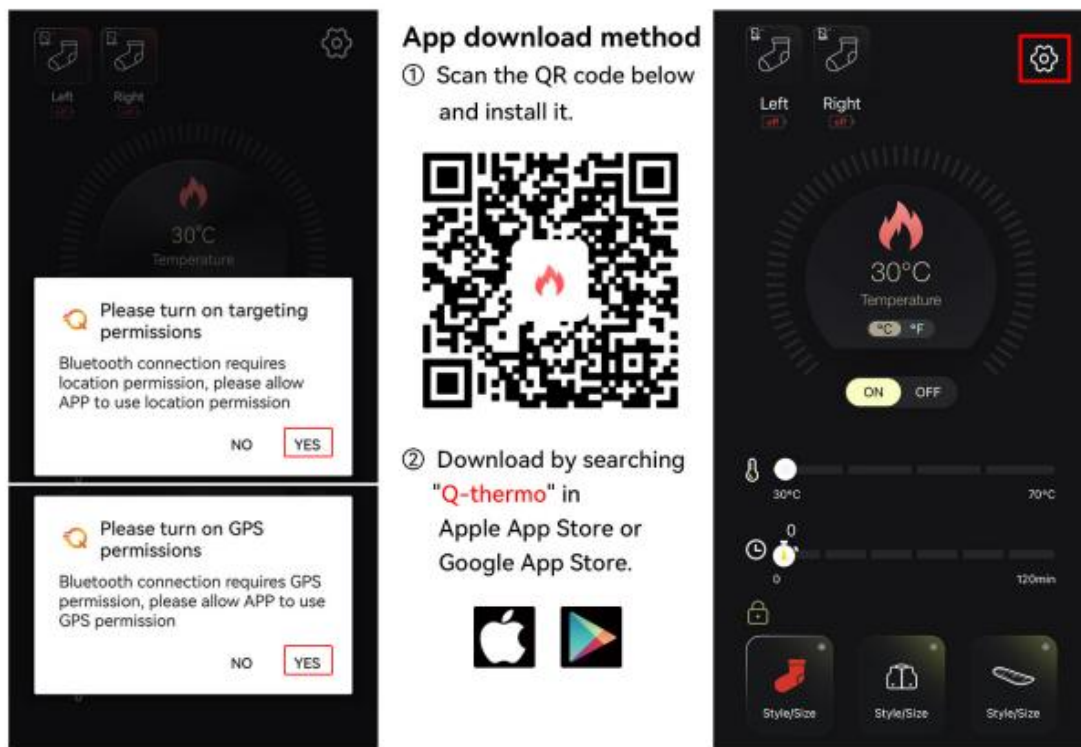


③ Shut down: Long press for 5 seconds to stop heating.

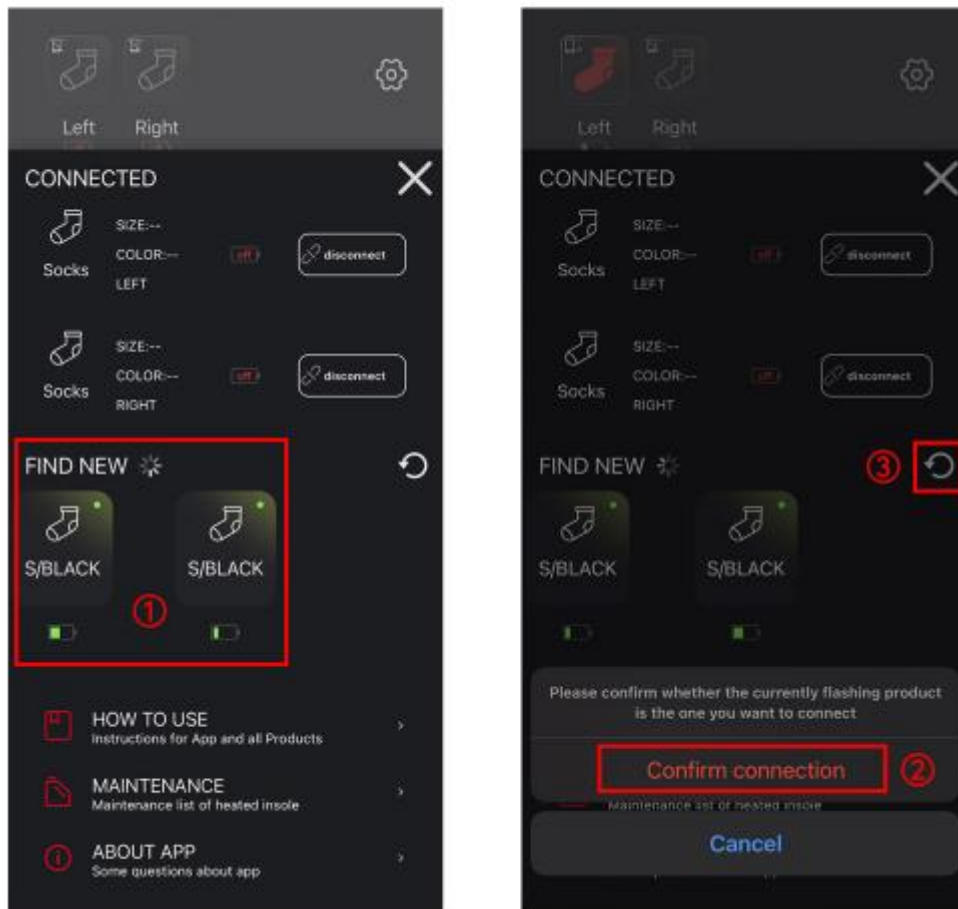
**If you need to adjust the temperature, carefully adjust it through APP.**

## Temperature Adjustment Mode with APPAPP Download Method

1. Scan the QR code to download.
2. Download by searching "Q-thermo" in Apple App Store or Google App Store.

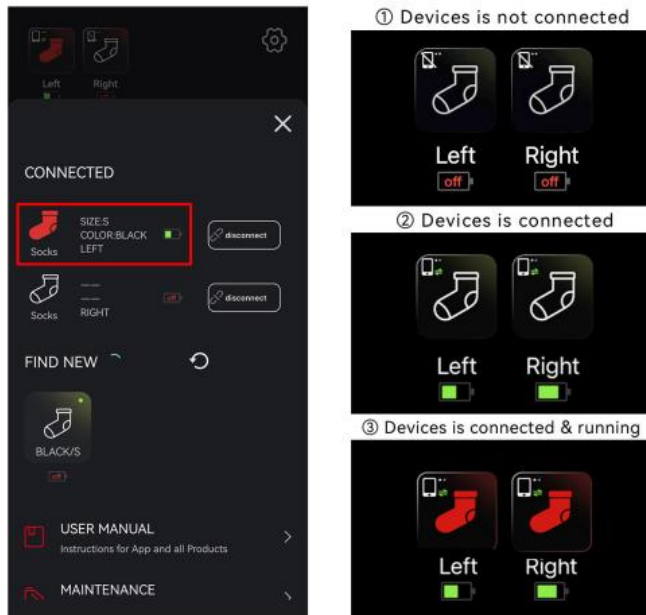


- 1: Allow APP to use BT permission
- 2: Allow APP to use location permission
- 3 : Click the Settings button to enter the BT connection interface



#### 4 : FIND NEW

- ①② Click and confirm to connect socks. The corresponding socks will flash before confirming the connection.
- ③ If the automatic scan does not match the corresponding device, click the refresh button to search for more devices to be matched.



## 5 : CONNECTED

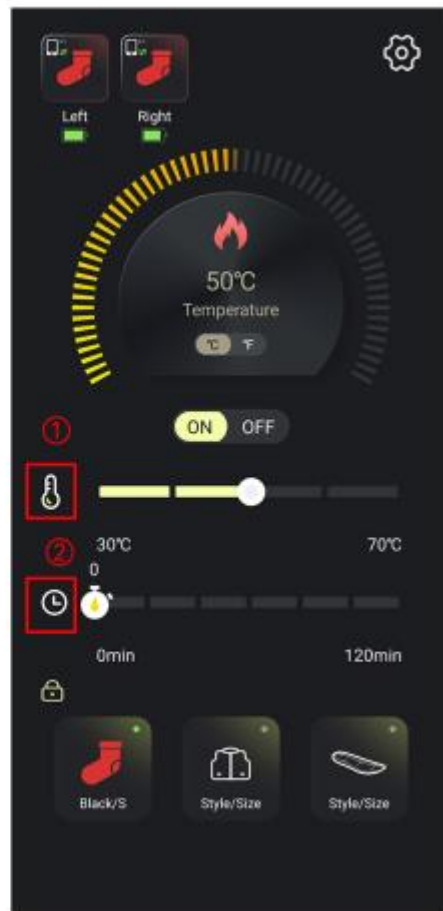
① When the sock icon turns red, the connection is successful. The battery icon shows the remaining power.

② If the BT cannot be connected, please check:

- That the battery is connected to the wire
- That the BT and location is turned on

⑥ APP connection status description





7 : Select the socks you want to control ( Icon turns red to indicate it is controlled)

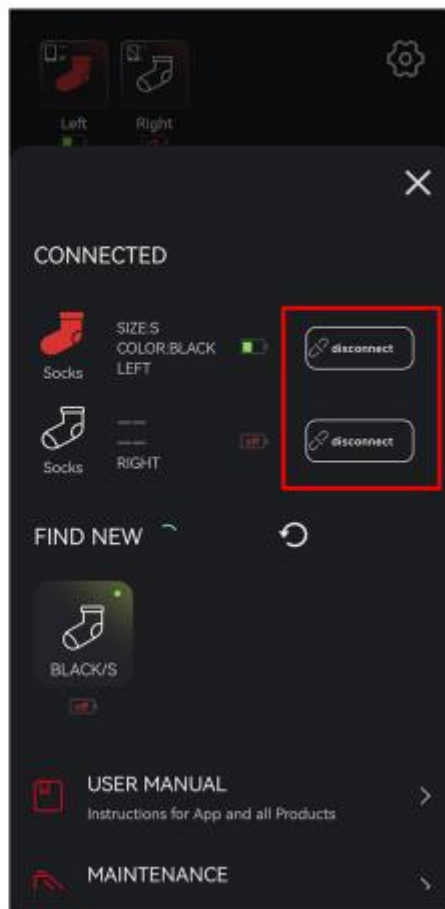
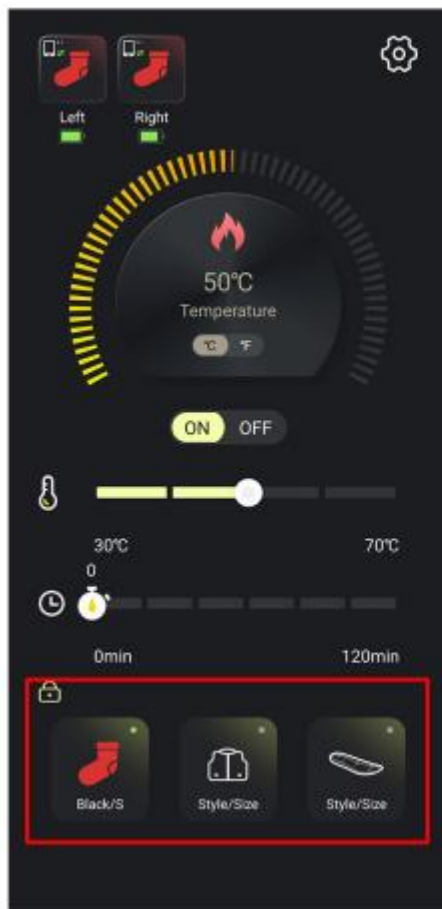
① Click ON/OFF to turn the power on or off.

② Toggle to Celsius or Fahrenheit by toggling the °C/°F button.

⑧ Temperature and Timing

1. Slide the progress bar to adjust the temperature.

2. Timing setting, up to 120min. When the slide bar rewinds to 0, the APP stops running.



9: If you want to control other series products of our brand, click the corresponding icon and repeat the above steps after the icon turns red.

10: Click the “disconnect” button to disconnect BT connection.

After disconnection, you need to reconnect manually next time.

## 6. HEAT GENERATION TEMPERATURE AND DURATION

| Setting | Duration range | Ref.Temperature range       |
|---------|----------------|-----------------------------|
| Low     | 8 ~ 10h        | 86°F ~ 110°F / 30°C ~ 43°C  |
| Medium  | 4.5 ~ 6h       | 110°F ~ 135°F / 43°C ~ 57°C |
| High    | 3.5 ~ 4h       | 135°F ~ 158°F / 57°C ~ 70°C |

The actual temperature range may vary due to the difference in environments. The total duration and temperature in the chart are for reference only as a guide.

## 7. APPLICATION



Skiing



Skating



Ice Hockey



Hiking



Snowmobile



Motorcycling



Hunting

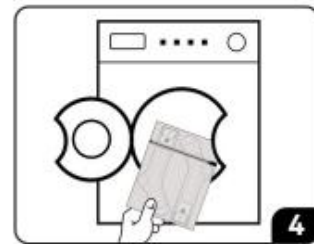
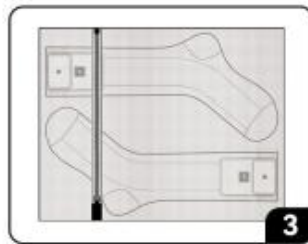
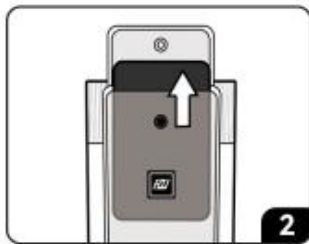


Ice Fishing

## 8. SOCKS WASHING PRECAUTIONS

### Heated Socks Cleaning Procedure :

1. Disconnect the battery from the heated socks before washing.
2. Remove the battery.
3. Put the heated socks into the complimentary laundry bag (included).
4. Put the socks (inside the laundry bag) in the washing machine on the regular or gentle wash cycle.



5. Do not twist or wring the socks; let the socks dry naturally by hanging or lying flat.



**Note:** Be sure to wash the socks in a laundry bag to prevent damage to the heating wire inside the socks due to vigorous action of the washing machine.

## 9. BATTERY

### ① CARE AND STORAGE OF THE BATTERY

- Please use only the charger provided by the manufacturer (9V charger).
- Fully charge the battery before first use.
- **If batteries will not be used for a long time, you must fully charge the batteries before storage! Charge them at least every three months after storage to prolong life!**
- Store in a cool and dry area.
- Temperature extremes during storage will shorten battery life.
- Keep battery connectors/contacts clean.

## ② DISPOSAL

Dispose of discarded socks, batteries, charger, and packaging in an environmentally-conscious manner.

## ③ ADDITIONAL BATTERIES

- You can purchase additional batteries through the MATKAO flagship store or by searching online for MATKAO batteries.

### FCC Statement

This device complies with part 15 of the FCC rules. Operation is subject to the following two conditions: (1) this device may not cause harmful interference, and (2) this device must accept any interference received, including interference that may cause undesired operation.

Changes or modifications not expressly approved by the party responsible for compliance could void the user's authority to operate the equipment.

NOTE: This equipment has been tested and found to comply with the limits for a Class B digital device, pursuant to part 15 of the FCC Rules. These limits are designed to provide reasonable protection against harmful interference in a residential installation. This equipment generates uses and can radiate radio frequency energy and, if not installed and used in accordance with the instructions, may cause harmful interference to radio communications. However, there is no guarantee that interference will not occur in a particular installation. If this equipment does cause harmful interference to radio or television reception, which can be determined by turning the equipment off and on, the user is encouraged to try to correct the interference by one or more of the following measures:

- Reorient or relocate the receiving antenna.
- Increase the separation between the equipment and receiver.
- Connect the equipment into an outlet on a circuit different from that to which the receiver is connected.
- Consult the dealer or an experienced radio/TV technician for help.

The device has been evaluated to meet general RF exposure requirement. The device can be used in portable exposure condition without restriction.

### ISED Statement

- English: This device complies with Industry Canada license-exempt RSS standard(s). Operation is subject to the following two conditions: (1) This device may not cause interference, and (2) This device must accept any interference, including interference that may cause undesired operation of the device. The digital apparatus complies with Canadian CAN ICES-3 (B)/NMB-3(B).

- French: Le présent appareil est conforme aux CNR d'Industrie Canada applicables aux appareils radio exempts de licence. L'exploitation est autorisée aux deux conditions suivantes: (1) l'appareil ne doit pas produire de brouillage, et (2) l'utilisateur de l'appareil doit accepter tout brouillage radioélectrique subi, même si le brouillage est susceptible d'en compromettre le fonctionnement. Cet appareil numérique de la classe B est conforme à la norme NMB-003 du Canada.