

Manual Timer RF Remote control 9822-00

Heating

Cooling

Fresh Air

Clean Air



1



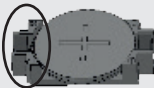
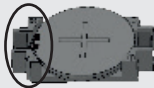
3/16"



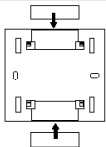
2



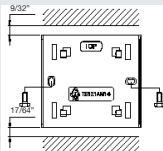
3



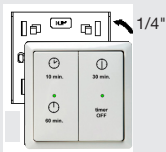
4A

IP 40 =
Zone 3

4B

IP 40 =
Zone 3

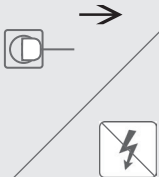
5



6



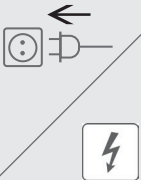
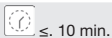
7



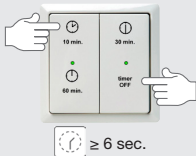
8



9



10A





Green



1 sec.



7



Red

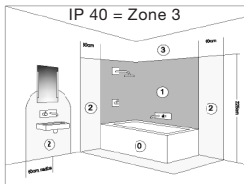


1 sec.

11



Repeat from step 7 per switch / ventilation unit.



Zone 1
min. IP 45

Zone 2
min. IP 44

Zone 3
min. IP 21

Tuning on 1 switch.

Arbitrary address.

10B



10C



Table of contents

1. Introduction	9
2. Installation	10
3. Operation.....	11
4. LED indicators	12
5. Maintenance.....	13
6. Fitting batteries.....	13



An RF signal can be disrupted by various sources, both large metal objects and other RF signals.

All rights reserved

This document has been compiled with the utmost care. The publisher cannot be held liable for any damage caused as a result of missing or incorrect information in this document.

1. Introduction

A ventilation unit with RF function can be operated remotely using a Timer RF. The ventilation-unit manual states whether the Timer RF is suitable for the ventilation unit. The RF system is designed for normal family homes, with dry floors and walls.

The unit's function is to temporarily activate the highest ventilation setting. The Timer RF works on a battery and can be easily stuck or screwed to the wall in a bathroom, kitchen or toilet. A cordless connection must then be made with the RF ventilation unit.

Changes or modifications not expressly approved by Zehnder America could void the user's authority to operate the equipment.

2. Installation

Select a location to fit the Timer RF so that there are no large metal objects in the vicinity of the ventilation unit and the Timer RF. If the RF range is not far enough, an RF Repeater may be used.

Follow the installation instructions at the beginning of the manual.

If the Timer RF needs to connect with an RF PCB of the ComfoAir Q, Comfort Vent Q or AERISnext:
Activate menu ADVANCED SETTINGS. > RF
SETTINGS > START RF PAIRING instead of steps 7
to 9.

3. Operation

But- ton	Printing	Function
1	10 min.	Ventilate for 10 minutes in the highest setting
2	30 min.	Ventilate for 30 minutes in the highest setting
3	60 min.	Ventilate for 60 minutes in the highest setting
4	timer OFF	Stop temporary ventilation in the highest setting. The ventilation unit then returns to the ventilation setting previously selected on the other control units. When the Timer RF is used in combination with the RFZ remote control, the ventilation unit will operate in setting 1 (low).

4. LED indicators

The LED in the button will light up green briefly to confirm that the command has been received by the ventilation unit.

The LED indicators in the buttons also serve as error indicators.

■ Both LED indicators light up red for 1 second.

There is no connection between the Timer RF and the ventilation unit. If the problem persists, then the battery requires replacement.

■ The LED indicators light up red alternately.

Failed to establish a cordless connection with the ventilation unit. The ventilation unit is not in programming setting, or the distance between the ventilation unit and the Timer RF is too large. Repeat tuning to create a new connection. If the error occurs itself repeatedly, you need to select a different location for the Timer RF or fit an RF Repeater.

5. Maintenance

Regularly remove dust from the Timer RF with a dry duster or a vacuum cleaner.



Do not allow the Timer RF to get wet when cleaning.

6. Inserting the battery

The Timer RF runs on a type CR 2032 lithium battery. A new battery has a lifespan of about five years with a maximum of ten switch movements daily. Of course, the more often it is used, the shorter the lifespan. The battery must be fitted at the back of the switch. Follow installation steps 1, 2 and 3 for replacing the battery.



The Timer RF will not work if the battery is fitted the wrong way round. Moreover, an incorrectly fitted battery can damage the electronics. (+ must remain visible)



925 MHz operational frequency



FOR USE IN ITU REGION 2 ONLY (Americas)

This device complies with Part 15 of FCC Rules. Operation is subject to the following two conditions: (1) this device may not cause harmful interference, and (2) this device must accept any interference received, including interference that may cause undesired operation.

Note: This equipment has been tested and found to comply with the limits for a Class B digital device, pursuant to part 15 of the FCC Rules. These limits are designed to provide reasonable protection against harmful interference in a residential installation. This equipment generates, uses and can radiate radio frequency energy and, if not installed and used in accordance with the instructions, may cause harmful interference to radio communications. However, there is no guarantee that interference will not occur in a particular installation. If this equipment does cause harmful interference to radio or television reception, which can be determined by turning the equipment off and on, the user is encouraged to try to correct the interference by one or more of the following measures:

- Reorient or relocate the receiving antenna.
- Increase the separation between the equipment and receiver.
- Connect the equipment into an outlet on a circuit different from that to which the receiver is connected.
- Consult the dealer or an experienced radio/TV technician for help.

Changes or modifications not expressly approved by Zehnder could void the user's authority to operate the equipment.

Supplier's Declaration of Conformity
47 CFR § 2.1077 Compliance Information

Manual Timer RF
Zehnder America
6 Merrill Industrial Drive, Suite 7
Hampton, NH 03842 USA
603 601 8544 www.zehnderamerica.com

This device complies with Part 15 of the FCC Rules. Operation is subject to the following two conditions: (1) This device may not cause harmful interference, and (2) this device must accept any interference received, including interference that may cause undesired operation.

Zehnder America
6 Merrill Industrial Drive Hampton NH 03842
T 603 601 8544 www.zehnderamerica.com