

# 产品规格书

## specification

客 户

**CUSTOMER:**

格莱富

型 号

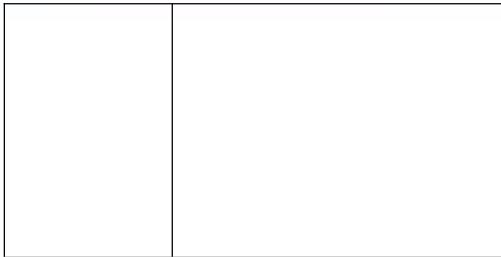
**MODEL NO:**

P8

规 格

**SENSITIVITY:**

FPC



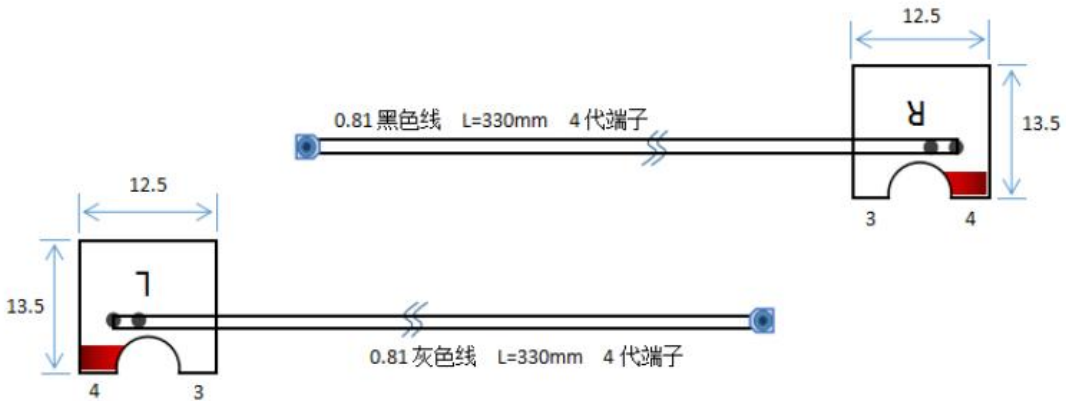
Shenzhen Junyu communication equipment Co., LTD

Address: 8F A82, Zhenxing Building, No.65 Jinli Road, Buji  
Street, Longgang District, Shenzhen

RoHS Compliant

REV	DESCRIPTION	DATE	APPROVED
AD			

unit: mm



要求:

1. 线材外被无被皮. 损伤
2. 成品须100%测试导通OK
3. 成品须100%全检OK.
4. 采用环保制程. 符合ROHS要求.
5. 端子拉力: 1.5KG~.
6. 未注公差请以一般公差为准.

测试条件:

- 高压: 200V DC
- 导通: 0.5 OHM MAX
- 高压时间: 1mS
- 绝缘电阻: 10M OHM MIN

长度单位: mm

<p>一般公差 (GENERAL TOLERANCES)</p> <p>尺寸 (Dimension) 公差 (Tolerance)</p> <p>0-1 ±0.1 mm</p> <p>1-10 ±0.3 mm</p> <p>10-30 ±0.6 mm</p> <p>30-100 ±1 mm</p> <p>100-300 ±2 mm</p> <p>( UNLESS OTHERWISE SPECIFIED )</p>	<p>版本 (REV)</p> <p>AD</p>	<p>图样名称 (Draw Name)</p> <p>组立图</p>	<p>客户编号 (CUS No.)</p>
	<p>比例 (Scale)</p>	<p>产品名称 (Product Name)</p> <p>OPEN-FPC-0.81黑-L185MM</p>	<p>产品序号 (Product No.)</p>
<p>图例 (Draw Name)</p> <p>陈道群</p>	<p>单位 (UNIT)</p> <p>mm</p>	<p>规格 (Size)</p> <p>A4</p>	<p>页/次 (Sheet)</p> <p>1/1</p>
<p>审核 (Checked)</p>	<p>日期日期 (Original Date)</p> <p>2023.5.2</p>		
<p>核准 (APPROVED)</p>			

No.	Name	Description	Q'ty	Part No.
2	FPC板	L34.5*7*0.26黑色FPC板	1	1601-0034
1	线材	0.81黑-48-锡-FEP	1	1301-0004



### 三 • 主天线无源效率



## WIFI-1

Freq (MHz)	Effi (%)	Effi (dB)	Gain (dBi)
2400	21.93	-6.59	-1.54
2410	22.99	-6.39	-1.36
2420	23.81	-6.23	-1.29
2430	23.77	-6.24	-1.4
2440	23.9	-6.22	-1.42
2450	23.04	-6.37	-1.68
2460	22.22	-6.53	-1.74
2470	21.98	-6.58	-1.81
2480	21.56	-6.66	-1.76
2490	21.01	-6.78	-1.87
2500	19.86	-7.02	-2.04

Freq (MHz)	Effi (%)	Effi (dB)	Gain (dBi)	Gain (dEd)
5150	8.29	-10.82	-6.45	-8.6
5160	8.07	-10.93	-6.55	-8.7
5170	8.44	-10.74	-6.79	-8.94
5180	8.49	-10.71	-6.26	-8.41
5190	8.34	-10.79	-6.24	-8.39
5200	7.96	-10.99	-6.37	-8.52
5210	8.41	-10.75	-6.04	-8.19
5220	8.44	-10.74	-5.95	-8.1
5230	9.13	-10.39	-5.45	-7.6
5240	9.12	-10.4	-5.48	-7.63
5250	8.82	-10.55	-5.36	-7.51
5260	8.97	-10.47	-5.29	-7.44
5270	9.04	-10.44	-5.13	-7.28
5280	9.22	-10.35	-5.03	-7.18
5290	9.92	-10.04	-4.36	-6.51
5300	9.29	-10.32	-4.64	-6.79
5310	9.26	-10.33	-4.74	-6.89
5320	9.69	-10.14	-4.53	-6.68
5330	9.97	-10.01	-4.48	-6.63
5340	11.07	-9.56	-3.69	-5.84
5350	11.72	-9.31	-3.47	-5.62
5360	11.09	-9.55	-3.76	-5.91
5370	10.93	-9.62	-3.97	-6.12
5380	11.44	-9.42	-3.73	-5.88
5390	11.03	-9.57	-3.97	-6.12
5400	13.49	-8.7	-3	-5.15
5410	13.49	-8.7	-3.25	-5.4
5420	13.19	-8.8	-3.27	-5.42
5430	13.23	-8.78	-3.29	-5.44
5440	13.47	-8.71	-3.4	-5.55
5450	13.85	-8.58	-3.16	-5.31
5460	14.18	-8.48	-3.2	-5.35
5470	13.61	-8.66	-3.26	-5.41
5480	13.26	-8.78	-3.58	-5.73
5490	13.24	-8.78	-3.46	-5.61
5500	14.01	-8.54	-3.19	-5.34
5510	14.52	-8.38	-3.27	-5.42
5520	14.66	-8.34	-3.11	-5.26
5530	14.98	-8.25	-2.94	-5.09
5540	15.08	-8.21	-2.93	-5.08
5550	15.19	-8.18	-2.76	-4.91

5500	14.01	-8.54	-3.19
5510	14.52	-8.38	-3.27
5520	14.66	-8.34	-3.11
5530	14.98	-8.25	-2.94
5540	15.08	-8.21	-2.93
5550	15.19	-8.18	-2.76
5560	15.73	-8.03	-2.48
5570	16.38	-7.86	-2.19
5580	16.41	-7.85	-2.2
5590	16.46	-7.83	-2.08
5600	16.85	-7.73	-1.77
5610	17.02	-7.69	-1.73
5620	17.63	-7.54	-1.46
5630	17.74	-7.51	-1.45
5640	18.24	-7.39	-1.29
5650	18.62	-7.3	-0.95
5660	19.51	-7.1	-0.76
5670	19.8	-7.03	-0.61
5680	20.22	-6.94	-0.41
5690	20.19	-6.95	-0.45
5700	20.24	-6.94	-0.42
5710	19.82	-7.03	-0.61
5720	20.16	-6.95	-0.38
5730	20.69	-6.84	-0.31
5740	21.07	-6.76	-0.13
5750	21.44	-6.69	-0.26
5760	21.38	-6.7	0.02
5770	21.68	-6.64	-0.07
5780	21.62	-6.65	-0.03
5790	21.24	-6.73	-0.27
5800	20.86	-6.81	-0.26
5810	21.93	-6.59	0.01
5820	22.68	-6.44	0.05
5830	23.49	-6.29	0.24
5840	24.75	-6.06	0.39
5850	25.58	-5.92	0.56



### 三 • 主天线无源效率



## WIFI-2

Freq (MHz)	Effi (%)	Effi (dB)	Gain (dBi)
2400	17.09	-7.67	-3.34
2410	18.36	-7.36	-3.08
2420	21.23	-6.73	-2.41
2430	22.72	-6.44	-2.01
2440	24.25	-6.15	-1.58
2450	25.89	-5.87	-1.27
2460	25.69	-5.9	-1.36
2470	25.97	-5.85	-1.28
2480	26.57	-5.76	-1.33
2490	27.48	-5.61	-1.18
2500	27.79	-5.56	-1.18

Freq (MHz)	Effi (%)	Effi (dB)	Gain (dBi)
5150	11.21	-9.51	-5.95
5160	11.2	-9.51	-5.64
5170	10.47	-9.8	-5.61
5180	10.05	-9.98	-5.83
5190	9.62	-10.17	-6.07
5200	9.59	-10.18	-5.75
5210	10.27	-9.89	-5.63
5220	10.55	-9.77	-5.42
5230	10.81	-9.66	-5.17
5240	10.36	-9.85	-5.4
5250	9.93	-10.03	-5.4
5260	10.62	-9.74	-5.14
5270	10.72	-9.7	-4.88
5280	10.53	-9.77	-4.82
5290	11.16	-9.53	-4.7
5300	10.64	-9.73	-4.65
5310	10.64	-9.73	-4.55
5320	11.77	-9.29	-4.28
5330	11.99	-9.21	-4.03
5340	12.65	-8.98	-3.93
5350	13.33	-8.75	-3.68
5360	12.74	-8.95	-4.31
5370	13.13	-8.82	-4.16
5380	13.63	-8.66	-3.96
5390	12.6	-9	-4.38
5400	14.78	-8.3	-3.83
5410	15.09	-8.21	-4.01
5420	15.19	-8.19	-4.18
5430	15.24	-8.17	-4.2
5440	14.78	-8.3	-4.25
5450	14.08	-8.51	-4.36
5460	14.51	-8.38	-4.08
5470	13.95	-8.56	-3.96
5480	14.12	-8.5	-4.1
5490	14.26	-8.46	-4
5500	14.31	-8.44	-4.12
5510	14.3	-8.45	-4.33
5520	14.25	-8.46	-4.24
5530	14.3	-8.45	-4.25
5540	14.38	-8.42	-4.27
5550	14.21	-8.48	-4.4

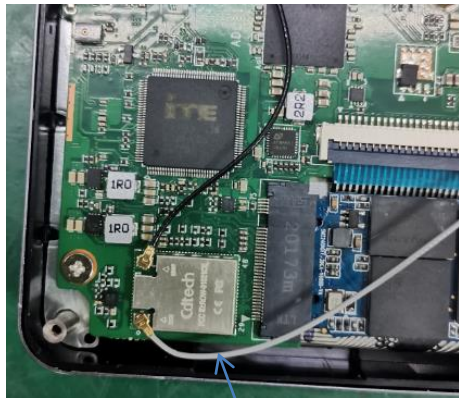
5550	14.21	-8.48	-4.4
5560	14.34	-8.43	-4.24
5570	14.68	-8.33	-4.36
5580	14.71	-8.32	-4.26
5590	14.93	-8.26	-4.35
5600	15.65	-8.05	-3.77
5610	15.25	-8.17	-4
5620	15.27	-8.16	-3.97
5630	15.31	-8.15	-3.84
5640	15.1	-8.21	-3.8
5650	15.07	-8.22	-3.73
5660	15.26	-8.17	-3.45
5670	14.88	-8.27	-3.76
5680	14.83	-8.29	-3.43
5690	14.46	-8.4	-3.22
5700	14.28	-8.45	-3
5710	13.79	-8.6	-3.18
5720	13.76	-8.61	-3.1
5730	13.13	-8.82	-2.86
5740	13.45	-8.71	-2.79
5750	13.76	-8.61	-2.69
5760	14.07	-8.52	-2.42
5770	14.02	-8.53	-2.3
5780	13.7	-8.63	-2.33
5790	13.65	-8.65	-2.37
5800	13.82	-8.59	-2.44
5810	14.67	-8.34	-2.24
5820	15.35	-8.14	-2.19
5830	15.69	-8.04	-2.04
5840	16.26	-7.89	-1.64
5850	16.74	-7.76	-1.66



#### 四·环境处理方式



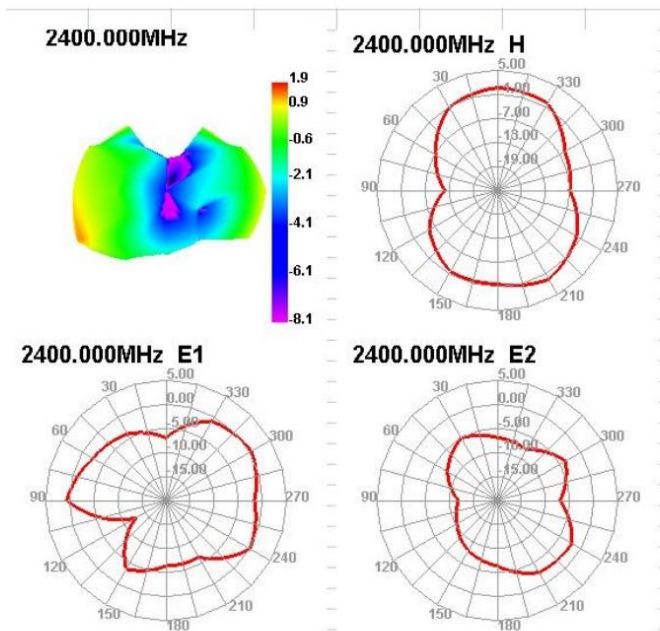
同轴线如上图所示摆放



同轴线如上图所示扣线



## 五 • 2D 3D测试数据图

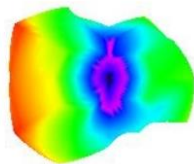




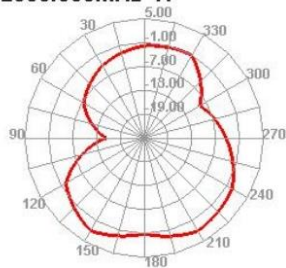
## 五 • 2D 3D测试数据图



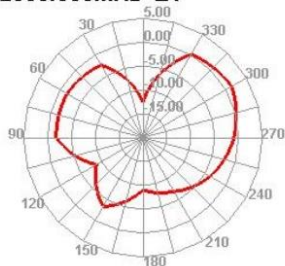
2500.000MHz



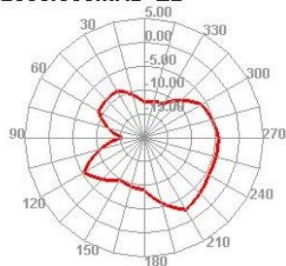
2500.000MHz H



2500.000MHz E1



2500.000MHz E2

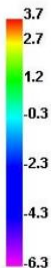
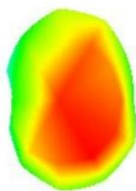




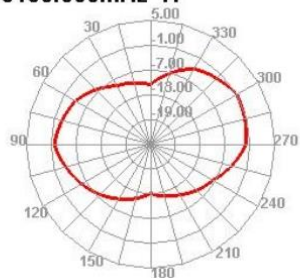
## 五 • 2D 3D测试数据图



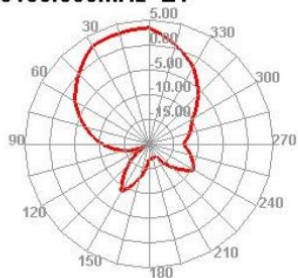
5150.000MHz



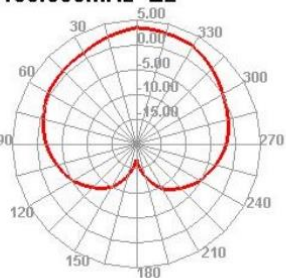
5150.000MHz H



5150.000MHz E1



5150.000MHz E2



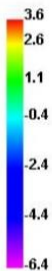
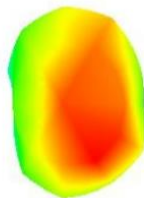




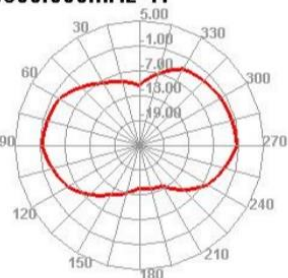
## 五 • 2D 3D测试数据图



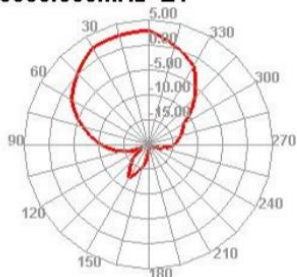
5300.000MHz



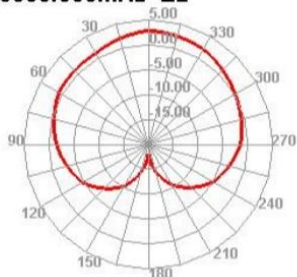
5300.000MHz H



5300.000MHz E1



5300.000MHz E2

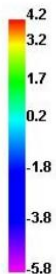
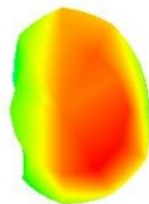




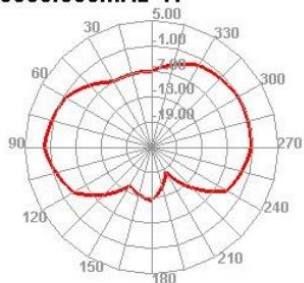
## 五 • 2D 3D测试数据图



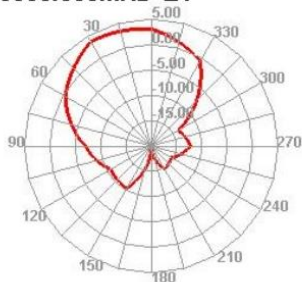
5550.000MHz



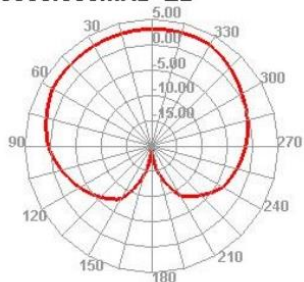
5550.000MHz H



5550.000MHz E1



5550.000MHz E2

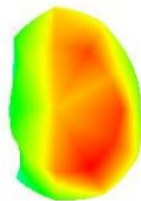




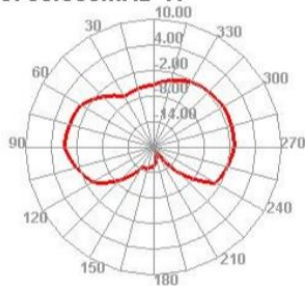
## 五 • 2D 3D测试数据图



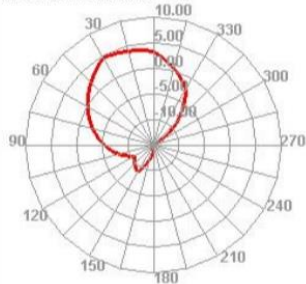
5750.000MHz



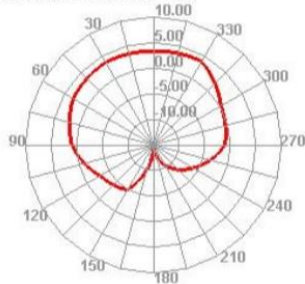
5750.000MHz H



5750.000MHz E1



5750.000MHz E2

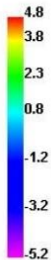
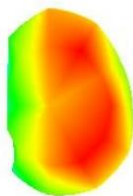




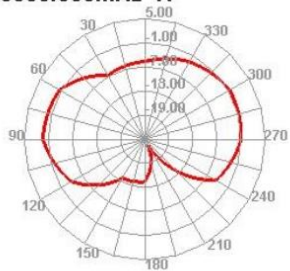
## 五 • 2D 3D测试数据图



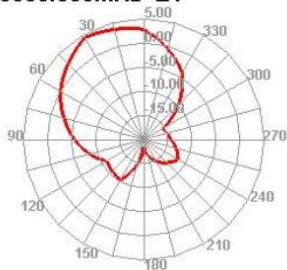
5850.000MHz



5850.000MHz H



5850.000MHz E1



5850.000MHz E2

