

# KOOSMILE

## Quick Start Guide



# Introduction


Thank you for your choosing the new Laptop.

This guide serves to enable users to get to know and familiar with our product as soon as possible. Here we have made a brief introduction to the key layout and definitions in figures and words.

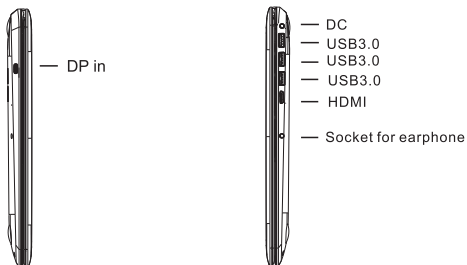
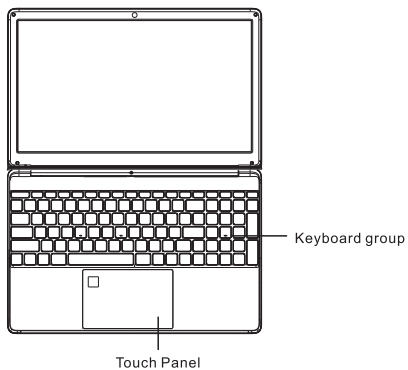
# Contents

<b>I . Precautions before Use.....</b>	<b>03</b>
<b>II . Key Layout and Definitions.....</b>	<b>04</b>
<b>III . Introduction to Desktop.....</b>	<b>05</b>
1.Windows 11 Start Screen.....	05
2.Apps introduction.....	08
3.Start menu.....	09
4. Screen projection function .....	11
<b>IV. Basic Operations.....</b>	<b>12</b>
1. Sleep, Restart, and Shutdown.....	12

## I Precautions before Use

1. This production is suitable for use in non-tropic areas below 2,000 meters, and the mark  in the nameplate indicates the product is suitable for use in non-tropic areas.
2. Prevent the Laptop from falling to the ground or being strongly impacted otherwise.
3. Do not use it in the long term in any environment where the air is too cold, too hot ( $<35^{\circ}\text{C}$ ), too humid or with too much dust. Do not expose the Laptop to sunlight.
4. Avoid using it in the strong magnetic and strong static environment as much as possible.
5. Once any water or other liquid splashes onto the Laptop, close it immediately and do not use it until it dries out
6. Do not clean the Laptop with any detergent containing chemical element or other liquid to avoid causing damage due to corrosion and becoming damp. If cleaning is really necessary, clean it with dry soft cloth tissue paper.
7. Our company shall not bear any and all responsibilities for loss or deletion of material inside the machine caused due to abnormal software and hardware operation, maintenance or any other accident.
8. Please back up your important material at any time to avoid loss.
9. Please do not disassemble the Laptop by yourself; otherwise you will lose the right to warranty.
10. Replacement with incorrect type batteries may cause explosion. Make sure to use original batteries.

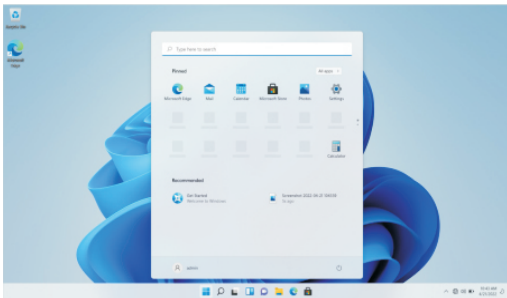
## II. Key Layout and Definitions



## VI Introduction to Desktop

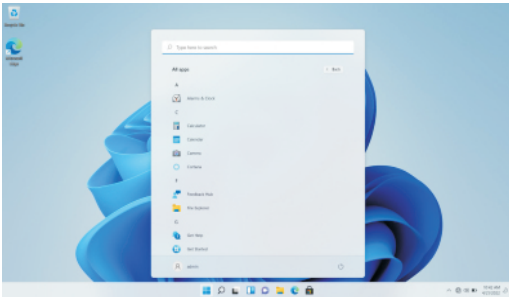
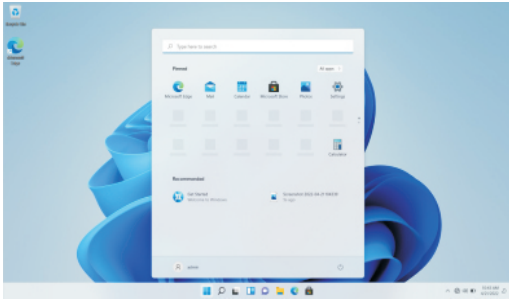
1. Windows 11 start image: On the start screen, you can see many programs fixed in the image. These application programs are displayed in the form of "magnet". As long as you click them, you can easily visit them.

You need to log on your Microsoft account before the application program completely runs.

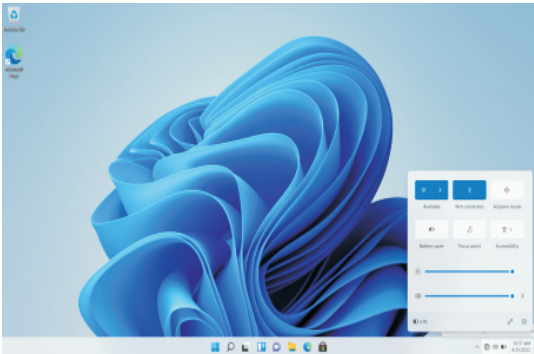


2. Introduction to app Interface

Besides the application programs already fixed on the start screen, you can also start other application programs in all application programs, such as other software application programs attached to the Laptop



Click the network and sound in the lower right corner to connect to the network and adjust the sound. Screen brightness and other



Conversely, if you want to cancel or delete a certain application in the start screen or taskbar, (1) Right-Clicking the application, (2)Click the “Unpin from Start” or “Unpin this program from taskbar”





### 3. Start Menu

Under Laptop ,press Start ion, Start Menu will display, including: Start, Device, Setup, Share, and Search Program.



Usually: File Explorer,Settings,Power, and All apps



Can Sleep/Shut down/Restart the Laptop



Can let you search the files and application programs in the Laptop



Can let you set up the Laptop



Can scan more apps

## Search menu



## Action Center



## SetupMenu



Action Center is a notification center also allows for quick settings like Laptop , Wi-Fi, Bluetooth etc.

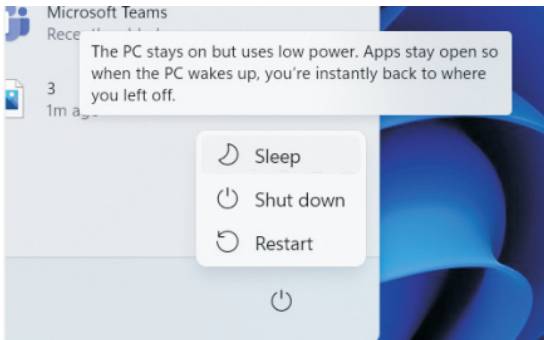
#### 4. Screen projection function

You can use an external device to use a projection cable to synchronize the image of the external device to this computer. Note: The external device (mobile phone) needs to support the wired screen projection function



### IV Basic Operations

1. Sleep, Shut down and Restart



## FCC Statement

This equipment has been tested and found to comply with the limits for a Class B digital device, pursuant to part 15 of the FCC Rules. These limits are designed to provide reasonable protection against harmful interference in a residential installation. This equipment generates, uses and can radiate radio frequency energy and, if not installed and used in accordance with the instructions, may cause harmful interference to radio communications. However, there is no guarantee that interference will not occur in a particular installation. If this equipment does cause harmful interference to radio or television reception, which can be determined by turning the equipment off and on, the user is encouraged to try to correct the interference by one or more of the following measures:

- Reorient or relocate the receiving antenna.
- Increase the separation between the equipment and receiver.
- Connect the equipment into an outlet on a circuit different from that to which the receiver is connected.
- Consult the dealer or an experienced radio/TV technician for help.

Caution: Any changes or modifications to this device not explicitly approved by manufacturer could void your authority to operate this equipment.

This device complies with part 15 of the FCC Rules. Operation is subject to the following two conditions: (1) This device may not cause harmful interference, and (2) this device must accept any interference received, including interference that may cause undesired operation.

Specific Absorption Rate (SAR) information:

This NoteBook meets the government's requirements for exposure to radio waves. The guidelines are based on standards that were developed by independent scientific organizations through periodic and thorough evaluation of scientific studies.

The standards include a substantial safety margin designed to assure the safety of all persons regardless of age or health. FCC RF Exposure Information and Statement the SAR limit of USA (FCC) is 1.6 W/kg averaged over one gram of tissue. Device types: NoteBook has also been tested against this SAR limit. This device was tested for typical body-worn operations with the back of the NoteBook kept 0mm from the body. To maintain compliance with FCC RF exposure requirements, use accessories that maintain an 0mm separation distance between the user's body and the back of the NoteBook. The use of belt clips, holsters and similar accessories should not contain metallic components in its assembly. The use of accessories that do not satisfy these requirements may not comply with FCC RF exposure requirements, and should be avoided.

## Shenzhen Anxin Taihe Technology Co., Ltd.

Tel:+86 0755-28019317

Email:pm01@sz-botu.com

**Address:** 2nd Floor, Building 28, Longjun Industrial Zone, Heping West Road, Longhua District, Shenzhen