

Antenna Test Report

Project Name : S400

Part No.:

Write By: damoncui

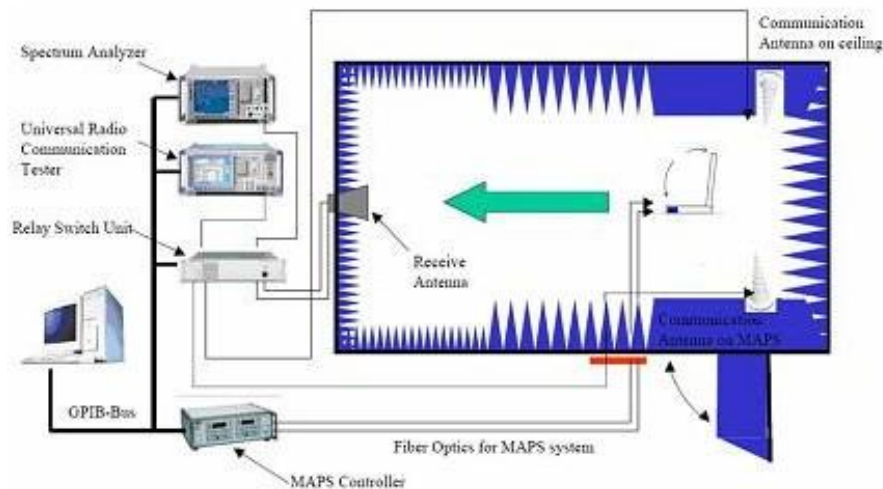
Date: 2023-10-11

Ver: 1.0

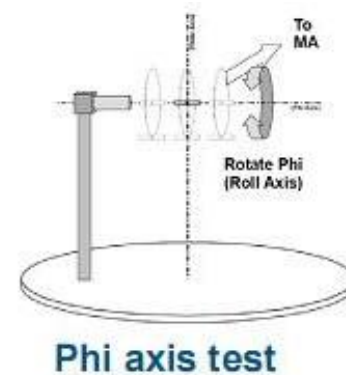
Test conditions

Test Equipment:

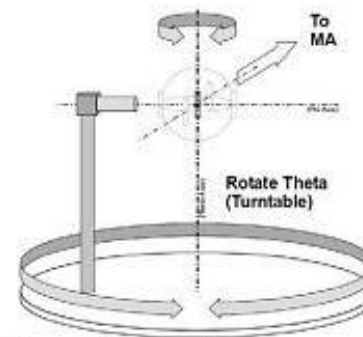
Agilent 5071B, Agilent E5515C



(Testing by 3D anechoic chamber)



Phi axis test



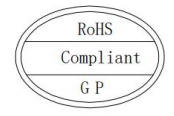
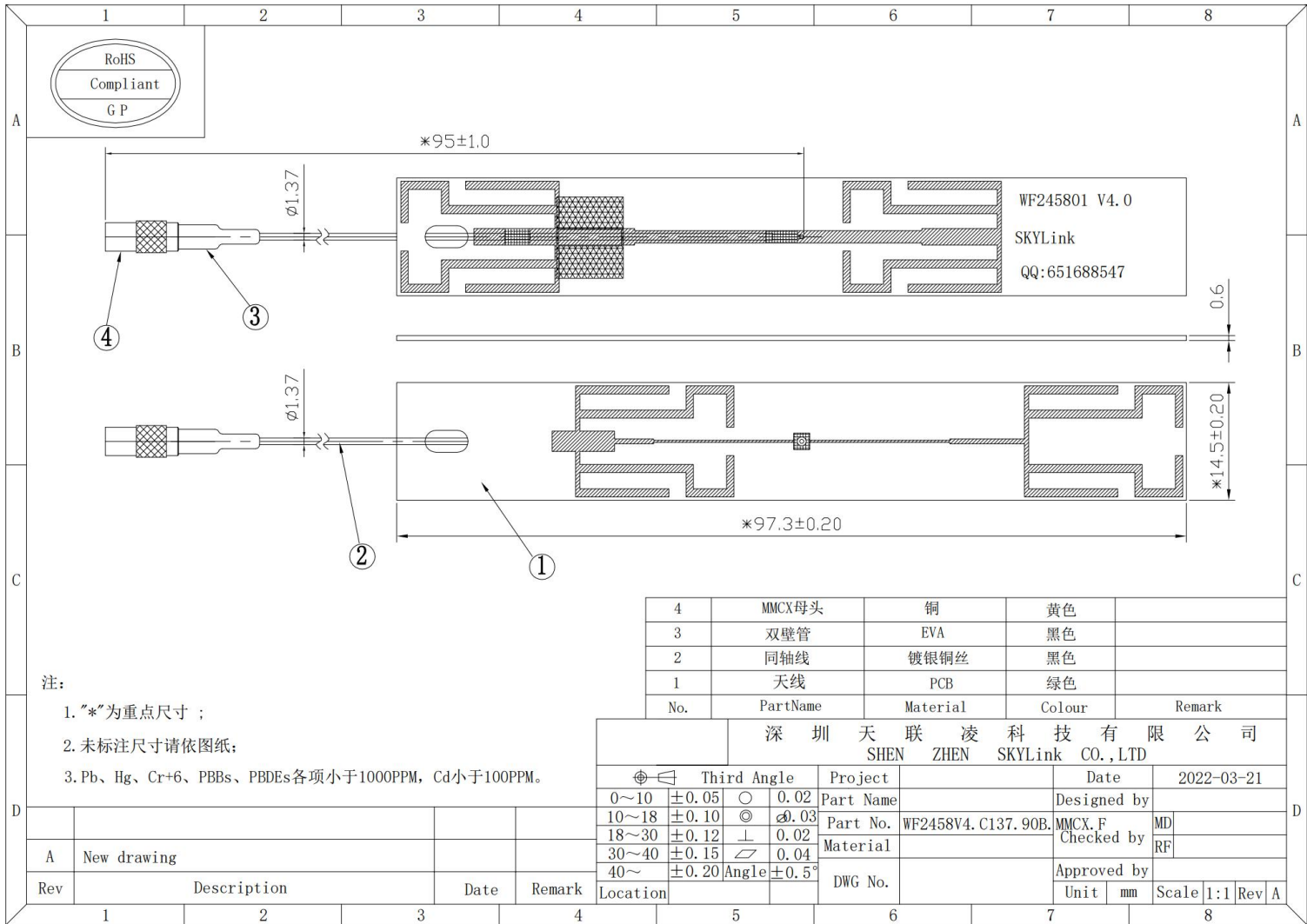
Theta axis test

Specification Summary

| Electronical Data | |
|-------------------|------------------------------|
| Frequency Range | 2400~2500 MHz / 5150-5850MHZ |
| VSWR | <3 |
| Efficiency | >50% |
| Impedance | 50 Ohm |
| Polarization | Line |
| Antenna Type | Monopole |

Antenna Drawing

由 Autodesk 教育版产品制作



WF245801 V4.0
SKYLink
QQ:651688547

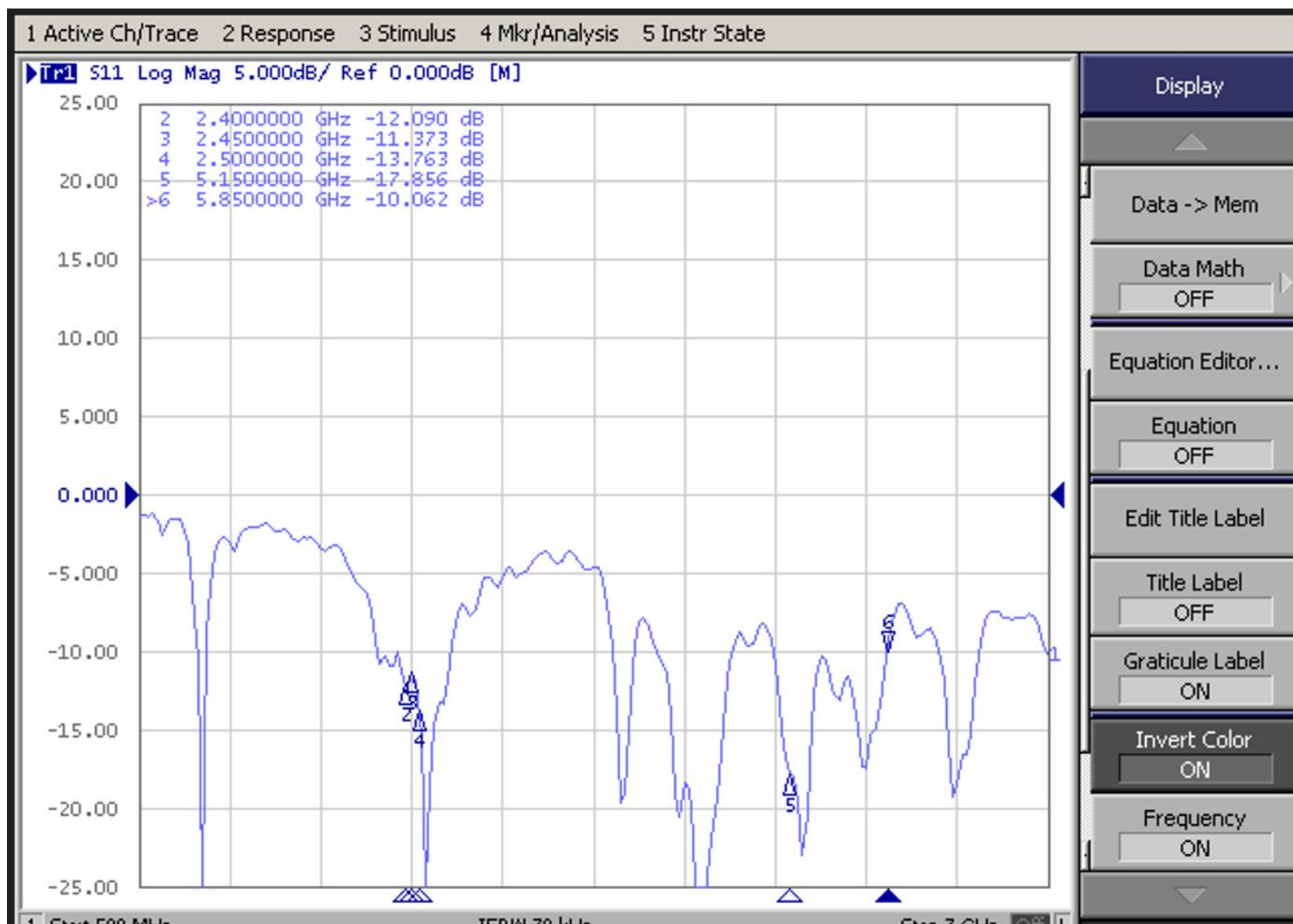
- 注:
1. "*"为重点尺寸；
 2. 未标注尺寸请依图纸；
 3. Pb、Hg、Cr+6、PBBs、PBDEs各项小于1000PPM，Cd小于100PPM。

| | | | | |
|-----|----------|----------|--------|--------|
| 4 | MMCX母头 | 铜 | 黄色 | |
| 3 | 双壁管 | EVA | 黑色 | |
| 2 | 同轴线 | 镀银铜丝 | 黑色 | |
| 1 | 天线 | PCB | 绿色 | |
| No. | PartName | Material | Colour | Remark |

| | | | | |
|---------------------------|--|--------------------|--------|-----------------|
| 深圳天联凌科技有限公司 | | | | |
| SHEN ZHEN SKYLink CO.,LTD | | | | |
| Project | | Date | | 2022-03-21 |
| Part Name | | Designed by | | |
| Part No. | | WF2458V4.C137.90B. | MMCX.F | MD |
| Material | | Checked by | | RF |
| DWG No. | | Approved by | | |
| Location | | Unit | mm | Scale 1:1 Rev A |

| | | | |
|-----|-------------|------|--------|
| A | New drawing | | |
| Rev | Description | Date | Remark |
| 1 | | | |

S11

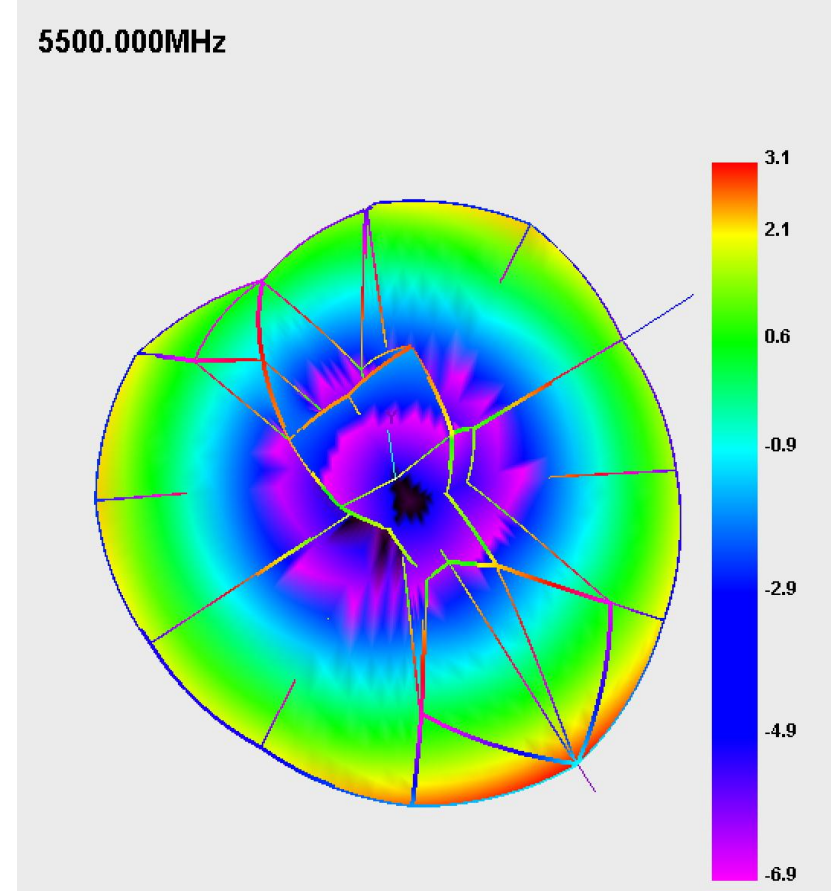
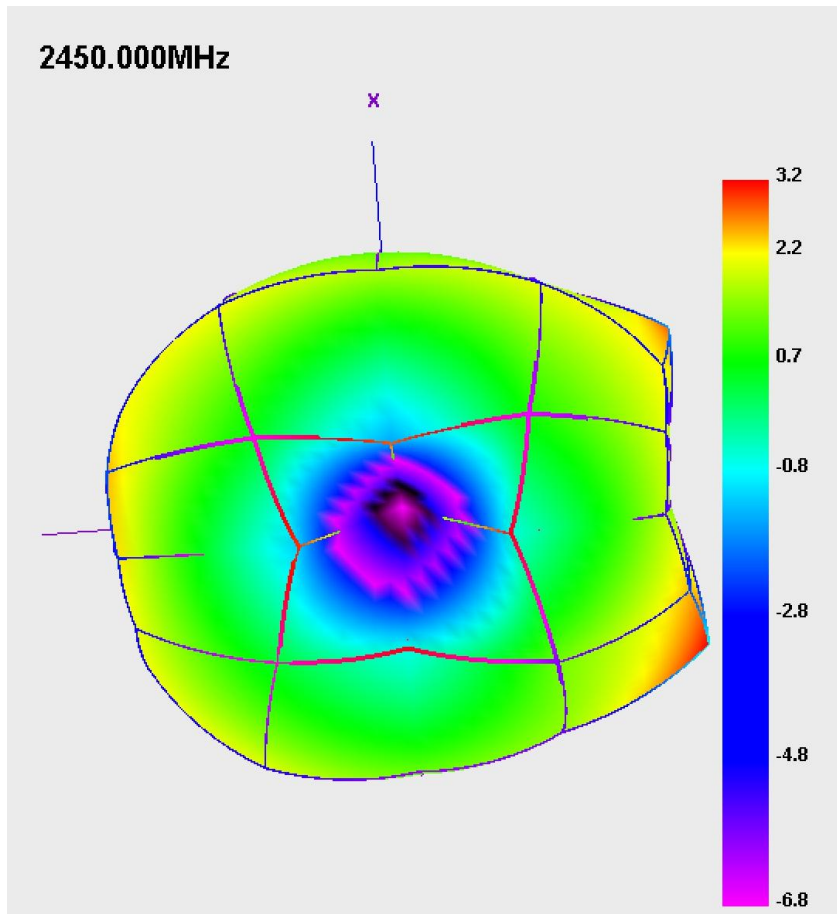


Efficiency&Gain

| Freq (MHz) | Effi (%) | Gain (dBi) |
|------------|----------|------------|
| 2400 | 62.8 | 3.27 |
| 2410 | 60.94 | 3.23 |
| 2420 | 61.36 | 3.44 |
| 2430 | 60.79 | 3.58 |
| 2440 | 58.65 | 3.55 |
| 2450 | 53.39 | 3.18 |
| 2460 | 53.14 | 3.17 |
| 2470 | 52.15 | 3.11 |
| 2480 | 52.38 | 3.19 |
| 2490 | 54.24 | 3.35 |
| 2500 | 53.04 | 3.43 |

| Freq (MHz) | Effi (%) | Gain (dBi) |
|------------|----------|------------|
| 5000 | 36.79 | 2.57 |
| 5100 | 42.85 | 3.94 |
| 5200 | 38.63 | 3.2 |
| 5300 | 38.52 | 3.13 |
| 5400 | 43 | 3.69 |
| 5500 | 40.58 | 3.61 |
| 5600 | 39.79 | 3.89 |
| 5700 | 36.88 | 3.58 |
| 5800 | 33.18 | 2.75 |
| 5900 | 31.97 | 3.61 |

Radiation Pattern





**THANK
YOU**