

深圳市天联凌科技有限公司

Shenzhen SKYLink Technology Co.,Ltd

天线规格书

编号: SLS0A20211130ZCH01

客户名称: 普宙

项目名称: S400 飞机端双频天线

产品描述: 定制调试 高增益双频 PCB 天线 2.4G/5.8G 增益 4db 1.37 射频同轴线 线长 450mm 一代端子

客户料号: 35-0324-225

我司料号: WF2458V4. C137. 450B. 1

板 本: V1.0 (第一次发行)

日 期: 2021-11-30

此承认书严禁修改

客户

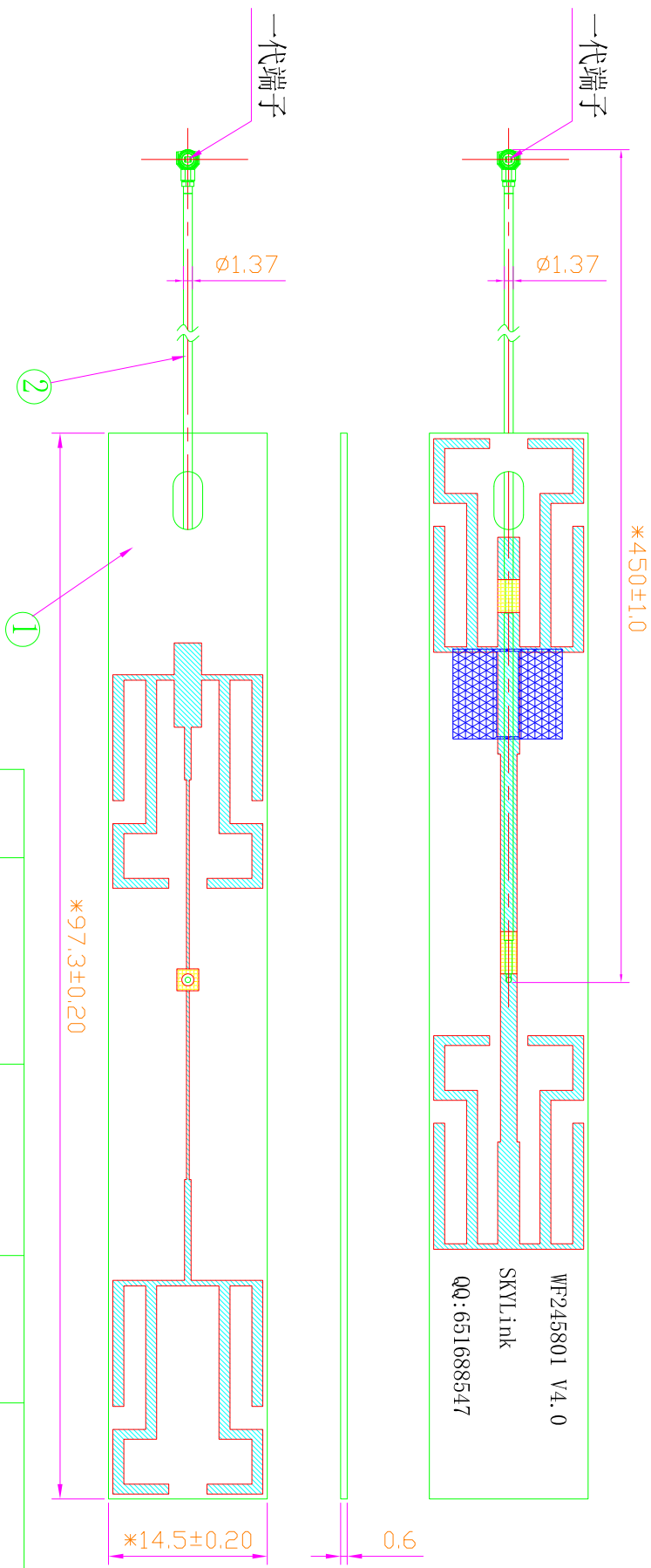
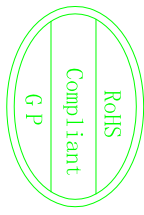
工程	采购	承认

天联凌

研发	工程	审核

● Specification Summary

A. Electrical Characteristics	
Frequency	2400MHz ~2500MHz 5150~5850MHZ
VSWR	<2.0
Efficiency	>40%
Peak Gain	4dbi @2400MHz ~2500MHz 3dbi @5150MHz ~5850MH
Impedance	50 Ohm
Polarization	Line
B. Material & Mechanical Characteristics	
Material of Radiator	Cu
Cable Type	RG137 Black
Connector Type	UFL-1
Dimension	At Attachment
Heat-durability	280±5°C, 10sec.
C. Environmental Characteristics	
Operation Temperature	- 20 °C ~ + 80 °C
Storage Temperature	- 30 °C ~ + 85 °C



注：
1. “*”为重点尺寸；
2. 未标注尺寸请依图纸；
3. Pb、Hg、Cr+6、PBBS、PBDEs各项小于1000PPM, Cd小于100PPM.

No.	PartName	Material	Colour	Remark
2	同轴线	镀银铜丝	黑色	
1	天线	PCB	绿色	

深 圳 天 联 凌 科 技 有 限 公 司 SHEN ZHEN SKYLink CO., LTD	
Project	WiFi天线
Part Name	WiFi天线
Part No.	WF2458V4. C137. 450P. 1
Material	
Date	2021-11-29
Designed by	
Checked by	MD
Material	RF

Rev	Description	Date	Remark
A	New drawing		
1			

● Test Equipment & Conditions

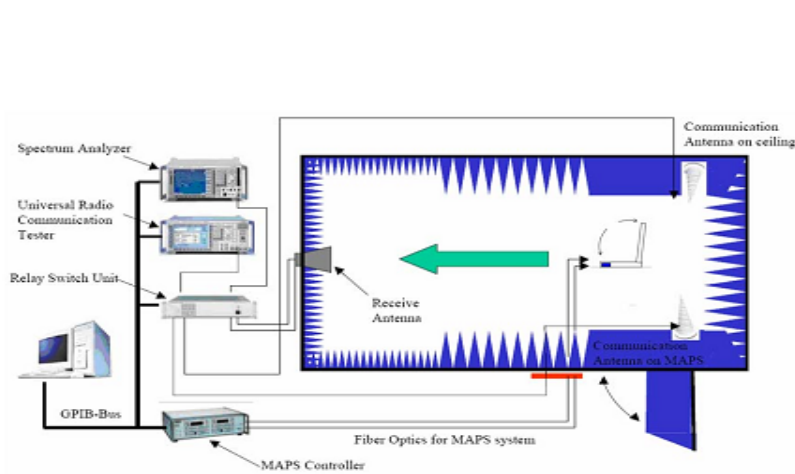
1. Network Analyzers :

Agilent 8753D 5071B

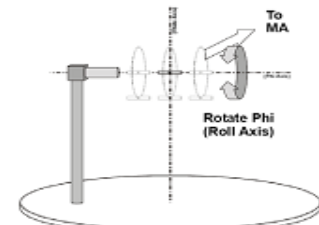
Communications Test Set:

Agilent E5515C CMW500

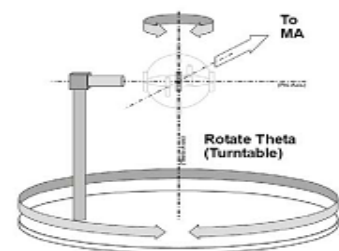
2. 3D Chamber Test System



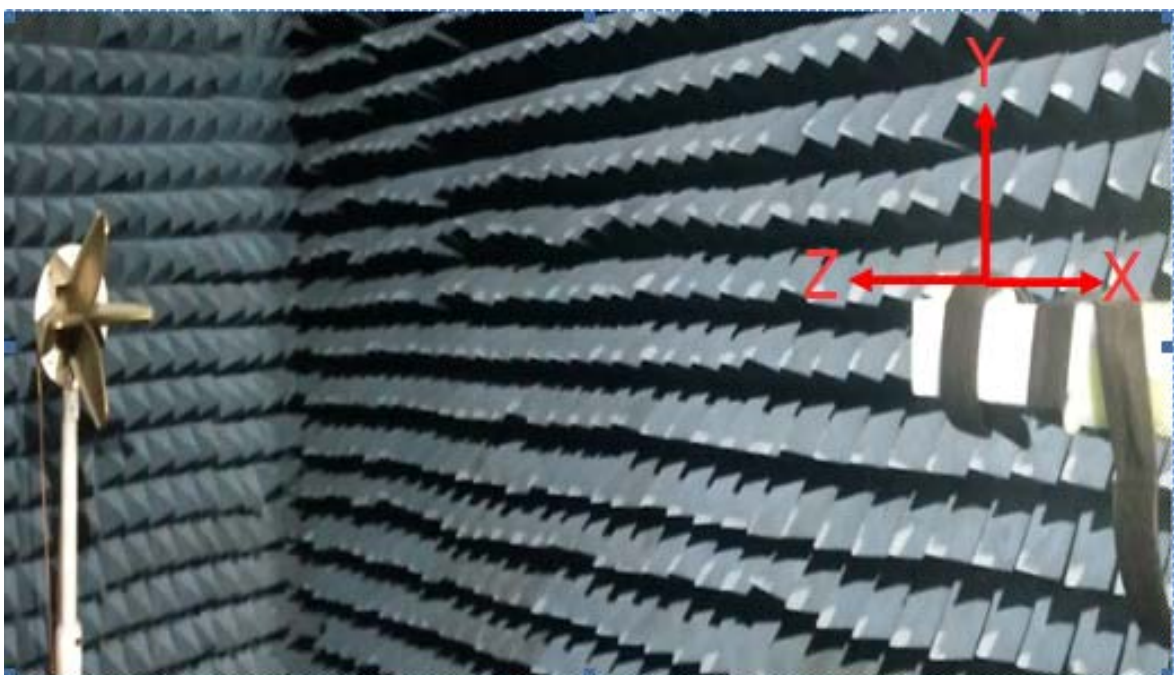
(Testing by 3D anechoic chamber)



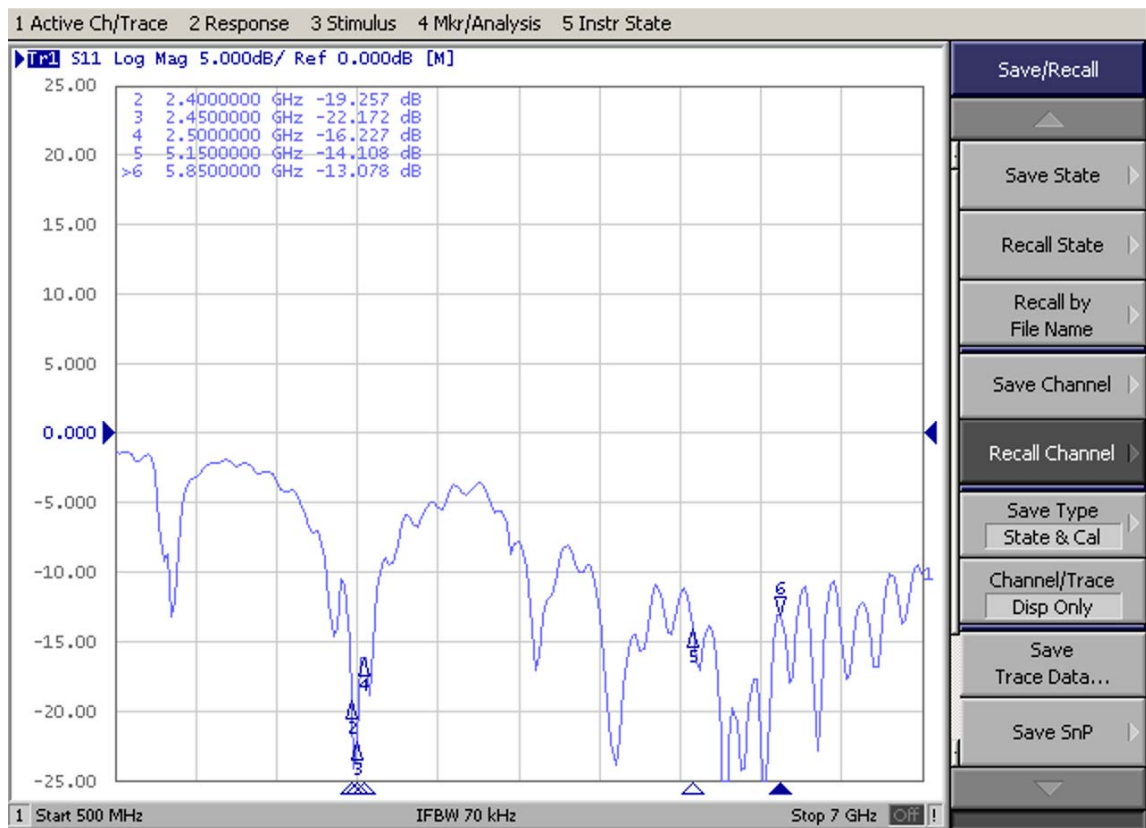
Phi axis test



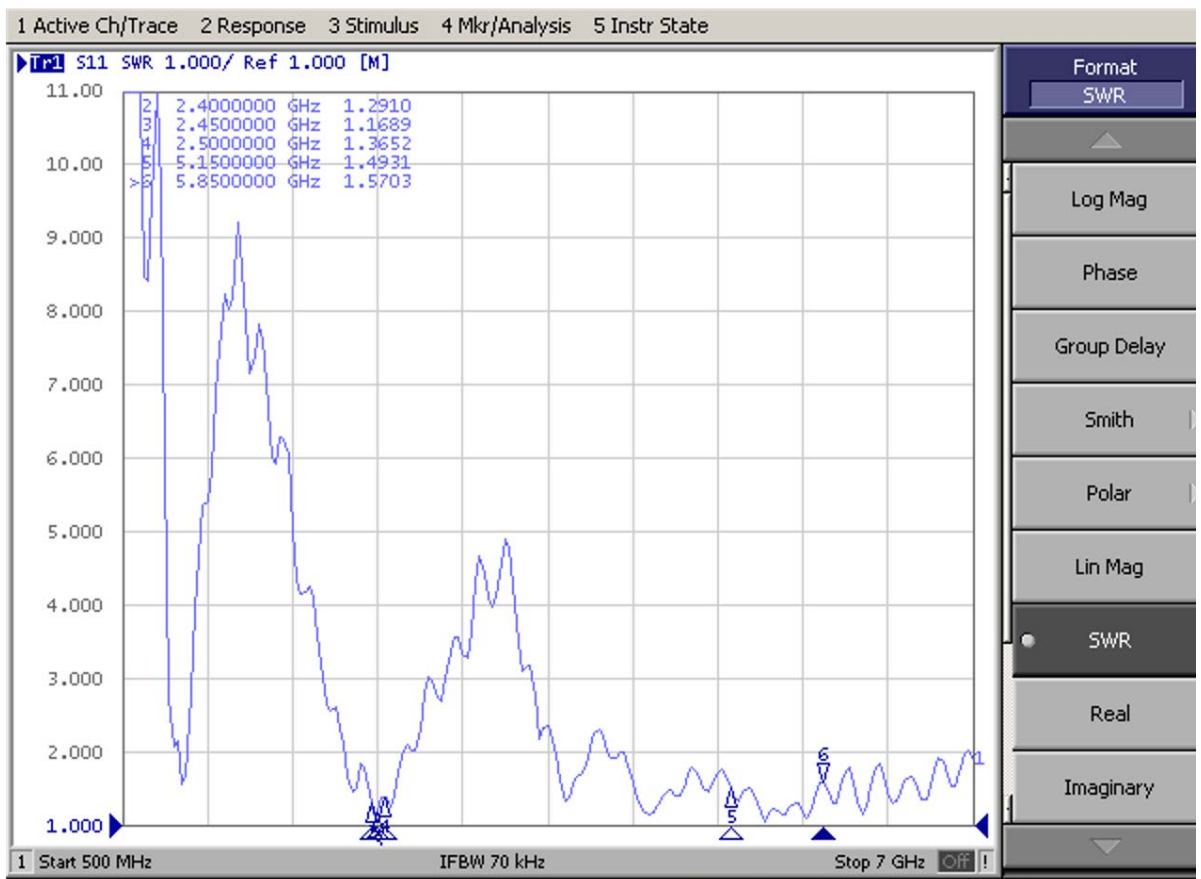
Theta axis test



◆ Return Loss



◆ VSWR

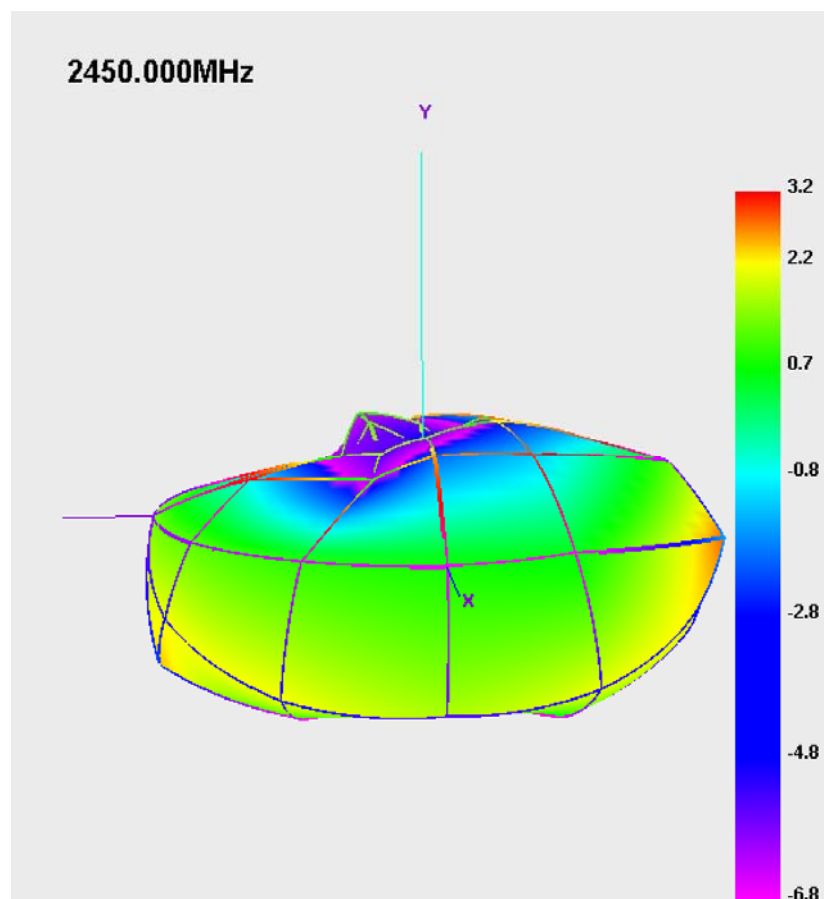
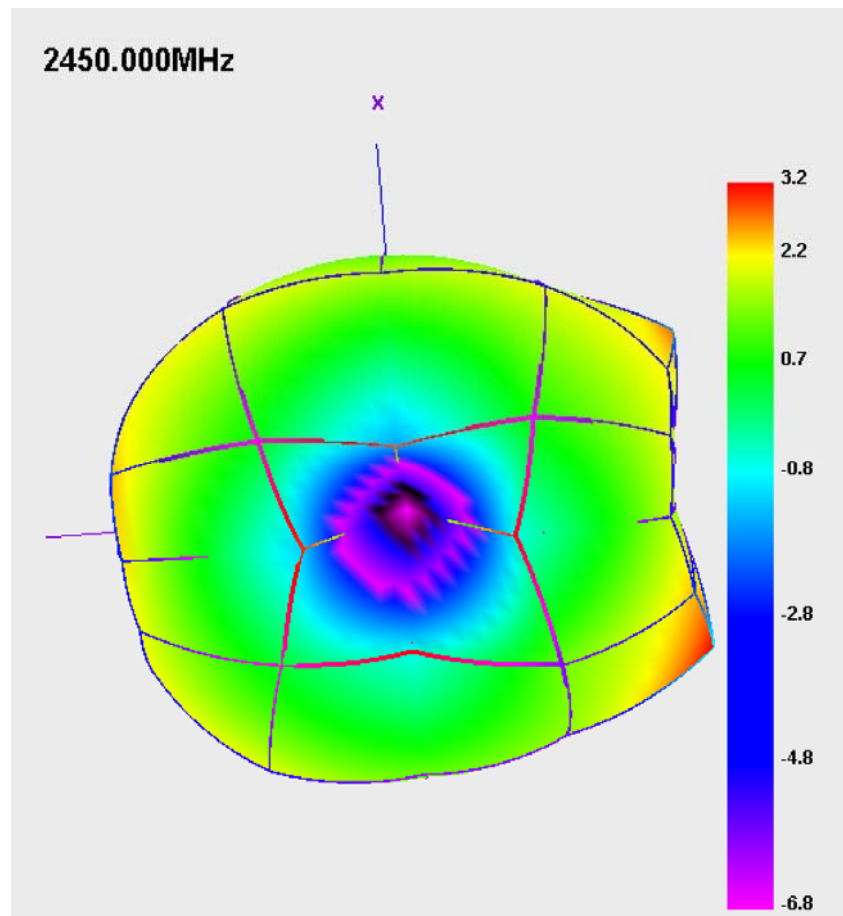


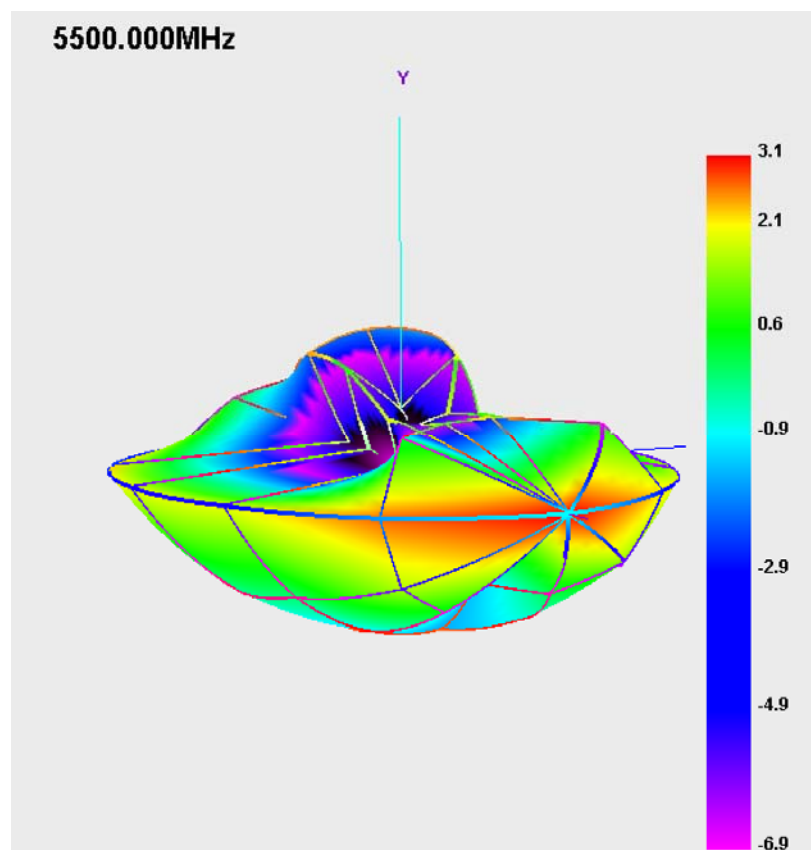
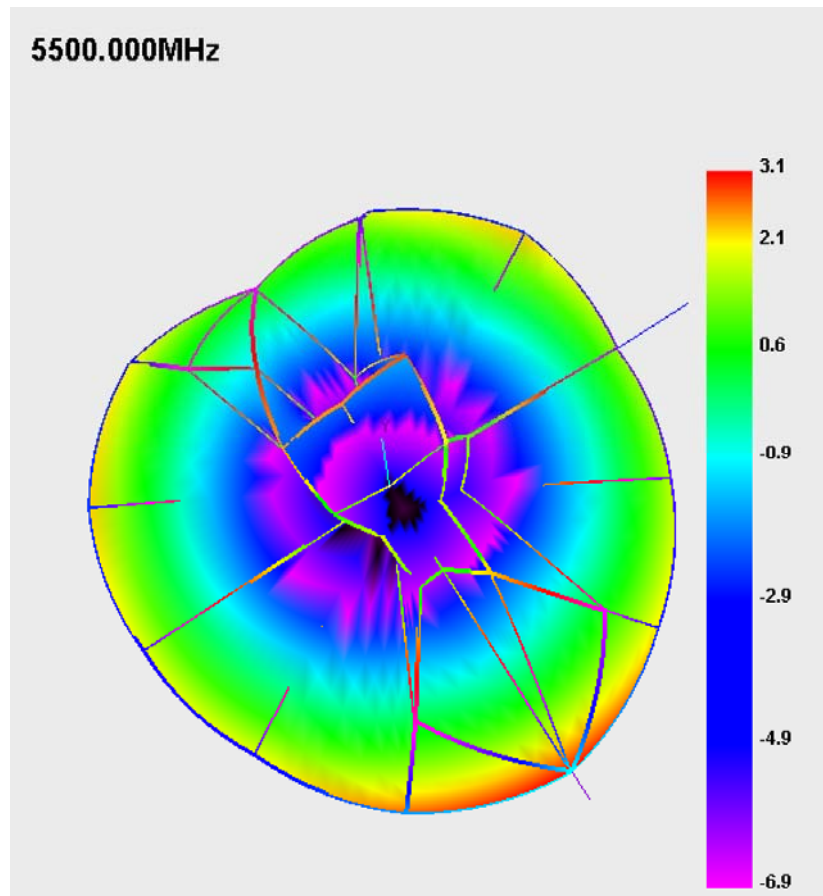
◆ Gain & Efficiency

Freq (MHz)	Effi (%)	Gain (dBi)
2400	62.8	3.27
2410	60.94	3.23
2420	61.36	3.44
2430	60.79	3.58
2440	58.65	3.55
2450	53.39	3.18
2460	53.14	3.17
2470	52.15	3.11
2480	52.38	3.19
2490	54.24	3.35
2500	53.04	3.43

Freq (MHz)	Effi (%)	Gain (dBi)
5000	36.79	2.57
5100	42.85	3.54
5200	38.63	3.2
5300	38.52	3.13
5400	43	3.69
5500	40.58	3.61
5600	39.79	3.59
5700	36.88	3.58
5800	33.18	2.75
5900	31.97	3.61

◆ Radiation Pattern





◆ 天线图片

