

Application:

WLAN, 802.11b/g, Bluetooth, etc...

Features

SMD, high reliability, ultra Impact, Omni-directional...

Part number

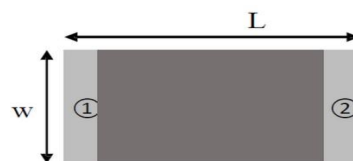
AAN 1608 F3 P3 2G45
 (1) (2) (3) (4) (5)

(1)Product Type	Ceramic Antenna
(2)Size Code	1.6x0.8mm
(3)Type Code	F3
(4)Packing	Paper &Reel
(5)Frequency	2.45GHz
(6)Internal code	

Electrical Specification

Working Frequency Range	2400 ~2484 MHz
Peak Gain	2.6 dBi (Typ.)
Impedance	50 Ohm
Return loss	10 dB (Min)
Polarization	Linear
Azimuth Beamwidth	Omni-directional
Operation Temperature(°C)	-40 ~85°C

The specification is defined on EVB.



(Top View)



(Bottom View)

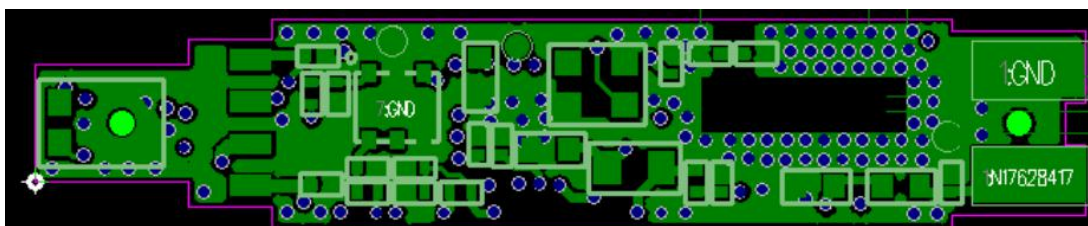
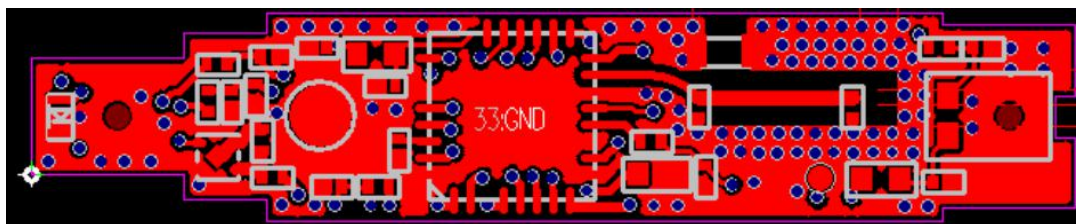
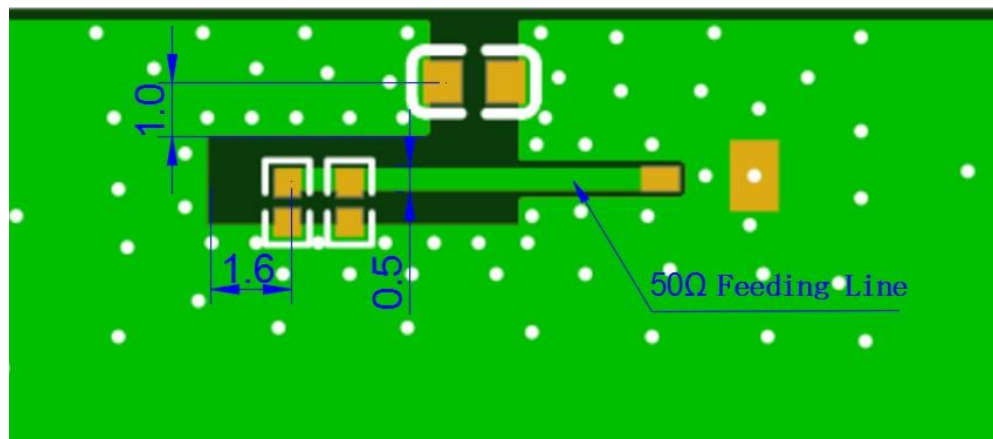
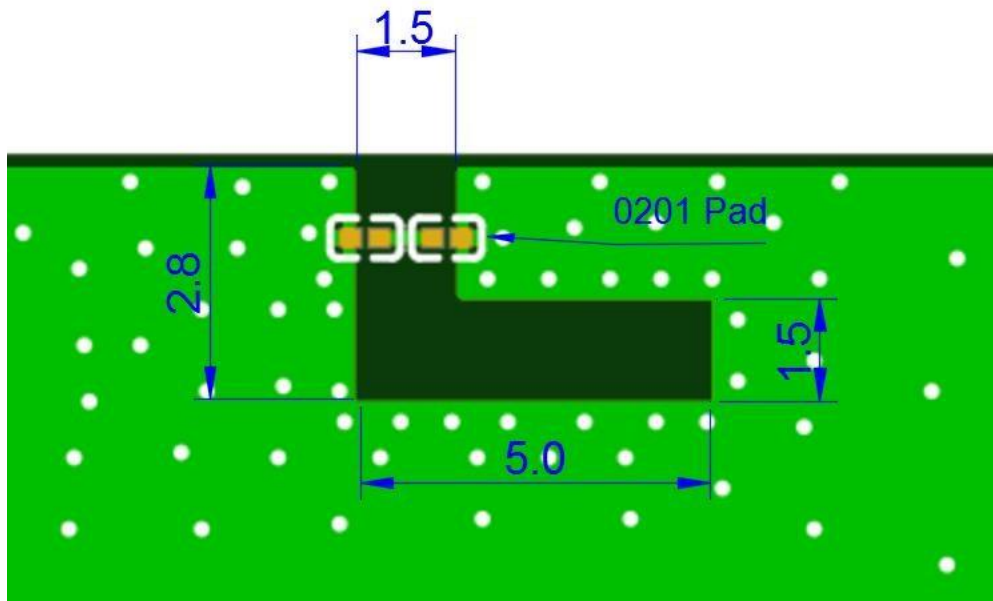
Number	Terminal Name
①	INPUT
②	NC



(Side View)

Symbols	L	W	T	A
Dimensions	1.60±0.20	0.80±0.20	0.80±0.10	0.30±0.10

● Evaluation Board and Matching Circuits

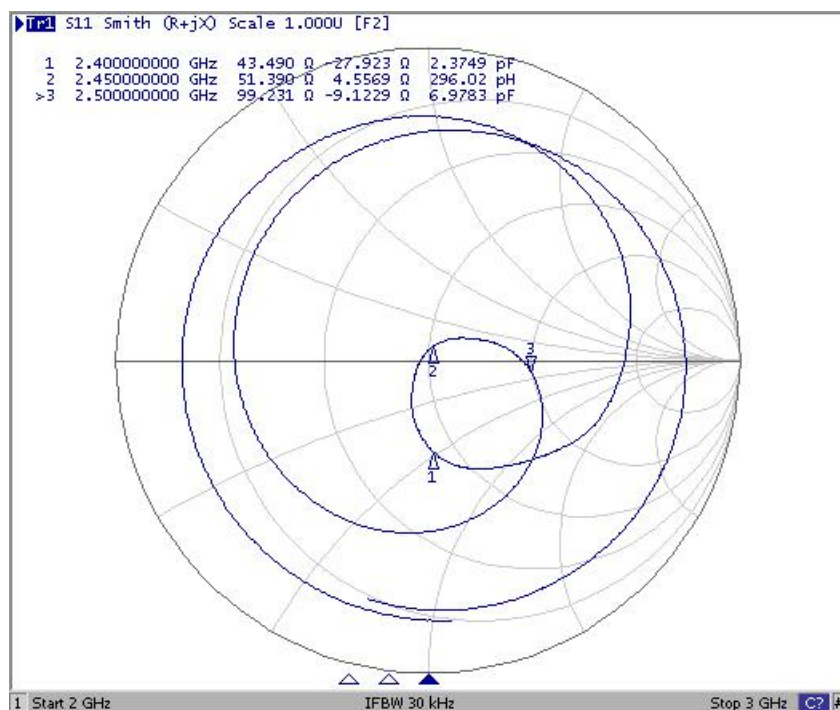


● Electrical Characteristics

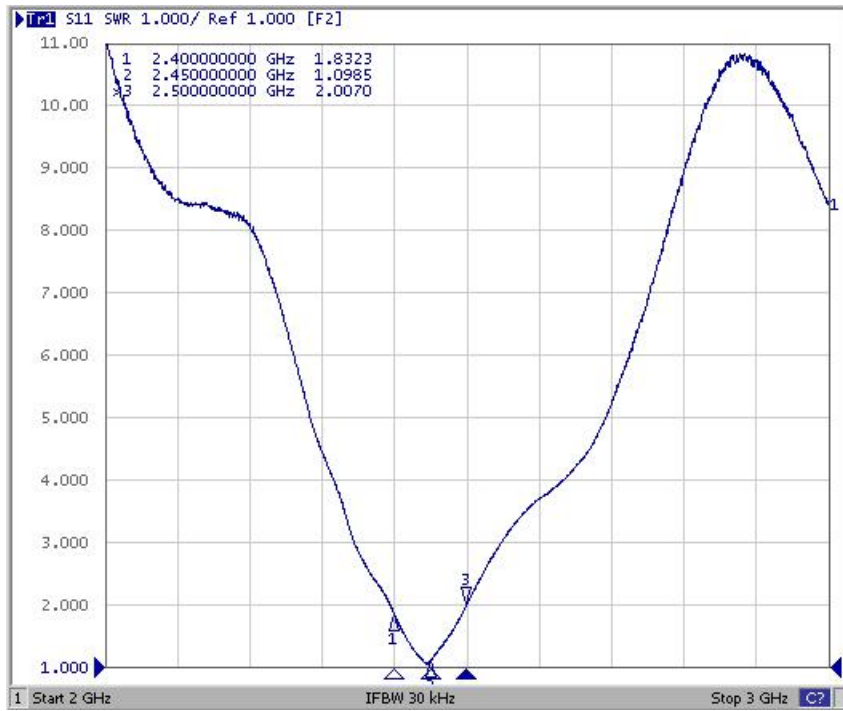
Item	Feature	Specification
1	Central frequency	2445MHz
2	Bandwidth	>100MHz
3	Peak gain	>3dBi
4	VSWR	<2
5	Polarization	Linear
6	Azimuth beamwidth	Omnidirectional
7	Impedance	50 Ω

NOTE: The specification is defined based on the test board dimension.

(1) Smith Chart

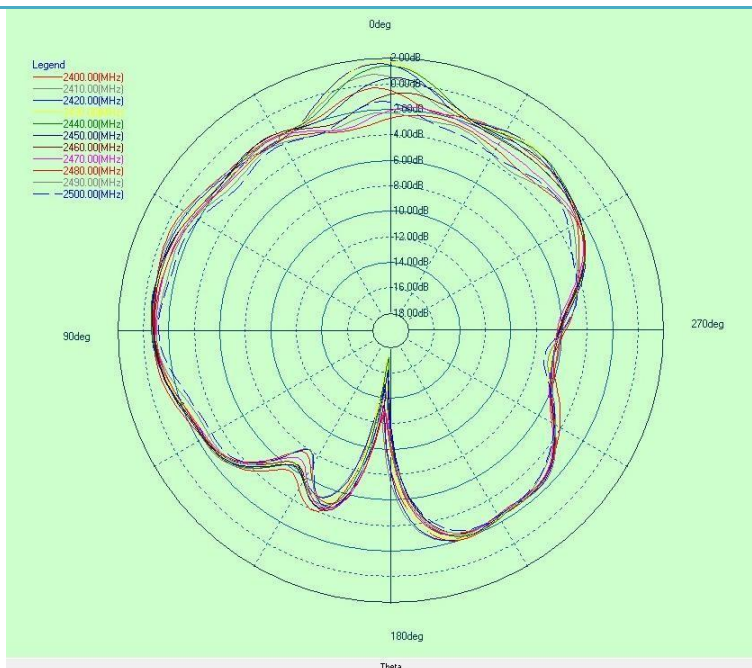


(2) S-Parameter

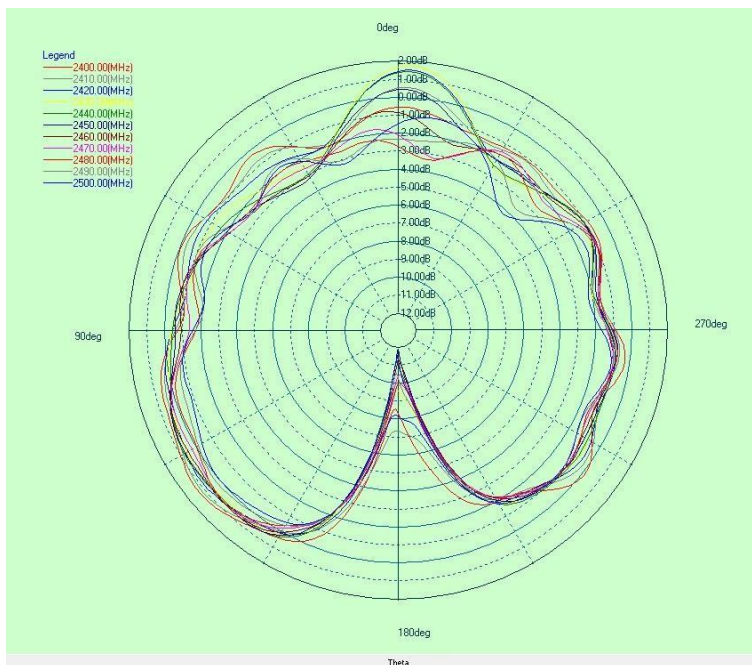


(3) Radiation Pattern

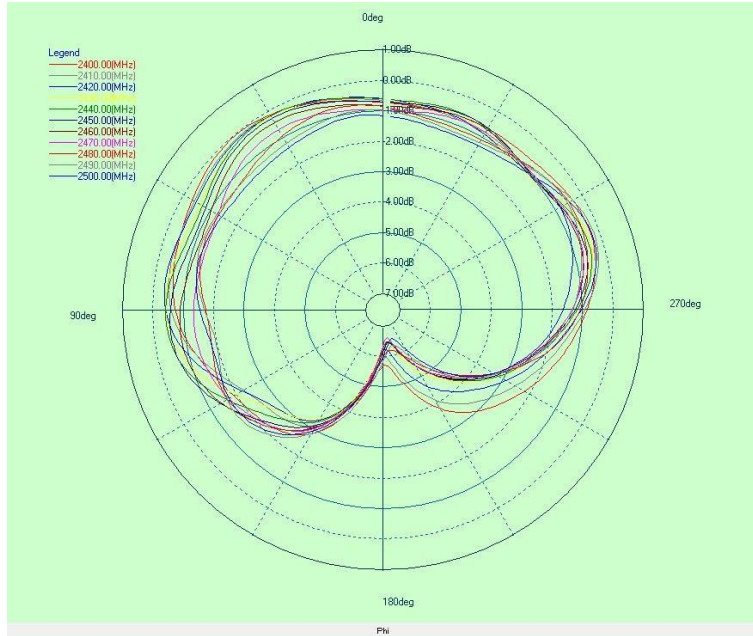




Y-Z Plane



X-Z Plane



X-Y Plane

Frequency	2400MHz	2450MHz	2490MHz
Avg. gain	1.20	0.90	0.35
Peak gain	2.6	2.6	2.4
Efficiency	62%	55%	52%

● Dependability Test

Test Temperature	25°C±3°C
Operating Temperature	-25°C~+85°C
Temperature	5~+40°C
Relative Humidity	20~70%HR