

# KC.IA.00401 BT/WiFi

## Antenna Specification

### 1. Application:

This application shall apply for antenna unit which shall be used such as automotive, conventional communications, smart home, etc..

### 2. Electrical Specification:

*Those specifications were specially defined for customer's model, and all characteristics were measured under the model's handset testing jig .*

#### 2-1. Frequency Band:


Frequency Band	MHz
BT/WIFI	2400~2500MHz

#### 2-2. Impedance

50 ohm nominal

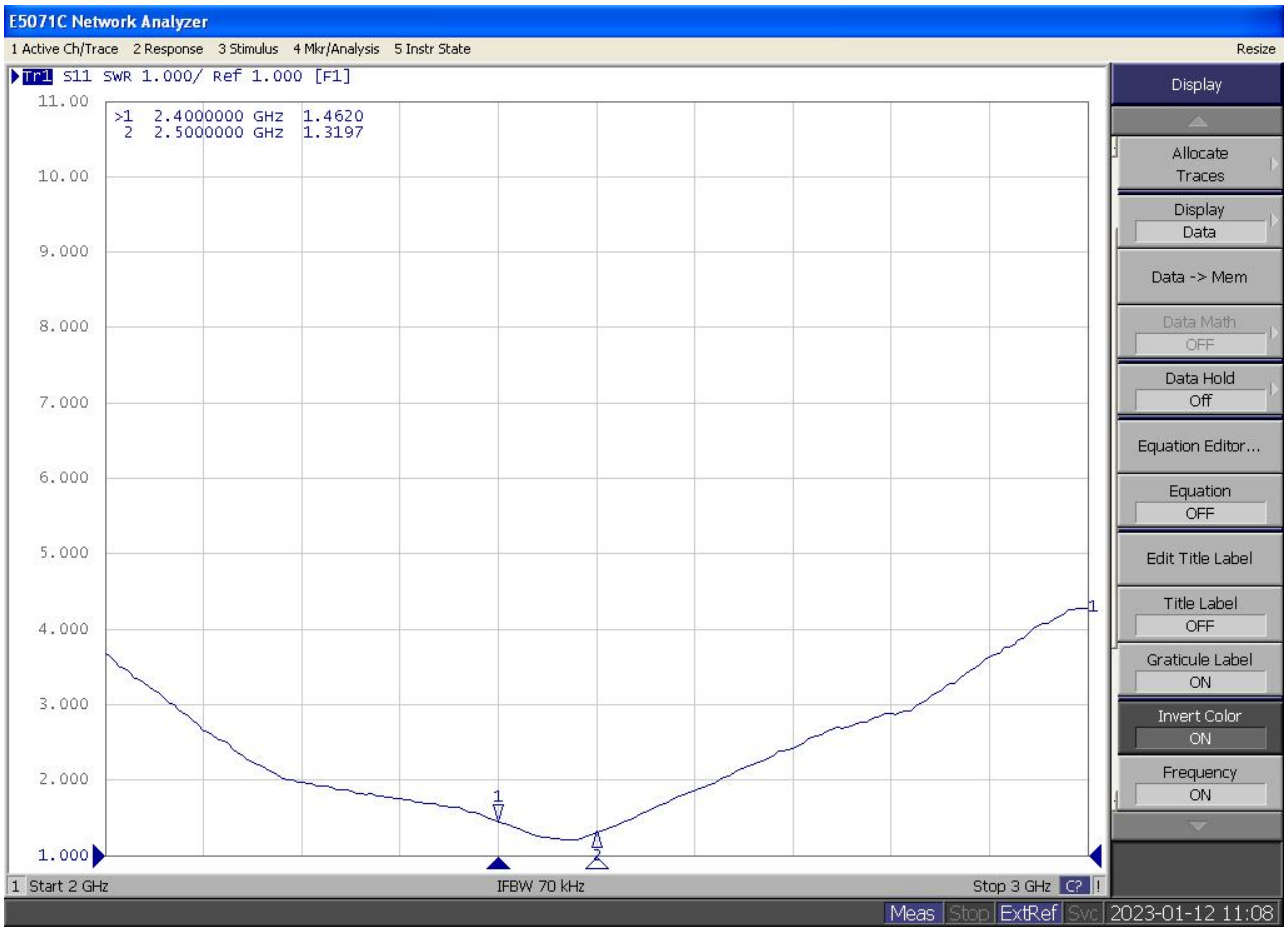
#### 2-3. VSWR


2-3-1. Measurement frequency points and VSWR value

UNLESS OTHER SPECIFIED TOLERANCES ON :			TOXU TECHNOLOGY CO., LTD.
X = ±	X.X = ±		
ANGLES = ±		HOLEDIA = ±	
SCALE :	UNIT : mm	THIS DRAWINGS AND SPECIFICATIONS ARE THE PROPERTY OF KINGRF TECHNOLOGY CO.,LTD.AND SHALL NOT BE REPRODUCED OR USED AS THE BASIS FOR THE MANUFACTURE OR SALE OF APPARATUS OR DEVICES WITHOUT PERMISSION	
DRAWN BY: LI	CHECKED BY: YS		
DESIGNED BY: De wen	APPROVED BY: YS		
TITLE : KC.IA.00401 Antenna Specification			SPEC REV.
			P0

# BT/WiFi

Frequency Band(MHz)	2400	2500
Typical Value: (VSWR)	1.4	1.3



UNLESS OTHER SPECIFIED TOLERANCES ON :		 <b>TOXU TECHNOLOGY CO., LTD.</b>
X = ±	X.X = ±	
±	X.XX = ±	
ANGLES = ±	HOLEDIA = ±	
SCALE :	UNIT : mm	THIS DRAWINGS AND SPECIFICATIONS ARE THE PROPERTY OF KINGRF TECHNOLOGY CO.,LTD.AND SHALL NOT BE REPRODUCED OR USED AS THE BASIS FOR THE MANUFACTURE OR SALE OF APPARATUS OR DEVICES WITHOUT PERMISSION
DRAWN BY: LI	CHECKED BY: YS	
DESIGNED BY: De wen	APPROVED BY: YS	
TITLE : KC.IA.00401 Antenna Specification		SPEC REV.
		P0

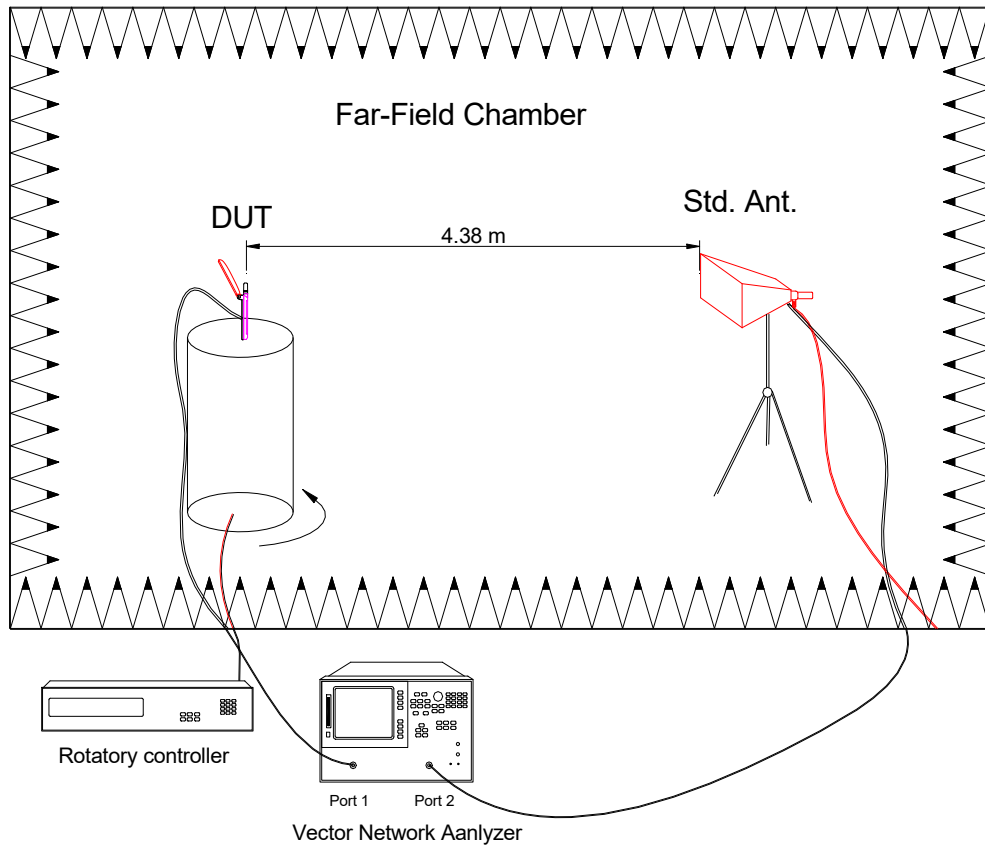
2-4. Efficiency and Gain

4-5.1 Measure method

1. Using a low loss coaxial cable to link a standard handset jig
2. Fixed this handset jig on chamber's rotator plane
3. Linking jig into network analyzer port and using a probing horn antenna to collect data.
4. Using another standard gain horn antenna to calibrated those data

4-5.2 Chamber definition

Z

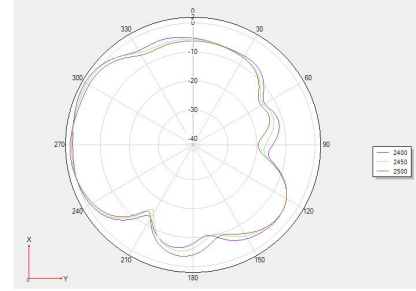
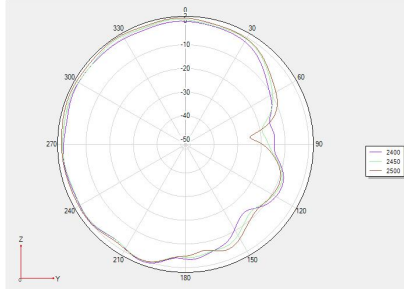
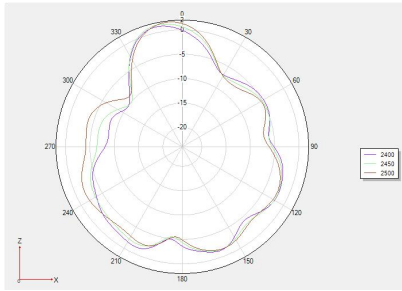
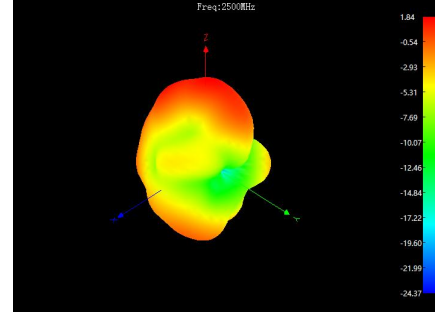
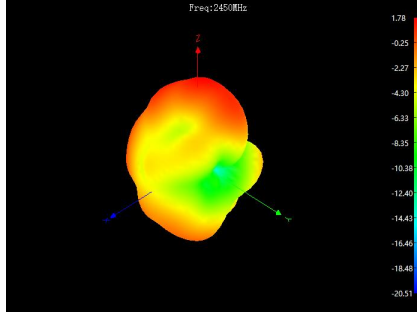
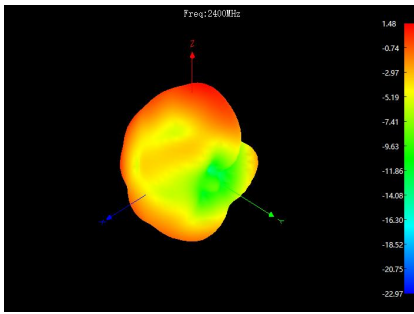


- (7mx4mx3m) which satisfied far-field condition was applied to avoid multi-path effect
2. The quite room region is 40cmx40cmx40cm at the center of rotator
3. The distance between DUT and standard antenna is 4.38 m
4. Probing antenna (9120D horn antenna) and standard gain horn antenna (BBHA9120 LPF 700MHz ~6GHz)

UNLESS OTHER SPECIFIED TOLERANCES ON : <b>X = ±</b> <b>X.X = ±</b> <b>X.XX = ±</b> ± <b>ANGLES = ±</b> <b>HOLEDIA = ±</b>		 <b>TOXU TECHNOLOGY CO., LTD.</b>
<b>SCALE :</b>	<b>UNIT : mm</b>	THIS DRAWINGS AND SPECIFICATIONS ARE THE PROPERTY OF KINGRF TECHNOLOGY CO.,LTD.AND SHALL NOT BE REPRODUCED OR USED AS THE BASIS FOR THE MANUFACTURE OR SALE OF APPARATUS OR DEVICES WITHOUT PERMISSION
<b>DRAWN BY: LI</b>	<b>CHECKED BY: YS</b>	
<b>DESIGNED BY: De wen</b>	<b>APPROVED BY: YS</b>	
<b>TITLE : KC.IA.00401 Antenna Specification</b>		<b>SPEC REV.</b> <b>P0</b>

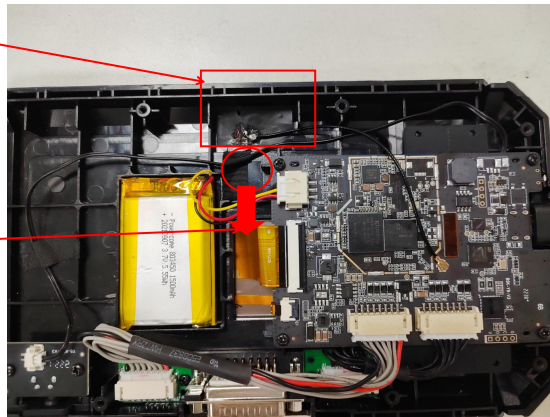
## 2-4-1BT/ Efficiency and Gain

Frequency/MHz	MaxGain/dBi	Efficiency / %	Frequency/MHz	MaxGain/dBi	Efficiency / %
2400	1.48	53.58	2460	1.43	49.32
2410	2.00	56.49	2470	1.78	49.43
2420	1.75	56.49	2480	1.51	51.88
2430	1.96	53.33	2490	1.76	52.6
2440	1.67	51.17	2500	1.84	53.95
2450	1.78	49.77			



天线位置，对齐壳  
料中心俩端的加强  
筋贴

电源开关连接线需  
远离 FPC 天线



UNLESS OTHER SPECIFIED TOLERANCES ON :  
 $X = \pm$                        $X.X = \pm$                        $X.XX = \pm$   
 $\pm$   
**ANGLES =  $\pm$**                       **HOLEDIA =  $\pm$**

**TOXU**  
同讯技术

**TOXU TECHNOLOGY CO., LTD.**

**SCALE :**                      **UNIT : mm**  
**DRAWN BY: LI**                      **CHECKED BY: YS**  
**DESIGNED BY: De wen**                      **APPROVED BY: YS**

THIS DRAWINGS AND SPECIFICATIONS ARE THE PROPERTY OF KINGRF TECHNOLOGY CO.,LTD.AND SHALL NOT BE REPRODUCED OR USED AS THE BASIS FOR THE MANUFACTURE OR SALE OF APPARATUS OR DEVICES WITHOUT PERMISSION

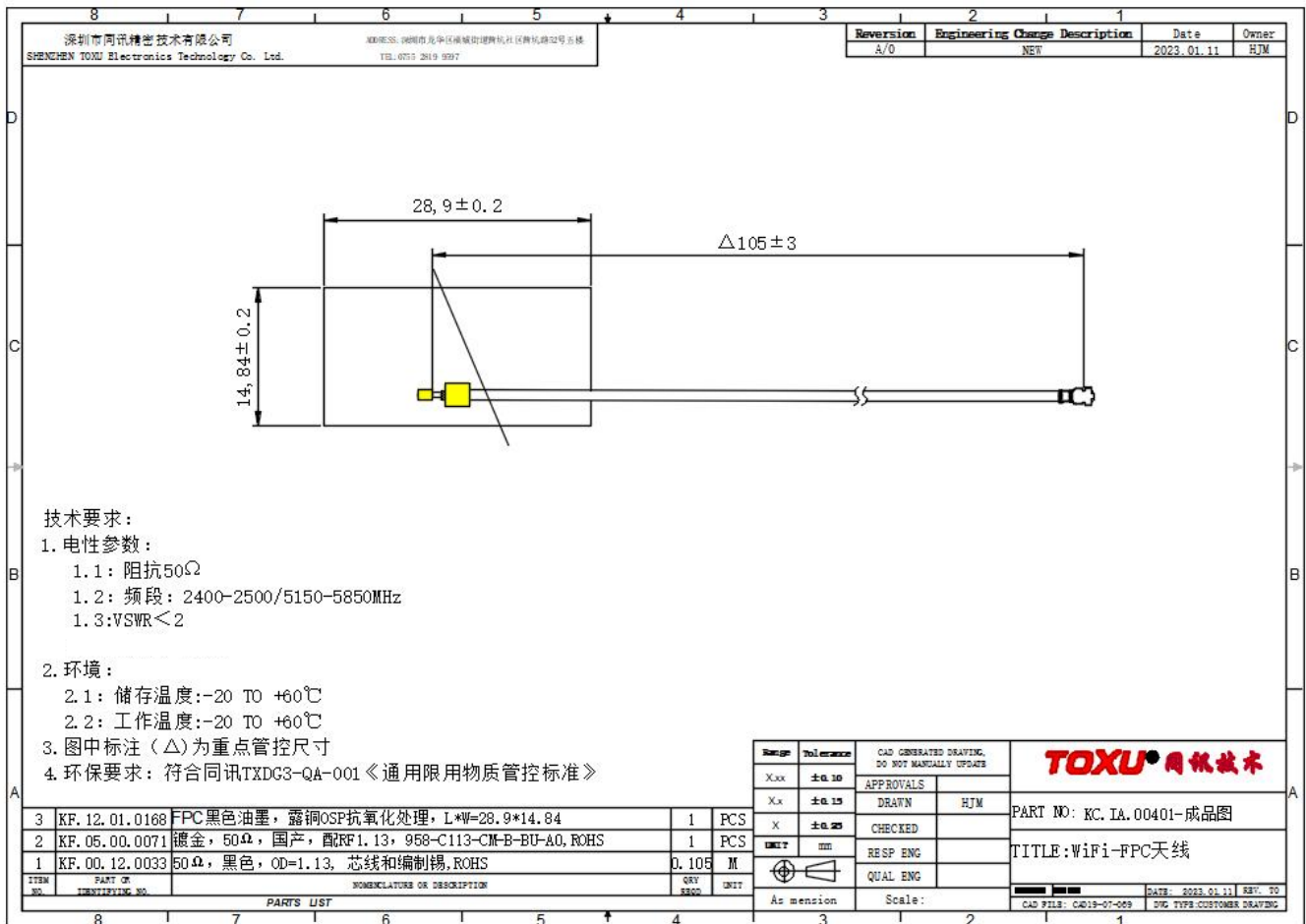
**TITLE : KC.IA.00401 Antenna Specification**

**SPEC REV.**  
**P0**

### 3. Mechanical Specification:

#### 3-1. Mechanical Configuration (Unit: mm)

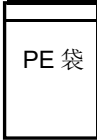
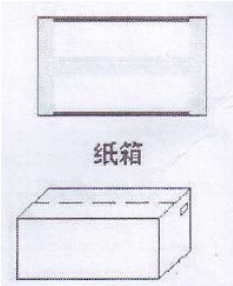
The appearance of the antenna is according to drawing




UNLESS OTHER SPECIFIED TOLERANCES ON :			<b>TOXU TECHNOLOGY CO., LTD.</b>
$X = \pm$ $X.X = \pm$ $X.XX = \pm$	$XO = \pm$ $XO.O = \pm$ $XO.OO = \pm$		
<b>ANGLES = ±</b> <b>SCALE :</b>	<b>HOLEDIA = ±</b> <b>UNIT : mm</b>	THIS DRAWINGS AND SPECIFICATIONS ARE THE PROPERTY OF KINGRF TECHNOLOGY CO.,LTD.AND SHALL NOT BE REPRODUCED OR USED AS THE BASIS FOR THE MANUFACTURE OR SALE OF APPARATUS OR DEVICES WITHOUT PERMISSION	
<b>DRAWN BY: LI</b> <b>DESIGNED BY: De wen</b>	<b>CHECKED BY: YS</b> <b>APPROVED BY: YS</b>		
<b>TITLE : KC.IA.00401 Antenna Specification</b>			

## 4 .Packaging specification:

<b>Product number: KC.IA.00401</b>			
<b>Product model: WIFI&amp;BT</b>			
<b>一、 Label requirements:</b>			
<b>Customer</b>	xxx		
<b>supplier</b>	xxxxxx		
<b>Material coding</b>	xx		
<b>Product model</b>	xx		
<b>Number</b>	XXX PCS	Factory date	X X X
<b>Remarks</b>			
<b>二、 Boxing:</b>			
<b>Job description:</b>			
<b>1. Inner packaging:</b>			
XXpcs A bag			
<b>2. External packaging:</b>			
Xx PCS ;			
<b>3. Matters needing attention:</b>			
a. Whether to add partition and pearl cotton;			
b. Label attachments, such as ROHS, etc.;			

UNLESS OTHER SPECIFIED TOLERANCES ON :		 <b>TOXU TECHNOLOGY CO., LTD.</b>
X = ±	X.X = ±	
±	X.XX = ±	
<b>ANGLES = ±</b>	<b>HOLEDIA = ±</b>	
<b>SCALE :</b>	<b>UNIT : mm</b>	THIS DRAWINGS AND SPECIFICATIONS ARE THE PROPERTY OF KINGRF TECHNOLOGY CO.,LTD.AND SHALL NOT BE REPRODUCED OR USED AS THE BASIS FOR THE MANUFACTURE OR SALE OF APPARATUS OR DEVICES WITHOUT PERMISSION
<b>DRAWN BY: LI</b>	<b>CHECKED BY: YS</b>	
<b>DESIGNED BY: De wen</b>	<b>APPROVED BY: YS</b>	
<b>TITLE : KC.IA.00401 Antenna Specification</b>		<b>SPEC REV.</b>
		<b>P0</b>