



TEST REPORT

Reference No...... : WTX23X01002266W
FCC ID..... : 2A8T7KINGS6
Applicant : Shenzhen Kingbolen Electrics Technology Co., Ltd.
Address : B1020-1028 Yousong Technology Building, 1st Donghuan Rd.,Longhua
Dist., Shenzhen, China
Manufacturer..... : Shenzhen Kingbolen Electrics Technology Co., Ltd.
Address : B1020-1028 Yousong Technology Building, 1st Donghuan Rd.,Longhua
Dist., Shenzhen, China
Product Name : KINGBOLEN S6
Model No...... : S6
Standards : FCC Part 2.1093,
IEEE Std C95.1: 2019
IEEE Std C95.3: 2002 + Rev. 2008
Date of Receipt sample : 2023-01-05
Date of Test..... : 2023-01-05 to 2023-01-09
Date of Issue : 2023-01-09
Test Report Form No...... : WTX_Part2_1093W
Test Result..... : **Pass**

Remarks:

The results shown in this test report refer only to the sample(s) tested, this test report cannot be reproduced, except in full, without prior written permission of the company. The report would be invalid without specific stamp of test institute and the signatures of approver.

Prepared By:

Waltek Testing Group (Shenzhen) Co., Ltd.

Address: 1/F., Room 101, Building 1, Hongwei Industrial Park, Liuxian 2nd Road,
Block 70 Bao'an District, Shenzhen, Guangdong, China
Tel.: +86-755-33663308 Fax.: +86-755-33663309 Email: sem@waltek.com.cn

Tested by:

Jack Sun

Jack Sun

Approved by:

Silin Chen

Silin Chen



TABLE OF CONTENTS

1. General Information	4
1.1 Product Description for Equipment Under Test (EUT).....	4
1.2 Test Standards	6
1.3 Test Methodology	6
1.4 Test Facility	6
2. Summary of Test Results	7
3. Specific Absorption Rate (SAR).....	8
3.1 Introduction.....	8
3.2 SAR Definition	8
4. SAR Measurement System.....	9
4.1 The Measurement System	9
4.2 Probe.....	9
4.3 Probe Calibration Process.....	11
4.4 Phantom	11
4.5 Device Holder.....	12
4.6 Test Equipment List.....	13
5. Tissue Simulating Liquids.....	14
5.1 Composition of Tissue Simulating Liquid.....	14
5.2 Tissue Dielectric Parameters for Head and Body Phantoms.....	15
5.3 Tissue Calibration Result.....	16
6. SAR Measurement Evaluation	17
6.1 Purpose of System Performance Check.....	17
6.2 System Setup	17
6.3 Validation Results.....	18
7. EUT Testing Position	19
7.1 Body Position	19
7.2 EUT Antenna Position	19
7.3 EUT Testing Position.....	20
8. SAR Measurement Procedures.....	21
8.1 Measurement Procedures	21
8.2 Spatial Peak SAR Evaluation	21
8.3 Area & Zoom Scan Procedures.....	22
8.4 Volume Scan Procedures.....	22
8.5 SAR Averaged Methods.....	22
8.6 Power Drift Monitoring.....	22
9. SAR Test Result	23
9.1 Conducted RF Output Power	23
9.2 Test Results for Standalone SAR Test.....	26
10. Measurement Uncertainty	29
10.1 Uncertainty for SAR Test.....	29
Annex A. Plots of System Performance Check	31
Annex B. Plots of SAR Measurement.....	37
Annex C. EUT Photos	45
Annex D. Test Setup Photos	54
Annex E. Calibration Certificate.....	56



Report version

Version No.	Date of issue	Description
Rev.00	2023-01-09	Original
/	/	/

WALTEK



1. General Information

1.1 Product Description for Equipment Under Test (EUT)

General Description of EUT	
Product Name:	KINGBOLEN S6
Trade Name:	KINGBOLEN
Model No.:	S6
Adding Model(s):	/
Rated Voltage:	DC 7.6V
Battery Capacity:	3150mAh
Software Version:	V1.0
Hardware Version:	V1.0
<i>Note: The test data is gathered from a production sample provided by the manufacturer.</i>	

WALTEK



Technical Characteristics of EUT:	
WiFi(2.4GHz)	
Support Standards:	802.11b, 802.11g, 802.11n-HT20/ HT40
Frequency Range:	2412-2462MHz for 802.11b/g/n(HT20), 2422-2452MHz for 802.11n(HT40)
RF Output Power:	20.22dBm (Conducted)
Type of Modulation:	DBPSK,BPSK,DQPSK,QPSK,16QAM,64QAM
Data Rate:	1-11Mbps, 6-54Mbps, up to 150Mbps
Quantity of Channels:	11 for 802.11b/g/n-HT20, 7 for 802.11n-HT40
Channel Separation:	5MHz
Antenna Type:	Integral Antenna
Antenna Gain:	0dBi
Bluetooth	
Bluetooth Version:	V5.2
Frequency Range:	2402-2480MHz
RF Output Power:	9.55dBm (Conducted)
Data Rate:	1Mbps, 2Mbps, 3Mbps
Modulation:	GFSK, $\pi/4$ DQPSK, 8DPSK
Quantity of Channels:	79/40
Channel Separation:	1MHz/2MHz
Antenna Type:	Integral Antenna
Antenna Gain:	0dBi
Wi-Fi(5GHz)	
Support Standards:	802.11n-HT20/40, 802.11ac-HT20/40/80
Frequency Range:	U-NII-1: 5180-5240MHz, U-NII-3: 5745-5825MHz
RF Output Power:	9.45dBm (Conducted)
Type of Modulation:	BPSK,QPSK, 16QAM, 64QAM, 256-QAM
Type of Antenna:	Integral Antenna
Antenna Gain:	0dBi
<i>Note: The Antenna Gain is provided by the customer and can affect the validity of results.</i>	



1.2 Test Standards

The following report is accordance with FCC 47 CFR Part 2.1093, IEEE Std C95.1: 2019, IEEE Std C95.3: 2002 + Rev. 2008, IEEE 1528:2013, and KDB 865664 D01 v01r04 and KDB 865664 D02 v01r02 and KDB 616217 D04 v01r02 and 248227 D01 802 11 Wi-Fi SAR v02r02.

The objective is to determine compliance with FCC Part 2.1093 of the Federal Communication Commissions rules.

Maintenance of compliance is the responsibility of the manufacturer. Any modification of the product, which is result in lowering the emission, should be checked to ensure compliance has been maintained.

1.3 Test Methodology

All measurements contained in this report were conducted with KDB 865664 D01 v01r04 and KDB 865664 D02 v01r02. The public notice KDB 447498 D01 v06 for Mobile and Portable Devices RF Exposure Procedure also.

1.4 Test Facility

Address of the test laboratory

Laboratory: Waltek Testing Group (Shenzhen) Co., Ltd.

Address: 1/F., Room 101, Building 1, Hongwei Industrial Park, Liuxian 2nd Road, Block 70 Bao'an District, Shenzhen, Guangdong, China

FCC – Registration No.: 125990

Waltek Testing Group (Shenzhen) Co., Ltd. EMC Laboratory has been registered and fully described in a report filed with the FCC (Federal Communications Commission). The acceptance letter from the FCC is maintained in our files. The Designation Number is CN5010. Test Firm Registration Number is 125990.

Industry Canada (IC) Registration No.: 11464A

The 3m Semi-anechoic chamber of Waltek Testing Group (Shenzhen) Co., Ltd. has been registered by Certification and Engineering Bureau of Industry Canada for radio equipment testing with Registration No.: 11464A.



2. Summary of Test Results

The maximum results of Specific Absorption Rate (SAR) have found during testing are as follows:

Frequency Band	Body (0mm Gap)	SAR _{1g} Limit (W/kg)
	Maximum SAR _{1g} (W/kg)	
WLAN 2.4GHz	1.400	1.6
Bluetooth	0.275	1.6
WLAN 5GHz	1.493	1.6

The device is in compliance with Specific Absorption Rate (SAR) for general population/uncontrolled exposure limits (1.6 W/kg) specified in FCC 47 CFR Part 2.1093 and IEEE Std C95.1: 2019, and had been tested in accordance with the measurement methods and procedure specified in KDB 865664 D01 v01r04, KDB 865664 D02 v01r02 and IEC 62209-2:2010+AMD1 (2019).

WALTEK



3. Specific Absorption Rate (SAR)

3.1 Introduction

SAR is related to the rate at which energy is absorbed per unit mass in an object exposed to a radio field. The SAR distribution in a biological body is complicated and is usually carried out by experimental techniques or numerical modeling. The standard recommends limits for two tiers of groups, occupational/controlled and general population/uncontrolled, based on a person's awareness and ability to exercise control over his or her exposure. In general, occupational/controlled exposure limits are higher than the limits for general population/uncontrolled.

3.2 SAR Definition

The SAR definition is the time derivative (rate) of the incremental energy (dW) absorbed by (dissipated in) an incremental mass (dm) contained in a volume element (dv) of a given density (ρ). The equation description is as below:

$$\text{SAR} = \frac{d}{dt} \left(\frac{dW}{dm} \right) = \frac{d}{dt} \left(\frac{dW}{\rho dv} \right)$$

SAR is expressed in units of Watts per kilogram (W/kg)

SAR measurement can be either related to the temperature elevation in tissue by

$$\text{SAR} = C \left(\frac{\delta T}{\delta t} \right)$$

Where: C is the specific heat capacity, δT is the temperature rise and δt is the exposure duration, or related to the electrical field in the tissue by

$$\text{SAR} = \frac{\sigma |E|^2}{\rho}$$

Where: σ is the conductivity of the tissue, ρ is the mass density of the tissue and E is the RMS electrical field strength.

However for evaluating SAR of low power transmitter, electrical field measurement is typically applied.



4. SAR Measurement System

4.1 The Measurement System

Comosar is a system that is able to determine the SAR distribution inside a phantom of human being according to different standards. The Comosar system consists of the following items:

- Main computer to control all the system
- 6 axis robot
- Data acquisition system
- Miniature E-field probe
- Phone holder
- Head simulating tissue

The following figure shows the system.

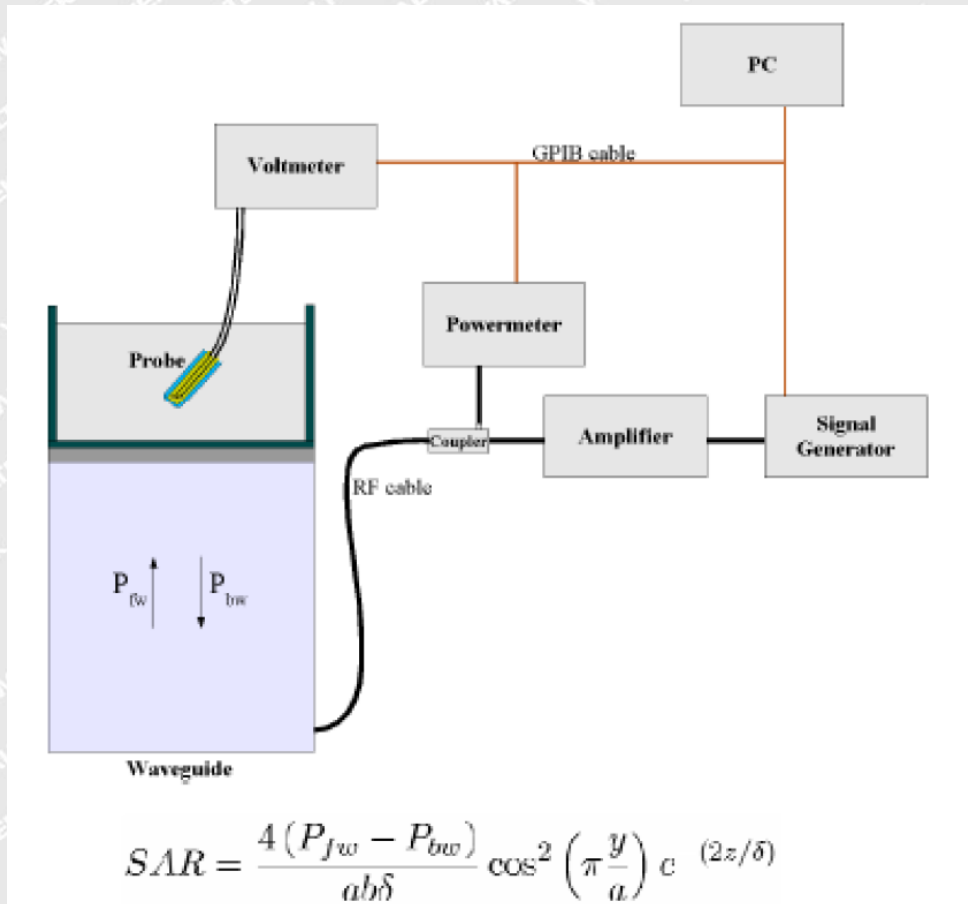


The EUT under test operating at the maximum power level is placed in the phone holder, under the phantom, which is filled with head simulating liquid. The E-Field probe measures the electric field inside the phantom. The OpenSAR software computes the results to give a SAR value in a 1g or 10g mass.

4.2 Probe

For the measurements the Specific Dosimetric E-Field Probe SSE2 SN 18/21 EPGO356, and refer to the calibration report for probe parameters.

Probe calibration is realized, in compliance with EN 62209-1 and IEEE 1528:2013 STD, with CALISAR, Antenna proprietary calibration system. The calibration is performed with the EN 62209-1 annexes technique using reference guide at the five frequencies.



Where :

P_{fw} = Forward Power

P_{bw} = Backward Power

a and b = Waveguide dimensions

l = Skin depth

Keithley configuration:

Rate = Medium; Filter = ON; RDGS = 10; Filter type = Moving Average; Range auto after each calibration, a SAR measurement is performed on a validation dipole and compared with a NPL calibrated probe, to verify it.

The calibration factors, CF(N), for the 3 sensors corresponding to dipole 1, dipole 2 and dipole 3 are:

$$CF(N) = SAR(N) / V_{lin}(N) \quad (N=1,2,3)$$

The linearised output voltage V_{lin}(N) is obtained from the displayed output voltage V(N) using

$$V_{lin}(N) = V(N) * (1 + V(N) / DCP(N)) \quad (N=1,2,3)$$

where DCP is the diode compression point in mV.

Waltek Testing Group (Shenzhen) Co., Ltd.

[Http://www.waltek.com.cn](http://www.waltek.com.cn)



4.3 Probe Calibration Process

Dosimetric Assessment Procedure

Each E-Probe/Probe Amplifier combination has unique calibration parameters. SATIMO Probe calibration procedure is conducted to determine the proper amplifier settings to enter in the probe parameters. The amplifier settings are determined for a given frequency by subjecting the probe to a known E-field density (1 mW/cm²) using an with CALISAR, Antenna proprietary calibration system.

Free Space Assessment Procedure

The free space E-field from amplified probe outputs is determined in a test chamber. This calibration can be performed in a TEM cell if the frequency is below 1 GHz and in a waveguide or other methodologies above 1 GHz for free space. For the free space calibration, the probe is placed in the volumetric center of the cavity and at the proper orientation with the field. The probe is rotated 360 degrees until the three channels show the maximum reading. The power density readings equates to 1mW/cm².

Temperature Assessment Procedure

E-field temperature correlation calibration is performed in a flat phantom filled with the appropriate simulated head tissue. The E-field in the medium correlates with the temperature rise in the dielectric medium. For temperature correlation calibration a RF transparent thermistor-based temperature probe is used in conjunction with the E-field probe.

$$SAR = C \frac{\Delta T}{\Delta t}$$

Where:

Δt = exposure time (30 seconds),

C = heat capacity of tissue (brain or muscle),

ΔT = temperature increase due to RF exposure.

SAR is proportional to $\Delta T/\Delta t$, the initial rate of tissue heating, before thermal diffusion takes place. The electric field in the simulated tissue can be used to estimate SAR by equating the thermally derived SAR to that with the E- field component.

$$SAR = \frac{|E|^2 \cdot \sigma}{\rho}$$

Where:

σ = simulated tissue conductivity,

ρ = Tissue density (1.25 g/cm³ for brain tissue)

4.4 Phantom

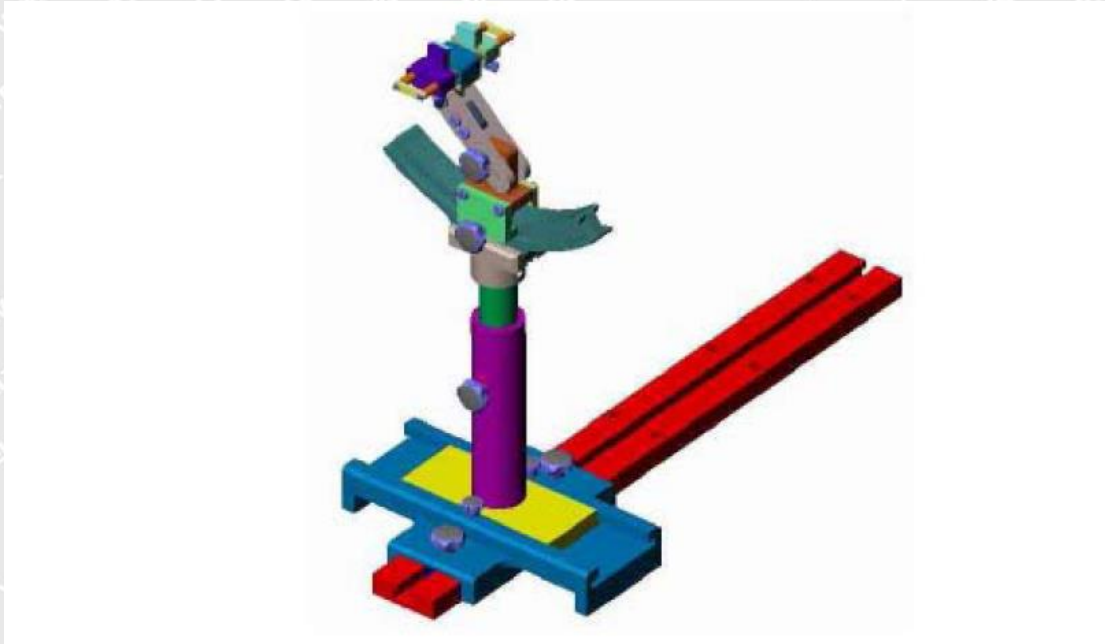
For the measurements the Specific Anthropomorphic Mannequin (SAM) defined by the IEEE SCC-34/SC2 group is used. The phantom is a polyurethane shell integrated in a wooden table. The thickness of the phantom amounts to 2mm +/- 0.2mm. It enables the dosimetric evaluation of left and right phone usage and includes an additional flat phantom part for the simplified performance check. The phantom set-up includes a



cover, which prevents the evaporation of the liquid.

4.5 Device Holder

The positioning system allows obtaining cheek and tilting position with a very good accuracy. In compliance with CENELEC, the tilt angle uncertainty is lower than 1°.



System Material	Permittivity	Loss Tangent
Delrin	3.7	0.005



4.6 Test Equipment List

Description	Manufacturer	Model	Serial Number	Cal. Date	Due. Date
E-Field Probe	MVG	SSE2	SN 18/21 EPGO356	2022-07-08	2023-07-07
750MHz Dipole	MVG	SID750	SN 47/12 DIP	2020-03-11	2023-03-10
835MHz Dipole	MVG	SID835	SN 47/12 DIP	2020-03-11	2023-03-10
900MHz Dipole	MVG	SID900	SN 47/12 DIP	2020-03-11	2023-03-10
1800MHz Dipole	MVG	SID1800	SN 47/12 DIP	2020-03-11	2023-03-10
1900MHz Dipole	MVG	SID1900	SN 47/12 DIP	2020-03-11	2023-03-10
2000MHz Dipole	MVG	SID2000	SN 47/12 DIP	2020-03-11	2023-03-10
2450MHz Dipole	MVG	SID2450	SN 13/15 DIP	2020-03-11	2023-03-10
5 GHz Dipole	MVG	SWG5500	SN 49/16 WGA45	2020-07-03	2023-07-02
Dielectric Probe	SATIMO	SCLMP	SN 47/12 OCPG49	2022-03-22	2023-03-21
SAM Phantom	SATIMO	SAM	SN/ 47/12 SAM95	N/A	N/A
Multi Meter	Keithley	Keithley 2000	4006367	2022-03-22	2023-03-21
Power meter	Keithley	3500	JC-2017-09-001	2022-03-22	2023-03-21
Power meter	Keithley	3500	JC-2017-09-001	2022-03-22	2023-03-21
Power Sensor	HP	11636B	JC-2017-10-002	2022-03-22	2023-03-21
MXG X-Series RF Vector Signal Generato	KEYSIGHT	N5182B	MY57300664	2022-03-22	2023-03-21
Universal Tester	Rohde & Schwarz	CMU200	112315	2022-03-22	2023-03-21
Universal Radio Communication Tester	Rohde & Schwarz	CMW500	148650	2022-03-22	2023-03-21
Network Analyzer	HP	8753C	2901A00831	2022-03-22	2023-03-21



5. Tissue Simulating Liquids

5.1 Composition of Tissue Simulating Liquid

For the measurement of the field distribution inside the SAM phantom with SMTIMO, the phantom must be filled with around 25 liters of homogeneous body tissue simulating liquid. For head SAR testing, the liquid height from the ear reference point (ERP) of the phantom to the liquid top surface is larger than 15 cm. For body SAR testing, the liquid height from the center of the flat phantom to the liquid top surface is larger than 15 cm. Please see the following photos for the liquid height.



Liquid Height for Body SAR

The Composition of Tissue Simulating Liquid

Frequency (MHz)	Water (%)	Salt (%)	Sugar (%)	HEC (%)	Preventol (%)	DGBE (%)
Body						
2450	68.6	0.1	0	0	0	31.3

Frequency (MHz)	Water (%)	Hexyl Carbitol (%)	Triton X-100 (%)
Body			
5200-5800	78.6	10.7	10.7



5.2 Tissue Dielectric Parameters for Head and Body Phantoms

According to FCC KDBs, IEEE 1528:2013 and CEI/IEC 62209 standards state that the system validation measurements must be performed using a reference dipole meeting the fore mentioned return loss and mechanical dimension requirements. The validation measurement must be performed against a liquid filled flat phantom, with the phantom constructed as outlined in the fore mentioned standards. Per the standards, the dipole shall be positioned below the bottom of the phantom, with the dipole length centered and parallel to the longest dimension of the flat phantom, with the top surface of the dipole at the described distance from the bottom surface of the phantom.

Target Frequency (MHz)	Head		Body	
	Conductivity (σ)	Permittivity (ϵ_r)	Conductivity (σ)	Permittivity (ϵ_r)
150	0.76	52.3	0.80	61.9
300	0.87	45.3	0.92	58.2
450	0.87	43.5	0.94	56.7
750	0.89	41.9	0.96	55.5
835	0.90	41.5	0.97	55.2
900	0.97	41.5	1.05	55.0
915	0.98	41.5	1.06	55.0
1450	1.20	40.5	1.30	54.0
1610	1.29	40.3	1.40	53.8
1800-2000	1.40	40.0	1.52	53.3
2300	1.67	39.5	1.81	52.9
2450	1.80	39.2	1.95	52.7
2600	1.96	39.0	2.16	52.5
3000	2.40	38.5	2.73	52.0
5200	4.66	36.0	5.30	49.0
5400	4.86	35.8	5.53	48.7
5600	5.07	35.5	5.77	48.5
5800	5.27	35.3	6.00	48.2



5.3 Tissue Calibration Result

The dielectric parameters of the liquids were verified prior to the SAR evaluation using COMOSAR Dielectric Probe Kit and an Agilent Network Analyzer.

Calibration Result for Dielectric Parameters of Tissue Simulating Liquid

Body Tissue Simulating Liquid									
Freq. MHz.	Temp. (°C)	Conductivity			Permittivity			Limit (%)	Date
		Reading (σ)	Target (σ)	Delta (%)	Reading (ϵ_r)	Target (ϵ_r)	Delta (%)		
2450	22.2	1.96	1.95	0.51	51.38	52.7	-2.50	±5	2023-01-06
5200	22.5	5.33	5.30	0.57	50.18	49.0	2.41	±5	2023-01-09
5800	22.5	6.15	6.00	2.50	49.34	48.2	2.37	±5	2023-01-09
2412	22.2	1.96	1.95	0.51	51.39	52.7	-2.49	±5	2023-01-06
2437	22.2	1.96	1.95	0.51	51.38	52.7	-2.50	±5	2023-01-06
2462	22.2	1.96	1.95	0.51	51.37	52.7	-2.52	±5	2023-01-06
2402	22.2	1.96	1.95	0.51	51.39	52.7	-2.49	±5	2023-01-06
2441	22.2	1.96	1.95	0.51	51.38	52.7	-2.50	±5	2023-01-06
2480	22.2	1.96	1.95	0.51	51.37	52.7	-2.52	±5	2023-01-06
5180	22.5	5.34	5.30	0.75	50.18	49.0	2.41	±5	2023-01-09
5240	22.5	5.34	5.30	0.75	50.17	49.0	2.39	±5	2023-01-09
5745	22.5	6.16	6.00	2.67	49.33	48.2	2.34	±5	2023-01-09
5785	22.5	6.16	6.00	2.67	49.33	48.2	2.34	±5	2023-01-09
5825	22.5	6.15	6.00	2.50	49.34	48.2	2.37	±5	2023-01-09



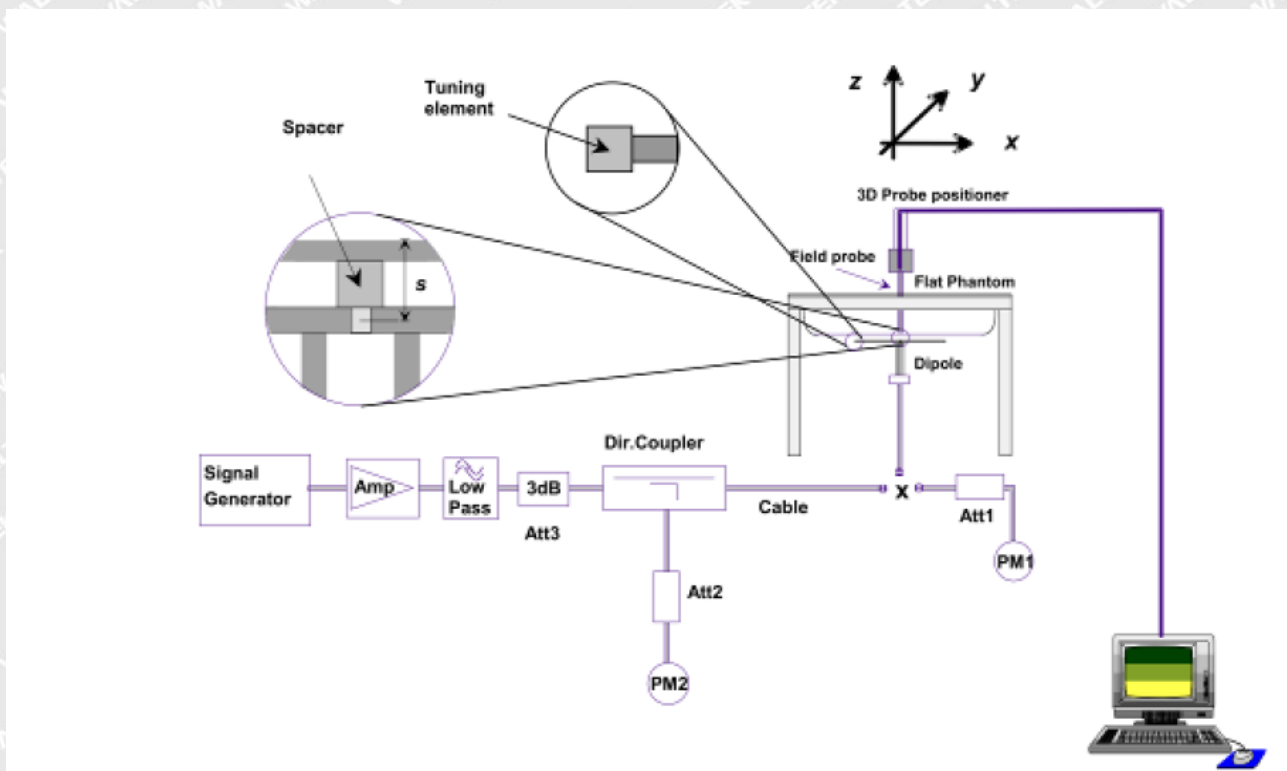
6. SAR Measurement Evaluation

6.1 Purpose of System Performance Check

The system performance check verifies that the system operates within its specifications. System and operator errors can be detected and corrected. It is recommended that the system performance check be performed prior to any usage of the system in order to guarantee reproducible results. The system performance check uses normal SAR measurements in a simplified setup with a well characterized source. This setup was selected to give a high sensitivity to all parameters that might fail or vary over time. The system check does not intend to replace the calibration of the components, but indicates situations where the system uncertainty is exceeded due to drift or failure.

6.2 System Setup

In the simplified setup for system evaluation, the EUT is replaced by a calibrated dipole and the power source is replaced by a continuous wave which comes from a signal generator at frequency 2450MHz and 5000MHz. The calibrated dipole must be placed beneath the flat phantom section of the SAM twin phantom with the correct distance holder. The distance holder should touch the phantom surface with a light pressure at the reference marking and be oriented parallel to the long side of the phantom.



System Verification Setup Block Diagram



Setup Photo of Dipole Antenna

The output power on dipole port must be calibrated to 24 dBm(250 mW) before dipole is connected.
 The output power on 5 GHz Waveguide must be calibrated to 20 dBm (100mW) before 5 GHz Waveguide is connected.

6.3 Validation Results

Comparing to the original SAR value provided by SATIMO, the validation data should be within its specification of 10 %. Table 6.1 shows the target SAR and measured SAR after normalized to 1W input power. The table below indicates the system performance check can meet the variation criterion.

Frequency	Targeted SAR _{1g}	Measured SAR _{1g}	Normalized SAR _{1g}	Tolerance	Date
MHz	(W/kg)	(W/kg)	(W/kg)	(%)	
Body					
2450	50.33	12.59	50.36	0.06	2023-01-06
5200	154.45	15.681	156.81	1.53	2023-01-09
5800	170.71	17.110	171.10	0.23	2023-01-09

Targeted and Measurement SAR

Please refer to Annex A for the plots of system performance check.



7. EUT Testing Position

7.1 Body Position

- (a) To position the device parallel to the phantom surface with each side.
- (b) To adjust the device parallel to the flat phantom.
- (c) To adjust the distance between the device surface and the flat phantom to 0mm.

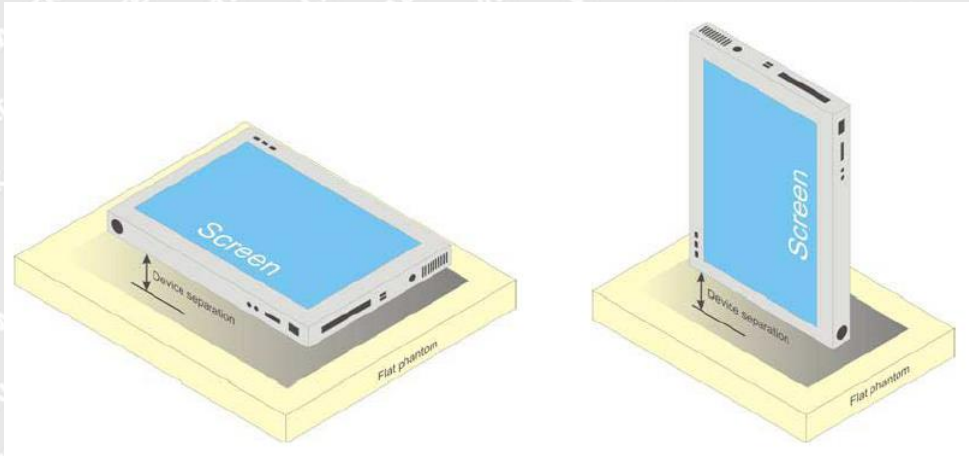


Illustration for Body Position

7.2 EUT Antenna Position

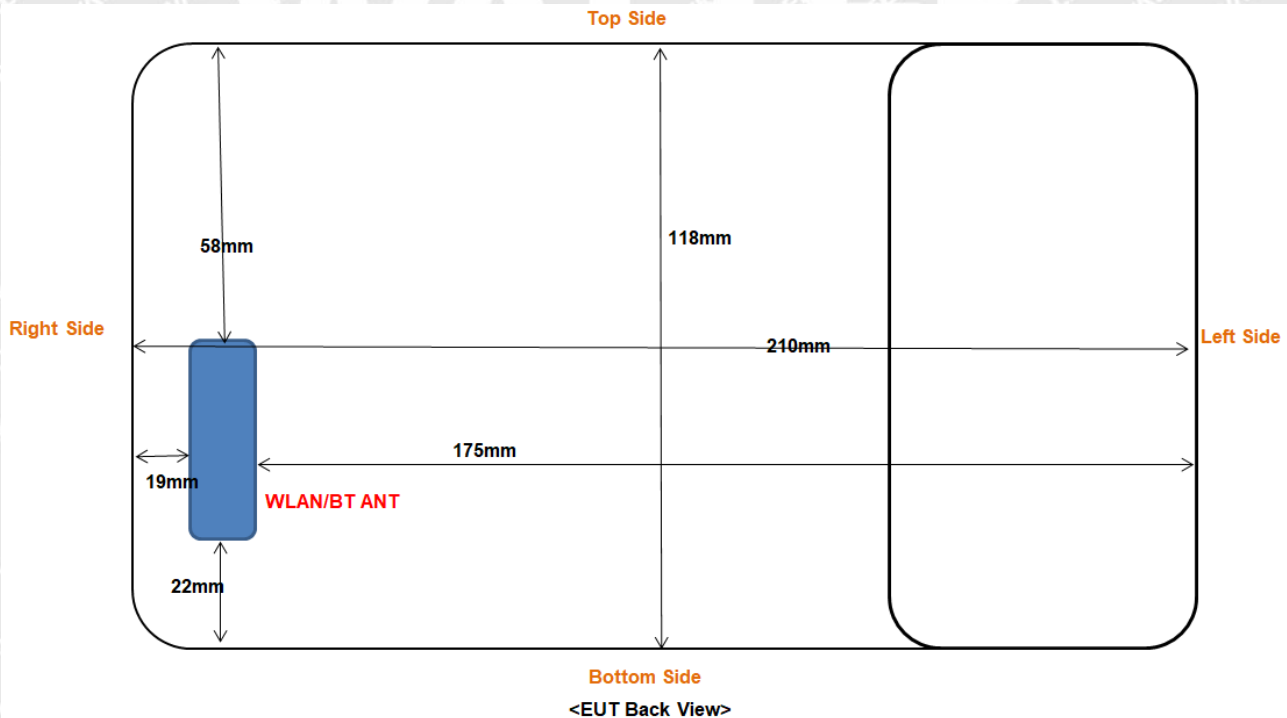


Fig 7.2 Block Diagram for EUT Antenna Position



Distance of EUT antenna-to-edge/surface(mm), Test distance:0mm						
Antennas	Back side	Front side	Left Edge	Right Edge	Top Edge	Bottom Edge
WLAN/BT	<25	<25	175	<25	58	<25

7.3 EUT Testing Position

Body mode SAR assessments are required for this device. This EUT was tested in different positions for different SAR test modes, more information as below:

Body SAR tests, Test distance: 0mm						
Antennas	Back	Front	Left Side	Right Side	Top Side	Bottom Side
WLAN/BT	Yes	Yes	No	Yes	No	Yes

Remark:

- Referring to KDB 616217 D04 v01r02, KDB 248227 D01 v02r02 and KDB 447498 D01 v06, this device is overall diagonal dimension(>20cm) tablet, tested in direct contact (no gap) with flat phantom.
- Referring to KDB 648474 D04 Handset SAR v01r03, when hotspot mode applies, 10-g extremity SAR is required only for the surfaces and edges with hotspot mode 1-g reported SAR > 1.2 W/kg.
- Referring to KDB 648474 D04 Handset SAR v01r03, and KDB 616217 D04 v01r02, when the overall diagonal dimension of the device is > 20.0 cm, Hotspot mode SAR is not required when normal tablet procedures are applied. Extremity 10-g SAR is also not required for the front (top) surface of larger form factor full size tablets. The more conservative normal tablet SAR results can be used to support tablet mode 10-g extremity SAR.

Please refer to Annex D for the EUT test setup photos.



8. SAR Measurement Procedures

8.1 Measurement Procedures

The measurement procedures are as follows:

- (a) Use base station simulator (if applicable) or engineering software to transmit RF power continuously (continuous Tx) in the highest power channel.
- (b) Keep EUT to radiate maximum output power or 100% factor (if applicable)
- (c) Measure output power through RF cable and power meter.
- (d) Place the EUT in the positions as Annex D demonstrates.
- (e) Set scan area, grid size and other setting on the SATIMO software.
- (f) Measure SAR results for the highest power channel on each testing position.
- (g) Find out the largest SAR result on these testing positions of each band
- (h) Measure SAR results for other channels in worst SAR testing position if the SAR of highest power channel is larger than 0.8 W/kg

According to the test standard, the recommended procedure for assessing the peak spatial-average SAR value consists of the following steps:

- (a) Power reference measurement
- (b) Area scan
- (c) Zoom scan
- (d) Power drift measurement

8.2 Spatial Peak SAR Evaluation

The procedure for spatial peak SAR evaluation has been implemented according to the test standard. It can be conducted for 1g and 10g, as well as for user-specific masses. The SATIMO software includes all numerical procedures necessary to evaluate the spatial peak SAR value.

The base for the evaluation is a "cube" measurement. The measured volume must include the 1g and 10g cubes with the highest averaged SAR values. For that purpose, the center of the measured volume is aligned to the interpolated peak SAR value of a previously performed area scan.

The entire evaluation of the spatial peak values is performed within the post-processing engine. The system always gives the maximum values for the 1g and 10g cubes. The algorithm to find the cube with highest averaged SAR is divided into the following stages:

- (a) Extraction of the measured data (grid and values) from the Zoom Scan
- (b) Calculation of the SAR value at every measurement point based on all stored data
- (c) Generation of a high-resolution mesh within the measured volume
- (d) Interpolation of all measured values from the measurement grid to the high-resolution grid
- (e) Extrapolation of the entire 3D field distribution to the phantom surface over the distance from sensor to surface
- (f) Calculation of the averaged SAR within masses of 1g and 10g



8.3 Area & Zoom Scan Procedures

First Area Scan is used to locate the approximate location(s) of the local peak SAR value(s). The measurement grid within an Area Scan is defined by the grid extent, grid step size and grid offset. Next, in order to determine the EM field distribution in a three-dimensional spatial extension, Zoom Scan is required. The Zoom Scan measures 5x5x7 points with step size 8, 8 and 5 mm for 300 MHz to 3 GHz, and 8x8x8 points with step size 4, 4 and 2.5 mm for 3 GHz to 6 GHz. The Zoom Scan is performed around the highest E-field value to determine the averaged SAR-distribution over 10 g.

8.4 Volume Scan Procedures

The volume scan is used for assess overlapping SAR distributions for antennas transmitting in different frequency bands. It is equivalent to an oversized zoom scan used in standalone measurements. The measurement volume will be used to enclose all the simultaneous transmitting antennas. For antennas transmitting simultaneously in different frequency bands, the volume scan is measured separately in each frequency band. In order to sum correctly to compute the 1g aggregate SAR, the EUT remain in the same test position for all measurements and all volume scan use the same spatial resolution and grid spacing (step-size is 4, 4 and 2.5 mm). When all volume scan were completed, the software can combine and subsequently superpose these measurement data to calculating the multiband SAR.

8.5 SAR Averaged Methods

The local SAR inside the phantom is measured using small dipole sensing elements inside a probe body. The probe tip must not be in contact with the phantom surface in order to minimize measurements errors, but the highest local SAR will occur at the surface of the phantom.

An extrapolation is using to determinate this highest local SAR values. The extrapolation is based on a fourth-order least-square polynomial fit of measured data. The local SAR value is then extrapolated from the liquid surface with a 1mm step.

The measurements have to be performed over a limited time (due to the duration of the battery) so the step of measurement is high. It could vary between 5 and 8 mm. To obtain an accurate assessment of the maximum SAR averaged over 10g and 1 g requires a very fine resolution in the three dimensional scanned data array.

8.6 Power Drift Monitoring

All SAR testing is under the EUT install full charged battery and transmit maximum output power. In SATIMO measurement software, the power reference measurement and power drift measurement procedures are used for monitoring the power drift of EUT during SAR test. Both these procedures measure the field at a specified reference position before and after the SAR testing. The software will calculate the field difference in dB. If the power drift more than 5%, the SAR will be retested.



9. SAR Test Result

9.1 Conducted RF Output Power

WLAN(2.4GHz) – Conducted Power					
Test Mode	Data Rate	Channel	Frequency (MHz)	Average Power (dBm)	Tune-up power (dBm)
802.11b	1Mbps	CH 01	2412	20.22	20.5
		CH 06	2437	20.17	20.5
		CH 11	2462	20.05	20.5
802.11g	6Mbps	CH 01	2412	18.73	19.0
		CH 06	2437	18.76	19.0
		CH 11	2462	18.80	19.0
802.11n (20MHz)	MCS0	CH 01	2412	18.05	18.5
		CH 06	2437	18.04	18.5
		CH 11	2462	17.91	18.5
802.11n (40MHz)	MCS0	CH 03	2422	16.65	17.0
		CH 06	2437	16.73	17.0
		CH 09	2452	16.48	17.0

U-NII-1– Conducted Power				
Test Mode	Channel	Frequency (MHz)	Average Power (dBm)	Tune-up power (dBm)
802.11n (HT20)	CH 36	5180	8.58	9.0
	CH 40	5200	8.30	8.5
	CH 48	5240	9.45	9.5
802.11n (HT40)	CH 38	5190	8.06	8.5
	CH 46	5230	8.52	9.0
802.11ac(VHT20)	CH 36	5180	8.65	9.0
	CH 40	5200	8.09	8.5
	CH 48	5240	9.39	9.5
802.11ac (VHT40)	CH 38	5190	7.00	7.5
	CH 46	5230	7.71	8.0
802.11ac (VHT80)	CH 42	5210	6.23	6.5



U-NII-3 – Conducted Power				
Test Mode	Channel	Frequency (MHz)	Average Power (dBm)	Tune-up power (dBm)
802.11n (HT20)	CH 149	5745	5.08	5.5
	CH 157	5785	6.06	6.5
	CH 165	5825	7.01	7.5
802.11n (HT40)	CH 151	5755	4.54	5.0
	CH 159	5795	5.61	6.0
802.11ac(VHT20)	CH 149	5745	5.01	5.5
	CH 157	5785	5.90	6.0
	CH 165	5825	7.03	7.5
802.11ac (VHT40)	CH 151	5755	3.53	4.0
	CH 159	5795	4.69	5.0
802.11ac (VHT80)	CH 155	5775	3.24	3.5

Remark:

1. Per KDB 248227 D01 v02r02, For 802.11b DSSS SAR measurements, DSSS SAR procedure applies to fixed exposure test position and initial test position procedure applies to multiple exposure test positions.
2. Per KDB 248227 D01 v02r02, For 802.11b DSSS SAR measurements, when the reported SAR of the highest measured maximum output power channel (see 3.1) for the exposure configuration is ≤ 0.8 W/kg, no further SAR testing is required for 802.11b DSSS in that exposure configuration. When the reported SAR is > 0.8 W/kg, SAR is required for that exposure configuration using the next highest measured output power channel. When any reported SAR is > 1.2 W/kg, SAR is required for the third channel; i.e., all channels require testing.
3. For OFDM modes (802.11g/n), SAR is not required when the highest reported SAR for DSSS is adjusted by the ratio of OFDM to DSSS specified maximum output power and it is ≤ 1.2 W/kg.



Bluetooth- Maximum Average Power				
Test Mode	Data Rate	Channel	Average Power (dBm)	Tune-up power (dBm)
GFSK	1Mbps	CH 00	8.60	9.0
		CH 39	8.03	8.5
		CH 78	9.55	10.0
4* π 4DQPSK	2Mbps	CH 00	7.94	8.0
		CH 39	7.29	7.5
		CH 78	9.01	9.5
8DPSK	3Mbps	CH 00	7.86	9.0
		CH 39	7.18	7.5
		CH 78	8.96	9.0

Bluetooth - Maximum Average Power				
Test Mode	Data Rate	Channel	Frequency (MHz)	Average Power (dBm)
BLE	1Mbps	CH 00	2402	-4.21
		CH 19	2440	-3.64
		CH 39	2480	-2.5

Remark:

1. The WIFI/BT Output power are provided by the customer.



9.2 Test Results for Standalone SAR Test

Body SAR

WLAN 2.4GHz– Body SAR Test(0mm)									
Plot No.	Mode	Test Position Body	Frequency		Output Power (dBm)	Rated Limit (dBm)	Scaling Factor	SAR1g (W/kg)	Scaled SAR1g (W/kg)
			CH.	MHz					
	802.11b	Back Face	01	2412	20.22	20.5	1.067	0.525	0.560
	802.11b	Front Face	01	2412	20.22	20.5	1.067	1.277	1.362
	802.11b	Right Side	01	2412	20.22	20.5	1.067	0.436	0.465
	802.11b	Bottom Side	01	2412	20.22	20.5	1.067	0.521	0.556
	802.11b	Front Face	06	2437	20.17	20.5	1.079	1.236	1.334
1.	802.11b	Front Face	11	2462	20.05	20.5	1.109	1.262	1.400

Bluetooth–Body SAR Test(0mm)									
Plot No.	Mode	Test Position Body	Frequency		Output Power (dBm)	Rated Limit (dBm)	Scaling Factor	SAR1g (W/kg)	Scaled SAR1g (W/kg)
			CH.	MHz					
	BR/EDR	Back Face	78	2480	9.55	10.0	1.109	0.092	0.102
	BR/EDR	Front Face	78	2480	9.55	10.0	1.109	0.176	0.195
	BR/EDR	Right Side	78	2480	9.55	10.0	1.109	0.065	0.072
	BR/EDR	Bottom Side	78	2480	9.55	10.0	1.109	0.043	0.048
	BR/EDR	Front Face	00	2402	8.60	9.0	1.096	0.173	0.190
2.	BR/EDR	Front Face	39	2441	8.03	8.5	1.114	0.247	0.275

U-NII-1– Body SAR Test(0mm)									
Plot No.	Mode	Test Position Body	Frequency		Output Power (dBm)	Rated Limit (dBm)	Scaling Factor	SAR1g (W/kg)	Scaled SAR1g (W/kg)
			CH.	MHz					
	802.11ac(V HT20)	Back Side	48	5240	9.45	9.5	1.012	0.271	0.274
3.	802.11ac(V HT20)	Front Side	48	5240	9.45	9.5	1.012	1.033	1.045
	802.11ac(V HT20)	Right side	48	5240	9.45	9.5	1.012	0.435	0.440
	802.11ac(V HT20)	Bottom side	48	5240	9.45	9.5	1.012	0.338	0.342
	802.11ac(V HT20)	Front Side	36	5180	8.58	9.0	1.102	0.884	0.974
	802.11ac(V HT20)	Front Side	40	5200	8.30	8.5	1.047	0.918	0.961



U-NII-3- Body SAR Test(0mm)									
Plot No.	Mode	Test Position Body	Frequency		Output Power (dBm)	Rated Limit (dBm)	Scaling Factor	SAR1g (W/kg)	Scaled SAR1g (W/kg)
			CH.	MHz					
	802.11ac(V HT20)	Back Side	165	5825	7.03	7.5	1.114	0.152	0.169
	802.11ac(V HT20)	Front Side	165	5825	7.03	7.5	1.114	1.150	1.281
	802.11ac(V HT20)	Right side	165	5825	7.03	7.5	1.114	0.331	0.369
	802.11ac(V HT20)	Bottom side	165	5825	7.03	7.5	1.114	0.298	0.332
4.	802.11ac(V HT20)	Front Side	149	5745	5.01	5.5	1.119	1.334	1.493
	802.11ac(V HT20)	Front Side	157	5785	5.90	6.0	1.023	1.259	1.288

WALTEK

**Repeated SAR**

WLAN 2.4GHz– Body SAR Test(0mm)								
Mode	Test Position Body	Frequency		SAR1g (W/kg)	Repeated SAR		Ratio	
		CH.	MHz		1	2	1	2
802.11b	Front Face	01	2412	1.277	1.240	/	1.030	/
802.11b	Front Face	06	2437	1.236	1.141	/	1.083	/
802.11b	Front Face	11	2462	1.262	1.183	/	1.067	/

U-NII-1– Body SAR Test(0mm)								
Mode	Test Position Body	Frequency		SAR1g (W/kg)	Repeated SAR		Ratio	
		CH.	MHz		1	2	1	2
802.11ac(VHT20)	Front Side	48	5240	1.033	0.943	/	1.095	/
802.11ac(VHT20)	Front Side	36	5180	0.884	0.857	/	1.032	/
802.11ac(VHT20)	Front Side	40	5200	0.918	0.901	/	1.019	/

U-NII-3– Body SAR Test(0mm)								
Mode	Test Position Body	Frequency		SAR1g (W/kg)	Repeated SAR		Ratio	
		CH.	MHz		1	2	1	2
802.11n (HT20)	Front Side	165	5825	1.150	1.083	/	1.062	/
802.11n (HT20)	Front Side	149	5745	1.334	1.306	/	1.021	/
802.11n (HT20)	Front Side	157	5785	1.259	1.241	/	1.015	/

Remark:

- 1) Repeated measurement is not required when the original highest measured SAR is < 0.80 W/kg; steps 2) through 4) do not apply.
- 2) When the original highest measured SAR is ≥ 0.80 W/kg, repeat that measurement once.
- 3) Perform a second repeated measurement only if the ratio of largest to smallest SAR for the original and first repeated measurements is > 1.20 or when the original or repeated measurement is ≥ 1.45 W/kg (~ 10% from the 1-g SAR limit).
- 4) Perform a third repeated measurement only if the original, first or second repeated measurement is ≥ 1.5 W/kg and the ratio of largest to smallest SAR for the original, first and second repeated measurements is > 1.20.



10. Measurement Uncertainty

10.1 Uncertainty for SAR Test

a	b	c	d	e= f(d,k)	f	g	h= c*f/e	i= c*g/e	k
Uncertainty Component	Sec.	Tol (+- %)	Prob. Dist.	Div.	Ci (1g)	Ci (10g)	1g Ui (+-%)	10g Ui (+-%)	Vi
Measurement System									
Probe calibration	E.2.1	7.0	N		1	1	7.00	7.00	
Axial Isotropy	E.2.2	2.5	R		(1_Cp)^1/	(1_Cp)^1/2	1.02	1.02	
Hemispherical Isotropy	E.2.2	4.0	R		(Cp)^1/2	(Cp)^1/2	1.63	1.63	
Boundary effect	E.2.3	1.0	R		1	1	0.58	0.58	
Linearity	E.2.4	5.0	R		1	1	2.89	2.89	
System detection limits	E.2.5	1.0	R		1	1	0.58	0.58	
Readout Electronics	E.2.6	0.02	N		1	1	0.02	0.02	
Reponse Time	E.2.7	3.0	R		1	1	1.73	1.73	
Integration Time	E.2.8	2.0	R		1	1	1.15	1.15	
RF ambient Conditions -	E.6.1	0	R		1	1	1.73	1.73	
RF ambient Conditions - Reflections	E.6.1	0	R		1	1	1.73	1.73	
Probe positioner Mechanical Tolerance	E.6.2	2.0	R		1	1	1.15	1.15	
Probe positioning with respect to Phantom Shell	E.6.3	0.05	R		1	1	0.03	0.03	
Extrapolation, interpolation and integration Algorithms for Max. SAR Evaluation	E.5	5.0	R		1	1	2.89	2.89	
Test Sample Related									
Test sample positioning	E.4.2	0.03	N		1	1	0.03	0.03	
Device Holder Uncertainty	E.4.1	5.00	N		1	1	5.00	5.00	
Output power Variation - SAR drift measurement	E.2.9	12.02	R		1	1	6.94	6.94	
SAR scaling	E6.5	0.0	R		1	1	0.0	0.0	
Phantom and Tissue Parameters									
Phantom Uncertainty (Shape and thickness tolerances)	E.3.1	0.05	R		1	1	0.03	0.03	



Uncertainty in SAR correction for deviations in permittivity and conductivity	E3.2	1.9	R		1	0.84	1.10	0.90	
Liquid conductivity - deviation from target value	E.3.2	5.00	R		0.64	0.43	1.85	1.24	
Liquid conductivity - measurement uncertainty	E.3.3	5.00	N		0.64	0.43	3.20	2.15	
Liquid permittivity - deviation from target value	E.3.2	0.37	R		0.6	0.49	0.13	0.10	
Liquid permittivity - measurement uncertainty	E.3.3	10.00	N		0.6	0.49	6.00	4.90	
Combined Standard Uncertainty			RSS				10.20	10.00	
Expanded Uncertainty (95% Confidence interval)			K=2				20.40	20.00	

WALTEK



Annex A. Plots of System Performance Check

MEASUREMENT 1

Type: Validation measurement (Fast, 75.00 %)

Date of measurement: 2023-01-06

Measurement duration: 12 minutes 21 seconds

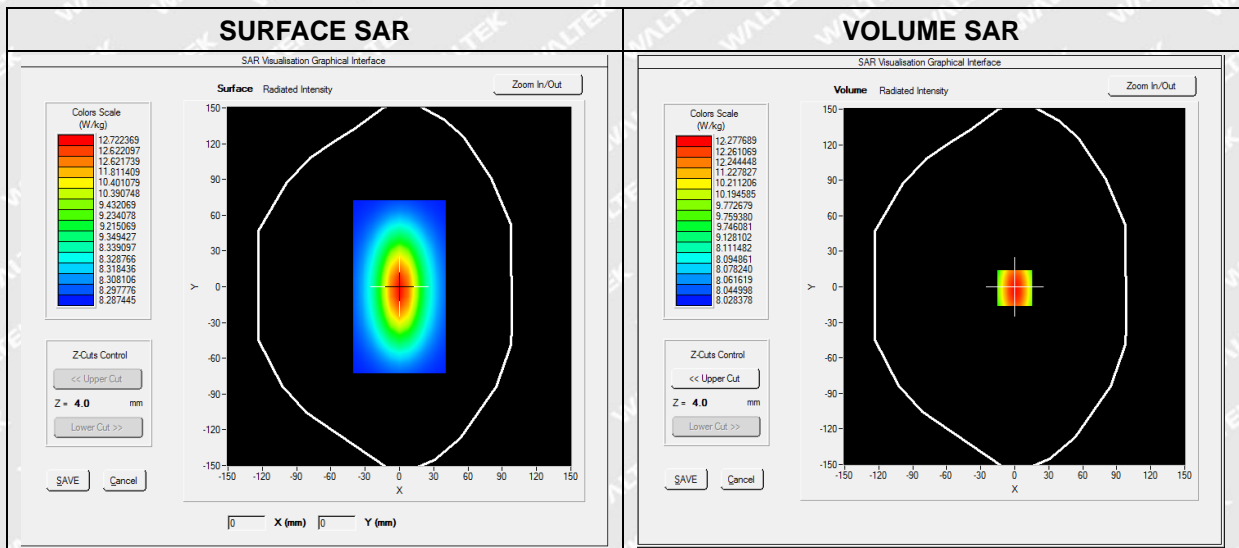
E-field Probe: SSE2 - SN 18/21 EPGO356; ConvF: 2.60; Calibrated: 2022-07-08

A. Experimental conditions

Area Scan	dx=8mm dy=8mm
Zoom Scan	dx=5mm dy=5mm dz=4mm
Phantom	Validation plane
Device Position	Dipole
Band	CW2450
Signal	Duty Cycle 1:1

B. SAR Measurement Results

Frequency (MHz)	2450.000000
Relative Permittivity (real part)	51.382128
Conductivity (S/m)	1.962557
Power Variation (%)	1.974500
Ambient Temperature	22.2
Liquid Temperature	22.2



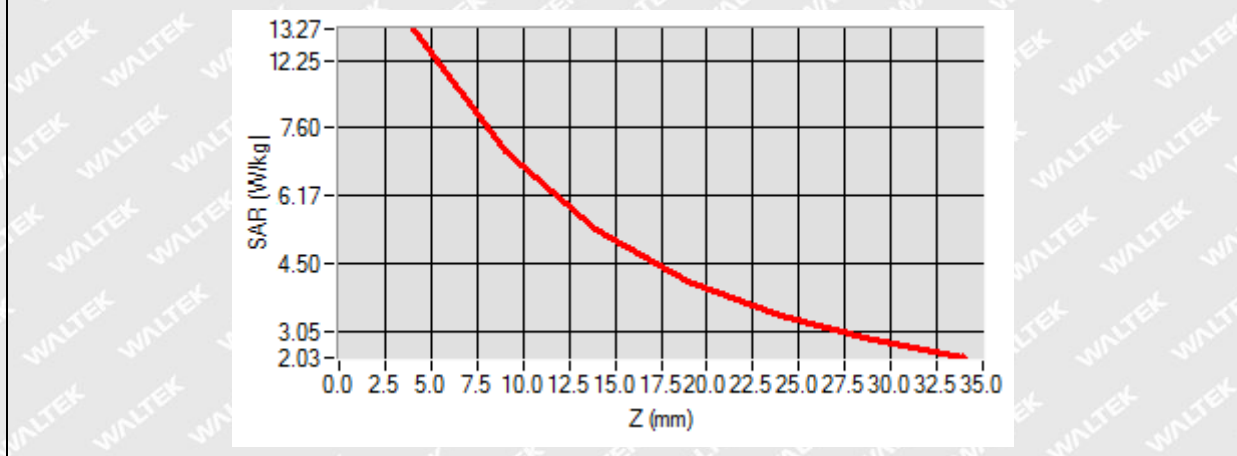


Maximum location: X=0.00, Y=0.00

SAR 10g (W/Kg)	6.119522
SAR 1g (W/Kg)	12.592360

Z Axis Scan

Z (mm)	0.00	4.00	9.00	14.00	19.00	24.00	29.00
SAR (W/Kg)	0.0000	13.1911	11.7951	9.2945	8.5400	6.3712	4.6225



3D screen shot	Hot spot position



MEASUREMENT 2

Type: Validation measurement (Fast, 75.00 %)

Date of measurement: 2023-01-09

Measurement duration: 12 minutes 21 seconds

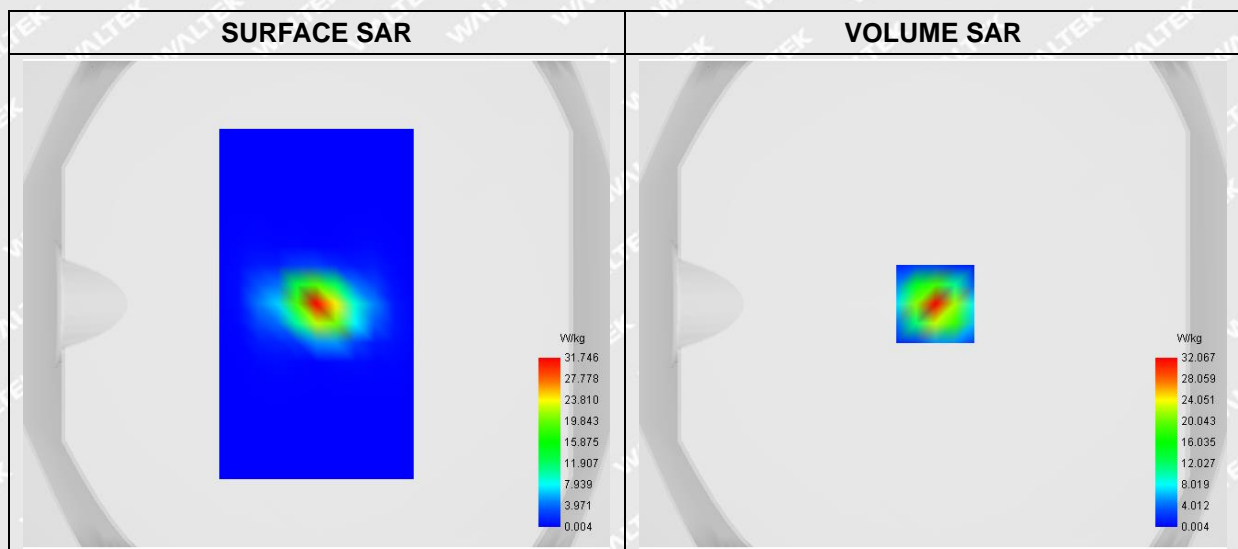
E-field Probe: SSE2 - SN 18/21 EPGO356; ConvF: 1.84; Calibrated: 2022-07-08

A. Experimental conditions

Area Scan	dx=8mm dy=8mm
Zoom Scan	dx=4mm dy=4mm dz=2mm
Phantom	Validation plane
Device Position	Dipole
Band	CW5200
Signal	Duty Cycle 1:1

B. SAR Measurement Results

Frequency (MHz)	5200.000000
Relative Permittivity (real part)	50.181241
Conductivity (S/m)	5.330213
Power Variation (%)	0.740100
Ambient Temperature	22.5
Liquid Temperature	22.5

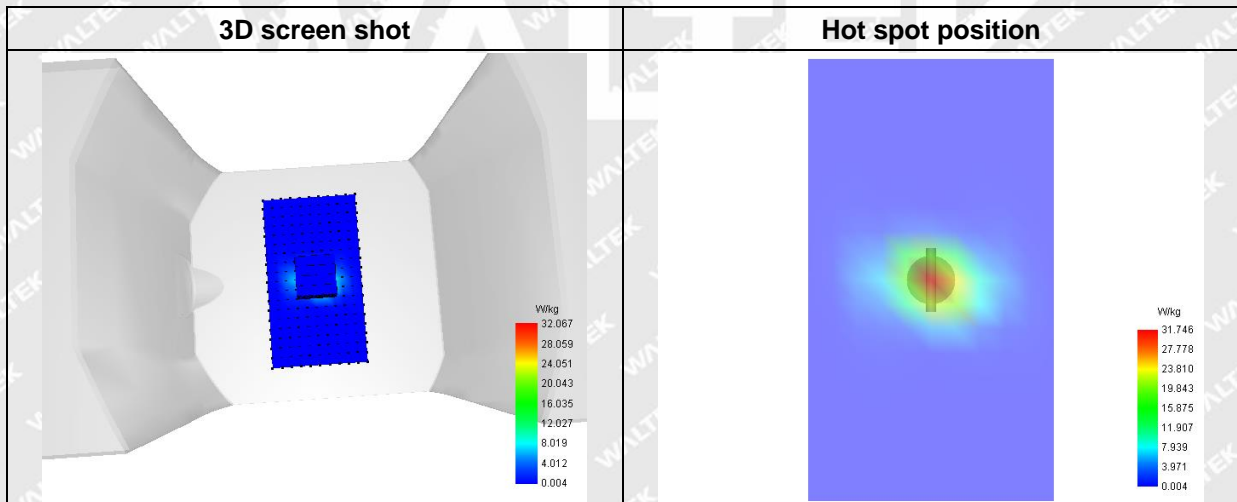
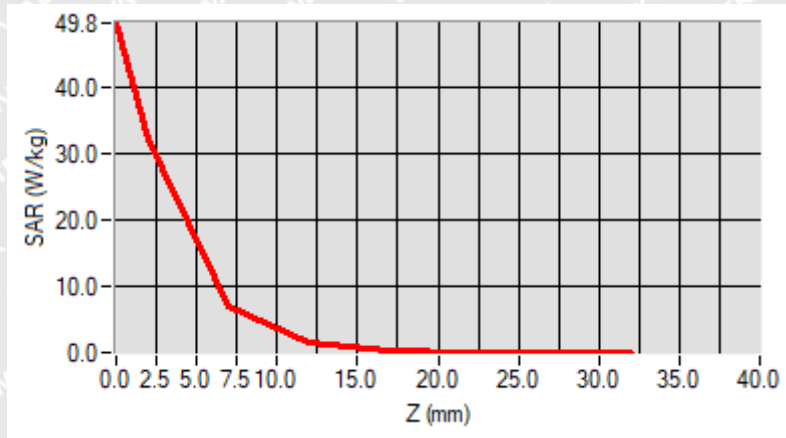




Maximum location: X=1.00, Y=0.00

SAR 10g (W/Kg)	5.347588
SAR 1g (W/Kg)	15.681175

Z (mm)	0.00	2.00	7.00	12.00	17.00	22.00	27.00
SAR (W/Kg)	49.8093	31.2669	6.5244	1.5169	0.3310	0.0535	0.0070





MEASUREMENT 3

Type: Validation measurement (Fast, 75.00 %)

Date of measurement: 2023-01-09

Measurement duration: 12 minutes 21 seconds

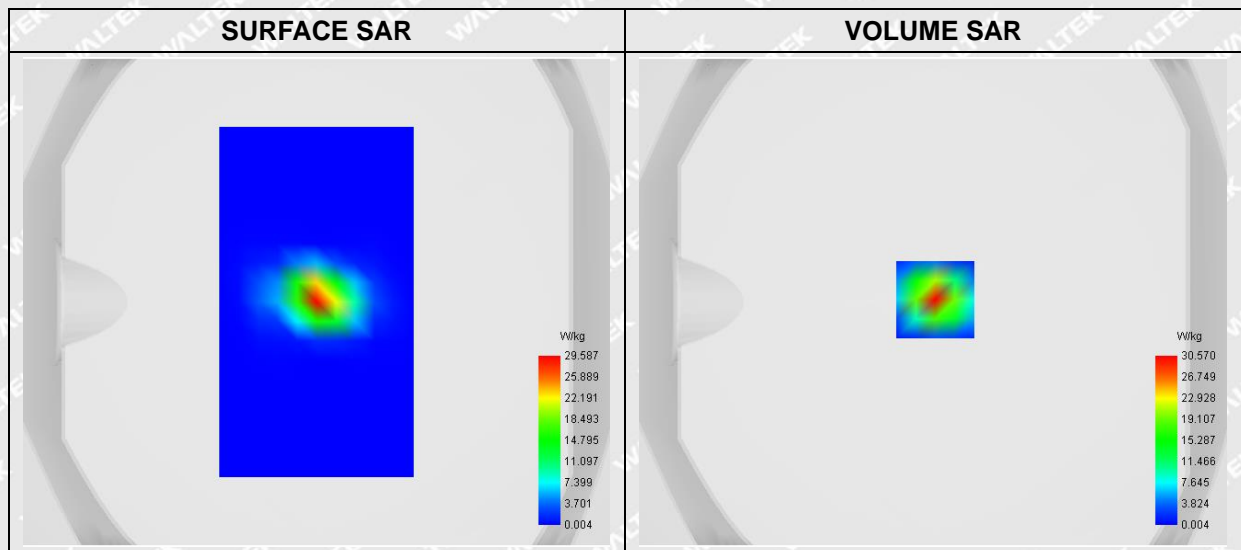
E-field Probe: SSE2 - SN 18/21 EPGO356; ConvF: 2.11; Calibrated: 2022-07-08

A. Experimental conditions

Area Scan	dx=8mm dy=8mm
Zoom Scan	dx=5mm dy=5mm dz=4mm
Phantom	Validation plane
Device Position	Dipole
Band	CW5800
Signal	CW (Crest factor: 1.0)

B. SAR Measurement Results

Frequency (MHz)	5800.000000
Relative Permittivity (real part)	49.343147
Conductivity (S/m)	6.153641
Power Variation (%)	1.390000
Ambient Temperature	22.5
Liquid Temperature	22.5

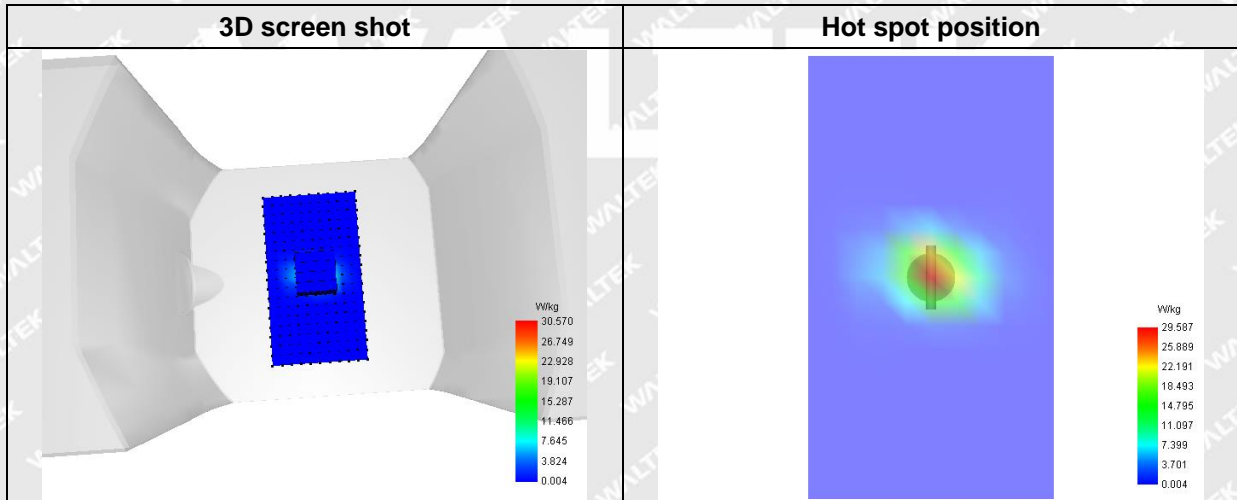
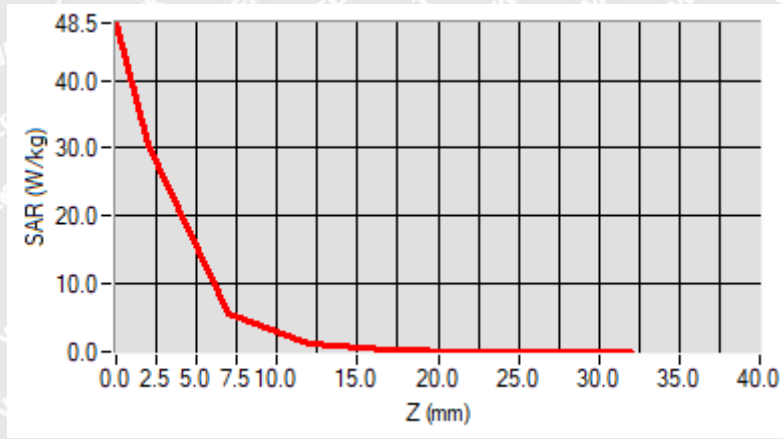


Maximum location: X=1.00, Y=1.00



SAR 10g (W/Kg)	5.912341
SAR 1g (W/Kg)	17.110732

Z (mm)	0.00	2.00	7.00	12.00	17.00	22.00	27.00
SAR (W/Kg)	48.4695	30.5699	5.7100	1.0698	0.1906	0.0364	0.0052





Annex B. Plots of SAR Measurement

MEASUREMENT 1

Type: Phone measurement (Complete)
 Date of measurement: 2023-01-06
 Measurement duration: 12 minutes 3 seconds

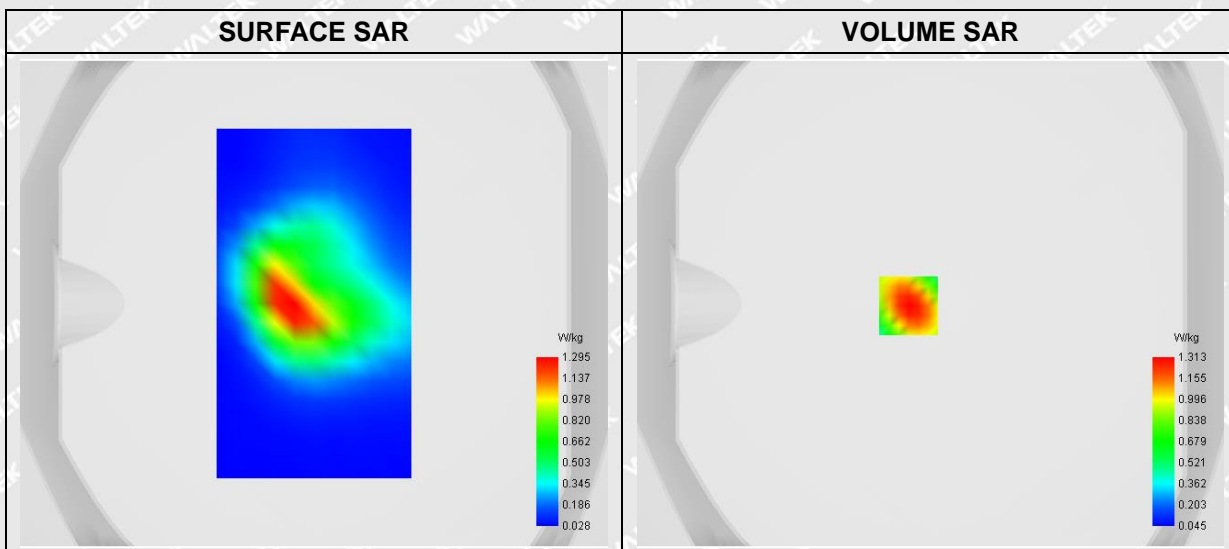
A. Experimental conditions

Area Scan	dx=8mm dy=8mm
Zoom Scan	dx=4mm dy=4mm dz=2mm
Phantom	Flat Plane
Device Position	Front
Band	WiFi_802.11b
Channels	High
Signal	Duty Cycle 1:1

B. SAR Measurement Results

Frequency (MHz)	2462.000000
Relative Permittivity (real part)	51.371058
Conductivity (S/m)	1.963036
Power Variation (%)	2.420000
Ambient Temperature	22.2
Liquid Temperature	22.2

C. SAR Surface and Volume





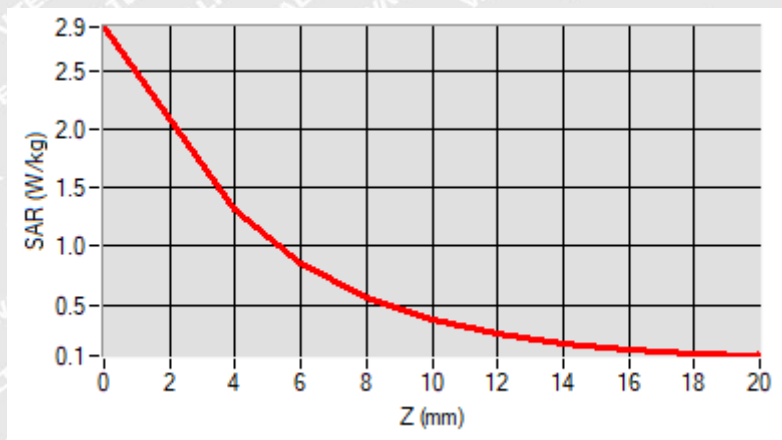
Maximum location: X=-9.00, Y=-1.00

D. SAR 1g & 10g

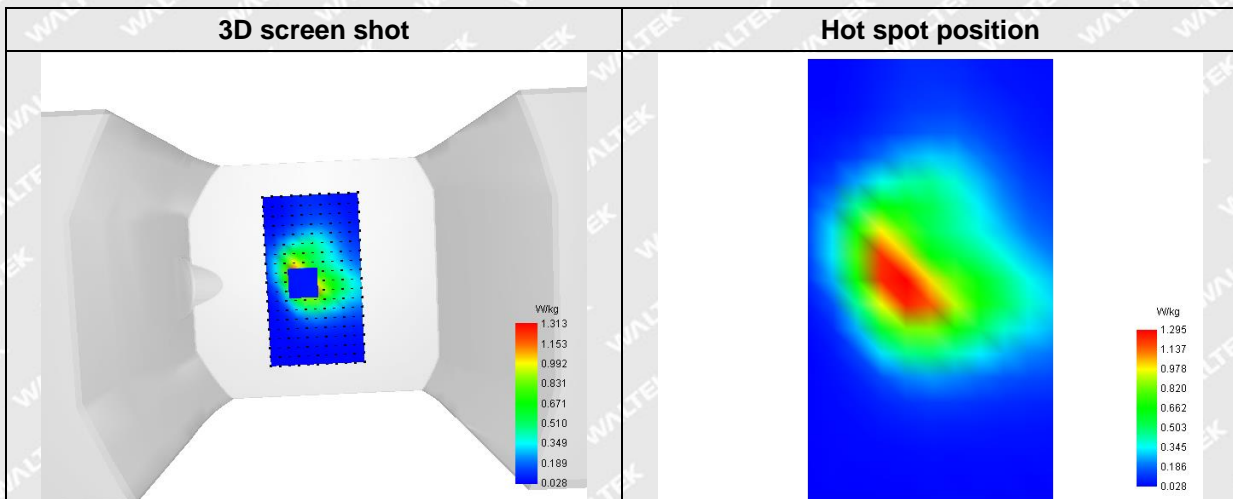
SAR 10g (W/Kg)	0.574067
SAR 1g (W/Kg)	1.261725

E. Z Axis Scan

Z (mm)	0.00	4.00	6.00	8.00	10.00	12.00	14.00	16.00	18.00
SAR (W/Kg)	2.8813	1.3134	0.8614	0.5581	0.3660	0.2454	0.1696	0.1209	0.0880



F. 3D Image





MEASUREMENT 2

Type: Phone measurement (Complete)

Date of measurement: 2023-01-06

Measurement duration: 12 minutes 3 seconds

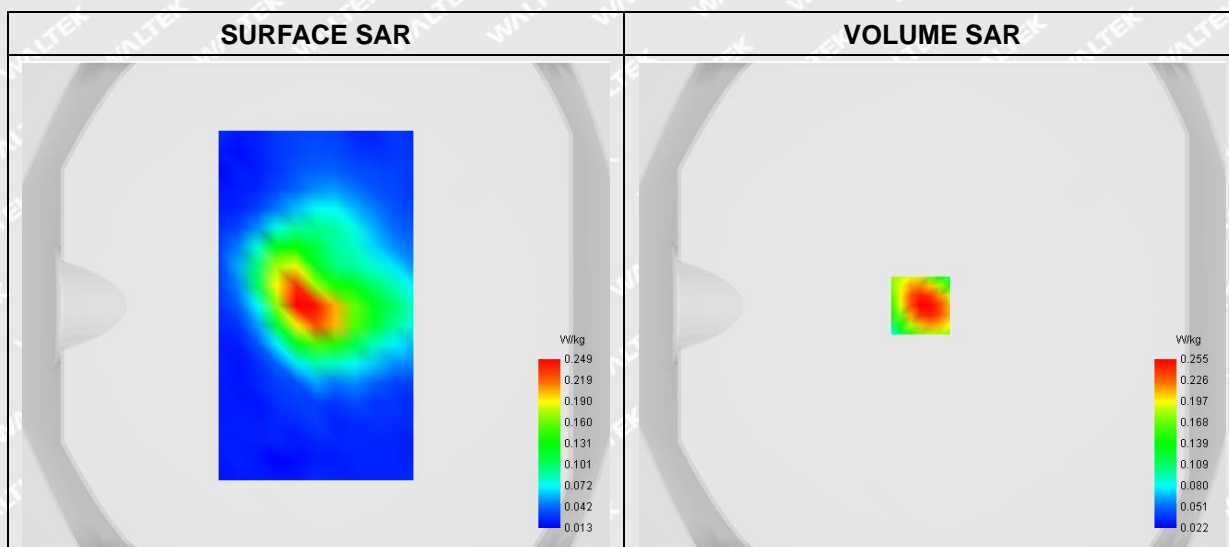
A. Experimental conditions

Area Scan	dx=8mm dy=8mm
Zoom Scan	dx=4mm dy=4mm dz=2mm
Phantom	Flat Plane
Device Position	Front
Band	Bluetooth_BR/EDR
Channels	Middle
Signal	Duty Cycle 1:1

B. SAR Measurement Results

Frequency (MHz)	2441.000000
Relative Permittivity (real part)	51.384088
Conductivity (S/m)	1.963084
Power Variation (%)	1.450000
Ambient Temperature	22.2
Liquid Temperature	22.2

C. SAR Surface and Volume



Maximum location: X=-5.00, Y=0.00

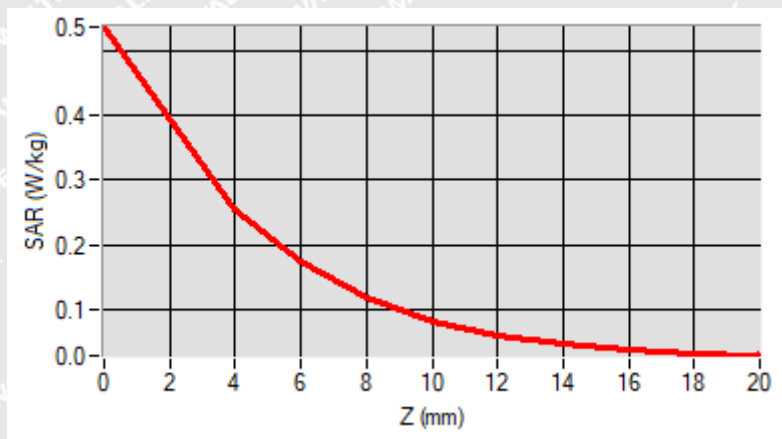


D. SAR 1g & 10g

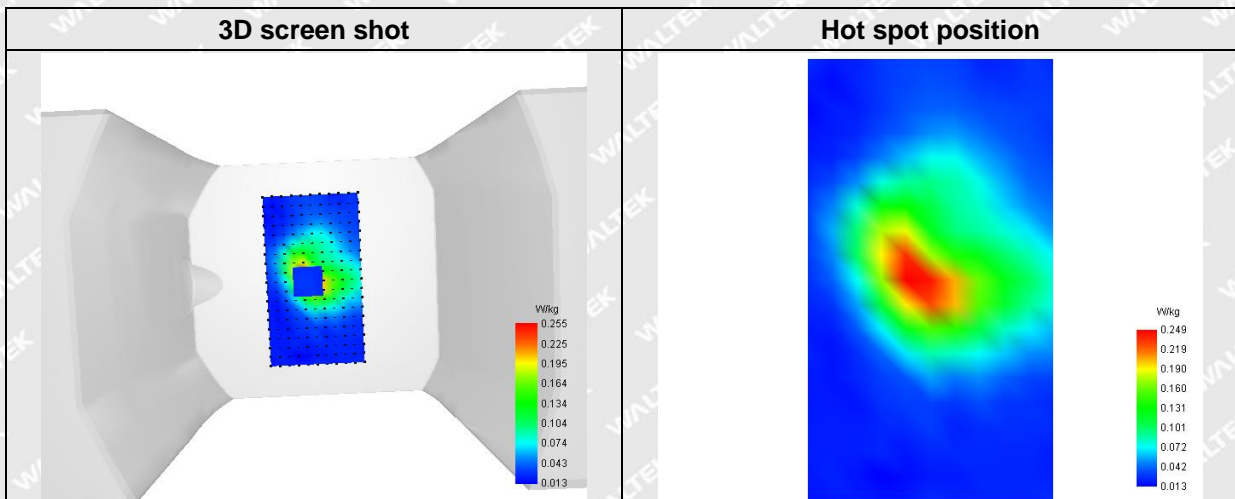
SAR 10g (W/Kg)	0.119793
SAR 1g (W/Kg)	0.247459

E. Z Axis Scan

Z (mm)	0.00	4.00	6.00	8.00	10.00	12.00	14.00	16.00	18.00
SAR (W/Kg)	0.5355	0.2552	0.1739	0.1191	0.0843	0.0626	0.0490	0.0404	0.0348



F. 3D Image





MEASUREMENT 3

Type: Phone measurement (Complete)
 Date of measurement: 2023-01-09
 Measurement duration: 12 minutes 3 seconds

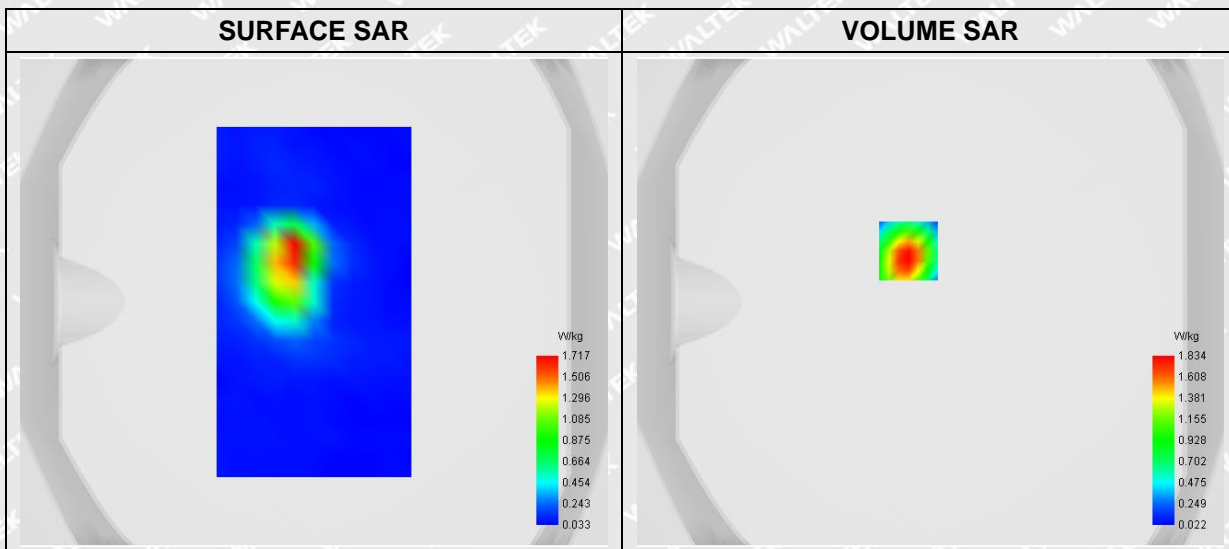
A. Experimental conditions

Area Scan	dx=8mm dy=8mm
Zoom Scan	dx=4mm dy=4mm dz=2mm
Phantom	Flat Plane
Device Position	Front
Band	U-NII-1_802.11ac(VHT20)
Channels	High
Signal	Duty Cycle: 1:1

B. SAR Measurement Results

Frequency (MHz)	5240.000000
Relative Permittivity (real part)	50.172118
Conductivity (S/m)	5.344838
Power Variation (%)	-1.760000
Ambient Temperature	22.5
Liquid Temperature	22.5

C. SAR Surface and Volume





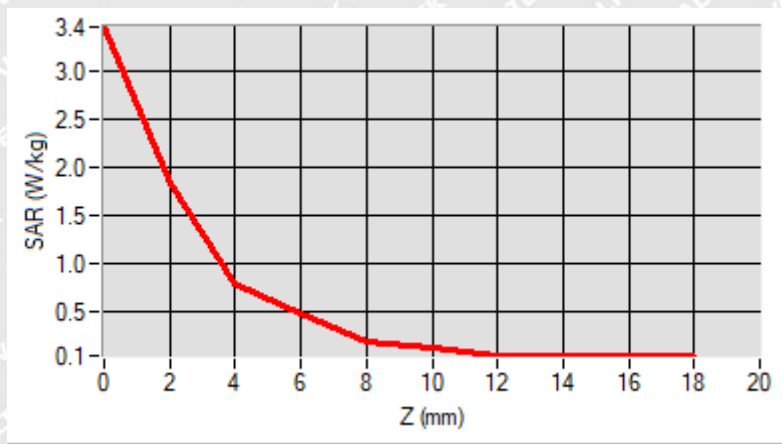
Maximum location: X=-9.00, Y=21.00

D. SAR 1g & 10g

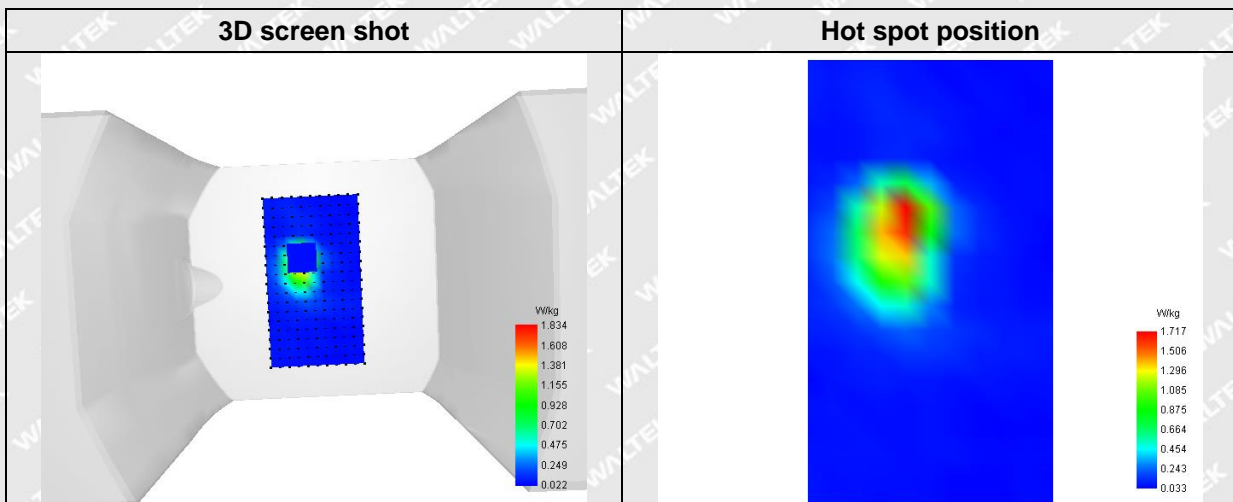
SAR 10g (W/Kg)	0.353168
SAR 1g (W/Kg)	1.032883

E. Z Axis Scan

Z (mm)	0.00	2.00	4.00	6.00	8.00	10.00	12.00	14.00	16.00
SAR (W/Kg)	3.4463	1.8342	0.7902	0.4960	0.1900	0.1330	0.0609	0.0597	0.0538



F. 3D Image





MEASUREMENT 4

Type: Phone measurement (Complete)
 Date of measurement: 2023-01-09
 Measurement duration: 12 minutes 3 seconds

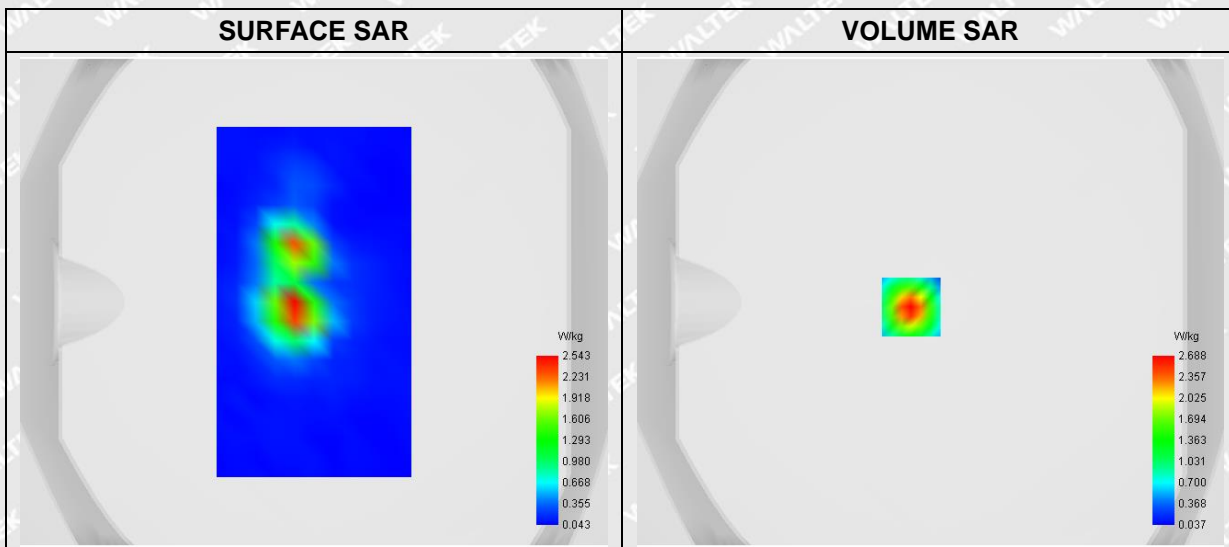
A. Experimental conditions

Area Scan	dx=8mm dy=8mm
Zoom Scan	dx=4mm dy=4mm dz=2mm
Phantom	Flat Plane
Device Position	Front
Band	U-NII-3_802.11ac(VHT20)
Channels	Low
Signal	Duty Cycle: 1:1

B. SAR Measurement Results

Frequency (MHz)	5745.000000
Relative Permittivity (real part)	49.333929
Conductivity (S/m)	6.162549
Power Variation (%)	1.512000
Ambient Temperature	22.5
Liquid Temperature	22.5

C. SAR Surface and Volume





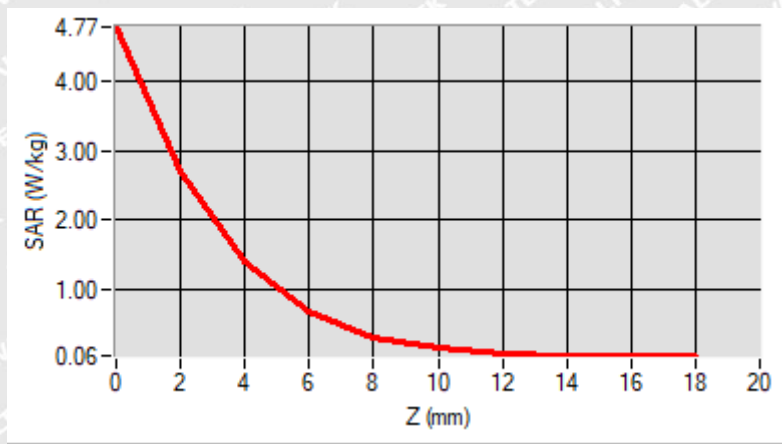
Maximum location: X=-8.00, Y=-2.00

D. SAR 1g & 10g

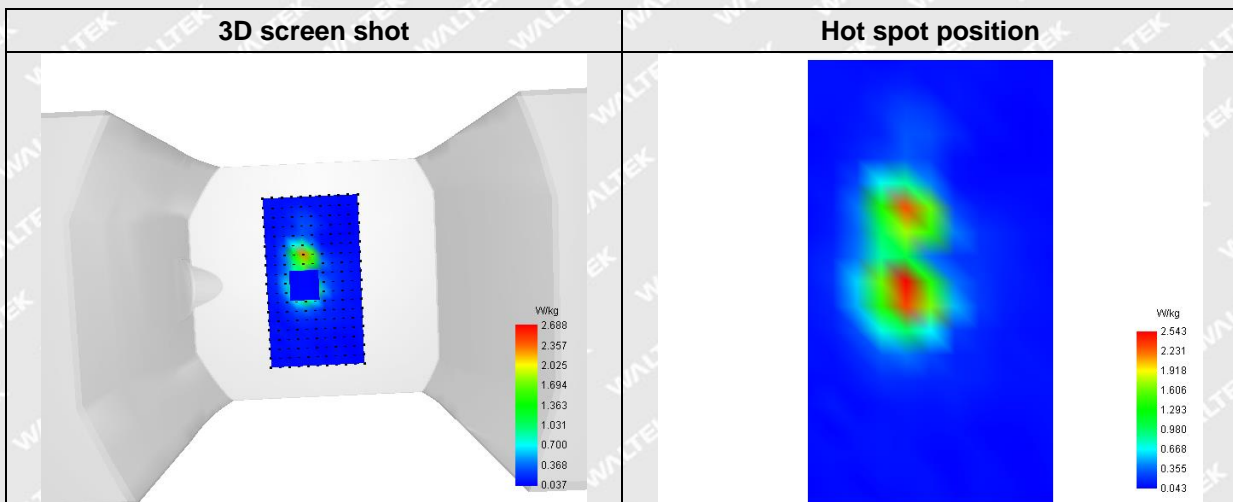
SAR 10g (W/Kg)	0.404621
SAR 1g (W/Kg)	1.333614

E. Z Axis Scan

Z (mm)	0.00	2.00	4.00	6.00	8.00	10.00	12.00	14.00	16.00	18.00
SAR (W/Kg)	4.7610	2.6580	1.3689	0.6591	0.3041	0.1509	0.0903	0.0640	0.0569	



F. 3D Image





EUT View 3



EUT View 4





EUT View 5



EUT View 6

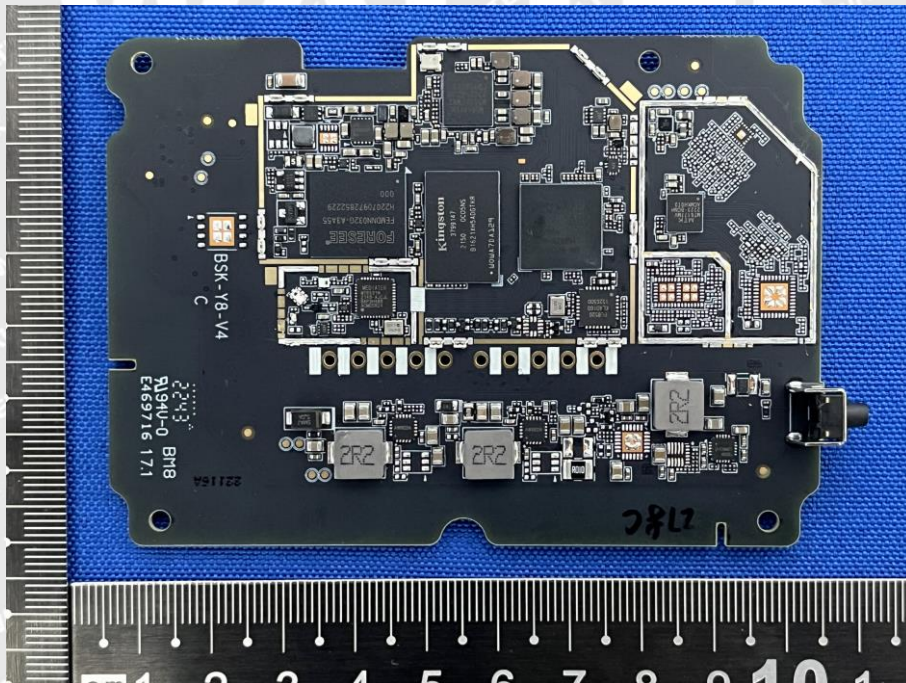




EUT Housing and Board View 1

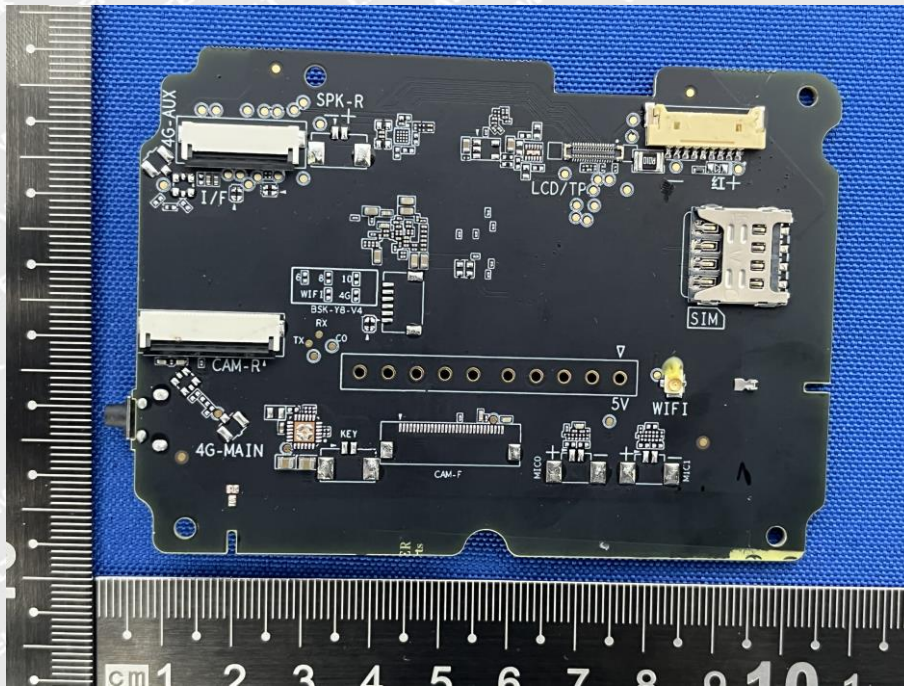


Solder Board-Component View 1

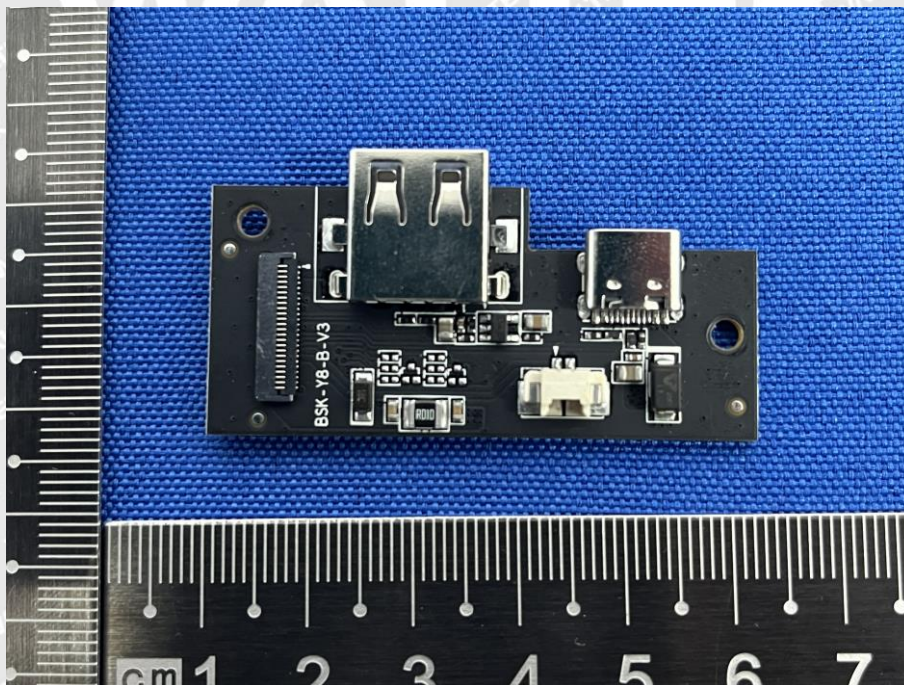




Solder Board-Component View 2

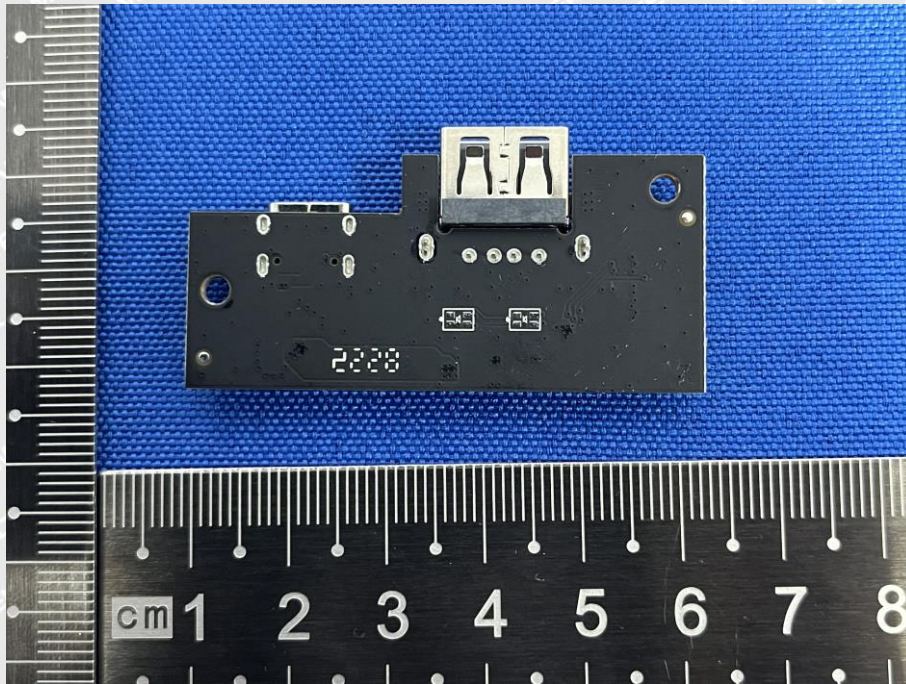


Solder Board-Component View 3

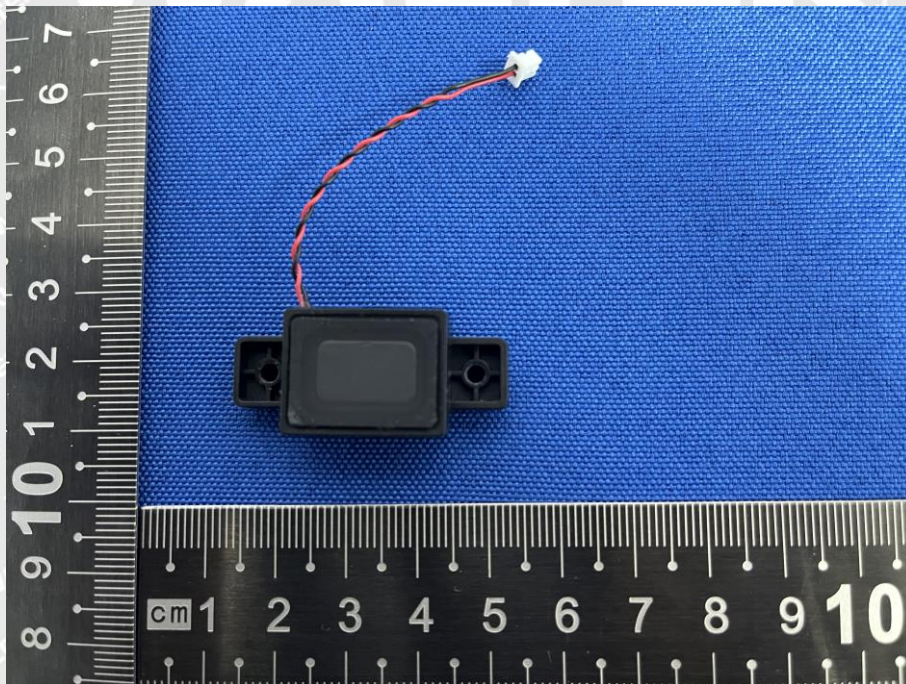




Solder Board-Component View 4

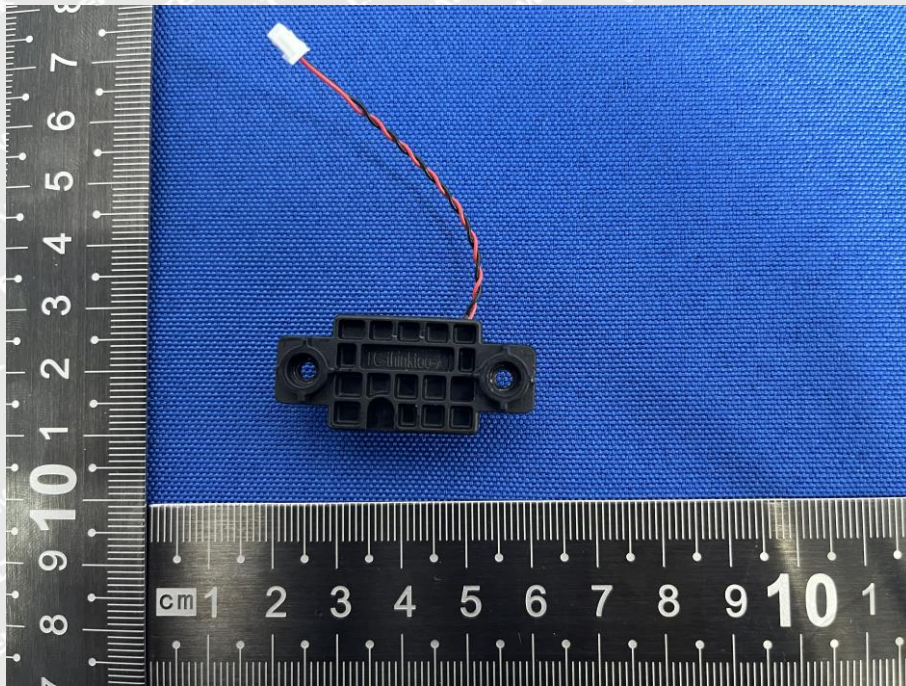


Solder Board-Component View 5

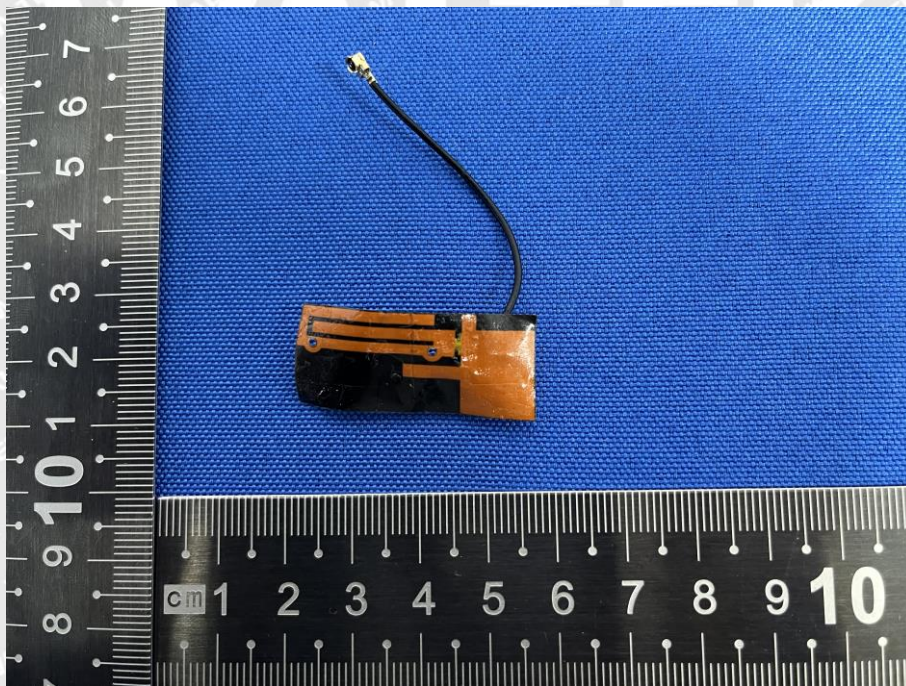




Solder Board-Component View 6

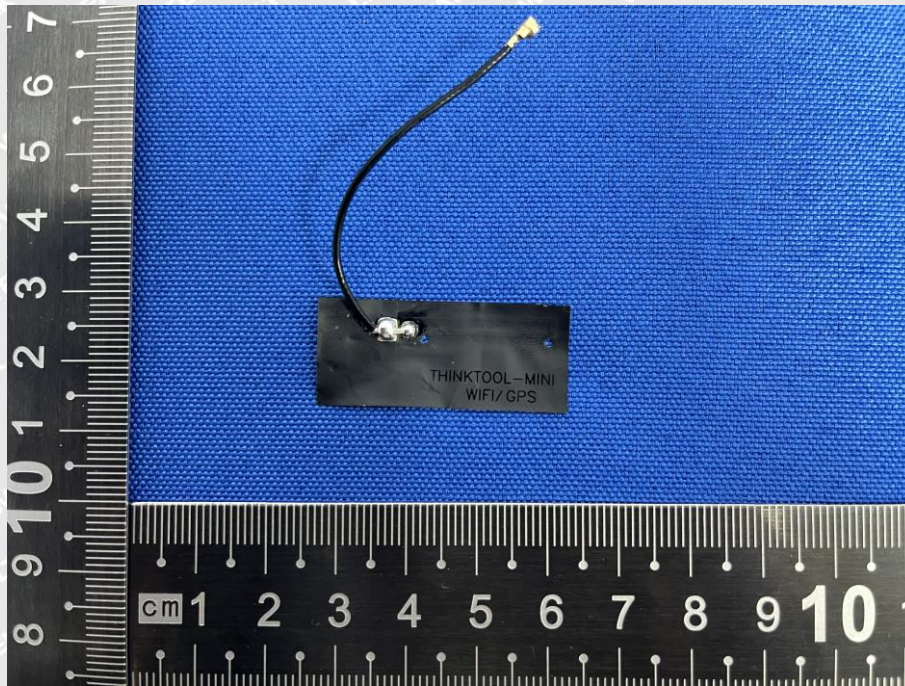


Solder Board-Component View 7





Solder Board-Component View 8



Solder Board-Component View 9





Antenna View



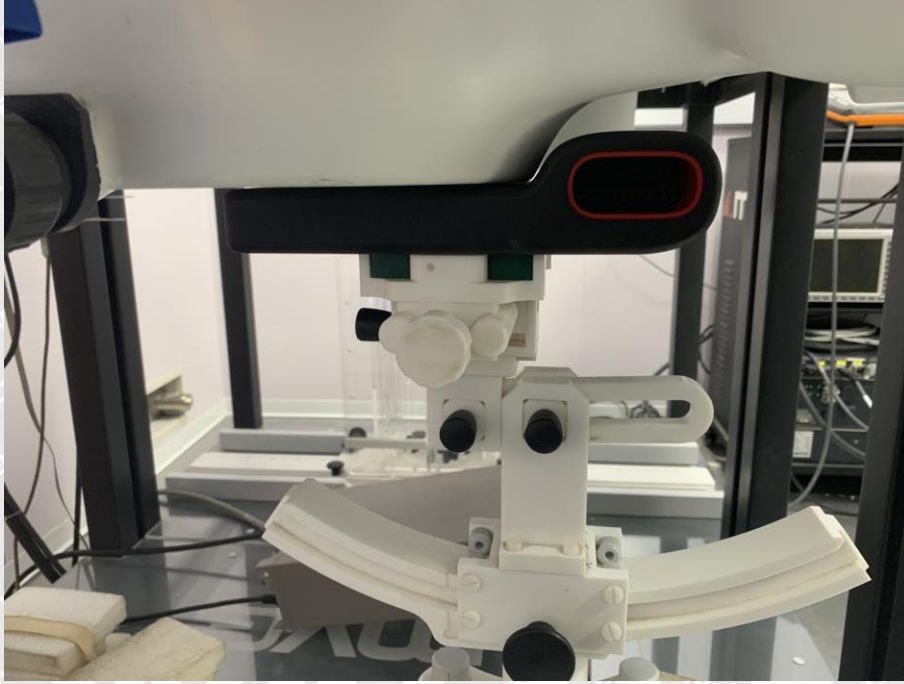
WALTEK



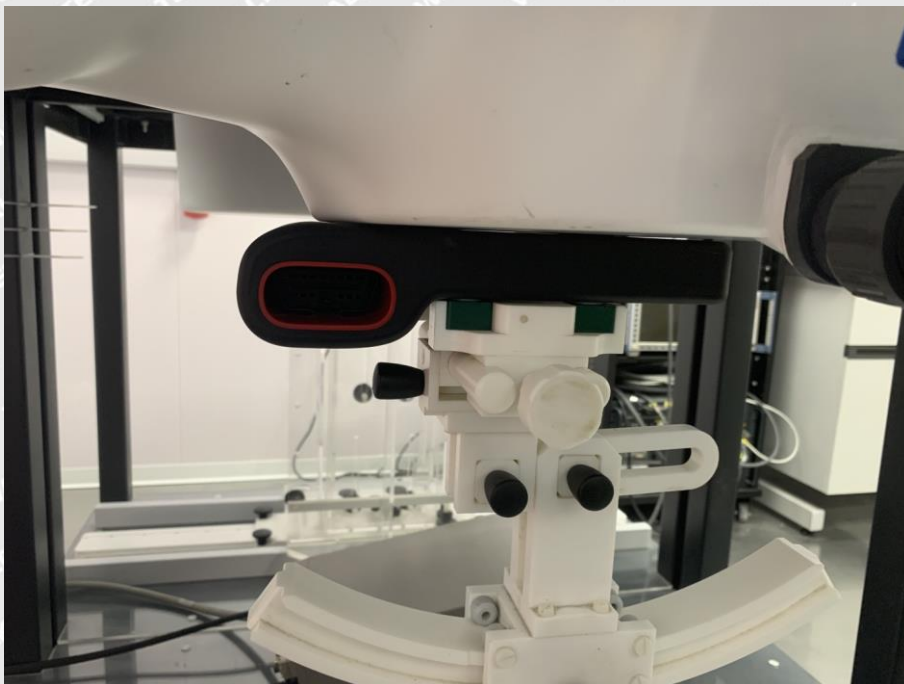
Annex D. Test Setup Photos

Body mode Exposure Conditions
Test distance: 0mm

Body Back

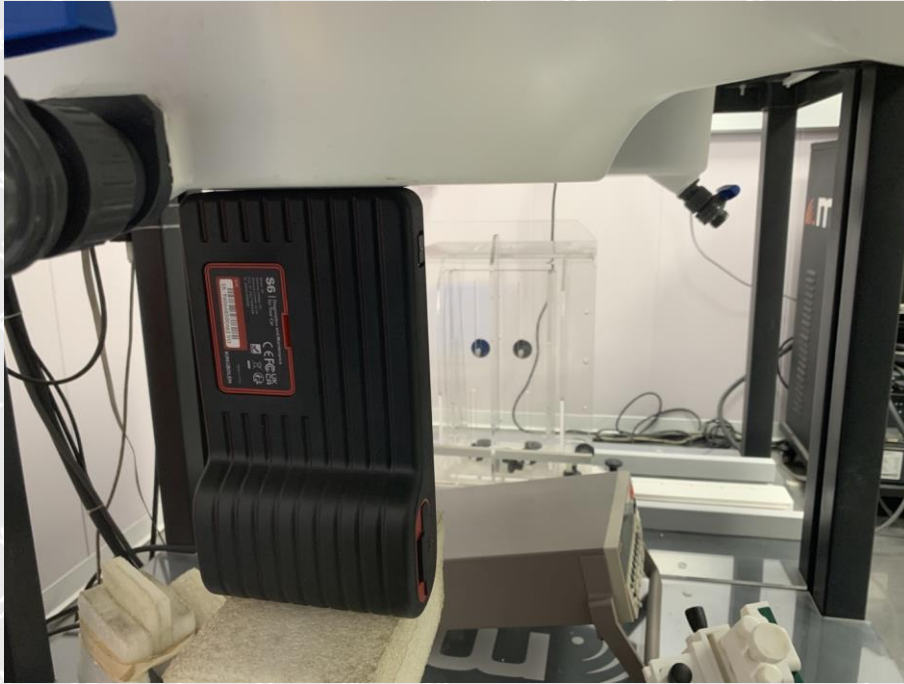


Body Front

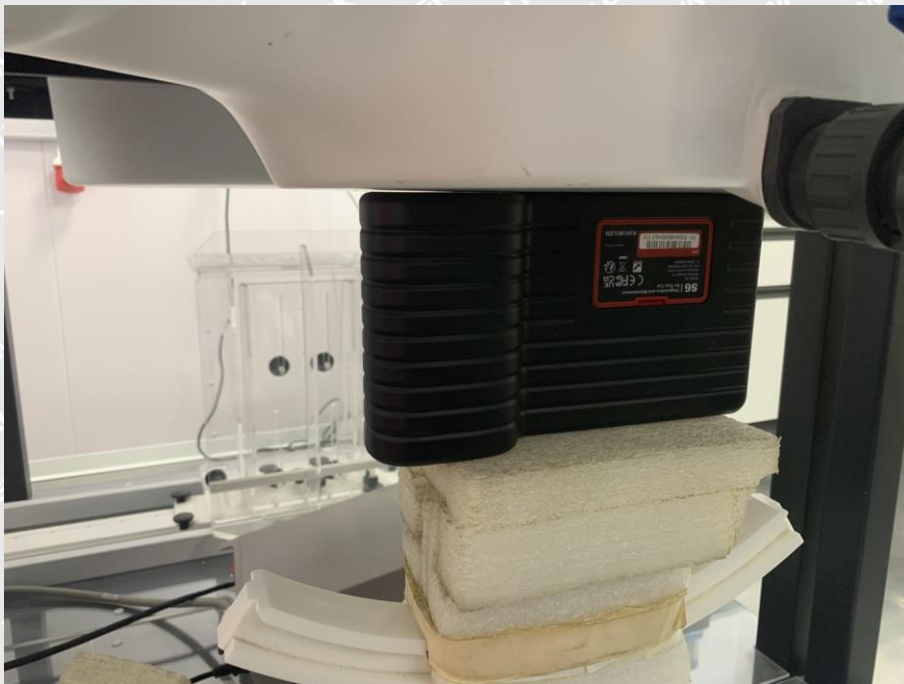




Body Right



Body Bottom





Annex E. Calibration Certificate

Please refer to the exhibit for the calibration certificate

WALTEK

***** END OF REPORT *****