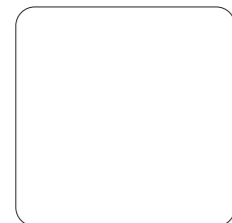


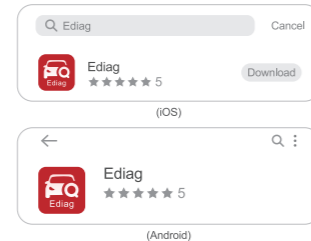
Ediag Mini



EN

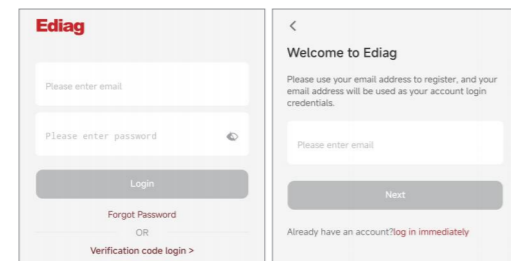
1 Download the Ediag App

Search for "Ediag" in the App Store or in GooglePlay Store. The Ediag App is FREE to download. (as shown in the figure below)



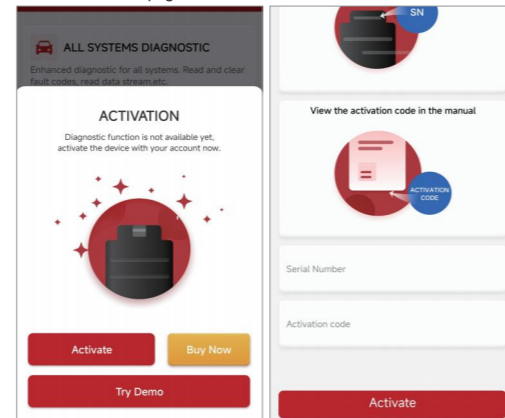
2 Sign In or Sign Up

If you already have a Ediag account, please sign in with your credentials. If you do not have an account, please sign up as explained in the following paragraph. How to Sign Up for an Account: Open the Ediag App, click on "Sign Up". Input your username, email, and verification code (which will be sent to the email you input), then create your own password. Click on "Sign Up" to finish your registration.



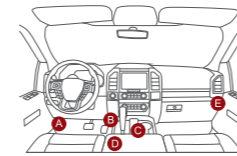
3 Activate a Ediag Mini Device

Click on "Activate" to open the activation page. You need to input the serial number and an 8-digit activation code, to complete the process of activation and account binding for your Ediag Mini device. Activation code is on the first page of the Quick Start Guide.



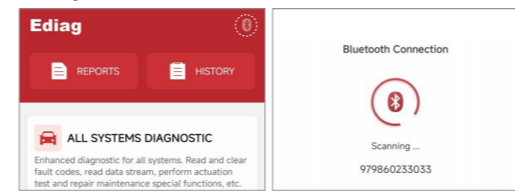
4 Insert the Ediag Mini Device into the OBDII port in your vehicle

Usually, the OBDII port is located under the dashboard, above the pedal on the driver's side. Here are the 5 common positions for the OBDII port (as shown in the figure right). Insert the Ediag Mini device, there will be a green light which indicates the device is powered on.



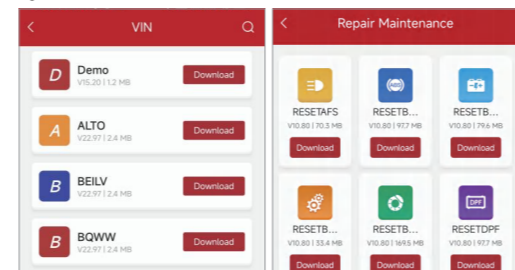
5 Bluetooth Connection

Open the Ediag App, it will automatically search for activated devices. Select your device and connect to it via Bluetooth in the App. Note: Please do not directly connect the device to your phone via Bluetooth settings in your phone OS. Make sure to pair your device within the App following the instruction.



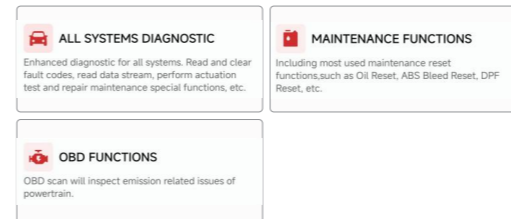
6 Download Diagnostics Software

In the "Diagnostics" interface of the App, you will need to download the corresponding diagnostics software when first time perform "All System Diagnostic" and "OBD Functions". And there is no need to download again next time.



7 Start to Use Your Ediag Mini Device

After the bluetooth connection, you can use all the functions of your Ediag Mini device, such as: All Systems Diagnostics, Maintenance & Service Functions, OBDII Diagnostics.



8 FAQ

Q: What do the different lights on Ediag Mini indicate?

A: There are four different lights on Ediag Mini:

Continuous Red Light: Ediag Mini device is powered on.

Continuous Blue Light: Bluetooth is connected.

Flashing Blue Light: Bluetooth is in communication.

Q: Why do I need to download the diagnostics software after downloading the App?

A: Due to a variety of vehicle manufacturers on the market, different vehicle manufacturers require corresponding diagnostics software. Therefore, Ediag Mini will recognize the vehicle manufacturer first while diagnosing, then it will download the corresponding diagnostics software to work.

Q: What vehicles can Ediag Mini diagnose?

A: Ediag Mini is compatible with all vehicles supporting OBDII/EOBD protocols after 1996.

Note: Depending on your vehicle, the diagnostics software size varies and download speed is different as well. When first downloading the diagnostics software, it might require a good network connection.

Q: What are the special functions of Ediag Mini?

A: Ediag Mini supports 15 special functions, including: AFS, RESET, Elec.Throttle RLRN, Immobilizer/Keys, INJECTOR, RESET

BRAKE, RESET OIL, RESET SAS, RESETBLEED, RESETBMS, RESETBX, RESETDPF, RESETEGR, RESETPMS, SUNROOF, RESET SUS. According to different vehicle manufacturers' diagnostics software, there will be more special functions to come.

Q: Does Ediag Mini need firmware upgrade?

A: Yes, it does. When the Ediag Mini device is connected via Bluetooth to your smartphone, it will automatically check if the firmware on your device is the latest version. If it's not, it will upgrade automatically.

Q: What smartphones can download Ediag App?

A: Ediag App supports smartphones with Android 5.0 and above, IOS 9.0 and above. It cannot be used on PC with WINDOWS system.

Q: Can the same App account bind with multiple devices?

A: Yes, you can set them up in the App.

9 Warranty Card

1. In addition to the legal withdrawal right, you benefit from a 30-day money back guarantee. The device is also guaranteed for a period of one year.

2. Before replacement, please ensure complete packaging; Before replacement/repair, please call the service number to get the shipping address.

3. Product warranty starting date is based on the payment date.

Service Line: 0755-23445106

Customer Service Email: support@kingbolen.com

Official Website: www.kingbolen.com

Youtube: Kingbolen auto scanner center

Facebook: @kingbolen.fans

Instagram: @kingbolen.fans

KINGBOLEN®

FCC Requirement

Changes or modifications not expressly approved by the party responsible for compliance could void the user's authority to operate the equipment. This device complies with Part 15 of the FCC Rules.

Operation is subject to the following two conditions:

- (1) this device may not cause harmful interference, and
- (2) this device must accept any interference received, including interference that may cause undesired operation.

Note: This equipment has been tested and found to comply with the limits for a Class B digital device, pursuant to Part 15 of the FCC Rules. These limits are designed to provide reasonable protection against harmful interference in a residential installation. This equipment generates, uses, and can radiate radio frequency energy, and if not installed and used in accordance with the instructions, may cause harmful interference to radio communications. However, there is no guarantee that interference will not occur in a particular installation. If this equipment does cause harmful interference to radio or television reception,

which can be determined by turning the equipment off and on, the user is encouraged to try to correct the interference by one or more of the following measures:

- Reorient or relocate the receiving antenna.
- Increase the separation between the equipment and receiver.
- Connect the equipment into an outlet on a circuit different from that to which the receiver is connected.
- Consult the dealer or an experienced radio/TV technician for help



IC Requirement

This device contains licence-exempt transmitter(s)/receiver(s) that comply with Innovation, Science and Economic Development Canada's licence-exempt RSS(s). Operation is subject to the following two conditions:

- (1) This device may not cause interference.
- (2) This device must accept any interference, including interference that may cause undesired operation of the device.

L'émetteur/récepteur exempt de licence contenu dans le présent appareil est conforme aux CNR d'Innovation, Sciences et Développement économique Canada applicables aux appareils radio exempts de licence. L'exploitation est autorisée aux deux conditions suivantes :

- 1) L'appareil ne doit pas produire de brouillage;
- 2) L'appareil doit accepter tout brouillage radioélectrique subi, même si le brouillage est susceptible d'en compromettre le fonctionnement.