

Wi-Fi 天线性能测试

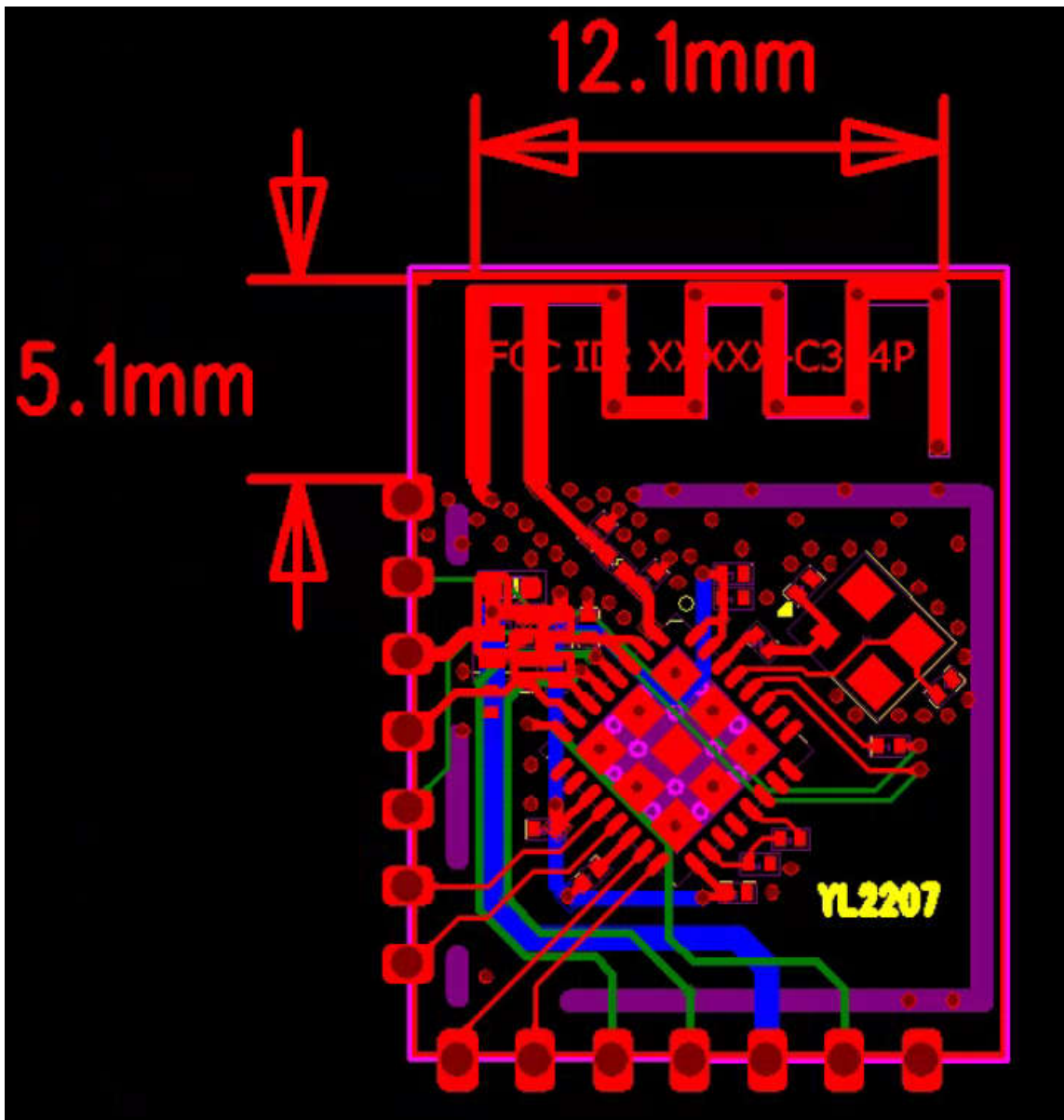
Wi-fi antenna performance test

广州英荔教育科技有限公司

APPLications

※Wi-Fi 2.4GHz applications

一、Dimensions

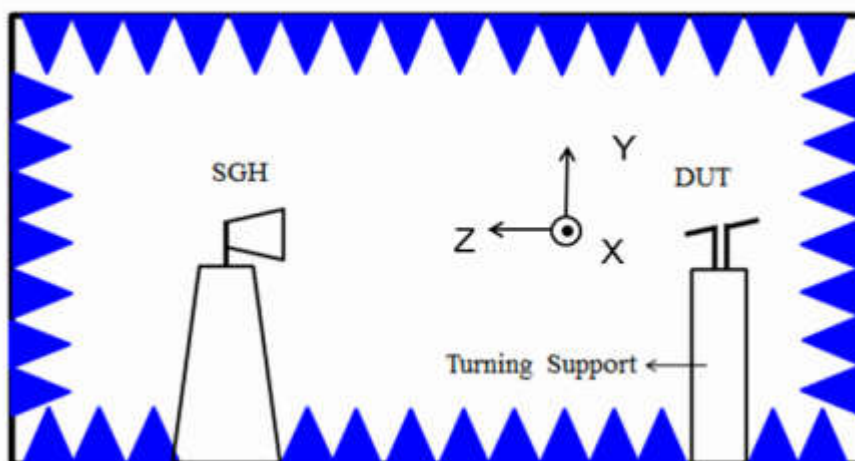


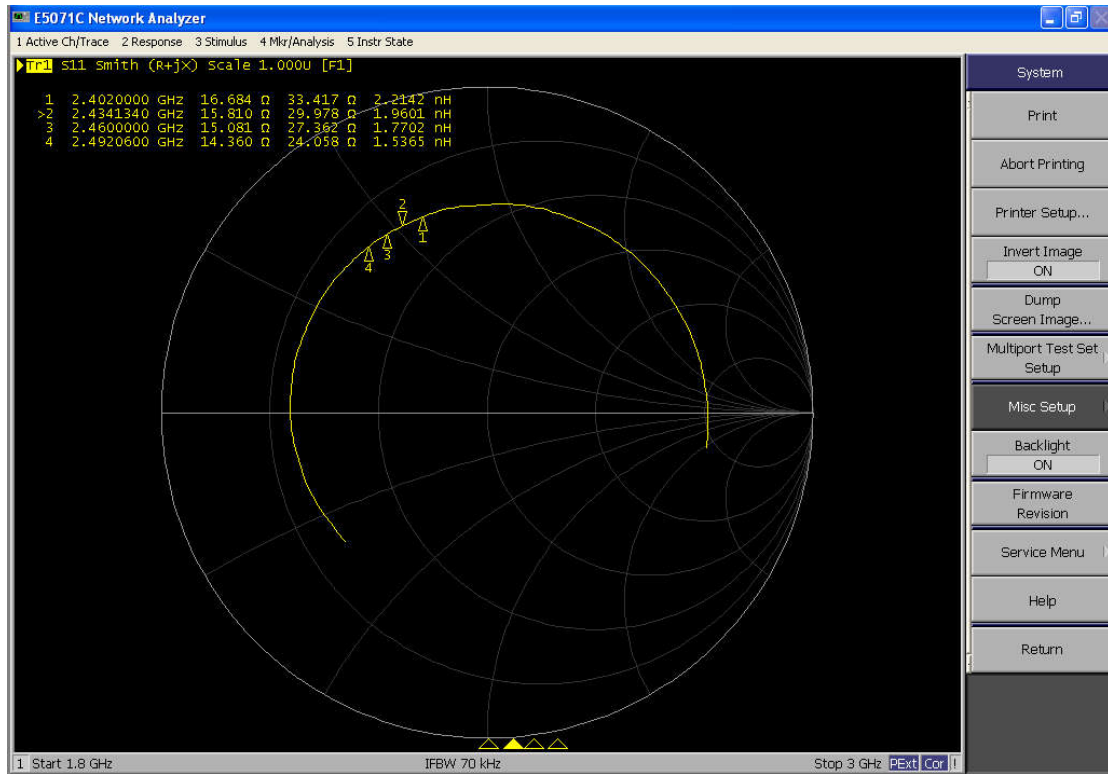
二、 Specifications

number	Item	Specifications
1	Working Central Frequency	2440 MHz
2	Band Width	(2400-2480)MHz
3	Gain	0dBi
4	VSWR	≤ 2.0
5	Antenna type	PCB antenna
7	Impedance	50 欧姆

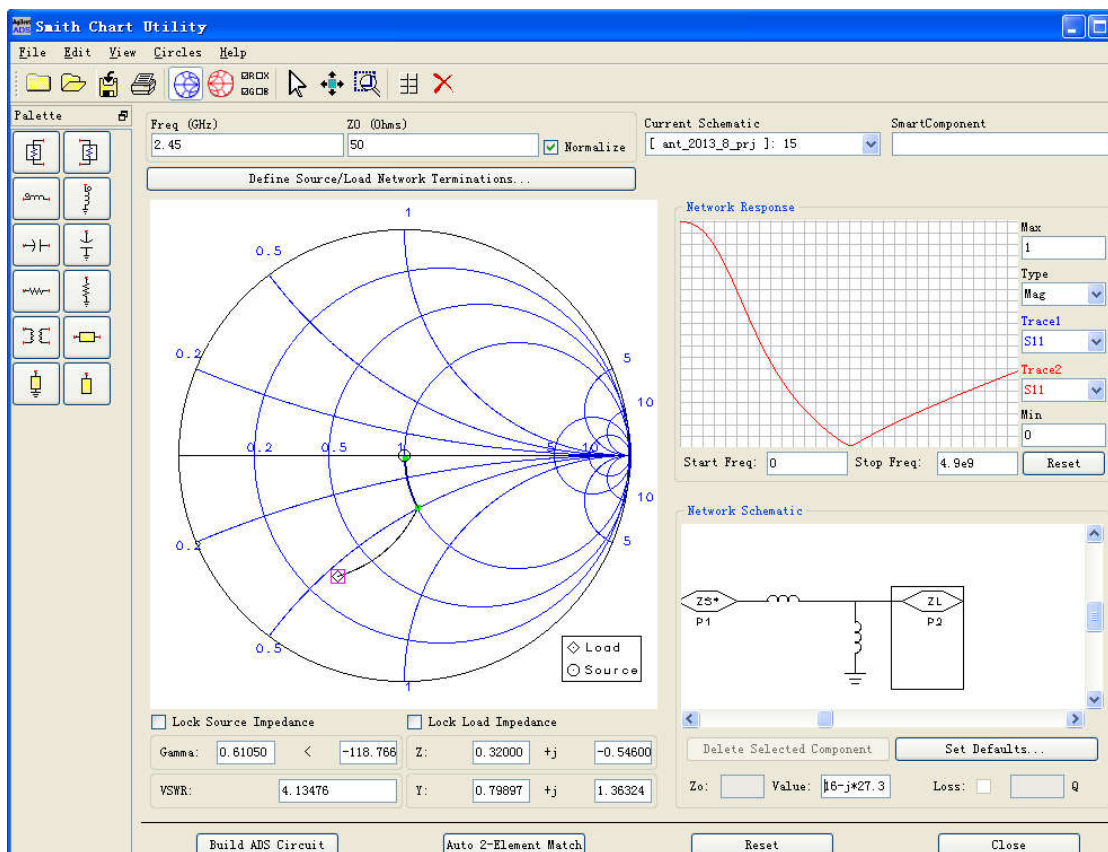
三、Test result chart

	Efficiency	Peak Gain	Directivity
2400MHz	38.57%	-0.5dBi	-0.15dBi
2450MHz	39.45%	0dBi	1.44dBi
2480MHz	38.33%	-0.7dBi	-0.20dBi





共轭匹配后



未进行匹配前的阻抗数据
Impedance data before matching

1、Return Loss (匹配后的阻抗)

Mkr1:2402MHz

Mkr2:2434MHz

Mkr3:2460MHz

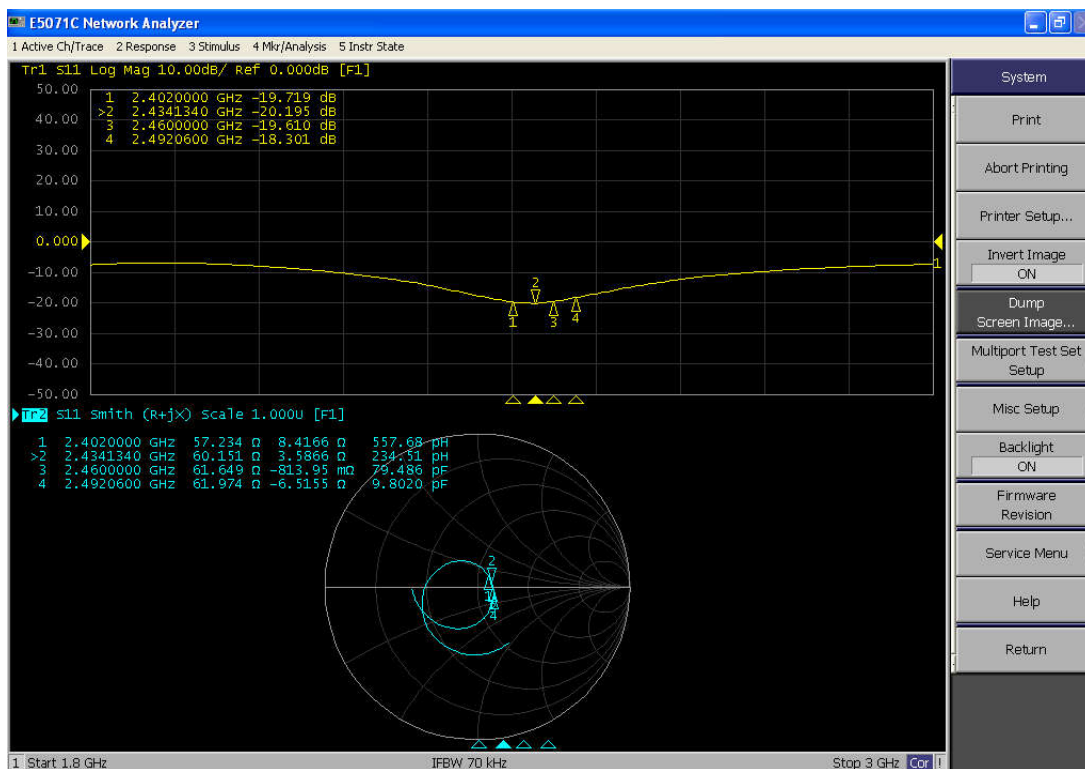
Mkr4:2492MHz

Mkr1:-19.7db

Mkr2:-20.1db

Mkr3:-19.6db

Mkr4:-18.3db



2、VSWR

Mkr1:2402MHz

Mkr2:2434MHz

Mkr3:2460MHz

Mkr4:2492MHz

Mkr1:1.22

Mkr2:1.24

Mkr3:1.28

Mkr4:1.33

