



深圳市宇维龙电子有限公司

Shenzhen yuweilong Electronics Co. Ltd

# 规格承认书

SPECIFICATION FOR APPROVAL

客户 Customer	深圳市天地飞科技开发有限公司
项目名称 Project Name	wifi 天线
客户料号 Customer NO.	
规格 specification	WIFI 天线
供方料号 Supplier NO.	AN2400-TA100EX-001
规格书编号 Specification NO.	
编写人 Write by	骆毅
版本 REV.	Ver.1
日期 Date	2021/08/5
备注 Note	

客户确认 CUSTOMER APPROVED BY		
批准 Approved by	审核 Checked by	制表 Prepared by
供方确认 SUPPLIER APPROVED BY		
批准 Approved by	审核 Checked by	制表 Prepared by



## 2. 试验设备和条件(Test Equipment & Conditions)

2.1. **Network Analyzers** : KEYSIGHT P5002A

2.2. **Communications Test Set**: R&S CMW 500

2.3. **3D Chamber Test System**: 64探头测试系统





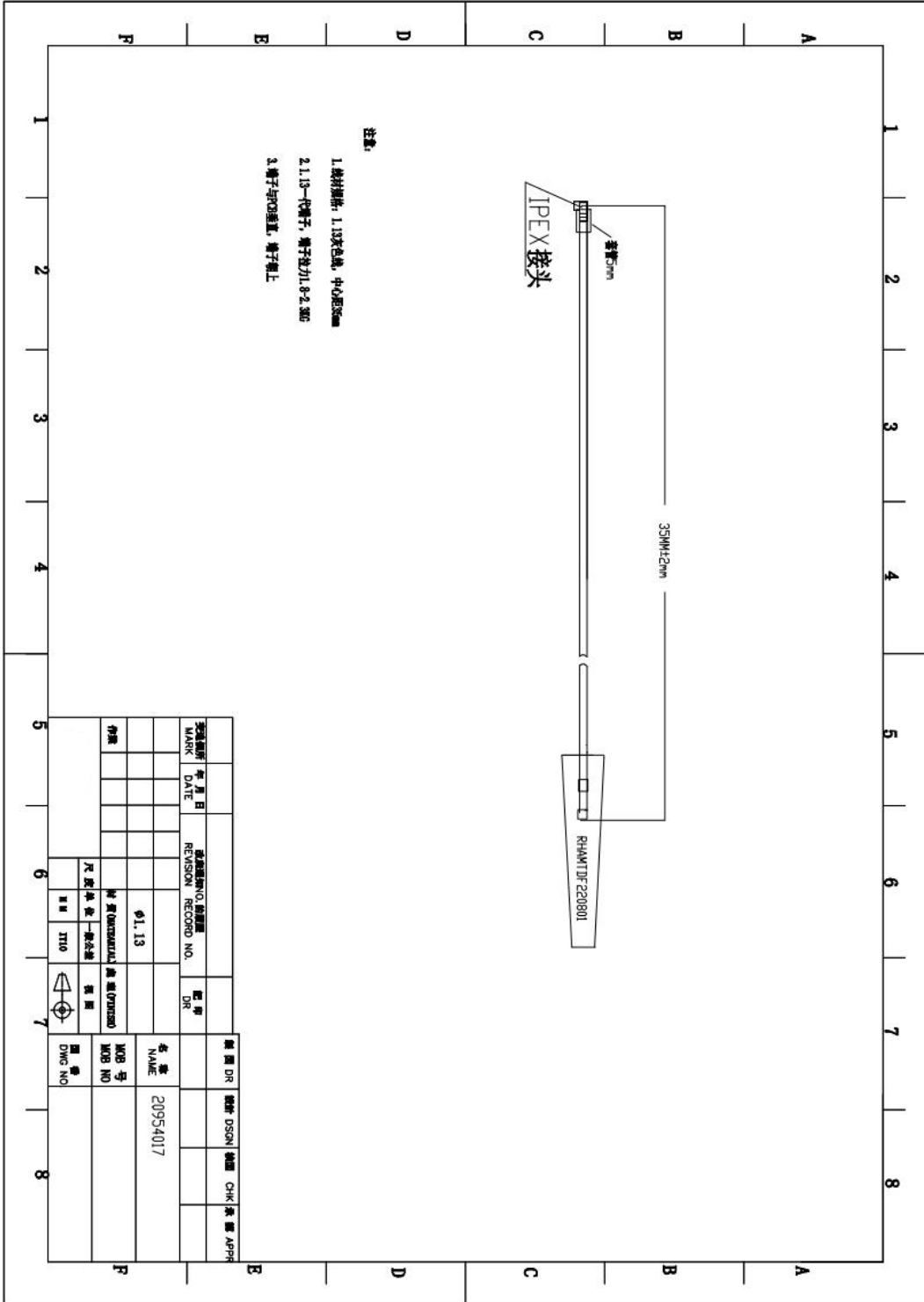
深圳市宇维龙电子有限公司

Shenzhen yuweilong Electronics Co. Ltd

---

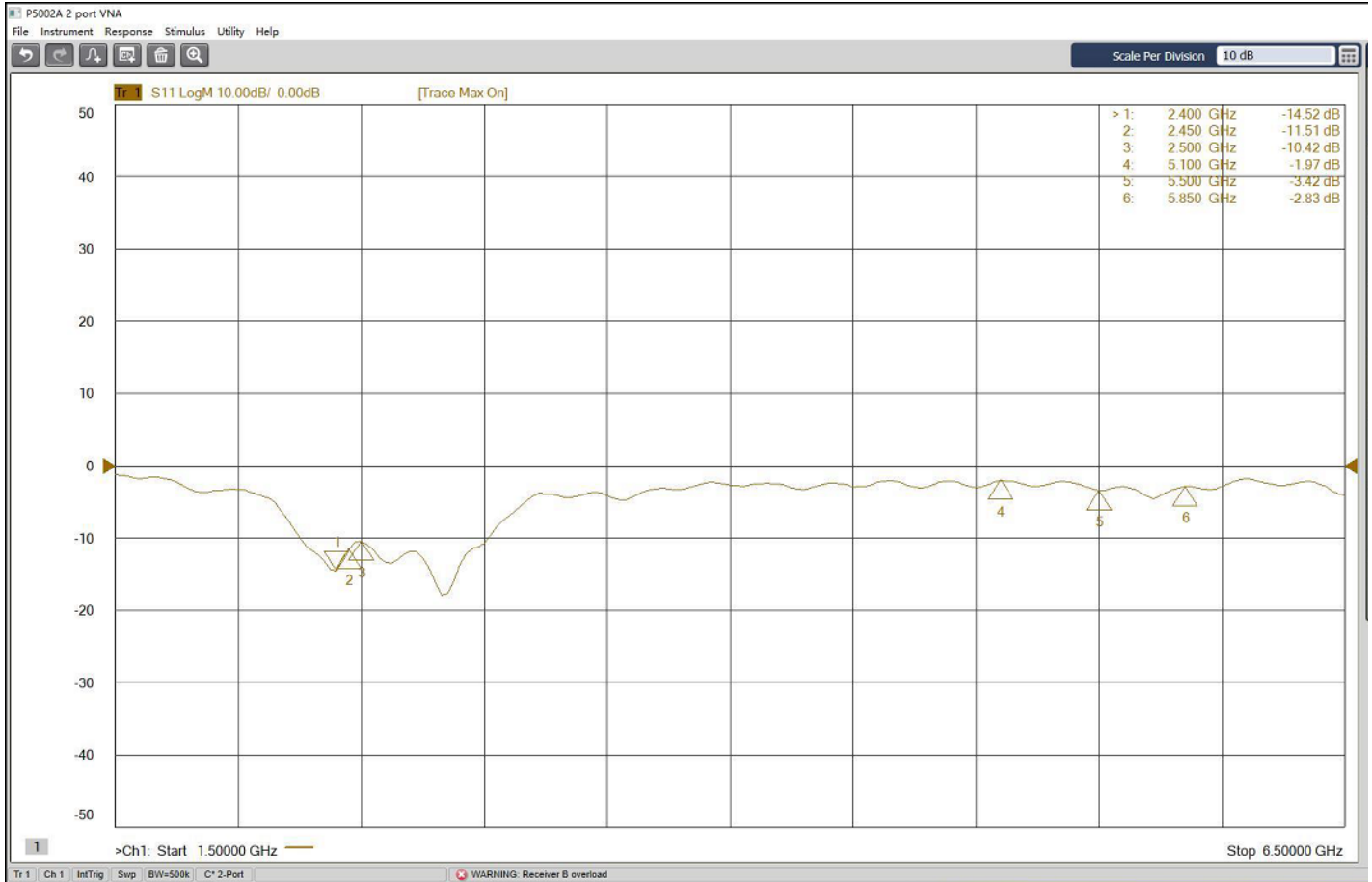
### 3. 样机结构说明件(Mechanical instruction)







## 4. S11



## 5. 增益/效率/3D图(Gain & Efficiency& 3D Pattern)

Frequency ID	1	2	3	4	5	6	7	8	9	10	11
Frequency (MHz)	2400.0	2410.0	2420.0	2430.0	2440.0	2450.0	2460.0	2470.0	2480.0	2490.0	2500.0
Gain (dBi)	2.42	2.56	2.59	2.62	2.58	2.69	2.52	2.38	2.59	2.69	2.55
Efficiency (%)	64.72	65.84	67.27	67.90	67.43	68.18	65.34	66.72	67.89	64.86	66.22



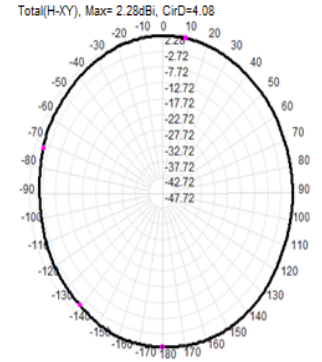
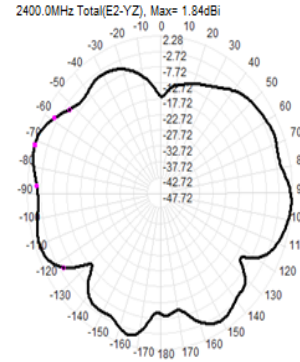
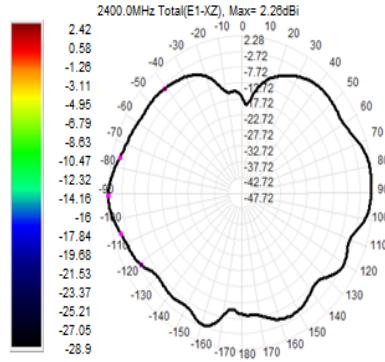
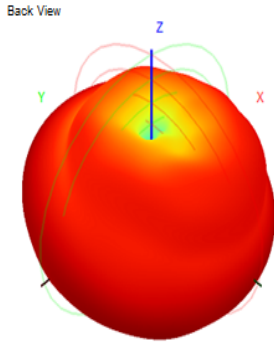
## 3D Pattern @2400-2500MHz

2400MHZ

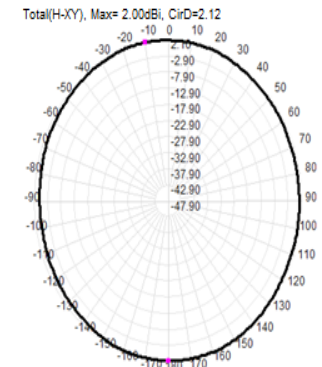
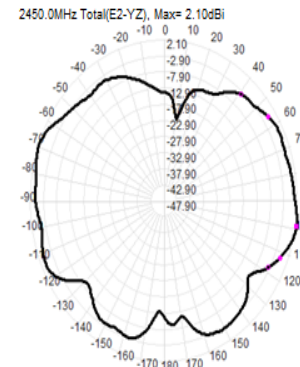
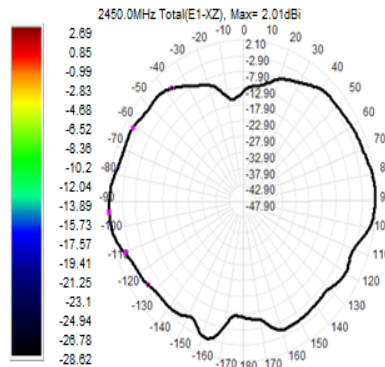
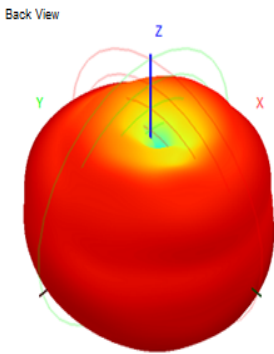
XZ

YZ

XY



2450MHZ



2500MHZ

