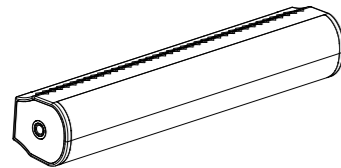


TL9RGB 说明书

材质:100g 书纸单色单面印刷 尺寸: 480 X 110 mm

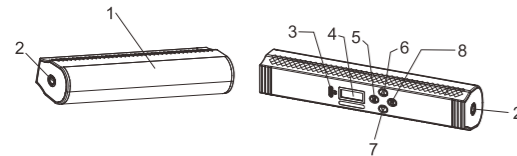
LED Light TL9RGB Instruction Manual



Safety tips:

To prevent any damage to your product or personal injury, please read the following safety precaution before operation and keep the manual for all users' looking up anytime. Before operating this unit, please read the instruction carefully and properly keep, for future reference.

1. Structure of Product:



1. Light Panel
2. 1/4"-20 threaded port
3. Charging Input
4. OLED Display Screen
5. Mode Button
6. Fn Up Button
7. Fn Down Button
8. ON/OFF switch button

2. Feature:

This is a RGB tube light with length 200mm, appearance small and delicate. It is assembled with 48pcs 5050 RGB LED beads and 75pcs 2500K 3030 warm white LED beads and 78pcs 8500K 3030 pure white LED beads. It is built-in a 2500mAh battery cell. There are CCT bi-color temperature mode, HSI color mode, and FX scene mode. There are six neodymium iron magnets inside the product, which enable the product to be adsorbed to the iron surface at multiple angles and directions.

3. Function and Feature

1. Switch ON/OFF

Long press the power button for 3 seconds to turn on the product and light up the display screen. In the startup state, long press the power button for 3 seconds, the light and display screen will be off, and the product will shut down.

2. Operation

In the startup state, press Fn up button and Fn down button to adjust the parameter behind symbol ">". Short press the power button to switch the options in the current mode. For example, in CCT mode, The value behind the symbol ">" is color temperature. At this time, short press the power button to adjust the option to brightness. At this time, the value after the symbol ">" is brightness. You can press Fn UP button and Fn down button to adjust the brightness. Press the mode button to switch between CCT, HSI and FX modes. Press Fn up button to increase and Fn down button to decrease.

3. Battery Level Display

After the product is turned on, the battery icon will be displayed in the screen. There are three grids of battery power and one grid will be lost when the battery power is reduced by about 30%. When the power indicator starts blinking, it indicates battery lower power and it should be charged.

4. Charge the Product

When the product with low power, it should be charged as soon as possible. Please power a 5V 2A charger on, then the TYPE-C plug is inserted into the TYPE-C charging port of the product. At this time, the power icon will display like flowing water. As about every 30% power is charged, one battery power grid will appear. When all grids show up means the battery is fully charged.

5. APP Operation Guide:



1. Use a mobile phone to scan above code to download the APP, or search and download the APP "LightAttendant" from Google Play(Android) or APP Store(iPhone IOS)
2. To turn APP on, you need to agree all necessary permissions and function switches. If Bluetooth is not enabled, it will prompt you to turn on Bluetooth to scan and connect the device. Select "Confirm to turn on Bluetooth" or manually turn on Bluetooth of the mobile phone (IOS requires to turn on manually).
3. The product turned on normally.
4. Click "+" of APP (as Fig. 1) to enter the interface of "Scan to Device" and scan the device. After a few seconds, photo of bound device and device name will be displayed as shown in Fig. 2. Click Add, it will display the Fig. 3 interface. When the words "Light status: Paired" shows up and click the interface Fig.3, then it goes into the interface like Figure 4. Click "Ch: 1/Grp: A" on the upper right of the interface in Figure 4 to select the SAME Grp CH as the light. By selecting different options on the top right side of the APP, the controlled devices will also be adjusted to corresponding option. Slide the grey block which shows the light status "Paired"(in Fig.3) to the left side, then the interface in Figure 5 will show up. Click "Delete" in Figure 5, the corresponding interface will appear to prompt you to delete the paired device.

Note: Click "Help" on each screen of the APP will show the operation guide. (When a device is not found during scanning, please make sure if the light is turned on or the Bluetooth in the mobile phone is enabled, then repeat above).



Fig.1

Fig.2

Fig.3

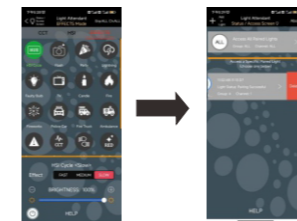
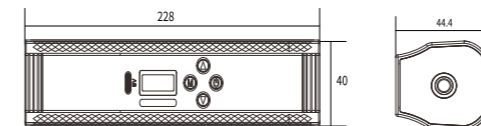


Fig.4

Fig.5

4. Product Dimension

Unit : mm Tolerance : ±1.0mm
Length: 228 Width: 40mm Thickness: 44.4mm



5. CAUTION:

1. This light is not dustproof and waterproof.
2. This light is a precision instrument. Please do not let the product fall to the ground, no collision or strong impact.
3. Do not cover the ventilation hole, otherwise it may increase the internal temperature and lead to fire or accident resulting in accident of product.
4. Do not place the product near flammable or volatile liquid, otherwise it may cause fire or smoke.
5. Please make sure the light is switched OFF when it is not used.
6. Do not put the product into the storage box after use immediately. Residual heat may damage the white LED. Cool the product thoroughly before placing it in the storage box.

6. Technical parameter

No	Item	Parameter
1	Applicable Range	Suitable for macro shooting, video shooting, macro video, live streaming and portrait shooting, still life shooting.
2	Beads Qty & Type	3030 2500K Warm White 72PCS, 3030 8500K Pure White 75PCS, 5050 RGB Color 48PCS
3	Max Power	True white, warm white: 8W ± 2W, RGB: 5W ± 1W
4	Luminous flux	500 LM ± 50LM
5	Color temperature range	2500K-8500K ± 200K
6	CRI	>95
7	Brightness adjustable range	0% - 100%
8	Battery Cells	3.7V 2500mAh 9.25Wh
9	Mode	CCT: Brightness color temperature adjustable. HSI: Brightness Hue Saturation adjustable. FX: Brightness Fx adjustable: Cop Car, Ambulance, Fire Alarm, Lightning, Fireworks, TV, Candle, Party, Fault Bulb, Pulsing, Strobe, RGB Strobe, Paparazzi, Emergency, H/L Beam, Red Flash, Green Flash, Blue Flash, HSI Slow, HSI Fast total 20 types.
10	RGB color gamut	0-360° full color
11	Charger	5V(±5%) 2A Charging time: about 90 mins. Discharging time: about 60 mins.
12	Saturation range	0-100 Control method button
13	Display method	OLED display with white text on black background
14	Net weight	About 220g
15	Working environment temperature	0°C~40°C
16	Storage temperature	-10°C~50°C
17	Relative humidity	20%~80%
18	Product Dimension	228X40X44.4 mm

- Specifications and design are subject to change without notice.

FCC Warning

This device complies with part 15 of the FCC Rules. Operation is subject to the following two conditions: (1) This device may not cause harmful interference, and (2) this device must accept any interference received, including interference that may cause undesired operation.

Any Changes or modifications not expressly approved by the party responsible for compliance could void the user's authority to operate the equipment.

This equipment has been tested and found to comply with the limits for a Class B digital device, pursuant to part 15 of the FCC Rules. These limits are designed to provide reasonable protection against harmful interference in a residential installation. This equipment generates uses and can radiate radio frequency energy and, if not installed and used in accordance with the instructions, may cause harmful interference to radio communications. However, there is no guarantee that interference will not occur in a particular installation. If this equipment does cause harmful interference to radio or television reception, which can be determined by turning the equipment off and on, the user is encouraged to try to correct the interference by one or more of the following measures:

- Reorient or relocate the receiving antenna.
 - Increase the separation between the equipment and receiver.
 - Connect the equipment into an outlet on a circuit different from that to which the receiver is connected.
 - Consult the dealer or an experienced radio/TV technician for help.
- The device has been evaluated to meet general RF exposure requirement. The device can be used in portable exposure condition without restriction.