

QST008A-5WN Wireless Charging Pad (without pull tab)

Key Feature:

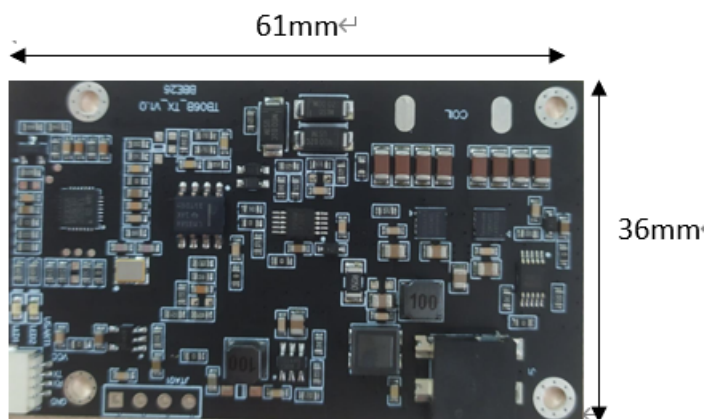
- Under-The-Table Wireless Charger for thick desks & tabletops without drilling or screwing required, suitable for marble, wood, glass, and other non-metallic tablets or desks
- Foreign object detection (FOD) and Over-current (OCP)/Over-voltage (OVP)/Over-temperature (OTP)
- Meet Qi standard, it can charge all mobile phones with Qi wireless charging function
- The maximum charging power is 5W. Compatible with Qi BPP (5W).

Specification

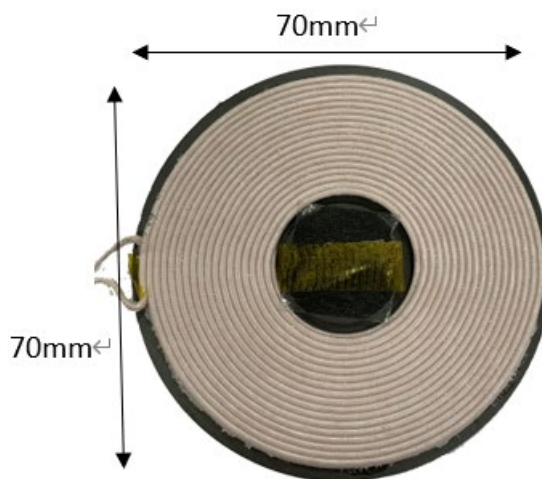
Input Power	DC 19V/0.94A (18W)
Charging Power	5W (max.)
Power Input Interface	DC Jack, $\phi 3.5 * \phi 1.35$
Charging Distance	8mm -14mm
Operating Frequency	150-205kHz
Protection Function	FOD 、 OCP(0.94A) 、 OVP(20V) 、 OTP (75°C)
Supporting Device Number	1 unit
LED Indicate	Blue Breathing: Standby Mode
	Blue: Working mode
	Red Twinkled: FOD / Error / Others
Outline Dimension	PCBA: 61.0 × 36 × 6.5max. (mm)
	Coil Module: 70.0 × 70.0 × 3.8max. (mm)
	Housing: 170(L) x 76 (W) x 11(H) mm
Operating Temperature	0°C ~ 40°C
Storage Temperature	-20°C ~ 70°C
Operating Humidity	15 ~ 85% RH (Non-dewing)
Storage Humidity	5 ~ 95% RH (Non-dewing)

Outline Diagram

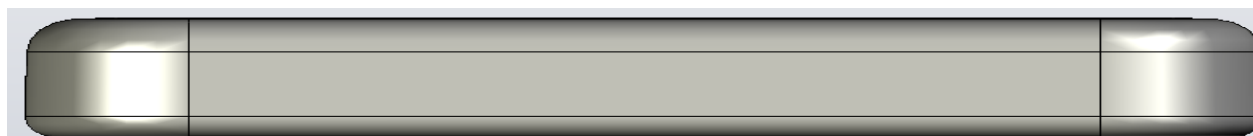
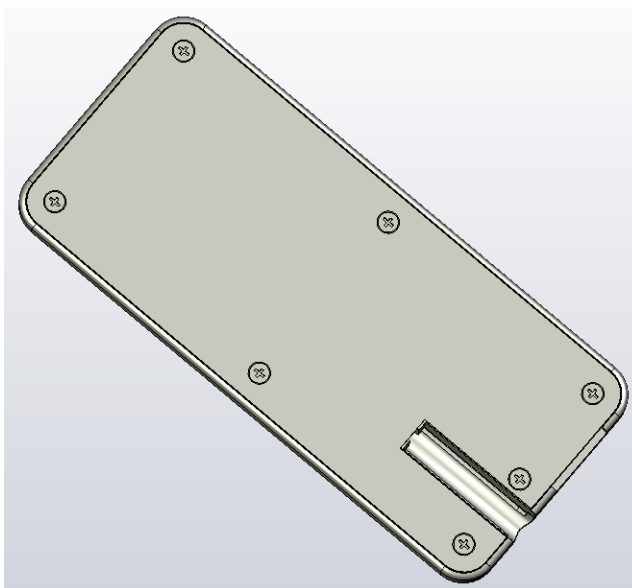
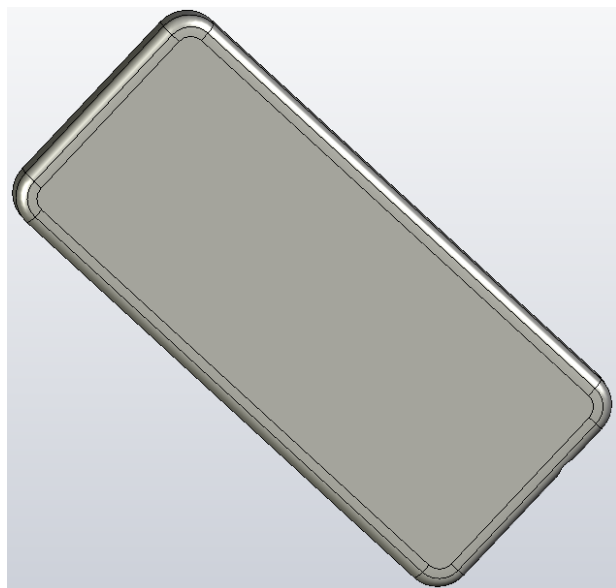
PCBA Size: L61 x W36 x H6.5mm



Coil Size: L70 x W70 x H3.8mm



Housing Size: L170 x W76 x H11mm



Order Information

Model Name	Description
QST008A-5WN	Wireless Charger Pad (without Pull Tab)

Notes

1. It cannot charge some small Qi electronic devices such as TWS Bluetooth headset due to the limitation of coil size.
2. This product has FOD (Foreign Object Detection) function. When metal objects (such as keys, ID cards, credit cards, bus cards, etc.) appear in the charging area, the wireless charger will automatically stop charging. However, it is still necessary to avoid placing smart cards such as ID cards, credit cards, bus cards, access cards, etc. in the charging area to avoid being damaged.
3. Please don't put anything with RFID function into the charging area, such as ID cards, credit cards, deposit cards, security badges, passports, and key fobs while the phone is charging. These RFID cards could run the risk to be damaged by the magnetic field of the wireless charger.
4. Please don't directly expose the wireless charger to the sunlight or install it close to any heating equipment such as microwave oven, roaster, and water heater.
5. Please don't toss, pressure, or puncture the wireless charger. High external pressure will cause damage to the device.
6. Please don't put any metallic objects into the charging area. The charger will stop charging automatically when metallic objects are placed within the charging area. Please remove the metallic objects and the phone will resume charging after a few seconds.
7. If charging is stopped with unknown reasons other than metallic foreign objects, please remove the mobile phone and then place it back into the charging area.
8. Each mobile phone has its own wireless charging behavior, and the charging speed could be different on the charger by various of charging algorithm. The charger cannot guarantee whether the phone enters fast charging or not.
9. This product should be only installed under non-metallic tabletops, such as marble, glass, wood, plastic, and other non-metallic materials. For composite tabletops, please confirm whether it contains metal components
10. Please use the original accompanied AC adaptor to power the wireless charger for best performance.

11. If there are metal structural parts such as table feet or brackets under the non-metallic table, there shall be at least above 35mm safety distance between the wireless charger and the metal structural parts.
12. If there are immovable metal objects inserted on the non-metallic table, there shall be at least above 35mm safety distance between the wireless charger and the metal objects.
13. When multiple wireless chargers are installed side by side, the distance between the wireless chargers must be at least 300mm, so as not to interfere with each other and affect the charging efficiency and function.

NOTE: This equipment has been tested and found to comply with the limits for a Class B digital device, pursuant to part 15 of the FCC Rules. These limits are designed to provide reasonable protection against harmful interference in a residential installation. This equipment generates uses and can radiate radio frequency energy and, if not installed and used in accordance with the instructions, may cause harmful interference to radio communications. However, there is no guarantee that interference will not occur in a particular installation. If this equipment does cause harmful interference to radio or television reception, which can be determined by turning the equipment off and on, the user is encouraged to try to correct the interference by one or more of the following measures:

- Reorient or relocate the receiving antenna.
- Increase the separation between the equipment and receiver.
- Connect the equipment into an outlet on a circuit different from that to which the receiver is connected.
- Consult the dealer or an experienced radio/TV technician for help.

Changes or modifications not expressly approved by the party responsible for compliance could void the user's authority to operate the equipment.

This device complies with Part15 of the FCC Rules. Operation is subject to the following two conditions:

- (1) this device may not cause harmful interference, and
- (2) this device must accept any interference received, including interference that may cause undesired operation.