

# SMD CERAMIC ANTENNA

## Data Sheet

---

# CS-2450-31-A

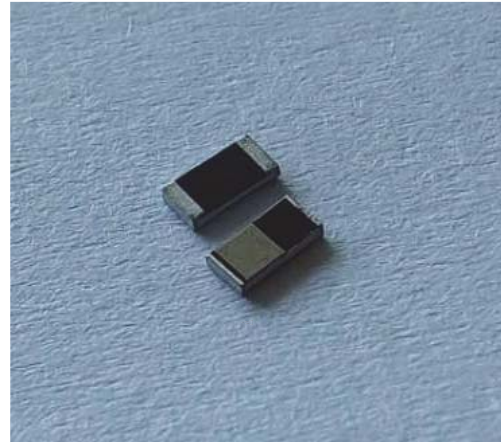
For 2400-2484MHz  
3.2x1.6mm [EIA1206]

### FEATURES

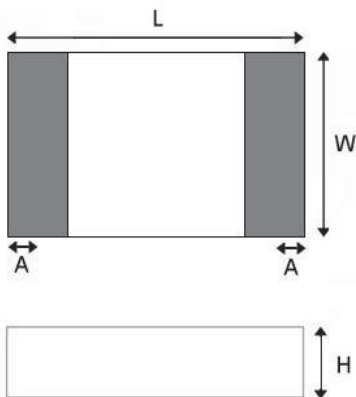
- Light weight,compact
- Wide bandwidth,lowcost
- Built-in antenna with high gain

### APPLICATIONS

- Bluetooth
- IEEE802.11g/b
- Zigbee systems,etc...



### SHAPES AND DIMENSIONS Dimensions in mm



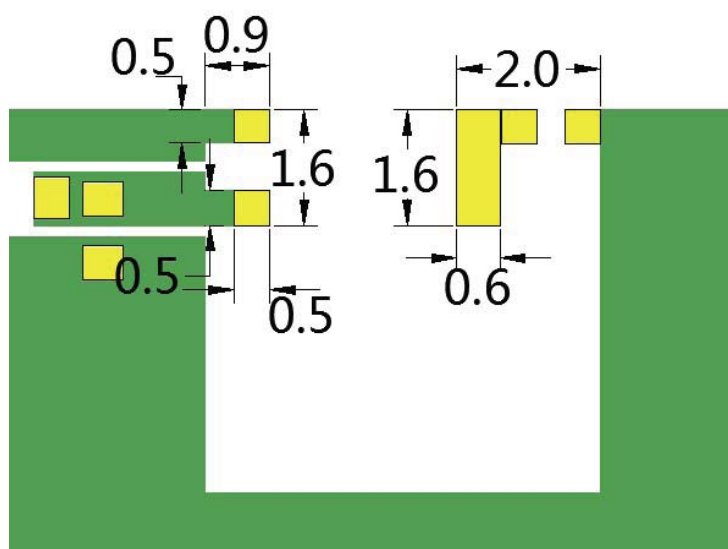
L	W	A	H
3.10±0.10	1.55±0.10	0.40±0.20	0.50±0.10

### Electrical Characteristics per line(TA= 25°C)

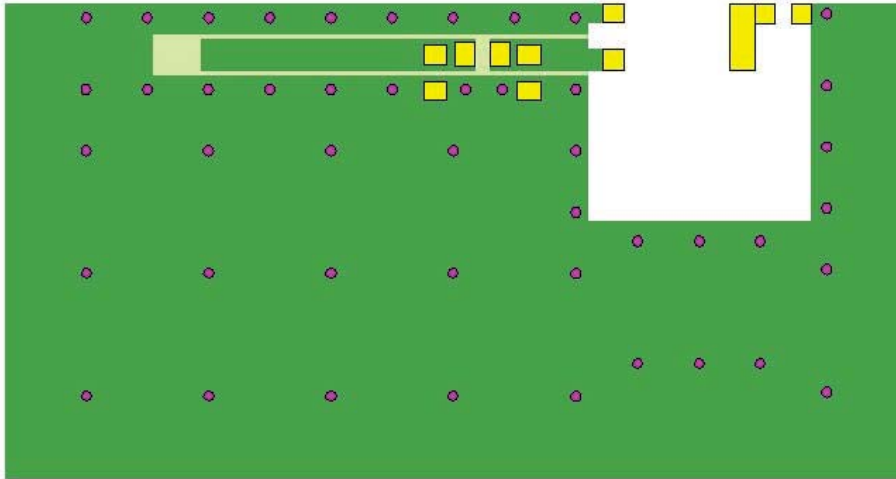
Parameter	Specification	Units
Frequency Band	2400~2483	MHz
Polarization	Line	
Peak Gain	2.67	dBi
Efficiency	72.30	%
Impedance	50	$\Omega$

### ■ Part Numbering System

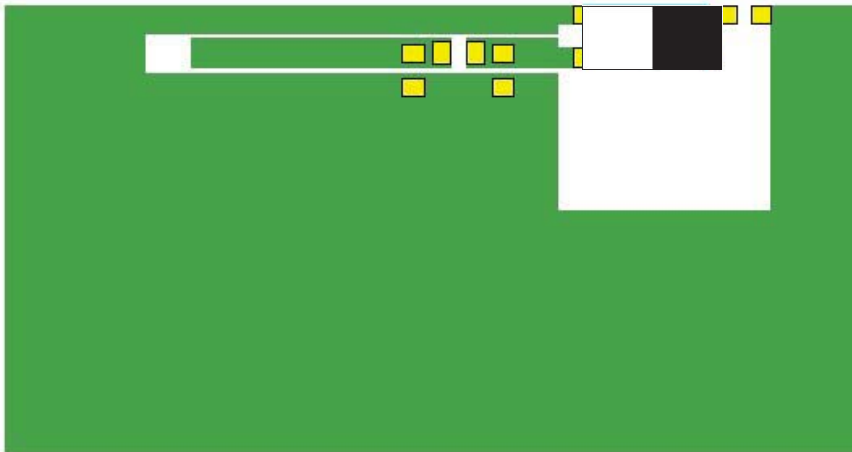
CS - 2450 - 31 - A  
 Material Frequency Size Type



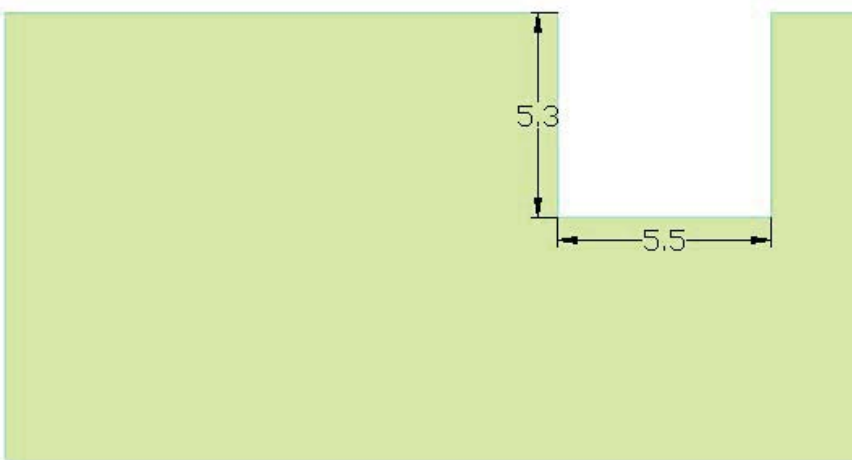
EVALUATION BOARD



- PAD
- 底层铺铜
- 顶层铺铜
- 打孔



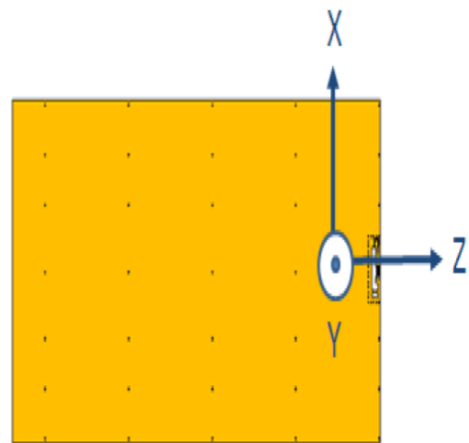
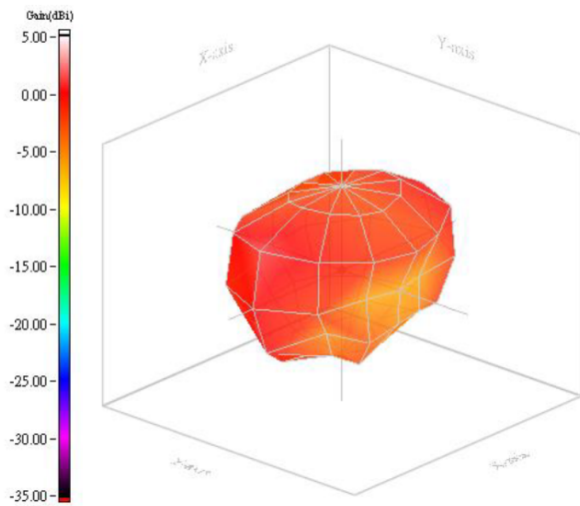
- 天线
- PAD
- 底层铺铜
- 顶层铺铜



■ RADIATION PATTERNS

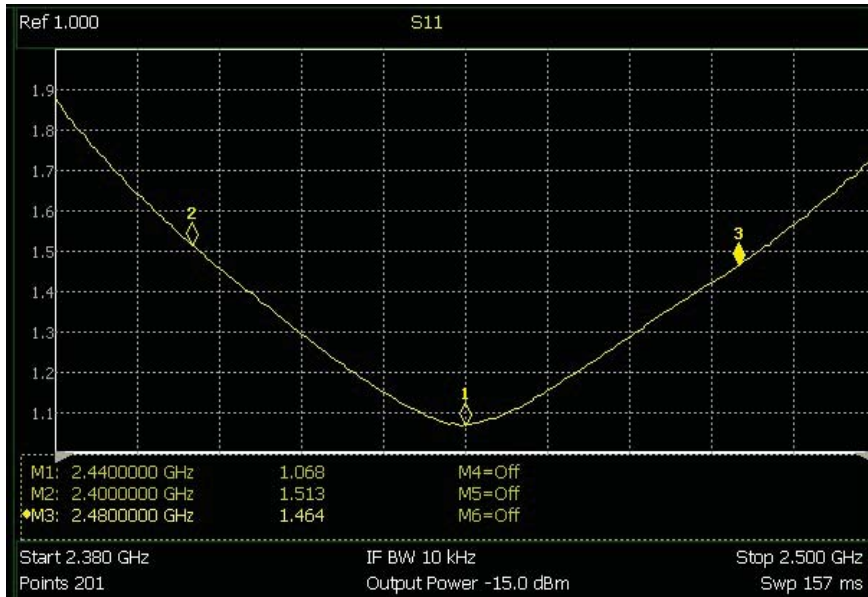
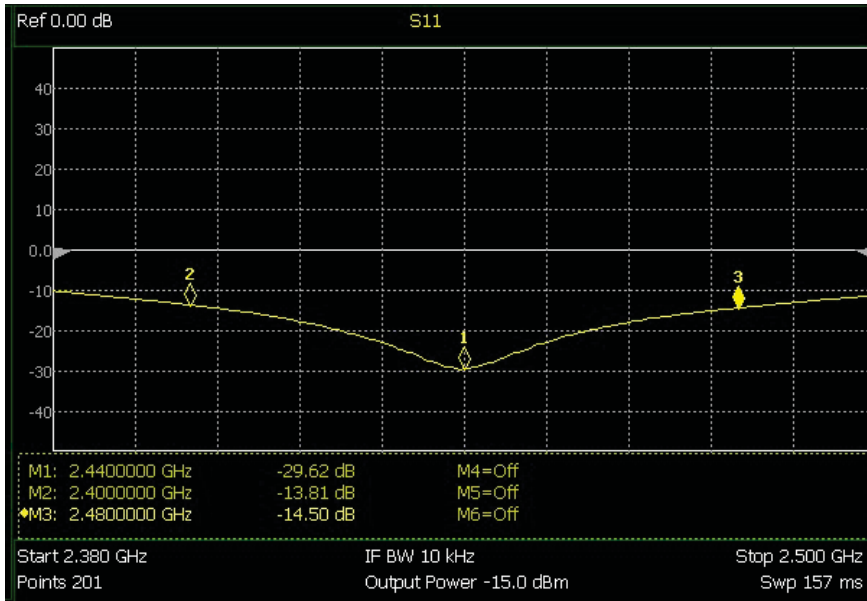
□ 2.4GHz WLAN BAND

Radiation

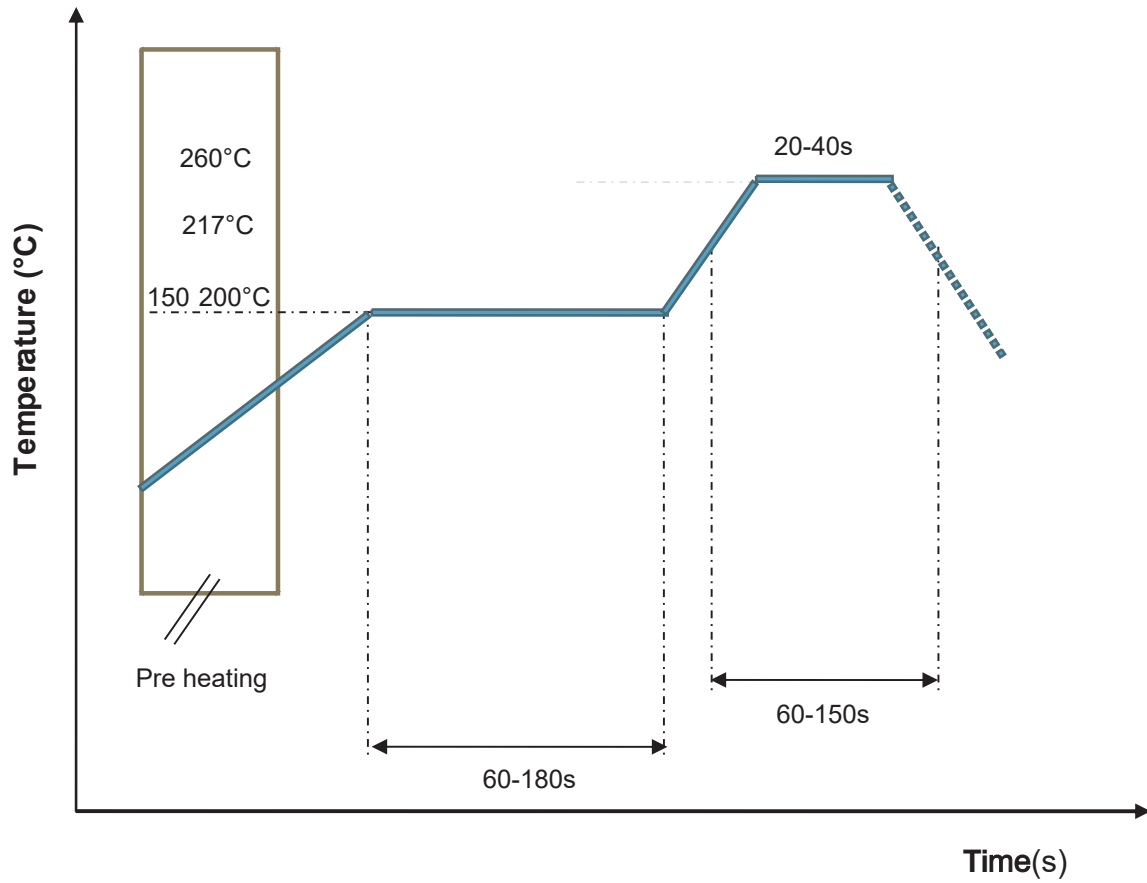


**FREQUENCY CHARACTERISTICS**

**EFFICIENCY AND VSWR**

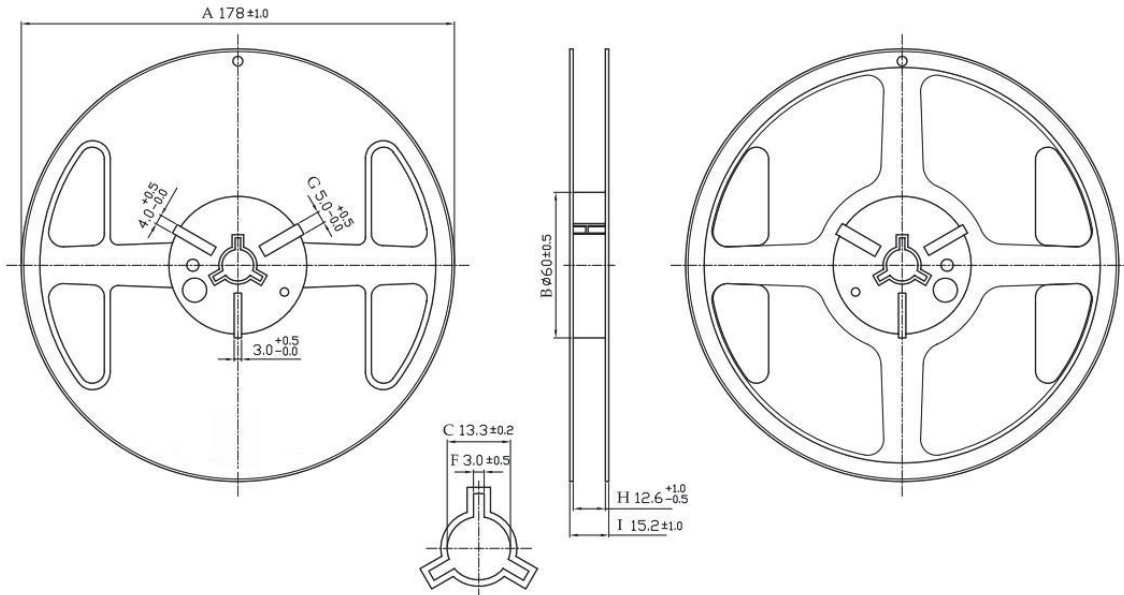


■ RECOMMENDED REFLOW PROFILE

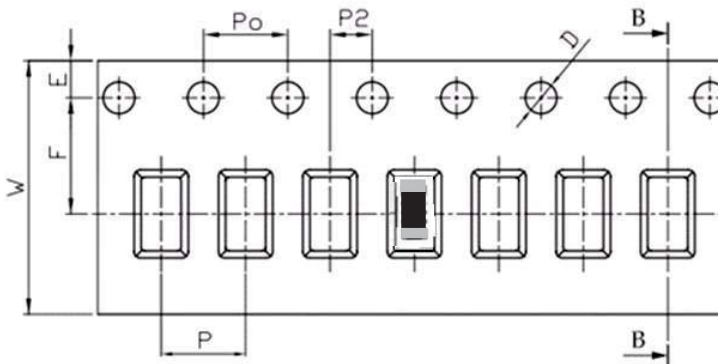


■ PACKAGING STYLE

□ REEL DIMENSIONS



□ TAPE DIMENSIONS



Feature	Specifications	Tolerances
W	8.00	±0.30
P	4.00	±0.10
E	1.75	±0.10
F	3.50	±0.10
P2	2.00	±0.10
D	1.50	+0.10 -0.00
P0	4.00	±0.10
10P0	40.00	±0.20

Typing Quantity: 5000 pieces per 7" reel



## Order Information

Device	Package	Net Weight	Carrier	Quantity	HSF Status
CS-2450-31-A	3216	0.0089g	Tape&Reel	5000pcs	RoHS compliant

## Revision history

Date	Revision	Description of changes
2018-11-5	1.0	First Version
2022- 8-5	1.1	Update the package information

The contents of this data sheet are subject to change without notice.  
Please confirm the specifications and delivery conditions when placing your order.

© Copyright 2015, Keweixin Electronics  
All rights reserved