

A background image of a water splash with ripples, centered on a blue gradient. The splash is captured in a way that shows the droplet just before it hits the surface, creating concentric ripples that spread outwards.

上海沅溯电子科技有限公司
Shanghai Sources-global Electronic Technology Co,. Ltd

2.4G Antenna Data sheet

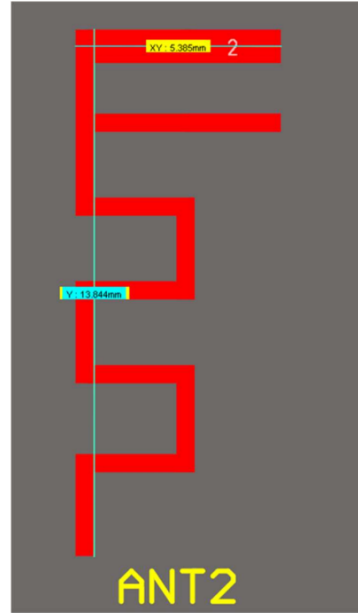
Version:V1

Author: Xu Shu Tong
Band: 2400~2500MHz
Date: 2023/10/26

List

1. Antenna information
2. Return loss
3. VSWR
4. Smith chart
5. Passive data
6. Radiation pattern

Picture

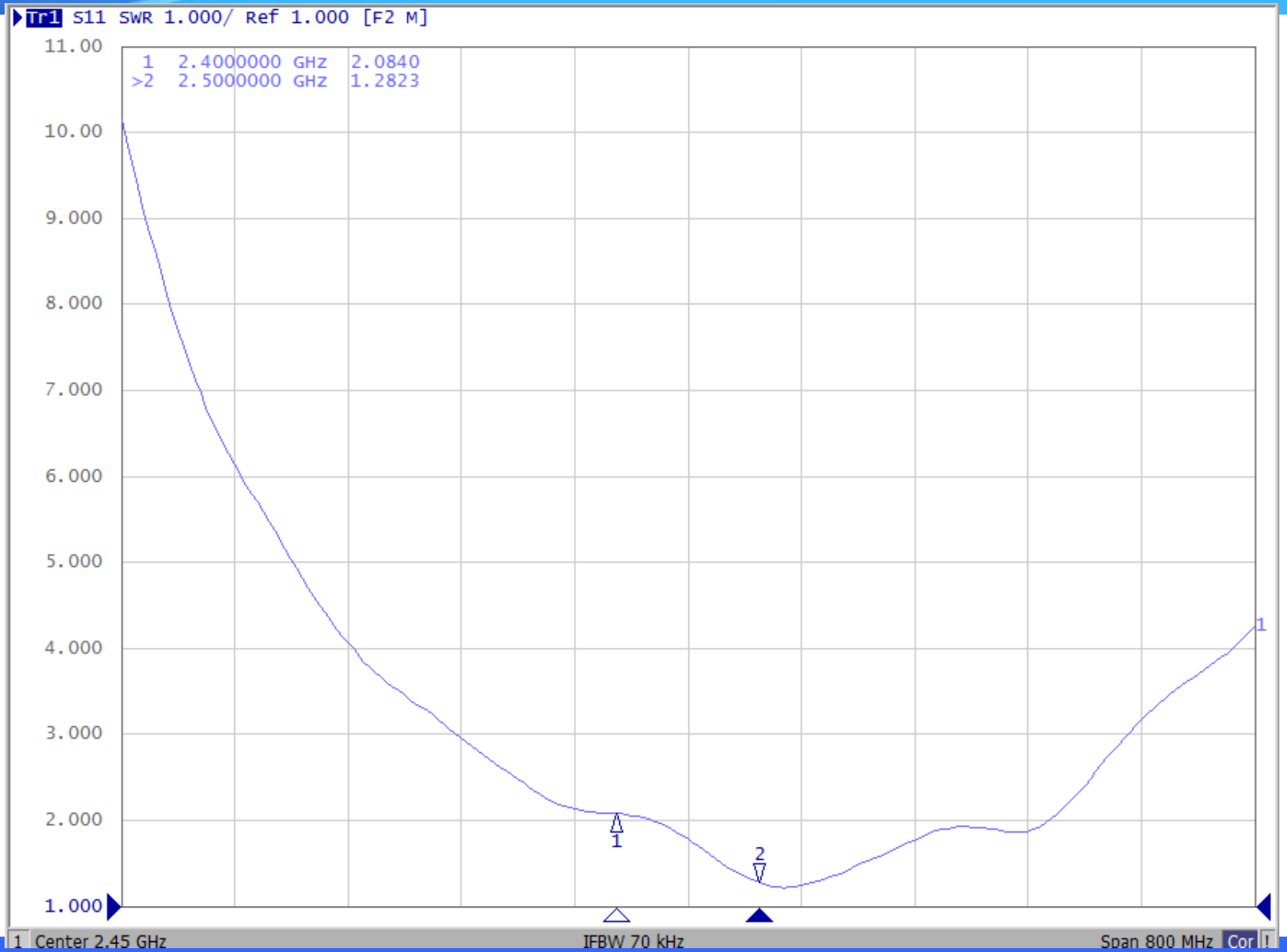


Antenna manufacturer	opple
Antenna type	onboard PCB

Return loss



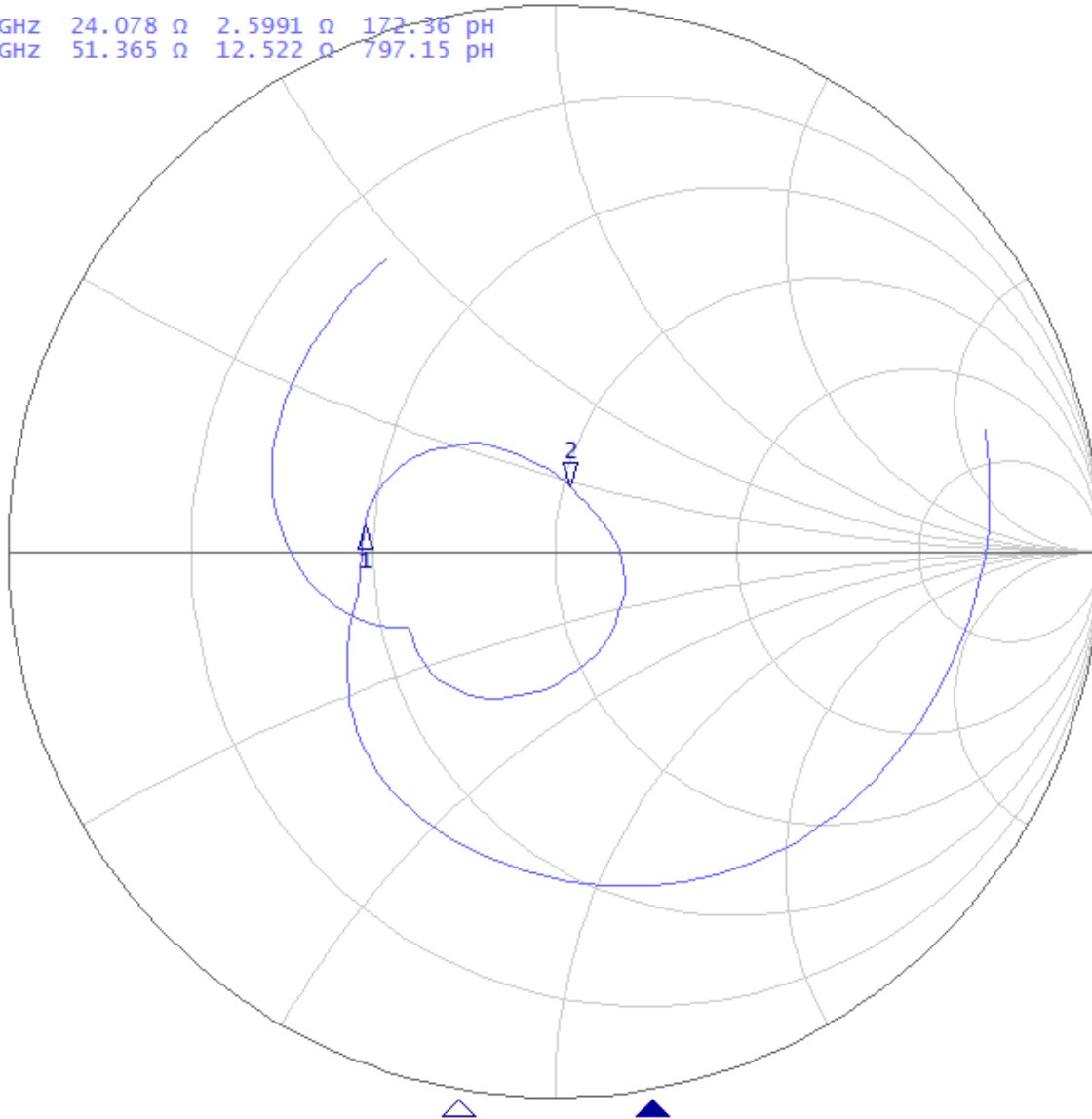
VSWR



Smith chart

▶ Tr1 S11 smith (R+jX) scale 1.000U [F2 M]

1	2.400000	GHZ	24.078	Ω	2.5991	Ω	172.36	pH
>2	2.500000	GHZ	51.365	Ω	12.522	Ω	797.15	pH



1 Center 2.45 GHz

IFBW 70 kHz

Span 800 MHz Cor |

Passive data

Frequency [MHz]	Gain[dBi]	Efficiency
2400	0.3	29.9%
2410	0.5	31.7%
2420	0.8	32.0%
2430	1.1	34.8%
2440	0.7	33.0%
2450	0.6	35.2%
2460	0.2	36.3%
2470	-0.1	37.6%
2480	0.1	41.0%
2490	0.4	43.2%
2500	0.4	45.0%

Radiation pattern

