



Wireless connected hybrid smart watch movement

QUICK GUIDE



Welcome to the Jaguar Connected family.
We are delighted to introduce you to a new
era of watchmaking. Please allow us to share
some important information with you.

F R A

Bienvenue dans la famille Jaguar Connected. Nous sommes heureux de vous faire entrer dans la nouvelle ère de l'horlogerie. Nous allons vous donner quelques informations importantes.

G E R

Willkommen in der Welt von Jaguar Connected. Wir freuen uns, Ihnen eine neue Generation von Uhren vorstellen zu dürfen. Hier sind einige wichtige Informationen für Sie.

E S P

Le damos la bienvenida a la familia Jaguar Connected. Estamos encantados de introducirle en una nueva era en la fabricación de relojes. Permítanos compartir con usted información importante.

I T A

Benvenuti nella famiglia Jaguar Connected. Siamo lieti di presentarvi una nuova era dell'orologeria e di condividere con voi alcune importanti informazioni.

S W E

Välkommen till Jaguar Connected-familjen! Vi är stolta över att få presentera en ny epok inom klocktillverkning. Först av allt vill vi gärna dela med oss av viktig information.

S L O

Dobrodošli v družini Jaguar Connected.
Z veseljem vam predstavljamo novo dobo urarstva.

Welcome to the **Jaguar Connected** family.

We are delighted to introduce you
to a new era of watchmaking.



1. Download the Jaguar Connected app
2. Connect and set up your watch

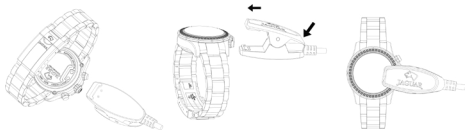
Manual

More information on how to use and configure your watch is available in the Jaguar Connected app.

Charging

A fully-charged watch has a battery life of up to 3 months, depending on usage. You will receive a notification on your phone when it's time to charge the watch.

To charge the watch, attach the charger as shown below. The watch will make a small vibration when it is properly connected to the charger and the sub dial will show battery percentage while charging. Charging the watch to 80% takes 2 hours, charging it fully takes 3.5 hours.



Important information

This product is not a medical device and should not be used to diagnose or treat medical conditions. Do not disassemble the watch, there are no serviceable parts inside the watch. Do not allow small children to play with the device as small parts may come loose and pose a choking hazard. Do not use this transmitting device near sensitive medical equipment without requesting permission. If you have electronic medical implants, do not use this device without consulting medical expertise first.

Batteries, WARNING

This watch uses a lithium-ion rechargeable battery. Do not remove or replace the battery. Risk of fire and burns. Do not disassemble, heat above 55°C or incinerate. Keep battery out of reach of children. Never put batteries in mouth. Swallowing may lead to serious injury or death. If ingested, immediately seek medical attention.

Radio frequency exposure

Your Jaguar Connected device is equipped with a radio transmitter and receiver of Bluetooth™ Low Energy type, operating in the frequency range 2400 to 2500 MHz. Its radiated output power is far below exposure limits set by national authorities such as the FCC, IC, European Council and international health agencies.



Waste Electrical and Electronic Equipment, WEEE

The symbol on the product or its packaging indicates that this product must not be disposed of with your other household waste. Instead, it is your responsibility to dispose of your waste equipment by handing it over to a designated collection point for the recycling of waste electrical and electronic equipment. The separate collection and recycling of your waste equipment at the time of disposal will help conserve natural resources and ensure that it is recycled in a manner that protects human health and the environment. For more information about where you can drop off your waste for recycling, please contact your local authority, or where you purchased your product.



EC Declaration of Conformity

We, FESTINA LOTUS SA, of C/Velázquez nº 150, 3º 1ª 28002 Madrid (Spain) declare under our sole responsibility that our product Jaguar Connected watch of model FKS 927 is in conformity to the essential requirements and other relevant requirements of the RE Directive: EN 55032:2015+A11:2020, EN 55035:2017+A11:2020, ETSI EN300 328 V2.2.2, ETSI EN301 489-1 V2.2.3, ETSI EN301 489-17 V3.2.4, EN62479:2010, EN62368 (Safety) RoHS 10: IEC 62321-4:2013+A1:2017, IEC 62321-7-2:2017, IEC 62321-6:2015, IEC 62321-8:2017, IEC 62321-5:2013.

Barcelona, October 2022

Carlos Díaz, Legal

For declaration of conformity, please go to <https://festinagroup.com/certification/>

FCC Declaration of Conformity

FCC ID:2A8P6-FKS927

This device complies with part 15 of the FCC Rules. Operation is subject to the following two conditions:

(1) This device may not cause harmful interference, and (2) this device must accept any interference received, including interference that may cause undesired operation.

Any Changes or modifications not expressly approved by the party responsible for compliance could void the user's authority to operate the equipment.

Note: This equipment has been tested and found to comply with the limits for a Class B digital device, pursuant to part 15 of the FCC Rules. These limits are designed to provide reasonable protection against harmful interference in a residential installation. This equipment generates uses and can radiate radio frequency energy and, if not installed and used in accordance with the instructions, may cause harmful interference to radio communications.

However, there is no guarantee that interference will not occur in a particular installation.

If this equipment does cause harmful interference to radio or television reception, which can be determined by turning the equipment off and on, the user is encouraged to try to correct the interference by one or more of the following measures:

- Reorient or relocate the receiving antenna.
- Increase the separation between the equipment and receiver.
- Connect the equipment into an outlet on a circuit different from that to which the receiver is connected.
- Consult the dealer or an experienced radio/TV technician for help.

*** RF warning for Portable device:**

The device has been evaluated to meet general RF exposure requirement. The device can be used in portable exposure condition without restriction.

Industry Canada statement

IC:28851-FKS927

CAN ICES-003(B)/NMB-003(B)

RSS-Gen Issue 3 December 2010" & "CNR-Gen 3e édition Décembre 2010:

- English:

This device complies with Industry Canada licence-exempt RSS standard(s).

Operation is subject to the following two conditions:

(1) This device may not cause interference, and (2) This device must accept any interference, including interference that may cause undesired operation of the device.

- French:

Le présent appareil est conforme aux CNR d'Industrie Canada applicables aux appareils radio exempts de licence.

L'exploitation est autorisée aux deux conditions suivantes:

(1) l'appareil ne doit pas produire de brouillage, et (2) l'utilisateur de l'appareil doit accepter tout brouillage radioélectrique subi, même si le brouillage est susceptible d'en compromettre le fonctionnement.