

107mm

107mm

T2

HELMET  
BLUETOOTH INTERCOM

Quick operation guide



Function Current state Operate Voice prompt

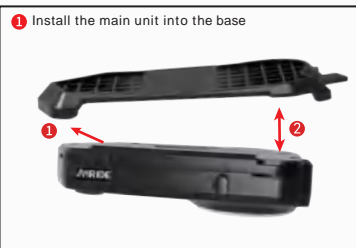
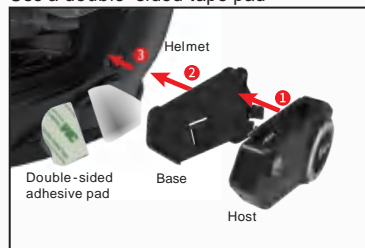
Function	Current state	Operate	Voice prompt
Equipment start	Power on	[T] [M] [V]	Ai ride with you
	Power off	[T] [M] [V]	Thanks for using, bye
	Charging	[TYPE-C]	/
	Power to detect	[T] [M] [V]	Voice prompt of battery power
Bluetooth	Bluetooth pairing	[T] [V]	Matching state
	Answering calls	[T] [V]	/
	Hang up	[T] [V]	/
	Refuse calls	[T] [V]	/
	Redial of last number	[T] [V]	/
	Turn up call volume	[+]	du
	Turn down call volume	[-]	du
	Voice assistant	[M] [V]	/
	Switch manual/automatic answering	[T] [M] [V]	Turn on auto Answer Turning off Auto Answer

Function Current state Operate Voice prompt

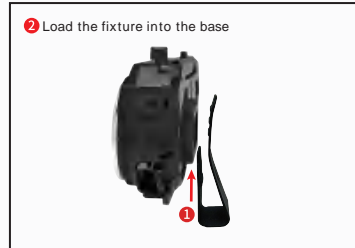
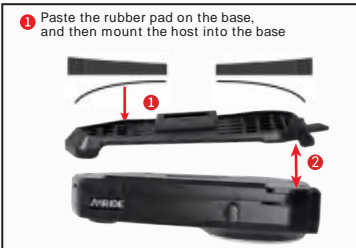
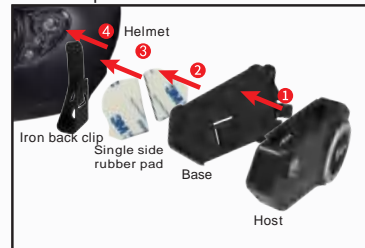
Music function	Play music	[▶]	[T] [V]	/
	Pause the music	[⏸]	[T] [V]	/
	Play previous music	[⏮]	[T] [V]	du
	Play next music	[⏭]	[T] [V]	du
	Turn up volume	[▶]	[+]	du
	Turn down volume	[⏮]	[-]	du
The function of clearing memory	Clear Bluetooth pairing	[X]	[T] [+]	Clear Bluetooth pairing
	Clear Mesh networking records	[X]	[M] [+]	Clear Mesh networking records
Bluetooth intercom	Enter the network intercom state	[⏻]	[T] [V]	Matching state
	Start the bluetooth intercom network	[X]	[T] [V]	search
	Open intercom	[📶]	[T] [V]	/
	Close intercom	[📶]	[T] [V]	/
	Turn up intercom volume	[📶]	[+]	/
	Turn down intercom volume	[📶]	[-]	/
Bluetooth intercom	Open Mesh	[⏻]	[M] [V]	Open Mesh
	Close the Mesh	[X]	[M] [V]	Close the Mesh
	Start Mesh networking	[⏻]	[M] [V]	Start Mesh networking MESH networking is successful
	Turn up intercom volume	[📶]	[+]	du
	Turn down intercom volume	[📶]	[-]	du
	Multichannel mixing	MESH intercom networking + Bluetooth music playback:	[📶] [▶]	[T] [V]
MESH intercom networking + Bluetooth intercom networking:		[📶] [📶]	[T] [V]	

Description for installation

Use a double-sided tape pad



Use clamp



Follow the official wechat account for more information



CityGo WeChat



Airide WeChat



Airide Trill



This APP (Apple)



This APP (Android)



Install the demonstration



Function demonstration

Factory address: Fuyuan Industrial City, Hangcheng Street, Baoan District, Shenzhen, China  
Contact: 0755-21508589

This device complies with Part 15 of the FCC Rules. Operation is subject to the following two conditions: (1) this device may not cause harmful interference, and (2) this device must accept any interference received, including interference that may cause undesired operation

NOTE: This equipment has been tested and found to comply with the limits for a Class B digital device, pursuant to Part 15 of the FCC Rules. These limits are designed to provide reasonable protection against harmful interference in a residential installation. This equipment generates, uses and can radiate radio frequency energy and, if not installed and used in accordance with the instructions, may cause harmful interference to radio communications. However, there is no guarantee that interference will not occur in a particular installation.

If this equipment does cause harmful interference to radio or television reception, which can be determined by turning the equipment off and on, the user is encouraged to try to correct the interference by one or more of the following measures:

- Reorient or relocate the receiving antenna.
- Increase the separation between the equipment and receiver.
- Connect the equipment into an outlet on a circuit different from that to which the receiver is connected.
- Consult the dealer or an experienced radio/TV technician for help.

Warning: changes or modifications not expressly approved by the party responsible for compliance could void the user's authority to operate the equipment

The device has been evaluated to meet general RF exposure requirements, the device can be used in portable exposure condition without restriction