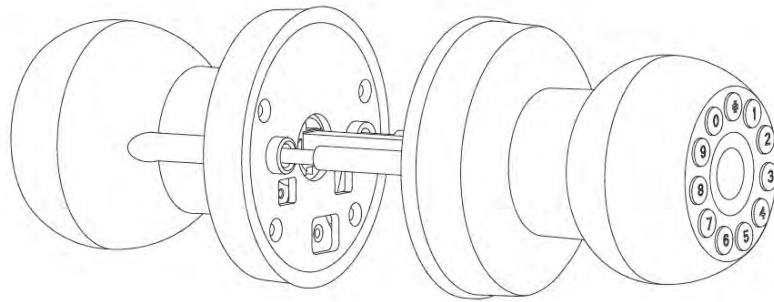


# INSTRUCTION MANUAL



Installation  
Video

Powered by



Setting  
Video

Before installing the smart lock, please read this manual carefully,  
and keep it in a safe place, for future reference.

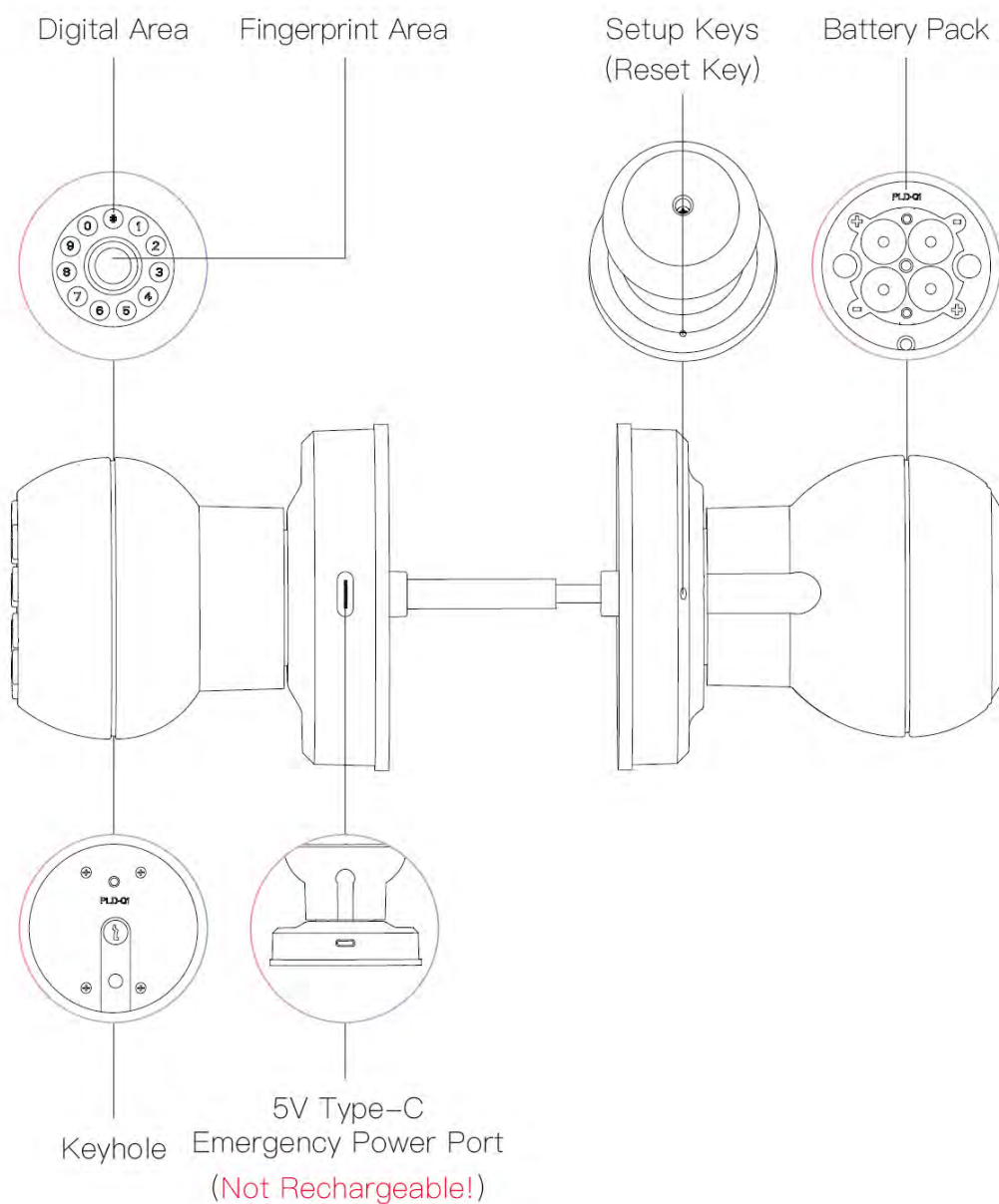
# TABLE OF CONTENTS

<b>PRODUCT OVERVIEW</b> .....	01
<b>DOOR LOCK SCHEMATIC</b> .....	02
Attachment.....	02
<b>INSTALLATION TUTORIAL</b> .....	03
1、Top View Of Door Opening Direction.....	03
2、Measuring The Door.....	04
3、Installation Of Buckle Box And Buckle Plate.....	04
4、Adjustment Of Latch.....	05
5、Installing Latch.....	06
6、Installation Of Door Locks.....	06
7、Use Of Locking Caps.....	10
<b>USING THE TUYA APP</b> .....	11
1、App Registration And Login.....	11
2、Add Bluetooth Door Locks.....	12
3、Bluetooth Door Lock Home.....	13
4、Temporary Password Creation And Deletion.....	14
5、Member Management–Administrator Add.....	16
6、Member Management–Ordinary Members Added.....	17
7、Fingerprint Management.....	18
8、Password Management.....	20
9、Normally Open Mode And Antilock Setting.....	21
10、Deletion Of Family Members.....	22
11、Open Door Record And Equipment Alarm.....	23
12、Restore Factory Settings.....	24
<b>LOCAL OPERATION SETTINGS</b> .....	25
1、Add Fingerprint.....	25
2、Add Password.....	26
3、Volume Adjustment.....	26
4、Virtual Password.....	27
<b>DOOR LOCK USE GUIDE</b> .....	28
1、Open/Close Lock.....	28
2、Quick Entry.....	28
3、Password Unlocking.....	28
4、Key Unlocking.....	29
5、Automatic Locking.....	29
6、“Normally Open” Mode Setting.....	29
7、Forced Initialization.....	30
8、Emergency Power Supply.....	30
<b>PRODUCT PARAMETERS</b> .....	31

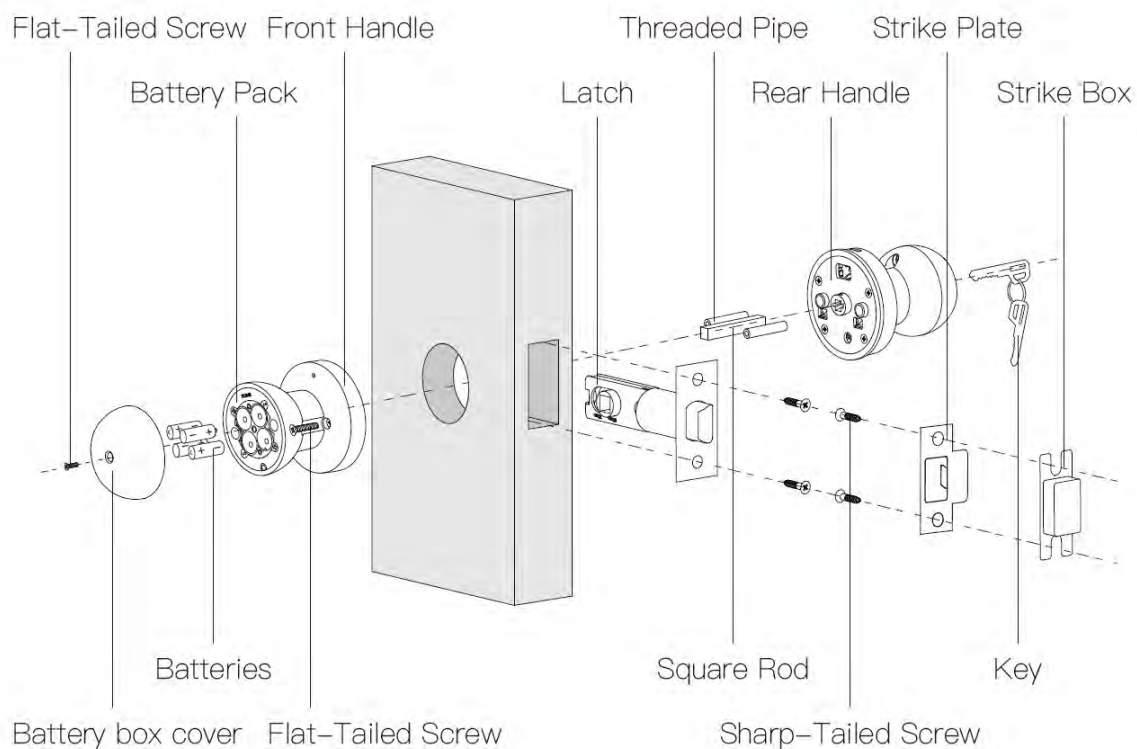
# PRODUCT OVERVIEW

## Front Handle

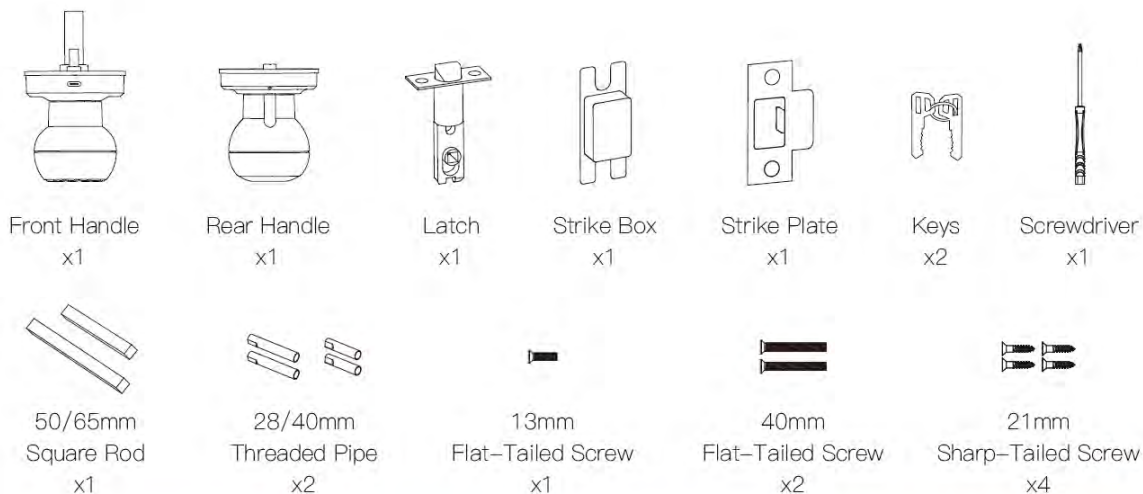
## Rear Handle



# DOOR LOCK SCHEMATIC



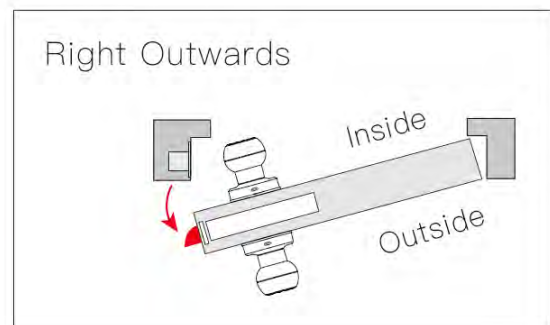
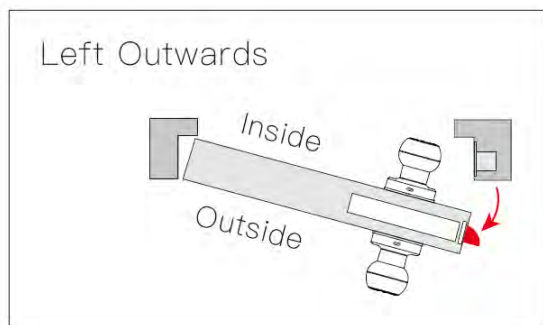
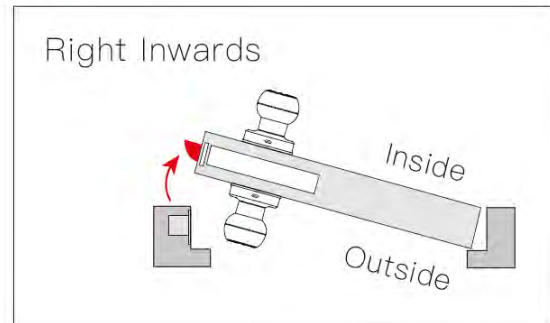
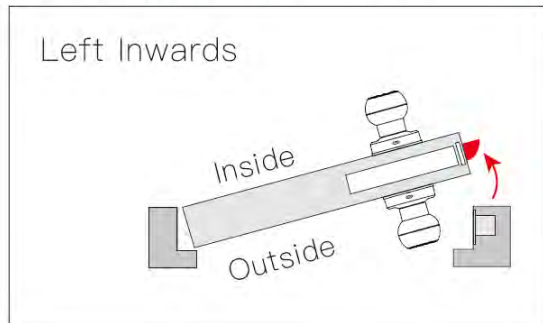
## Attachment



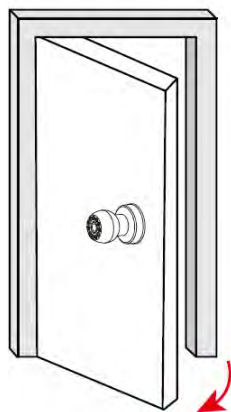
⚠ When unpacking, check that the above accessories are included.

# INSTALLATION TUTORIAL

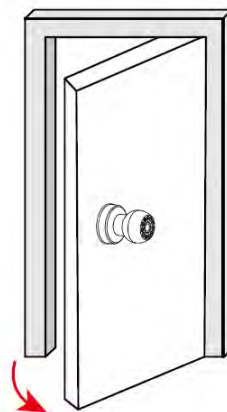
## 1、Top View Of Door Opening Direction



Open the door with your left hand

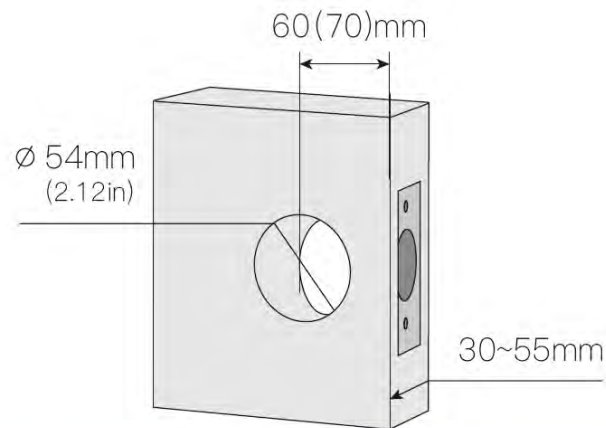


Open the door with your right hand



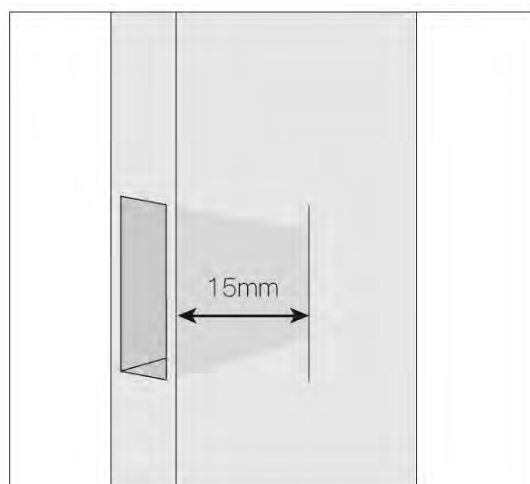
## 2、Measuring The Door

Thickness of door 30~55mm, diameter of door opening 54mm (2.12in), distance from lock body to back of bolt 60(70)mm.

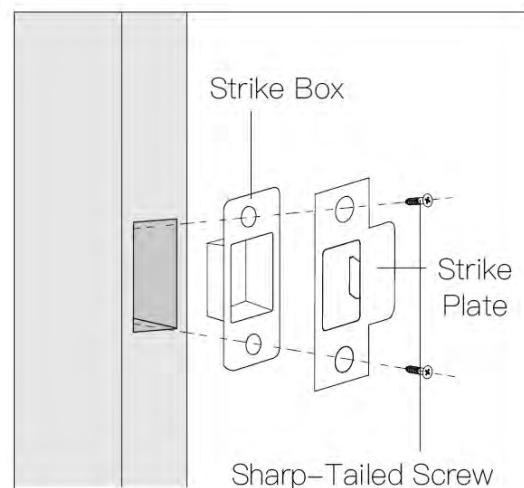


⚠ Suitable for 30~55mm thick doors, if over this range, please contact us for more information!

## 3、Installation Of Buckle Box And Buckle Plate



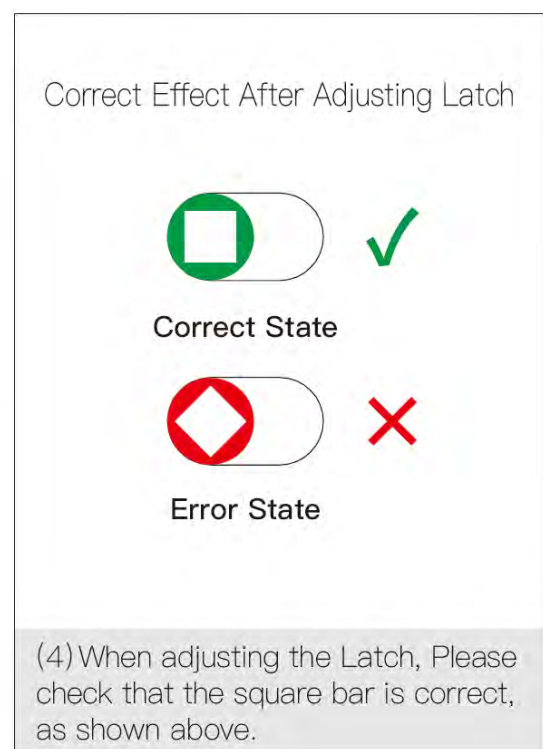
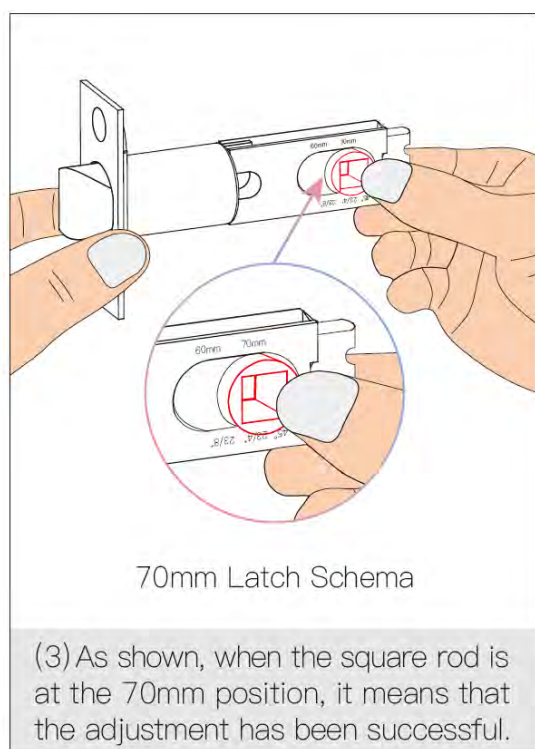
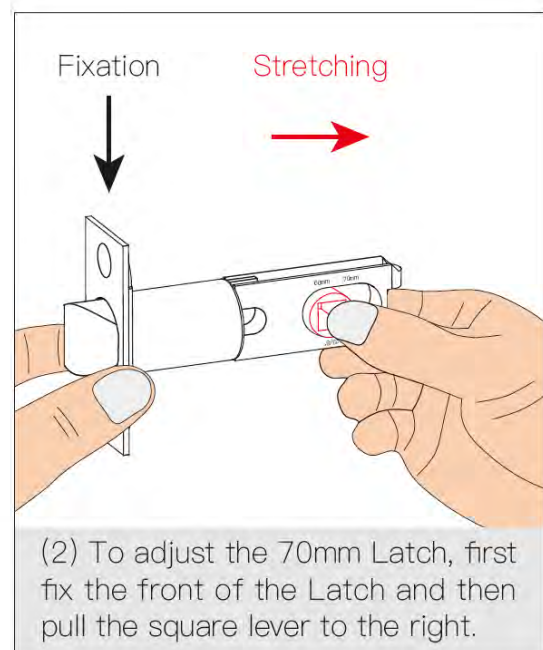
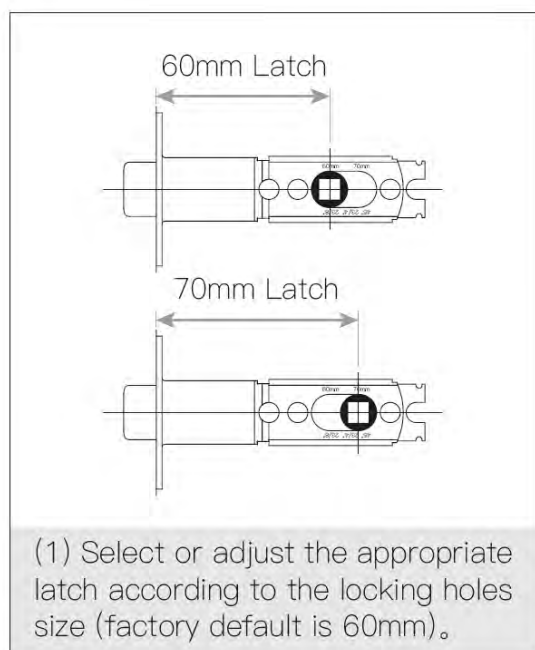
(1) Drill the holes to a minimum depth of 15mm to allow Latch space for the cam to fit.



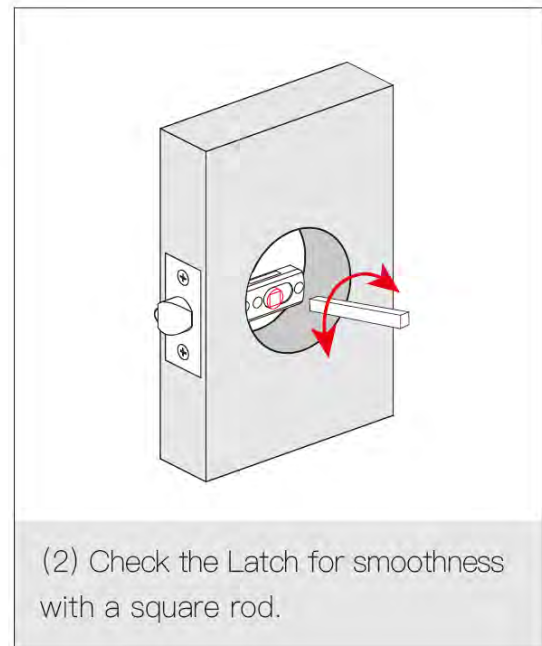
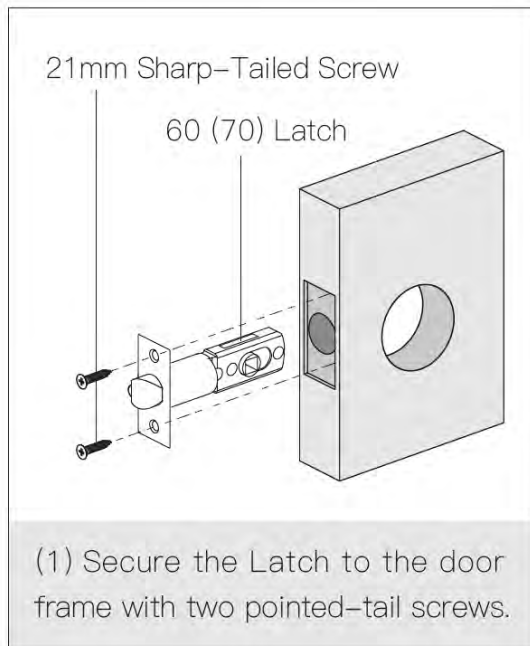
(2) Secure the Strike Box and Strike Plate to the door frame with two screws.



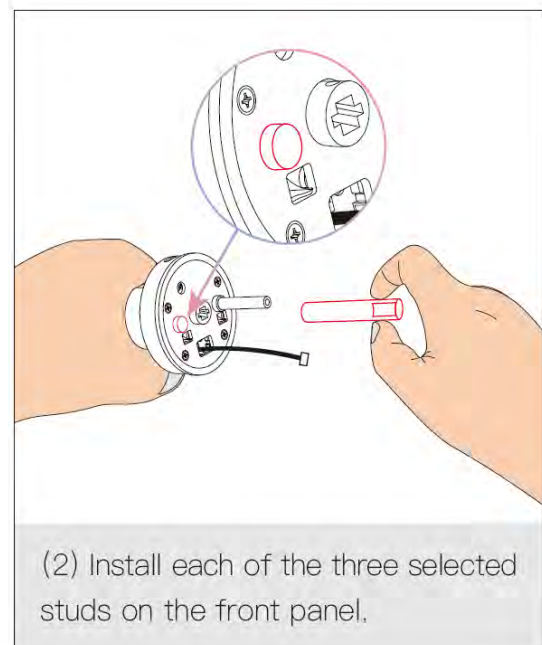
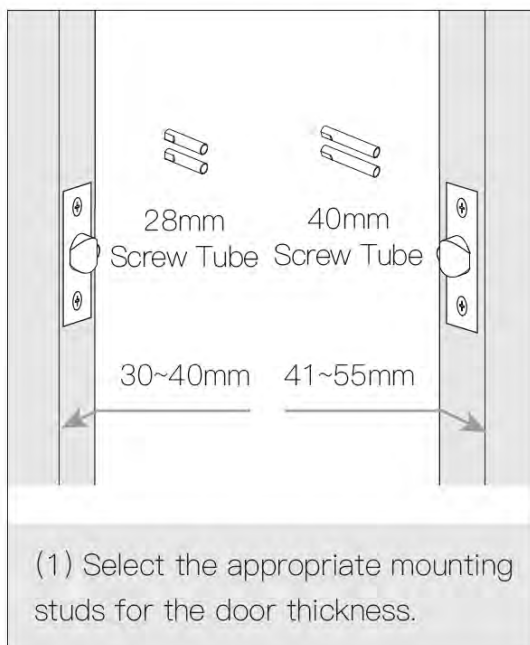
## 4、Adjustment Of Latch



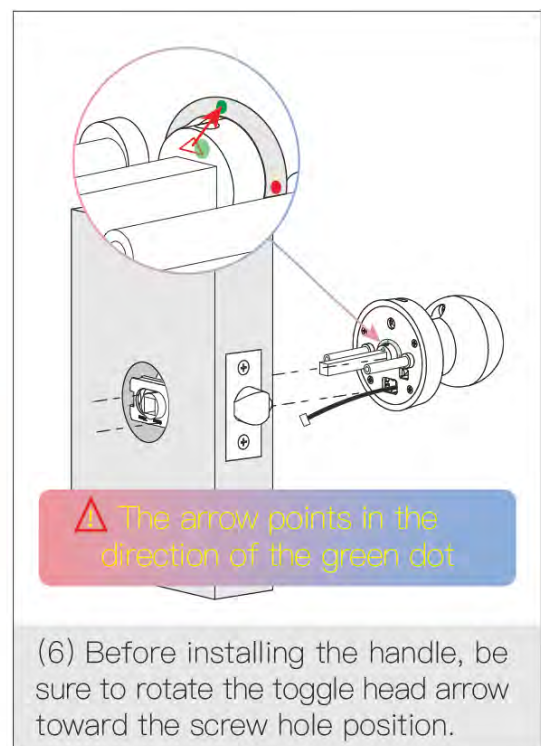
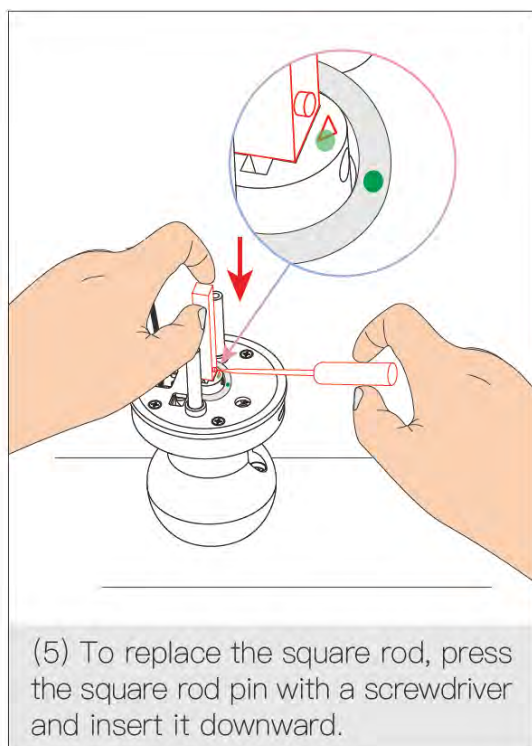
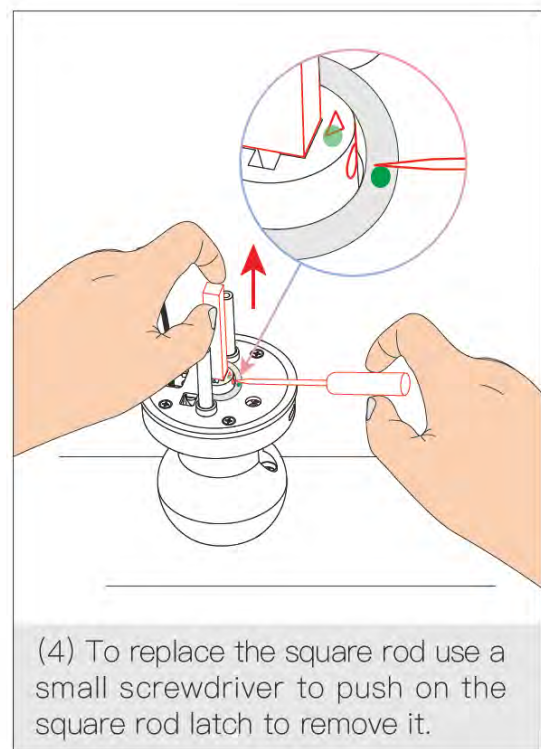
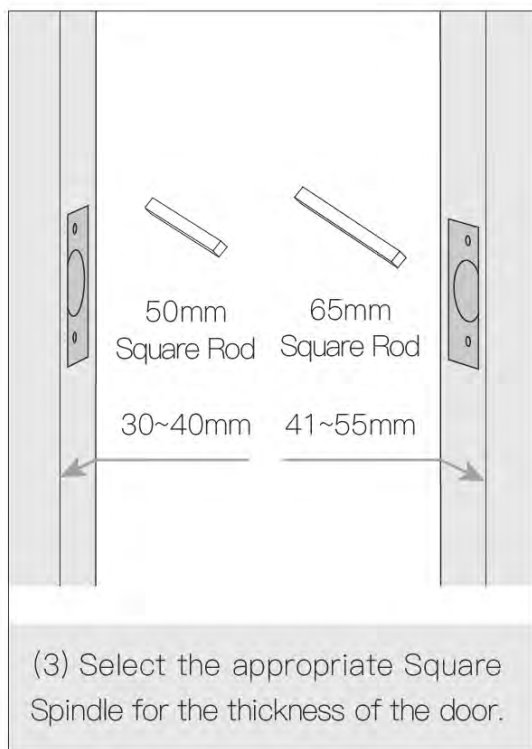
## 5、Installing Latch



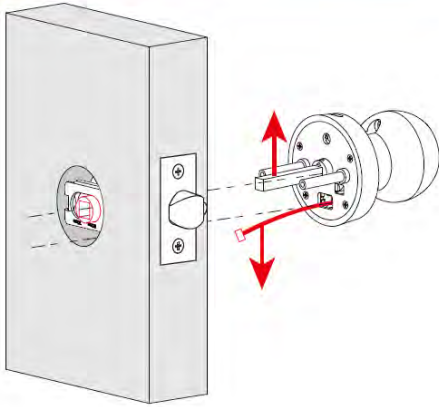
## 6、Installation Of Door Locks



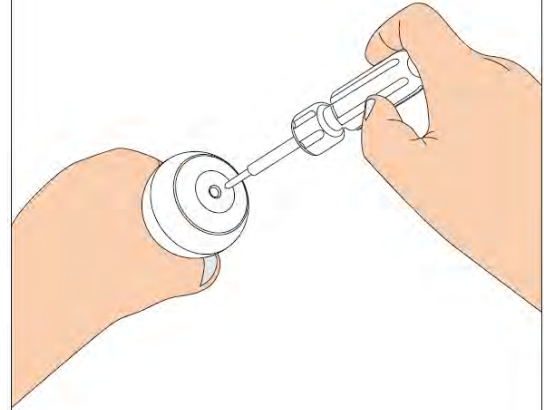




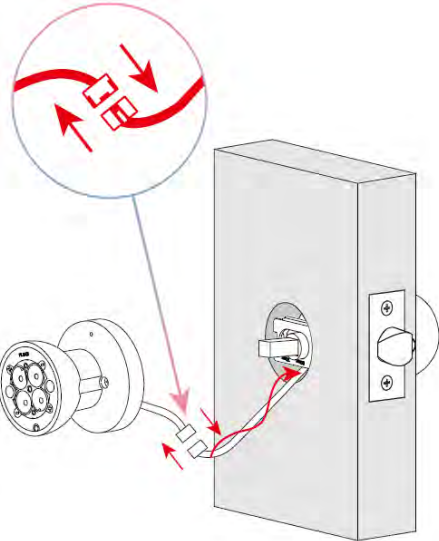
⚠ Pay attention to the direction of insertion.



(7) Align the door hole and pass the handle through the latch (the main cord passes under the latch).

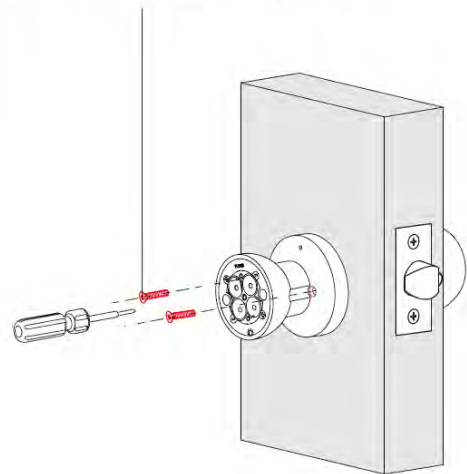


(8) Unscrew the screw at the end of the rear handle with a screwdriver and remove the battery cover.

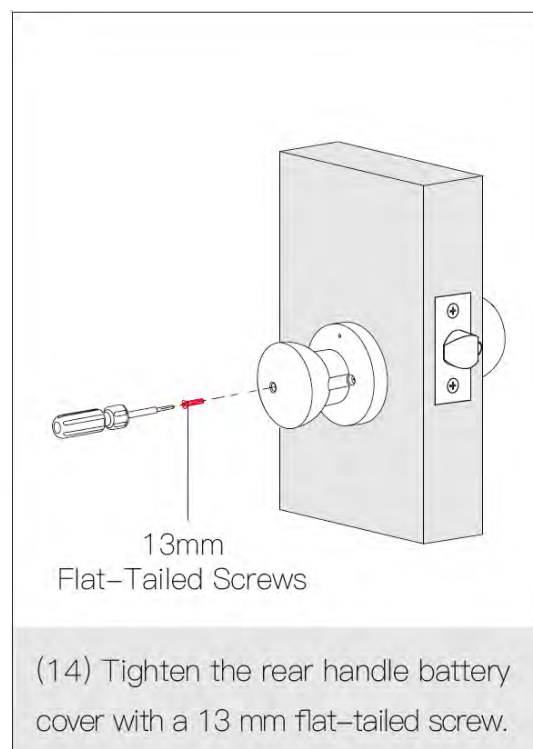
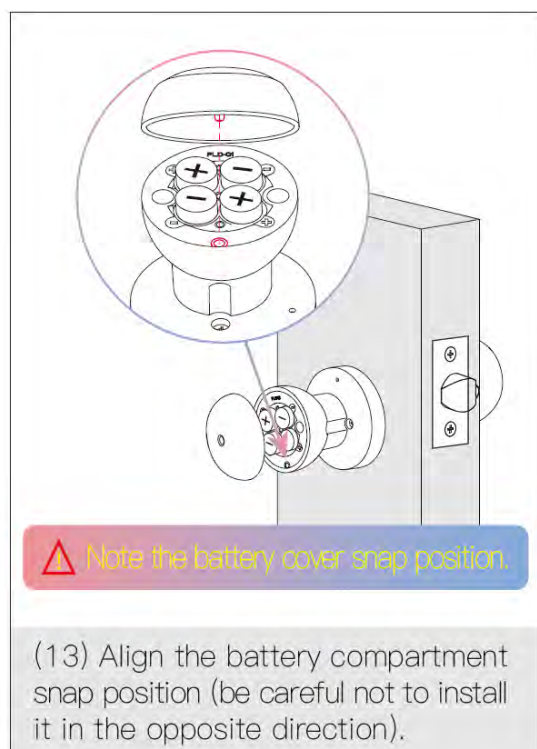
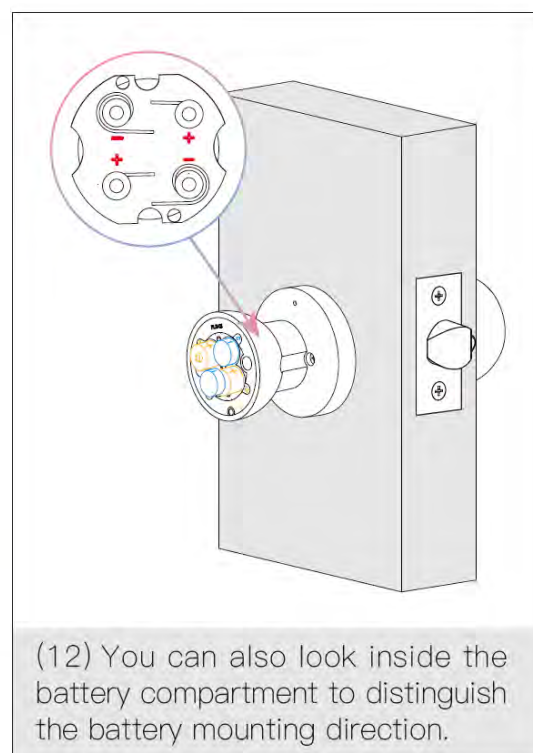
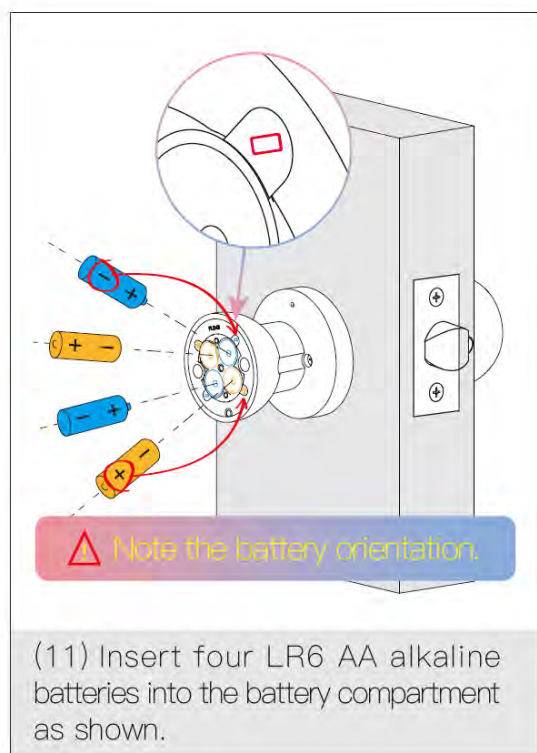


(9) Insert the main cord and tuck it back into the door frame below the latch and fasten the rear handle.

40mm Flat-Tailed Screws

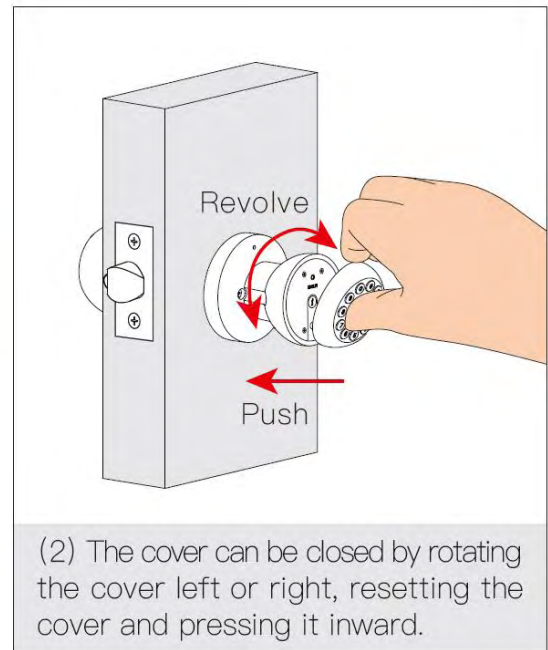
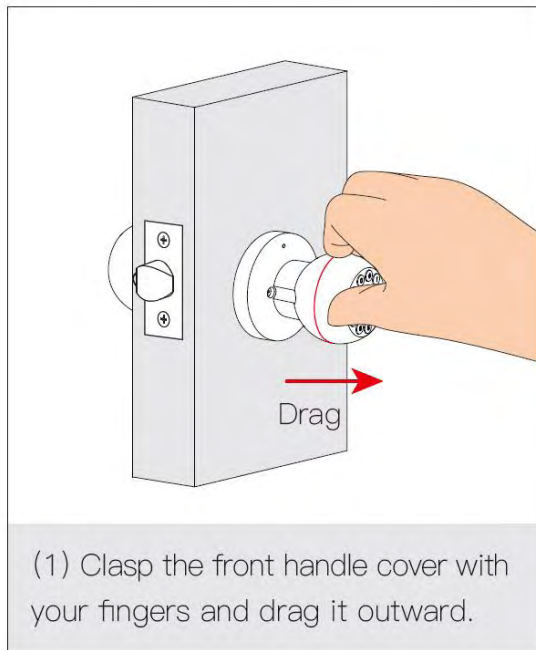


(10) Tighten the rear handle with two 40mm flat-tailed screws.





## 7、Use Of Locking Caps



### **⚠ Caveat**

- When installing the door lock, make sure the wires are not pinched.
- The rotating parts of the lock body must operate smoothly and flexibly.
- Choose good quality alkaline batteries and make sure all 4 are new.
- This lock requires a key to unlock the door, which is kept in a safe place so that it can be used at any time.
- Replace the battery in case of low voltage alarm, different models and old and new batteries should not be mixed.
- Do not expose to sunlight or water, this lock is not IP rated.
- Keep your fingers clean and dry when using this lock.
- When using the Bluetooth APP on your cell phone, please keep within an effective distance of 5~10 meters from the door lock.

# USING THE TUYA APP

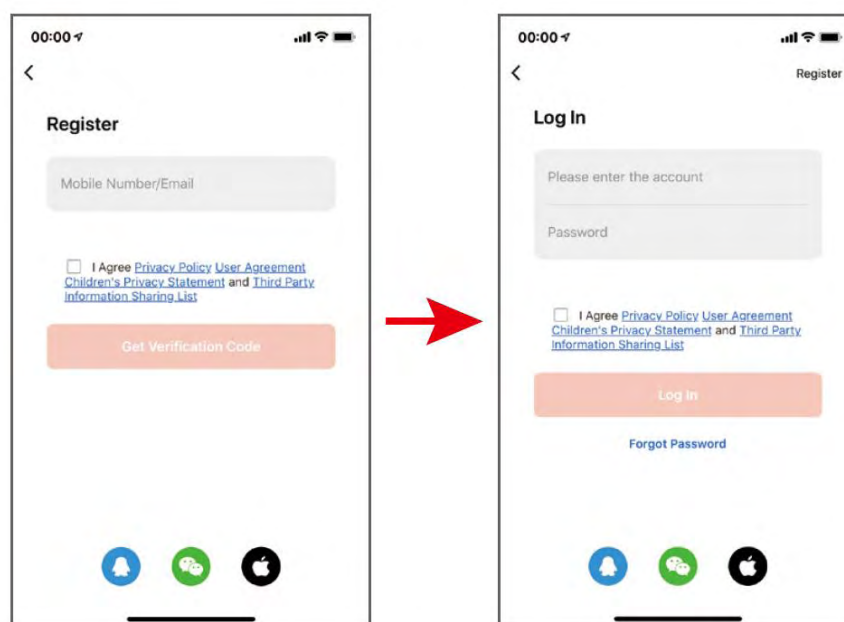


“Tuya Intelligent” App is the intelligent management app provided by Tuya to end consumers. Through Tuya App, you can conveniently configure and control your whole-house intelligent products, configure your favorite scenarios and automation programs, share your intelligent devices with your family and friends, and enjoy the fun of whole-house intelligence.

Get the App: Search for “Tuya Smart” in Android App Market or Apple Store or scan the QR code on the left to download.

※This document takes Smart Life App as an example, and explains in detail the functions of Graffiti App door lock panel and the tutorial of using it.

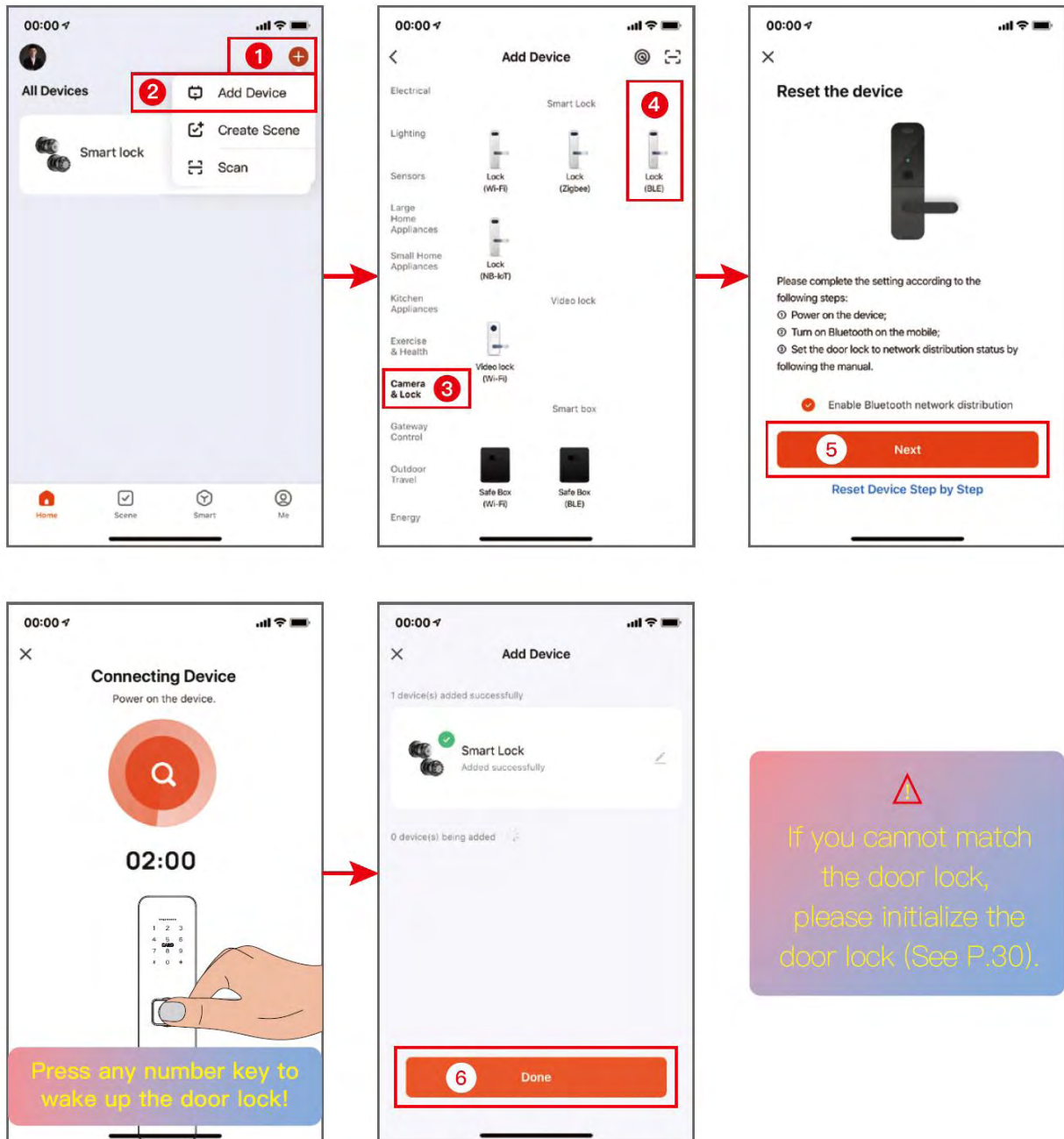
## 1、App Registration And Login



- (1) No account: choose to register or login via SMS verification code.
- (2) Click **【Create New Account】**, enter the account registration page, press the prompts to get the SMS verification code, set the password.
- (3) Existing Account: Click **【Use Existing Account】** to log in the app, support password, CAPTCHA, social account login.

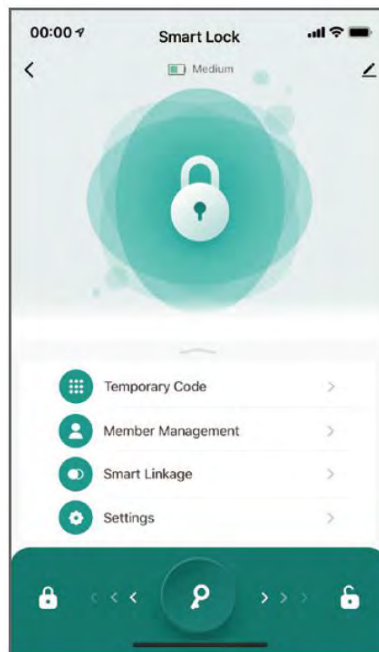


## 2、Add Bluetooth Door Locks (Bluetooth must be enabled on your phone first)



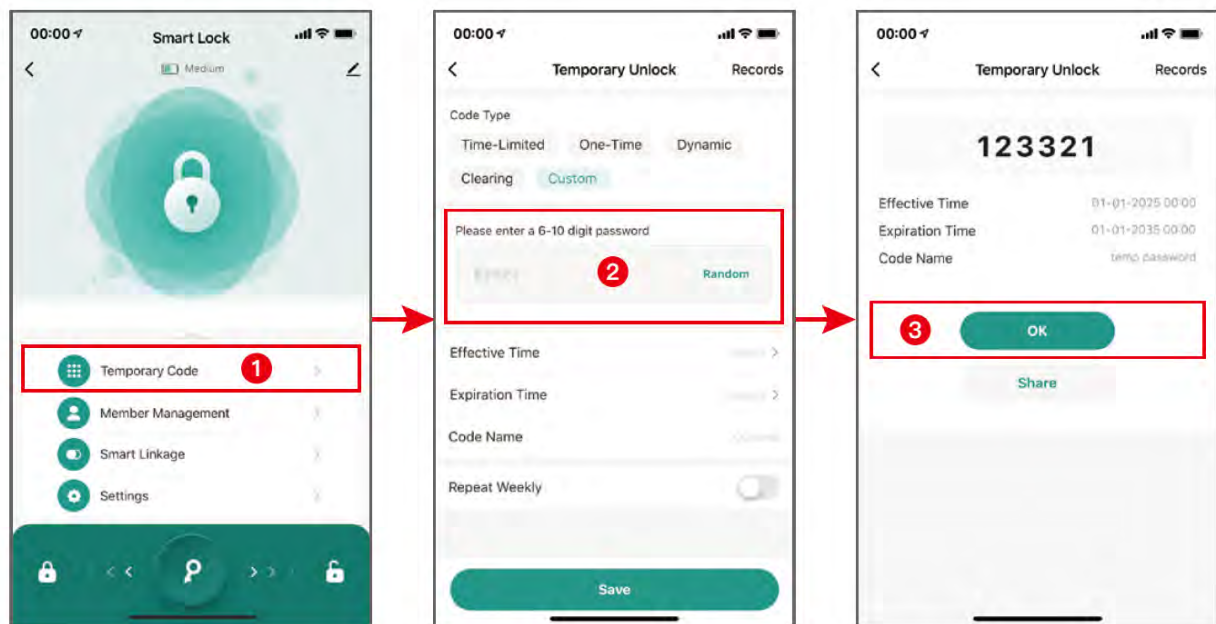
- (1) In the App home page, click **【Add Device】** icon;
- (2) touch the number keys to wake up the door lock, wait for the phone to scan the device to select **【Add】** , press the **【+】** icon to add the device;
- (3) wait for the device to be added, and the smart lock interface appears to indicate that it has been added successfully.

### 3、Bluetooth Door Lock Home

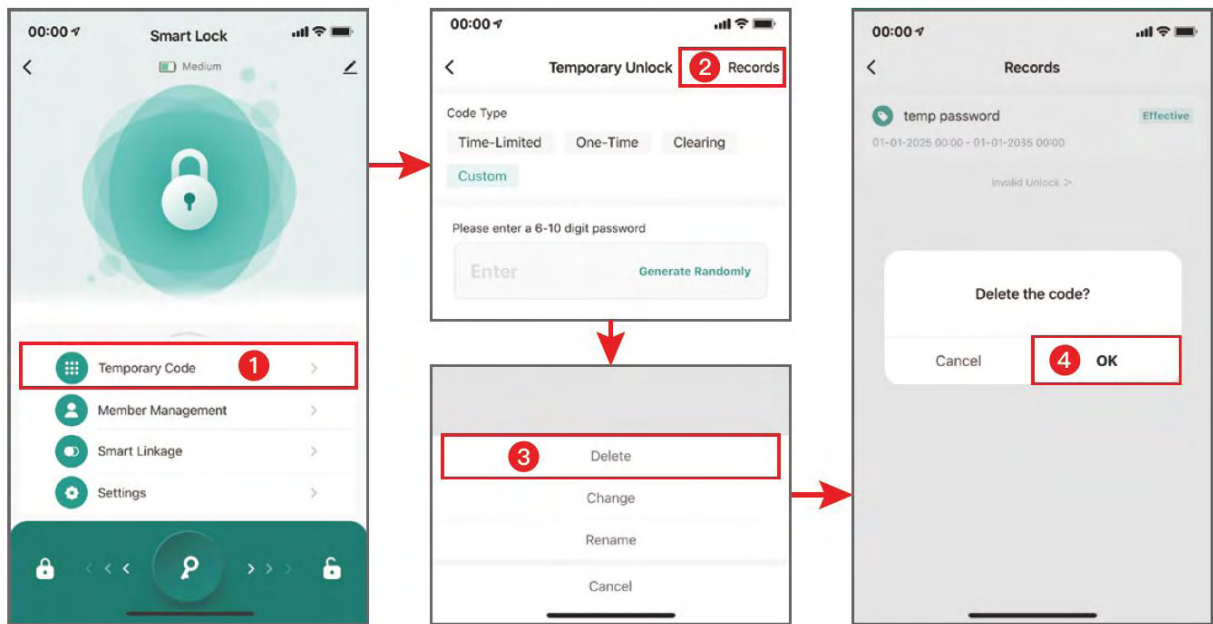


- (1) At the top of the homepage is the name of the device and its current battery status, and the bottom of the homepage contains **【Door Opening Record】** , **【Temporary Code】** , **【Member Management】** , **【Smart Linkage】** , and **【Settings】** , and so on.
- (2) The center of the home page shows the Bluetooth connection status, if it is connected, you can slide to the right **【→】** to open the lock directly, and slide to the left **【←】** to close the lock (make sure that the Bluetooth of the cell phone has been turned on, and it is recommended to do it within 5 meters). If Bluetooth is not connected, it shows that Bluetooth cannot be connected (cannot open Bluetooth in App).

## 4、Temporary Password Creation And Deletion



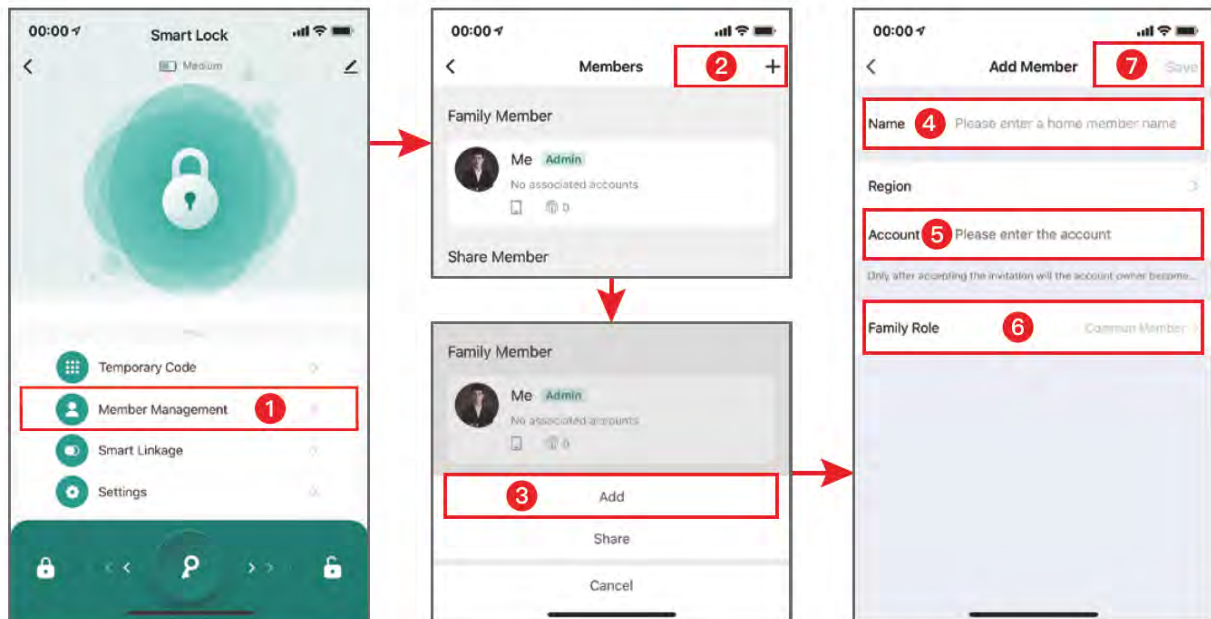
- (1) Click the **Temporary Code** icon on the home page of the app.
- (2) Enter the **Temporary Unlock** interface, select the password type and enter the 6~10 digit password (*cannot enter the same or consecutive digits, e.g.: 000000 or 123456*).
- (3) Select the effective time and expiry time and enter the password name.



- (1) Click the **【Temporary Code】** icon on the home page of the app.
- (2) Enter the **【Temporary Unlock】** creation interface, select **【Records】** in the upper right corner to enter the history of **【Temporary Code】** records.
- (3) Select the **【Delete】** option and click **【OK】** Delete **【Temporary Code】** .



## 5、Member Management–Administrator Add

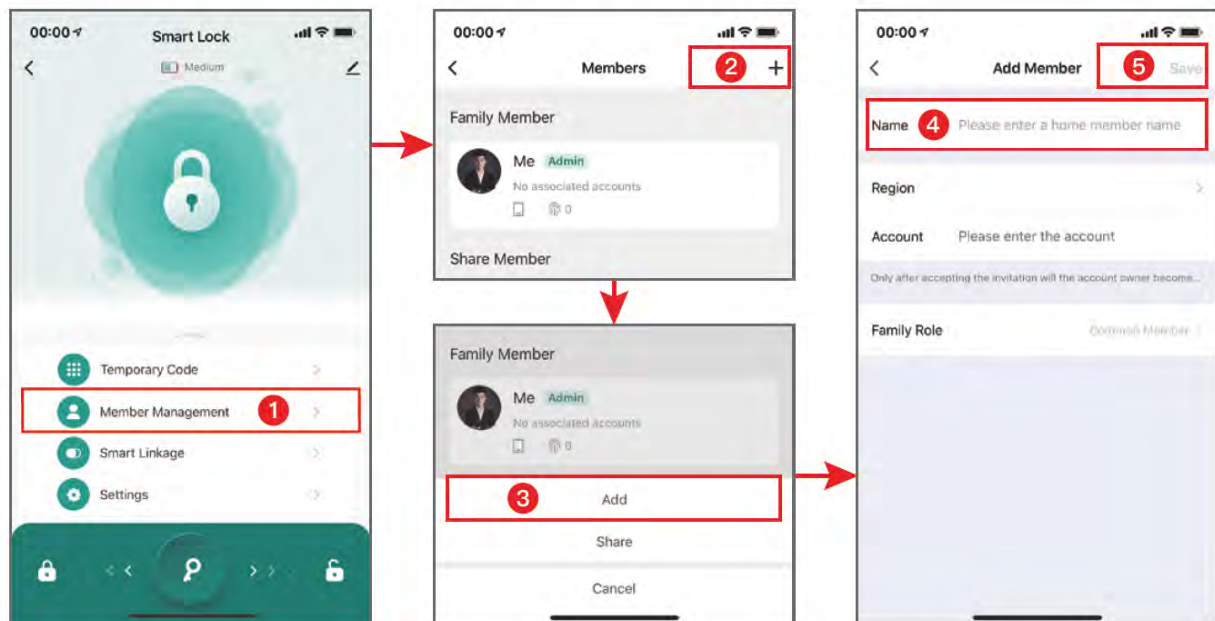


- (1) Click the **+** in the upper right corner of the **Member Management** portal, select **Add Member** , enter the member name and Tuya account, select the permissions and click **Save** to add the administrator user (Note: the added administrator account must be a registered Tuya account, otherwise it will not be able to add will not be able to add).
- (2) When the added account opens the Tuya App, it will receive an invitation message, and after agreeing to it, it will have the right to manage the device.

**⚠ Users who add accounts will all default to administrator privileges.**



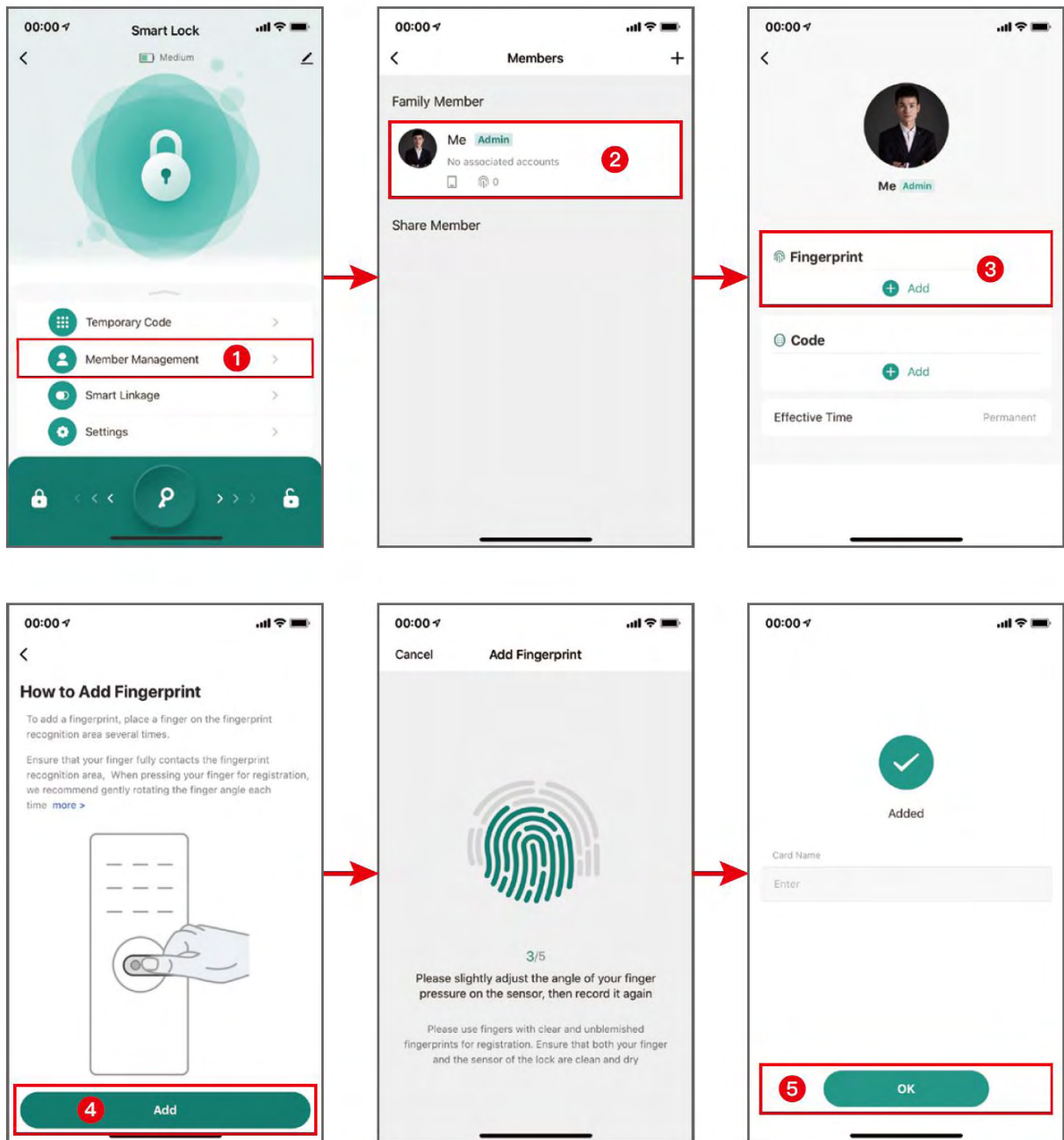
## 6、Member Management–Ordinary Members Added



Click **+** in the upper-right corner, select **Add Member**, enter the member name, no need to enter the account number, and click save to add a general member user.

**⚠** Users who add accounts have normal user permissions by default.

## 7、Fingerprint Management



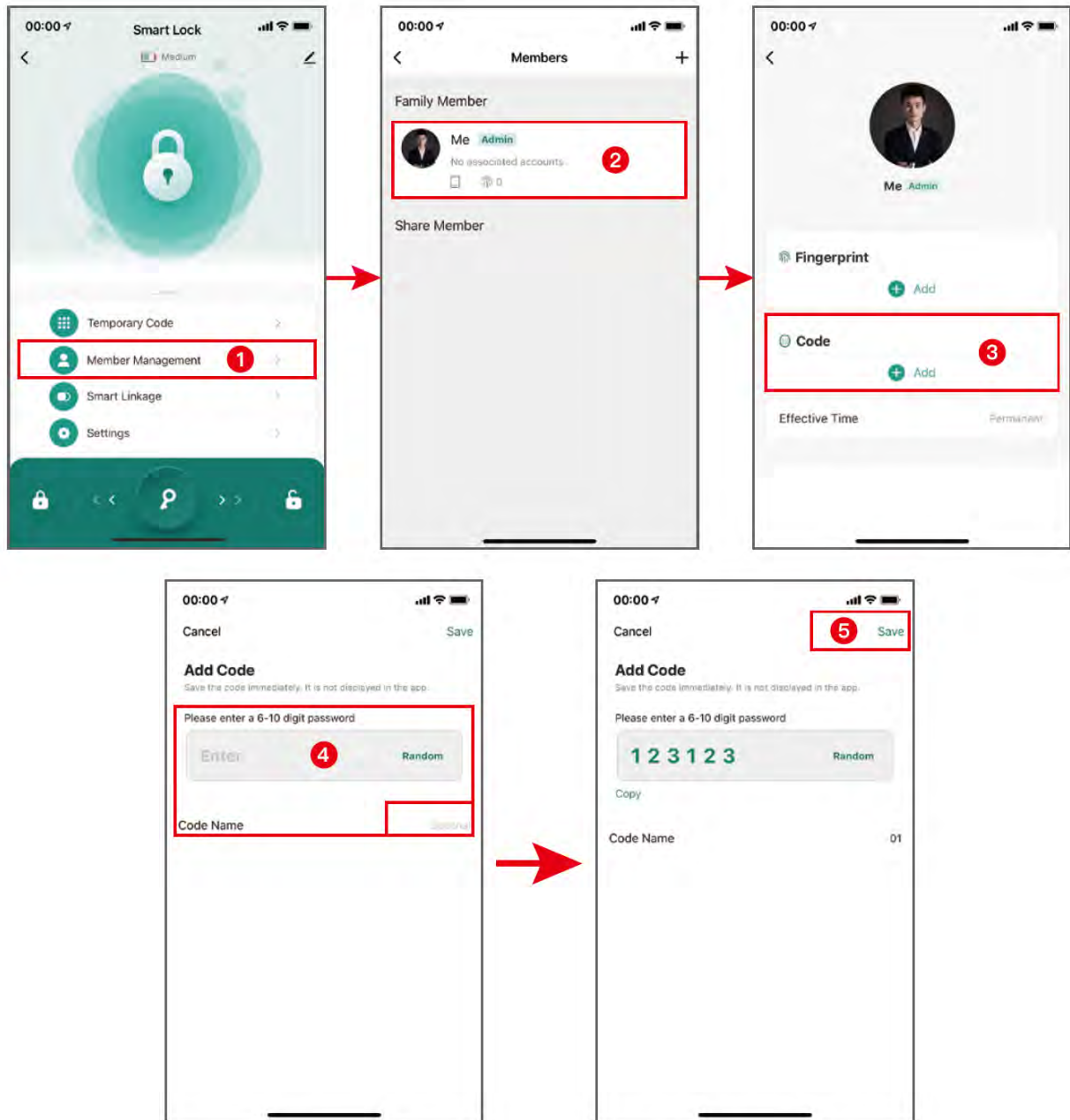


⚠ Complete entry of five fingerprint areas with 99.9% success rate!

- The belly of the finger is used to make the entry, not the fingertip.
- The same fingerprint needs to be scanned from multiple angles.
- Multiple fingerprints can be scanned for the same user.
- Please keep your finger clean, not too dry or too wet.

- (1) Home **【Member Management】** select the **【Family Member】** account with corresponding privileges (**Note: Affiliated administrators will have administrator privileges, and affiliated ordinary members will have ordinary user privileges**).
- (2) Click **【Start Capture】** to enter the fingerprint capture interface, press the fingerprint green light to let go, each fingerprint needs to be captured 5 times, the indicator light is off, the fingerprint capture is successful.
- (3) By connecting the door lock via Bluetooth via the App, the administrator can take fingerprints for himself or other family members.
- (4) Fingerprint unlocking: green light for successful authentication, red light for failed authentication.

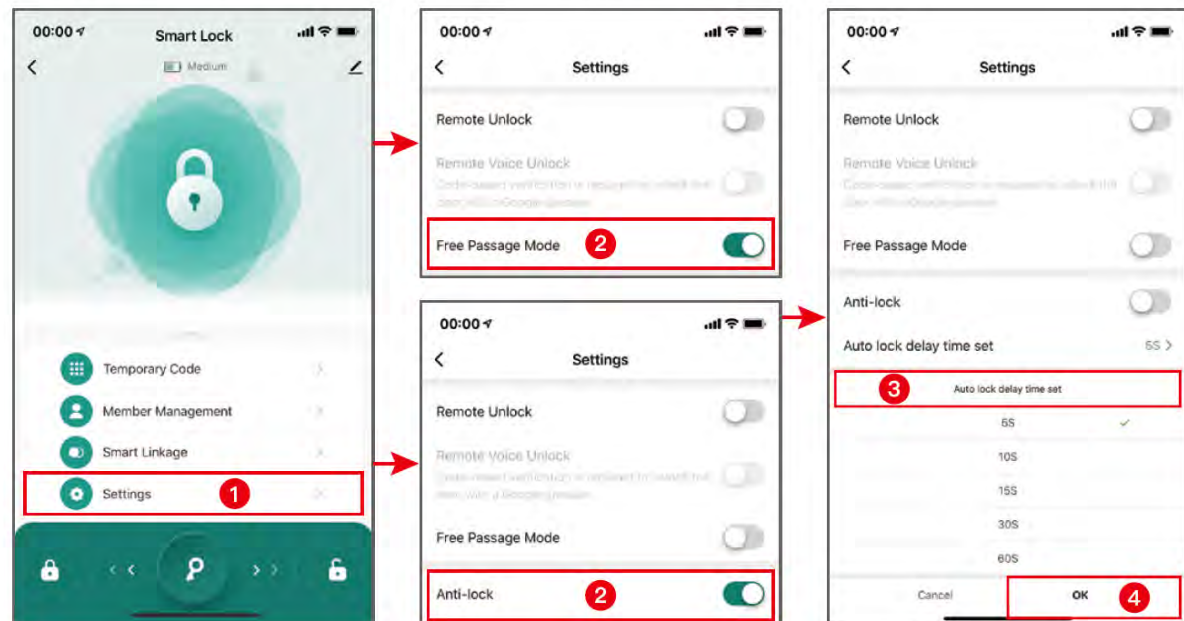
## 8、Password Management



- (1) **【Member Management】** portal, select the **【Family Member】** account with the corresponding privileges (Affiliated administrators will have administrator privileges, and affiliated ordinary members will have ordinary user privileges).
- (2) Click **【Add Code】** and enter 6~10 digits of your password (not the same number or consecutive numbers, e.g. 000000 or 123456).



## 9、Normally Open Mode And Antilock Setting

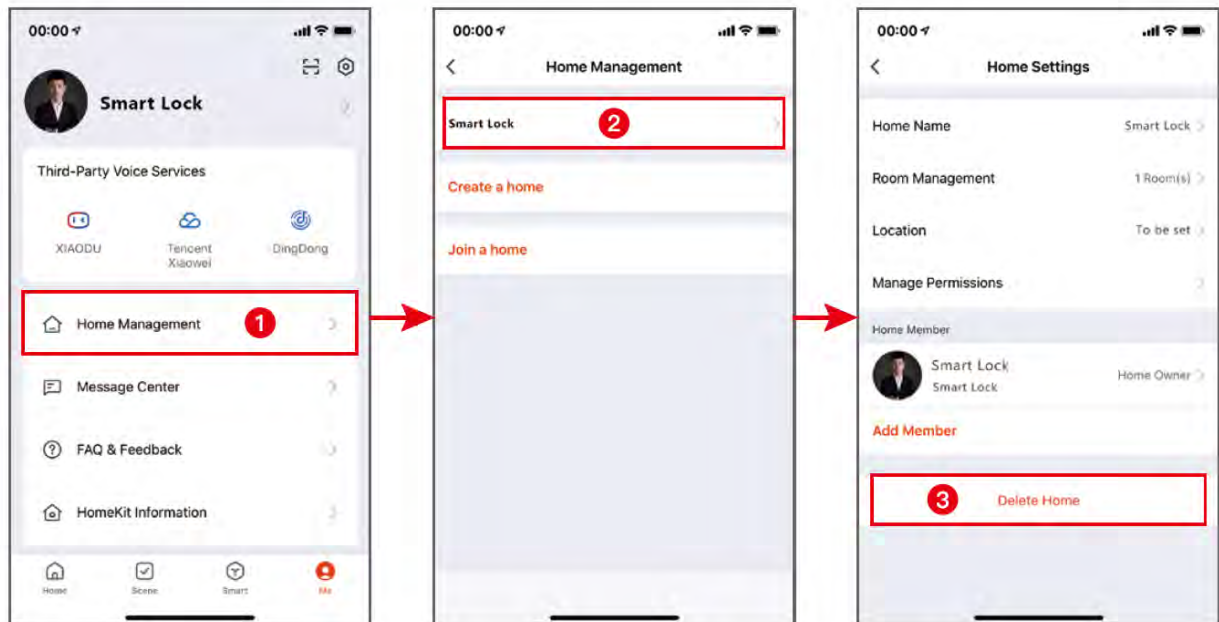


- (1) Slide **【Settings】** at the bottom of the home page and select **【On】** or **【Off】** in **【Free Passage Mode】**. When **【Free Passage Mode】** is turned on, the door lock will not be locked and you can enter and exit anytime. When the user verifies the fingerprint, **【Free Passage Mode】** is turned off by default. You can also turn off **【Free Passage Mode】** in the application or slide the door lock **【←】** to the left to turn off **【Free Passage Mode】**.
- (2) **【Settings】** at the bottom of the homepage, select **【On】** or **【Off】** in **【Anti-lock】** when the door lock is opened and unlocked, only the administrator can unlock the door, ordinary members can not unlock the door. After the administrator has unlocked the door, **【Anti-lock】** will be closed by default (you can also close **【Anti-lock】** in the app).
- (3) **【Auto lock delay time set】**, you can choose the auto lock time according to your own needs, after successful verification, the door lock will be automatically closed according to the time.

⚠ **【Free Passage Mode】** and **【Anti-lock】** can not be opened at the same time, open **【Anti-lock】**, **【Free Passage Mode】** will be automatically closed. When **【Free Passage Mode】** is turned on, **【Anti-lock】** will also be turned off.

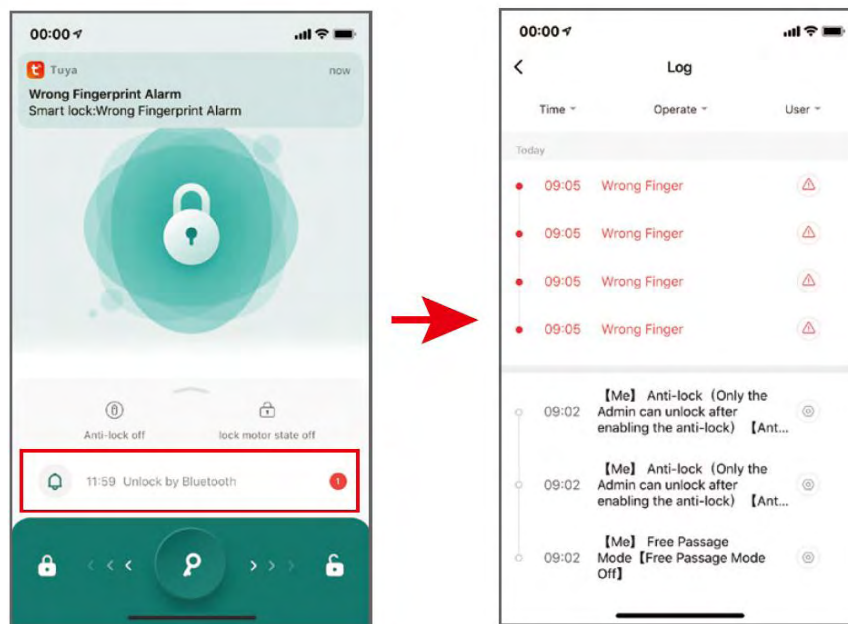


## 10、Deletion Of Family Members



Click **【Me】** → **【Home Management】** in the lower right corner, and select a family to delete or change the access rights of the added family members.

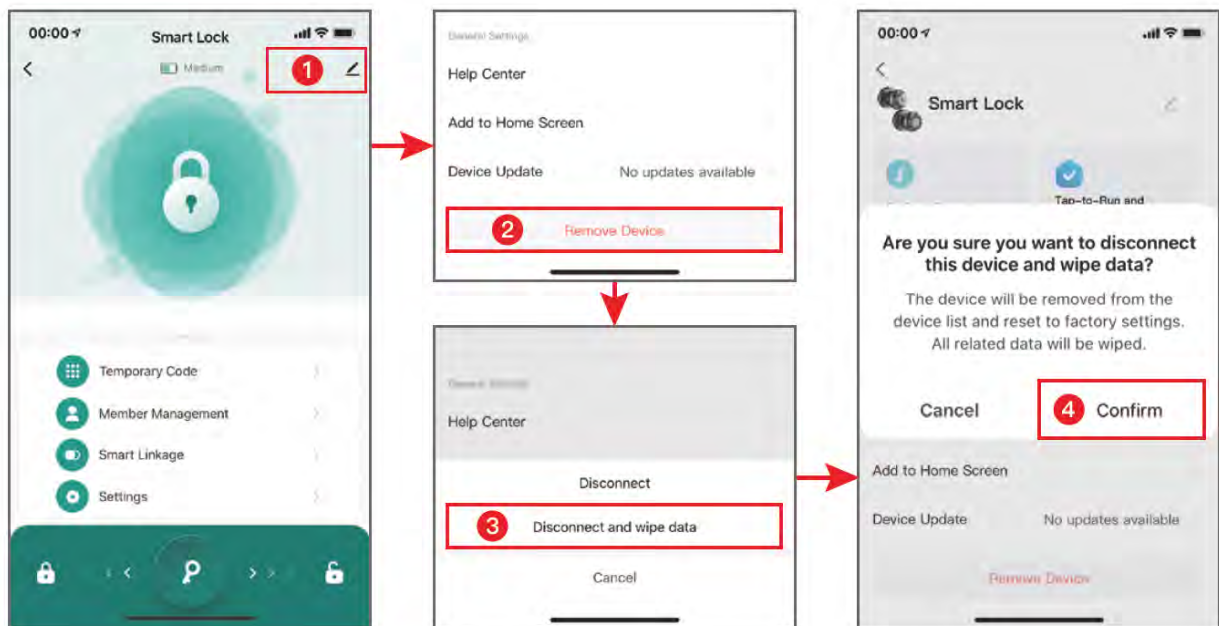
## 11、Open Door Record And Equipment Alarm




Tap the 【🔔】 icon to view information such as door opening records and trial-and-error alarms.

Note: When the door lock is connected to the phone's Bluetooth, the open door records and alarms will be displayed on the App in real time, otherwise the records will be cached locally in the door lock, waiting for the next time the door lock is connected to the phone's Bluetooth and opens the door for retransmission.

## 12、Restore Factory Settings



Click the【】icon at the top right corner of the main page,  
and enter the interface. Find【Remove Device】,  
select【Unbind and Erase Data】.

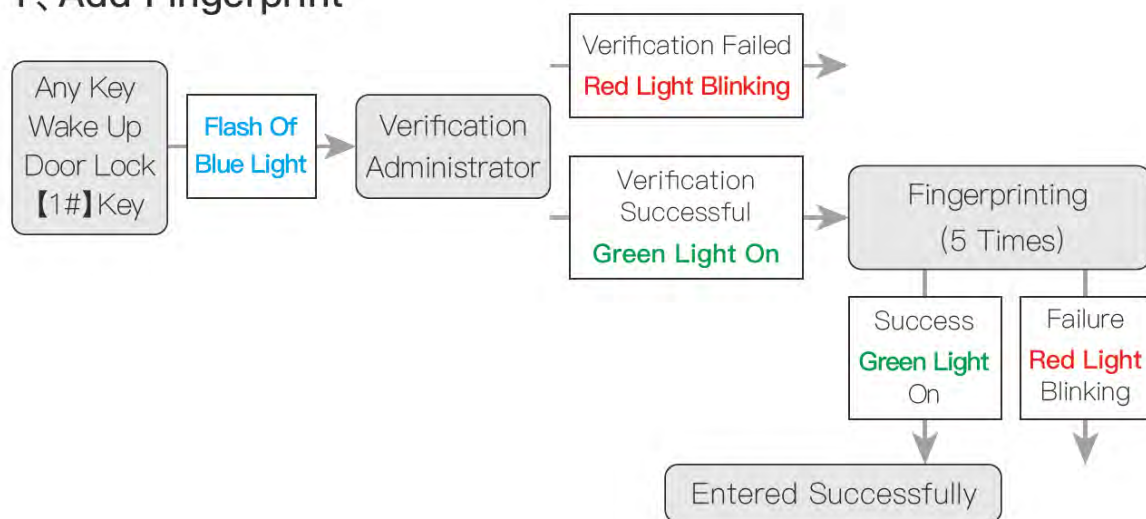
- (1) When the cell phone App is in Bluetooth connection with the door lock, use the Restore Factory Settings operation, all the local door opening methods of the door lock will be cleared, the door lock will be restored to the factory state, and other users can also re-match the door lock through the App.
- (2) When the mobile phone does not have Bluetooth connection with the door lock, restore the factory settings on the mobile phone App, the door lock will still retain the door opening data unaffected. Other users can re-pair with the door lock through the App, after re-pairing, all the original data on the door lock will be invalid.

# LOCAL OPERATION SETTINGS

All users entered in the lock default to Administrator and are automatically associated with the “Homeowner” account, if you need to register a regular member, you will need to do so in the app. If the administrator is already recorded in the lock, re-verification is required. When no user is registered, the product is in experience mode and any fingerprint can unlock the lock. When a user is registered, illegal fingerprints cannot unlock the lock.

\* Do not use local operation programming unless necessary, it is more convenient to use the App!

## 1、Add Fingerprint

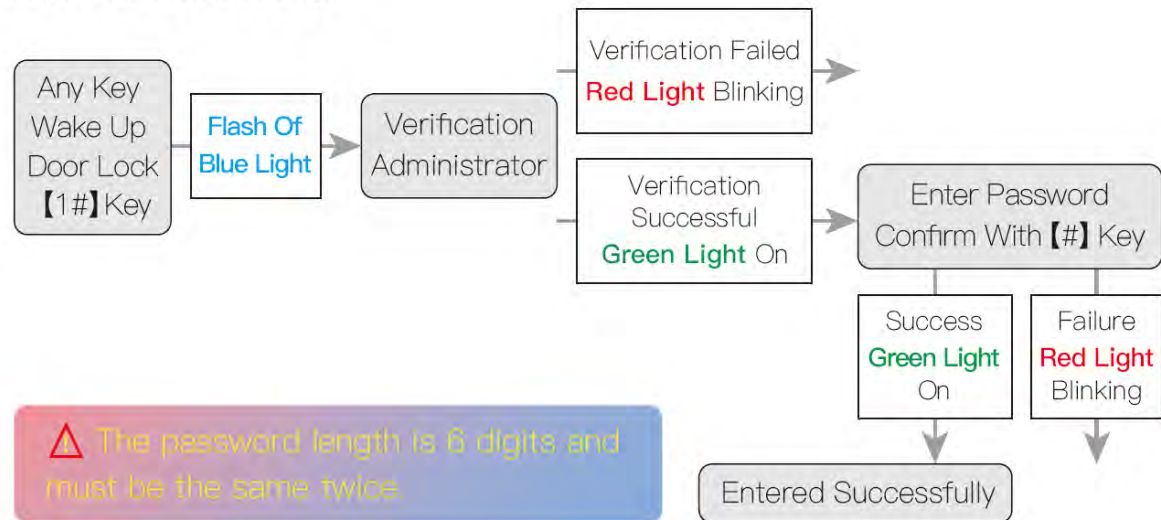


⚠ Complete entry of five fingerprint areas with 99.9% success rate!

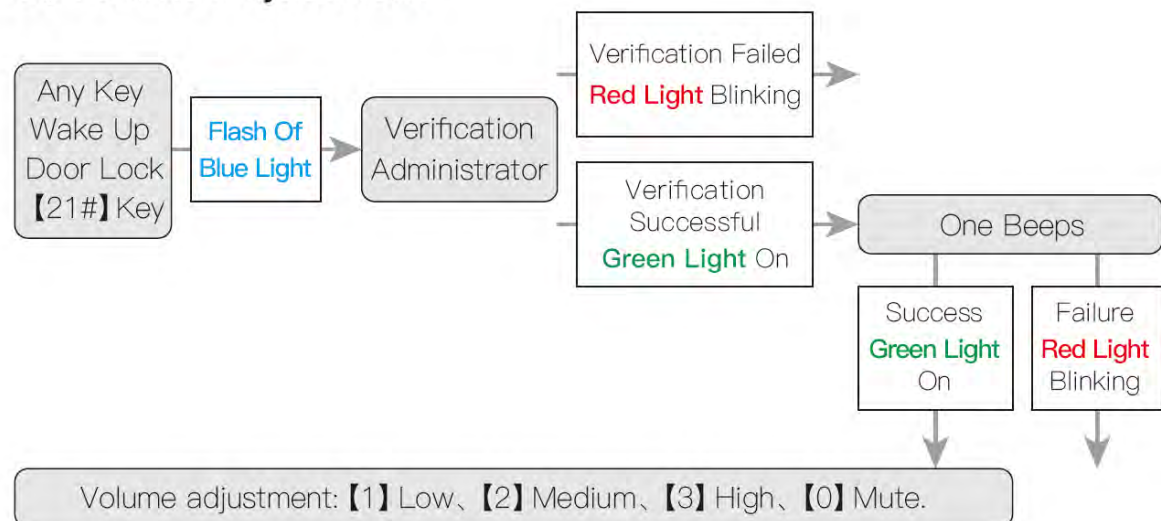
- The belly of the finger is used to make the entry, not the fingertip.
- The same fingerprint needs to be scanned from multiple angles.
- Multiple fingerprints can be scanned for the same user.
- Please keep your finger clean, not too dry or too wet.



## 2、Add Password



## 3、Volume Adjustment

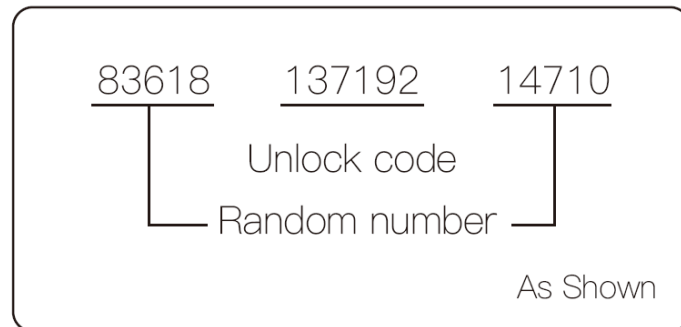




## 4、Virtual Password

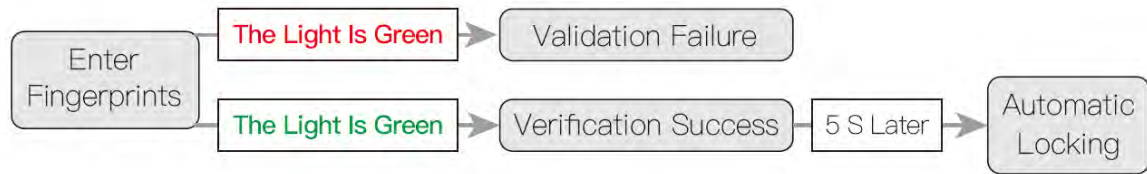
Anti-snooping password:

Users can enter random numbers before or after the unlock code to prevent the unlock code from being exposed, the total length of the code is 26 digits.

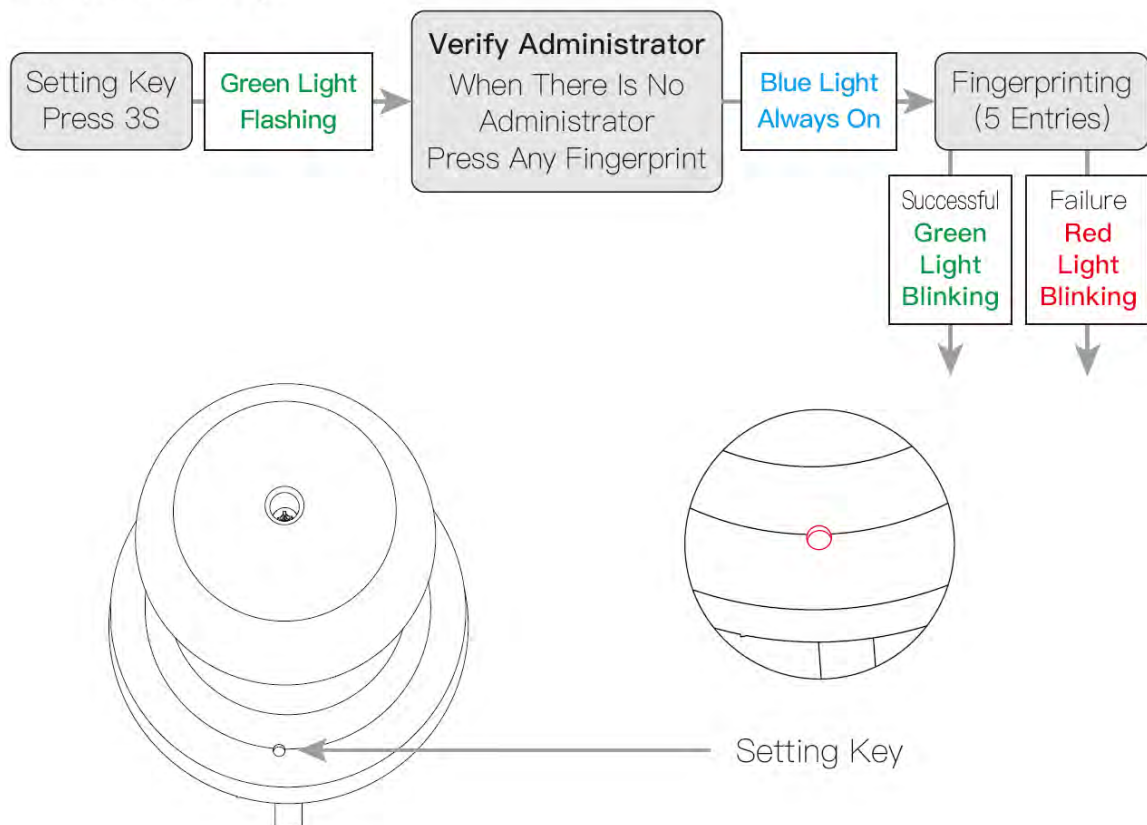


# DOOR LOCK USE GUIDE

## 1、Open/Close Lock



## 2、Quick Entry



## 3、Password Unlocking



## 4、Key Unlocking

To use the key, rotate 90 degrees and press the handle to unlock/lock the door.

## 5、Automatic Locking

After 5 seconds of unlocking, the device will automatically lock.

- ⚠ ● When the App is not connected or user information is entered, Any fingerprint, card or password 【123456#】 will unlock the device.
- If the lock beeps 3 times and the red light comes on, unlocking has failed, please try again.

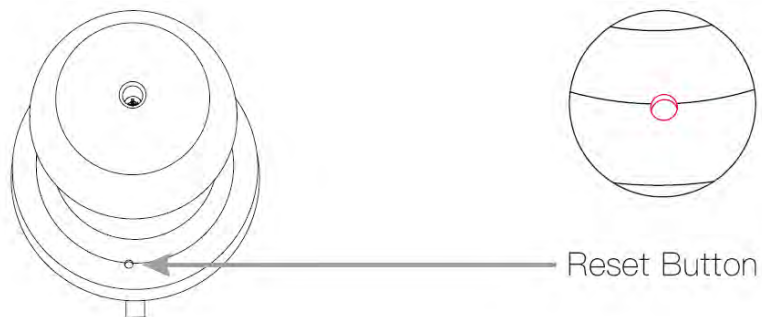
## 6、“Normally Open” Mode Setting (Default Auto-Lock)

Wake up the door lock: Input 【28#】 to verify the administrator successfully, Quickly turns “Normally Open” mode on and off.

- ⚠ ● Switch from “Normally Open” mode to “Auto Lock” mode and vice versa.
- Any valid user can unlock the door, and will switch to “Auto Lock” mode.
- Press the 【#】 key on the outer handle to switch to “Auto Lock” mode.

## 7、Forced Initialization

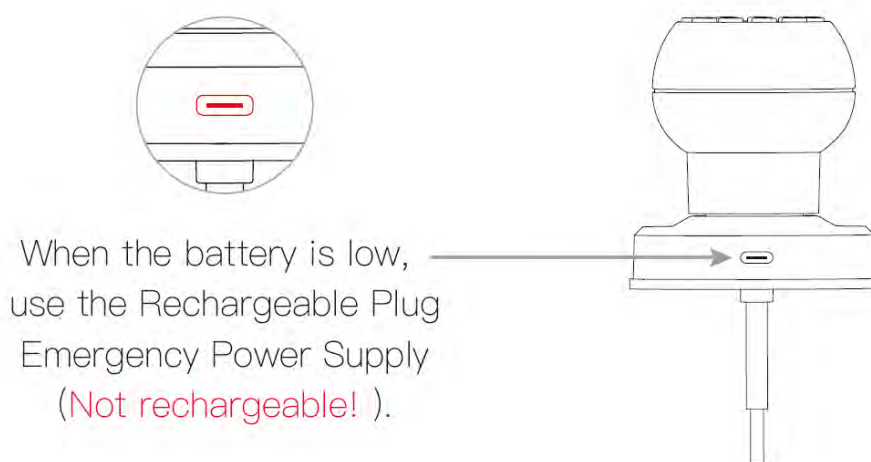
Method 1:



Method 2:

Wake up the door lock: Enter **【888#】** to verify the administrator to force the door lock to initialize.

## 8、Emergency Power Supply





# PRODUCT PARAMETERS

SN	Function	Content	Description
1	Unlocking Method	Fingerprint+Password +Key+Tuya App	
2	Total Number Of Users	200 Groups	Includes administrators and regular users
3	Fingerprint	100 Groups	Repeat the fingerprint entry 5 times (Please try to enter from multiple angles)
4	Password	100 Groups	Enter your password twice, and press <b>【#】</b> confirm. (6~10 digits, both times must be the same!)
5	Dummy Password	26th	
6	Low Voltage Alarm	$4.8\pm0.2V$	When the voltage is lower than 4.8V, the red light blinks 5 times, prompting “the battery is low, please replace the battery”, and there are still 100 times left to unlock the door, when it is lower than 4.5V, the door lock will not be able to unlock.
7	Quiescent Current	$\leq 80\mu A$	
8	Dynamic Current	$\leq 150mA$	
9	Supply Voltage	$6.0\pm0.3V$	Voltage of new battery when fully charged
10	Emergency Power Supply	5V (DC)	USB Type-C power supply port
11	Operating Temperature	$-25^{\circ}C\sim65^{\circ}C$	
12	Operating Humidity	20%~90%RH	

**FCC Statement**

This equipment has been tested and found to comply with the limits for a Class B digital device, pursuant to Part 15 of the FCC Rules. These limits are designed to provide reasonable protection against harmful interference in a residential installation. This equipment generates uses and can radiate radio frequency energy and, if not installed and used in accordance with the instructions, may cause harmful interference to radio communications. However, there is no guarantee that interference will not occur in a particular installation. If this equipment does cause harmful interference to radio or television reception, which can be determined by turning the equipment off and on, the user is encouraged to try to correct the interference by one or more of the following measures:

- Reorient or relocate the receiving antenna.
- Increase the separation between the equipment and receiver.
- Connect the equipment into an outlet on a circuit different from that to which the receiver is connected.
- Consult the dealer or an experienced radio/TV technician for help.

This device complies with part 15 of the FCC Rules. Operation is subject to the following two conditions: (1) This device may not cause harmful interference, and (2) this device must accept any interference received, including interference that may cause undesired operation.

Changes or modifications not expressly approved by the party responsible for compliance could void the user's authority to operate the equipment.

The device has been evaluated to meet general RF exposure requirement. The device can be used in portable exposure condition without restriction.



Model No: **Smart lock Q1-TY/Q1-TT**

Version : 1.1

Date : 2024.10.16

Origin : Zhongshan • China

Issued in October 2024

Printing in China © All Rights Reserved

