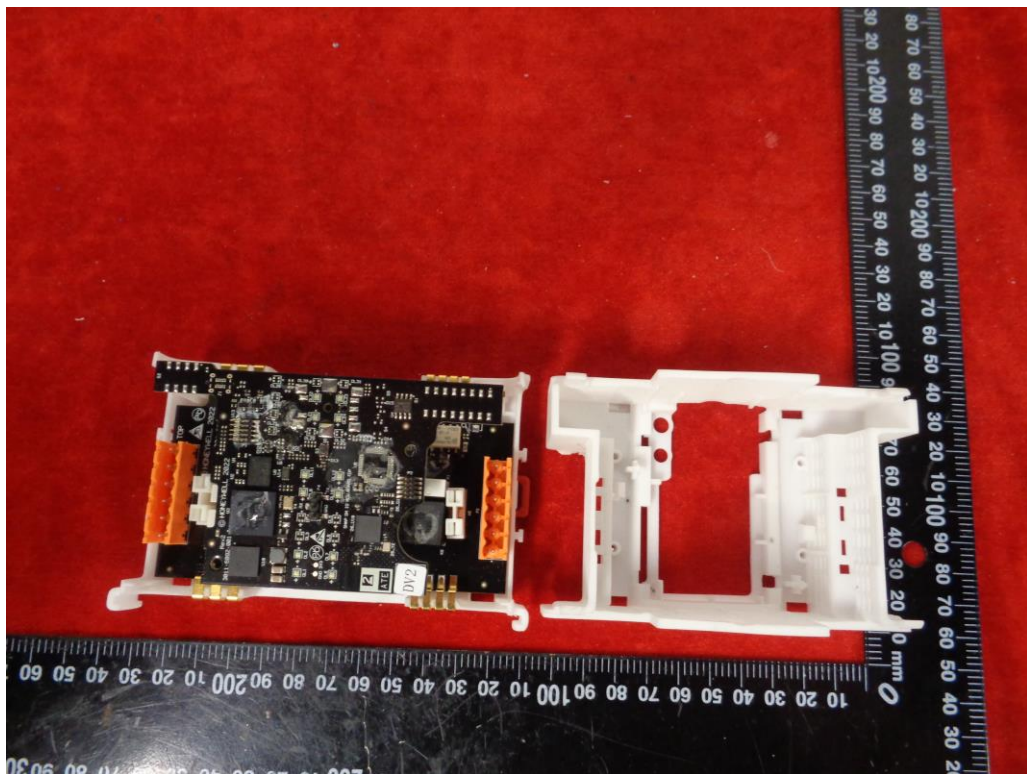
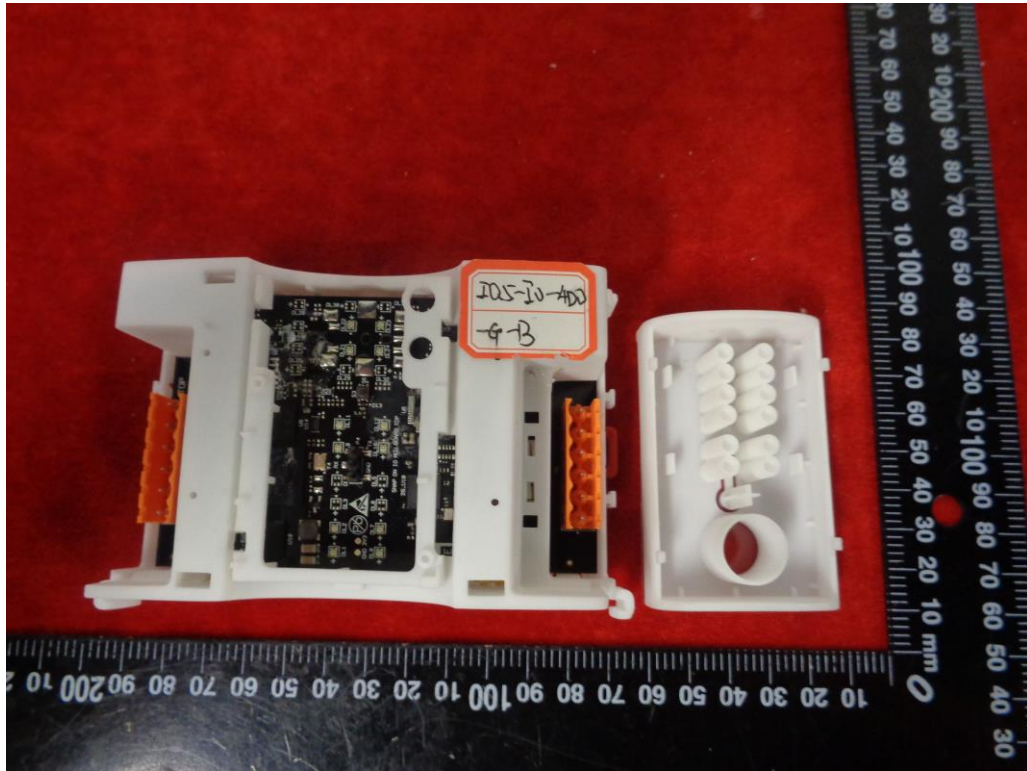
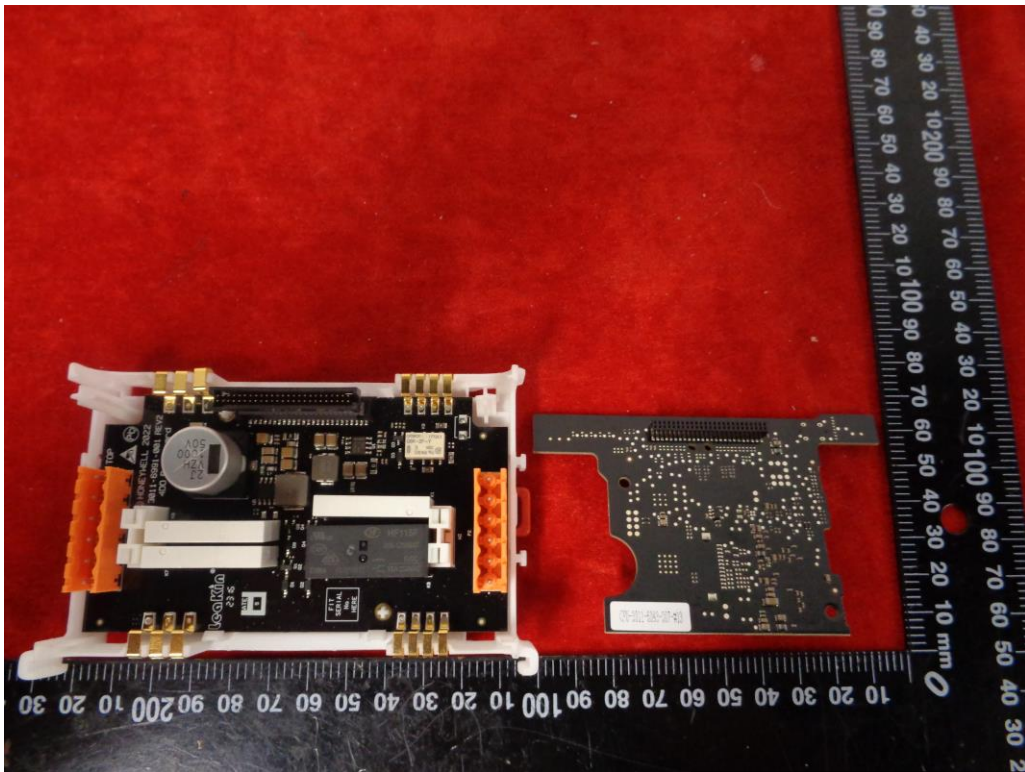
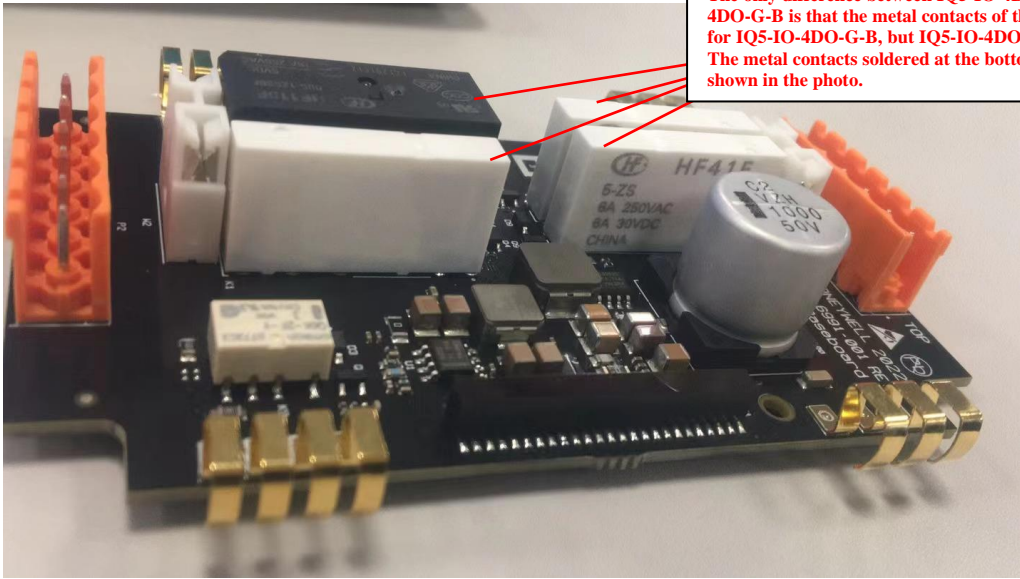


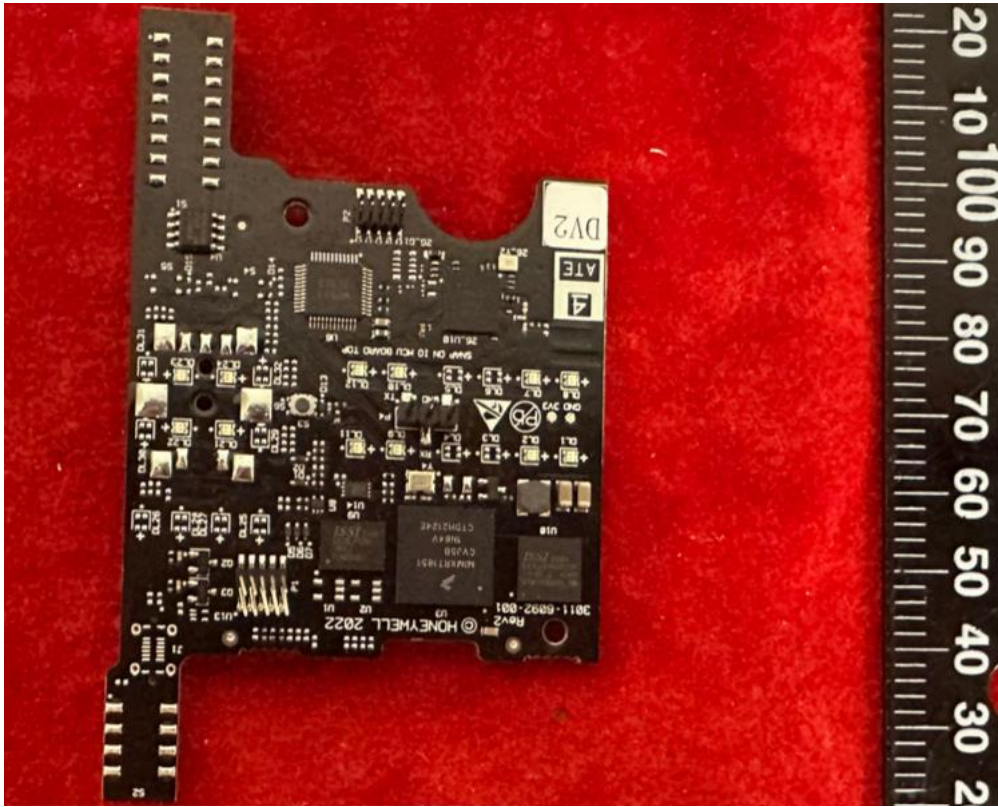
IQ5-IO-4DO-G-B & IQ5-IO-4DO-B:

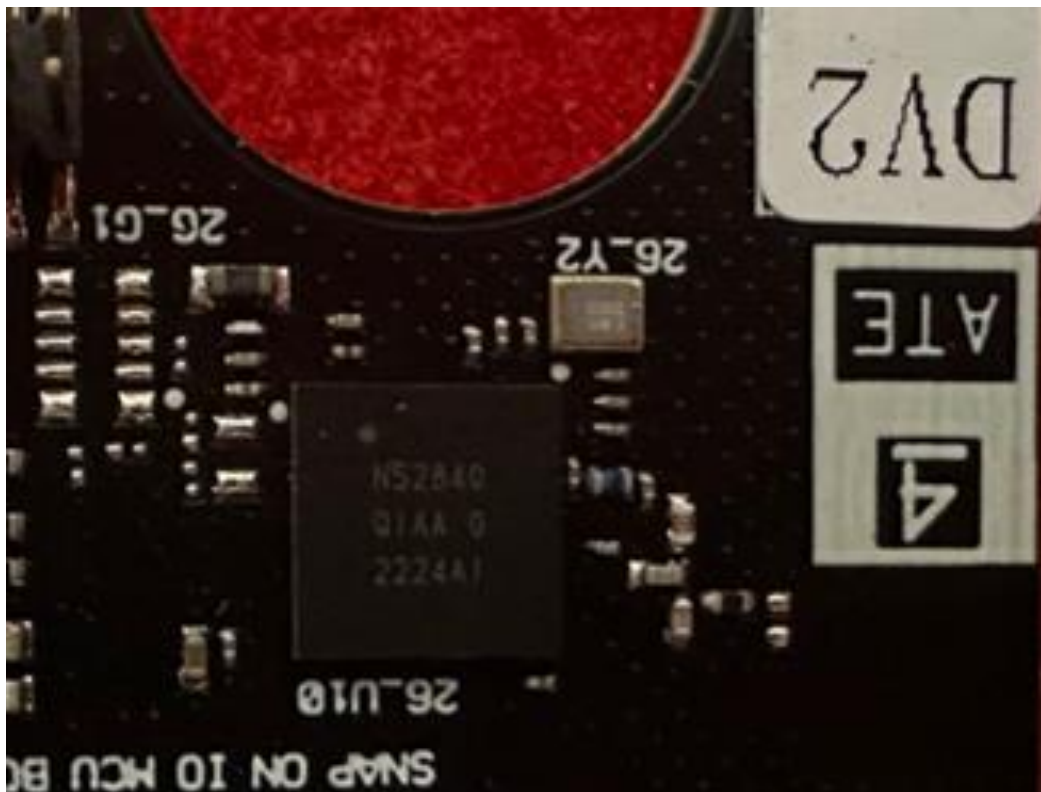




The only difference between IQ5-IO-4DO-B and IQ5-IO-4DO-G-B is that the metal contacts of the relay are gold plated for IQ5-IO-4DO-G-B, but IQ5-IO-4DO-B is not. The metal contacts soldered at the bottom, so cannot be shown in the photo.







RF chip