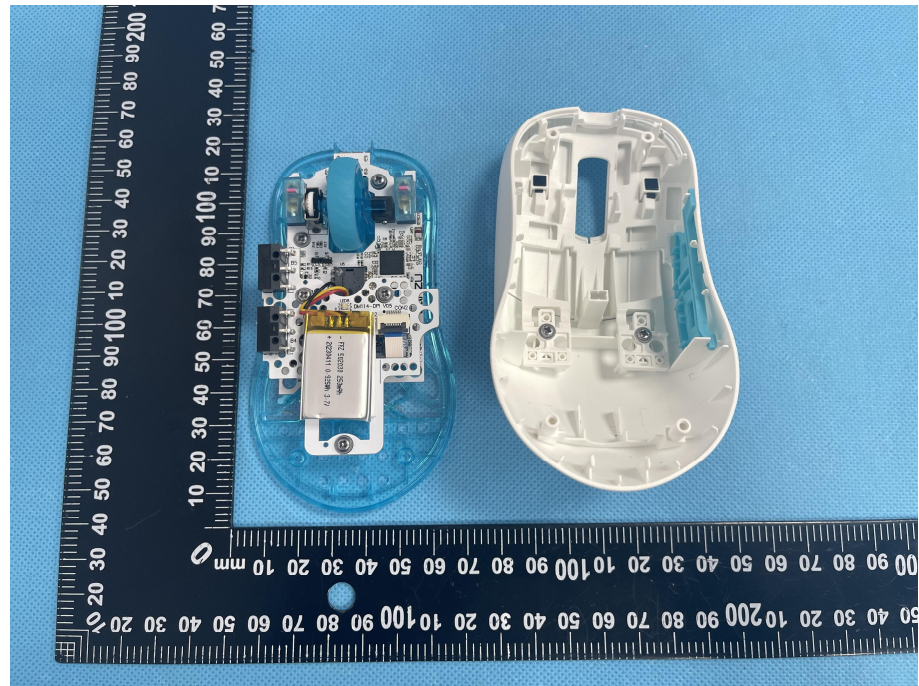
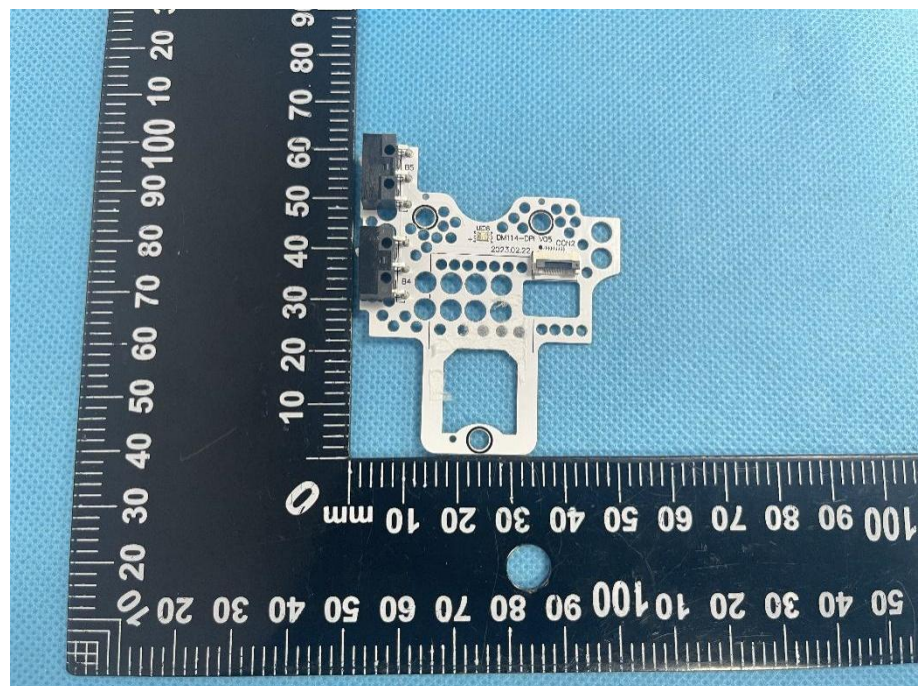


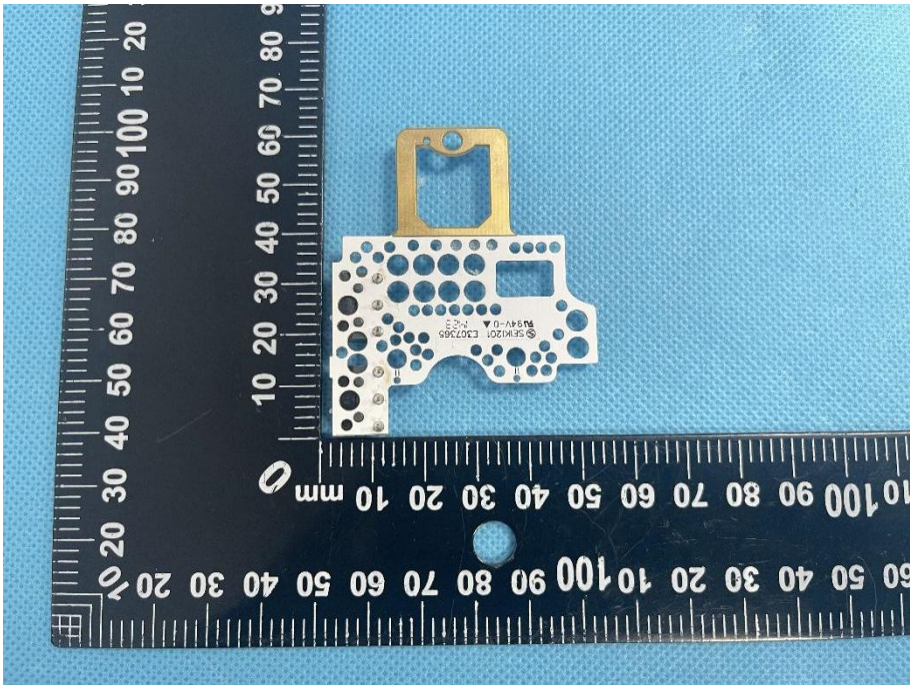
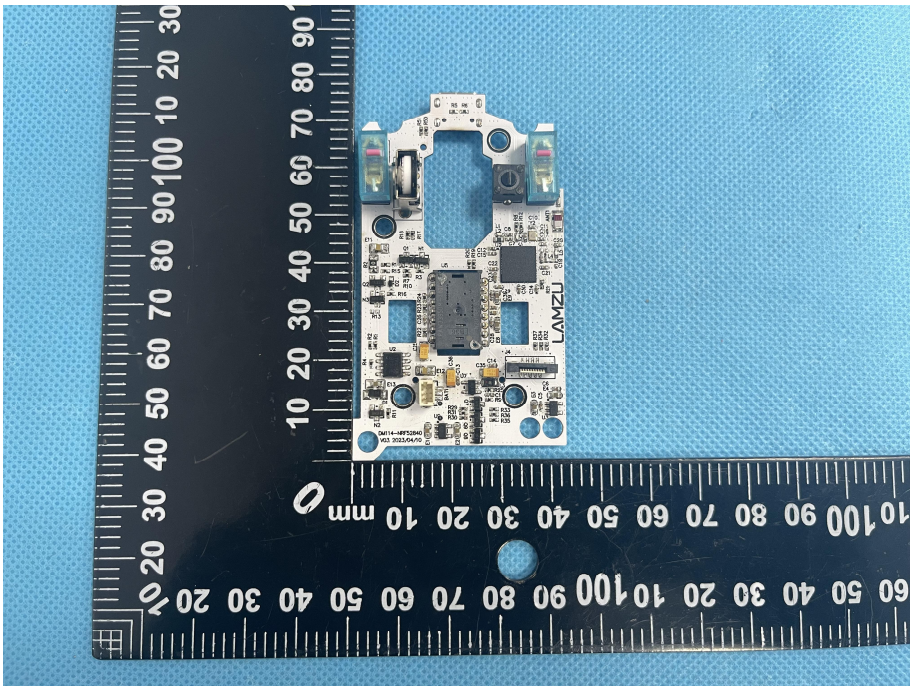
EXHIBIT 3 - EUT INTERNAL PHOTOGRAPHS

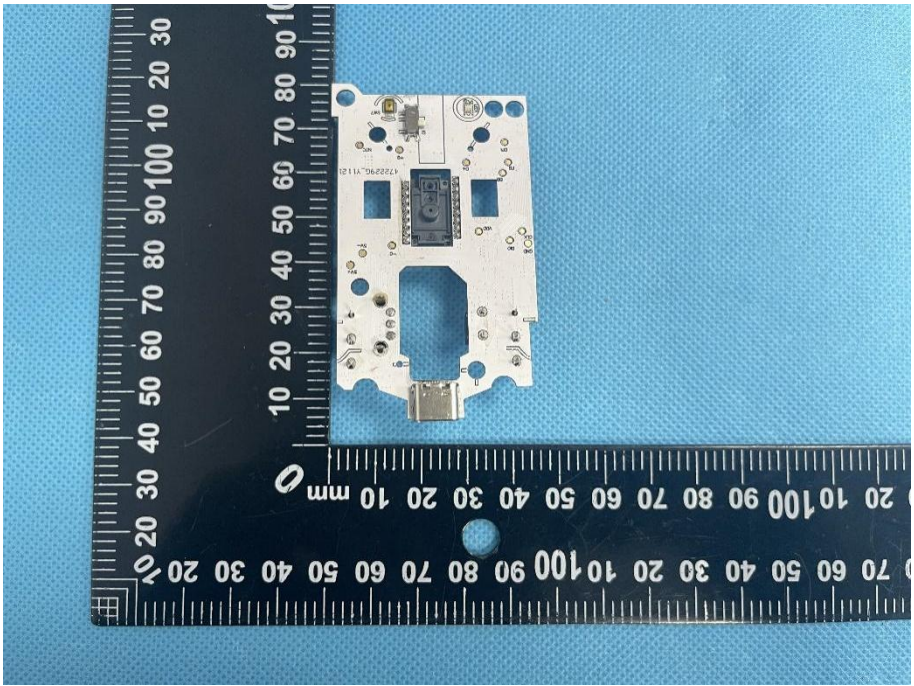
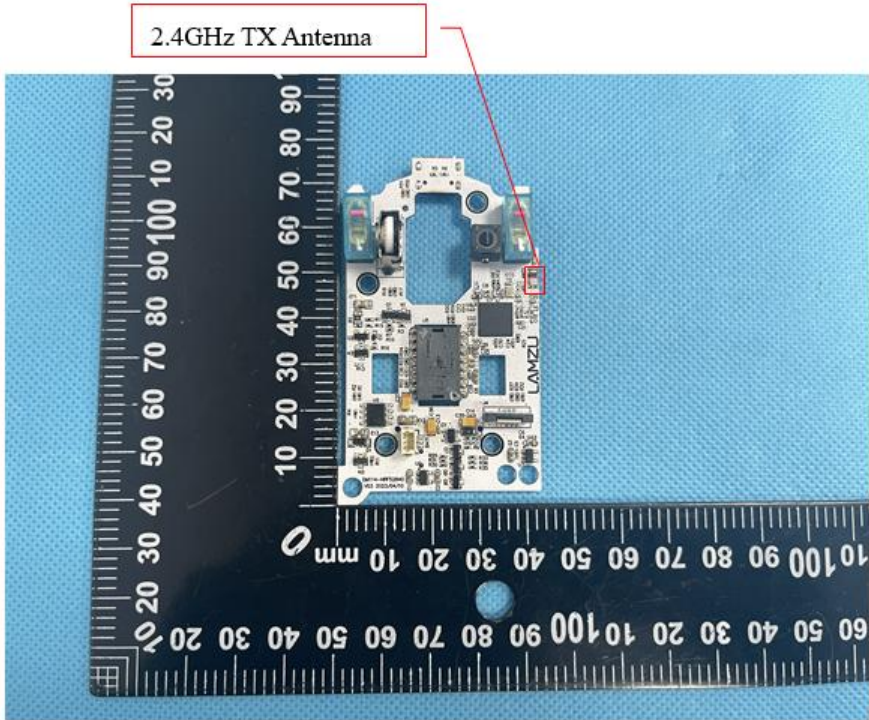
**EUT Housing and
Board View 1**



**Solder
Board-Component
View 1**



<p>Solder Board-Component View 2</p>	
<p>Solder Board-Component View 3</p>	

<p>Solder Board-Component View 4</p>	 <p>A photograph of a small white PCB component with a USB connector at the bottom. The component is placed on a blue textured surface next to a black ruler with white markings. The ruler shows measurements in millimeters, with the component's length being approximately 100mm. The component has various electronic components and a central rectangular cutout.</p>
<p>Antenna View</p>	 <p>A photograph of the same PCB component from a different angle, showing the antenna area. A red box highlights a small component on the board, with a red line pointing to a label above it that reads "2.4GHz TX Antenna". The ruler and blue background are also visible.</p>