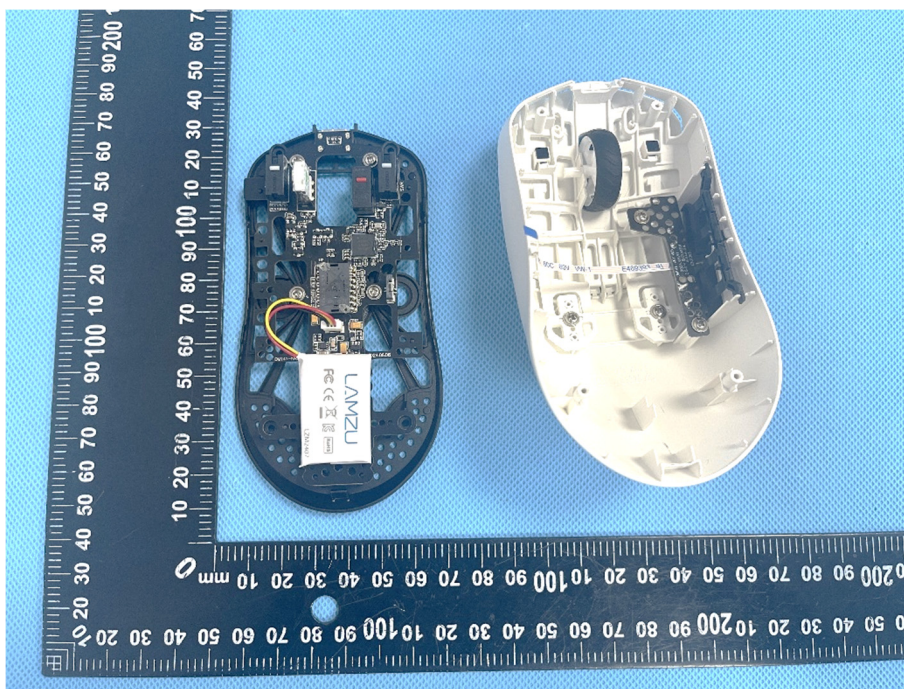
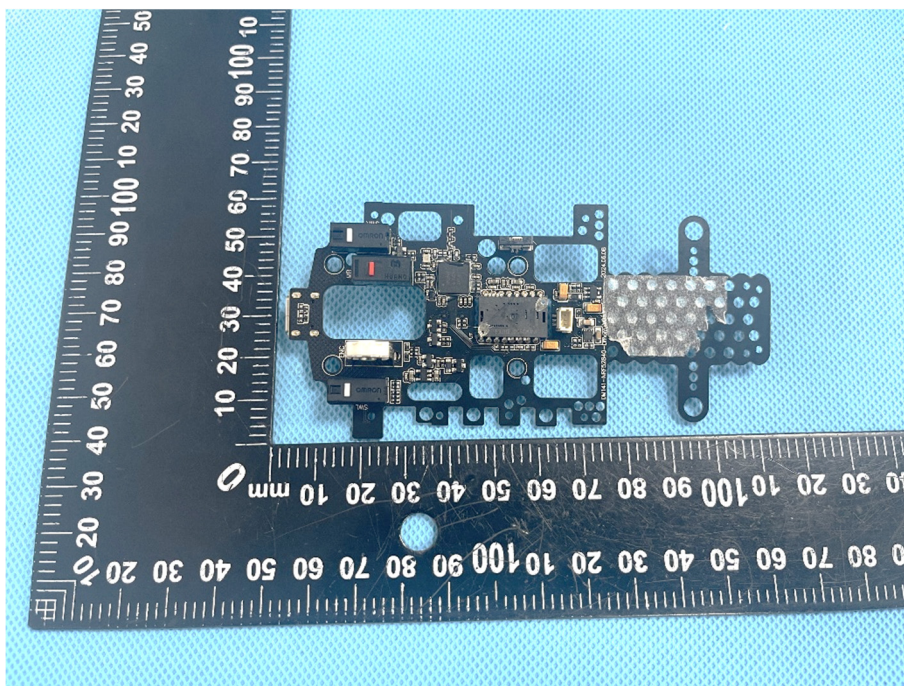


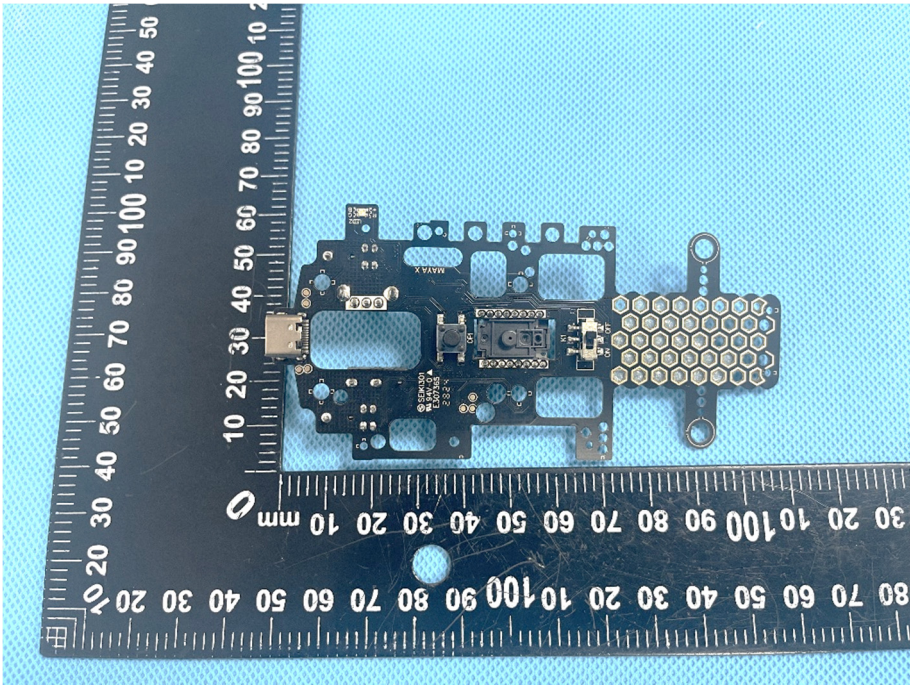
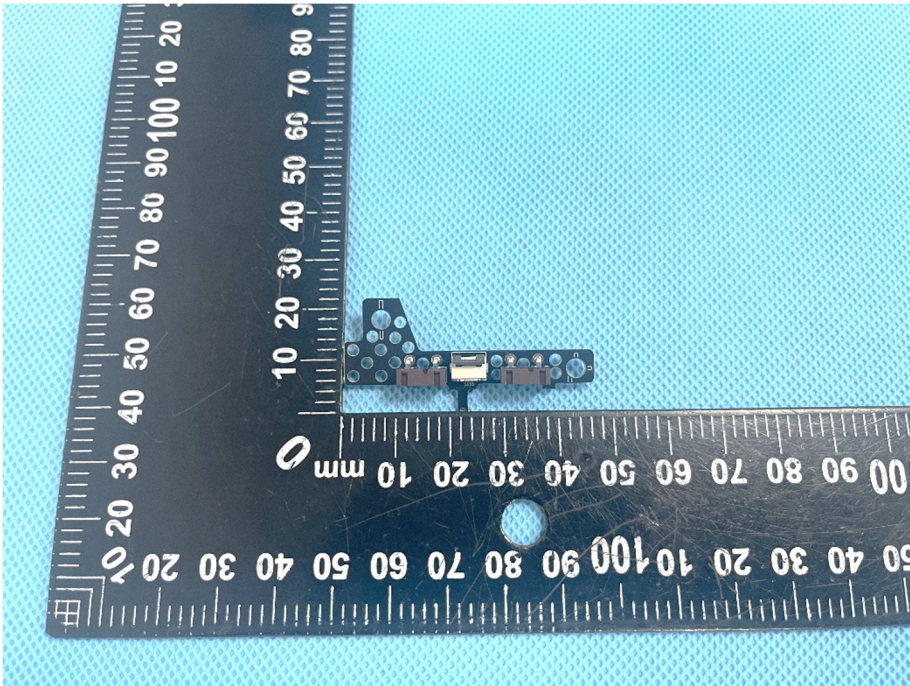
EXHIBIT 3 - EUT INTERNAL PHOTOGRAPHS

EUT Housing and Board View 1

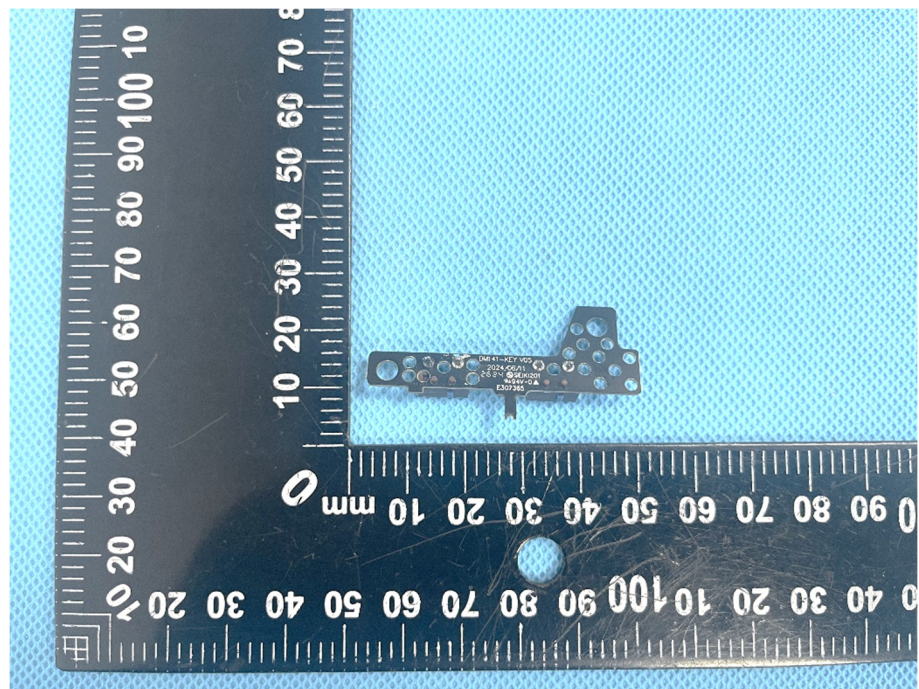


Solder Board-Component View 1

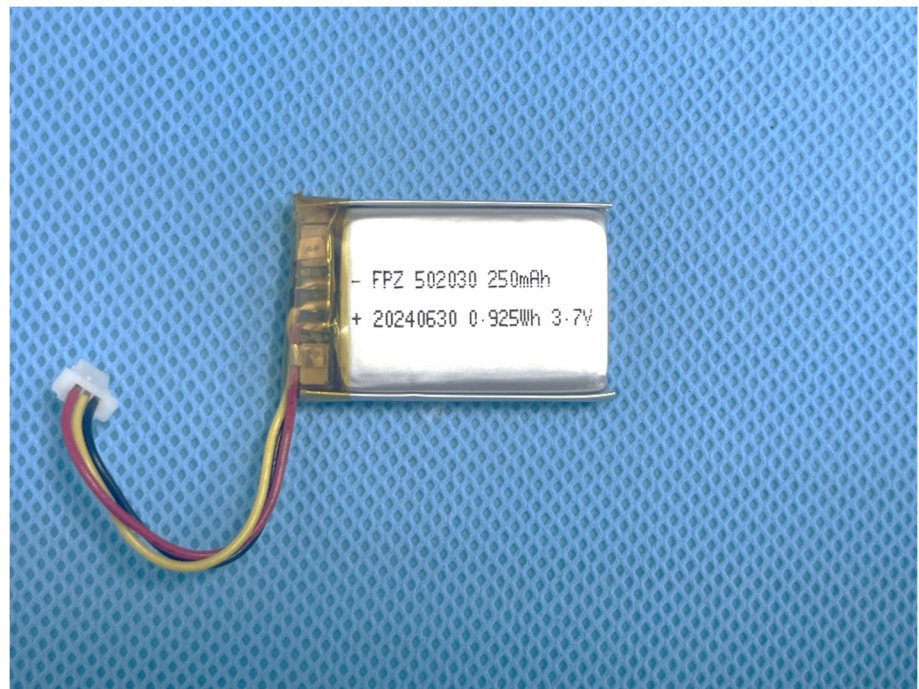


<p>Solder Board-Component View 2</p>	 A photograph of a solder board component, labeled 'View 2'. The component is a small, dark-colored PCB with various components and a grid of solder pads. It is placed on a blue textured surface next to a black L-shaped ruler for scale. The ruler has markings in millimeters, with the horizontal part showing 0 to 100 mm and the vertical part showing 0 to 100 mm. The component is roughly rectangular with a grid of circular pads on the right side and various components on the left.
<p>Solder Board-Component View 3</p>	 A photograph of the same solder board component, labeled 'View 3'. This view shows a different side of the component. It is placed on the same blue textured surface next to the same black L-shaped ruler. The component is smaller in this view, showing a different set of components and pads. The ruler markings are visible, showing 0 to 100 mm on both axes.

**Solder
Board-Component
View 4**



**Solder
Board-Component
View 5**



Antenna View

