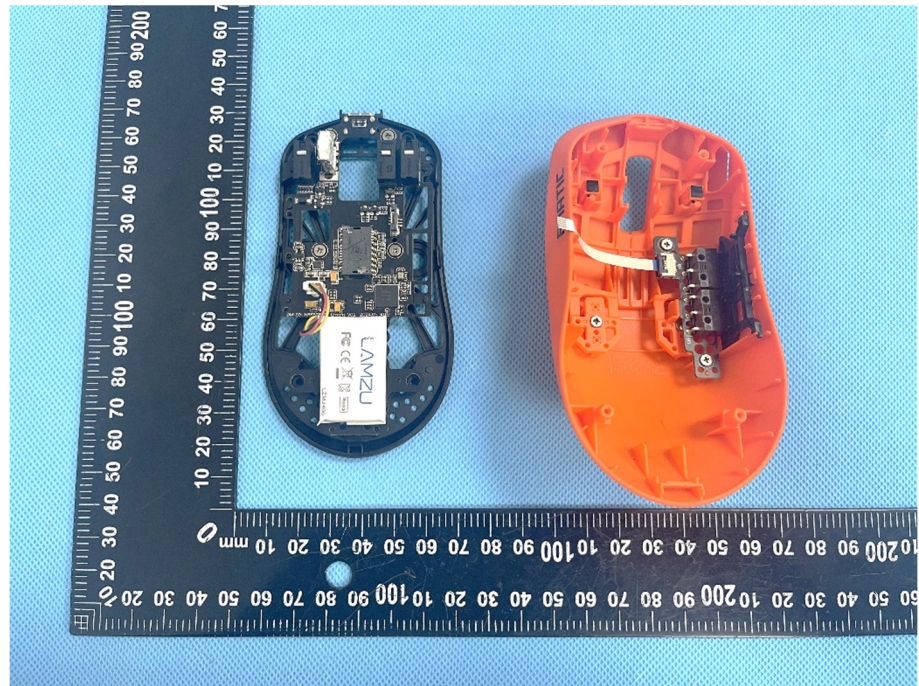
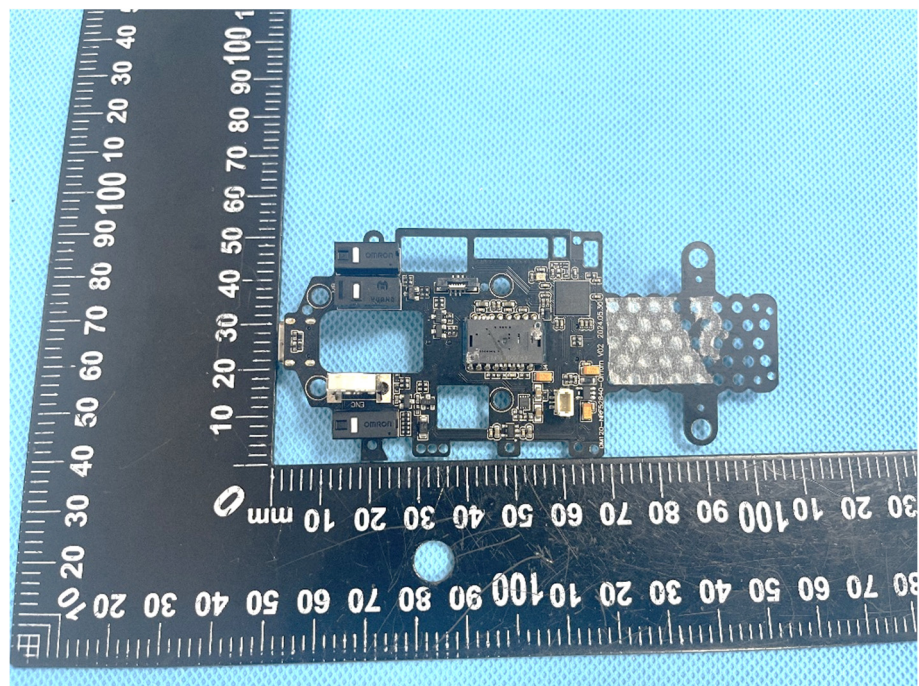


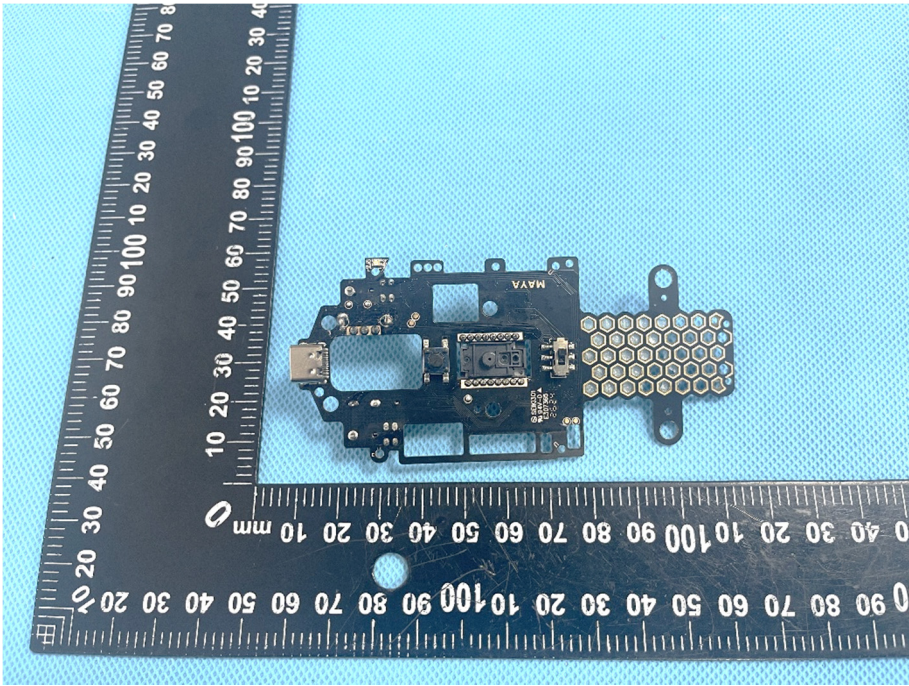
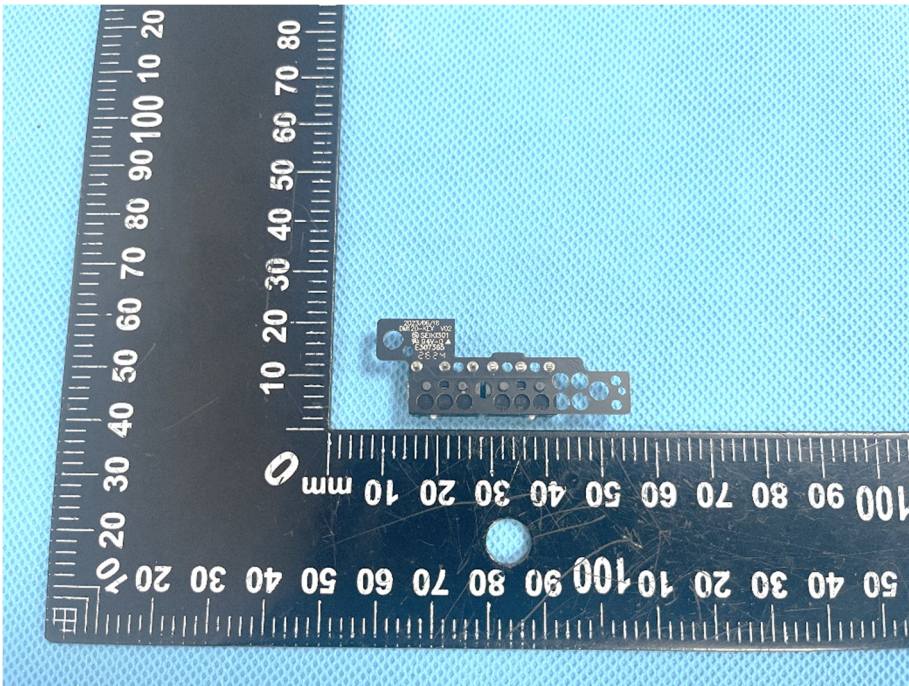
### EXHIBIT 3 - EUT INTERNAL PHOTOGRAPHS

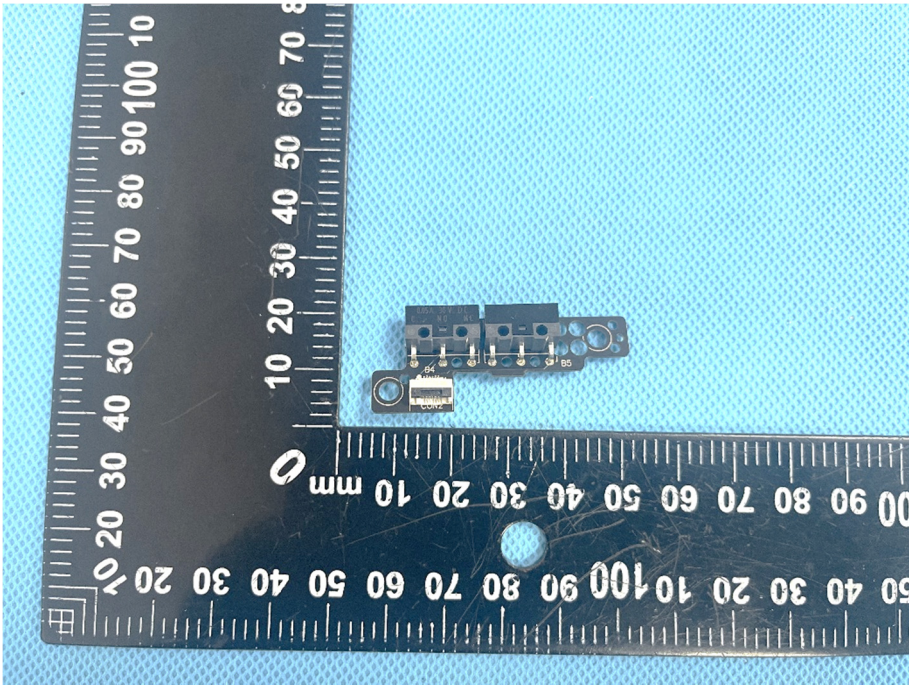
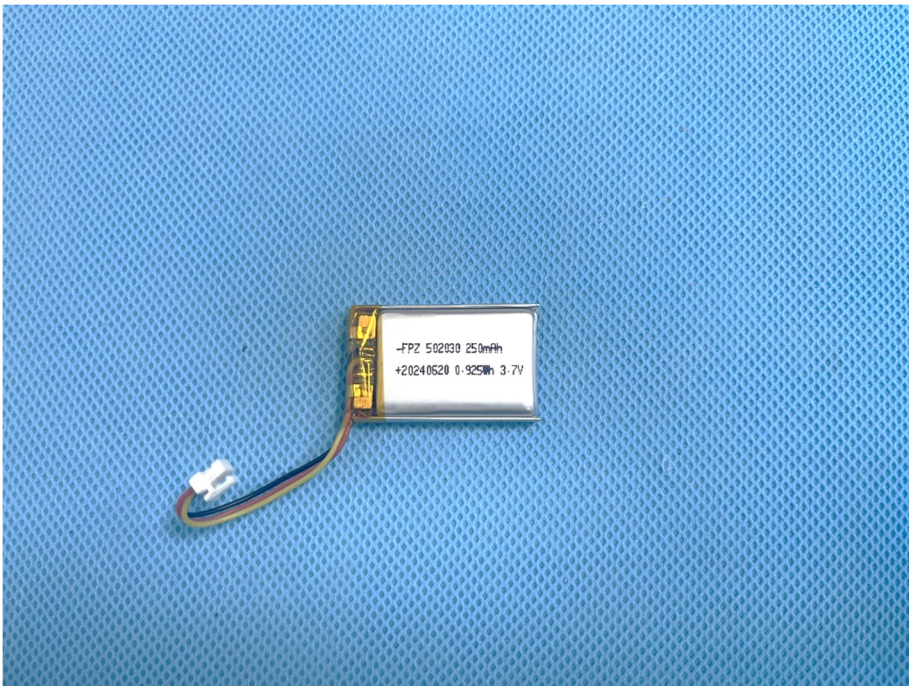
**EUT Housing and Board View 1**



**Solder Board-Component View 1**



<p><b>Solder Board-Component View 2</b></p>	 A photograph of a solder board component, labeled 'View 2'. The component is a small, dark-colored PCB with various components and a large array of solder joints on the right side. It is placed on a blue textured surface next to a black L-shaped ruler for scale. The ruler shows measurements in millimeters, with the horizontal part ranging from 0 to 100 mm and the vertical part from 0 to 80 mm. The component is approximately 60 mm wide and 40 mm high.
<p><b>Solder Board-Component View 3</b></p>	 A photograph of the same solder board component, labeled 'View 3'. This view shows the component from a different angle, highlighting the array of solder joints and the component's profile. It is placed on the same blue textured surface next to the same black L-shaped ruler for scale. The component is approximately 60 mm wide and 40 mm high.

<p><b>Solder Board-Component View 4</b></p>	 A photograph of a small, rectangular solder board component. The component is dark blue or black with several gold-colored pins and a circular feature. It is placed on a blue textured surface next to a black ruler with white markings. The ruler shows measurements in millimeters, with the component positioned between the 10mm and 30mm marks.
<p><b>Solder Board-Component View 5</b></p>	 A photograph of a solder board component, similar to the one in View 4, but with a white battery and a connector. The battery is rectangular and has the following text printed on it: "-FPZ 502030 250mAh" and "+20240620 0.925Wh 3.7V". The component is placed on a blue textured surface.

